



Quick Start

Thank you for purchasing the Mobile WiFi. This Mobile WiFi brings you a high speed wireless network connection.

This document will help you understand your Mobile WiFi so you can start using it right away. Please read this document carefully before using your Mobile WiFi.

For detailed information about the functions and configurations of the Mobile WiFi, refer to the online help on the web management page that comes with the Mobile WiFi.

For detailed instructions for logging in to the web management page, refer to "Logging In to the Web Management Page" on page 16.

Getting to Know Your Mobile WiFi

Note:

The Mobile WiFi function descriptions and illustrations in this document are for your reference only. The product you have purchased may vary.

Application Scenarios

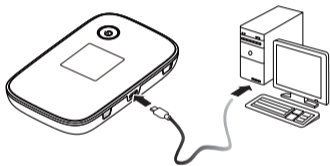
Wi-Fi devices (such as smartphones, tablet computers, and game consoles) or computers can all access the Internet through Mobile WiFi. The specific connection procedure depends on the operating system of the Wi-Fi device or computer. Establish a connection according to your device's specific instructions.

To access the Internet through a USB port connection, install the driver according to the instructions.

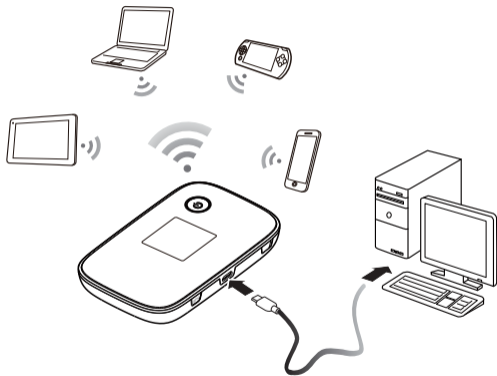
Scenario 1: Connecting multiple devices through Wi-Fi



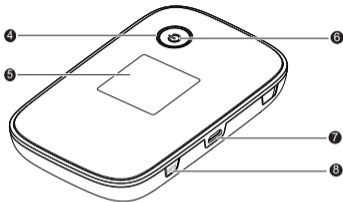
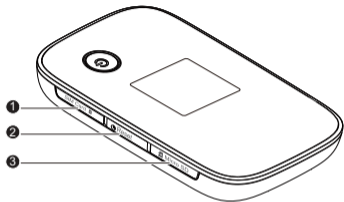
Scenario 2: Connecting a single device through USB



Scenario 3: Connecting multiple devices through Wi-Fi and USB simultaneously



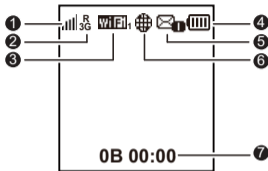
Appearance



- 1** SIM card slot
- 2** Reset button
- 3** microSD card slot
- 4** Power button

- 5** Screen
- 6** Power indicator
- 7** Micro USB port
- 8** WPS button

Screen



1 Signal strength

▬ ▬ ▬ ▬ ▬: Signal strength from weak to strong.

2 Network type

- 2G/3G/4G: Connected to a 2G/3G/LTE network.
- R: Data roaming turned on.

3 Wi-Fi

- Wi-Fi turned on.

- Number of connected Wi-Fi devices.

④ **Battery**

: Battery level from low to high.

⑤ **SMS**

- New messages.
- Number of new messages.

⑥ **Network connection status**

Internet connection is set up.

⑦ **Traffic statistics**

- Data traffic information.
- Connection time.

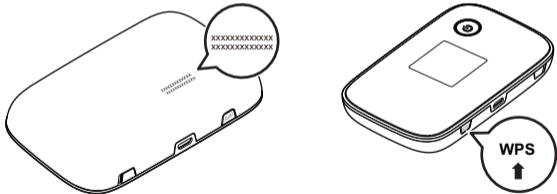
Note:

Data traffic information is for your reference only. For more accurate data traffic information, please consult your service provider.

SSID and Wireless Network Encryption Key

When a Wi-Fi device establishes a connection to the Mobile WiFi for the first time, you may need to enter the default Service Set Identifier (SSID) and wireless network encryption key. These are printed on the Mobile WiFi. It is recommended that you can log in to the web management page and change your SSID and wireless network encryption key.

In addition, press the WPS button twice to view the current SSID and wireless network encryption key on the screen.



Getting Started

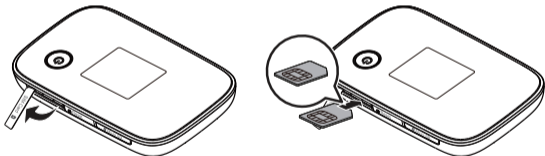
Installing a SIM Card

Caution:

Use a standard SIM card compatible with the Mobile WiFi, otherwise you will damage your Mobile WiFi.



Install the SIM card according to the illustration.



Note:

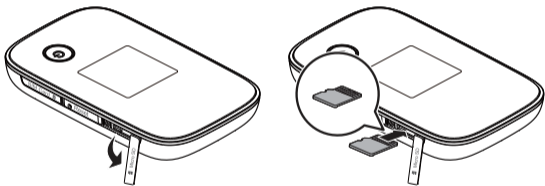
- When removing the SIM card, open the tab and gently press the SIM card in, then

release. The card will automatically pop out.

- Do not remove the SIM card when it is in use. Doing so will affect the performance of your Mobile WiFi and data stored on the SIM card may be lost.

Installing the microSD Card

Install the microSD card according to the illustration.



Note:

- The microSD card is an optional accessory. If no microSD card is included in the package, please purchase one separately.

- When removing the microSD card, open the tab and gently press the microSD card in, then release. The card will automatically pop out.
- Do not remove the microSD card when it is in use. Doing so will affect the performance of your Mobile WiFi and data stored on the microSD card may be lost.

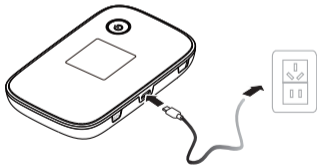
Charging the Battery

If the battery has not been used for an extended period of time, recharge it before use.

Method 1: Use the power adapter to charge the device

Note:

- Only use chargers compatible with the Mobile WiFi and provided by a designated manufacturer. Use of an incompatible charger or one from an unknown manufacturer may cause the Mobile WiFi to malfunction, fail, or could even cause a fire. Such use voids all warranties, whether expressed or implied,

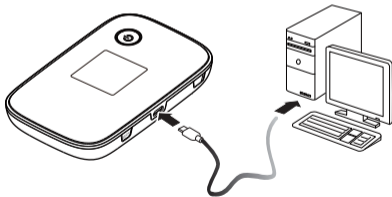


on the product.

- The power adapter is an optional accessory. If it is not included in the package, you may contact an authorized dealer to buy an adapter compatible with the Mobile WiFi.
- The Mobile WiFi's power adapter model is HW-050200X3W. X represents U, E, B, A, or J, depending on your region. For details about the specific adapter model, contact an authorized dealer.

Method 2: Charge the device through a computer connection

Use the data cable provided with your device to connect the Mobile WiFi to the computer.





Connecting to the Internet via Wi-Fi

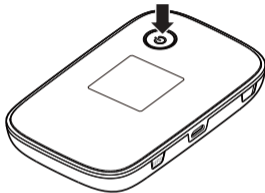
The Mobile WiFi's management parameters have been preset according to your operator's requirements. You can quickly connect to the Internet by following these steps:

Step 1: Turn on the Mobile WiFi

Press and hold the  button until the screen lights up, indicating that the Mobile WiFi is turned on.

Note:

- Press and hold the  button to turn off the Mobile WiFi.
- If your Mobile WiFi malfunctions or cannot be properly powered off, press and hold the  button for at least 10 seconds to forcibly power off your Mobile WiFi.



Step 2: Establish a Wi-Fi connection (using a computer running the Windows XP operating system as an example)

1. Ensure that the Mobile WiFi's Wi-Fi function is on.
2. Select **Start > Control Panel > Network Connections > Wireless Network Connection**.

Note:

Before establishing a Wi-Fi connection, ensure that the computer is equipped with a wireless network adapter. If the computer indicates a wireless network connection, the wireless network adapter can be used. Otherwise, verify that your wireless network adapter is working properly.

3. Click **View available wireless networks** to view a list of available wireless networks.
4. Select the wireless network connection with the Mobile WiFi's SSID and click **Connect**.

Note:

- If the wireless network connection is encrypted, enter the correct wireless network encryption key.
- Press the WPS button twice to view the current SSID and wireless network encryption key on the screen.

5. Wait a moment for the wireless network connection icon to appear in the system tray in the lower right corner of the computer screen. The wireless network connection is then established.

Step 3: Connect to the Internet

If data is transmitted, the Mobile WiFi will automatically connect to the Internet. If data is not transmitted for a period of time, the Mobile WiFi will automatically disconnect from the network connection.

Note:

You can log in to the web management page and enable or disable the automatic dialing while roaming function. If this function is turned off, when the Mobile WiFi enters a roaming network, it will automatically disconnect from the Internet connection that has already been established. You will need to manually establish this network connection again.

Logging In to the Web Management Page

1. Make sure the connection between the Mobile WiFi and the Wi-Fi device or computer is working normally.
2. Open the browser, and enter **http://192.168.1.1** in the address box.
3. Enter the user name and password to log in to the web management page.

Note:

- The default user name is **admin**.
- The default password is **admin**.

Daily Use

Battery Saving Mode

If the Mobile WiFi has been inactive for some time, the Mobile WiFi enters the standby mode, in which the power indicator blinks slowly and the display screen turns off. Pressing any button causes the display screen to light up.

When the Mobile WiFi is being powered only by the battery, you can choose to enable or disable the automatic Wi-Fi turnoff function. If this function is enabled and if no Wi-Fi devices access the Mobile WiFi for a period of time, the Wi-Fi turns off automatically. You can press any button to turn the Wi-Fi on again.

Verifying the PIN

If the PIN verification function is enabled, log in to the web management page and enter the correct PIN according to the instructions. PIN/PUK codes are supplied by your operator along with the SIM card. For details, please consult your operator.

Establishing a WPS Connection

If the Wi-Fi device to be connected to the Mobile WiFi supports WPS, the wireless network encryption key is generated automatically and there is no need to enter it manually. The steps for WPS connection are as follows:

1. Turn on the Mobile WiFi.
2. Turn on the Wi-Fi device to be connected to the Mobile WiFi.
3. Activate the Mobile WiFi's WPS.

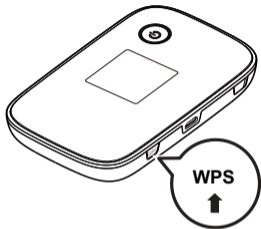
Note:

Press and hold the WPS button to activate Mobile WiFi's WPS.

4. Activate the Wi-Fi device's WPS.

Note:

For specific instructions for the Wi-Fi device, refer to the device's user manual.



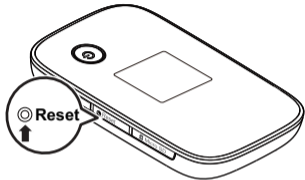
Restoring to Factory Settings

If you forget some configuration parameters, you can restore the Mobile WiFi to its factory settings and then configure the Mobile WiFi again.

Press and hold the **Reset** button until the display screen turns off. The Mobile WiFi is then restored to its factory settings.

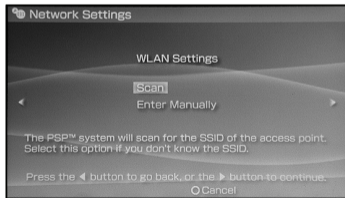
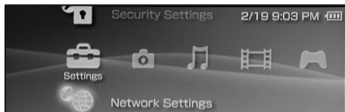
Note:

After you carry out this operation, the Mobile WiFi's personal configuration parameters will all be deleted. All configurations on the web management page will be restored to the factory settings.

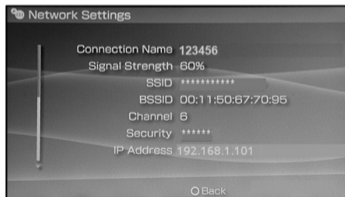
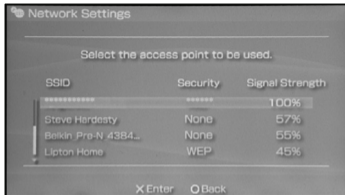


Example 1: Connecting to a Game Console (for example, PSP) through Wi-Fi

1. On the PSP, turn on the WLAN.
2. Choose **Settings** > **Network Settings**.
3. Select **Infrastructure Mode**.
4. Select **New Connection**, and enter the connection name.
5. Select **Scan** to search for wireless networks. A list of access points will be displayed on the screen.
6. Select the access point with the Mobile WiFi's SSID, and press the **▶** button on the PSP. Confirm the SSID, and enter the correct wireless network encryption key.
7. Press the **▶** button to proceed to the next step, and then press the **X** button to save settings.



8. Select **Test Connection** to test whether the network connection is successful.
9. You can now open the browser and access the network.

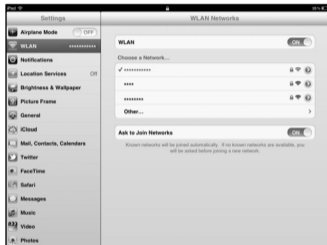


Example 2: Connecting to a Tablet Computer (for example, iPad) through Wi-Fi

1. Touch **Settings** > **WLAN** to turn on WLAN.
2. The tablet computer automatically searches for wireless connections and displays a list of access points.
3. Select the access point with the Mobile WiFi's SSID.
4. If required, enter the correct wireless network encryption key, and tap **Join**.
(The lock icon indicates that the encryption key is required to connect to this wireless network.)

Note:

Wi-Fi devices, such as an iPhone, iPod touch, PS3 and NDSi, can all access the Internet through the Mobile WiFi. For specific operations, refer to the Wi-Fi device's user manual.



Tips

When the Mobile WiFi is in use for an extended period of time, it will become warm and may overheat. Should this happen, the Mobile WiFi will automatically close the network connection and turn off to protect itself from damage. If this occurs, place the Mobile WiFi in a well ventilated space to allow the heat to dissipate, then turn it on and continue to use it as normal.

If you are unable to use the Mobile WiFi as normal, try the following:

- Consult the online help on the web management page.
- Restart the Mobile WiFi.
- Restore the Mobile WiFi to the factory settings.
- Consult your operator.



31010KYT_01