

Copyright © 2009 Huawei Technologies Co., Ltd.

All Rights Reserved.

No part of this document may be reproduced or transmitted in any form or by any means without prior written consent of Huawei Technologies Co., Ltd.

Trademarks and Permissions



HUAWEI and other Huawei trademarks are trademarks of Huawei Technologies Co., Ltd.

All other trademarks and trade names mentioned in this document are the property of their respective holders.

Notice

The information in this document is subject to change without notice. Every effort has been made in the preparation of this document to ensure accuracy of the contents, but all statements, information, and recommendations in this document do not constitute the warranty of any kind, express or implied.

Table of Contents

Getting to Know the HUAWEI EC1260	1
Requirements for the PC	4
Preparing the HUAWEI EC1260	4
Installation Guide	6
Safety Information.....	10

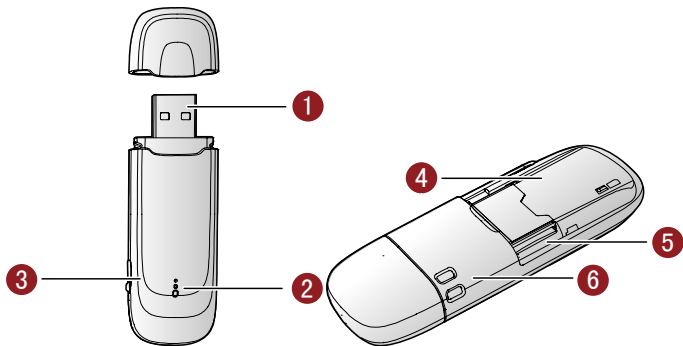
Thank you for purchasing HUAWEI EC1260 CDMA1X EVDO Rev.A USB Stick.

Note:

- This manual briefly describes the preparation, the process for installing/uninstalling, and safety precautions for using Huawei HUAWEI EC1260 CDMA1X EVDO Rev.A USB Stick (here in after referred to as the HUAWEI EC1260).
- You are recommended to read the manual before using the HUAWEI EC1260 .

Getting to Know the HUAWEI EC1260

The following figures show the appearance of the HUAWEI EC1260 . The actual product may differ.



1 USB Interface

It connects the HUAWEI EC1260 to a computer.

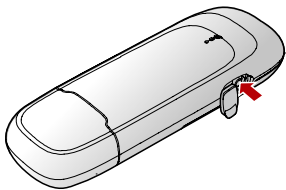
2 Indicator

Indicates the status of the HUAWEI EC1260 .

- On: The HUAWEI EC1260 is powered on.
- Blinking once every 2s: The HUAWEI EC1260 is searching the network or the network is not found.
- Blinking twice every 2s: The network is found.
- Blinking once every 0.2s: The HUAWEI EC1260 is engaged in a call or data service.

3 Earphone Interface

Connect the earphone.



4 USIM/SIM card slot

Holds the USIM/SIM card.

5 Micro SD card slot

Holds the Micro SD card.

6 Strap Hole

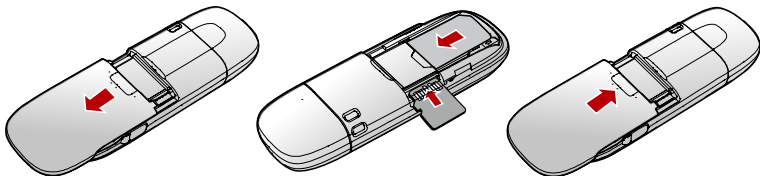
Requirements for the PC

To use the HUAWEI EC1260 , the PC must meet the following requirements:

- Standard USB interface.
- Windows 2000 SP4, Windows XP SP2, Windows Vista.
- Mac OS X 10.4 and 10.5 with latest upgrades
- The hardware of your PC must meet or exceed the recommended system requirements for the installed version of OS.
- Display resolution: 800 × 600 or above.

Preparing the HUAWEI EC1260

1. Take out of the back cover of the HUAWEI EC1260 .
2. Insert the USIM/SIM card and the micro SD card into the card slots. Make sure that the cards are properly inserted.



Note:

- Micro SD card is an optional accessory. If the micro SD card is not provided in the package, you can buy one yourself.
- Do not remove the USIM/SIM card and the micro SD card when they are being used. Removing the cards during an operation may damage the cards as well as the device, and data stored on the cards may be corrupted.

Installation Guide

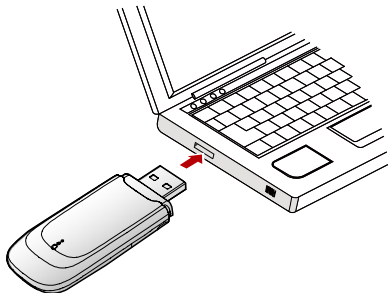
The procedure for installing the management program depends on the operating system installed on your PC. The following section takes Windows XP as an example.

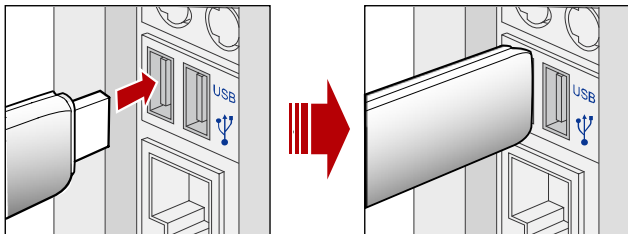
Connecting the HUAWEI EC1260 with a PC

Note:

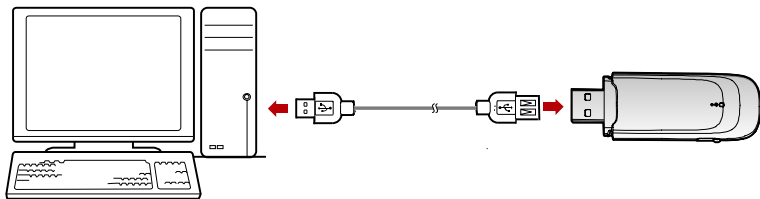
Power on your PC before connecting the HUAWEI EC1260 with the PC. Otherwise, the normal installation of the HUAWEI EC1260 may be affected.

One way: Plug the HUAWEI EC1260 into the USB interface of the PC.





The other way: connect the HUAWEI EC1260 to a PC using the USB extension cable.



Installing the HUAWEI EC1260 Management Program

- 1.** Connect the HUAWEI EC1260 with the PC.
- 2.** The OS automatically detects and recognizes new hardware and starts the

installation wizard.

Note:

If the auto-run program does not respond, find the `AutoRun.exe` file in the driver path. Then double-click **AutoRun.exe** to run the program.

3. Follow the prompts of the installation wizard.
4. After the program is installed, the shortcut icon of the management program is displayed on the desktop.

Starting the Management Program

After the HUAWEI EC1260 is installed, the management program is launched automatically. Then every time the HUAWEI EC1260 is connected to the PC, the management program is launched automatically.

You can also double-click the shortcut icon on the desktop to launch the management program.


Uninstalling the Management Program

1. Choose **Start > Control Panel**.
2. Find the management program, and click **Add/Remove** program to uninstall the management program.

Note:

It is recommended to restart the PC after the uninstallation to ensure that the management program is completely uninstalled.

Removing the HUAWEI EC1260

1. Double-click  in the system tray. The **Unplug or Eject Hardware** interface is displayed.

2. Select the hardware related to the HUAWEI EC1260 and click **Stop**.
3. When the prompt "It is safe to remove the device" is displayed, remove the HUAWEI EC1260 .

Note:

Before removing the HUAWEI EC1260 , exit the management program.

Safety Information

Read the safety information carefully to ensure the correct and safe use of your wireless device.

Interference

Do not use your wireless device if using the device is prohibited or when it causes danger or it interferes with electric devices.

Medical Device

- Do not use your wireless device and follow the rules and regulations set forth by the hospitals and health care facilities.
- Some wireless devices may affect the performance of the hearing aids. For any such problems, consult your service provider.
- If you are using an electronic medical device, consult the doctor or device manufacturer to confirm whether the radio wave affects the operation of this device.

Area with Inflammables and Explosives

To prevent explosions and fires in areas that are stored with inflammable and explosive devices, do not use your wireless device and observe the rules. Areas stored with inflammables and explosives include but are not limited to the following:

- Gas station.
- Fuel depot (such as the bunk below the deck of a ship).
- Container/Vehicle for storing or transporting fuels or chemical products.

- Area where the air contains chemical substances and particles (such as granule, dust, or metal powder).
- Area indicated with the "Explosives" sign.
- Area indicated with the "Power off bi-direction wireless equipment" sign.
- Area where you are generally suggested to stop the engine of a vehicle.

Traffic Security

- Observe local laws and regulations while using the wireless device. To prevent accidents, do not use your wireless device while driving.
- RF signals may affect electronic systems of motor vehicles. For more information, consult the vehicle manufacturer.
- In a motor vehicle, do not place the wireless device over the air bag or in the air bag deployment area. Otherwise, the wireless device may hurt you owing to the strong force when the air bag inflates.
- Observe the rules and regulations of airline companies. When boarding, switch off your wireless device. Otherwise, the radio signal of the wireless device may interfere with the plane control signals.

Safety of Children

Do not allow children to use the wireless device without guidance. Small and sharp components of the wireless device may cause danger to children or cause suffocation if children swallow the components.

Environment Protection

Observe the local regulations regarding the disposal of your packaging materials, used wireless device and accessories, and promote their recycling.

WEEE Approval

The wireless device is in compliance with the essential requirements and other relevant provisions of the Waste Electrical and Electronic Equipment Directive 2002/96/EC (WEEE Directive).

RoHS Approval

The wireless device is in compliance with the restriction of the use of certain hazardous substances in electrical and electronic equipment Directive 2002/95/EC (RoHS Directive).

Laws and Regulations Observance

Observe laws and regulations when using your wireless device. Respect the privacy and legal rights of the others.

Care and Maintenance

It is normal that your wireless device gets hot when you use it. Before you clean or maintain the wireless device, stop all applications and disconnect the wireless device from your PC.

- Use your wireless device and accessories with care and in clean environment. Keep the wireless device from a fire or a lit cigarette.
- Protect your wireless device and accessories from water and vapor and keep them dry.
- Do not drop, throw or bend your wireless device.
- Clean your wireless device with a piece of damp and soft antistatic cloth. Do not use any chemical agents (such as alcohol and benzene), chemical detergent, or powder to clean it.
- Do not leave your wireless device and accessories in a place with a

considerably low or high temperature.

- Use only accessories of the wireless device approved by the manufacturer. Contact the authorized service center for any abnormality of the wireless device or accessories.
- Do not dismantle the wireless device or accessories. Otherwise, the wireless device and accessories are not covered by the warranty.

Emergency Call

This wireless device functions through receiving and transmitting radio signals. Therefore, the connection cannot be guaranteed in all conditions. In an emergency, you should not rely solely on the wireless device for essential communications.

Specific Absorption Rate (SAR)

Your wireless device is a radio transmitter and receiver. It is designed not to exceed the limits for exposure to radio waves recommended by international guidelines. These guidelines were developed by the independent scientific organization ICNIRP and include safety margins designed to assure the protection of all persons, regardless of age and health.

Regulatory Information

The following approvals and notices apply in specific regions as noted.

CE Approval (European Union)

The wireless device is approved to be used in the member states of the EU. The wireless device is in compliance with the essential requirements and other relevant provisions of the Radio and Telecommunications Terminal Equipment Directive 1999/5/EC (R&TTE Directive).

In Europe, the SAR limit for mobile devices used by the public is 2.0 watts/kg

(W/kg) averaged over 10 grams of tissue for the body or head (4.0 W/kg averaged over 10 grams of tissue for the extremities - hands, wrists, ankles and feet). The standard incorporates a substantial margin of safety to give additional protection for the public and to account for any variations in measurements.

Federal Communications Commission Notice (United States): Before a wireless device model is available for sale to the public, it must be tested and certified to the FCC that it does not exceed the limit established by the government-adopted requirement for safe exposure.

FCC Statement

In the United States and Canada, the SAR limit for mobile devices used by the public is 1.6 watts/kg (W/kg) averaged over 1 gram of tissue for the body or head (4.0 W/kg averaged over 10 grams of tissue for the extremities - hands, wrists, ankles and feet). The standard incorporates a substantial margin of safety to give additional protection for the public and to account for any variations in measurements.

SAR compliance has been established in typical laptop computer(s) with USB slot, and product could be used with typical laptop computer. Other application like handheld PC or co-transmitting with other high power transmitter(s) within 20cm have not been verified and may not comply with relevant RF exposure rules. Please consult manufacture(s) before such use.

15.19

NOTICE:

This device complies with Part 15 of the FCC Rules [and with RSS-210 of Industry Canada].

Operation is subject to the following two conditions:

- (1) this device may not cause harmful interference, and
- (2) this device must accept any interference received, including interference that

may cause undesired operation.

15.21

NOTICE:

Changes or modifications made to this equipment not expressly approved by (HUAWEI)

may void the FCC authorization to operate this equipment.

15.105

NOTE: This equipment has been tested and found to comply with the limits for a Class B digital device, pursuant to Part 15 of the FCC Rules. These limits are designed to provide reasonable protection against harmful interference in a residential installation. This equipment generates, uses and can radiate radio frequency energy and, if not installed and used in accordance with the instructions, may cause harmful interference to radio communications. However, there is no guarantee that interference will not occur in a particular installation. If this equipment does cause harmful interference to radio or television reception, which can be determined by turning the equipment off and on, the user is encouraged to try to correct the interference by one or more of the following measures:

- Reorient or relocate the receiving antenna.
- Increase the separation between the equipment and receiver.
- Connect the equipment into an outlet on a circuit different from that to which the receiver is connected.
- Consult the dealer or an experienced radio/TV technician for help.

Version: V100R001_01 Part Number: 3101****