

User's Guide

PCDH5072HS

3G/4G Dual Mode Wireless Router

www.sprint.com

©2011 Sprint. SPRINT and the logo are trademarks of Sprint.
Other marks are the property of their respective owners.

3/8/11



Introduction

This **User's Guide** introduces you to Sprint® service and the features of your router. It's divided into four sections:

- ◆ Section 1: Getting Started
- ◆ Section 2: Installing and Startup
- ◆ Section 3: Quick Start Guide
- ◆ Section 4: Safety and Warranty Information

Note: Because of updates in the router software, this user's guide may not be the most current version for your router. Visit www.sprint.com and sign on to **My Sprint** to access the most recent version of the user's guide.

WARNING: Please refer to the **Important Safety Information** section on page 16 to learn about information that will help you safely use your router. Failure to read and follow the Important Safety Information in this user's guide may result in serious bodily injury, death, or property damage.

Legal Notice

Copyright © Sprint and its licensors. 2011. All rights reserved.

No part of this document may be reproduced or transmitted in any form or by any means without prior written consent of Sprint and its licensors.

The product described in this manual may include copyrighted software of Sprint and its possible licensors. Customers shall not in any manner reproduce, distribute, modify, decompile, disassemble, decrypt, extract, reverse engineer, lease, assign, or sublicense the said software, unless such restrictions are prohibited by applicable laws or such actions are approved by respective copyright holders under licenses.

Trademarks and Permissions

Sprint, sprint, SPRINT and the logo are trademarks or registered trademarks of Sprint.

Other trademarks, product, service and company names mentioned are the property of their respective owners.

Notice

Some features of the product and its accessories described herein rely on the software installed, capacities and settings of local network, and may not be activated or may be limited by local network operators or network service providers. Thus the descriptions herein may not exactly match the product or its accessories you purchase.

Sprint reserves the right to change or modify any information or specifications contained in this manual without prior notice or obligation.

NO WARRANTY

THE CONTENTS OF THIS MANUAL ARE PROVIDED "AS IS". EXCEPT AS REQUIRED BY APPLICABLE LAWS, NO WARRANTIES OF ANY KIND, EITHER EXPRESS OR IMPLIED, INCLUDING BUT NOT LIMITED TO, THE IMPLIED WARRANTIES OF MERCHANTABILITY AND FITNESS FOR A PARTICULAR PURPOSE, ARE MADE IN RELATION TO THE ACCURACY, RELIABILITY OR CONTENTS OF THIS MANUAL.

TO THE MAXIMUM EXTENT PERMITTED BY APPLICABLE LAW, IN NO CASE SHALL SPRINT BE

LIABLE FOR ANY SPECIAL, INCIDENTAL, INDIRECT, OR CONSEQUENTIAL DAMAGES, OR LOST PROFITS, BUSINESS, REVENUE, DATA, GOODWILL OR ANTICIPATED SAVINGS.

Import and Export Regulations

Customers shall comply with all applicable export or import laws and regulations and will obtain all necessary governmental permits and licenses in order to export, re-export or import the product mentioned in this manual including the software and technical data therein.

Section 1
Getting Started



1A. Setting Up Service

- ◆ Setting Up Your Router (page 2)
- ◆ Activating Your Router (page 3)
- ◆ Sprint Account Passwords (page 3)
- ◆ Getting Help (page 4)

Setting Up Your Router

1. Remove the back cover.
 - Simply slide the cover down (in the direction of the arrow in Figure A). You may hear a pop sound.
2. Install the battery.
 - Remove the battery from its packaging.
 - As shown in Figure B, Insert the battery into the opening in the back of the router, making sure the

connectors align, and gently press down to secure the battery.



3. Install the back cover onto your router.
 - Place the back cover on the back of the router, then slide up (in the direction of the arrow in Figure C). You may hear a click sound.



Figure A

Figure B

Figure C

4. Press  on the right side of the router to turn the router on.
 - If your router is activated, it will turn on, search for Sprint service, and enter standby mode.
 - If your router is not yet activated, see “Activating Your Router” on page 3 for more information.
5. Make your first wireless connection with a wireless client through Wi-Fi.
 - Press  on the right side of the router for about two seconds, and then the Wi-Fi SSID and the key

of the router displays on the screen for about five seconds. Take down the SSID and the network key.

- From a wireless client such as a PC on which a wireless network adapter is installed, search for the wireless network of the router which is named with the SSID you have taken down.
- Connect the wireless client to the Wireless network of the router with the key you have taken down.

Note: Your router's battery should have enough charge for your router to turn on and find a signal, and set up wireless connections with wireless clients. You should fully charge your battery as soon as possible. See "Charging the Battery" on page 13 for details.



Activating Your Router

- **If you purchased your router at a Sprint Store**, it is probably activated and ready to use.
- **If you received your router in the mail and it is for a new Sprint account or a new line of service**, it is designed to activate automatically. To confirm your activation, make a wireless connection with a wireless client.

- **If you received your router in the mail and you are activating a new router for an existing number on your account**, you will need to go online to activate your new router.

- From your computer's Web browser, go to www.sprint.com/activate and complete the onscreen instructions to activate your router.

When you have finished, make a wireless connection with a wireless client to confirm your activation. If your router is still not activated or you do not have access to the Internet, contact Sprint Customer Service at **1-888-211-4727** for assistance.

Tip: Do not press  while the router is being activated. Pressing  cancels the activation process.

Note: If you are having difficulty with activation, contact Sprint Customer Service by dialing **1-888-211-4727** for assistance.

Sprint Account Passwords

As a Sprint customer, you enjoy unlimited access to your personal account information and your data services account. To ensure that no one else has

access to your information, you will need to create passwords to protect your privacy.

Account Username and Password

If you are the account owner, you will create an account username and password when you sign on to www.sprint.com. (Click **Sign in** and then click **Sign up now!** to get started.) If you are not the account owner (if someone else receives the bill for your Sprint service), you can get a sub-account password at www.sprint.com.

Data Services Password

With your Sprint router, you may elect to set up an optional data services password to control access and authorize Premium Service purchases.

For more information, or to change your passwords, sign on to www.sprint.com or call Sprint Customer Service at **1-888-211-4727**.

Getting Help

Managing Your Account

Online: www.sprint.com

- Access your account information.
- Check your minutes used (depending on your Sprint service plan).
- View and pay your bill.
- Enroll in Sprint online billing and automatic payment.
- Purchase accessories.
- Shop for the latest Sprint phones.
- View available Sprint service plans and options.
- Learn more about data services and other products.

From A Phone

- Sprint Customer Service: **1-888-211-4727**.
- Business Customer Service: **1-800-927-2199**.

For more information or to see the latest in products and services, visit us online at www.sprint.com.

Section 2

Installing and Startup

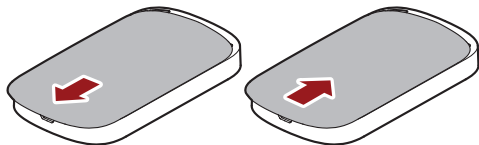


2A. Installing and Startup

- ◆ Removing or Installing the Back Cover (page 6)
- ◆ Installing or Removing the Battery (page 6)
- ◆ Installing or Removing a Micro SD card (optional) (page 7)
- ◆ Threading a strap (optional) (page 7)
- ◆ Charging the Battery (page 7)
- ◆ Powering On the Modem (page 8)

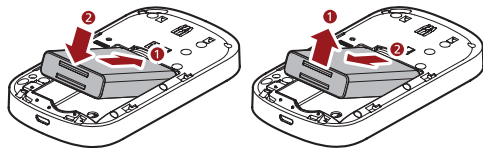
Removing or Installing the Back Cover

To remove or install the back cover, you can just slightly slide down or slide up the back cover refer to the following figures.



Installing or Removing the Battery

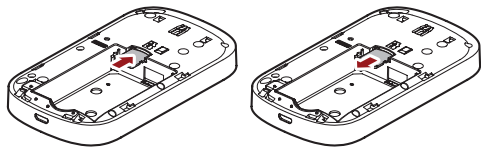
To install or remove the battery, refer to the following figures.



Installing or Removing a Micro SD card (optional)

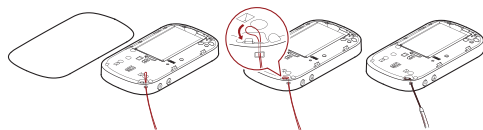
WARNING: Before installing or removing a micro SD card, power off the router to protect the router and the SD card from being damaged.

You can install a micro SD card to use the router as a USB storage device. To install or remove a micro SD card, refer to the following figures.



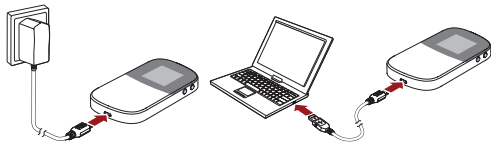
Threading a strap (optional)

To thread a strap to the router through the strap holes, refer to the following figures.



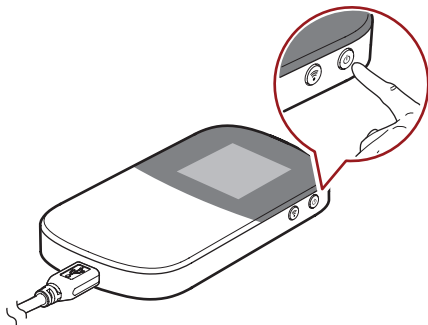
Charging the Battery

You can charge the battery by connecting the router with the battery installed to the charger or to a PC through the USB cable, as shown in the following figures.



Powering On the Router

To power on the router, press and hold the power button at the top right side of the router for about five seconds, and then the router is powered on.



Note: If the router is powered on, press and hold the power button for about five seconds, and then the router is powered off.

Section 3

Quick Start Guide



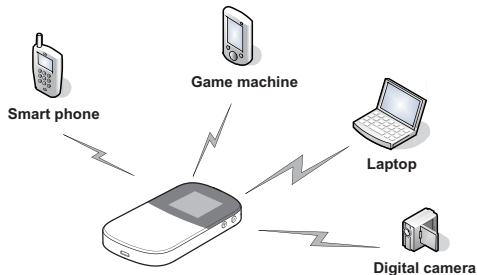
3A. Quick Start Guide

- ◆ Accessing the Internet via Wi-Fi (page 10)
- ◆ Accessing the Internet via USB (page 11)
- ◆ Checking the status of the router via the screen (page 12)
- ◆ Configuration Requirements for the PC (page 12)
- ◆ Configuration Requirements for the PC (page 12)
- ◆ Manually Connecting to or Disconnecting from the Network (page 13)
- ◆ For More Information (page 13)
- ◆ Frequently Asked Questions (FAQ) (page 13)

Accessing the Internet via Wi-Fi

You can connect the router to a computer or other Wi-Fi devices via Wi-Fi to access the Internet.

Note: By default, the management parameters are preset on the router according to the requirements of the service provider. For details about how to change the management parameters, refer to the Help on the Web management page.



You can refer to the following steps to quickly access the Internet via Wi-Fi:

1. Power on the router.
2. Establish a Wi-Fi connection.

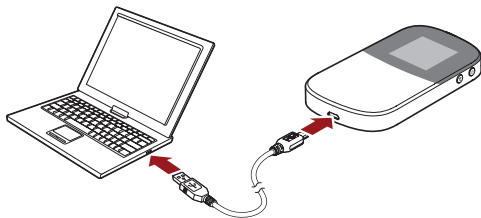
...the details...is about to clarify...

3. Access the Internet.

Accessing the Internet via USB

You can connect the router to a computer via USB to access the Internet, and refer to the following steps:

1. Log in to the operating system as an administrator.
2. Connect the router and the computer through the USB cable.

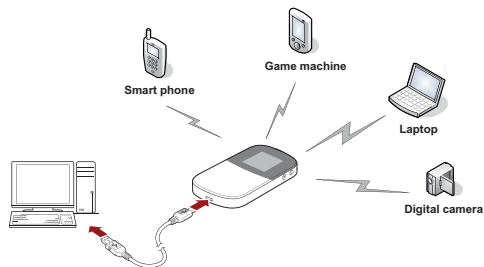


3. Power on the router.

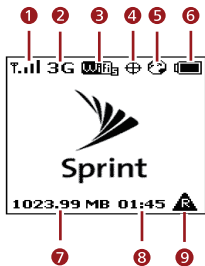
4. The operating system automatically detects and recognizes the new hardware and start the installation wizard of the router driver if you connect the router and the computer via USB for the first time.

Note: If the auto-run program does not respond, find the xxx.exe file in the virtual driver path. Then double-click xxx to run the program.

You can also access the internet via USB and Wi-Fi at the same time as shown in the following figure.



Checking the status of the router via the screen



- 1 Signal status
- 2 3G/4G status
- 3 Wi-Fi status
- 4 GPS status
- 5 Internet connection

- 6 Battery status
- 7 Amount of data transferred
- 8 Connection duration
- 9 Roaming

Configuration Requirements for the PC

Your PC must meet the following configuration requirements for configuring the router. Otherwise, the operation performance may be degraded.

Requirements Description	
CPU	Pentium 500 MHz or higher
Memory	128 MB RAM or higher
Hard disk memory	Available space of 50 MB
Operating system	Windows XP, Windows Vista, or Windows7
Screen resolution	1024 x 768 pixels or higher
Internet browser	Internet Explorer 6.0 or higher

Accessing the Web Management Page

Note: To work with the web management page of the router, Internet Explorer 6.0 and later versions is recommended, and the recommended screen resolution is 1024 by 768 pixels.

Take a PC, the Windows XP operating system and the Internet Explorer 6.0 for example, to access the web management page, refer to the following steps:

1. Make sure that the router is properly connected to the PC via Wi-Fi or USB.
2. Start the Internet Explorer, enter `http://192.168.1.1` in the address bar and press Enter. The web management page opens.

Manually Connecting to or Disconnecting from the Network

To manually connect to or disconnect from the network, refer to the following steps:

1. Access the web management page.
2. Click **Connect** to connect to the network if you have not connected to it, or click **Disconnect** to disconnect from the network if you have connected to it.

For More Information

For more information, you can access the web management page and click **Help** to see the online help.

Note: To read the online help, you need to install the Adobe Reader 6.0 or higher versions.

Frequently Asked Questions (FAQ)

What can I do if the network signals cannot be searched out?

1. Check and ensure that the router is placed in an open space where it is away from obstacles such as concrete or wooden walls.

2. Check and ensure that the device is placed away from any household appliance that produces a strong electric or magnetic field, such as a microwave oven, a refrigerator, or a satellite dish antenna.
3. Check and ensure that you are in the service area.
4. If the problem still persists, please consult your service provider.

What can I do if the Client connected to the router cannot access the Internet?

1. Check and ensure that the Client is connected to the router properly.
2. Check and ensure that the router is powered on.
3. Check the signal strength to ensure that the area is covered by the network.
4. Check that the network adapter of your Client runs properly.
5. If the problem still persists, please consult your service provider.

What can I do if the Client cannot access the WLAN?

1. If there are interferences or shields near the E5, you can adjust the position of the router.
2. Check the SSID, wireless security type, and encryption key settings of your Client are the same as those of your router.
3. If the problem still persists, please consult your service provider.

Section 4
***Safety and Warranty
Information***



4A. Important Safety Information

- ◆ General Precautions (page 16)
- ◆ Environmental Requirements for Using the Device (page 17)
- ◆ Precautions for Using Wireless Devices (page 18)
- ◆ Areas with Inflammables and Explosives (page 18)
- ◆ Accessory Requirements (page 19)
- ◆ Battery and Charger (page 19)
- ◆ Safety of Children (page 21)
- ◆ Traffic Security (page 21)
- ◆ Traffic Security (page 21)
- ◆ Environmental Protection (page 22)
- ◆ Specific Absorption Rates (SAR) (page 22)
- ◆ Body-Worn Operation (page 22)
- ◆ Federal Communications Commission (FCC) Notice (page 23)

This guide contains important operational and safety information that will help you safely use the device.

Failure to read and follow the information provided in this guide may result in serious bodily injury, death, or property damage.

Note: Unless otherwise specified, the term "device" refers to the device and its accessories.

General Precautions

- During storage, transportation, and operation of the device, keep it dry and prevent it from colliding with other objects.
- Do not dismantle the device. In case of any fault, contact an authorized service center for assistance or repair.
- Without authorization, no organization or individual can change the mechanical, safety, or performance design of the device.
- When using the device, observe all applicable laws and regulations and respect the legal rights of other people.

- Although the device is quite sturdy, it is a complex piece of equipment and can be broken. Avoid dropping, hitting, bending, or sitting on it.
- Any changes or modifications to the device not expressly approved in this guide could void your warranty for this device and void your authority to operate this device.

Environmental Requirements for Using the Device

- Keep the device far from sources of heat and fire, such as a heater or a candle.
- Keep the device far from electronic appliances that generate strong magnetic or electric fields, such as a microwave oven or a refrigerator.
- Place the device on a stable surface.
- Place the device in a cool and well-ventilated indoor area. Do not expose the device to direct sunlight for extended periods of time (such as on the dashboard of a car).
- Keep the ambient temperature between 32° F (0° C) and 113° F (45° C) while the device is being charged.

- Keep the ambient temperature between 32° F (0° C) and 104° F (40° C) for using the device powered by a battery.
- Do not use or charge the device in dusty, damp, and dirty places. Otherwise, it may result in a malfunction of the circuit.
- Do not block the openings on the device with any object. Reserve a minimum space of 10 cm around the device for heat dissipation.
- Avoid exposing the device and accessories to rain or liquid spills. If the device does get wet, immediately turn the power off and remove the battery, remove all the cables connected to it, and then contact an authorized service center.
- During thunderstorms, power off the device, and then remove all the cables connected to it to prevent it from getting damaged due to lightning strikes.

Precautions for Using Wireless Devices

- The device complies with the RF specifications when the device is used **in portable exposure conditions or at a distance of x cm from your body.**
- To operate the device safely and efficiently, always follow any special regulations in a given area. Turn the power off in areas where use is forbidden or when it may cause interference or danger.
- The radio waves generated by the device may interfere with the operation of other electronic devices. Before using any electrical medical device, consult its manufacturer for the restrictions on the use of the device..

Note: Always turn off the device in healthcare facilities, and request permission before using the device near medical equipment.

- Do not take the device into operating rooms, intensive care units (ICUs), or coronary care units (CCUs).

Areas with Inflammables and Explosives

- Turn the device off when you are in any area that has a potentially inflammable or explosive atmosphere. Although it is rare, the device and accessories could generate sparks. Sparks can cause an explosion or fire, resulting in bodily injury or even death. These areas are often, but not always, clearly marked. They include:
 - Fueling areas such as gas stations oil depots, or chemical plants.
 - Below deck on boats.
 - Fuel or chemical transfer or storage facilities.
 - Areas where the air contains chemicals or particles such as grain, dust, or metal powders.
 - Any other area where you would normally be advised to turn off your vehicle's engine.
- Never transport or store flammable gas, flammable liquids, or explosives in the compartment of your vehicle that contains the device or accessories.

Accessory Requirements

- Use only the accessories supplied or authorized by the device manufacturer. Otherwise, the performance of the device may get affected, the warranty for the device or the laws and regulations related to telecommunications terminals may become null and void, or an injury may occur.
- Do not use the accessories if they are damaged. Otherwise, electric shocks or fires may occur.
- For pluggable device, the socket-outlet shall be installed near the device and shall be easily accessible.

Battery and Charger

- The power supply must be a Limited Power Source in accordance with the requirements of IEC 60950-1/ EN 60950-1, Clause 2.5. It must be tested and approved to national or local standards.
- Use the AC power supply defined in the specifications of the charger. An improper power voltage may cause a fire or a malfunction of the charger.

- Use the compatible charger delivered only by the manufacturer with this device model. Using charger of other device model, other manufacturers or vendors may invalidate any approval or warranty applicable to the device, result in the non-operation of the device, and cause danger.
- Unplug the charger from the electrical plug and the device when not in use.
- If the power cable is damaged (for example, the cord is exposed or broken), or the plug loosens, stop using the cable at once. Otherwise, it may lead to an electric shock, a short circuit of the charger, or a fire.
- Do not use the battery charger in direct sunlight or in high humidity areas, such as the bathroom.
- In order to avoid damage, charge the battery only in temperatures that range from 32° F to 113° F (0° C to 45° C).
- Do not connect two poles of the battery with conductors, such as metal materials, keys, or jewelries. Otherwise, the battery may be short-circuited and may cause injuries and burns on your body.
- Keep the metal contacts on top of the battery clean.

- Do not modify or remanufacture, attempt to insert foreign objects into the battery, immerse or expose to water or other liquids, expose to fire, as any damage to the battery may result in a fire, explosion or other hazard.
 - Avoid dropping the device or battery. If the device or battery is dropped, especially on a hard surface, and the user suspects damage, take it to a qualified service center for inspection.
 - Do not disassemble the battery or solder the battery poles. Otherwise, it may lead to electrolyte leakage, overheating, fire, or explosion.
 - If battery electrolyte leaks out, ensure that the electrolyte does not touch your skin and eyes. When the electrolyte touches your skin or splashes into your eyes, wash your eyes with clean water immediately and consult a doctor.
 - If there is a case of battery deformation, color change, or abnormal heating while you charge or store the battery, remove the battery immediately and stop using it. Otherwise, it may lead to battery leakage, overheating, explosion, or fire.
 - The battery can be charged and discharged hundreds of times before it eventually wears out.
- When the standby time and the talk time are shorter than the normal time, replace the battery. Danger of explosion if battery is incorrectly replaced.
- New batteries or batteries stored for a long time may take more time to charge. When charging your battery, keep it near room temperature. When storing your battery, keep it uncharged in a cool, dark, dry place. Some batteries perform best after several full charge and discharge cycles.
 - Do not store the battery in high temperature areas for long periods of time. Leaving the battery in a hot vehicle may degrade long-term performance of Li-Ion batteries. It is best to store the battery in temperatures that range from 32° F to 104° F (0° C to 40° C).
 - Be sure to recycle or dispose of used batteries in accordance with local regulations or reference instruction supplied with your device. In some areas, the disposal of batteries in household or business trash may be prohibited.

Safety of Children

The device is not a toy. Do not allow children to play with the device and keep the device and its accessories out of the reach of children. Otherwise, they may damage the device and its accessories, hurt themselves or others by mistake, or they may swallow the small components of the device, causing suffocation or other dangerous situations.

Traffic Security

- Observe local laws and regulations while using the device. To prevent accidents, do not use the device while driving. Remember that safety always comes first.
- RF signals may affect electronic systems of motor vehicles. For more information, consult the vehicle manufacturer.
- In a motor vehicle, do not place the device over the air bag or in the air bag deployment area. Otherwise, the device may hurt you owing to the strong force when the air bag inflates.

- Keep the device off while flying in an aircraft and before boarding an aircraft. Using wireless devices in an aircraft may cause danger to the operation of the aircraft and disrupt the wireless telephone network. It may also be considered illegal.

Maintenance

- If the device is not used for a long time, power it off, and then remove all the cables connected to it.
- The device and its accessories are not water-resistant. Keep them dry and protect them from water or vapor. Do not touch the device or the charger with a wet hand. Otherwise, it may lead to a short circuit, a malfunction of the device, and an electric shock to the user.
- If any exception occurs, for example, if the device emits any smoke or unusual sound or smell, stop using the device immediately, power it off, remove all the cables connected to it, and then contact an authorized service center.
- Do not trample, pull, or overbend any cable. Otherwise, the cable may get damaged, causing malfunction of the device.

- Before cleaning the device, stop using it, power it off, and then remove all the cables connected to it.
- Use a clean, soft, and dry cloth to clean the device shell. Do not use any cleaning agent or spray to clean the device shell.

Environmental Protection

- Do not dispose of the device and the accessories in a garbage can.
- Dispose of the device according to the local regulations on disposing of packing materials, exhausted batteries and abandoned devices, and support the recycling activity.

Specific Absorption Rates (SAR)

This device meets guidelines for exposure to radio waves.

This device is a low-power radio transmitter and receiver. As recommended by international guidelines, the device is designed not to exceed the limits for exposure to radio waves. These guidelines were developed by the independent scientific organization

International Commission on Non-Ionizing Radiation Protection (ICNIRP) and include safety measures designed to ensure safety for all users, regardless of age and health.

The Specific Absorption Rate (SAR) is the unit of measurement for the amount of radio frequency energy absorbed by the body when using a device. The SAR value is determined at the highest certified power level in laboratory conditions, but the actual SAR level of the device when being operated can be well below the value. This is because the device is designed to use the minimum power required to reach the network.

The SAR limit adopted by USA and Canada is 1.6 watts/kilogram (W/kg) averaged over one gram of tissue. The highest SAR value reported to the FCC and IC for this device type when tested for use in portable exposure conditions is **xx** W/kg.

Body-Worn Operation

Important safety information regarding radiofrequency (RF) radiation exposure is as follows:

- To ensure compliance with RF exposure guidelines, the device must be used with a minimum of **x.x** cm distance from the body.
- Failure to observe the instructions could result in your RF exposure exceeding the relevant guideline limits.

For more information about RF exposure, visit the FCC website at www.fcc.gov.

Federal Communications Commission (FCC) Notice

This device complies with Part 15 of the FCC Rules. Operation is subject to the following two conditions: (1) this device may not cause harmful interference, and (2) this device must accept any interference received, including interference that may cause undesired operation.

Changes or modifications not expressly approved by the party responsible for compliance could void the user's authority to operate the equipment.

Note: This equipment has been tested and found to comply with the limits for a Class B digital device, pursuant to Part 15 of the FCC Rules.

These limits are designed to provide reasonable protection against harmful interference in a residential installation. This equipment generates, uses and can radiate radio frequency energy and, if not installed and used in accordance with the instructions, may cause harmful interference to radio communications.

However, there is no guarantee that interference will not occur in a particular installation.

If this equipment does cause harmful interference to radio or television reception, which can be determined by turning the equipment off and on, the user is encouraged to try to correct the interference by one or more of the following measures:

- Reorient the direction of the internal antenna.
- Increase the separation between the equipment and receiver.
- Connect the equipment into an outlet on a circuit different from that to which the receiver is connected.
- Consult the dealer or an experienced radio/TV technician for help.

4B. Manufacturer's Warranty

◆ 12 MONTH LIMITED WARRANTY (page 25)

Your router has been designed to provide you with reliable, worry-free service. If for any reason you have a problem with the device, please refer to the manufacturer's warranty in this section.

For information regarding the terms and conditions of service for your router, please visit www.sprint.com or call Sprint Customer Service at **1-888-211-4727**.

Note: In addition to the warranty provided by your router's manufacturer, which is detailed on the following pages, Sprint offers a number of optional plans to cover your device for non-warranty claims. **Sprint Total Equipment Protection** provides the combined coverage of the **Sprint Equipment Replacement Program** and the **Sprint Equipment Service and Repair Program**, both of which are available separately. Each of these programs may be signed up for within 30 days of activating your router. For more details, please visit your nearest Sprint Store or call Sprint at **1-800-584-3666**.

12 MONTH LIMITED WARRANTY

Personal Communications Devices, LLC. (the "Company") warrants to the original retail purchaser of this handheld portable cellular telerouter, that should this product or any part thereof during normal consumer usage and conditions, be proven defective in material or workmanship that results in product failure within the first twelve (12) month period from the date of purchase, such defect(s) will be repaired or replaced (with new or rebuilt parts) at the Company's option, without charge for parts or labor directly related to the defect(s).

The antenna, keypad, display, rechargeable battery and battery charger, if included, are similarly warranted for twelve (12) months from date of purchase.

This Warranty extends only to consumers who purchase the product in the United States or Canada and it is not transferable or assignable.

This Warranty does not apply to:

(a) Product subjected to abnormal use or conditions, accident, mishandling, neglect, unauthorized alteration,

misuse, improper installation or repair or improper storage;

(b) Product whose mechanical serial number or electronic serial number has been removed, altered or defaced.

(c) Damage from exposure to moisture, humidity, excessive temperatures or extreme environmental conditions;

(d) Damage resulting from connection to, or use of any accessory or other product not approved or authorized by the Company;

(e) Defects in appearance, cosmetic, decorative or structural items such as framing and non-operative parts;

(f) Product damaged from external causes such as fire, flooding, dirt, sand, weather conditions, battery leakage, blown fuse, theft or improper usage of any electrical source.

The Company disclaims liability for removal or reinstallation of the product, for geographic coverage, for inadequate signal reception by the antenna or for communications range or operation of the cellular system as a whole.

When sending your wireless device to Personal Communications Devices for repair or service, please note that any personal data or software stored on the device may be inadvertently erased or altered. Therefore, we strongly recommend you make a back up copy of all data and software contained on your device before submitting it for repair or service. This includes all contact lists, downloads (i.e. third-party software applications, ringtones, games and graphics) and any other data added to your device. In addition, if your wireless device utilizes a SIM or Multimedia card, please remove the card before submitting the device and store for later use when your device is returned, Personal Communications Devices is not responsible for and does not guarantee restoration of any third-party software, personal information or memory data contained in, stored on, or integrated with any wireless device, whether under warranty or not, returned to Personal Communications Devices for repair or service.

To obtain repairs or replacement within the terms of this Warranty, the product should be delivered with proof of Warranty coverage (e.g. dated bill of sale), the consumer's return address, daytime phone number and/or fax number and complete description of the

problem, transportation prepaid, to the Company at the address shown below or to the place of purchase for repair or replacement processing. In addition, for reference to an authorized Warranty station in your area, you may telephone in the United States (800) 229-1235, and in Canada (800) 465-9672 (in Ontario call 416-695-3060).

THE EXTENT OF THE COMPANY'S LIABILITY UNDER THIS WARRANTY IS LIMITED TO THE REPAIR OR REPLACEMENT PROVIDED ABOVE AND, IN NO EVENT, SHALL THE COMPANY'S LIABILITY EXCEED THE PURCHASE PRICE PAID BY PURCHASER FOR THE PRODUCT.

ANY IMPLIED WARRANTIES, INCLUDING ANY IMPLIED WARRANTY OF MERCHANTABILITY OR FITNESS FOR A PARTICULAR PURPOSE, SHALL BE LIMITED TO THE DURATION OF THIS WRITTEN WARRANTY. ANY ACTION FOR BREACH OF ANY WARRANTY MUST BE BROUGHT WITHIN A PERIOD OF 18 MONTHS FROM DATE OF ORIGINAL PURCHASE. IN NO CASE SHALL THE COMPANY BE LIABLE FOR AN SPECIAL CONSEQUENTIAL OR INCIDENTAL DAMAGES FOR BREACH OF THIS OR

ANY OTHER WARRANTY, EXPRESS OR IMPLIED, WHATSOEVER. THE COMPANY SHALL NOT BE LIABLE FOR THE DELAY IN RENDERING SERVICE UNDER THIS WARRANTY OR LOSS OF USE DURING THE TIME THE PRODUCT IS BEING REPAIRED OR REPLACED.

No person or representative is authorized to assume for the Company any liability other than expressed herein in connection with the sale of this product.

Some states or provinces do not allow limitations on how long an implied warranty lasts or the exclusion or limitation of incidental or consequential damage so the above limitation or exclusions may not apply to you. This Warranty gives you specific legal rights, and you may also have other rights, which vary from state to state or province to province.

IN USA: Personal Communications Devices, LLC.
555 Wireless Blvd.
Hauppauge, NY 11788

(800) 229-1235

IN CANADA: PCD Communications Canada Ltd.

5535 Eglinton Avenue West

Suite# 234

Toronto, ON M9C 5K5

(800) 465-9672

