


Copyright © Huawei Technologies Co., Ltd. 2009. All rights reserved.

No part of this document may be reproduced or transmitted in any form or by any means without prior written consent of Huawei Technologies Co., Ltd.

The product described in this manual may include copyrighted software of Huawei Technologies Co., Ltd and possible licensors. Customers shall not in any manner reproduce, distribute, modify, decompile, disassemble, decrypt, extract, reverse engineer, lease, assign, or sublicense the said software, unless such restrictions are prohibited by applicable laws or such actions are approved by respective copyright holders under licenses.

Trademarks and Permissions



HUAWEI, **HUAWEI**, and  are trademarks or registered trademarks of Huawei Technologies Co., Ltd.

Other trademarks, product, service and company names mentioned are the property of their respective owners.

Notice

Some features of the product and its accessories described herein rely on the software installed, capacities and settings of local network, and may not be activated or may be limited by local network operators or network service providers. Thus the descriptions herein may not exactly match the product or its accessories you purchase.

Huawei Technologies Co., Ltd reserves the right to change or modify any information or specifications contained in this manual without prior notice or

obligation.

NO WARRANTY

THE CONTENTS OF THIS MANUAL ARE PROVIDED "AS IS". EXCEPT AS REQUIRED BY APPLICABLE LAWS, NO WARRANTIES OF ANY KIND, EITHER EXPRESS OR IMPLIED, INCLUDING BUT NOT LIMITED TO, THE IMPLIED WARRANTIES OF MERCHANTABILITY AND FITNESS FOR A PARTICULAR PURPOSE, ARE MADE IN RELATION TO THE ACCURACY, RELIABILITY OR CONTENTS OF THIS MANUAL.

TO THE MAXIMUM EXTENT PERMITTED BY APPLICABLE LAW, IN NO CASE SHALL HUAWEI TECHNOLOGIES CO., LTD BE LIABLE FOR ANY SPECIAL, INCIDENTAL, INDIRECT, OR CONSEQUENTIAL DAMAGES, OR LOST PROFITS, BUSINESS, REVENUE, DATA, GOODWILL OR ANTICIPATED SAVINGS.

Import and Export Regulations

Customers shall comply with all applicable export or import laws and regulations and will obtain all necessary governmental permits and licenses in order to export, re-export or import the product mentioned in this manual including the software and technical data therein.

Table of Contents

Getting to Know the EM660	2
Requirements for the PC	3
Preparing the EM660	4
Installation Guide	4
Safety Information	10

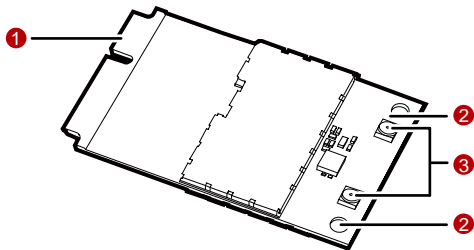
Thank you for purchasing Huawei EM660 EVDO Rev.A Module.

Note:

- This manual briefly describes the preparation, the process for installing/uninstalling, and safety precautions for using Huawei EM660 EVDO Rev.A Module (hereinafter referred to as the EM660).
- You are recommended to read the manual before using the EM660.
- The signal strength and the transmission rate are affected by the actual environment.

Getting to Know the EM660

The following figure shows the appearance of the EM660. The actual product may differ.



① Mini PCI Express connector

It is used to connect the EM660 to the WWAN Mini PCI Express interface of the PC.

② Screw holes

They are used to fix the EM660 on the main board of the PC with screws.

③ Antenna interfaces

They are used to connect antennas.

EM660 has an external antenna which connect with laptop.

The max gain which is allowed of external antenna is :

850M: <4.28dBi

1900M: <3.6dBi

Requirements for the PC

To use the EM660, the PC must meet the following requirements:

- WWAN Mini PCI Express interface.
- Windows 2000 SP4, Windows XP SP2, and Windows Vista
- Mac OS X 10.4 and 10.5 with latest upgrades
- The hardware of your PC must meet or exceed the recommended system requirements for the installed version of OS.
- Display resolution: 800 × 600 or above.

Preparing the EM660

Locate the WWAN Mini PCI Express interface on the main board of the PC. Find the main antenna and the auxiliary antenna.

If a USIM/SIM card is provided by your service provider, insert the USIM/SIM card into the USIM/SIM card slot on the main board of the PC.

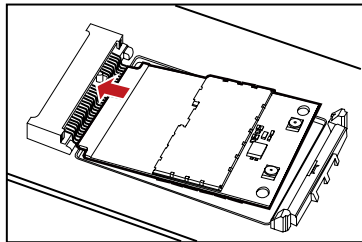
Note:

- In certain cases, your PC may be disassembled only by the professionals.
- Before you install the EM660 onto the main board of the PC, consult the PC manufacturer or read the user manual of the PC.

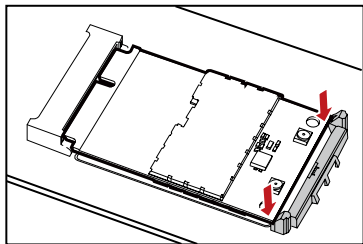
Installation Guide

Installing the EM660 onto the Main Board of the PC

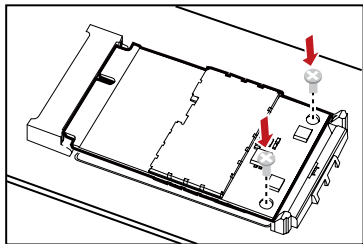
1. Insert the Mini PCI Express connector of the EM660 into the WWAN Mini PCI Express interface on the main board of the PC.



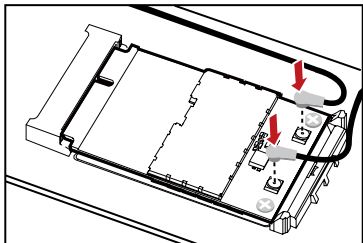
2. Press downwards to fix the EM660 in the module slot.



3. Use a screwdriver to fix the EM660 onto the main board of the PC with two screws provided in the EM660 packing box.



4. Insert the connector of the main antenna into the **MAIN** antenna interface (**M**) of the EM660 according to the indication on the label of the EM660. Insert the connector of the auxiliary antenna into the **AUX** antenna interface (**A**) of the EM660 in the same way.

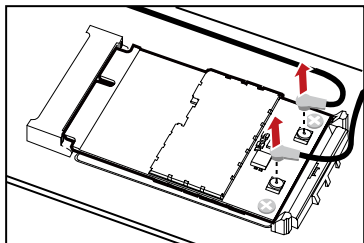


Note:

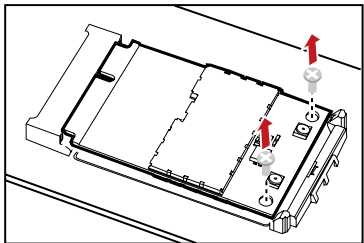
- Insert the antenna connectors vertically into the antenna interfaces of the EM660.
- Do not pinch the antenna cable or damage the connectors. Otherwise, the wireless performance of the EM660 may be reduced or the EM660 cannot work normally.
- Ensure that the antenna cables are routed through the channel in the frame of the PC and do not lay across the raised edges of the frame.

Removing the EM660 from the Main Board of the PC

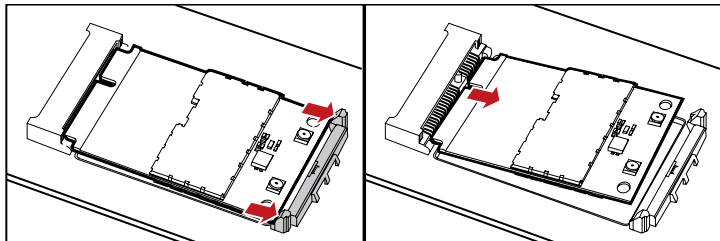
1. Disconnect the antenna cables from the EM660. You can lift the connectors with a small screwdriver.



2. Remove the two screws with the screwdriver.



- Slide backwards the two clips to release the EM660 from the slot. Then, lift up the EM660.



Installing the EM660 Software

A disk is provided in the EM660 packing box. The disk contains the management program and the driver of the EM660.

- Insert the disk into the disk drive of the PC.
- The OS automatically starts the installation wizard.

Note:

If the auto-run program does not respond, find the **AutoRun.exe** file under the disk path. Then double-click **AutoRun.exe** to run the program.

- Follow the prompts of the installation wizard.
- After the program is installed, the shortcut icon of the management program is displayed on the desktop.

Uninstalling the Management Program

1. Choose **Start > Control Panel**.
2. Find the management program, and click **Add/Remove Program** to uninstall the management program.

Note:

It is recommended to restart the PC after the uninstallation to ensure that the management program is completely uninstalled.

Safety Information

Read the safety information carefully to ensure the correct and safe use of your wireless device.

Interference

Do not use your wireless device if using the device is prohibited or when it causes danger or interference with electric devices.

Medical Device

- Do not use your wireless device and follow the rules and regulations set forth by the hospitals and health care facilities.
- Some wireless devices may affect the performance of the hearing aids. For any such problems, consult your service provider.
- If you are using an electronic medical device, consult the doctor or device manufacturer to confirm whether the radio wave affects the operation of this device.

Area with Inflammables and Explosives

To prevent explosions and fires in areas that are stored with inflammable and explosive devices, do not use your wireless device and observe the rules. Areas stored with inflammables and explosives include but are not limited to the following:

- Gas station
- Fuel depot (such as the bunk below the deck of a ship)
- Container/Vehicle for storing or transporting fuels or chemical products
- Area where the air contains chemical substances and particles (such as

granule, dust, or metal powder)

- Area indicated with the "Explosives" sign
- Area indicated with the "Power off bi-direction wireless equipment" sign
- Area where you are generally suggested to stop the engine of a vehicle

Traffic Security

- Observe local laws and regulations while using the wireless device. To prevent accidents, do not use your wireless device while driving.
- RF signals may affect electronic systems of motor vehicles. For more information, consult the vehicle manufacturer.
- In a motor vehicle, do not place the wireless device over the air bag or in the air bag deployment area. Otherwise, the wireless device may hurt you owing to the strong force when the air bag inflates.
- Observe the rules and regulations of airline companies. When boarding, switch off your wireless device. Otherwise, the radio signal of the wireless device may interfere with the plane control signals.

Safety of Children

Do not allow children to use the wireless device without guidance. Small and sharp components of the wireless device may cause danger to children or cause suffocation if children swallow the components.

Environment Protection

Observe the local regulations regarding the disposal of your packaging materials, used wireless device and accessories, and promote their recycling.

WEEE Approval

The wireless device is in compliance with the essential requirements and other relevant provisions of the Waste Electrical and Electronic Equipment Directive 2002/96/EC (WEEE Directive).

RoHS Approval

The wireless device is in compliance with the restriction of the use of certain hazardous substances in electrical and electronic equipment Directive 2002/95/EC (RoHS Directive).

Laws and Regulations Observance

Observe laws and regulations when using your wireless device. Respect the privacy and legal rights of the others.

Care and Maintenance

It is normal that your wireless device gets hot when you use or charge it. Before you clean or maintain the wireless device, stop all applications and power off the wireless device.

- Use your wireless device and accessories with care and in clean environment. Keep the wireless device from a fire or a lit cigarette.
- Protect your wireless device and accessories from water and vapor and keep them dry.
- Do not drop, throw or bend your wireless device.
- Clean your wireless device with a piece of damp and soft antistatic cloth. Do not use any chemical agents (such as alcohol and benzene), chemical detergent, or powder to clean it.
- Do not leave your wireless device and accessories in a place with a

considerably low or high temperature.

- Use only accessories of the wireless device approved by the manufacture. Contact the authorized service center for any abnormality of the wireless device or accessories.
- Do not dismantle the wireless device or accessories. Otherwise, the wireless device and accessories are not covered by the warranty.

Emergency Call

This wireless device functions through receiving and transmitting radio signals. Therefore, the connection cannot be guaranteed in all conditions. In an emergency, you should not rely solely on the wireless device for essential communications.

Regulatory Information

The following approvals and notices apply in specific regions as noted.

Federal Communications Commission Notice (United States): Before a wireless device model is available for sale to the public, it must be tested and certified to the FCC that it does not exceed the limit established by the government-adopted requirement for safe exposure.

FCC Statement

This device complies with Part 15 of the FCC Rules. Operation is subject to the following two conditions: (1) this device may not cause harmful interference, and (2) this device must accept any interference received, including interference that may cause undesired operation.

The antenna(s) used for this transmitter must be installed to provide a separation distance of at least 20cm from all persons and must not be co-located or operate in conjunction with any other antenna or transmitter

Version: V100R001_01 Part Number: 3101****