

AT&T GoPhone® Phone & Feature Guide



Phone Overview



Need more help?

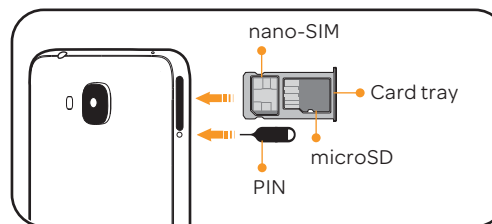
Go to APPS > ATT > Device Help

Setting Up Your Phone

Follow the instructions below to install a nano-SIM card and microSD card. Then press and hold the power button to turn on your phone.

Installing a SIM Card

Your new GoPhone SIM card is pre-installed. If you are an existing AT&T customer, replace it with your current SIM (see instructions below).



1. Remove the card tray. Insert the SIM eject PIN included with your phone into the small hole next to the card tray.
2. Insert a nano-SIM card or microSD card into the card tray.
3. Insert the card tray back into your phone in the correct orientation.

If your SIM card does not fit, use the pre-installed SIM and call Customer Care at 800.331.0500. Follow the voice prompts to speak to a representative.

Find More Information

Manage Your Account with MyAT&T

- On your phone: APPS > MyATT
- On the web: att.com/mygophone



With MyAT&T, you can:

- Add money to your account
- Change your plan
- Add a package
- Track your usage
- And more

Compatible device and online account required. Data and messaging rates may apply for download and app usage.

Need More Help?

- On your phone: APPS > AT&T > Device Help
- On the web: att.com/devicehowto



Give us a call

- 800.901.9878
- 611 from any AT&T wireless phone

Accessories

- att.com/wirelessaccessories
- Visit your AT&T store

Product meets FCC Radio Frequency Exposure Guidelines – FCC ID: Q1SH1611. This device complies with Part 15 of the FCC Rules. Operation is subject to the following two conditions: (1) this device may not cause harmful interference, and (2) this device must accept any interference received, including interference that may cause undesired operation. HUAWEI and are trademarks or registered trademarks of Huawei Technologies Co., Ltd. Other trademarks, product, service and company names mentioned may be the property of their respective owners. © 2016 AT&T Intellectual Property. All rights reserved. AT&T, the AT&T logo and all other AT&T marks contained herein are trademarks of AT&T Intellectual Property and/or AT&T.



Printed in China

P/N: 31010WHN_01

H1611



Camera and Video Sharing Photos

On the home screen, touch **Camera**.



Frame the scene you want to capture

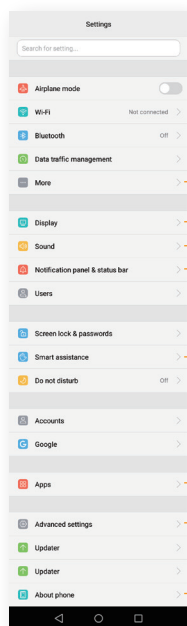
Let your camera focus automatically or touch the screen to focus on that specific area

Switch capture modes
Add a filter

Capture
View images or videos, touch **Share** share it with your friends through Email, Bluetooth, etc

Settings

On the home screen, touch **⋮** > **⚙️**.



Mobile network, hotspot

Screen display settings
Volume settings
Battery percentage

Motion control, one-hand UI, gloves mode

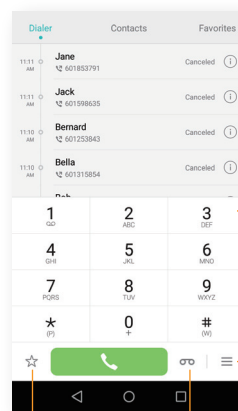
App permissions

Security, location access

Legal information

Calls and Voicemail

On the home screen, touch **Contacts** > **Dialer**.



Call log

Enter the initials of a contact's name, or part of the contact's phone number

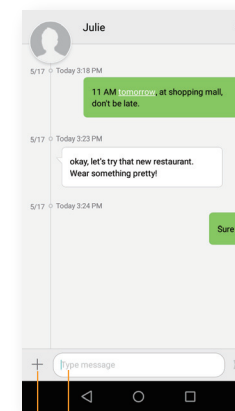
Call settings

Check your voicemail

Add to Favorites

Text Messaging

On the home screen, touch **Messaging**.



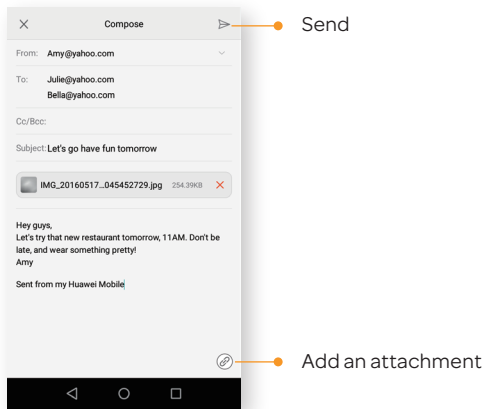
Send

Write your message

Attach a file

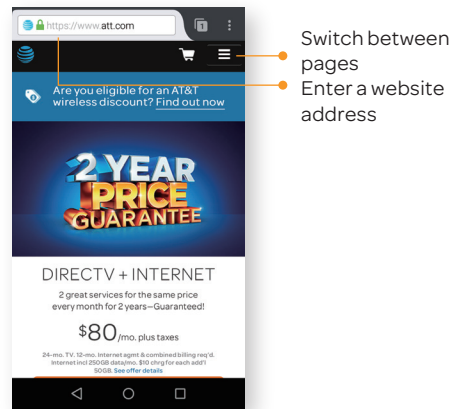
Email

On the home screen, touch **Email**. Enter your email address, password, and other information. Follow the onscreen instructions to configure your account. Touch **Compose** to start an Email.



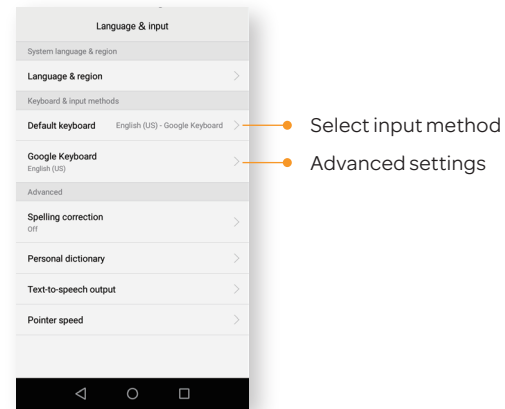
Web

On the home screen, flick down from the status bar to open the shortcuts panel. Touch to turn on your phone's mobile network. On the home screen, touch **Firefox**.



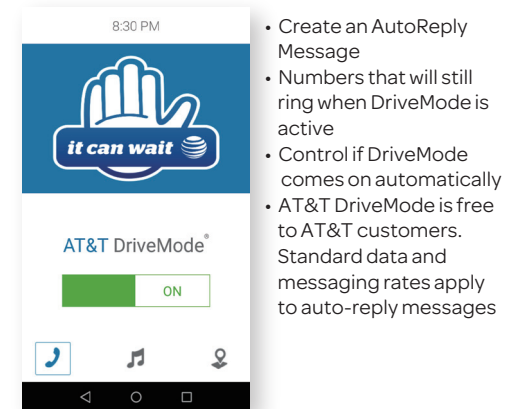
Keyboarding

On the home screen, touch > . Touch **Advanced settings** > **Language & input**.



AT&T DriveMode™

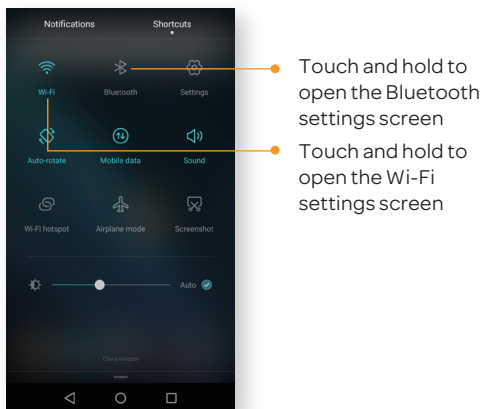
When your vehicle is in motion, automatically respond to incoming texts and emails. Texting while driving...it can wait. Tap AT&T DriveMode in the app tray to open the app.



Wi-Fi and Bluetooth

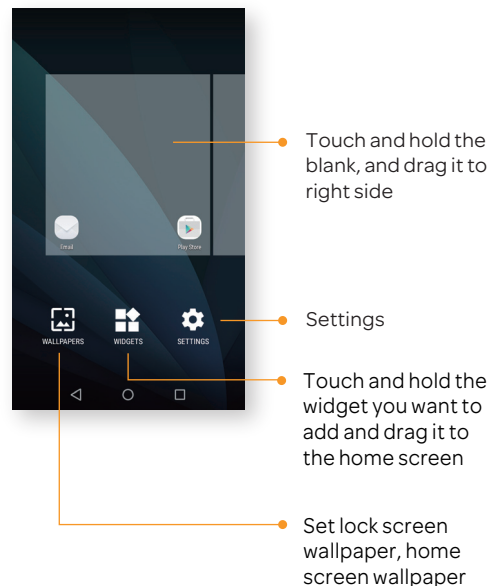
On the home screen, flick down from the status bar to open the shortcuts panel.

- Touch to turn on Wi-Fi.
- Touch to turn on Bluetooth.



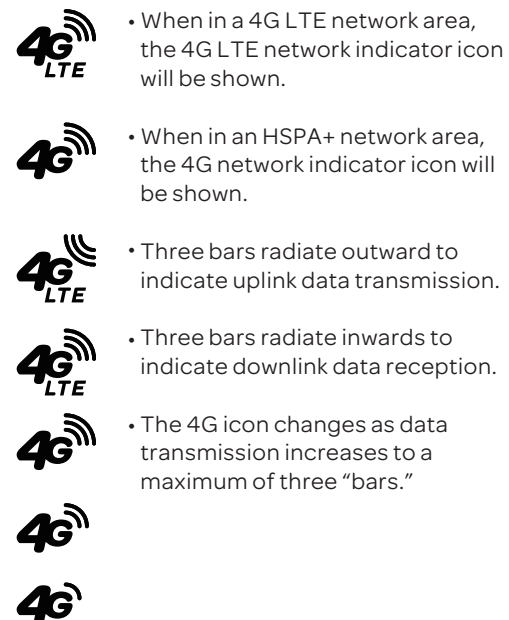
Customize

On the home screen, touch and hold a blank area.



Network Indicators

Network indicators are displayed on the right-hand side of the status bar.



Play Store

Google Play Store has apps, games, music, movies, and much more! Come check out the Play Store and get more apps for your new phone.

AT&T APPS

AT&T offers a multitude of apps designed to make your everyday life easier.

