

HG630 V2 Home Gateway Quick Start

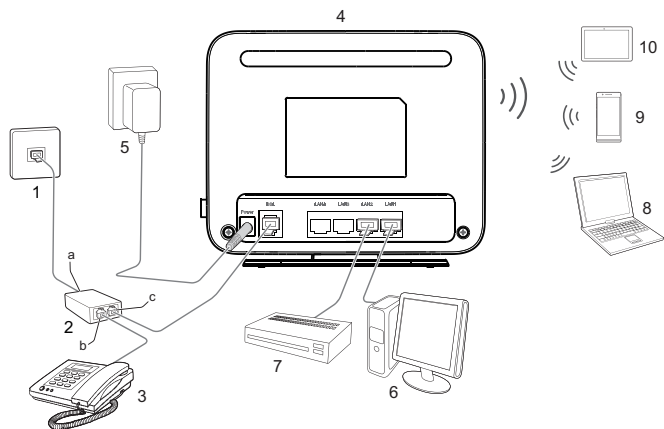
1 Connecting Cables

Installing the HG630 V2 on a DSL Broadband Network

In some communities, Internet service providers use telephone lines to provide broadband access services.

If you have subscribed to digital subscriber line (DSL) broadband, you can connect the HG630 V2 to a telephone port for Internet access.

Follow the steps in the following figure to connect devices properly.



1 Telephone wall jack

2 Splitter

3 Telephone

4	HG630 V2	5 Power adapter	6 Desktop computer
7	Set-top Box	8 Laptop computer	9 Smart Phone
10	Pad		
a	LINE port	b PHONE port	c MODEM port



When configuring the HG630 V2 for the first time, use an Ethernet cable to connect the HG630 V2 to a computer

2 Powering On

To power on the HG630 V2, press its power button.

After the HG630 V2 is powered on, the HG630 V2 indicator turns on. The following table lists how the indicators behave when the HG630 V2 is operating correctly. If the indicators do not behave as expected, ensure that everything is plugged in correctly.


Indicator	Expected State	Description
Power	Steady on	The HG630 V2 is powered on.
WAN	Steady on	A digital subscriber line (DSL) connection has been set up and activated.
	Blinking	A DSL connection is being activated.
Internet	Steady on	The HG630 V2 is connected to the Internet in router mode, but no data is being transmitted.
	Blinking	The HG630 V2 is connected to the Internet in router mode, and data is being transmitted.

Indicator	Expected State	Description
WLAN	Steady on	The HG630 V2 has WLAN enabled, but is not transmitting data.
	Blinking	The HG630 V2 has WLAN enabled, and data is being transmitted.
WPS	Steady on	The HG630 V2 is connected to a wireless client, such as a computer with a wireless network adapter, over the WLAN using the Wi-Fi Protected Setup (WPS) function. The WPS indicator is steady on for 300 seconds.
	Blinking	The HG630 V2 is attempting to connect to a wireless client over the WLAN using the WPS function.
LAN1 ~ LAN4	Steady on	The LAN port is connected to an Ethernet device (such as a computer) with a network cable, but no data is being transmitted.
	Blinking	The LAN port is connected to an Ethernet device with a network cable, and data is being transmitted.
USB	Steady on	The HG630 V2 is connected to a USB device, but no data is being transmitted.
	Blinking	The HG630 V2 is connected to a USB device, and data is being transmitted.

3 Setting the Computer IP Address

Before logging in to the HG630 V2 web management page, set the IP address of the computer that will be used for the login.

On Windows 7

1. Click  in the lower right corner of your desktop. Choose **Open Network and Sharing Center**.
2. Choose **Change adapter settings**. Right-click **Local Area Connection** and choose **Properties**.
3. Double-click **Internet Protocol Version 4 (TCP/IPv4)**.
4. Select **Obtain an IP address automatically** and **Obtain DNS server address automatically**. Click **OK**.

4 Setting Network Access Parameters

Configuring an Automatical Connection to Access the Internet

The HG630 V2 supports you to choose the proper connection mode automatically to access the Internet, meaning you do not need to install dial-up software or perform dial-up operations on your computer and just following the wizard page.

To set up an automatical connection to access the Internet:

1. Open a browser on your computer. In the address box, enter 192.168.1.1. Press **Enter** to access the web management page.
2. On the login page, enter the login user name (**user** by default) and password (**HuaweiUser** by default). Click **Log in**.



- > To protect against unauthorized access, change the user name and password after the first login.
- > You can change the account parameters on **Maintain > Account Management** page.

3. On the **I want to...** page, click **Start Wizard**.
4. On the **I want to...Connect to the Internet** page, choose **Connect automatically**, and click **Next**.

The HG630 V2 supports DSL uplink mode, meaning you can use the HG630 V2 with a telephone port for Internet access.

After you complete the preceding settings, check the status of the Internet indicator light. When the Internet indicator light turns steady green, you can start browsing the Internet.

You need to perform the preceding operations on a computer once only. The next time you power on your computer, you can browse the Internet without performing the same configurations.

Configuring a Wireless Account

After you complete the preceding settings, click **Set Up WLAN**, you will see the **I want to Set Up WLAN** page used to configure the wireless account.

The default SSID and WLAN Key printed on the HG630 V2's rear panel are unique and secure. If you do not want to change them, just turn the **WLAN** switch on.


For security reasons or to make the password easy to remember, you can change the wireless network name and password as follows:

1. On the **I want to Set Up WLAN** page, switch on the 2.4 GHz WLAN network.
2. Enter your desired SSID (WLAN name) and WLAN password.
3. Click **Save**.

5 Wireless Connection Setup

The wireless configuration software provided by Windows is used as an example to describe how to set up a wireless connection.

On Windows 7

1. Click  in the lower right corner of your desktop.
2. From the wireless network list, select the WLAN provided by the HG630 V2. Click **Connect**.
3. In the displayed dialog box, enter the WLAN password and click **OK**.
4. In the wireless network list, check the WLAN connection status. If the status is **Connected**, the computer is wirelessly connected to the HG630 V2.

6 Safety information

This section contains important information about the operation of your device. It also contains information about how to use the device safely. Read this information carefully before using your device.

Electronic device

Do not use your device if using the device is prohibited. Do not use the device if doing so causes danger or interference with other electronic devices.

Interference with medical equipment

- > Follow rules and regulations set forth by hospitals and health care facilities. Do not use your device where prohibited.
- > Some wireless devices may affect the performance of hearing aids or pacemakers. Consult your service provider for more information.
- > Pacemaker manufacturers recommend that a minimum distance of 15 cm be maintained between a device and a pacemaker to prevent potential

interference with the pacemaker. If using a pacemaker, hold the device on the side opposite the pacemaker and do not carry the device in your front pocket.

Areas with flammables and explosives

- > Do not use the device where flammables or explosives are stored (in a gas station, oil depot, or chemical plant, for example). Using your device in these environments increases the risk of explosion or fire. In addition, follow the instructions indicated in text or symbols.
- > Do not store or transport the device in containers with flammable liquids, gases, or explosives.

Operating environment

- > Avoid dusty, damp, or dirty environments. Avoid magnetic fields. Using the device in these environments may result in circuit malfunctions.
- > Before connecting and disconnecting cables, stop using the device and disconnect it from the power supply. Ensure that your hands are dry during operation.
- > Place the device on a stable surface.
- > Keep the device away from electronic appliances that generate strong magnetic or electric fields, such as a microwave oven or refrigerator.
- > During thunderstorms, power off your device and remove all cables connected to it to protect against lightning strikes.
- > Do not use your device during thunderstorms to protect your device against any danger caused by lightning.
- > Ideal operating temperatures are 0 °C to 40 °C. Extreme heat or cold may damage your device or accessories.
- > Keep the device and accessories in a well-ventilated and cool area away from direct sunlight. Do not enclose or cover your device with towels or other objects. Do not place the device in a container with poor heat dissipation, such as a box or bag.
- > To protect your device or accessories from fire or electrical shock hazards, avoid rain and moisture.
- > Keep the device away from sources of heat and fire, such as a heater, microwave oven, stove, water heater, radiator, or candle.

- Do not place any object, such as a candle or a water container, on the device. If any foreign object or liquid enters the device, immediately stop using it, power it off, and remove all cables connected to it. Then, contact an authorized service center.
- Observe local laws and regulations, and respect the privacy and legal rights of others.
- Do not block device openings. Reserve a minimum of 10 cm around the device to dissipate heat.
- Stop using your device or applications for a while if the device is overheated. If skin is exposed to an overheated device for an extended period, low temperature burn symptoms, such as red spots and darker pigmentation, may occur.
- Do not touch the device's antenna. Otherwise, communication quality may be reduced.
- Do not allow children or pets to bite or suck the device or accessories. Doing so may result in damage or explosion.
- The device should be installed and operated with a minimum distance of 20 cm between the radiator and your body.
- Keep the device in a place with good reception. The distance between the device and other metal materials (such as metal brackets or metal doors and windows) should be greater than 25 cm and the distance between the device should be greater than 30 cm.

Child's safety

- Comply with all precautions with regard to child's safety. Letting children play with the device or its accessories may be dangerous. The device includes detachable parts that may present a choking hazard. Keep away from children.

Accessories

- Using an unapproved or incompatible power adapter, charger or battery may cause fire, explosion or other hazards.
- Choose only accessories approved for use with this model by the device manufacturer. The use of any other types of accessories may void the warranty, may violate local regulations and laws, and may be dangerous. Please contact your retailer for information about the availability of approved accessories in your area.

Power adapter safety

- > The power plug is intended to serve as a disconnect device.
- > For pluggable devices, the socket-outlet shall be installed near the devices and shall be easily accessible.
- > Unplug the power adapter from electrical outlets and the device when not in use.
- > Do not drop or cause an impact to the power adapter. If it is damaged, take it to an authorized service center for inspection.
- > If the power cable is damaged (for example, the cord is exposed or broken), or the plug loosens, stop using it at once. Continued use may lead to electric shocks, short circuits, or fire.
- > Do not touch the power cord with wet hands or pull the power cord to disconnect the power adapter.
- > Do not touch the device or the power adapter with wet hands. Doing so may lead to short circuits, malfunctions, or electric shocks.
- > If your power adapter has been exposed to water, other liquids, or excessive moisture, take it to an authorized service center for inspection.
- > Ensure that the power adapter meets the requirements of Clause 2.5 in IEC60950-1/EN60950-1/UL60950-1 and has been tested and approved according to national or local standards.

Cleaning and maintenance

- > During storage, transportation, and operation of the device, keep it dry and protect it from collision.
- > Keep the device and accessories dry. Do not attempt to dry it with an external heat source, such as a microwave oven or hair dryer.
- > Do not expose your device or accessories to extreme heat or cold. These environments may interfere with proper function and may lead to fire or explosion.
- > Avoid collision, which may lead to device malfunctions, overheating, fire, or explosion.
- > If the device is not going to be used for an extended period of time, power it off, and remove all cables connected to it.
- > If anything unusual occurs (for example, if the device emits smoke or any unusual sound or smell), immediately stop using it, power it off, remove all cables connected to it, and contact an authorized service center.

- Do not trample, pull, or excessively bend any cable. Doing so may damage the cable, causing the device to malfunction.
- Before you clean or maintain the device, stop using it, stop all applications, and disconnect all cables connected to it.
- Do not use any chemical detergent, powder, or other chemical agents (such as alcohol and benzene) to clean the device or accessories. These substances may cause damage to parts or present a fire hazard. Use a clean, soft, and dry cloth to clean the device and accessories.
- Do not place magnetic stripe cards, such as credit cards and phone cards, near the device for extended periods of time. Otherwise the magnetic stripe cards may be damaged.
- Do not dismantle or remanufacture the device and its accessories. This voids the warranty and releases the manufacturer from liability for damage. In case of damage, contact an authorized service center for assistance or repair.

Disposal and recycling information



This symbol (with or without a solid bar) on the device, batteries (if included), and/or the packaging, indicates that the device and its electrical accessories (for example, a headset, adapter, or cable) and batteries should not be disposed of as household garbage. These items should not be disposed of as unsorted municipal waste and should be taken to a certified collection point for recycling or proper disposal.

For more detailed information about device or battery recycling, contact your local city office, household waste disposal service, or retail store.

Disposal of the device and batteries (if included) is subject to WEEE Directive Recast (Directive 2012/19/EU) and Battery Directive (Directive 2006/66/EC). The purpose of separating WEEE and batteries from other waste is to minimize the potential environmental impacts and human health risk of any hazardous substances that may be present.

Reduction of hazardous substances

This device is compliant with the REACH Regulation [Regulation (EC) No 1907/2006] and RoHS Directive Recast (Directive 2011/65/EU). Batteries (if included) are compliant with the Battery Directive (Directive 2006/66/EC). For up-to-date information about REACH and RoHS compliance, please visit the web site <http://consumer.huawei.com/certification>.

EU regulatory conformance

Statement

Hereby, Huawei Technologies Co., Ltd. declares that this device is in compliance with the essential requirements and other relevant provisions of Directive 1999/5/EC.

For the declaration of conformity, visit the web site <http://consumer.huawei.com/certification>.

The following marking is included in the product:

CE 1622

This device may be operated in all member states of the EU.

Observe national and local regulations where the device is used.

This device may be restricted for use, depending on the local network.

Restrictions in the 2.4 GHz band:

Norway: This subsection does not apply for the geographical area within a radius of 20 km from the centre of Ny-Ålesund.

FCC Regulatory Compliance

FCC statement

This equipment has been tested and found to comply with the limits for a Class B digital device, pursuant to Part 15 of the FCC Rules. These limits are designed to provide reasonable protection against harmful interference in a residential installation. This equipment generates, uses and can radiate radio frequency energy and, if not installed and used in accordance with the instructions, may cause harmful interference to radio communications. However, there is no guarantee that interference will not occur in a particular installation. If this equipment does cause harmful interference to radio or television reception, which can be determined by turning the equipment off and on, the user is encouraged to try to correct the interference by one or more of the following measures:

- Reorient or relocate the receiving antenna.
- Increase the separation between the equipment and receiver.
- Connect the equipment into an outlet on a circuit different from that to which the receiver is connected.
- Consult the dealer or an experienced radio/TV technician for help.

This device complies with Part 15 of the FCC Rules. Operation is subject to the following two conditions: (1) this device may not cause harmful interference, and (2) this device must accept any interference received, including interference that may cause undesired operation.

Caution: Any changes or modifications to this device not expressly approved by Huawei Technologies Co., Ltd. for compliance could void the user's authority to operate the equipment.

This device is intended to be attached to a receiver that is not used to receive over-the-air broadcast signals. Connection of this device in any other fashion may cause harmful interference to radio communications and is in violation of the FCC Rules, part 15.

7 For More Help

Thanks for purchasing the HG630 V2 Home Gateway (HG630 V2 for short).

This quick start guide will show you how to connect your HG630 V2 to a network and access the Internet. The figures in this guide are for reference only. The appearance and display features may vary slightly depending on the actual product version.

For more information, visit <http://consumer.huawei.com/en/>.

Please visit <http://consumer.huawei.com/en/support/hotline> for recently updated hotline and email address in your country or region.

8 Legal Notice

Copyright © Huawei Technologies Co., Ltd. 2014. All rights reserved.

THIS DOCUMENT IS FOR INFORMATION PURPOSE ONLY, AND DOES NOT CONSTITUTE ANY KIND OF WARRANTIES.

Privacy Policy

To better understand how we protect your personal information, please see the privacy policy at <http://consumer.huawei.com/privacy-policy>.