

Thank you for purchasing the HW-02G. This HW-02G brings you a high speed wireless network connection.

This document will help you understand your HW-02G so you can start using it right away. Please read this document carefully before using your HW-02G.

For detailed instructions for logging in to the web management page, refer to "Logging In to the Web Management Page" on page 14.

Getting to Know Your HW-02G

Note:

The HW-02G function descriptions and illustrations in this document are for your reference only. The product you have purchased may vary.

Application Scenarios

Wi-Fi devices (such as smartphones, tablet computers, and game consoles) or computers can all access the Internet through HW-02G. The specific connection procedure depends on the operating system of the Wi-Fi device or computer. Establish a connection according to your device's specific instructions.

To access the Internet through a USB port connection, install the driver according to the instructions.

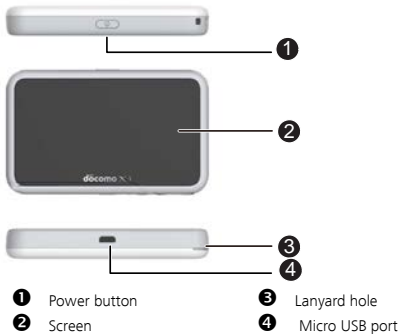
Scenario 1: Connecting multiple devices through Wi-Fi



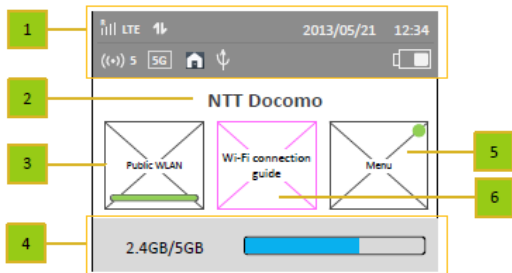
Scenario 2: Connecting multiple devices through Wi-Fi and USB simultaneously



Appearance



Screen



❶ Status bar

❷ Character zone

- When connect to GSM/3G/LTE network, show the operator name
- When connect to public Wi-Fi hotspot, show the SSID name of the hotspot
- When SIM card is not normal, show "PIN1 code required"/"PIN unlock code required";

❸ Public WLAN

User can tap on to turn on or turn off Wi-Fi.

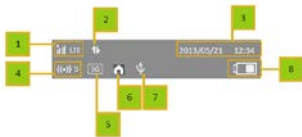
❹ Data usage information

If user set the data information, show used data and total data. If user turn off the display of data on Home screen, hide this zone.


❺ Menu

Tap on to view more functions. If user turn on Auto-check for updates and there is new available update, show an colored image on the right-up of the button.

❻ Wi-Fi connection guide



❶ Signal strength

- R: when in roaming status; Show network mode, including "3G/LTE".
- : when connecting to public Wi-Fi hotspot.

❷ Icon of traffic.

Show the icon when connect to network. When there is upload and download data the icon changes color. When disconnect from network, hide the icon.

❸ Time information

❹ Wi-Fi

- Wi-Fi turned on.
- Number of connected Wi-Fi devices.

⑤ Wi-Fi Mode

⑥ DFS

When HW-02G is during DFS checking progress, the DFS icon show and flashes. When HW-02G connect to the 5G_W52/W53 network that can be only used indoor only, show this icon. Otherwise hide the icon.

⑦ USB

Show it when connected to USB cable and HW-02G supports Charging with standard functions process. If connected to USB cable only for charging, hide this icon.

⑧ Battery

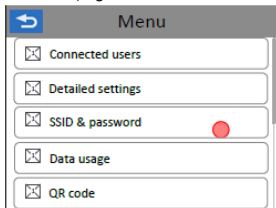
: Battery level from low to high.

SSID and Wireless Network Encryption Key

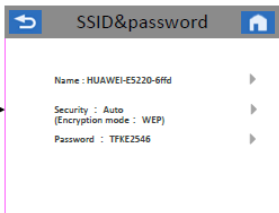
When a Wi-Fi device establishes a connection to the HW-02G for the first time, you may need to enter the default Service Set Identifier (SSID) and wireless network encryption key. These are printed on the HW-02G.

To view the current SSID and wireless network encryption key on the screen:

1. Press the **About > SSID&password** on the homepage.



2. The SSID and Password display on the screen.



Getting Started

Installing a SIM Card

Caution:

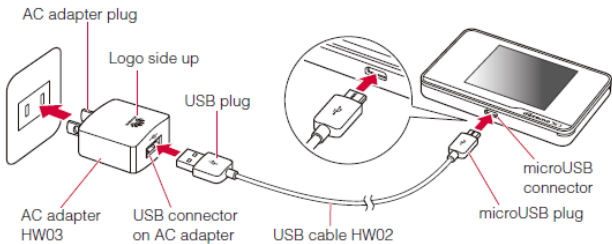
Use a standard miniUIM card compatible with the HW-02G, otherwise you will damage your HW-02G.

Charging the Battery

If the battery has not been used for an extended period of time, recharge it before use.

Note:


- Only use chargers compatible with the HW-02G and provided by a designated manufacturer. Use of an incompatible charger or one from an unknown manufacturer may cause the HW-02G to malfunction, fail, or could even cause a fire. Such use voids all warranties, whether expressed or implied, on the product.
- The HW-02G's charger model is HW-050100XYW. X and Y represent letters or numbers that vary by region. For details about the specific charger model, contact an authorized dealer.



Connecting to the Internet via Wi-Fi

The HW-02G's management parameters have been preset according to your operator's requirements. You can quickly connect to the Internet by following these steps:

Step 1: Turn on the HW-02G

Press and hold the  button until the screen lights up, indicating that the HW-02G is turned on.

Note:

Press and hold the  button to turn off the HW-02G.

Step 2. Establish a Wi-Fi connection (using a computer running the Windows XP operating system as an example)

1. Ensure that the HW-02G's Wi-Fi function is on.
2. Select **Start > Control Panel > Network Connections > Wireless Network Connection**.

Note:

Before establishing a Wi-Fi connection, ensure that the computer is equipped with a wireless network adapter. If the computer indicates a wireless network connection, the wireless network adapter can be used. Otherwise, verify that your wireless network adapter is working properly.

3. Click **View available wireless networks** to view a list of available wireless networks.
4. Select the wireless network connection with the HW-02G's SSID and click **Connect**.

Note:

- If the wireless network connection is encrypted, enter the correct wireless network encryption key.
 - Press the WPS button twice to view the current SSID and wireless network encryption key on the screen.
5. Wait a moment for the wireless network connection icon to appear in the system tray in the lower right corner of the computer screen. The wireless network connection is then established.

Step 3: Connect to the Internet

If data is transmitted, the HW-02G will automatically connect to the Internet. If data is not

transmitted for a period of time, the HW-02G will automatically disconnect from the network connection.

Logging In to the Web Management Page

1. Make sure the connection between the HW-02G and the Wi-Fi device or computer is working normally.
2. Open the browser, and enter **http://hw-02g.com** in the address box.
3. Enter the password to log in to the web management page.

Note:

The default password is **admin**.

Daily Use

Battery Saving Mode

If the HW-02G has been inactive for some time, the HW-02G enters the standby mode, in which the display screen turns off. Pressing any button causes the display screen to light up.

When the HW-02G is being powered only by the battery, you can choose to enable or disable the automatic Wi-Fi turnoff function. If this function is enabled and if no Wi-Fi devices access the HW-02G for a period of time, the Wi-Fi turns off automatically. You can press any button to turn the Wi-Fi on again.

Verifying the PIN

If the PIN verification function is enabled, log in to the web management page and enter the correct PIN according to the instructions. PIN/PUK codes are supplied by your operator along with the SIM card. For details, please consult your operator.

Restoring to Factory Settings

If you forget some configuration parameters, you can restore the HW-02G to its factory settings and then configure the HW-02G again.

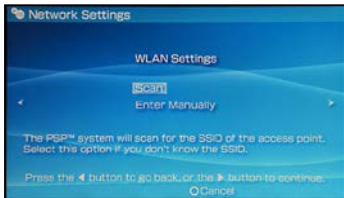
Press and hold the **RESET** button until the display screen turns off. The HW-02G is then restored to its factory settings.

Note:

After you carry out this operation, the HW-02G's personal configuration parameters will all be deleted. All configurations on the web management page will be restored to the factory settings.

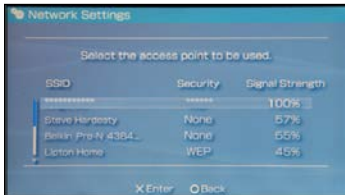
Example 1: Connecting to a Game Console (for example, PSP) through Wi-Fi

1. On the PSP, turn on the WLAN.
2. Choose **Settings** > **Network Settings**.
3. Select **Infrastructure Mode**.
4. Select **New Connection**, and enter the connection name.
5. Select **Scan** to search for wireless networks. A list of access points will be displayed on the screen.
6. Select the access point with the HW-02G's SSID, and press the **▶** button on the PSP. Confirm the SSID, and enter the correct wireless network encryption key.
7. Press the **▶** button to proceed to the next step, and then press the **X** button to



save settings.

8. Select **Test Connection** to test whether the network connection is successful.
9. You can now open the browser and access the network.



Example 2: Connecting to a Tablet Computer (for example, iPad) through Wi-Fi

1. Touch **Settings** > **WLAN** to turn on WLAN.
2. The tablet computer automatically searches for wireless connections and displays a list of access points.
3. Select the access point with the HW-02G's SSID.
4. If required, enter the correct wireless network encryption key, and tap **Join**.
(The lock icon indicates that the encryption key is required to connect to this wireless network.)

Note:

Wi-Fi devices, such as an iPhone, iPod touch, PS3 and NDSi, can all access the Internet through the HW-02G. For specific operations, refer to the Wi-Fi device's user manual.



Tips

When the HW-02G is in use for an extended period of time, it will become warm and may overheat. Should this happen, the HW-02G will automatically close the network connection and turn off to protect itself from damage. If this occurs, place the HW-02G in a well ventilated space to allow the heat to dissipate, then turn it on and continue to use it as normal.

If you are unable to use the HW-02G as normal, try the following:

- Consult the user manual on the web management page.
- Restart the HW-02G.
- Restore the HW-02G to the factory settings.
- Consult your operator.



is a trademark of ETSI.