



HUAWEI WATCH Kid

Quick Start



Quick Start

Dear children and parents:



Hi! I'm so glad to be part of your family.

I'm made from harmless materials, so you can wear me without having to worry. If you happen to experience discomfort when wearing me, please take me off and consult your doctor. From now on, I'll be your companion, by your side day and night.

HUAWEI WATCH Kid

Accessories

Below are some accessories that come with your HUAWEI WATCH Kid. Let's get to know them!



Charger



Screwdriver
(to attach or remove the
nano-SIM card cover)



Charging
cable

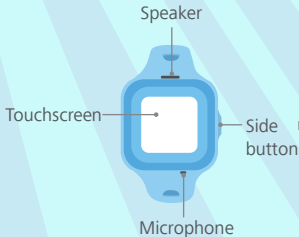


Spare screw
(to fasten the nano-SIM
card cover)



Pictures are for reference only and may vary in appearance from actual objects.

My introduction



Press and hold to:

- Power on
- Place SOS emergency calls (press and hold the button for 5s and then release the button when it vibrates)
- Restart (press and hold for 10s)

Touch to:

- Turn the screen on or off
- Return to the home screen
- Mute ringtones





Nano-SIM card slot

Infrared sensor

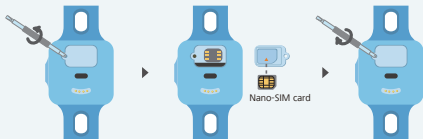
Senses whether or not your child is wearing the HUAWEI WATCH Kid. If it is taken off, you will be notified.


Charging port



Before use

Insert a nano-SIM card when your HUAWEI WATCH Kid is powered off.

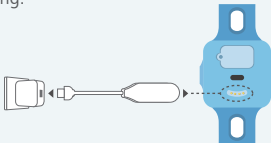


 If you insert a nano-SIM card when your HUAWEI WATCH Kid is on, press and hold the side button to restart.

To avoid damage, do not use sharp objects to touch the metal contacts in the card slot.

Charging

Line up the metal end of the charging cable head with the charging port and your HUAWEI WATCH Kid will automatically plug in and start charging.



Wipe the charging port dry before charging to avoid corrosion of metal contacts, short-circuiting, or other risks.

If you haven't used your HUAWEI WATCH Kid for a long time, its power will be completely used up and may not power on immediately the next time you charge it. Please charge your HUAWEI WATCH Kid until the touchscreen turns on, and then power it on.

Your companion

Downloading and installing the FiLIP app

Your HUAWEI WATCH Kid works with the FiLIP app to provide a better user experience for you and your child.

Scan the QR code to download and install the app.

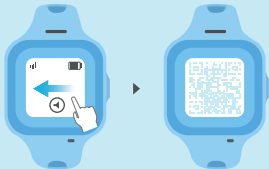


Pairing

Follow the steps on the app to pair your HUAWEI WATCH Kid with your phone.



Find the QR code



Using the HUAWEI WATCH Kid

Make a call

1. Touch **Contacts**.
2. Swipe up and down to find a contact.
3. Touch the contact's picture.



Answer a call



Change the time display format



Change the theme



SOS emergency call

To place an SOS emergency call, press and hold the side button for 5s and then release the button when it vibrates. ⓘ
Your HUAWEI WATCH Kid will then call the emergency contacts in order.



Waterproof

Your HUAWEI WATCH Kid can be used when you're washing your hands or in the rain. Remember to quickly wipe it dry if it gets wet.



To protect your HUAWEI WATCH Kid, do not use it when swimming, diving, scuba diving, or taking a shower.



Copyright © Huawei Technologies Co., Ltd.
2015. All rights reserved.



This document is for reference only.

Nothing in this guide constitutes a warranty of any kind, express or implied.





To find out how to use all the HUAWEI WATCH Kid functions, access **Support** in the app.



9672xxxx_01