

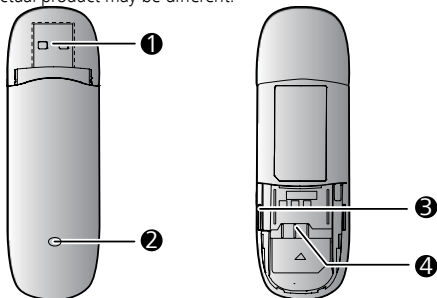
# Thank you for choosing K3805 HSPA USB Stick (hereinafter referred to as the K3805). With the K3805, you can access a wireless network at high speed.

## Note:

This manual describes the appearance of the K3805 as well as the procedures for preparation, installation, and removal. For operation details about the management program, see the online help included in the management program.

## Getting to Know Your K3805

The following figure shows the appearance of the K3805. It is provided only for your reference. The actual product may be different.



### ① USB Connector

It connects the K3805 to a PC.

### ② Indicator

It indicates the status of the K3805.

- Green, blinking twice every 3s: The K3805 is powered on.
- Green, blinking once every 3s: The K3805 is registered to the GSM/GPRS/EDGE network.
- Blue, blinking once every 3s: The K3805 is registered to the WCDMA/HSDPA/HSUPA network.
- Green, always on: The GPRS/EDGE connection is set up.
- Blue, always on: The WCDMA connection is set up.
- Cyan, always on: The HSDPA/HSUPA connection is set up.
- Off: The K3805 is removed from the PC.

### ③ MicroSD Card Slot

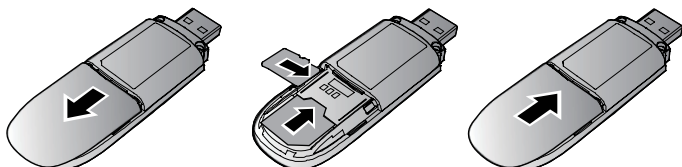
It holds a microSD card.

### ④ USIM/SIM Card Slot

It holds a Subscriber Identity Module (SIM)/ Universal Subscriber Identity Module (USIM) card.

## Getting Your K3805 Ready

1. Slide the back cover to remove it from the K3805.
2. Insert the USIM/SIM card and the microSD card into the corresponding card slots, as shown in the following figure.
3. Replace the back cover and slide it into place.



**Note:**

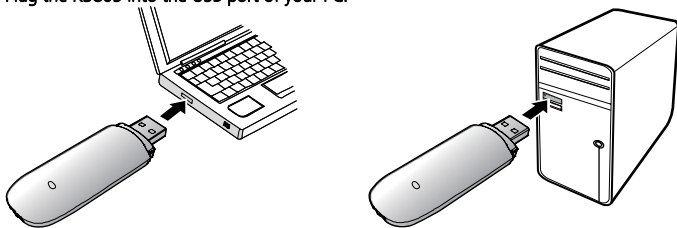
- The microSD card is an optional accessory. If it is not provided in the package, you can buy one yourself.
- Ensure that the beveled edge of the USIM/SIM card is properly aligned with that of the USIM/SIM card holder and the microSD card is inserted according to the direction as labeled on the microSD card slot.
- Do not remove the microSD or USIM/SIM card when the card is in use. Otherwise, the card as well as your K3805 may get damaged and the data stored on the card may be corrupted.

## Installation/Removal Guide

The procedure for installing the management program depends on the operating system (OS) installed on your PC. The following sections take Windows XP as an example.

### Connecting the K3805 to a PC

Plug the K3805 into the USB port of your PC.



### Installing the K3805 Management Program

1. Connect the K3805 with the PC.
2. The OS automatically detects and recognizes the new hardware and starts the installation wizard.

**Note:**


If the auto-run program does not respond, find the **AutoRun.exe** file in the driver path. Then double-click **AutoRun.exe** to run the program.

3. Follow the on-screen instructions of the installation wizard.
4. After the program is installed, a shortcut icon for the management program appears on the desktop.

### Starting the Management Program

After being installed, the management program starts automatically. Then every time the K3805 is connected to the PC, the management program starts automatically. You can also double-click the shortcut icon on the desktop to start the management program.

### Removing the K3805

1. Double-click  in the notification area. Then the **Unplug or Eject Hardware** dialog box appears.
2. Select the corresponding hardware and then click **Stop**.
3. When the message "**It is safe to remove the device**" appears, remove the K3805.

### Uninstalling the Management Program

1. Choose **Start > Control Panel > Add or Remove Programs**.
2. Find the management program and click **Remove** to uninstall the management program.

**Note:**

Exit the management program before uninstalling it.