

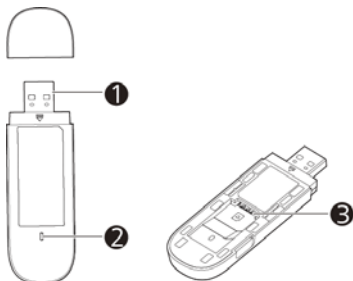
Thank you for choosing the Mobile Broadband USB Stick. With your USB Stick, you can access a wireless network at high speed.

Note:

This manual describes the appearance of the USB Stick, as well as the procedures for preparation, installation, and removal. For operation details about the management program, see the online help included in the management program.

Getting to Know Your USB Stick

The following figure shows the appearance of the USB Stick. It is provided only for your reference. The actual product may be different.



1 USB Connector

It connects the USB Stick to a PC.

2 Indicator

It indicates the status of the USB Stick.

- Green, blinking twice every 2s: The USB Stick is powered on.
- Green, blinking once every 2s: The USB Stick is registering with a 2G network.
- Blue, blinking once every 2s: The USB Stick is registering with a 3G/3G+ network.
- Green, solid: The USB Stick is connected to a 2G network.
- Blue, solid: The USB Stick is connected to a 3G network.
- Cyan, solid: The USB Stick is connected to a 3G+ network.
- Off: The USB Stick is removed.

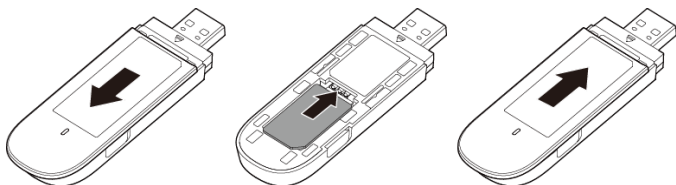
3 SIM/USIM Card Slot

It holds a Subscriber Identity Module (SIM)/Universal Subscriber Identity Module (USIM) card.

Getting Your USB Stick Ready

Install the SIM/USIM card

1. Slide the front cover to remove it from the USB Stick.
2. Insert the SIM/USIM card into the corresponding card slot, as shown in the following figure.
3. Replace the front cover and slide it into place.



Note:

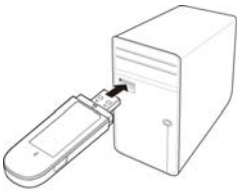
- Ensure that the beveled edge of the SIM/USIM card is properly aligned with that of the SIM/USIM card slot.
- Do not remove the SIM/USIM card when the card is in use. Otherwise, the card as well as your USB Stick may get damaged and the data stored on the card may be corrupted.

Installation/Removal Guide

The procedure for installing the management program depends on the operating system (OS) installed on your computer. The following sections take Windows 7 as an example.

Connecting the USB Stick to a computer

Plug the USB Stick into the USB port of your computer.



Installing the USB Stick Management Program

1. Connect the USB Stick with the computer.
2. The OS automatically detects and recognizes the new hardware and starts the installation wizard.

Note:

If the auto-run program does not respond, find the **AutoRun** application in the driver path. Then double-click **AutoRun** application to run the program.

3. Follow the on-screen instructions of the installation wizard.
4. After the program is installed, a shortcut icon for the management program appears on the desktop.

Starting the Management Program


After being installed, the management program starts automatically. Then every time the USB Stick is connected to the computer, the management program starts automatically.

You can also double-click the shortcut icon on the desktop to start the management program.

Note:

If your USB Stick supports Windows 8 (not including Windows RT), you can manage the USB Stick through its management program. If your USB Stick supports Windows 8 (including Windows RT), after you insert it into a computer running Windows 8, nothing will be installed, and you can only use the native Mobile Broadband Management Tool on the computer to set up a network connection.

Removing the USB Stick

1. Exit the management program before removing the USB Stick.
2. Click  in the notification area.
3. Select the corresponding hardware and then click it.
4. Remove the USB Stick after a while.

Uninstalling the Management Program

1. Choose **Start > Control Panel > Uninstall a program**.
2. Find the management program and double-click it to uninstall the management program.

Note:

Exit the management program before uninstalling it.