

IDEOS S7 Slim

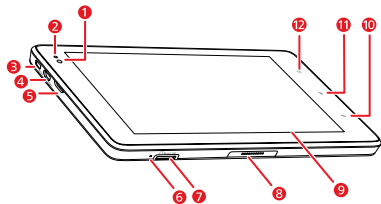
Quick Start

Contents

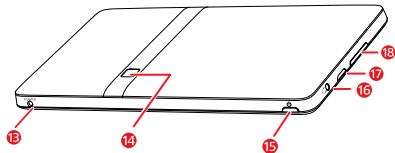
| | | |
|-----------|---|-----------|
| 1 | Getting to know your Tablet | 1 |
| 2 | Installation | 2 |
| 2.1 | To remove the back cover | 2 |
| 2.2 | To install the SIM card | 2 |
| 2.3 | To install the battery | 2 |
| 2.4 | To install the back cover | 3 |
| 3 | Turning the Tablet on or off | 3 |
| 3.1 | To turn the Tablet on | 3 |
| 3.2 | PIN protection | 4 |
| 3.3 | To turn the Tablet off | 4 |
| 4 | Charging the battery | 4 |
| 4.1 | Using the power adapter to charge the tablet | 4 |
| 4.2 | Charging Partner | 5 |
| 4.2.1 | Charging the Charging Partner | 5 |
| 4.2.2 | Using the Charging Partner to charge the tablet | 5 |
| 5 | Using the touchscreen | 6 |
| 6 | Locking and unlocking the screen | 7 |
| 6.1 | To lock the screen | 7 |
| 6.2 | To unlock the screen | 7 |
| 7 | Setting date and time | 7 |
| 8 | Installing or removing the microSD card | 8 |
| 9 | Connecting to or disconnecting from a computer via USB | 8 |
| 10 | Using the Hi Suite to Synchronize | 9 |
| 11 | Wireless networks | 10 |
| 11.1 | Wi-Fi | 10 |

| | | | | | |
|-------------|---|-----------|-----------|---------------------------------------|-----------|
| 11.1.1 | Opening Wi-Fi settings..... | 10 | 12.4 | Google Services..... | 14 |
| 11.1.2 | Turning Wi-Fi on or off..... | 10 | 12.4.1 | Creating a Google Account..... | 14 |
| 11.1.3 | Connecting to a Wi-Fi network | 10 | 12.4.2 | Using Market | 15 |
| 11.1.4 | Adding a Wi-Fi Network..... | 11 | 13 | For more help | 16 |
| 11.2 | Mobile networks..... | 11 | 14 | Warnings and Precautions | 16 |
| 11.2.1 | Opening Mobile network settings | 12 | | | |
| 11.2.2 | To create or edit an Access Point..... | 12 | | | |
| 11.3 | Sharing Your Tablet's Data Connection..... | 12 | | | |
| 11.3.1 | Sharing Your Tablet's Data Connection via USB | 12 | | | |
| 11.3.2 | Sharing Your Tablet's Data Connection as a Portable Wi-Fi Hotspot..... | 12 | | | |
| 12 | Application | 13 | | | |
| 12.1 | Browser | 13 | | | |
| 12.2 | Calls | 13 | | | |
| 12.3 | Messaging | 13 | | | |

1 Getting to know your Tablet



- 1 Front camera lens
- 2 Ambient light sensor
- 3 HDMI interface
- 4 Micro USB interface
- 5 Speaker
- 6 Microphone
- 7 microSD card slot
- 8 Dock interface
- 9 LCD screen
- 10 **Back key**
- 11 **Menu key**
- 12 **Home key**

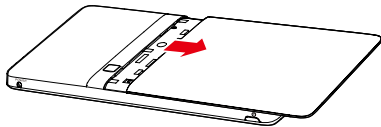


- 13 Power interface
- 14 Rear camera lens
- 15 **Power key**
- 16 Headset jack
- 17 Speaker
- 18 **Volume Up/Down key**

2 Installation

2.1 To remove the back cover

To remove the back cover, refer to the following figure.

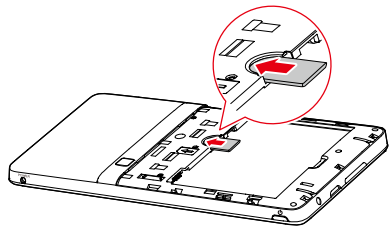


2.2 To install the SIM card



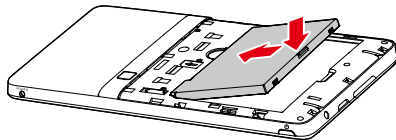
Before installing or removing the SIM card, power off the Tablet.

Insert your SIM card into the SIM card slot as shown in the following figure until the SIM card is completely in position.



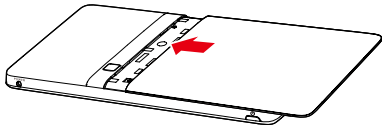
2.3 To install the battery

To install the battery, refer to the following figure.



2.4 To install the back cover

To install the back cover, refer to the following figure.

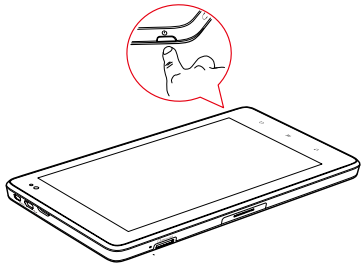


3 Turning the Tablet on or off

3.1 To turn the Tablet on


Before you turn the Tablet on, ensure that the SIM card has been correctly installed and that the battery is correctly installed or the Tablet has been properly connected to the power supply.

To turn the Tablet on, press and hold the **Power** key for about two seconds.



3.2 PIN protection

If your SIM card is preset with a PIN, the Tablet prompts you to enter the PIN.

 The PIN may have been provided by your service provider with your SIM card. If you lost it, consult your service provider.

3.3 To turn the Tablet off

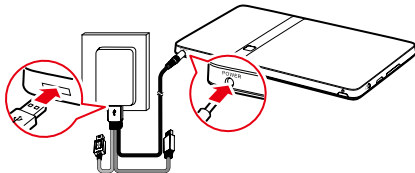
1. Press and hold **Power** key to open the **Tablet options** menu.
2. Touch **Shut Down**.
3. Touch **OK** to assure you want to turn your Tablet off in the dialog that opens.

4 Charging the battery

Before charging the battery, ensure that the battery is properly installed on your Tablet.

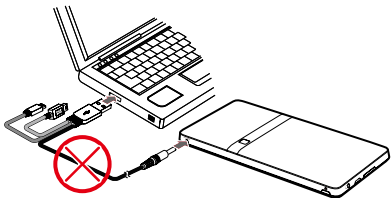
4.1 Using the power adapter to charge the tablet

To charge the battery, you can connect the Tablet to the power supply through the power adapter, as shown in the following figure.





Do not connect the Tablet to a PC to charge the Tablet, as shown in the following figure. Doing so may damage your Tablet and the PC.



4.2 Charging Partner

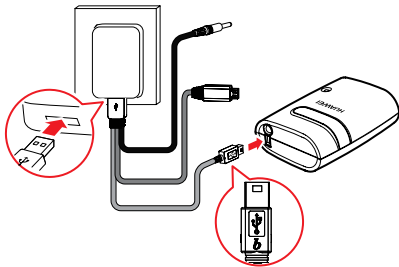
The Charging Partner is a portable storage battery that can be used to supply power to your Tablet.



The Charging Partner is optional. It may not be provided with your Tablet. If you want to buy a Charging Partner, select a correct model for your Tablet.

4.2.1 Charging the Charging Partner

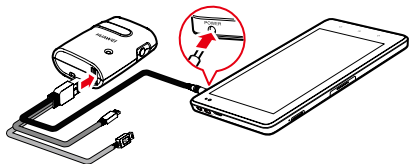
To charge the Charging Partner, use the power adapter to connect the Charging Partner to a power socket, as shown in the following figure.



4.2.2 Using the Charging Partner to charge the tablet

You can use the Charging Partner to charge your Tablet.

Connect the Charging Partner to the Tablet, as shown in the following figure.



5 Using the touchscreen

By using your finger, you can manipulate target items such as applications and controls, and enjoy the touchscreen at your fingertips. The Tablet supports the following actions.

| Action | Description |
|----------------|--|
| Touch | Simply touch items on the screen, such as applications and controls. For example, you can type letters and symbols using the onscreen keyboard. |
| Touch and hold | Touch and hold an item on the screen until an action occurs. For example, you can usually touch and hold the screen to open the context menu of the active item. |


| Action | Description |
|--------|--|
| Drag | Touch and hold an item, and then move your finger on the screen until you reach the target position. For example, you can drag a shortcut to the trash to delete it. |
| Flick | Flick your finger vertically or horizontally across the screen. For example, you can flick up and down to manipulate a scroll bar and flick left and right to switch between pictures. |

6 Locking and unlocking the screen

6.1 To lock the screen

When the Tablet is on, press the **Power** key to turn off and lock the screen.

When the Tablet remains idle for a time period that you have set, the screen will automatically lock.

 To save your battery or prevent accidental taps when not in use, or when you want to wipe smudges off your touchscreen, turn off and lock the screen.


6.2 To unlock the screen

When the screen is off, you can press the **Power** key to turn on it, and then unlock the screen through the following steps.

1. If you have not set up a screen unlock pattern, press the **Menu** key to unlock the screen, or follow the instructions displayed on the screen and flick upwards to unlock the screen.
2. If you have set up a screen unlock pattern, the Tablet prompts you to draw the pattern on the screen to unlock it.

7 Setting date and time

By default, the Tablet automatically uses the network provided date, time zone, and time.

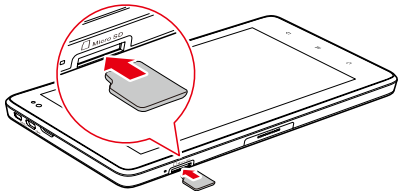
 When the time provided by the network is automatically used, you cannot set the date, time, and time zone by yourself.

To manually set date and time, do as the following steps.

1. Open the **Settings** list.
2. Touch **Date & time**.
3. Touch **Automatic** to make it unchecked.
4. Touch **Set date**. Then touch the plus button or the minus button to adjust the date, month, and year, or touch the text field of date, month, and year to enter them. Touch **Set** when finished.
5. Touch **Select time zone**, then select the time zone in the list. Scroll down the list to view more time zones.
6. Touch **Set time**. Then touch the plus button or minus button to adjust the hour and minute, or touch the text field of hour and minute to enter them. Touch **Set** when finished.

8 Installing or removing the microSD card

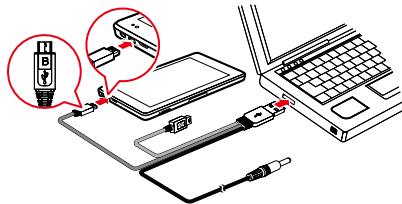
Insert your microSD card into the microSD card slot as shown in the following figure until the microSD card clicks into position.



⋮ To remove the microSD card, slightly push the card further into the slot, and wait for it to eject out for about 2 mm, and then remove it.

9 Connecting to or disconnecting from a computer via USB


To connect your Tablet to a computer via USB, do as follows.



1. Use the USB cable that came with your Tablet to connect the Tablet to a USB port on your computer. The Tablet displays a notification indicating that the USB is connected.
2. Touch the Event button to open the **Event Manager** and touch **USB connected** in the **Notifications** list.
3. Touch **Turn on USB storage** in the dialog that opens to confirm that you want to transfer music, pictures, and other files between your Tablet storage or microSD card storage and the computer.


To disconnect your Tablet from the computer, better to carefully follow the instructions of your computer to disconnect USB devices correctly, to avoid losing information. And do as follows.

1. Touch the Event button to open the **Event Manager**.
2. Touch **Turn off USB storage** in the **Notifications** list.
3. Touch **Turn off USB storage** in the dialog opens.

 When the Tablet is connected to your PC for the first time, an installation wizard will run automatically. Follow the wizard to install the driver. It takes only a few minutes to finish the installation. After the driver is successfully installed, it does not need to be installed again the next time you connect your Tablet to the PC. If the installation wizard does not run the first time you connect your Tablet to your PC, open **My Computer** and then the CD drive with Huawei logo. Run **Setup.exe** to launch the installation wizard.

10 Using the Hi Suite to Synchronize

Install the Hi Suite stored in your Tablet. Follow the instructions on your computer to complete the installation. You can now synchronize your contacts and calendar appointments between your PC and Tablet. For more details, please refer to the Hi Suite help.

 The PC Suite is designed to work on Windows XP SP2, Windows Vista, and Windows 7. It is recommended that you use one of these systems.

11 Wireless networks

Your Tablet can connect to a variety of wireless networks and devices, including Wi-Fi data networks, and Bluetooth devices such as headsets and mobile networks for voice and data transmission.



Using a wireless device or accessory while driving may cause distraction and may be illegal. Always obey the laws and drive safely.

11.1 Wi-Fi

Wi-Fi is a wireless networking technology that can provide wireless Internet access over distances of up to 300 feet (100 meters). The capability of your Wi-Fi connections depends on the Wi-Fi router and the surroundings it works. To use Wi-Fi on your Tablet, you need to access a wireless access point or "hotspot". You can simply connect to some open access points, and you have to configure your Tablet to connect to the access points that are hidden or with security protections such as authentication and encryption.

11.1.1 Opening Wi-Fi settings

You can turn Wi-Fi on or off, turn the open network notification on or off, connect to a Wi-Fi network and add Wi-Fi networks in Wi-Fi settings list. To open Wi-Fi settings list, do as follows.

1. Open the **Settings** list.
2. Touch **Wireless & networks**, and then touch **Wi-Fi settings**.



When you are viewing the **Wi-Fi settings** list, you can press the **Menu** key and touch **Advanced** in the menu that opens to see your IP settings or other Wi-Fi details.

11.1.2 Turning Wi-Fi on or off

To turn Wi-Fi on or off, you can open **Wi-Fi settings** and touch **Wi-Fi** to make it checked or unchecked.



To extend your battery life, turn Wi-Fi off when you are not using it.

11.1.3 Connecting to a Wi-Fi network

When you turn Wi-Fi on, the available Wi-Fi networks found within range are listed with the names and security scheme information, and secured networks are indicated with a lock icon. You can view the **Wi-Fi networks** list by opening **Wi-Fi settings**.

To connect to a Wi-Fi network, touch a network you want to connect to it in the **Wi-Fi networks** list on the **Wi-Fi settings** screen. If the

network is open, you are prompted to confirm that you want to connect to that network by touching **Connect**. If the network is secured, you are prompted to enter a password or other credentials. (Contact your service provider for details.)



When you are in range and Wi-Fi is on, you will automatically reconnect to available networks that you have connected to previously.



When you are connected to a network, you can touch its name in the **Wi-Fi networks** list for details about the speed, security, address, and related settings.

If "The network password you typed is not correct, please try again" or "unable to connect to the network" is displayed after you enter a password and connect the Tablet to a network, check whether the encryption method, password type, password, and certificate are correct.

When the encryption mode is set to WEP, if "Obtaining address..." is displayed after you enter a password and connect the Tablet to a network, check whether the password is correct. For a solution, Please touch the network, touch **Forget**, enter the correct WEP password and try again.

11.1.4 Adding a Wi-Fi Network

When a Wi-Fi network with any security credentials does not broadcast its name (SSID), or it is not in range, you can add and connect to it when Wi-Fi is on. You need to contact the service provider for details about the security scheme that is deployed on it and to obtain the password or other required security credentials. The name (SSID) and credentials are saved and you are automatically connected to this network if it is in range and Wi-Fi is on.

When Wi-Fi is on, do as the following steps to add a Wi-Fi Network.

1. In the **Wi-Fi settings** list, flick down and touch **Add Wi-Fi network**.
2. Enter the name (SSID) of the network in the **Network SSID** text field. If the network is secured, touch the **Security:** button and then touch to select the security scheme in the menu that opens.
3. Enter any required security credentials.
4. Touch **Save**.

11.2 Mobile networks

Your Tablet with a SIM card is configured to use the mobile networks of your wireless service provider for voice calls and for transmitting data.



If your Tablet does not connect to a network when you insert a SIM card and turn it on, contact your service provider to obtain the details of its access point.

11.2.1 Opening Mobile network settings

1. Open the **Settings** list.
2. Touch **Wireless & networks**, and then touch **Mobile networks**.

11.2.2 To create or edit an Access Point

If you and your wireless service provider determine that you need to change the settings of your current access point name (APN) or to create a new one, you must obtain the APN and detailed settings from your provider.

1. Open the **Mobile networks** settings screen, and touch **GSM/UMTS Options > Access Point Names**.
2. Touch an existing APN to edit it. Or press the **Menu** key and touch **New APN**. Enter the APN settings offered by your service provider by touching each setting that you need to edit.
3. When you are finished, press the **Menu** key and touch **Save**. If you created a new APN, touch it in the APNs screen to start using it.

11.3 Sharing Your Tablet's Data Connection

You can share your Tablet's data connection with a single computer via a USB cable: USB tethering. Or you can share your Tablet's data connection with devices at the same time, by turning your Tablet into a portable Wi-Fi hotspot.

11.3.1 Sharing Your Tablet's Data Connection via USB

To use USB tethering in different operating systems, you may need to prepare your computer to establish a network connection via USB.



You can not share your Tablet's data connection and access SD card via USB at the same time.

1. Use the USB cable that came with your Tablet to connect the Tablet to a USB port on your computer.
2. Open the **Settings** list.
3. Touch **Wireless & networks**, and then touch **Tethering & portable hotspot**.
4. Select the **USB tethering** check box to share your data connection.

11.3.2 Sharing Your Tablet's Data Connection as a Portable Wi-Fi Hotspot

1. Open the **Settings** list.

2. Touch **Wireless & networks**, and then touch **Tethering & portable hotspot**
3. Select the **Portable Wi-Fi hotspot** check box to share your data connection.



When **Portable Wi-Fi hotspot** is selected, you can touch **Portable Wi-Fi hotspot settings** to change its network name or secure it.

12 Application


12.1 Browser

Touch **Browser** on the Home screen or on the Applications screen to open the **Browser** and start surfing the web.



Your Tablet may not support Flash. If you want to browse Flash on some Web pages, please download Flash Player from **Market**. For detailed information about how to download Flash Player, refer to the section **Market**.


12.2 Calls

1. To display the phone panel, you can touch **Dialer** on the home screen or on the Applications screen.
2. Touch the digital keys to enter the phone number.
3. Touch the  key on the screen.

12.3 Messaging

1. On the **Messaging** screen, touch **New message**.


2. Enter the name of a contact with a mobile number in the **To** field. As you enter, matching contacts appear. You can touch a suggested contact or continue your entering.
3. Touch the composition text field to enter your message text. If you press the **Back** key while composing a message, it is saved as a draft in your **Messaging** window. Touch the message to resume composing it.
4. Touch **Send**.

 After you send a message, the following cases may occur: If "Currently unable to send your message..." is displayed, check whether a SIM card is installed properly. If an envelope icon with an exclamation mark is displayed in the lower right corner, it indicates that the message failed to be sent. Check the signal intensity of a network and whether your Tablet charge is overdue if a SIM card is installed properly.

12.4 Google Services

12.4.1 Creating a Google Account


When you turn on your mobile phone for the first time, touch a Google services such as **Market**, and you will be prompted to sign in to your Google account.

 When creating a Google account, ensure that your Tablet is connected to a network.

If you already have a Google account, touch **Sign in** and enter your username and password.

If you do not have a Google account, you can create one:

1. After reading the setup information, touch **Next**.
2. Touch **Create**.
3. Enter a first name, last name, and user name for your Google account, and then touch **Next**. The tablet will connect to the Google server to check whether the username is available. If the username you entered is already in use, you will be prompted to choose another one or select one from a list.
4. Enter and confirm your Google account password.
5. Select a security question from the drop down menu, and then enter the answer.
6. Touch **Create**.
7. When **Google Terms of Service** screen appears, touch **I agree, Next**.
8. Enter the characters that appear on the screen, and then touch **Next**.

 To use another account, go to the **Accounts & sync** settings

screen, and touch **Add account** to select which type of accounts you want to add.

12.4.2 Using Market

Android Market provides direct access to applications and games which you can download and install on your Tablet.

Searching for Applications

There are a few different ways to find applications on the Market screen, including:

1. Featured applications.
2. List of games.
3. Search function.
4. Your downloads.

Installing an Application

1. On the **Market** screen, touch **Apps**.
2. Touch a category, and then touch the item you want to download.
3. On the item details screen, read more about the application. Including its cost, overall rating, and user comments. If you scroll down to the **About the developer** section, you can see other applications from the same developer, link to the developer's website, or send the developer an email.

4. To install the item, touch **FREE** (if the item is free) or **Buy**, whichever is displayed.
5. To check the progress of a download, open the notification panel. Most applications are installed within seconds. To stop an item from downloading, touch **Cancel**.
6. After the application has been downloaded and installed on your tablet, the content download icon appears in the notification bar.



If you want to install a non-Market application, press the **Menu** key and touch **Settings > Applications**, and then select the **Unknown sources** to allow installation of the non-Market application.

Uninstalling an Application

1. On the Market screen, touch **Apps**.
2. Touch the application you want to uninstall, and then touch **Uninstall**.
3. When prompted, touch **OK** to remove the application from your mobile phone.
4. Choose the reason for removing the application, and then touch **OK**.

13 For more help

For more help, you can open **User Guide** on the Applications screen.

14 Warnings and Precautions

To use the device properly and safely, read these warnings and precautions carefully and strictly observe them during operation.

Unless otherwise specified, the term "device" refers to the device and its accessories.

Basic Requirements

- During storage, transportation, and operation of the device, keep it dry and prevent it from colliding with other objects.
- Do not dismantle the device. In case of any fault, contact an authorized service center for assistance or repair.
- Without authorization, no organization or individual can change the mechanical, safety, or performance design of the device.
- When using the device, observe all applicable laws and regulations and respect the legal rights of other people.

Environmental Requirements for Using the Device

- Before connecting and disconnecting cables, stop using the device, and then disconnect it from the power supply. Ensure that your hands are dry during operation.

- Keep the device far from sources of heat and fire, such as a heater or a candle.
- Keep the device far from electronic appliances that generate strong magnetic or electric fields, such as a microwave oven or a refrigerator.
- Place the device on a stable surface.
- Place the device in a cool and well-ventilated indoor area. Do not expose the device to direct sunlight.
- Keep the ambient temperature between 0°C and 35°C while the device is being charged. Keep the ambient temperature between 0°C to 40°C for using the device powered by a battery.
- Do not block the openings on the device with any object. Reserve a minimum space of 10 cm around the device for heat dissipation.
- Do not place any object (such as a candle or a water container) on the device. If any foreign object or liquid enters the device, stop using the device immediately, power it off, remove all the cables connected to it, and then contact an authorized service center.
- During thunderstorms, power off the device, and then remove all the cables connected to it to prevent it from getting damaged due to lightning strikes.

Precautions for Using Wireless Devices

- The device complies with the RF specifications when the device is used in portable exposure conditions or at a distance of 0.5 cm from your body.
- Do not use the device where using wireless devices is prohibited or may cause interference or danger.
- The radio waves generated by the device may interfere with the operation of electronic medical devices. If you are using any electrical medical device, contact its manufacturer for the restrictions on the use of the device.
- Do not take the device into operating rooms, intensive care units (ICUs), or coronary care units (CCUs).

Areas with Inflammables and Explosives

- Do not use the device where inflammables or explosives are stored, for example, in a gas station, oil depot, or chemical plant. Otherwise, explosions or fires may occur. In addition, follow the instructions indicated in text or symbols.
- Do not store or transport the device in the same box as inflammable liquids, gases, or explosives.

Accessory Requirements

- Use only the accessories supplied or authorized by the device manufacturer. Otherwise, the performance of the device may get affected, the warranty for the device or the laws and regulations

related to telecommunications terminals may become null and void, or an injury may occur.

- Do not use the power adapter if its cable is damaged. Otherwise, electric shocks or fires may occur.
- Ensure that the power adapter meets the specifications indicated on the device nameplate.
- Ensure that the power adapter meets the requirements of Clause 2.5 in IEC60950-1/EN60950-1 and it is tested and approved according to national or local standards.
- For pluggable device, the socket-outlet shall be installed near the device and shall be easily accessible.

Battery and Charger

- Unplug the charger from the electrical plug and the device when not in use.
- The battery can be charged and discharged hundreds of times before it eventually wears out. When the standby time and the talk time are shorter than the normal time, replace the battery.
- Use the AC power supply defined in the specifications of the charger. An improper power voltage may cause a fire or a malfunction of the charger.

- Do not connect two poles of the battery with conductors, such as metal materials, keys, or jewelries. Otherwise, the battery may be short-circuited and may cause injuries and burns on your body.
- Do not disassemble the battery or solder the battery poles. Otherwise, it may lead to electrolyte leakage, overheating, fire, or explosion.
- If battery electrolyte leaks out, ensure that the electrolyte does not touch your skin and eyes. When the electrolyte touches your skin or splashes into your eyes, wash your eyes with clean water immediately and consult a doctor.
- If there is a case of battery deformation, color change, or abnormal heating while you charge or store the battery, remove the battery immediately and stop using it. Otherwise, it may lead to battery leakage, overheating, explosion, or fire.
- If the power cable is damaged (for example, the cord is exposed or broken), or the plug loosens, stop using the cable at once. Otherwise, it may lead to an electric shock, a short circuit of the charger, or a fire.
- Do not dispose of batteries in fire as they may explode. Batteries may also explode if damaged.
- Danger of explosion if battery is incorrectly replaced. Recycle or dispose of used batteries according to the local regulations or reference instruction supplied with your device.

Prevention of Hearing Damage

Using a headset at high volume can damage your hearing. To reduce the risk of damage to hearing, lower the headset volume to a safe and comfortable level.

Safety of Children

Keep the device and its accessories out of the reach of children. Otherwise, they may damage the device and its accessories by mistake, or they may swallow the small components of the device, causing suffocation or other dangerous situations.

Maintenance

- If the device is not used for a long time, power it off, and then remove all the cables connected to it.
- If any exception occurs, for example, if the device emits any smoke or unusual sound or smell, stop using the device immediately, power it off, remove all the cables connected to it, and then contact an authorized service center.
- If the device screen is broken by colliding with hard objects, do not touch or try to remove the broken part. In this case, stop using the device immediately, and then contact an authorized service center in time.
- Do not trample, pull, or overbend any cable. Otherwise, the cable may get damaged, causing malfunction of the device.

- Before cleaning the device, stop using it, power it off, and then remove all the cables connected to it.
- Use a clean, soft, and dry cloth to clean the device shell. Do not use any cleaning agent or spray to clean the device shell.

Emergency Call

You can use your device for emergency calls in the service area. The connection, however, cannot be guaranteed in all conditions. You should not rely solely on the device for essential communications.

Certification Information (SAR)

This device meets guidelines for exposure to radio waves.

Your device is a low-power radio transmitter and receiver. As recommended by international guidelines, the device is designed not to exceed the limits for exposure to radio waves. These guidelines were developed by the independent scientific organization International Commission on Non-Ionizing Radiation Protection (ICNIRP) and include safety measures designed to ensure safety for all users, regardless of age and health.

The Specific Absorption Rate (SAR) is the unit of measurement for the amount of radio frequency energy absorbed by the body when using a device. The SAR value is determined at the highest certified power level in laboratory conditions, but the actual SAR level of the device when being operated can be well below the value. This is

because the device is designed to use the minimum power required to reach the network.

The SAR limit adopted by USA and Canada is 1.6 watts/kilogram (W/kg) averaged over one gram of tissue. The highest SAR value reported to the FCC and IC for this device type when tested for use in portable exposure conditions is 1.15 W/kg.

Federal Communications Commission (FCC) Statement

This device complies with part 15 of the FCC Rules. Operation is subject to the following two conditions: (1) This device may not cause harmful interference, and (2) this device must accept any interference received, including interference that may cause undesired operation.

- Reorient or relocate the receiving antenna.
- Increase the separation between the equipment and receiver.
- Connect the equipment into an outlet on a circuit different from that to which the receiver is connected.
- Consult the dealer or an experienced radio/TV technician for help.

Warning: Changes or modifications made to this device not expressly approved by Huawei Technologies Co., Ltd. may void the FCC authorization to operate this device.

Copyright © Huawei Technologies Co., Ltd. 2011. All rights reserved.

No part of this document may be reproduced or transmitted in any form or by any means without prior written consent of Huawei Technologies Co., Ltd.

The product described in this manual may include copyrighted software of Huawei Technologies Co., Ltd and possible licensors. Customers shall not in any manner reproduce, distribute, modify, decompile, disassemble, decrypt, extract, reverse engineer, lease, assign, or sublicense the said software, unless such restrictions are prohibited by applicable laws or such actions are approved by respective copyright holders under licenses.

Trademarks and Permissions



HUAWEI, HUAWEI, and  are trademarks or registered trademarks of Huawei Technologies Co., Ltd.

Other trademarks, product, service and company names mentioned are the property of their respective owners.

Notice

Some features of the product and its accessories described herein rely on the software installed, capacities and settings of local network, and may not be activated or may be limited by local network operators or network service providers. Thus the descriptions herein may not exactly match the product or its accessories you purchase.

Huawei Technologies Co., Ltd reserves the right to change or modify any information or specifications contained in this manual without prior notice or obligation.

NO WARRANTY

THE CONTENTS OF THIS MANUAL ARE PROVIDED “AS IS”. EXCEPT AS REQUIRED BY APPLICABLE LAWS, NO WARRANTIES OF ANY KIND, EITHER EXPRESS OR IMPLIED, INCLUDING BUT NOT LIMITED TO, THE IMPLIED WARRANTIES OF MERCHANTABILITY AND FITNESS FOR A PARTICULAR PURPOSE, ARE MADE IN RELATION TO THE ACCURACY, RELIABILITY OR CONTENTS OF THIS MANUAL.

TO THE MAXIMUM EXTENT PERMITTED BY APPLICABLE LAW, IN NO CASE SHALL HUAWEI TECHNOLOGIES CO., LTD BE LIABLE FOR ANY SPECIAL, INCIDENTAL, INDIRECT, OR CONSEQUENTIAL DAMAGES, OR LOST PROFITS, BUSINESS, REVENUE, DATA, GOODWILL OR ANTICIPATED SAVINGS.

Import and Export Regulations

Customers shall comply with all applicable export or import laws and regulations and will obtain all necessary governmental permits and licenses in order to export, re-export or import the product mentioned in this manual including the software and technical data therein.

Issue: 01 (2011–03–14)

Part Number: 902XXX



for Android™ Android is a trademark of Google Inc. Use of this trademark is subject to Google Permissions.