

-
- 3 Touch to enable or disable an alarm.
-

Adding a n Alarm

1. On the alarm list screen, touch **MENU**, and then touch **Add alarm**.
2. Set the alarm, and then touch **Done**.

Setting a n Alarm

1. On the alarm list screen, touch one of the alarms on the screen.
2. Touch **Time** to set the time of the alarm.
3. Touch **Ringtone** to select a ringtone for the alarm.
4. Select the **Vibrate** check box to have the phone vibrate, in addition to playing the ringtone.
5. Touch **Repeat** to set the days when you want the alarm to sound.
6. Touch **Label** to enter a name for the alarm.
7. Touch **Done**.

Customizing Alarm Settings

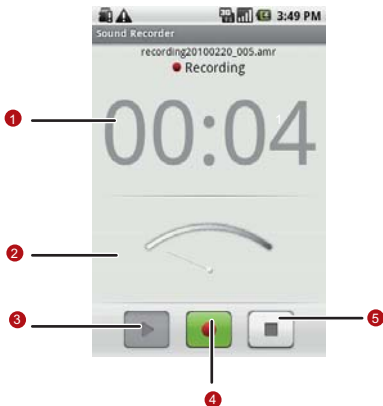
On the alarm list screen, touch , and then touch **Settings**.

- **Alarm in silent mode:** Select to sound alarms even when the phone is in silent mode.
- **Alarm volume:** Touch to open a dialog where you can set the volume of all alarms.
- **Snooze duration:** Touch to open a dialog where you can set how long the alarm waits before it sounds again.
- **Side button behavior:** Touch to open a dialog where you can set what happens if you press the Volume keys when an alarm sounds.

Using Sound Recorder

Sound Recorder is useful for quickly recording thoughts. You can also record your voice and set it as a ringtone.

Sound Recorder Screen





- | | |
|---|--|
| 1 | Shows the recording duration. |
| 2 | Shows the volume of your audio files. |
| 3 | Touch to pause or play back the recording. |



4 Touch to start recording.

5 Touch to stop recording.

Starting a Recording

1. Touch  > **Sound Recorder** to open the application.
2. Touch the start button to start recording.
3. Record your desired message.
4. Touch the stop button to stop recording.
5. Touch , and then touch **Recordings** to view the voice clip.

Setting a Voice Clip as a Ringtone

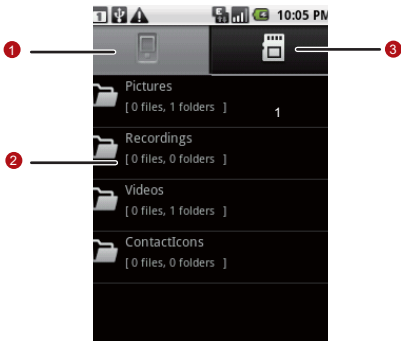
1. On the sound recorder screen, touch , and then touch **Recordings**.
2. Select the location where you have saved the recordings.
3. Select a voice clip, and then touch .
4. Touch **Set as ringtone**.

Using the File Manager

File manager is like having a pocket-sized personal assistant (PA), letting you organize, edit, and delete files and folders.

Opening the File Manager

Touch  > **File Manager** to open the application.



1	Touch to show the files and folders in your mobile phone memory.
2	Touch to show your list of files and folders.
3	Touch to show the files and folders on the microSD card.

Tip: The options menu of the file manager may not be completely shown on one page. You may need to flick the menu upward or downward, or press the Navigation key to browse all options.

Creating a Folder

1. On the **File Manager** screen, access the directory of the folder you want to create.
2. Touch **MENU** to open the options panel, and then touch **New folder**.
3. Enter the name of the new folder in the text box.
4. Touch **Save**.

Moving or Copying a File

1. On the **File Manager** screen, touch **MENU** to show the options panel, and then touch **Cut** or **Copy**.
2. Touch the file or folder you want to move or copy.
When selected, a check mark will appear.

Tip: To select all files, touch **MENU** to open the options panel. Then touch **Select All** to select all files in a folder (touch **Unselect All** to cancel the selection).

3. Touch **MENU** to open the options panel, and then touch **Done** to cut or copy the file.
4. Now select the path to where you want the file to be copied or moved. Touch **MENU** to open the options panel, and then touch **Paste** to move or copy the file to the selected path.

Doing a Quick Search for a File

1. On the **File Manager** screen, touch a folder to access the directory where the file you want is located.

2. Touch **MENU** to open the options panel, and then touch **Search**.
3. Write a key word of the name of your file or folder in the search box.
4. Touch **Search**. Your mobile phone will start the search.
5. A list of search results will be displayed. Touch a file in the list to open it.
6. Touch **New search** for a new search or press the Backkey to return to the file manager screen.

Viewing Your Memory Status

On the **File Manager** screen, touch **MENU** to open the options panel, and then touch **Memory Status**. The memory management screen will be displayed. This screen allows you to view the memory status and available memory on your mobile phone and microSD card.

Using the Calculator

Use the calculator to solve simple arithmetic problems or use its advanced operators to solve more complex equations.

Opening the Calculator




Touch  > **Calculator** to open the application.

Switching to the Advanced Panel

On the **Calculator** screen, flick the screen to the right or left to switch between **Advanced panel** and **Basic panel**.

Using the Notepad

Notepad features a simple text processor and lists all notes in a linear structure. You can add, edit, and delete notes.

1. Touch  > **Notepad** to open the application.
2. Press , and then touch **Add note** to create a note.
3. After editing, press , and then touch **Save**.

Managing Your Mobile Phone

To configure your mobile phone, touch  > **Settings**.

Setting the Date and Time

By default, your mobile phone automatically uses the date, time zone, and time provided by the network.

Note: When the time provided by the network is automatically used, you cannot set the date, time, and time zone.

1. On the **Settings** screen, touch **Date & time**.
2. Clear the **Automatic** check box.
3. Touch **Set date**. On the set date screen, touch the up button or the down button to adjust the date, month, and year, and then touch **Set** when the configuration is complete.
4. Touch **Select time zone**, and then select the desired time zone from the list. Scroll down the list to view more time zones.

5. Touch **Set time**. On the set time screen, touch the up button or down button to adjust the hour and minute. Touch **Set** when the configuration is complete.

Tip: If a 12-hour format is used, you can touch **AM** to change to **PM** or vice versa.

6. Select or clear the **Use 24-hour format** check box to toggle between using a 24-hour or 12-hour format.
7. Touch **Select date format** to select how you want the date to display on your mobile phone.

Setting the Display

Adjusting the Screen Brightness

1. On the **Settings** screen, touch **Sound & display** > **Brightness**.
2. Drag the slider left to make the screen darker, or right to make it brighter.
3. Touch **OK** to save the adjustment.

Adjusting the Time Before the Screen Turns Off

If your mobile phone is idle for several minutes, it will turn off the screen to save battery power. To set a longer or shorter idle time do the following:

1. On the **Settings** screen, touch **Sound & display > Screen timeout**.
2. Select the time you want the screen to be illuminated.

Calibrating the screen

Calibrate the screen if it does not respond accurately to touch.

1. On the **Settings** screen, touch **Sound & display > Calibration**.
2. Touch the target on the screen.
3. After the calibration process, press the **Send** key to quit.

Setting Ringers

Turning On Silent Mode

1. On the **Settings** screen, touch **Sound & display**.

2. Select the **Silent mode** check box. Then all sounds except media and alarms are silenced.

Adjusting the Ringer Volume

You can adjust the ringer volume when you are on the Home screen or any application screens (except during a call or when playing music or videos). Press the Volume keys to adjust the ringer volume to the desired level.

You can also adjust the ringer volume on the settings screen.

1. On the **Settings** screen, touch **Sound & display > Ringer volume**.
2. Drag the slider left to make the volume softer, or right to make it louder.
3. Touch **OK** to save the adjustment.

Tip: On the **Ringer volume** screen, if you do not select **Use incoming call volume for notifications**, you can set **Incoming call volume** and **Notification volume** separately.

Adjusting the Media Volume

When playing music or watching videos, press the Volume keys to adjust the sound.

You can also adjust the sound on the settings screen.

1. On the **Settings** screen, touch **Sound & display > Media volume**.
2. Drag the slider left to make the volume softer, or right to make it louder.
3. Touch **OK** to save the adjustment.

Changing the Phone Ringtone

1. On the **Settings** screen, touch **Sound & display > Phone ringtone**.
2. Touch the ringtone you want to use, and then touch **OK**. The ringtone plays when selected.

Tip: You can set a song as the ringtone. Open the Music application, and then press and hold the song name, and select **Use as phone ringtone**.

Setting Your Phone to Vibrate for Incoming Calls

1. On the **Settings** screen, touch **Sound & display**.
2. Select the **Phone vibrate** check box. Then mobile phone will vibrate when there is an incoming call.

Setting Phone Services

Customizing Call Settings

That is just a fancy term for all the stuff like call forwarding, call waiting, fixed dialing numbers and voicemail. Talk to your operator to learn about the different services you can get.

On the **Settings** screen, touch **Call settings** to customize your call function.

Turning on Data Roaming

1. On the **Settings** screen, touch **Wireless & networks > Mobile networks**.
2. Select the **Data roaming** check box.

Note: Accessing data services while roaming may incur additional charges. Ask your wireless service provider about data roaming fees.

Switching off the Data Service

Things like synchronizing updates and receiving multimedia messages rely on a transfer of data, which is what the data service does.

1. On the **Settings** screen, touch **Wireless & networks > Mobile networks**.
2. Clear the **Data service** check box.

Note: When Data service is set to off, you cannot receive or send multimedia messages.

Switching on Always-on Mobile Data

If you have not selected **Enable always-on mobile**, after your screen is locked for 30 minutes, your mobile phone will automatically stop all data services (except MMS). For example, your mobile phone will not check new emails or synchronize

data in the background. The mobile phone will automatically enable data services only after you have waken up your screen.

On the **Settings** screen, touch **Wireless & networks > Mobile network**. Select **Enable always-on mobile** to enable this function. By default, this function is disabled.

Setting Text-to-Speech

Use the Text-to-Speech settings to configure the Android text-to-speech synthesizer, for applications that can take advantage of it.

Installing Voice Data

1. On the **Settings** screen, touch **Text-to-speech > Install voice data**.
2. If your mobile phone does not have speech synthesizer data installed, connect to Android Market and let it guide you through the process of downloading and installing the data.
3. Follow the instructions to install the voice data.

Adjusting the Speech Rate

1. On the **Settings** screen, touch **Text-to-speech > Speech rate**.
2. Select a speed at which the text is to be spoken.

Protecting Your Mobile Phone

Turning on Your SIM Card PIN

1. On the **Settings** screen, touch **Location & security > Set up SIM card lock**.
2. Select the **Lock SIM card** check box.
3. Use the keyboard to enter the SIM card PIN, and then touch **OK**.
4. To change the SIM card PIN at any time, touch **Change SIM PIN**.

Note: You can dial emergency numbers any time from your mobile phone.

Protecting Your Mobile Phone with a Screen Lock

To keep your data more secure, lock the screen and/or require a screen unlock pattern every time your mobile phone is turned on or wakes up from sleep mode.

1. On the **Settings** screen, touch **Location & security > Set unlock pattern**.
2. Connect at least four dots in a vertical, horizontal and/or diagonal direction, and then lift your finger from the screen when complete.

Tip: You must flick your finger on the screen to create the pattern and not touch individual dots.

3. Your mobile phone will record the pattern. Touch **Continue**.
4. When prompted, draw the screen unlock pattern again, and then touch **Confirm**.

Note: Clear the **Use visible pattern** check box if you do not want the unlock pattern to be displayed on the screen when you unlock it.

Tip: To change your unlock screen pattern, touch **Location & security > Change unlock pattern** on the **Settings** screen.

Managing Applications

Viewing an Installed Application

1. On the **Settings** screen, touch **Applications > Manage applications**.
2. In the applications list, do any of the following:
 - Touch **MENU**, and then touch **Sort by size**. Then touch an application to view its details.
 - Touch **MENU**, and then touch **Filter**. Select **All**, **Running**, or **Downloaded** from the options menu. Then touch an application to view its details.
 - Touch an application to view its details directly.

Removing an Installed Application

1. On the **Settings** screen, touch **Applications > Manage applications**.
2. Touch an application, and then touch **Uninstall** to remove the application from your mobile phone.

Ways to Free Up Your Mobile Phone Memory

- Move files and email attachments to the microSD card.
- In **Browser**, clear all temporary Internet files and Browser history information.
- Uninstall the downloaded programs that you no longer use.
- Reset your mobile phone.

Resetting Your Mobile Phone

Backing Up My Settings

You can back up your mobile phone's settings to Google servers, with your Google account. If you replace your mobile phone, the settings you have backed up are stored on the new mobile phone the first time you sign in with your Google account.

1. On the **Settings** screen, touch **Privacy**.
2. Select the **Back up my settings** check box. A wide variety of settings are backed up, including your Wi-Fi passwords, bookmarks, a list of the applications you have installed, the words you have in the dictionary that the onscreen keyboard

uses, and most of the settings that you configured with the **Settings** application.

Restoring Factory Data

If you reset your phone to the settings that were configured at the factory, all of your personal data from internal phone storage, including information about your Google Account, any other accounts, your system and application settings, and any downloaded applications will be erased. Resetting the phone does not erase any system software updates you've downloaded or any files on your microSD card, such as music or photos.

1. On the **Settings** screen, touch **Privacy > Factory data reset**.
2. When prompted, touch **Reset phone**, and then touch **Erase everything**. The mobile phone resets the settings to the original factory settings, and then restarts.

Upgrading the Software Version

Before upgrading the software on your mobile phone, ensure that your mobile phone is fully charged and the upgrade version is correct. Back up important information such as the contacts,

email messages, files, and other messages saved to your mobile phone.

Downloading the Upgrade Package

You can download the software upgrade files from the following websites:

-

Preparing for the Upgrade

1. Download the upgrade file from the appropriate websites.
2. The file you download will be compressed. Use the unzip software on your PC to decompress the upgrade package. The upgrade package has a folder structure — be careful you do not change it. This folder is called **dlload** — do not rename it, either.
3. Use the USB cable to connect your mobile phone to your PC.
4. Copy the folder structure to the main directory (root directory) of your microSD card.

5. After you have copied the file to the microSD card, disable the USB mass storage feature.

Upgrading the Software through the microSD Card

After copying the update files to the microSD card, do the following:

1. On the **Settings** screen, touch **SD card & phone storage > Software Upgrade > SD card Upgrade**.
2. Before the upgrade, the system of your mobile phone automatically checks the battery level and the upgrade version. If the version you have downloaded does not meet the upgrade requirements, the upgrade will not work.
3. During the upgrade, your system may prompt you to back up your data in advance.
4. When the next message appears, touch **Confirm**.
5. Touch **Upgrade**.
6. Your mobile phone restarts and the upgrade screen is displayed.

7. After the upgrade is complete, your mobile phone automatically restarts and will switch on again.
8. Touch **About phone** > **Build number** on the **Settings** screen to view the version information.

Appendix

Warnings and Precautions

This section contains important information pertaining to the operating instructions of your device. It also contains information about how to use the device safely. Read this information carefully before using your device.

Electronic Device

Power off your device if using the device is prohibited. Do not use the device when using the device causes danger or interference with electronic devices.

Medical Device

- Follow rules and regulations set forth by hospitals and health care facilities. Do not use your device when using the device is prohibited.
- Pacemaker manufacturers recommend that a minimum distance of 15 cm be maintained between a device and a pacemaker to prevent potential interference with the pacemaker. If you are using a pacemaker, use the device on

the opposite side of the pacemaker and do not carry the device in your front pocket.

Potentially Explosive Atmosphere

Power off your device in any area with a potentially explosive atmosphere, and comply with all signs and instructions. Areas that may have potentially explosive atmospheres include the areas where you would normally be advised to turn off your vehicle engine. Triggering of sparks in such areas could cause an explosion or a fire, resulting in bodily injuries or even deaths. Do not power on your device at refueling points such as service stations. Comply with restrictions on the use of radio equipment in fuel depots, storage, and distribution areas, and chemical plants. In addition, adhere to restrictions in areas where blasting operations are in progress. Before using the device, watch out for areas that have potentially explosive atmospheres that are often, but not always, clearly marked. Such locations include areas below the deck on boats, chemical transfer or storage facilities, and areas where the air contains chemicals or particles such as grain, dust, or metal powders. Ask the manufacturers of vehicles using liquefied petroleum gas (such as propane or butane) whether this device can be safely used in their vicinity.

Traffic Security

Observe local laws and regulations while using the device. In addition, if using the device while driving a vehicle, comply with the following guidelines:

- Concentrate on driving. Your first responsibility is to drive safely.
- Do not talk on the device while driving. Use hands-free accessories.
- When you have to make or answer a call, park the vehicle at the road side before using your device.
- RF signals may affect electronic systems of motor vehicles. For more information, consult the vehicle manufacturer.
- In a motor vehicle, do not place the device over the air bag or in the air bag deployment area. Otherwise, the device may hurt you owing to the strong force when the air bag inflates.
- Do not use your device while flying in an aircraft. Power off your device before boarding an aircraft. Using wireless devices in an aircraft may cause danger to the operation of the aircraft and disrupt the wireless telephone network. It may also be considered illegal.

Operating Environment

- Do not use or charge the device in dusty, damp, and dirty places or places with magnetic fields. Otherwise, it may result in a malfunction of the circuit.
- The device complies with the RF specifications when the device is used near your ear or at a distance of 1.5 cm from your body. Ensure that the device accessories such as a device case and a device holster are not composed of metal components. Keep your device 1.5 cm away from your body to meet the requirement earlier mentioned.
- On a stormy day with thunder, do not use your device when it is being charged, to prevent any danger caused by lightning.
- When you are on a call, do not touch the antenna. Touching the antenna affects the call quality and results in an increase in power consumption. As a result, the talk time and the standby time are reduced.
- While using the device, observe the local laws and regulations, and respect others' privacy and legal rights.
- Keep the ambient temperature between -10°C and 45°C while the device is being charged. Keep the ambient temperature between -10°C to 55°C for using the device powered by a battery.

Prevention of Hearing Damage

Using a headset at high volume can damage your hearing. To reduce the risk of damage to hearing, lower the headset volume to a safe and comfortable level.

Safety of Children

Comply with all precautions with regard to children's safety. Letting the child play with your device or its accessories, which may include parts that can be detached from the device, may be dangerous, as it may present a choking hazard. Ensure that small children are kept away from the device and accessories.

Accessories

Use the accessories delivered only by the manufacturer. Using accessories of other manufacturers or vendors with this device model may invalidate any approval or warranty applicable to the device, result in the non-operation of the device, and cause danger.

Battery and Charger

- Unplug the charger from the electrical plug and the device when not in use.
- The battery can be charged and discharged hundreds of times before it eventually wears out. When the standby time and the talk time are shorter than the normal time, replace the battery.
- Use the AC power supply defined in the specifications of the charger. An improper power voltage may cause a fire or a malfunction of the charger.
- Do not connect two poles of the battery with conductors, such as metal materials, keys, or jewelries. Otherwise, the battery may be short-circuited and may cause injuries and burns on your body.
- Do not disassemble the battery or solder the battery poles. Otherwise, it may lead to electrolyte leakage, overheating, fire, or explosion.
- If battery electrolyte leaks out, ensure that the electrolyte does not touch your skin and eyes. When the electrolyte touches your skin or splashes into your eyes, wash your eyes with clean water immediately and consult a doctor.
- If there is a case of battery deformation, color change, or abnormal heating while you charge or store the battery,

remove the battery immediately and stop using it. Otherwise, it may lead to battery leakage, overheating, explosion, or fire.

- If the power cable is damaged (for example, the cord is exposed or broken), or the plug loosens, stop using the cable at once. Otherwise, it may lead to an electric shock, a short circuit of the charger, or a fire.
- Do not dispose of batteries in fire as they may explode. Batteries may also explode if damaged.

Cleaning and Maintenance

- The device, battery, and charger are not water-resistant. Keep them dry. Protect the device, battery, and charger from water or vapor. Do not touch the device or the charger with a wet hand. Otherwise, it may lead to a short circuit, a malfunction of the device, and an electric shock to the user.
- Do not place your device, battery, and charger in places where they can get damaged because of collision. Otherwise, it may lead to battery leakage, device malfunction, overheating, fire, or explosion.
- Do not place magnetic storage media such as magnetic cards and floppy disks near the device. Radiation from the device may erase the information stored on them.

- Do not leave your device, battery, and charger in a place with an extreme high or low temperature. Otherwise, they may not function properly and may lead to a fire or an explosion. When the temperature is lower than 0°C, performance of the battery is affected.
- Do not place sharp metal objects such as pins near the earpiece. The earpiece may attract these objects and hurt you when you are using the device.
- Before you clean or maintain the device, power off the device and disconnect it from the charger.
- Do not use any chemical detergent, powder, or other chemical agents (such as alcohol and benzene) to clean the device and the charger. Otherwise, parts of the device may be damaged or a fire can be caused. You can clean the device and the charger with a piece of damp and soft antistatic cloth.
- Do not dismantle the device or accessories. Otherwise, the warranty on the device and accessories is invalid and the manufacturer is not liable to pay for the damage.

Emergency Call

You can use your device for emergency calls in the service area. The connection, however, cannot be guaranteed in all

conditions. You should not rely solely on the device for essential communications.

Certification Information (SAR)

This device meets guidelines for exposure to radio waves.

Your device is a low-power radio transmitter and receiver. As recommended by international guidelines, the device is designed not to exceed the limits for exposure to radio waves. These guidelines were developed by the independent scientific organization International Commission on Non-Ionizing Radiation Protection (ICNIRP) and include safety measures designed to ensure safety for all users, regardless of age and health.

The Specific Absorption Rate (SAR) is the unit of measurement for the amount of radio frequency energy absorbed by the body when using a device. The SAR value is determined at the highest certified power level in laboratory conditions, but the actual SAR level of the device when being operated can be well below the value. This is because the device is designed to use the minimum power required to reach the network.

The SAR limit adopted by USA and Canada is 1.6 watts/kilogram (W/kg) averaged over one gram of tissue. The highest SAR value reported to the FCC and IC for this device type when tested for use at the ear is 0.763 W/kg, and when properly worn on the body is 0.864 W/kg.

The SAR limit also adopted by Europe is 2.0 W/kg averaged over 10 grams of tissue. The highest SAR value for this device type when tested at the ear is 0.726 W/kg.

FCC Statement

This equipment has been tested and found to comply with the limits for a Class B digital device, pursuant to Part 15 of the FCC Rules. These limits are designed to provide reasonable protection against harmful interference in a residential installation. This equipment generates, uses and can radiate radio frequency energy and, if not installed and used in accordance with the instructions, may cause harmful interference to radio communications. However, there is no guarantee that interference will not occur in a particular installation. If this equipment does cause harmful interference to

radio or television reception, which can be determined by turning the equipment off and on, the user is encouraged to try to correct the interference by one or more of the following measures:

- Reorient or relocate the receiving antenna.
- Increase the separation between the equipment and receiver.
- Connect the equipment into an outlet on a circuit different from that to which the receiver is connected.
- Consult the dealer or an experienced radio/TV technician for help.

This device complies with Part 15 of the FCC Rules. Operation is subject to the following two conditions: (1) this device may not cause harmful interference, and (2) this device must accept any interference received, including interference that may cause undesired operation.

Caution: Changes or modifications made to this device not expressly approved by Huawei Technologies Co., Ltd. may void the FCC authorization to operate this device.

Disposal and Recycling Information



This symbol on the device (and any included batteries) indicates that they should not be disposed of as normal household garbage. Do not dispose of your device or batteries as unsorted municipal waste. The device (and any batteries) should be handed over to a certified collection point for recycling or proper disposal at the end of their life. For more detailed information about the recycling of the device or batteries, contact your local city office, the household waste disposal service, or the retail store where you purchased this device.

For more detailed information about the recycling of the device or batteries, contact your local city office, the household waste disposal service, or the retail store where you purchased this device.

The disposal of this device is subject to the Waste from Electrical and Electronic Equipment (WEEE) directive of the European Union. The reason for separating WEEE and

batteries from other waste is to minimize the potential environmental impacts on human health of any hazardous substances that may be present.

Reduction of Hazardous Substances

This device is compliant with the EU Registration, Evaluation, Authorisation and Restriction of Chemicals (REACH) Regulation (Regulation No 1907/2006/EC of the European Parliament and of the Council) and the EU Restriction of Hazardous Substances (RoHS) Directive (Directive 2002/95/EC of the European Parliament and of the Council). For more information about the REACH compliance of the device, visit the Web site www.huaweidevice.com/certification. You are recommended to visit the Web site regularly for up-to-date information.

EU Regulatory Conformance

Hereby, Huawei Technologies Co., Ltd. declares that this device is in compliance with the essential requirements and other relevant provisions of Directive 1999/5/EC.

For the declaration of conformity, visit the Web site www.huaweidevice.com/certification.

CE 0682 ⚠

Note: Observe the national local regulations in the location where the device is to be used. This device may be restricted for use in some or all member states of the European Union (EU).

Note: This device may be operated in all member states of the EU.

France: Outdoor use limited to 10 mW e.i.r.p. within the band 2454-2483.5 MHz.

Italy: For private use, a general authorisation is required if WLAN's are used outside own premises. For public use, a general authorisation is required.

Luxembourg: General authorisation required for network and service supply.

Norway: This subsection does not apply for the geographical area within a radius of 20 km from the centre of Ny-Ålesund.

Numerics

12-key PhonePad	75
-----------------------	----

A

about canvas	28
accept an invitation	142
add a favorite contact	64
add a new contact	63
add a new friend	141
add a new screen item	25
add an alarm	168
add an email account	89
add an entry to your contacts	55
add music to a playlist	131
add other email accounts	91
add slideshows	87
adjust the media volume	181
adjust the ringer volume	180
adjust the screen brightness	178
adjust the speech rate	185
adjust the time before the screen turns off	179
advanced panel	176
agenda view	160
airplane mode	57
alarm list screen	167

Album contents screen	117, 120
Android keyboard	76
Android keyboard settings	80
answer a call	52

B

back key functions	12
back up my settings	188
Bluetooth	102
bookmark a web page	101
browser settings	102

C

calculator	175
Calendar	157
calendar panel	158
call log	54
call settings	182
Capture screen	110
change a theme	40
change a wallpaper	40
change an account's synchronization settings	156
change email account settings	92
change the calendar view	159
change the phone ringtone	181

charge the battery	15
check the network connection	96
close the notification panel	44
communicate with a contact	70
conference call	55
configure general sync settings	152, 154, 155
connect a Bluetooth device	104
connect to a wireless network	97
contacts details	62
CooTek T+	75
copy a file	174
copy music to the microSD card	127
copyright	5
create a folder	38, 173
create a Google account	136
create a multimedia message	86
create a text message	83
create an email	138
create an email message	94
create an event	164
crop a picture	121, 126
customize the alarm settings	169
customize the calendar settings	165
customize your account synchronization	154
customize your Gmail/Google Mail settings	140

cut a file 174

D

date settings 177

day view 161

delete a contact 64

delete an email accounts 91

dialer 50

dialpad 49

disconnect a Bluetooth device 105

display area 23

download the upgrade package 190

E

edit a contact 65

Email message screen 94

end a call 53

end key functions 12

entertainment 109

expand the Canvas 29

export regulations 7

F

file manager 172

FM Radio screen 133

fm radio widget 33

Index 210

forward an email	139
free up your phone memory	188
Full QWERTY	75

G

gallery screen	114
get directions	145

H

home key functions	12
--------------------	----

I

import contacts from the SIM card	68
import regulations	7
important information about the battery	15
input settings	77
install an application	148
install the battery	14
install the microSD card	45
install the SIM card	13
install the voice data	184
Interface switching buttons	24

L

landscape keyboard	77
library panel	129

Index	211
-------	-----