

Using the Media Library

The music stored in your mobile phone is classified into the following categories: Artists, Albums, Songs, and Playlists. You can touch the desired category to display the list of music files falling into this category.

You can touch the desired music file for playing.

Creating a playlist

- 1) Touch a category on the Music Library screen.
- 2) In the list that appears, use the TRACKBALL to navigate to the song that you want to add in the playlist.
- 3) Touch and hold the song or press the Menu key, then touch **Add to playlist** on the options menu.
- 4) On the Add to playlist screen, to add the song to an existing playlist, touch the playlist name in the list. Or you can press the menu key and touch **Create new playlist** to create a new list.


Note: While on any screen of music, except on the music playing screen, you can rotate your mobile phone counterclockwise to go to the album selection screen.

Picture and video

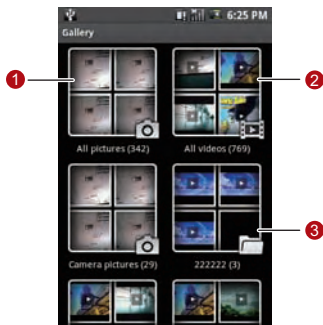
The Gallery application can automatically search for the pictures and videos stored on your mobile phone and MicroSD card. In addition, the Gallery application sorts these pictures and videos with folders. With the Gallery application, you can view and edit pictures, use a picture as the wallpaper or a contact image, and watch the videos stored on your mobile phone and MicroSD card.

Using the Gallery

To open the Gallery application, do as follows:

- Touch , and then choose **Gallery** to open the viewer.
- On the picture preview screen of the camera, press the Menu key, and then choose **Gallery** to open the viewer.

The Gallery application categorizes your pictures and videos by storage location and stores these files in folders. The two folders in the upper part of the Gallery screen are All Pictures and All Videos. You can touch either of the folders to view pictures or videos.



- 1 Touch to display all videos.
- 2 Touch to display all videos.
- 3 Displays pictures and videos in folders.

Press the Menu key to display the Gallery panel. On the panel, you can do as follows:

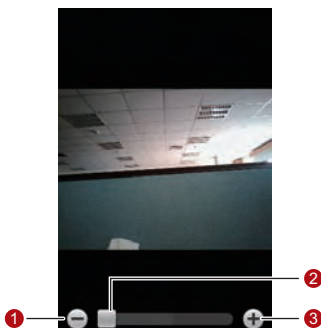
- Touch Capture picture to open the camera and switch to the picture capture mode.

- Touch Capture video to open the camera and switch to the video capture mode.
- Touch Slideshow to play pictures as a slideshow if the selected folder stores pictures.
- Touch Settings to go to the Gallery setting screen. Then, you can set the size of a picture, the arrangement of pictures, whether to prompt confirmation upon the deletion of a picture, and how to play a slideshow.

Viewing a Picture

- 1) Tap the intended folder to view the pictures contained in the folder.
- 2) Tap the intended picture to view it full-screen.

When viewing a picture in full screen, flick the picture left and right to view the previous or next picture.

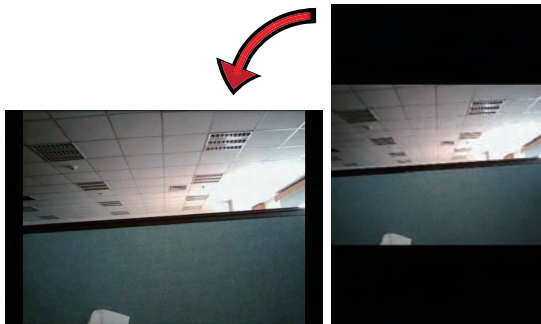


1 Touch to zoom in on a picture.

2 Drag to zoom in or zoom out on a picture.

3 Touch to zoom out on a picture.

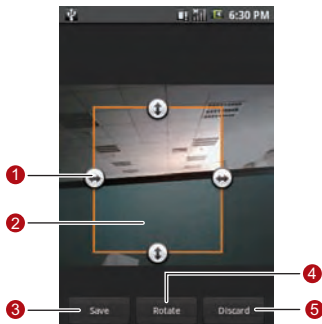
The picture viewer supports the automatic rotation function. When you rotate your mobile phone, the picture adjusts itself to the rotation.



Editing and Setting a Picture

When viewing a picture in full screen, press the Menu key to display the operation panel. You can edit or set a picture by selecting the desired option.

- To crop a picture, do as follows:
 - a) Press the Menu key to display the operation panel. Then, touch Crop.
 - b) Touch the related areas to adjust the size and position of the cropper.



-
- | | |
|---|--|
| 1 | Touch and drag the cropper arrows inwards to or outwards from the center of the cropper to resize the cropper. |
| 2 | Touch and hold inside the cropper, and drag your finger to the desired position. |
| 3 | Touch to apply the changes to the picture. |
| 4 | Touch to rotate the onscreen picture. |
| 5 | Touch to discard the changes. |
-

c) Touch Save to save the cropped picture.

- To rotate a picture, do as follows:
 - a) Press the Menu key to display the operation panel. Then, touch Rotate.
 - b) Select either Rotate left or Rotate right.
- To share a picture, do as follows:
 - a) Press the Menu key to display the operation panel. Then, touch Share.
 - 3) From the options menu that is displayed, select Bluetooth, Email, Google mail, Messaging, Picasa, or RoadSync Message to share a picture with your friend.
- To display your pictures as a slideshow, do as follows:

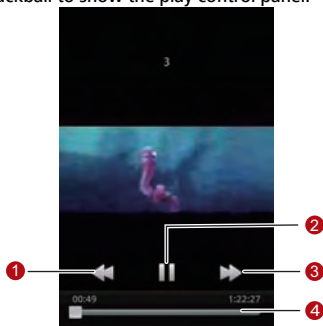
Press the Menu key to display the operation panel. Then, touch Slideshow. Your pictures in the selected folder are displayed as a slideshow.
- To use a picture as the wallpaper or incoming call image, do as follows:
 - a) Press the Menu key to display the operation panel, and then choose More > Set as.
 - 4) Use a picture as the contact icon, group icon, or wallpaper.
- Other operations

You can also delete a picture, view the picture details, or configure the picture viewer by using the operation panel.

Playing a Video

Playing a Video


Touch the video you want to watch in Gallery to start playing the video. Touch the screen or press the trackball to show the play control panel.



- | | |
|---|--|
| 1 | Touch to rewind the video. |
| 2 | Touch to pause or resume playing the video. |
| 3 | Touch to fast forward the video. |
| 4 | Drag the progress slider to jump to any part of the video. |

Camera

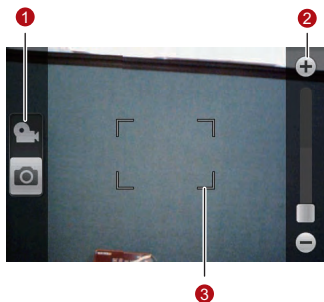
Opening and Closing the Camera

- Touch , and then choose **Camera** to open the camera.
- On the picture capture screen, press the Home/Back key to close the camera.

Note: You can press the Capture key when your mobile phone displays any screen to open the camera.

Picture Capture Screen

On the picture capture screen, touch the screen to show capture controls.



- | | |
|---|---|
| 1 | Switch between the picture capture mode and video capture mode. |
| 2 | Drag to zoom in or zoom out. |
| 3 | When the focus frame turns red, it indicates that your subject is framed. |

On the picture capture screen, press the Menu key to show the picture capture panel.

Gallery	Touch to open the Gallery application.
---------	--

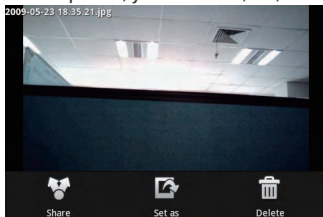
Secondary camera / Main camera	Touch to switch between the main camera and the secondary camera.
-----------------------------------	---

Settings	Touch to show the camera settings menu. Camerasettings: <ul style="list-style-type: none">• Store location in pictures: Choose to save the captured picture to the Pictures folder.• Storage in use: Choose to save the captured picture to your mobile phone or the MicroSD card.• Show captured picture: Choose to show the captured picture and operation menu after the capturing.• Picture resolution: Choose to define the resolution of the captured picture. Video Camerasettings: <ul style="list-style-type: none">• Storage in use: Choose to save the captured video to your mobile phone or the MicroSD card.• Show recorded video: Choose to show the captured video and operation menu after the capturing.• Mute during recording: Choose to mute the speaker during the capturing.• Video resolution: Choose to define the resolution of the video captured.• Video size: Choose to define the size of the video to be captured.
----------	---

Capturing a Picture

- 1) Frame the picture within the screen.
- 2) Press half-way down on the Capture key. The camera automatically focuses. When the focus frame turns green, it indicates that the focusing is done.
- 3) Press the Capture key fully to capture the picture.

- 4) After the picture is captured, you can share, set, or delete it..



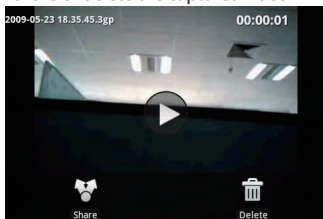
Share Touch to show the picture sharing menu. You can share the captured picture using Bluetooth, Email, Gmail, Messaging, Picasa, or RoadSync Message.

Set as Touch to show the picture setting menu. You can use the picture as the contact icon, group icon, or wallpaper.

Delete Touch to delete the captured picture.

Capturing a Video

- 1) Switch the capture mode to video capture mode.
- 2) Frame your object.
- 3) Press the Capture key or trackball to capture the video. Stop the capturing and save the capture video by pressing the Capture key or trackball again.
- 4) Then, you can share or delete the captured video.



Share Touch to show the picture sharing menu. You can share the capture video using Bluetooth, Email, Google mail, Messaging, YouTube, or RoadSync Message.

Delete Touch to delete the captured video.

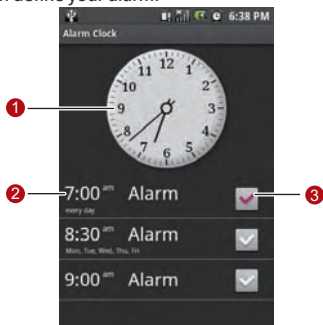
Game

Your mobile phone supports the game function. For details, refer to the help document delivered with the desired game.

Applications

Alarm Clock

- 1) Touch , and then choose **Alarm Clock** to open the alarm clock.
- 2) Then, you can define your alarm.



-
- | | |
|---|--|
| 1 | Shows the current time. Touch to change the clock display. |
| 2 | Touch to access the alarm setting screen. You can define the alarm time, ringtone, vibration, and repeat mode. |
| 3 | Touch to enable or disable an alarm. |
-

- 3) Press the MENU key to display the alarm clock control panel.

Add alarm	Touch to add a new alarm.
-----------	---------------------------


Hide clock / Show clock	Touch to toggle between showing or hiding the clock.
----------------------------	--

Settings

Touch to show the alarm setting menu. Then you can set whether alarms play when your phone is in silent mode.

Calendar

With the calendar function, you can view dates and set the reminders for appointments and meetings.

- 1) Touch , and then choose **Calendar** to open the calendar.
- 2) By default, the calendar is displayed in agenda mode. Press the MENU key to display the calendar menu. Then, you can touch **Month**, **Week**, or **Day** to switch the view mode.
- 3) Press the MENU key, and then choose **Calendar** to create a reminder for a new appointment or meeting.

Note: You need to obtain a Google account before using this function. To obtain a Google account, follow the instructions in the wizard.

Calculator

Touch , and then choose **Calculator** to open the calculator.

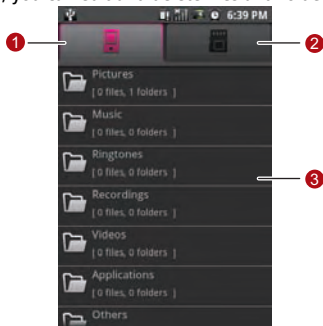
- Press the Menu key to open the calculator menu. Then, you can choose either the basic mode or the advanced mode. In advanced mode, you can perform calculations based on advanced functions.
- Touch the virtual keys to enter numbers or mathematical operators. Touch **Clear** to clear the entered information.

File Management

Browsing a file

Touch , and then choose **File Manager** to open the file manager.

With the file manager, you can edit and delete files and folders.



- | | |
|---|--|
| 1 | Touch to show the files and folders in your mobile phone memory. |
| 2 | Touch to show the files and folders on the MicroSD card. |
| 3 | Shows the list of files and folders. You can flick the list to browse all files and touch the desired file to open it. In addition, you can open the file operation menu by touching and holding the desired file or folder. Then, you can open, cut, copy, delete, and rename the file or folder, and see the details about the file or folder. |

Note: The options menu for file management may not be completely shown on one page. Therefore, you need to flick the menu upwards and downwards, or roll the trackball to browse all options.

Cutting or Copying a File

- 1) In the file manager, press the Menu key to show the operation panel. Then, touch Cut or Copy.
- 2) Touch the desired file or folder. The selected file is ticked in red.
- 3) You can also press the Menu key to open the operation panel. Then, touch Select All to select all files in the desired folder or touch Unselect All to cancel the selection.

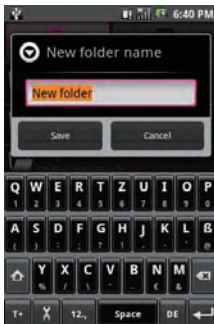
- 4) Press the Menu key to open the operation panel. Then, touch Done to complete the cutting or copying operation.
- 5) Select the path to which the picture is pasted. Press the Menu key to open the operation panel, and then touch Paste to paste the file to the selected path.

Deleting a File

- 1) In the file manager, press the Menu key to open the operation panel. Then, touch Delete.
- 2) Touch the file or folder to be deleted. The selected file is ticked in red.
- 3) You can also press the Menu key to open the operation panel. Then, touch Select All to select all files in the desired folder or touch Unselect All to cancel the selection.
- 4) Press the Menu key to open the operation panel. Then, touch Done to complete the deletion.

Creating a Folder

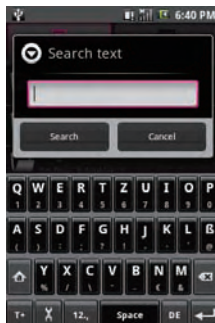
- 1) In the file manager, touch to access the desired directory of the folder to be created.
- 2) Press the Menu key to open the operation panel, and then touch New folder.
- 3) Enter the new folder name in the text box.



- 4) Touch Save to create the folder.

Quick Search

- 1) In the file manager, touch to access the directory where your desired file is stored.
- 2) Press the Menu key to open the operation panel, and then touch Search.
- 3) Enter the key word of the name of the desired file or folder in the search text box.



- 4) Touch Search. Your mobile phone starts to search the files in all folders and subfolders of the selected directory.
- 5) The search result is shown in a list. Touch the desired file to open it.
- 6) Touch New search for a new search; press the Home/Back key to return to the file manager screen.

Managing Memory

In the file manager, press the Menu key to open the operation panel, and then touch Memory Status to go to the memory management screen.

Then you can view the memory status and available memory of your mobile phone and the MicroSD card. In addition, you can format and upgrade your mobile phone and the MicroSD card.

Refer to Managing Storage for details.

Note: If no MicroSD card is inserted, all files are automatically saved to your mobile phone memory. To ensure the smooth running of your mobile phone, do not save too many files to the phone memory.

Recorder

Touch , and then choose **Sound Recorder** to open the recorder.




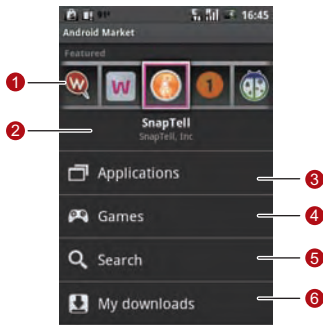
- | | |
|---|---|
| 1 | Shows the recording duration. |
| 2 | Shows the volume of the captured audio signals. |
| 3 | Touch to play back or pause the recording. |
| 4 | Touch to start to record your message. |
| 5 | Touch to stop recording or playing back. |

Android Market

Android Market provides direct access to useful applications and fun games which you can download and install on your mobile phone. Android Market also allows you to send feedback and comments about an application, or flag an application that you find objectionable or incompatible with your phone.

Using Android Market

- 1) Touch , and then choose Market to open Android Market.
- 2) If you use Android Market for the first time, define your Google account according to the prompts.



- | | |
|---|--|
| 1 | Shows featured applications. You can touch the icon to view the detailed information about your desired application. |
| 2 | Shows the name of the selected application. |
| 3 | Touch to show the application list. |
| 4 | Touch to show the game application list. |
| 5 | Touch to go to the search screen. Then, you can search for your desired application in Android Market. |
| 6 | Touch to view the downloaded application. |

Getting Help

If you ever need help or have questions about Android Market, press the Menu key and touch **Help**. The Browser will take you to the Android Market Help webpage.

Finding Applications

The Android Market home page provides several ways to find applications. It showcases featured applications and includes a list of item applications by category, a list of games, a link to search, and a link to My downloads.

Scroll horizontally through the featured items or select a category to browse its contents, then select a subcategory. Within each subcategory you can select to view items sorted By popularity or By date.

All items in a subcategory are listed in each tab; those in the By popularity tab are sorted from most popular to least popular, and those in the By date tab are sorted from newest to oldest.

Installing an Application

- 1) Navigate to the item you want to download, and select it.
- 2) In the item details screen, read more about the application, including its cost, overall rating, and comments by users. If you scroll down to the About the developer section, you can view more applications by this developer, visit the developer's website, and send the developer an email message.
- 3) To install the item, select either **Install** (if item is free) or **Buy**, whichever appears.
- 4) To check the progress of the download, open the Notifications panel. Most applications are installed within seconds. If you want to stop downloading the item, touch **Cancel download**.

You can choose **Settings** from the main menu to configure your mobile phone.

Setting the Date and Time

Settings/Date & time

You can set the date, time, time zone, and format of the date and time. Your mobile phone can automatically use the time provided by the network.

Note: When the time provided by the network is automatically used, you cannot set the date, time, and time zone by yourself.

On the setting screen, touch UP or DOWN to adjust your settings. Then, touch **Settings** to complete your setting.

Setting Sound and Display

Settings/Sound & display

Setting Sound

You can set the ringtone volume, media volume, phone ringtone, vibration, notification ringtone, audible tap tone, audible operation tone, and MicroSD card notification tone.

Note: The description of a setting is displayed below the corresponding setting option.

Setting Display

You can set whether the screen adjusts itself to the rotation of your mobile phone and whether to display animations when you open or display a screen. You can also set the screen brightness and the standby duration of the screen.

Setting the Locale and Text

Settings/Locale & text

You can set the display language (area) of your mobile phone. In addition, you can customize the dictionary that is used during text input and add certain frequently used phrases to the dictionary.

Setting Calling

Settings>Call settings

You can set the parameters related to the calling function.

- Fixed Dialing Numbers (FDNs): FDN allows you to restrict outgoing calls to a fixed set of numbers. To enable this feature you must know the SIM PIN2 code of your mobile phone. You can obtain the PIN2 code from your wireless service provider, assuming this feature is supported.
- Voicemail: Set the voicemail number.
- Call forwarding: Select how you want your phone to handle busy, unanswered, and unreachable calls. You can also set the call forwarding option for all incoming calls.
- Additional call settings: Turn the caller ID and call waiting services on or off.
- Network operators: Scan and select a wireless network operator manually, or set the network selection to Automatic.

Setting the Network

Settings/Wireless controls

You can set whether to enable the Wi-Fi function, the Bluetooth function, and whether to enable the flying mode. You can also select the network.

For the settings of the Wi-Fi function and Bluetooth function, see the chapter "Connection."

Note: Press and hold the Power key. Then, you can choose the flying mode on the displayed screen.

Setting the Contacts

Settings/MyPhonebook settings

You can define your contacts, copy the contacts in the SIM card to your mobile phone, manage your contacts, and set birthday reminders.

Sync Settings

Settings/Sync Settings

You can define the device that your mobile phone synchronises with. It can be the T-Mobile server, the Google server, or a PC.

Data synchronization

Settings/Data synchronization

You can define which applications to be synchronised through the network and whether to allow background data synchronisation or automatic data synchronisation.

Note: You need to obtain a Google account before using this function. To obtain a Google account, follow the instructions in the wizard.

Setting the Security

Settings/Security & location

You can set whether to enable the GPS or set the password for your mobile phone.

My Location Sources

- User Wireless networks: Choose whether to use network positioning in other applications.
- Enable GPS satellites: Choose whether to enable the GPS.

SIM Card Lock

You can set whether to lock the SIM card or change the personal identification number (PIN) of the SIM card.

Note: The PIN code is used to protect your SIM card from unauthorized use. Usually you will be supplied with the PIN code when you get the SIM card from your service provider. If you have not got one or you have lost it, please consult your service provider.

Passwords

You can set whether to display the entered letters when you enter the password.

Managing Applications

Settings/Application settings

You can manage the applications installed on your mobile phone.

- **Unknown sources:** Set whether to allow the installation of the applications from not-Market.
- **Manage applications:** Manage the applications installed on your mobile phone.
- **Development:** This is for the configuration from developers.

Managing Storage

Using Memory Management

Choose  > **Settings** > **SD card & phone storage** to go to the memory management screen.

In memory management, you can view the memory status and available memory of your mobile phone and the MicroSD card. In addition, you can format and upgrade your mobile phone and the MicroSD card.


- **Unmount SD card:** Touch to stop your mobile phone reading and writing the MicroSD card. Then, you can safely remove the MicroSD card.
- **Format SD card:** Touch to format the MicroSD card.
- **Factory data reset:** Touch to reset your mobile phone to its initial state and clear all the data in your mobile phone.
- **Upgrade:** Touch to upgrade the system version of your mobile phone. Refer to **Upgrading the System Version of Your Mobile Phone** for details.

Note:

- **The Format SD card option deletes all data on the MicroSD card. Back up the data on the MicroSD card before you format the MicroSD card.**
- **The Factory data reset option deletes all data on your mobile phone and resets your mobile phone to its initial state — the state you turned on your mobile phone for the first time. Make sure to back up important data you have on your mobile phone before you perform a factory data reset.**

Upgrading the System Version of Your Mobile Phone

You can upgrade the system version of your mobile phone using the software upgrade package downloaded from the website of your operator. Do as follows:

- 1) Download the upgrade file to the root directory of the MicroSD card.
- 2) Choose  > **Settings** > **SD card & phone storage** to go to the memory management screen, and then touch Upgrade to start the upgrade.

Note: You can download the software upgrade files from the following websites:

- TMCZ: <http://www.t-mobile.cz>
- TMNL:
<http://www.t-mobile.nl/persoonlijk/htdocs/page/service-contact/software-updates.aspx>
- TMD: <http://www.t-mobile.de/meinhandy>
- TMA:
http://www.t-mobile.at/privat/service_hilfe/Download_Center/Software_Downloads/index.html
- TMUK: <http://www.t-mobile.co.uk/>
- ERA: <http://www.era.pl>

Warnings and Precautions

This section contains important information pertaining to the operating instructions of your device. It also contains information about how to use the mobile safely. Read this information carefully before using your device.

Electronic Device

- Power off your device if using the device is prohibited. Do not use the device when it causes danger or interference with electronic devices.

Medical Device

- Power off your device and follow the rules and regulations set forth by the hospitals and health care facilities.
- Pacemaker manufacturers recommend that a minimum distance of 15 cm be maintained between a device and a pacemaker to prevent potential interference with the pacemaker. If you are using a pacemaker, use the device on the opposite side of the pacemaker and do not carry the device in your front pocket.
- Some wireless devices may affect the performance of the hearing aids. For any such problems, consult your service provider.

Potentially Explosive Atmospheres

- Switch off your device in any area with a potentially explosive atmosphere, and comply with all signs and instructions. Areas that may have potentially explosive atmospheres include the areas where you would normally be advised to turn off your vehicle engine. Triggering of sparks in such areas could cause an explosion or fire, resulting in bodily injuries or even deaths. Do not switch on the device at refueling points such as service stations. Comply with restrictions on the use of radio equipment in fuel depots, storage, and distribution areas, and chemical plants. Also, adhere to restrictions in areas where blasting operations are in progress. Before using the device, watch out for areas that have potentially explosive atmosphere that are often, but not always, clearly marked. Such locations include areas below the deck on boats, chemical transfer or storage facilities and areas where the air contains chemicals or particles such as grain, dust, or metal powders. Ask the manufacturers of vehicles using liquefied petroleum gas (such as propane or butane) if this device can be safely used in their vicinity.

Traffic Security

Observe local laws and regulations while using the device. Also, if using the device while driving a vehicle, please comply with the following guidelines:

- Concentrate on driving. Your first responsibility is to drive safely.
- Do not talk on the device while driving. Use hands-free accessories.
- When you have to make or answer a call, park the vehicle at the road side before using your device.
- RF signals may affect electronic systems of motor vehicles. For more information, consult the vehicle manufacturer.
- In a motor vehicle, do not place the device over the air bag or in the air bag deployment area. Otherwise, the device may hurt you owing to the strong force when the air bag inflates.
- Do not use your device while flying in an aircraft. Switch off your device before boarding an aircraft. Using wireless devices in an aircraft may be dangerous to the operation of the aircraft, disrupt the wireless telephone network, and may be considered illegal.

Operating Environment

- Do not use or charge the device in dusty, damp or dirty places or places with magnetic fields. Otherwise, the circuit may not function properly.
- The device complies with the RF specifications when the device is used near your ear or at a distance of 1.5 cm from your body. Ensure that the device accessories such as a device case and a device holster are not composed of metal components. Keep your device 1.5 cm away from your body to meet the requirement earlier mentioned.
- On a thunder and stormy day, do not use your device when it is being charged, to prevent any danger caused by lightning.
- When you are on a call, do not touch the antenna. Touching the antenna affects the call quality and results in increase in power consumption. As a result, the talk time and standby time are reduced.
- While using the device, observe the local laws and regulations, and respect others' privacy and legal rights.
- Use accessories authorized by manufacturers. Using unauthorized accessories will render the warranty null and void.

- Keep the ambient temperature between -10 °C and 45 °C while the device is being charged. Keep the ambient temperature between -10 °C to 45 °C for using the device powered by battery.

Preventing Hearing Damage

Using the receiver, earbuds, headphones, speakerphone, or earpieces at high volume can result in permanent hearing loss. Be extremely careful when listening at high decibel levels. Set the volume to a safe level. If you experience strange sounds in your ears like ringing or if you hear muffled speech, get your hearing checked. If you continue to use high volume, your hearing will soon get affected.

Hearing experts offer the following suggestions to protect your hearing:

- Reduce the time you use the receiver, earbuds, headphones, speakerphone, or earpieces at high volume.
- Do not increase the volume to block noisy surroundings.
- Reduce the volume if you can't hear people speaking near you.

Safety of Children

Please comply with all precautions with regard to children's safety. Letting the child play with your device or its accessories, which may include parts that can be detached from the device, may prove dangerous, as it may present a choking hazard. Make sure that small children are kept away from the device and accessories.

Environment Protection

Follow all the local regulations regarding the disposal of your devices or electrical accessories (such as chargers, headsets, or batteries). Recycle them. Do not dispose of an exhausted battery or a used device in a garbage can.

Accessories

Use only the accessories, such as the charger, battery, and headset, delivered by manufacturer. Using accessories of other manufacturers or vendors with this device model might invalidate any approval or warranty applicable to the device, might result in the non-operation of the device, and might be dangerous.

Battery and Charger

- The battery can be charged and discharged hundreds of times before it eventually wears out. When the standby time and talk time are shorter than normal, replace the battery.
- Use the AC power supply defined in the specifications of the charger. An improper power voltage may cause fire or the charger may not function properly.
- Do not connect two poles of the battery with conductors such as metal materials, keys or jewelries. Otherwise, the battery may be short-circuiting and may cause injuries and burns on your body.
- Do not disassemble the battery or solder the battery poles. Otherwise, it may lead to electrolyte leakage, overheating, fire, or explosion.
- If battery electrolyte leaks out, make sure that the electrolyte does not touch your skin and eyes. When the electrolyte touches your skin or splashes into your eyes, wash your eyes with clean water immediately and consult a doctor.
- If the battery is damaged, or the color changes or gets abnormally heated while you charge or store the battery, remove the battery immediately and stop using it. Otherwise, it may lead to battery leakage, overheating, explosion, or fire.
- If the power cable is damaged (for example, the lead is exposed or broken), or the plug loosens, stop using the cable at once. Otherwise, it may lead to electric shock, short-circuit of the charger, or a fire.
- Do not dispose of batteries in fire as they may explode. Batteries may also explode if damaged.

Clearing and Maintenance

- The device, battery, and charger are not water-resistant. Keep them dry. Protect the device, battery and charger from water or vapor. Do not touch the device and charger with a wet hand. Otherwise, it may lead to short-circuit or malfunction of the device and electric shock to the user.
- Do not place your device, battery, or charger in places where it can get damaged because of collision. Otherwise, it may lead to battery leakage, device malfunction, overheating, fire, or explosion.
- If the ambient temperature is considerably low or high, the capacity and life of the battery is reduced. When the temperature is lower than 0 °C, performance of the battery is affected.
- Do not place magnetic storage media such as magnetic cards and floppy disks near the device. Radiation from the device may erase the information stored on them.

- Do not leave your device, battery, or charger in a very hot or cold place. Otherwise, they may not function properly and may lead to a fire or an explosion.
- Do not place sharp metal objects such as pins near the earpiece. The earpiece may attract these objects and hurt you when you are using the device.
- Before you clean or maintain the device, power off the device and disconnect it from the charger.
- Do not use any chemical detergent, powder, or other chemical agents (such as alcohol and benzene) to clean the device and the charger. Otherwise, parts of the device may get damaged or a fire can be caused. You can clean the device and the charger with a piece of damp and soft antistatic cloth.
- Do not dismantle the device or accessories. Otherwise, manufacturer is not liable to pay for damages as the device and accessories are not covered by warranty.

Emergency Call

You can use your device for emergency calls in the service area. The connection, however, cannot be guaranteed in all conditions. You should not rely solely on the device for essential communications.

Certification Information (SAR)

This device meets guidelines for exposure to radio waves.

Your device is a low-power radio transmitter and receiver. As recommended by international guidelines, the device is designed not to exceed the limits for exposure to radio waves. These guidelines were developed by the independent scientific organization ICNIRP and include safety measures designed to ensure safety for all users, regardless of age and health.

Specific Absorption Rate (SAR) is the unit of measurement for the amount of radio frequency energy absorbed by the body when using a device. The SAR value is determined at the highest certified power level in laboratory conditions, but the actual SAR level of the device when being operated can be well below the value. This is because the device is designed to use the minimum power required to reach the network.

The SAR limit adopted by USA and Canada is 1.6 watts/kilogram (W/kg) averaged over one gram of tissue. The highest SAR value reported to the FCC and IC for this device type when tested for use at the ear is 0.662 W/kg, and when properly worn on the body is 0.474 W/kg.

The SAR limit also adopted by Europe is 2.0 watts/kilogram (W/kg) averaged over 10 gram of tissue. The highest SAR value for this device type when tested at the ear is 0.719 W/kg.

FCC Statement

This equipment has been tested and found to comply with the limits for a Class B digital device, pursuant to Part 15 of the FCC Rules.

This device complies with part 15 of the FCC Rules. Operation is subject to the following two conditions: (1) This device may not cause harmful interference, and (2) this device must accept any interference received, including interference that may cause undesired operation.

These limits are designed to provide reasonable protection against harmful interference in a residential installation. The operation is subject to the condition that this device does not cause harmful interface.

This equipment generates, uses and can radiate radio frequency energy and, if not installed and used in accordance with the instructions, may cause harmful interference to radio communications. There is no guarantee, however, that interference does not occur in a particular installation. If this equipment does cause harmful interference to radio or television reception, which can be determined by turning the equipment off and on, the user is encouraged to try to correct the interference by one or more of the following measures:

- Reorient or relocate the receiving antenna.
- Increase the separation between the equipment and receiver.
- Connect the equipment into an outlet on a circuit different from that to which the receiver is connected.
- Consult the dealer or an experienced radio/TV technician for help.

Warning: Changes or modifications made to this device not expressly approved by Huawei Technologies Co., Ltd. may void the FCC authorization to operate this device.

EU regulatory conformance

Hereby, Huawei Technologies Co., Ltd. declares that this device is in compliance with the essential requirements and other relevant provisions of Directive 1999/5/EC.

For the declaration of conformity, visit the Web site www.huaweidevice.com/certification.

Notice: Observe the national local regulations in the location where the device is to be used. This device may be restricted for use in some or all countries of European Union.

CE06820

France: Outdoor use limited to 10 mW e.i.r.p. within the band 2454-2483.5 MHz.

Italy: For private use, a general authorisation is required if WAS/RLAN's are used outside own premises. For public use, a general authorisation is required.

Luxembourg: General authorisation required for network and service supply.

Norway: This subsection does not apply for the geographical area within a radius of 20 km from the centre of Ny-Ålesund.

You can find a copy of the Declaration of Conformity at...