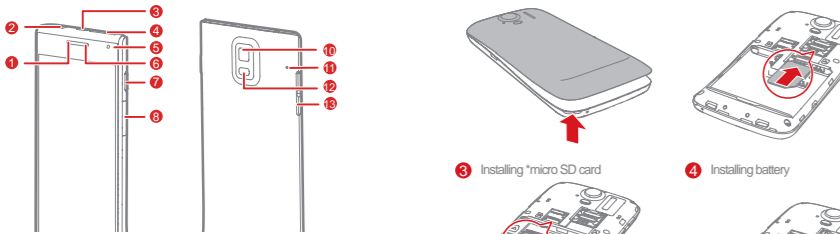


Getting to Know Your Phone

Figures in this guide are provided for your reference only. Depending on the software version, your phone's user interface may be different from the user interface shown in the figures.



1	Status indicator	7	Noise reduction microphone
2	Secondary camera	8	Camera
3	Headset jack	9	Speaker
4	Earpiece	10	Flash unit
5	Charger jack/USB port	11	Power key
6	Microphone	12	Volume keys

- Press and hold to power on your phone.
- Press and hold to display the options menu from where you can power off the phone and perform some shortcut operations.
- Press to lock the screen when your phone is active.
- Press and hold for 10 or more seconds to forcibly power off the phone.

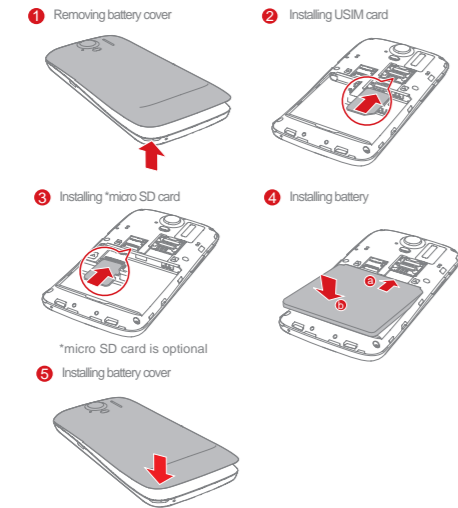
- Touch to return to the previous screen.
- Touch to exit the current application.

- Touch to return to the Home screen.

- Touch to display the current screen's options menu (some screens have no menu).

Installing USIM card, Battery and microSD Card

Power off your phone before installation.

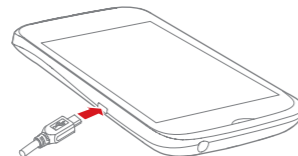


Do not install or remove a USIM card or a microSD card when your phone is powered on.

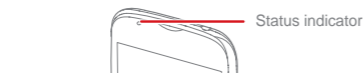
Charging Your Phone

When charging your phone while it is powered on, the battery is fully charged when the battery icon changes to .

Use the charger provided with your phone. If the phone has not been used for a long time or if the battery charge is fully depleted, the phone may not power on immediately after the charger is plugged in. Please charge the battery for a while before attempting to power on the phone.



Battery status indicator



Steady green: The phone is charging and the battery level is high or full.
Steady yellow: The phone is charging and the battery level is higher than 10%.
Steady red: The phone is charging and the battery level is low.
Blinking red: The battery level is low and the phone needs to be charged.



Powering Your Phone On or Off

Powering Your Phone On

Press and hold the key to power on your phone. If this is the first time you have powered on the phone, configure its initial settings. If your SIM card is PIN-protected, enter the personal identification number (PIN) to use the phone.

Powering Your Phone Off

Press and hold the key to display the options menu, and touch **Power off** to power your phone off.

If your phone malfunctions or cannot be properly powered off, press and hold the Power key for at least 10 seconds to forcibly power off your phone.

Using the Touchscreen

Touch: Touch the screen to select an option or start an application.



Touch and hold: Touch and hold the screen or text being edited to display the available options menu.

Slide: Quickly drag your finger across the screen vertically or horizontally.

Drag: Touch and hold an item, and then drag it to the desired location on the screen. For example, on the Home screen, you can move an icon by dragging it to another location or remove an icon by dragging it to the trash can.

Notification Panel

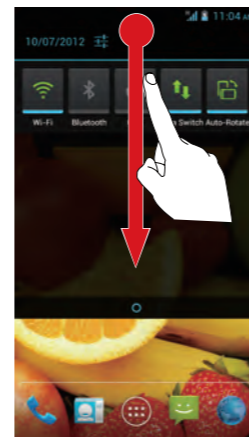
Opening the Notification Panel

Drag the status bar from the top of the screen downwards to open the notification panel, where you can do the following:

- Quickly start an application.
- Slide your finger left or right on a notification to delete it.
- Touch **X** to delete all notifications.
- Touch to display the **Settings** screen.

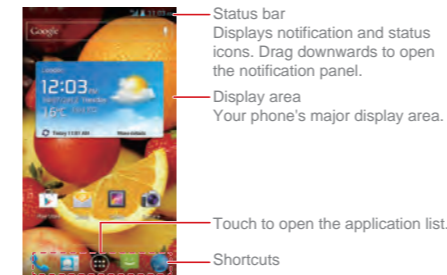
Closing the Notification Panel

Drag the tab at the bottom of the notification panel upwards.



Home Screen

This section uses the default theme as example.



Before dragging an icon on the Home screen, touch and hold the icon until your phone vibrates. Then you can drag the icon to another location or the trash can.

Viewing Other Home Screen Panels

To switch between different Home screen panels, slide your finger left or right across the screen.



Customizing the Home Screen

From the Home screen, you can touch to do the following:

- Change the wallpaper.
- Change the theme.
- Enable or disable the 3D Home theme.
- Manage applications.
- Go to **Settings**.

- Touch and hold a blank area on the Home screen to quickly change the wallpaper.
- Drag an application icon onto another application icon to create a folder.

Locking and Unlocking the Screen

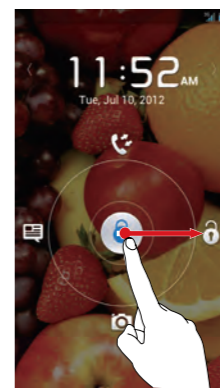
Locking the Screen

- If the phone is active, press the key to lock the screen.
- If the phone is idle for a specified period of time, the phone automatically locks its screen.

Unlocking the Screen

If the screen is off, press the key to turn it on.

If you drag the central lock icon to the lock icon on the right side of the screen, the Home screen is displayed. If you drag the central lock icon up, down, or left until it reaches the icon in that direction, you can quickly access the application corresponding to that icon.



Making and Receiving Calls

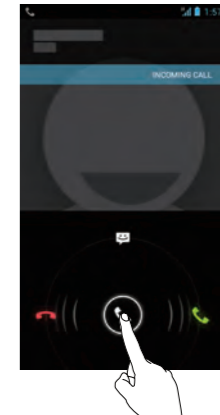
Making a call

From the Home screen, touch > **Phone** to access the dialer to make a call.

Receiving a Call

When there is an incoming call, you can perform the following:

- Answer the call: Drag the icon to the right to answer the call.
- Reject the call: Drag the icon to the left to reject the call.
- Reject the call with a text message: Drag the icon up to reject the call and send a predefined message to the caller.



Contacts

From the Home screen, touch > **People** to access the contacts screen.

Importing Contacts from the USIM Card

- From the contacts screen, touch > **Manage contacts**.
- Touch **Copy from SIM card**.
- Select the contacts you want to import, or touch **SELECT ALL** to import all the contacts.
- Touch **COPY**.
- Select the account to which you want to import the contacts.

Creating a Contact

From the contacts screen, touch , select an account, then edit and save the contact information.



Text Input

You can enter text using the onscreen keyboard.

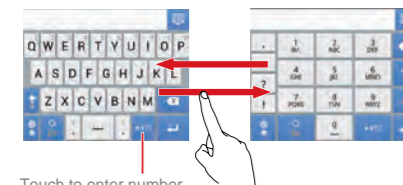
- Touch a text field to open the onscreen keyboard.
- Touch to hide the onscreen keyboard.

Switching Between Text Input Methods

When the onscreen keyboard is open, you can select the desired text input method from the notification panel.

Using the Huawei Text Input Method

Flick left or right across the screen to switch between the QWERTY and alphanumeric keyboards.



Touch to enter number input mode.

Messaging and Email

Sending a Message

1. From the Home screen, touch > **Messaging**.
2. Touch .
3. Enter the recipient's phone number and compose the message. Touch to add multimedia files, such as pictures, audio files, or slides.
4. Touch to send the message.

After you add multimedia files, the message changes from text message to multimedia message automatically.

Sending an Email

Before sending or receiving emails, you must set up an email account.

1. From the Home screen, touch > **Email**.
2. Touch .
3. Enter the recipient email address, email subject, and email content.

Touch to add attachments, such as pictures and audio files.

4. Touch to send the email.



Getting Connected

Enabling Data Services

From the Home screen, touch > **Settings**. In the **WIRELESS & NETWORKS** area, touch **More...** > **Mobile networks**, and select **Data enabled**.

Using data services may incur data traffic charges. To avoid unnecessary charges, deselect **Data enabled** to disable data services.

Using Wi-Fi

From the Home screen, touch > **Settings**. In the **WIRELESS & NETWORKS** area, select the Wi-Fi. Touch the Wi-Fi network you want to access.

If you enable Wi-Fi and data services simultaneously, Wi-Fi takes precedence over data services. Data services become available again when your phone is disconnected from a Wi-Fi network.

Multimedia

Camera and Video Recorder

Your phone supports multiple capture modes and picture effects. After pictures are captured, you can view and edit them in the gallery.

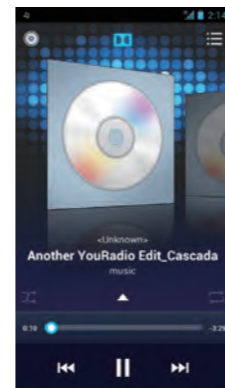
From the Home screen, touch > **Camera**.

On the viewfinder screen, slide down to configure the camera settings.

Music Player

From the Home screen, touch > **Music+** to launch the music player. From the media library, select the audio file that you want to play.

Touch to activate or deactivate the Dolby Mobile sound effect.

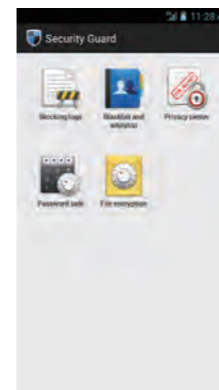


Security Guard

Security Guard is integrated with your phone to provide security functions, including blocking calls and messages; encrypting messages, calls, and folders. No charges are incurred during the use of this application.

From the Home screen, touch > **Security Guard** for the following options:

- **Blocking logs**: Check the calls and text messages that have been blocked.
- **Blacklist and whitelist**: View or edit the blacklist and whitelist. Based on your blocking settings, your phone blocks calls and messages from contacts in the blacklist and accepts calls and messages from contacts in the whitelist.
- **Privacy center**: Define private contacts; view records of calls and messages from or to the private contacts.
- **Password safe**: Record and encrypt your accounts and passwords, such as online banking accounts and email accounts.
- **File encryption**: Encrypt and decrypt files.
- Touch > **Settings** > **Enable service** to enable or disable the privacy protection and blocking function.

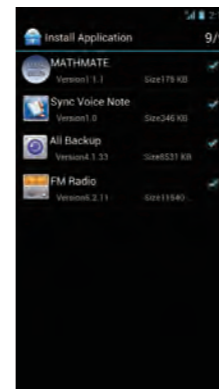


Installing Applications

To install applications:

1. From the Home screen, touch > **Applnstaller**. The phone then scans the microSD card and phone memory, and displays all applications found.
2. Select the application you want to install.
3. Touch > **Install**.

Touch , then **Select all** or **Deselect all** to select or deselect all applications.



Certification Information (SAR)

This device meets guidelines for exposure to radio waves. Your device is a low-power radio transmitter and receiver. As recommended by international guidelines, the device is designed not to exceed the limits for exposure to radio waves. These guidelines were developed by the independent scientific organization International Commission on Non-Ionizing Radiation Protection (ICNIRP) and include safety measures designed to ensure safety for all users, regardless of age and health.

The Specific Absorption Rate (SAR) is the unit of measurement for the amount of radio frequency energy absorbed by the body when using a device. The SAR value is determined at the highest certified power level in laboratory conditions, but the actual SAR level of the device when being operated can be well below the value. This is because the device is designed to use the minimum power required to reach the network.

The SAR limit adopted by USA and Canada is 1.6 watts/kilogram (W/kg) averaged over one gram of tissue. The Highest SAR value reported to the FCC and IC for this device type when tested for use at the ear is 0.963 W/kg, when properly worn on body is 0.969 W/kg, and when using Wi-Fi hotspot function is 0.969 W/Kg.

Operating Environment

The device complies with the RF specifications when the device is used near your ear or at a distance of 1.5 cm from your body. Ensure that the device accessories such as a device case and a device holster are not composed of metal components. Keep your device 1.5 cm away from your body to meet the requirement earlier mentioned.

Keep the ambient temperature between 0° C and 40° C while the device is being charged. Keep the ambient temperature between 0° C to 40° C for using the device powered by a battery.

Finding the User Guide

For more information about how to use your phone, please read the user guide. You can find the user guide by visiting the Web site: <http://www.huaweidevice.com/worldwide>.