

**Make the most of now.**

Vodafone 1240/V1240/U9130 Mobile Phone

User Manual

# Contents

## 1. Getting Started

About This Guide .....	1
Packing List .....	1
Installing SIM Card and Memory Card .....	2
Charging the Battery .....	4
Getting to Know Your Phone ...	6
Security Settings .....	11

## 2. Text Input

Changing the Text Input Method .....	12
Using Predictive Input Method	12
Using Traditional Input Method	12
Using Symbol Input Method ...	13

## 3. Customized Settings

Profiles .....	14
Phone Settings .....	14
Display Settings .....	14
Network Settings .....	15

## 4. Call Service

Contacts .....	16
Making a Call .....	17
Answering or Rejecting a Call ..	18

Call Settings .....	18
---------------------	----

## 5. Messaging

Sending a Message .....	20
Viewing a Message .....	20
Message Settings .....	21
Setting Your Email Account ...	21
Sending an Email .....	21
Viewing an Email .....	22

## 6. Entertainment

Accessing the Internet .....	23
Playing Music or Video .....	23
Using Camera or Video Camera	24
Games and Applications .....	24

## 7. Connectivity

USB .....	25
Bluetooth® .....	29

## 8. Organizer

Managing files .....	32
Viewing the Calendar .....	32
Creating a Note .....	33
Creating an Alarm .....	33
Synchronizing Data .....	33
Using Other Tools .....	34

## 9.Safety Information

RF Exposure .....	35
Distraction .....	38
Product Handling .....	39
Electrical Safety .....	43
Interference .....	44
Explosive environments .....	46
Environmental Protection .....	47

## 10.Appendix

Abbreviations .....	48
File Formats .....	49

# 1. Getting Started

## About This Guide

This guide describes how to find and use the functions or menus of your phone

All the images in this guide are provided only for your reference. The actual appearance and display depends on the phone that has been delivered.

## Packing List

Your phone package box contains the following:

- One mobile phone
- One Li-Polymer battery
- One travel charger
- One USB data cable
- One User Manual
- One Headset (Optional)

## Installing SIM Card and Memory Card

Insert your SIM card before using your phone. Remove the SIM card and the battery only after powering off your phone. To use the SIM card properly, please read the following instructions carefully.

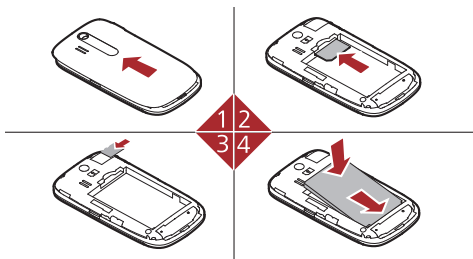
**NOTE:**

- *Keep the SIM card out of the reach of children.*
- *The SIM card and its metal contacts can be easily damaged by scratching or bending. Be careful when you carry, insert or remove the SIM card.*
- *Always disconnect the charger from the phone before loading or removing the SIM card.*

Your phone supports a memory card (microSD) with a capacity of up to 8 GB.

To load or remove the memory card, remove the battery cover.

The following figures show the installation of the SIM card and memory card.



- 1 Remove the battery cover.

---

- 2 Insert the SIM card.

---

- 3 (Optional) Insert the memory card.

---

- 4 Insert the battery.

---

## Charging the Battery

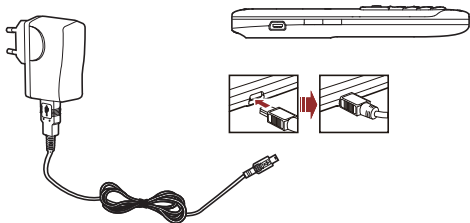
**NOTE:**

- *The battery discharges even while not being used. If you have not used it for a long time, please recharge it first.*
- *The charging time depends on the environmental temperature and the age of the battery.*
- *Do not strike, throw or cause any kind of violent shock to the battery, otherwise liquid leakage, body damage, overheating, fire or explosion may occur.*
- *The battery can be recharged but eventually wears out. If the battery lasts for a shorter time period than usual after being charged normally, replace it with a battery of the same type.*
- *Charge the battery by using the charger connector and the USB cable supplied with your phone.*

Before charging the battery, ensure that the battery has been properly loaded into your phone.

1. Connect the USB interface of the USB cable to the travel charger.
2. Plug in the travel charger to a power socket.
3. Connect the mini USB interface of the USB cable to the charger connector of your phone. When the battery is being charged, the charging indicator blinks continuously.

4. When the charging indicator stops blinking, it indicates that the battery is full. Disconnect the charger connector from the power socket.
5. Disconnect the USB cable from the phone.

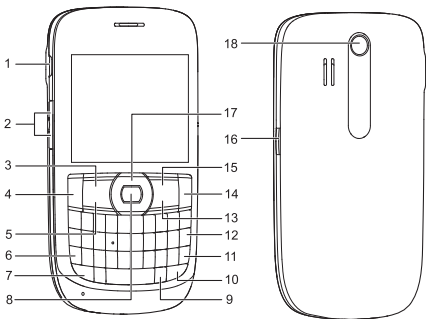


***NOTE: The plug of the cable is in trapezium shape. Reversely inserting the plug may damage the mobile phone and the charger.***



# Getting to Know Your Phone

## Appearance of Your Phone



1	Charger connector / Cable connector / Headset Jack	2	Volume keys	3	Left function key
4	Send key	5	Menu key	6	Symbol key

7	Shift key	8	OK key	9	Input options key
10	a/A key	11	Enter key	12	Delete key
13	Clear key	14	Power/End key	15	Right function key
16	Camera key	17	Scroll key	18	Camera

---

Left function key/Right function key

Perform the corresponding functions displayed above these keys.

---

Send key

Answer a call or view call records in standby mode.

---

Menu key

Quick access to main menu.

---

Symbol key

- Switch between profiles by holding down this key in standby mode.
- Display the list of symbols in input mode.

---

Shift key

Together with other key to input the top character in the key, such as number or symbol.

---

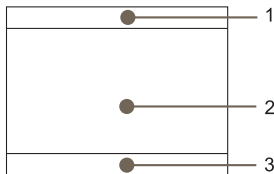
## »» Getting to Know Your Phone

---

OK key	Perform the corresponding functions displayed above OK key.
Input options key	Activate input menu in input mode.
a/A key	Switch between lowercase and uppercase in input mode.
Enter key	Move to a new line in input mode.
Delete key	Delete characters to the left of the cursor in input mode.
Clear key	Delete characters to the left of the cursor in input mode.
Power/End key	<ul style="list-style-type: none"><li>• Switch on and off your phone by holding down this key.</li><li>• Return to the standby mode and reject or end a call.</li></ul>
Camera key	Activate the camera.
Scroll key	<ul style="list-style-type: none"><li>• Scroll through a menu.</li><li>• Access the corresponding shortcut menu in standby mode.</li></ul>

---

# Home Screen



- 1 Icon bar

---

- 2 Desktop

---

- 3 Prompt bar

---




Indicates signal strength.



The normal profile is activated.



Indicates power level of the battery.



The headset is plugged in.



The phone is currently in a GSM network.



Your PC connects to the Internet through your phone.

»» Getting to Know Your Phone



The phone is currently in a WCDMA/HSDPA network.



You have new text messages.



You are using the roaming service.



You have new multimedia messages.



Bluetooth is enabled.



You have new Emails.



Call line 2 is enabled currently.



You have new voice mails.



Forwarding all incoming voice calls to line 1 or line 2.



You have new PUSH messages.



The phone is in a call.



Alarm clock is enabled.

# Security Settings

## *NOTE:*

- *For certain SIM cards, you need to enter the PIN2 code to use special functions.*
- *If you enter a wrong PIN code or wrong PIN2 code for three consecutive attempts, the SIM card is locked. To unlock the SIM card, enter the PIN Unlocking Key (PUK) code or PUK2 code.*
- *The PIN code, PIN2 code, PUK code, or PUK2 code is provided together with the SIM card. For details, consult your service provider.*
- *The initial phone password of the phone is 0000.*

Select **Settings > Security > Phone and SIM card**.

- *Reset your phone to the factory settings.*
- *Enable or disable the "Phone lock" and "PIN lock".*
- *Modify the phone password and PIN code.*
- *If your SIM card supports the Fixed Dialer Number (FDN) function, you can set the limit for phone numbers. Digital Rights Management*

Select **Settings > Security > DRM settings**. Enter the correct phone password and press OK key to confirm, and you can select roaming network.

## 2. Text Input

***NOTE:** You can press the shift key and another key to enter the character or number above the key.*

### Changing the Input Method

Press the input menu key, You can set the following:

- Enable or disable the prediction input mode
- Set caps lock on or off
- Set number lock on or off
- Choose input language
- Copy or cut the text

### Using Predictive Input Method

After the predictive input function is enabled, press the keys marked with required letters in turn. The predictive input function displays the words that comply with the conditions according to combination rules. Scroll to the desired words and press the scroll key to confirm the selection.

### Using Traditional Input Method

When prediction input method is off, you can use the traditional input method for entering alphabetic characters.

To enter the symbols or characters printed at the top of keys, you can press and hold the corresponding key, or press the shift key and the corresponding key.

## **Using Symbol Input Method**

You can press the symbol key to display the symbol screen, select symbols and press the OK key to confirm the selection.



# 3. Customized Settings

## Profiles

You can set different profiles according to different scenarios.

Select **Settings** > **Profiles** > Desired item. Select a profile. Press the OK key to enable the profile or select **Edit** to modify the profile.

## Phone Settings

Select **Settings** > Desired item, or select **Settings** > **Phone settings** > Desired item, You can set the following:

- System time of your phone
- Language of your phone
- Call settings

## Display Settings

Select **Settings** > **Display settings** > Desired item, you can set the following:

- Wallpaper
- Brightness of the screen
- Backlight time
- Keypad auto-lock

# Network Settings

Select **Settings** > **Network** > Desired item. You can set the following:

- Network mode
- Manual or automatic network selection
- Preferred operators

## 4. Call Service

***NOTE:** In the 3G network, you can make video calls, provided that the called party has a device supporting the video call function.*

### Contacts

Within the contacts menu you can manage your contacts. You can also set a contact number as a speed dialing number.

### Adding a Contact

1. Access **Contacts**.
2. Select **Options > New contact**.
3. Choose creating contact to phone or SIM card.
4. Enter the contacts details.
5. Select **Save** to save the contact.

### Searching for a Contact

1. Access **Contacts**.
2. Enter the contact name you are searching for.
3. The contacts corresponding to your input are listed.

# Making a Call

**NOTE:** During a call, you can select **Options** to perform operations in the options list.

## Making a Call from Keyboard

1. In standby mode, press number key to enter phone number.
2. To make a call, perform one of the following operations:
  - Press the send key or select **Options > Voice call** to make a voice call
  - Select **Options > Video Call** to make a video call
3. Press the end key to terminate a call.

## Making a Call from Contacts

1. Access **Contacts**.
2. Select the desired contact.
3. To make a call, perform one of the following operations:
  - Press the send key to make a voice call.
  - Select **Options > Call > Voice call** to make a voice call.
  - Select **Options > Call > Video call** to make a video call.

## Making a Call from Call History

You can view all the missed calls, received calls, or dialed numbers in call history, and select a specific history as follows.

1. Access **Calls**.
2. Select the desired call history.
3. To make a call, perform either of the following operations:
  - Press the send key to make a voice call.
  - Select **Options > Voice call/Video call** to make a call.

## Answering or Rejecting a Call

1. Answer a call according to the different answer modes.
  - If the answer mode is **Any key**, press any key except the end key.
  - If the answer mode is **Send key**, press the send key.
  - If the headset is in use, press the control key on the headset.
2. Press the end key or select **Options > Reject** to reject a call.

## Call Settings

To enable call forwarding, call waiting and call barring, consult your service provider.

By selecting **Settings > Phone settings > Call settings**, you can enable or disable the preceding functions.

Select **Settings > Phone settings > Call settings > General**> Desired item, you can set the following:

- Prompt to save unknown numbers.
- Automatic redialing after a call fails.
- Answering mode for incoming calls.
- Automatic answering mode.
- Display of your number to the called party. If you set it to automatic, the displaying is subject to your network.
- Calling line of your mobile phone.
- Set my number.

# 5. Messaging

## Sending a Message

1. Select **Messaging > Create message** to create a message.
2. During editing a message:
  - You can press down scroll key to add attachment files.
  - You can select **Options** to perform operations in the options list.
3. After editing the message, press OK key to add a recipient's number.
4. Press OK key to send the message.

## Viewing a Message

Your phone provides four mailboxes for message. **Inbox** stores received messages. **Drafts** stores created and saved messages. **Outbox** stores the messages that failed to be sent. **Sent** stores sent messages.

1. Select a mailbox from **Messaging**. Navigate between four mailboxes and templates through the scroll key.
2. Select a message and open via OK or perform an operation from the options list.

## Message Settings

1. Select **Messaging > Settings > Text and picture messaging**.
2. Set the parameters related to messages.

***NOTE:** Select **Messaging > Settings**. you can also change the settings of **Push message**, or **Common phrases**.*

## Setting Your Email Account

1. Select **Email > Email Wizard**.
2. Select **Options > Edit**. You can set the related account information. Or select **Options > Set as default** to activate this account.

***NOTE:** If there is no account in your phone, select **Add account** to create an account first.*

## Sending an Email

1. Select **Email > Create email** to access the email editing screen.
2. In the email editing screen:
  - Select **To** to enter reception.
  - Select **Subject** to edit the subject.
  - Select **Text Message** to edit the content.



## »» Viewing an Email

- Select **Options** to perform the operations of the options list.
3. In the email editing screen, select **Options > Send** to send the email.

## Viewing an Email

Your phone provides five mailboxes for Email. **Inbox** stores received emails. **Drafts** stores created and saved emails. **Outbox** stores the emails failed to be send. **Sent** stores sent emails. **Blocked** stores screened emails.

1. Select a mailbox from **Email**. Navigate between five mail-boxes through the scroll key.
2. Select an email and open via OK or perform an operation from the options list.

# 6. Entertainment

## Accessing the Internet

1. Select **Browser** to access the internet.
2. You can perform the following operations when browsing:
  - Opening the homepage
  - Enter a URL to access
  - Save or editing frequently visited websites
  - Browse saved web pages offline
  - Browse history web pages
  - Connect to the website accessed recently
  - Adjust browser settings

## Playing Music or Video

1. Select music files, video files, or playlists.
2. Press the OK key to play music or video.
3. During the playing of a file, you can perform the following operations:
  - Press the OK key to pause or resume the playing.
  - Follow the displayed prompts and use the scroll key to perform corresponding operations.

## »» Using Camera or Video Camera

- Select **Options** to perform the operations of the options list.
- Select **Exit** to exit from the player.

## Using Camera or Video Camera

1. In standby mode, press the camera key or select **Camera** to launch the camera.
2. In the viewfinder screen, you can:
  - Select **Options** to perform the operations of the options list.
  - Press the up or down scroll key to adjust the focus.
  - Press the left and right scroll key to adjust the brightness.
3. After taking a picture or recording a video clip, you can select **Options** to perform the operations of the options list.

## Games and Applications

You can install and run Java applications on your phone. For details, please refer to the help of the applications.

# 7. Connectivity

Select **Settings** > **Connectivity** or **Tools** > **Bluetooth**. You can set network access point, select data connection modes, or the Bluetooth, .

**NOTE:**

- *Your phone supports USB 2.0.*
- *Your phone supports plug and play function.*
- *The PC Assistant installation programme and USB driver are embedded on the mobile phone.*
- *The PC Options software supplied on your phone will run automatically after you connect your phone to the PC.*

## USB

You can synchronise data between your phone and PC, surf the Internet with your phone and read the memory card by USB cable.

**NOTE:**

- *To connect your phone with a PC through USB cable, first connect the USB connector to your phone, and then connect the other end of the cable to the PC.*
- *To disconnect your phone from the PC, first disable the PC Assistant, then disconnect the USB connector from the PC, and finally disconnect the USB cable from your phone.*

- *If the PC cannot recognise your phone when connecting through the USB cable, power off and restart the PC and then retry.*
- *Please do not plug the USB cable in and out of your phone frequently.*

## USB-Based Synchronization

1. Connect your phone with a PC through USB cable delivered with your phone.
2. The USB driver is embedded on your phone, and will be installed automatically.
  - If the **Found new hardware wizard** is shown, select **Cancel**.  
**Note:** this may happen more than once.
  - If asked to restart the PC, select **NO**.
3. The *PC Options* software supplied on your phone will run automatically. Wait for the dialog box to appear (this may take up to 30 seconds). Buttons showing **File Transfer**, **PC Assistant** and **Activate Dial-up networking** should be displayed.
4. Select the **PC Assistant** button, and follow the guide to complete the PC assistant installation for the first time.
5. You may be asked to restart the PC. This time, select **Yes**.
6. After restarting the PC, run the *PC Assistant* software on your PC. Now you can operate the USB based synchronization. For details of the operation, refer to the Help of the *PC Assistant*.

**NOTE:** If the dialog box does not appear in step 3, please confirm the auto-play function of the PC is activated, and then reconnect the cable to the phone and then the PC. The dialog box should appear after this activity. If the dialog box still does not appear, please disconnect and reconnect the cable as above using a different USB port on the PC. Once the dialog box appears, continue from step 4.

## USB-Based Internet Access

To access the Internet by USB, make sure that your PC supports the USB function and your SIM card supports the Internet access service. You may need the username and the password. For details, please contact your service provider.

1. Connect your phone with a PC through USB cable delivered with your phone.
2. Wait for the dialog box to appear (this may take up to 30 seconds). Buttons showing **File Transfer**, **PC Assistant** and **Activate Dial-up networking** should be displayed.
3. Select the **Activate Dial-up networking** button and follow the guide to complete the installation for the first time.
4. When this has finished, wait for the application to be configured. The *Dialup* software will run automatically.
5. For later start of *Dialup* software, please run the Dialup software on the PC.

**NOTE:**

- *Only Windows 2000, Windows XP and Windows Vista are supported.*
- *You can also use the built-in Internet wizard of the Windows operating system to access the internet.*

## microSD Card Reader

**NOTE:** *The function of microSD card reader and the other functions using the USB cable are incompatible. If you enable the microSD card reader, other functions using the USB cable are unavailable.*

1. Insert the microSD card to your phone.
2. Connect your phone to the PC by using the USB cable.
3. **Found New Hardware** and a device icon are displayed at the notification area of your PC.
4. The *PC Options* software supplied on your phone will run automatically. And then select **File Transfer**.
5. An icon for the mobile memory drive appears on your PC. Then you can read the files saved in the microSD card directly.
6. After reading the files, right-click on the device icon at the notification area of your PC to delete the device on your PC.

## Bluetooth®

You may use the built-in Bluetooth function of your phone to synchronize data between a PC and your phone, or use the built-in modem of your phone to access the Internet with a PC, or exchange data with other Bluetooth devices. You can also talk by using the Bluetooth headset or Bluetooth loudspeaker.

### **NOTE:**

- *The Bluetooth function supported by your Phone meets the requirements of Bluetooth Specification 2.0. It can work successfully only if you use it with compatible Bluetooth devices. For more information, refer to the user manuals of related devices, or consult the manufacturer of related devices.*
- *You can select **Tools > Bluetooth > Settings > Discoverable** to set whether your phone can be found by other devices when the Bluetooth function is enabled.*

## **Bluetooth-Based Synchronization**

Your phone can respond to data synchronization requests from a PC. To operate the Bluetooth synchronization with your phone, your PC needs to support Bluetooth function.



## »» Bluetooth®

1. Install the *PC Assistant* supplied on your phone.
2. Select ***Tools > Bluetooth > Switch on Bluetooth*** to enable the Bluetooth function.
3. Run the driver software for Bluetooth on the PC, and pair the phone. After the PC detects and recognizes the phone serial port service, activate the Bluetooth serial port service on the phone.
4. Run the *PC Assistant* software on the PC.
5. You can now operate the synchronization. For details of the operation, refer to the Help of the *PC Assistant*.

## Bluetooth-Based Data Transfer

You can exchange data between your Bluetooth phone and other Bluetooth devices. If you want to exchange data between your phone and another device, the partner device must support Bluetooth and the Bluetooth function must be enabled.

1. Select ***Tools > Bluetooth > Switch on BLuetooth*** to enable the Bluetooth function.
2. Select ***Tools > Bluetooth > Search for devices*** to search a Bluetooth device. When the Bluetooth device is found for the first time, authentication is required..

Now you can exchange data between your phone and the other Bluetooth device.

## Using Bluetooth Headset

You can answer a call by a Bluetooth headset or Bluetooth loudspeaker. For details, refer to the corresponding user manual of a Bluetooth headset or loudspeaker.

1. Set the Bluetooth headset to the status for detecting.
2. Select **Tools > Bluetooth > Switch on Bluetooth** to enable the Bluetooth function.
3. Select **Tools > Bluetooth > Search for devices** to search a Bluetooth device. When a Bluetooth device is found for the first time, authentication is required.
4. If a Bluetooth headset is detected and recognized for the first time, it should be authenticated by a pass code.

Now you can use the Bluetooth headset as the connection has been established between your phone and the Bluetooth headset.

The Bluetooth headset should be set to the status for detecting only when authentication is needed. Once the headset has been authenticated, you just need to turn on your Bluetooth headset. For more information, refer to the user manual of your Bluetooth headset.

**NOTE:** *The procedure for using a Bluetooth loudspeaker is similar to that for a Bluetooth headset. For details, refer to the user manual supplied with your Bluetooth loudspeaker.*

# 8. Organizer

## Managing files

You can manage the pictures, ringtones, music, videos, and other files conveniently. Select a file, then select Options to perform the operations of the list.

1. Select **My files** > Desired item.
2. Select **Options** to perform the operations of the list.

When your phone finds the memory card, the memory card tab is automatically displayed on the folder screen. Select the required files in the memory card and perform operations as required. In addition, you can also format the memory card.

## Viewing the Calendar

1. Select **Tools** > **Calendar**, and then select the desired date.
2. Press the OK key to view the reminder.
3. Select **Options** to create a reminder, set the view mode, jump to a date, synchronize data, view undone reminders, and search the calendar.

## Creating a Note

Select **Tools > Memo > Create memo** to create a new note.

1. Select **Memo** and select a note.
2. Click **Options** to edit, send or delete the note.

## Creating an Alarm

1. Select **Tools > Alarms** to set an alarm.
2. You can select an alarm from the alarm list, and then select the corresponding option to activate or deactivate the alarm.
3. When it is time for an alarm clock to ring, the selected alarm tone is played and a prompt is displayed. You can stop the ringing or snooze the alarm.

***NOTE:** If your phone is powered off, the alarm clock will still ring. When the alarm rings, you can choose to power on the phone.*

## Synchronizing Data

You can synchronize information between your phone and the server through the wireless network. The information that can be synchronized includes the contacts and the calendar. This service requires network support. For details, consult your service provider.

## »» Using Other Tools

1. Select **Tools > Synchronise**.
2. Press scroll keys to switch among **Synchronise**, **Settings**, and **Log**.
  - **Synchronise:** You can synchronize **Contacts**, **Reminders**.
  - **Settings:** You can connect to the server or set the synchronization direction.
  - **Log:** You can view logs.

***NOTE:** This service is not available in all networks. For details, contact your local customer care centre.*

## Using Other Tools

Your phone also provides **Calculator**, **Converter**, **Voice recorder**, **World time**, **Stopwatch**, **Timer**, and **Service dial number**.

# 9 Warnings and Precautions

This section contains important information pertaining to the operating instructions of your device. It also contains information about how to use the device safely. Read this information carefully before using your device.

## Electronic Device

Power off your device if using the device is prohibited. Do not use the device when using the device causes danger or interference with electronic devices.

## Medical Device

- Follow rules and regulations set forth by hospitals and health care facilities. Do not use your device when using the device is prohibited.
- Pacemaker manufacturers recommend that a minimum distance of 15 cm be maintained between a device and a pacemaker to prevent potential interference with the pacemaker. If you are using a pacemaker, use the device on the opposite side of the pacemaker and do not carry the device in your front pocket.
- Some wireless devices may affect the performance of hearing aids. For any such problems, consult your service provider.

## Potentially Explosive Atmosphere

Power off your device in any area with a potentially explosive atmosphere, and comply with all signs and instructions. Areas that may have potentially explosive atmospheres include the areas where you would normally be advised to turn off your vehicle engine. Triggering of sparks in such areas could cause an explosion or a fire, resulting in bodily injuries or even deaths. Do not power on your device at refueling points such as service stations. Comply with restrictions on the use of radio equipment in fuel depots, storage, and distribution areas, and chemical plants. In addition, adhere to restrictions in areas where blasting operations are in progress. Before using the device, watch out for areas that have potentially explosive atmospheres that are often, but not always, clearly marked. Such locations include areas below the deck on boats, chemical transfer or storage facilities, and areas where the air contains chemicals or particles such as grain, dust, or metal powders. Ask the manufacturers of vehicles using liquefied petroleum gas (such as propane or butane) whether this device can be safely used in their vicinity.

## Traffic Security

Observe local laws and regulations while using the device. In addition, if using the device while driving a vehicle, comply with the following guidelines:

- Concentrate on driving. Your first responsibility is to drive safely.
- Do not talk on the device while driving. Use hands-free accessories.
- When you have to make or answer a call, park the vehicle at the road side before using your device.

## »» Warnings and Precautions

- RF signals may affect electronic systems of motor vehicles. For more information, consult the vehicle manufacturer.
- In a motor vehicle, do not place the device over the air bag or in the air bag deployment area. Otherwise, the device may hurt you owing to the strong force when the air bag inflates.
- Do not use your device while flying in an aircraft. Power off your device before boarding an aircraft. Using wireless devices in an aircraft may cause danger to the operation of the aircraft and disrupt the wireless telephone network. It may also be considered illegal.

## Operating Environment

- Do not use or charge the device in dusty, damp, and dirty places or places with magnetic fields. Otherwise, it may result in a malfunction of the circuit.
- The device complies with the RF specifications when the device is used near your ear or at a distance of 1.5 cm from your body. Ensure that the device accessories such as a device case and a device holster are not composed of metal components. Keep your device 1.5 cm away from your body to meet the requirement earlier mentioned.
- On a stormy day with thunder, do not use your device when it is being charged, to prevent any danger caused by lightning.
- When you are on a call, do not touch the antenna. Touching the antenna affects the call quality and results in increase in power consumption. As a result, the talk time and the standby time are reduced.



- While using the device, observe the local laws and regulations, and respect others' privacy and legal rights.
- Keep the ambient temperature between -10 °C and 45 °C while the device is being charged. Keep the ambient temperature between -10 °C to 55 °C for using the device powered by a battery.

## Prevention of Hearing Damage

Using a headset at high volume can damage your hearing. To reduce the risk of damage to hearing, lower the headset volume to a safe and comfortable level.

## Safety of Children

Comply with all precautions with regard to children's safety. Letting the child play with your device or its accessories, which may include parts that can be detached from the device, may be dangerous, as it may present a choking hazard. Ensure that small children are kept away from the device and accessories.

## Accessories

Use the accessories delivered only by the manufacturer. Using accessories of other manufacturers or vendors with this device model may invalidate any approval or warranty applicable to the device, result in the non-operation of the device, and cause danger.

## Battery and Charger

- Unplug the charger from the electrical plug and the device when not in use.
- The battery can be charged and discharged hundreds of times before it eventually wears out. When the standby time and the talk time are shorter than the normal time, replace the battery.
- Use the AC power supply defined in the specifications of the charger. An improper power voltage may cause a fire or a malfunction of the charger.
- Do not connect two poles of the battery with conductors, such as metal materials, keys, or jewelries. Otherwise, the battery may be short-circuited and may cause injuries and burns on your body.
- Do not disassemble the battery or solder the battery poles. Otherwise, it may lead to electrolyte leakage, overheating, fire, or explosion.
- If battery electrolyte leaks out, ensure that the electrolyte does not touch your skin and eyes. When the electrolyte touches your skin or splashes into your eyes, wash your eyes with clean water immediately and consult a doctor.
- If there is a case of battery deformation, color change, or abnormal heating while you charge or store the battery, remove the battery immediately and stop using it. Otherwise, it may lead to battery leakage, overheating, explosion, or fire.
- If the power cable is damaged (for example, the cord is exposed or broken), or the plug loosens, stop using the cable at once. Otherwise, it may lead to an electric shock, a short circuit of the charger, or a fire.

- Do not dispose of batteries in fire as they may explode. Batteries may also explode if damaged.

## Cleaning and Maintenance

- The device, battery, and charger are not water-resistant. Keep them dry. Protect the device, battery, and charger from water or vapor. Do not touch the device or the charger with a wet hand. Otherwise, it may lead to a short circuit, a malfunction of the device, and an electric shock to the user.
- Do not place your device, battery, and charger in places where they can get damaged because of collision. Otherwise, it may lead to battery leakage, device malfunction, overheating, fire, or explosion.
- Do not place magnetic storage media such as magnetic cards and floppy disks near the device. Radiation from the device may erase the information stored on them.
- Do not leave your device, battery, and charger in a place with an extreme high or low temperature. Otherwise, they may not function properly and may lead to a fire or an explosion. When the temperature is lower than 0°C, performance of the battery is affected.
- Do not place sharp metal objects such as pins near the earpiece. The earpiece may attract these objects and hurt you when you are using the device.
- Before you clean or maintain the device, power off the device and disconnect it from the charger.
- Do not use any chemical detergent, powder, or other chemical agents (such as alcohol and benzene) to clean the device and the charger.

## »» Warnings and Precautions

Otherwise, parts of the device may be damaged or a fire can be caused. You can clean the device and the charger with a piece of damp and soft antistatic cloth.

- Do not dismantle the device or accessories. Otherwise, the warranty on the device and accessories is invalid and the manufacturer is not liable to pay for the damage.

## Emergency Call

You can use your device for emergency calls in the service area. The connection, however, cannot be guaranteed in all conditions. You should not rely solely on the device for essential communications.

## Certification Information (SAR)

This mobile device meets guidelines for exposure to radio waves.

Your device is a low-power radio transmitter and receiver. As recommended by international guidelines, the mobile device is designed not to exceed the limits for exposure to radio waves. These guidelines were developed by the independent scientific organization International Commission on Non-Ionizing Radiation Protection (ICNIRP) and include safety measures designed to ensure safety for all users, regardless of age and health.

The Specific Absorption Rate (SAR) is the unit of measurement for the amount of radio frequency energy absorbed by the body when using a device. The SAR value is determined at the highest certified power level in laboratory conditions, but the actual SAR level of the device when being

operated can be well below the value. This is because the device is designed to use the minimum power required to reach the network.

The SAR limit adopted by the USA and Canada is 1.6 watts/kilogram (W/kg) averaged over one gram of tissue. The highest SAR value reported to the FCC and IC for this device type when tested for use at the ear is 0.323 W/kg, and when properly worn on the body is 0.489 W/kg.

The SAR limit also adopted by Europe is 2.0 W/kg averaged over 10 grams of tissue. The highest SAR value for this device type when tested at the ear is 0.693 W/kg, and when properly worn on the body is 1.040 W/kg.

## FCC Statement

This equipment has been tested and found to comply with the limits for a Class B digital device, pursuant to Part 15 of the FCC Rules. These limits are designed to provide reasonable protection against harmful interference in a residential installation. This equipment generates, uses and can radiate radio frequency energy and, if not installed and used in accordance with the instructions, may cause harmful interference to radio communications. However, there is no guarantee that interference will not occur in a particular installation. If this equipment does cause harmful interference to radio or television reception, which can be determined by turning the equipment off and on, the user is encouraged to try to correct the interference by one or more of the following measures:

- Reorient or relocate the receiving antenna.
- Increase the separation between the equipment and receiver.
- Connect the equipment into an outlet on a circuit different from that to which the receiver is connected.

## »» Warnings and Precautions

- Consult the dealer or an experienced radio/TV technician for help.

This device complies with part 15 of the FCC Rules. Operation is subject to the following two conditions: (1) This device may not cause harmful interference, and (2) this device must accept any interference received, including interference that may cause undesired operation.

Warning: Changes or modifications made to this device not expressly approved by Huawei Technologies Co., Ltd. may void the FCC authorization to operate this device.

## Disposal and Recycling Information



This symbol on the device (and any included batteries) indicates that they should not be disposed of as normal household garbage. Do not dispose of your device or batteries as unsorted municipal waste. The device (and any batteries) should be handed over to a certified collection point for recycling or proper disposal at the end of their life.

For more detailed information about the recycling of the device or batteries, contact your local city office, the household waste disposal service, or the retail store where you purchased this device.

The disposal of this device is subject to the Waste from Electrical and Electronic Equipment (WEEE) directive of the European Union. The reason for separating WEEE and batteries from other waste is to minimize the potential environmental impacts on human health of any hazardous substances that may be present.

## EU Regulatory Conformance

Hereby, Huawei Technologies Co., Ltd., declares that this device is in compliance with the essential requirements and other relevant provisions of Directive 1999/5/EC.

The declaration of conformity may be consulted at [www.huaweidevice.com/certification](http://www.huaweidevice.com/certification).

**CE 0682**

Please observe the national local regulations in the location where product is to be used. This product may be restricted for use in some or all countries of European Union.