

Make the most of now.

Vodafone 735 Mobile Phone

User Guide

Notice

Copyright © 2009 Huawei Technologies Co. Ltd.,

All Rights Reserved

Your phone is made exclusively for Vodafone by Huawei Technologies.

No part of this manual may be reproduced or transmitted in any form or by any means without prior written consent of Huawei Technologies Co. Ltd.,

Trademarks

VODAFONE, the Vodafone logos are trade marks of the Vodafone Group. Other product and company names mentioned herein may be trade marks of their respective owners.

Notice

The information in this manual is subject to change without notice. Every effort has been made in the preparation of this manual to ensure accuracy of the contents, but all statements, information, and recommendations in this manual do not constitute a warranty of any kind, expressed or implied.

Read the safety precautions and safety informations carefully to ensure that you use wireless device in a correct and safe manner.

Huawei Technologies Co. Ltd.,

Branch Address:

Huawei Technologies Deutschland GmbH, Am Seestern 24, Düsseldorf,
Germany

Postal Code: 40547

Head Office Address:

Administration Building, Huawei Technologies Co. Ltd., Bantian, Longgang
District, Shenzhen, P. R. China

Postal Code: 518129

Website: <http://www.huawei.com>

Safety Precautions



Read the Safety Information section of this user guide on page 43.



Do not use while re-fuelling



Do not use hand-held while driving



This device may produce a bright or flashing light



For body-worn operation maintain a separation of 1.5 cm



Do not dispose of in a fire



Small parts may cause a choking hazard



Avoid contact with magnetic media



This device may produce a loud sound



Avoid Extreme Temperatures



Keep away from pacemakers and other personal medical devices



Avoid contact with liquid, keep dry



Switch off when
instructed in hospitals
and medical facilities



Do not try to
disassemble



Switch off when
instructed in aircrafts
and airports



Do not rely on this
device for emergency
communications



Switch off in explosive
environments



Only use approved
accessories

Contents

1.Introduction

Packing List	1
Your Phone	2
Security	10
Text Input	11

2.Customized Settings

Phone Settings	14
Display Settings	15
Network Settings	15

3.Call Function

Managing Contacts	16
Viewing the Call Records	18
Setting the Call Function	18
Making or Ending a Call	20
Answering or Rejecting a Call	22

4.Message Function

Message	23
Email	24

5.Connection Function

Connectivity Settings	26
USB	28
Bluetooth®	30

6.Entertainment Function

Music	35
Camera	35
Web	36
Mobile TV	37
Video	37
Games	37

7.Business Function

Calendar Management	38
Tool Applications	39
File Management	41
Application	41

8.Safety Information

RF Exposure	43
Distraction	46
Product Handling	47
Electrical Safety	50
Interference	51
Explosive environments	53
Environmental Protection	54

9.Appendix

Abbreviations	55
File Formats	56

1. Introduction

Your Phone can operate in virtually all countries, automatically switching between WCDMA 2100 and GSM/GPRS/EDGE 900/1800/1900 networks.

NOTE: *The services supported by your phone should be also supported by the network from where you use the phone. For details, contact your local Vodafone customer care centre. Note that you can also access information on Vodafone services at www.vodafone.com.*

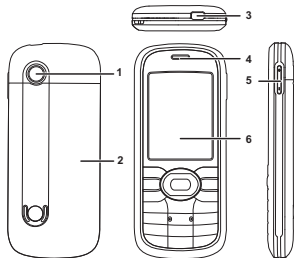
Packing List

Your phone package box contains the following:

1. One mobile phone
2. One charger connector
3. One Li-ion battery
4. One User Guide
5. One Quick Start Guide
6. One Stereo headset (Optional)
7. One USB cable

Your Phone

Appearance



1. Camera

2. Battery cover

3. Charger connector

/ Cable connector / Headset Jack

4. Earpiece

5. Volume keys

6. Screen

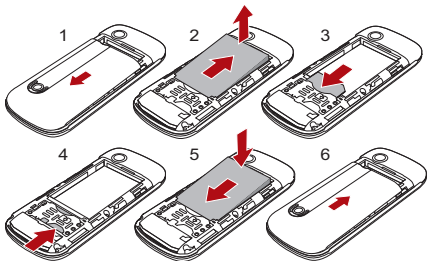
SIM Card and Memory Card

Load your SIM card before using your phone. And only unload the SIM card and the battery after power off your phone. To use the SIM card properly, please read the following instructions carefully.

NOTE:

- *Keep the SIM card out of the reach of children.*
- *The SIM card and its metal contacts can be easily damaged by scratching or bending. Ensure care when you carry, load or remove it.*
- *Always disconnect the charger from the phone before loading or removing the SIM card.*

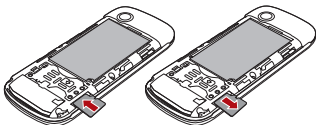
To load or remove the SIM card, please according to the following figures.



»» Your Phone

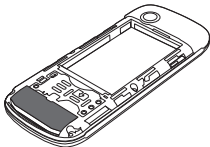
Your phone supports a memory card (microSD) with a capacity up to 8 GB.

To load or remove the memory card, please remove the battery cover. And then please according to the following figure.



Antenna

As with any radio transmitting device, avoid touching an antenna unnecessarily when the antenna is in use. For example, avoid touching the cellular antenna during a phone call. Contact with a transmitting or receiving antenna affects the quality of the radio communication, may cause the device to operate at a higher power level than otherwise needed, and may reduce the battery life. The picture shows the antenna area marked in grey.



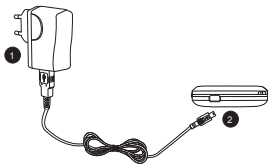
Charging the Battery

NOTE:

- *When you charge the battery for the first time, please charge it for a minimum of 12 hours.*
- *The battery discharges even while not being used. If you have not used it for a long time, please recharge it first.*
- *The charging time depends on the environmental temperature and the age of the battery.*
- *Do not strike, throw or cause any kind of violent shock to the battery, otherwise liquid leakage, body damage, overheating, fire or explosion may occur.*
- *The battery can be recharged but eventually wears out. If the battery lasts for a shorter time period than usual after being charged normally, replace it with a battery of the same type.*
- *Charge the battery by using the charger connector and the USB cable supplied with your phone.*

Before charging the battery, ensure that the battery has been properly loaded into your phone.

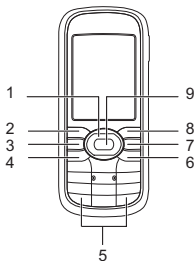
To charge the battery, first plug in the charger connector to a power socket, and then insert the plug of the cable into the connector of the phone as shown in the following figure.



NOTE:

- ***The plug of the cable is in trapezium shape. Reversely inserting the plug may damage the mobile phone and the charger. The connection methods of USB cable and headset are the same as the charger.***
- *When the battery power level is very low, the phone makes alert sounds and displays a prompt. When the battery power level is too low, the phone will power off automatically.*
- *When the battery is being charged, the charging indicator blinks continuously. When the charging indicator stops blinking, it indicates that the battery is full.*

Keys



- | | |
|----------------------|---|
| 1. Scroll key | <ul style="list-style-type: none"> • Scroll through a menu. • Access the corresponding shortcut menu in standby mode. |
| 2. Left function key | <ul style="list-style-type: none"> • Activate the function indicated at the left of the prompt bar. • Access the main menu in standby mode. |
| 3. Send key | <ul style="list-style-type: none"> • Make or Answer a call. • Enter the Calls screen in standby mode. |
| 4. Music key | Access the music menu in standby mode. |
| 5. Number keys | Enter numbers or characters. |

»» Your Phone

- | | |
|-----------------------|---|
| 6. Clear key | Delete a character before the cursor. |
| 7. Power/End key | <ul style="list-style-type: none">• End an ongoing call or reject an incoming call.• Return to the standby mode.• Press and hold it to power on or power off the phone. |
| 8. Right function key | <ul style="list-style-type: none">• Activate the function indicated at the right of the prompt bar.• Access Vodafone live! in standby mode. |
| 9. OK key | <ul style="list-style-type: none">• Start the selected function in the menu.• Access the main menu in standby mode. |

Screen



1. Icon bar

2. Desktop

3. Prompt bar

The icon bar displays the phone status. The following table illustrates the icons that may appear on this bar.



Indicates signal strength.



The normal profile is activated.



Indicates power level of the battery.



The headset is plugged in.



The phone is currently in a GSM or WCDMA network.



Your PC connects to the Internet through your phone.



You are using the roaming service.



You have new text messages.



Bluetooth is enabled.



You have new voice mails.



Call line 2 is enabled currently.



You have new multimedia messages.

»» Security



Forwarding all incoming voice calls to line 1 or line 2.



You have new PUSH messages.



Alarm clock is enabled.



You have new Emails.



The phone is in a call.

Security

Phone/SIM Card Security Settings

NOTE:

- For certain SIM cards, you need to enter the PIN2 code to use certain special functions.
- If you enter a wrong PIN code or wrong PIN2 code for three consecutive attempts, the SIM card is locked. To unlock the SIM card, enter the PIN Unlocking Key (PUK) code or PUK2 code.
- The PIN code, PIN2 code, PUK code, or PUK2 code is provided together with the SIM card. For details, consult your service provider.
- The initial phone password of the phone is **0000**.

Select **Settings > Security**.

- Reset your phone to the factory settings.

- Enable or disable the "Phone lock" and "PIN lock".
- Modify the phone password and PIN code.
- If your SIM card supports the Fixed Dialer Number (FDN) function, you can set the limit for phone numbers.

Digital Rights Management

Select **Settings > License setting**. Enter the correct phone password and press OK key to confirm, and you can select roaming network or delete all licenses.

Digital Rights Management (DRM) can protect the digital content from piracy and protect the provider's interests. The digital content includes Java applications and multimedia content such as images, audio and video. If the protected content cannot be accessed, it indicates that the corresponding license is overdue or used up.

Text Input

NOTE: While entering text:

- Press the * key to switch between input methods. Press and hold the * key to enable or disable the T9 input mode.
- Press the # key to display the symbols list. Press and hold the # key to set the input language.
- Press the clear key to delete the letter before the cursor.
- Press repeatedly the * key and you will see "Abc", "abc", "ABC" or "123" on the upper left corner of the screen successively. It indicates the

»» Text Input

words to be entered will be in lower case, first letter capitalized or in upper case.

T9[®] Input Method

With the T9 input method, you can easily and quickly enter words. T9 is a predictive text entry mode. Press the relevant key that corresponds to the desired letter and T9 will offer you candidate words.

Press each key carrying the desired letter once, and then the predictive text scheme will present the candidate words composed by the letters you have entered in the drop-down menu.

Traditional Input Method

When T9 input method is off, you can use the traditional input method for entering alphabetic characters. Repeatedly press the key that carries the letter to be entered when it appears on the screen.

Number Input Method

In a text editing screen, press and hold the character/number keys to enter corresponding numeric characters.

You can also press successively the * key to switch to the "123" numeric input method, and enter corresponding numeric characters by pressing the character/number keys.

Symbol Input Method

You can press the # key to display the symbols list and then select symbols to input.

You can also press the key with number 1 to input the commonly-used symbols in a text editing screen (except numeric input method).

2. Customized Settings

Phone Settings

Select **Settings > Phone Settings**. You can change the settings of the phone.

- Set the system date and time format of the phone. If you have removed the battery from the mobile phone, you may need set the time after power on the mobile phone.
- Select different profiles for the phone to suit different environmental situations.
- Set the phone language. You can select **Auto**. This option is used to set the phone language to be the same as that used in your SIM card.
- Set the language used to enter text.
- Change the sound settings for the current profile.
- Set the keypad tone of the phone.
- Set the keypad lock period. If there is no operation on the phone within a preset period of time, the keypad is locked automatically. You can press OK key, and then press * key to unlock the keypad.
- Assign the frequently used functions to the scroll keys as shortcut keys.
- Set your phone to power on or off automatically.

NOTE: *In the standby mode, you can press and hold the # key to switch the current profile to the silent profile. If the current profile is offline profile, you cannot use this function.*

Display Settings

Select **Settings** > **Display Settings**. You can change the settings for the phone display.

- Set the wallpaper layout for the home screen.
- Set the theme of the phone.
- Set the brightness of the screen.
- Turn the keypad backlight on or off.
- Set the backlight delay time for the screen.
- Enter a greeting message that appears on the screen when you power on your phone.
- Enter a message that appears on the screen when you power off your phone.

Network Settings

Select **Settings** > **Network**. You can change the settings for the network. Four options are available: **Mode**, **Select network**, **Cell information**, and **Operator list**.

3. Call Function

Managing Contacts

Creating a Contact

To add a new contact, perform one of the following operations:

- Enter a number in standby mode, and then select **Options > Save number**.
- Select **Contacts > Add new contact**.
- Select an item from **Calls** screen, and then select **Options > Save number**.

Searching for a Contact

You can find a contact from the contacts list easily and quickly by using this function on the **Contacts** screen. Select **Options > Advanced > Search contacts**, and then enter the contact name you are searching for. The contact is displayed.

You can also use quick search in the contacts list screen. You can find a contact by entering the initials of the first name or the last name of the contact.

Managing a Group

In the **Contacts** screen, press the left or right scroll key to select **Groups**. And then select a group:

- Select **Options** for the following options: **Details, Rename, Send Message, Set ringtone** and **Remove all members**.
- Press OK key to view the details. And then select **Add** or select **Options > Add contact** to add a contact into the group. To delete a group member, select a member from the group member list, and then select **Options > Remove**.

Other Operations

In the Contacts screen, select **Options** for the following operations.

- View the detailed information of the contact.
- Make a voice call or a video call.
- Send a message or Email to the selected contact.
- Send a contact to other devices supporting message or bluetooth.
- Create a new contact.
- Delete the selected contact.
- Mark or unmark a record or all records in your phone and SIM card.
- Access the advanced options.
- Set the default contact list displayed in the contact screen, to sort the contacts on the **Contacts** screen. You can also select **Settings > Contact Settings** to set these items.
- View the memory status of both your phone and SIM card.

Viewing the Call Records

Select **Calls** in the main menu and then press the left or right scroll key to select **All calls**, **Missed**, **Received** or **Dialed**. Then select **Options** for the following operations.

- Send a message or MMS.
- Save the number of the selected record.
- Make a voice call or a video call.
- Delete the selected record.
- Mark or unmark a record or all records.
- Set the display mode of all records or view calls status.

Setting the Call Function

General Settings

Select **Settings** > **Call settings**. You can change the settings for making calls.

NOTE:

- *The old call barring password is provided by your network operator if it is the first time for you to change the password.*
- *The call forwarding, barring and waiting function is network-dependent. For more information, contact your local Vodafone customer care centre.*

- **Call forwarding:** This option is used to forward incoming calls. You can set the forwarding condition and the forwarding type.
- **Call barring:** This option is used to set the call barring mode for the phone. You can set the barring condition and the barring type. You can also change the password for call barring.
- **Call waiting:** This option is used to enable or disable the call waiting function.
- **Save unknown number:** This function is used to prompt whether to save the number after a call ends.
- **Auto redial:** This function is used to auto redial the dialed number if the dialing failed.
- **Answer mode:** It is used to set the mode for answering an incoming call. Two options are available: **Any key** and **Send key**.
- **Auto Answer:** This option is used to select auto answering for incoming calls. Four options are available: **Immediate answer**, **Text message**, **Recorded voice** and **Disable**.
- **Caller ID:** This options allows you to select whether to display your phone number on the phone of the party who you called. If select **Auto**, whether your phone number will be shown on the called phone depends on the network.
- **Select line:** This option is used to set the call line for your phone. Two options are available: **Line 1** and **Line 2**.
- **My number:** This function can be used to save your own phone numbers on the SIM card. You can select **Options** to edit or delete the records.

Video Call Settings

You can change the settings for the video call function.

- **Picture mode:** Set the picture mode during a video call.
- **Image quality:** Set the image quality for video.
- **Switch Camera off:** Open or close the video channel during a video call.
- **Audio off:** Open or close the audio channel during a video call.
- **Auto voice call:** Enable the auto voice call function. The phone auto makes a voice call, when the other party's phone does not support the video call service.
- **Send image:** Select a file and send it to the other party when you hold a video call.
- **Auto answer:** Auto answer an incoming video call. You can enable or disable this function.

Making or Ending a Call

***NOTE:** In the 3G network, you can make video calls, provided that the called party has a device supporting the video call function.*

1. Enter a number or select a contact. Press the send key to make a voice call, or press the music key to make a video call. You can also select **Options** to make a voice call or video call.

- You can make a voice call through speed dialing. Select **Contacts > Options > Advanced > Speed dial number** to set the speed dialing number (SDN). To make a call by SDN, press and hold the number key until the phone dials the corresponding phone number in standby mode.
2. During a call, you can select **Options** to perform operations in the option list.
 - During a voice call, enter the number of a third party. Then press the send key to make a three-way call. Select **Options > Conference call / Private call** to switch between conference call or private conversation.
 - During a video call, press the send key to hold the call and send a preset file to the other party. You can press the send key again to resume the call. Before you use the function, you can preset a file in **Settings > Video call > Send image**.
 - During a video call, press the up or down scroll key to adjust the brightness, press the left or right scroll key to zoom in or zoom out, press the volume keys to adjust the volume, press OK key to switch between the loudspeaker mode and the earpiece mode.
 3. Press the end key to terminate the call.

Answering or Rejecting a Call

1. Answer a call according to the different answer modes.
 - If the answer mode is **Any key**, press any key except the end key.
 - If the answer mode is **Send key**, press the send key.
 - If the headset is in use, press the control key on the headset.
2. Press the end key or select **Options > Reject** to reject a call.

4. Message Function

Message

The screen displays the number of words or bytes of a message. If the number exceeds the maximum, a message is sent as a series of two or more messages.

Message Settings

1. Select **Messaging > Settings > SMS & MMS**.
2. Set the parameters related to messages.

***NOTE:** Select **Messaging > Settings**. You can also change the settings of **Push message, Broadcast** or **Common phrases**.*

Sending a Message

1. Select **Messaging > Create message** to access the message editing screen.
2. During editing a message:
 - You can press down scroll key to add attachment files.
 - You can select **Options** to perform operations in the option list.
3. After editing the message, press OK key to add a recipient's number.
4. Press OK key to send the message.

***NOTE:** Select **Messaging > Templates**. You can create the message template.*

Viewing a Message

Your phone provides four mailboxes for message. **Inbox** stores received messages. **Drafts** stores created and saved messages. **Outbox** stores the messages that failed to be sent. **Sent** stores sent messages.

1. Select a mailbox from **Messaging**. And then switch between four mailboxes and templates through the scroll key.
2. Select a message, and then select **Options** to perform the operations of the option list.

***NOTE:** If your phone is enabled with the broadcast function, select **Messaging > Broadcast Inbox** to view broadcast messages.*

Email

Email Settings

1. Select **Email > Email Wizard** or **Settings > Message settings > Email** and select an account.
2. Select **Options > Edit**. You can set the related account information. Or select **Options > Set as default** to activate this account.
3. After completing all settings, press OK key or select **Options > Select** to enter the user name and password.

Sending an Email

1. Select **Email > Create Email** to access the email editing screen.
2. Select **To** and press OK key. Enter recipient or add recipient from contacts.
3. In the email editing screen:
 - Select **Subject** to edit the contents.
 - Select **Text Message** to edit the content.
 - Select **Options** to perform the operations of the option list.
4. In the email editing screen, select **Options > Send** to send the email.

Viewing an Email

Your phone provides five mailboxes for Email. **Inbox** stores received emails. **Drafts** stores created and saved emails. **Outbox** stores the emails failed to be send. **Sent** stores sent emails. **Blocked** stores screened emails.

1. Select a mailboxes from **Email**. And then switch between five mailboxes through the scroll key.
2. Select an Email, and then select **Options** to perform the operations of the option list.

5. Connection Function

Connectivity Settings

Select **Settings** > **Connectivity**. You can set the Bluetooth, network access point or select data connection modes.

NOTE:

- *Your phone supports USB 2.0.*
- *Your phone supports plug and play function.*
- *The PC assistant installation programme and USB driver are embedded in the mobile phone.*
- *The Vodafone PC Options software supplied on your phone will run automatically after you connect your phone to the PC.*

Installing the PC Assistant

NOTE:

- *To connect your phone with a PC through USB cable, first connect the USB connector to your phone, and then connect the other end of the cable to the PC. To disconnect your phone from the PC, first disable the Vodafone PC Assistant, then disconnect the USB connector from the PC, and finally disconnect the USB cable from your phone.*
- *If the PC cannot recognise your phone when connecting through the USB cable, power off and restart the PC and then retry.*
- *Please do not plug the USB cable in and out of your phone frequently.*

1. Connect your phone with a PC through USB cable delivered with your phone.
2. Select **Settings > Connectivity > Modem > Modem via USB**.
3. The USB driver is embedded in your phone, and will be installed automatically.
 - If the *Found new hardware wizard* is shown, select *Cancel*, this may happen more than once.
 - If asked to restart the PC, select *NO*.
4. The *Vodafone PC Options software* supplied on your phone will run automatically. Wait for the dialog box to appear (this may take up to 30 seconds). Buttons showing *PC Assistant* and *Vodafone Mobile Connect via the phone* should be displayed.
 - Select the *PC assistant* button, and follow the guide to complete the *PC assistant* installation for the first time.
5. When this has finished, wait for modem driver to appear in the modem list on your PC (this can be found by clicking on **Start > Control Panel > Phone and Modem Options > Modems**. "*Vodafone Mobile Adapter - Modem*" should appear). It may take up to 60 seconds for this to appear.
6. You may be asked to restart the PC. This time, select *Yes*.

NOTE: *If the dialog box does not appear in step 3, please confirm that the autoplay function of the PC is activated, and then reconnect the cable to*

the phone and then the PC. The dialog box should appear after this activity. If the dialog box still does not appear, please disconnect and reconnect the cable as above using a different USB port on the PC. Once the dialog box appears, continue from step 4.

After restarting the PC, you can synchronize data between your phone and PC, surf the Internet with your phone and read the memory card by USB cable. For details of the operation, refer to the help information in the *PC Assistant software*.

USB

USB-Based Synchronization

1. Connect your phone with a PC through USB cable delivered with your phone.
2. Select **Settings > Connectivity > Modem > Modem via USB**.
3. Install the *PC Assistant*.
4. Run the *PC Assistant software* on your PC to operate the USB based synchronization. For details of the operation, refer to the help information in the *PC Assistant software*.

USB-Based Internet Access

To access the Internet by USB, make sure that your PC supports the USB function and your SIM card supports the Internet access service. You need

the username and the password. For details, please contact your service provider.

1. Connect your phone with a PC through USB cable delivered with your phone.
2. Select **Settings > Connectivity > Modem > Modem via USB**.
3. There are two methods to access the internet by using the USB cable:
 - Install the *PC Assistant*. And use the *PC Assistant* supplied with your phone to load and run the *Vodafone Mobile Connect via the phone*. For details of the operation, refer to the help information in the *PC Assistant software*.
 - Use the built-in Internet wizard of the Windows operating system.

NOTE: *Only Windows 2000, Windows XP and Windows Vista are supported.*

microSD Card Reader

NOTE: *The function of microSD card reader and the other functions using the USB cable are incompatible. If you enable the microSD card reader, other functions using the USB cable are unavailable.*

1. Insert the microSD card to your phone.
2. Connect your phone to the PC by using the USB cable.
3. *Found New Hardware* and a device icon are displayed at the notification area of your PC.

»» Bluetooth®

4. The *Vodafone PC Options software* supplied on your phone will run automatically. And then select *File Transfer*.
5. An icon for the mobile memory drive appears on your PC. Then you can read the files saved in the microSD card directly.
6. After reading the files, right-click on the device icon at the notification area of your PC to delete the device on your PC.

Bluetooth®

You may use the built-in Bluetooth function of your phone to synchronize data between a PC and your phone, or use the built-in modem of your phone to access the Internet with a PC, or exchange data with other Bluetooth devices. You can also talk by using the Bluetooth headset or Bluetooth loudspeaker.

NOTE:

- *The Bluetooth function supported by your Phone meets the requirements of Bluetooth Specification 2.0. It can work successfully only if you use it with compatible Bluetooth devices. For more information, refer to the user manuals of related devices, or consult the manufacturer of related devices.*
- *You can select **Settings > Connectivity > Bluetooth > Visibility** to set whether your phone can be found by other devices when the Bluetooth function is enabled.*

Bluetooth-Based Synchronization

Your phone can respond to data synchronization requests from a PC. To operate the Bluetooth synchronization with your phone, your PC needs to support Bluetooth function.

1. Install the *PC Assistant*.
2. Select **Settings > Connectivity > Bluetooth > Switch On/Off > On** to enable the Bluetooth function.
3. Run the driver software for Bluetooth on the PC, and pair the phone. After the PC detects and recognizes the phone serial port service, activate the Bluetooth serial port service on the phone.
4. Run the *PC Assistant* on the PC.
5. You can now operate the synchronization. For details of the operation, refer to the help information in the *PC Assistant software*.

Bluetooth-Based Data Transfer

You can exchange data between your Bluetooth phone and other Bluetooth devices. If you want to exchange data between your phone and another device, that device must support Bluetooth and the Bluetooth function must be enabled.

1. Select **Settings > Connectivity > Bluetooth > Switch On/Off > On** to enable the Bluetooth function.

»» Bluetooth®

2. Select **Settings > Connectivity > Bluetooth > My devices**. Select **Search** to search a Bluetooth device. When the Bluetooth device is found for the first time, authentication is required.

Now you can exchange data between your phone and the other Bluetooth device.

Bluetooth-Based Internet Access

To access the Internet by Bluetooth, make sure that your PC supports the Bluetooth function and your SIM card supports the Internet access service.

To access the Internet, you need the username and the password. For details, please contact your service provider.

1. Select **Settings > Connectivity > Modem** to set the port to **Modem via Bluetooth**.
2. Select **Settings > Connectivity > Bluetooth > Switch On/Off > On** to enable the Bluetooth function.
3. Run the driver software for Bluetooth on the PC, and pair the phone. After the PC has detected the Vodafone dial-up network service, you can activate this service.
4. Then there are three methods to access the internet by using the Bluetooth function:
 - Install the *PC Assistant*. And use the *PC Assistant* supplied with your phone to load and run the *Vodafone Mobile Connect via the*

phone. For details of the operation, refer to the help information in the *PC Assistant software.*

- Use the built-in Internet wizard of the Windows operating system.
- Use the Internet wizard supplied with the Bluetooth drive suite of the PC.

NOTE: *Only Windows 2000, Windows XP and Windows Vista are supported.*

The Bluetooth Headset

You can answer a call by a Bluetooth headset or Bluetooth loudspeaker. For details, refer to the corresponding user manual of a Bluetooth headset or loudspeaker.

1. Set the Bluetooth headset to the status for detecting.
2. Select **Settings > Connectivity > Bluetooth > Switch On/Off > On** to enable the Bluetooth function.
3. Select **Settings > Connectivity > Bluetooth > My devices**. Select **Search** to search a Bluetooth device. When a Bluetooth device is found for the first time, authentication is required.
4. If a Bluetooth headset is detected and recognized for the first time, it should be authenticated by a PIN code.

Now you can use the Bluetooth headset as the connection has been established between your phone and the Bluetooth headset.

▶▶ Bluetooth®

The Bluetooth headset should be set to the status for detecting only when authentication is needed. Once the headset has been authenticated, you just need to turn on your Bluetooth headset. For more information, refer to the user manual of your Bluetooth headset.

***NOTE:** The procedure for using a Bluetooth loudspeaker is similar to that for a Bluetooth headset. For details, refer to the user manual supplied with your Bluetooth loudspeaker.*

6. Entertainment Function

***NOTE:** Select **Settings** > **Streaming settings**. You can change the settings for the streaming.*

Music

Select **Music**. You can play all music, play music according to artists, albums, and genre, set the play list, and view the latest play list.

During music playing, you can perform the following operations:

- Follow the displayed prompts and use the scroll key to perform corresponding operations.
- Select **Options** to perform the operations in the list.

Select **Music** > **FM Radio**. You can select **Options** to tune the channel or edit a channel list.

Camera

Select **Camera** to start the camera. In the camera viewfinder screen, press the right scroll key to switch to the video camera function.

Operations in the Viewfinder Screen

When the camera is started, you can press OK key to take a picture. Or press the right scroll key to switch to the video camera function (when the tool bar is closed). Then, you can press OK key to start recording the video.

In the viewfinder screen, you can:

- Press the up or down scroll key to adjust the brightness.
- Press the volume keys to adjust the focus.
- When the camera is started, press the right scroll key to switch to the video camera function (when the tool bar is closed).
- Select **Options** to display the tool bar or select **Back** to close the tool bar. This tool bar is used to set the parameters of the camera or the video camera.

Operations After Taking a Picture

After taking a picture, the picture taken are auto saved to the **My Files/Pictures** directory. Or you can select **Options** to perform the operations of the option list.

Operations During Recording

During the recording, you can perform the following operations.

- Pause and then to start recording again.
- Cancel the recording.

Web

The built-in browser makes it easy to browse the Vodafone live! portal. You can access the Vodafone live! by selecting **Web** from the main menu.

Mobile TV

Select **Entertainment > Mobile TV**. You can access the preset link. The link has been preset by Vodafone for you on the phone.

***NOTE:** Whether your phone supports this function depends on the local network. For details, please contact your local network operator.*

Video

Select **Entertainment > Video**. To download one of these to the phone or memory card, select **Download videos**.

Games

Select **Entertainment > Games**. To download one of these to the phone or memory card, select **Download Games**.

7. Business Function

Calendar Management

Using the Alarm Clock

Select **Organiser & Tools > Alarms**. You can select one alarm from the list, and then press OK key to set an alarm clock.

When it is time for an alarm clock to ring, the selected alarm tone is played and a prompt is displayed. You can stop the ringing and snooze by pressing any key (except left function key and power key).

If your phone is powered off, the alarm clock will still ring. When the alarm rings, you can choose to power on the phone.

Select an alarm clock from the list, and press the left function key to deactivate it.

Using the Calendar

Select **Organiser & Tools > Calendar**. You can select **Options > New** to create the schedule events for the current day. The schedule prompt is the same with alarm prompt. In the calendar view screen, you can select **Options > View** to view the events.

Creating a Task

Select **Organiser & Tools > Task**. To define a new task, press OK key or select **Options > New** on the **Tasks** screen. The task prompt is the same with alarm prompt.

Creating a Memo

Select **Organiser & Tools > Memo**. You can store important events on your phone.

Tool Applications

Synchronize

Select **Organiser & Tools > Synchronize**. You can synchronize contacts with your personal phone book in the Vodafone network. Before use the synchronize function, you may need to set a profile.

1. To create a profile, select **Options > New** to create a profile.
2. Press the left or right scroll key to switch between **Synchronize Items**, **Server Setting**, and **Network Profile**.
3. Return to the previous menu and select **Options > Synchronize** to start synchronizing.

***NOTE:** This service is not available in all networks. For details, contact your local Vodafone customer care centre.*

Other Tools

Select **Organiser & Tools**. You can use more tools.

Calculator

You can perform addition, subtraction, multiplication, division and extraction operations on your phone.

Unit Converter

You can convert units of length and weight between different systems on your phone.

Currency Converter

You can convert a value from one currency to another using your phone.

Voice Recorder

You can record voices or sounds on your phone.

World Time

You can view the time of important cities around the world.

Stopwatch

You can use the stop watch function.

Timer

You can set a timer for up to 99 hours and 59 minutes.

Service Dial Number

You can contact your local Vodafone customer care centre by dialing this number.

File Management

Select **My Files**. You can manage the **Pictures, Ringtones, Music, Videos, Themes,** and **Others** files conveniently. Select a file, then select **Options** to perform the operations of the list.

NOTE:

- *Some sound files are protected by Digital Rights Management (DRM), and may not be able to be used as a ringtone.*
- *When the phone detects and recognizes the memory card, **Memory card** is displayed as a tab on the **My Files** screen.*

Application

Select **Applications** from the main menu. You can run applications, download more applications and access the web function.

Vodafone live!

Select **Applications > Vodafone live!** You can perform the following operations.

»» Application

- Browse the homepage. When browsing, you can press the scroll keys to select a link you want to access. The selected link is highlighted. Press OK key to access the link.
- Open a new page, and then you can enter the address of the page to be accessed.
- Save and edit the information of the websites that you often access. Some bookmarks have been preset by Vodafone for you on the phone.
- Access the saved webpages.
- Access the visited webpages.
- Link to the latest visited webpages.
- View or modify the settings for you to use the Vodafone service.

8. Safety Information

RF Exposure

General Statement on RF energy

Your phone contains a transmitter and a receiver. When it is ON, it receives and transmits RF energy. When you communicate with your phone, the system handling your call controls the power level at which your phone transmits.

Specific Absorption Rate (SAR)

Your mobile device is a radio transmitter and receiver. It is designed not to exceed the limits for exposure to radio waves recommended by international guidelines. These guidelines were developed by the independent scientific organisation ICNIRP and include safety margins designed to assure the protection of all persons, regardless of age and health.

The guidelines use a unit of measurement known as the Specific Absorption Rate, or SAR. The SAR limit for mobile devices is 2 W/kg and the highest SAR value for this device when tested at the ear was 0.593 W/kg*. As mobile devices offer a range of functions, they can be used in other positions, such as on the body as described in this user guide**.

As SAR is measured utilising the device's highest transmitting power, the actual SAR of this device while operating is typically below that indicated

*The tests are carried out in accordance with IEC standard PT62209-1.

**Please see page 44 about body worn operation.

above. This is due to automatic changes to the power level of the device to ensure it only uses the minimum power required to communicate with the network.

Body worn operation

Important safety information regarding radiofrequency radiation (RF) exposure.

To ensure compliance with RF exposure guidelines the phone must be used with a minimum of 1.5 cm separation from the body.

Failure to observe these instructions could result in your RF exposure exceeding the relevant guideline limits.

Limiting exposure to radio frequency (RF) fields

For individuals concerned about limiting their exposure to RF fields, the World Health Organisation (WHO) provides the following advice:

Precautionary measures: Present scientific information does not indicate the need for any special precautions for the use of mobile phones. If individuals are concerned, they might choose to limit their own or their children's RF exposure by limiting the length of calls, or using 'hands-free' devices to keep mobile phones away from the head and body.

Further information on this subject can be obtained from the WHO home page <http://www.who.int/peh-emf> WHO Fact sheet 193: June 2000.

Regulatory information

The following approvals and notices apply in specific regions as noted.

EU: INSERT copy of the “declaration of conformity”

FCC Statement

This equipment has been tested and found to comply with the limits for a Class B digital device, pursuant to Part 15 of the FCC Rules. These limits are designed to provide reasonable protection against harmful interference in a residential installation. This equipment generates, uses and can radiate radio frequency energy and, if not installed and used in accordance with the instructions, may cause harmful interference to radio communications. However, there is no guarantee that interference will not occur in a particular installation. If this equipment does cause harmful interference to radio or television reception, which can be determined by turning the equipment off and on, the user is encouraged to try to correct the interference by one or more of the following measures:

Reorient or relocate the receiving antenna.

Increase the separation between the equipment and receiver.

Connect the equipment into an outlet on a circuit different from that to which the receiver is connected.

Consult the dealer or an experienced radio/TV technician for help.

»» Distraction

This device complies with Part 15 of the FCC Rules and with RSS-210 of Industry Canada.

Operation is subject to the following two conditions:

- (1) This device may not cause harmful interference, and
- (2) This device must accept any interference received, including interference that may cause undesired operation.

Warning: Changes or modifications made to this equipment not expressly approved by HUAWEI may void the FCC authorization to operate this equipment.

Distraction

Driving

Full attention must be given to driving at all times in order to reduce the risk of an accident. Using a phone while driving (even with a hands free kit) causes distraction and can lead to an accident. You must comply with local laws and regulations restricting the use of wireless devices while driving.

Operating machinery

Full attention must be given to operating the machinery in order to reduce the risk of an accident.

Product Handling

General Statement on handling and use

You alone are responsible for how you use your phone and any consequences of its use.

You must always switch off your phone wherever the use of a phone is prohibited. Use of your phone is subject to safety measures designed to protect users and their environment.

- Always treat your phone and its accessories with care and keep it in a clean and dust-free place.
- Do not expose your phone or its accessories to open flames or lit tobacco products.
- Do not expose your phone or its accessories to liquid, moisture or high humidity.
- Do not drop, throw or try to bend your phone or its accessories.
- Do not use harsh chemicals, cleaning solvents, or aerosols to clean the device or its accessories.
- Do not paint your phone or its accessories.
- Do not attempt to disassemble your phone or its accessories, only authorised personnel must do so.
- Do not expose your phone or its accessories to extreme temperatures, minimum **-[XX]** and maximum **+ [XX]** degrees Celsius.
- Please check local regulations for disposal of electronic products.

»» Product Handling

Do not carry your phone in your back pocket as it could break when you sit down.

Small Children

Do not leave your phone and its accessories within the reach of small children or allow them to play with it.

They could hurt themselves or others, or could accidentally damage the phone.

Your phone contains small parts with sharp edges that may cause an injury or which could become detached and create a choking hazard.

Demagnetisation

To avoid the risk of demagnetisation, do not allow electronic devices or magnetic media close to your phone for a long time.

Electrostatic discharge (ESD)

Do not touch the SIM card's metal connectors.

Antenna

Do not touch the antenna unnecessarily.



Normal use position

When placing or receiving a phone call, hold your phone to your ear, with the bottom towards your mouth or as you would a fixed line phone.



Air Bags

Do not place a phone in the area over an air bag or in the air bag deployment area.

Store the phone safely before driving your vehicle.

Seizures/Blackouts

This phone is capable of producing bright flashing lights.

Repetitive Motion Injuries

To minimise the risk of RSI, when Texting or playing games with your phone:

- Do not grip the phone too tightly
- Press the buttons lightly
- Make use of the special features in the handset which minimise the number of buttons which have to be pressed, such as message templates and predictive text

»» Electrical Safety

- Take lots of breaks to stretch and relax

Emergency Calls

This phone, like any wireless phone, operates using radio signals, which cannot guarantee connection in all conditions. Therefore, you must never rely solely on any wireless phone for emergency communications.

Loud Noise

This phone is capable of producing loud noises which may damage your hearing.

Bright Light

This phone is capable of producing flash of light or use as a torch, do not use it too close to the eyes.

Phone Heating

Your phone may become warm during charging and during normal use.

Electrical Safety

Accessories

Use only approved accessories.

Do not connect with incompatible products or accessories.

Take care not to touch or allow metal objects, such as coins or key rings, to contact or short-circuit the battery terminals.

Connection to a Car

Seek professional advice when connecting a phone interface to the vehicle electrical system.

Faulty and Damaged Products

Do not attempt to disassemble the phone or its accessory.

Only qualified personnel must service or repair the phone or its accessory.

If your phone or its accessory has been submerged in water, punctured, or subjected to a severe fall, do not use it until you have taken it to be checked at an authorised service centre.

Interference

General statement on interference

Care must be taken when using the phone in close proximity to personal medical devices, such as pacemakers and hearing aids.

Pacemakers

Pacemaker manufacturers recommend that a minimum separation of 15 cm be maintained between a mobile phone and a pacemaker to avoid potential interference with the pacemaker. To achieve this use the phone

»» Interference

on the opposite ear to your pacemaker and do not carry it in a breast pocket.

Hearing Aids

People with hearing aids or other cochlear implants may experience interfering noises when using wireless devices or when one is nearby.

The level of interference will depend on the type of hearing device and the distance from the interference source, increasing the separation between them may reduce the interference. You may also consult your hearing aid manufacturer to discuss alternatives.

Medical devices

Please consult your doctor and the device manufacturer to determine if operation of your phone may interfere with the operation of your medical device.

Hospitals

Switch off your wireless device when requested to do so in hospitals, clinics or health care facilities. These requests are designed to prevent possible interference with sensitive medical equipment.

Aircraft

Switch off your wireless device whenever you are instructed to do so by airport or airline staff.

Consult the airline staff about the use of wireless devices on board the aircraft, if your device offers a 'flight mode' this must be enabled prior to boarding an aircraft.

Interference in cars

Please note that because of possible interference to electronic equipment, some vehicle manufacturers forbid the use of mobile phones in their vehicles unless a handsfree kit with an external antenna is included in the installation.

Explosive environments

Petrol stations and explosive atmospheres

In locations with potentially explosive atmospheres, obey all posted signs to turn off wireless devices such as your phone or other radio equipment.

Areas with potentially explosive atmospheres include fuelling areas, below decks on boats, fuel or chemical transfer or storage facilities, areas where the air contains chemicals or particles, such as grain, dust, or metal powders.

Blasting Caps and Areas

Turn off your mobile phone or wireless device when in a blasting area or in areas posted turn off "two-way radios" or "electronic devices" to avoid interfering with blasting operations.

Environmental Protection

Please observe the local regulations regarding the disposal of your packaging materials, exhausted battery and old phone and please promote their recycling. Do not dispose of an exhausted battery or old phone in municipal waste.



This symbol indicates that the equipment carrying this mark must NOT be thrown into general waste but should be collected separately and properly recycled under local regulations.

9. Appendix

Abbreviations

DRM	Digital Right Management
FDN	Fixed Dial Number
GPRS	General Packet Radio Service
GSM	Global System for Mobile communication
OTA	Over-The-Air
PIN	Personal Identification Number
PLMN	Public Land Mobile Network
PUK	PIN Unblocking Key
SD	Secure Digital Card
SAR	Specific Absorption Rate
STK	SIM Took Kit
URL	Universal Reasource Locator
USB	Universal Serial Bus

WAP Wireless Application Protocol

WCDMA Wideband Code Division Multiple Access

File Formats

The phone supports image files, video files and audio files of many formats. For details, see the following table.

Image	JPG, PNG, BMP, GIF, BCI, WBMP, SVG, and SVGZ
-------	--

Audio	MP3, AAC/AAC+, AMR, MID, WAV(ADPCM), MMF, QCP, and XMF/DLS
-------	--

Video	3GP, MP4, 3G2, and PMD
-------	------------------------
