



HUAWEI MU736 HSPA+ M.2 Module

Firmware Upgrade Guide

Issue 01

Date 2013-03-13

Huawei Technologies Co., Ltd. provides customers with comprehensive technical support and service. For any assistance, please contact our local office or company headquarters.

Huawei Technologies Co., Ltd.

Huawei Industrial Base, Bantian, Longgang, Shenzhen 518129, People's Republic of China

Tel: +86-755-28780808 Global Hotline: +86-755-28560808 Website: www.huawei.com

E-mail: mobile@huawei.com

Please refer color and shape to product. Huawei reserves the right to make changes or improvements to any of the products without prior notice.

Copyright © Huawei Technologies Co., Ltd. 2013. All rights reserved.

No part of this document may be reproduced or transmitted in any form or by any means without prior written consent of Huawei Technologies Co., Ltd.

The product described in this manual may include copyrighted software of Huawei Technologies Co., Ltd and possible licensors. Customers shall not in any manner reproduce, distribute, modify, decompile, disassemble, decrypt, extract, reverse engineer, lease, assign, or sublicense the said software, unless such restrictions are prohibited by applicable laws or such actions are approved by respective copyright holders under licenses.

Trademarks and Permissions



HUAWEI, HUAWEI, and  are trademarks or registered trademarks of Huawei Technologies Co., Ltd.

Other trademarks, product, service and company names mentioned are the property of their respective owners.

Notice

Some features of the product and its accessories described herein rely on the software installed, capacities and settings of local network, and may not be activated or may be limited by local network operators or network service providers, thus the descriptions herein may not exactly match the product or its accessories you purchase.

Huawei Technologies Co., Ltd reserves the right to change or modify any information or specifications contained in this manual without prior notice or obligation.

NO WARRANTY

THE CONTENTS OF THIS MANUAL ARE PROVIDED "AS IS". EXCEPT AS REQUIRED BY APPLICABLE LAWS, NO WARRANTIES OF ANY KIND, EITHER EXPRESS OR IMPLIED, INCLUDING BUT NOT LIMITED TO, THE IMPLIED WARRANTIES OF MERCHANTABILITY AND FITNESS FOR A PARTICULAR PURPOSE, ARE MADE IN RELATION TO THE ACCURACY, RELIABILITY OR CONTENTS OF THIS MANUAL.

TO THE MAXIMUM EXTENT PERMITTED BY APPLICABLE LAW, IN NO CASE SHALL HUAWEI TECHNOLOGIES CO., LTD BE LIABLE FOR ANY SPECIAL, INCIDENTAL, INDIRECT, OR CONSEQUENTIAL DAMAGES, OR LOST PROFITS, BUSINESS, REVENUE, DATA, GOODWILL OR ANTICIPATED SAVINGS.

Import and Export Regulations

Customers shall comply with all applicable export or import laws and regulations and will obtain all necessary governmental permits and licenses in order to export, re-export or import the product mentioned in this manual including the software and technical data therein.



About This Document

Revision History

Document Version	Date	Chapter	Descriptions
01	2013-03-13		Creation



Contents

1 One-Click Upgrade for the MU736 in Windows	5
1.1 Upgrade Procedures	5
1.2 Simple Verification.....	10
2 One-Click Upgrade for the MU736 in Android	11
2.1 Introduction.....	11
2.2 Use Guide	11
2.2.1 Ready for Update	11
2.2.2 Command List	12
2.3 Information Displayed	12
2.3.1 Step Information	12
2.3.2 Firmware Information.....	13
2.3.3 Download Progress	13
2.3.4 Error Code	13
2.3.5 Time Cost	14

1 One-Click Upgrade for the MU736 in Windows

The following rules must be observed for upgrading the M.2 module:

- Passwords are not required for upgrade from general versions to general versions.
- Passwords are not required for upgrade from general versions to customized versions.
- Passwords are required for upgrade from customized versions to general versions.
- Passwords are required for upgrade between different customized versions.

If passwords are required for upgrading modules, provide password management personnel with the International Mobile Equipment Identities (IMEIs) to obtain the passwords. The following sections use MU736 (a HSPA+ module) as an example to describe how to upgrade M.2 modules and verify whether the upgrade is successful.

1.1 Upgrade Procedures

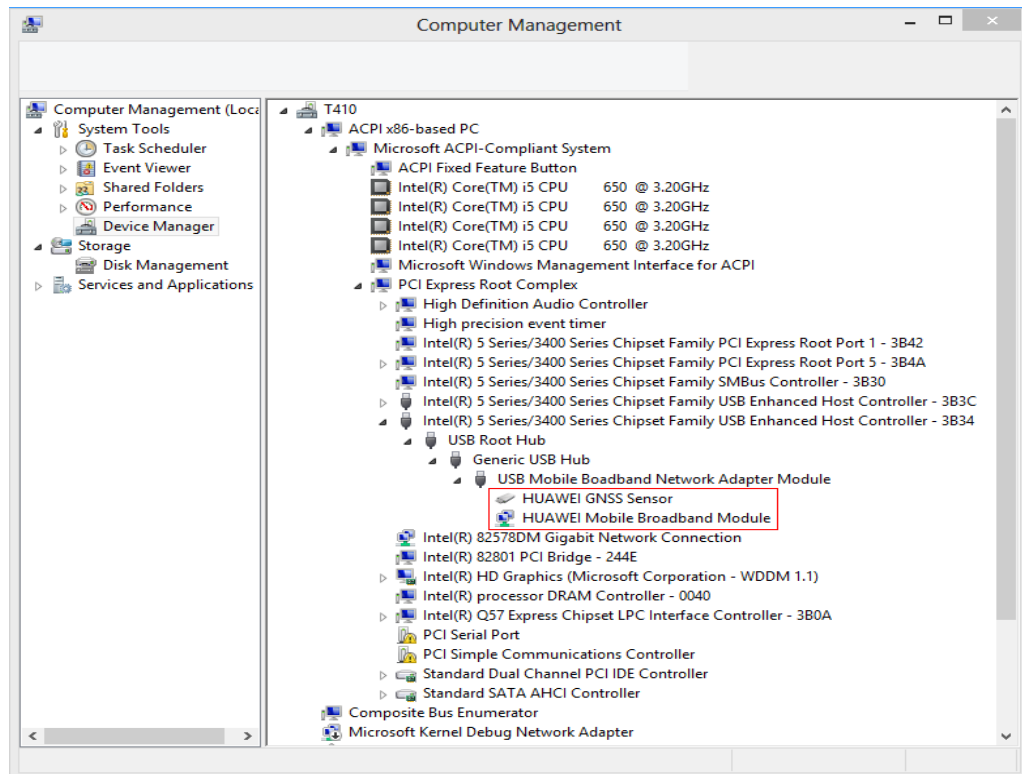
- Step 1 Connect the MU736 module to one of the USB ports on a PC (or the MU736 module embedded in the PC/Laptop). Right-click **My Computer**. Choose **Manage** to access **Computer Management**. The MU736 module is displayed High Speed device in **Device Manager**.



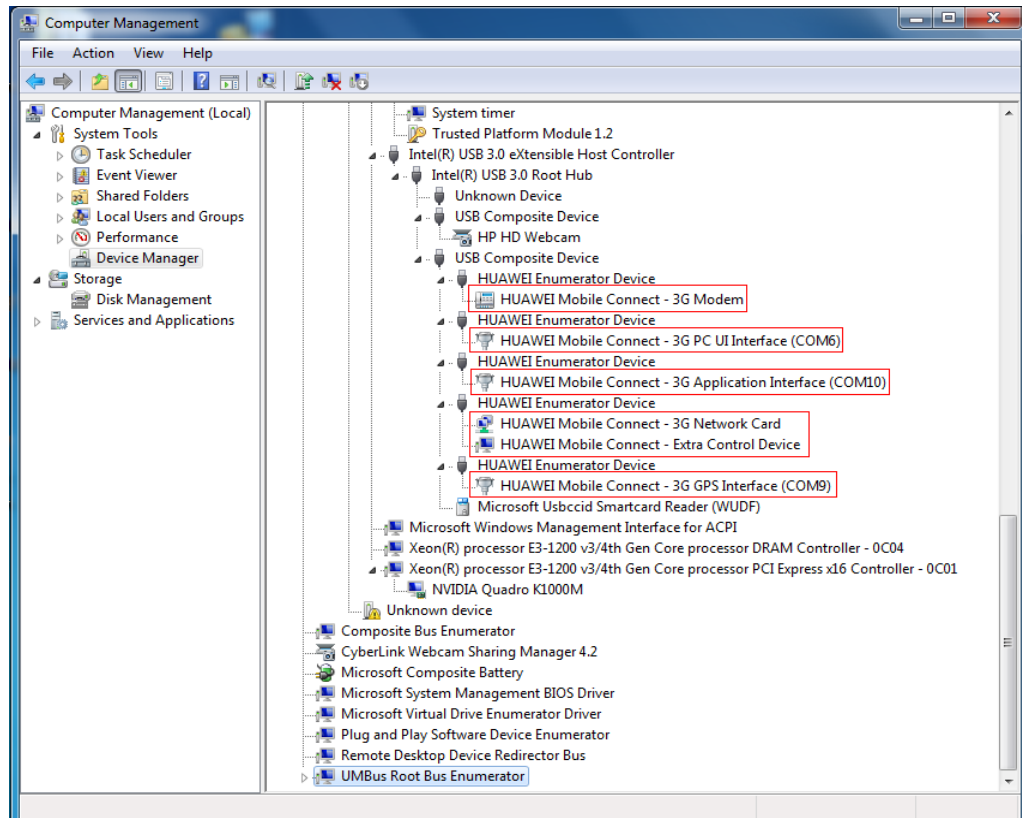
NOTE

The port state of the module before the update began and after the update completed should be shown as the following figures.

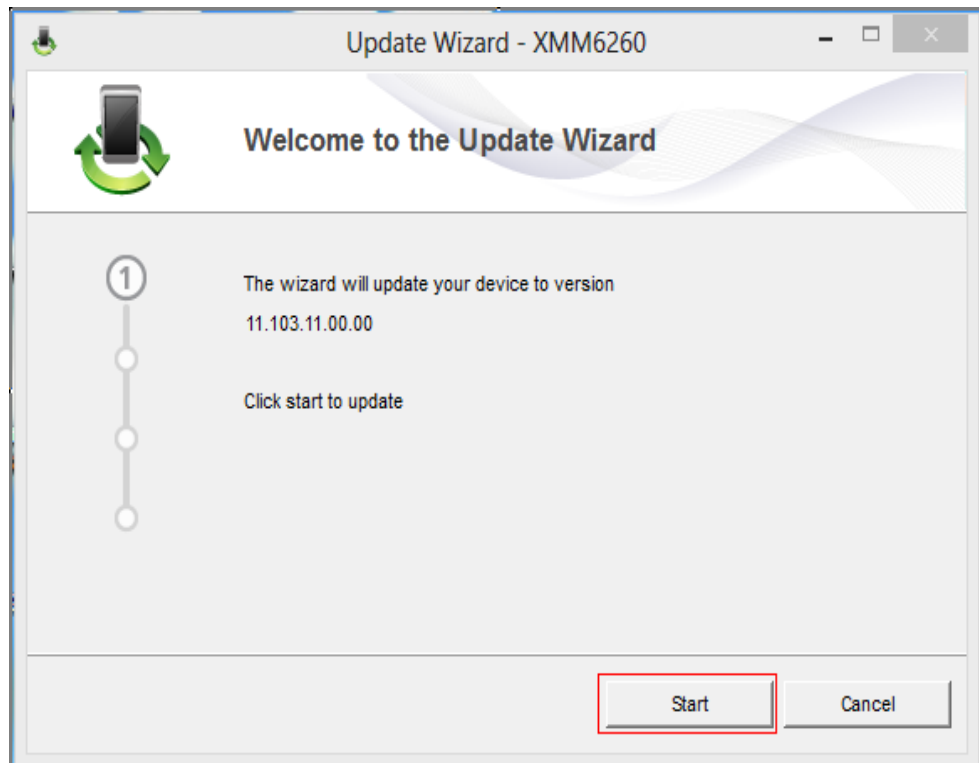
- In the Win8 system



- In the Win7 system



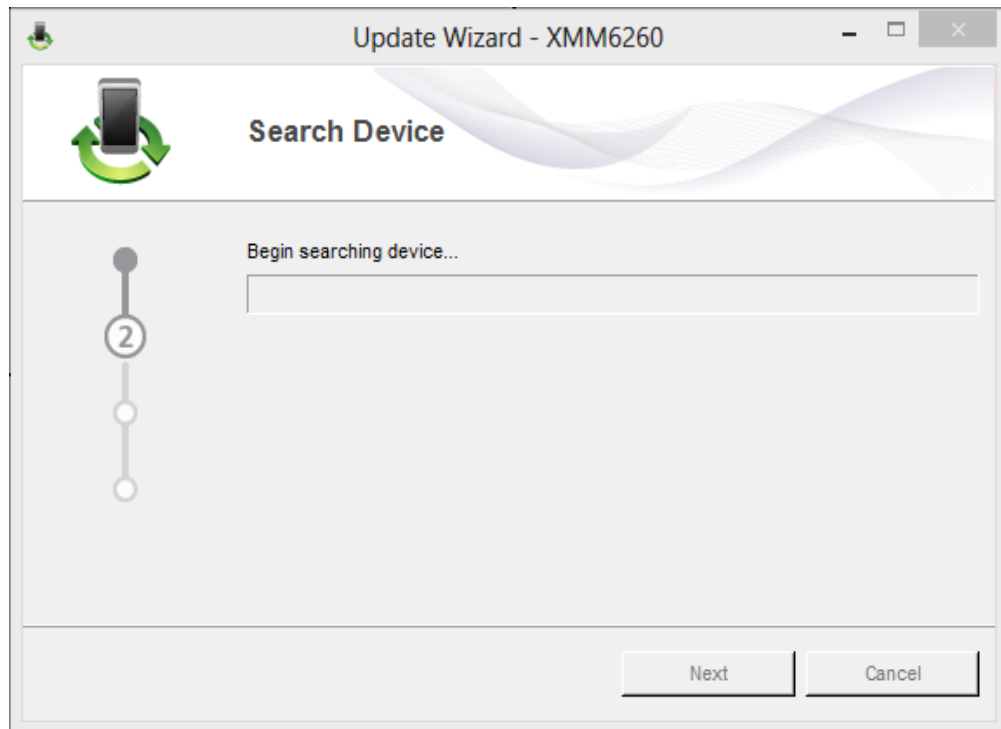
Step 2 Double-click the one-click upgrade tool (.exe), such as `MU736Update_11.103.11.00.00.exe`, as shown in the following figure.



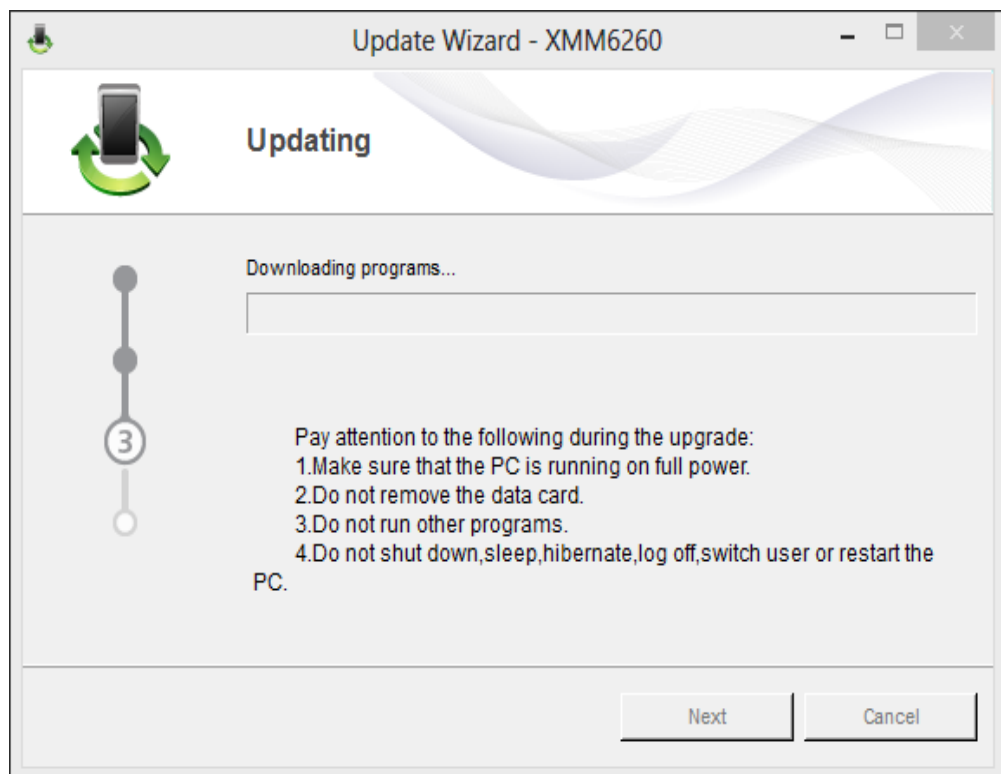
NOTE

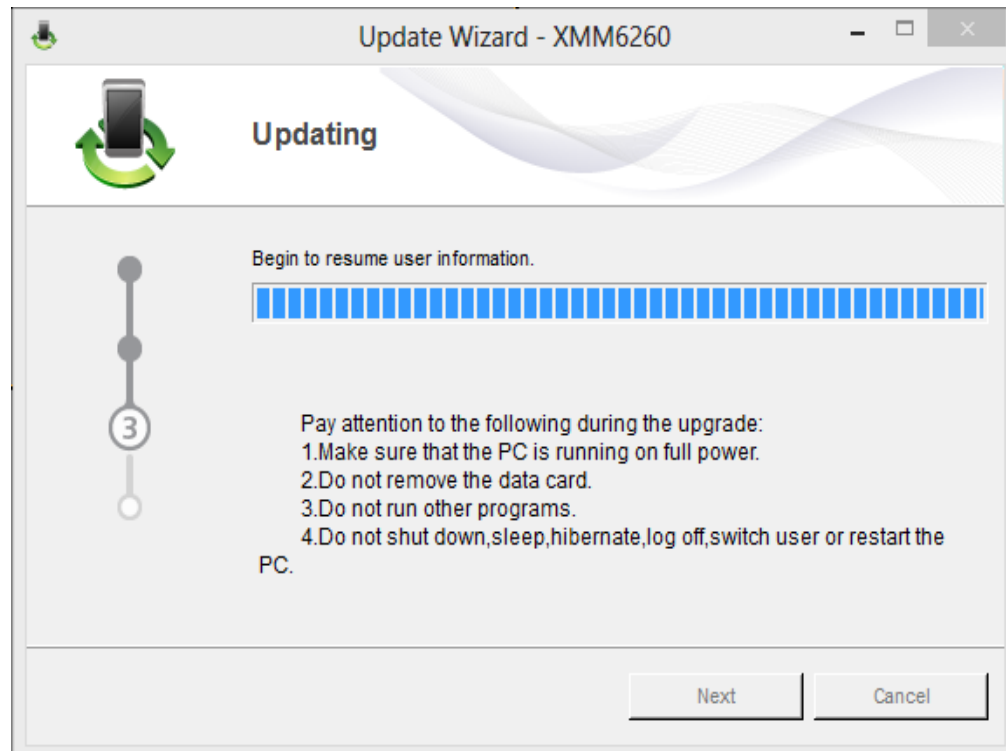
Do not run any applications that occupy ports, such as HyperTerminal.

Step 3 Click **Start**. The wizard will search for the module, as shown in the following figure.

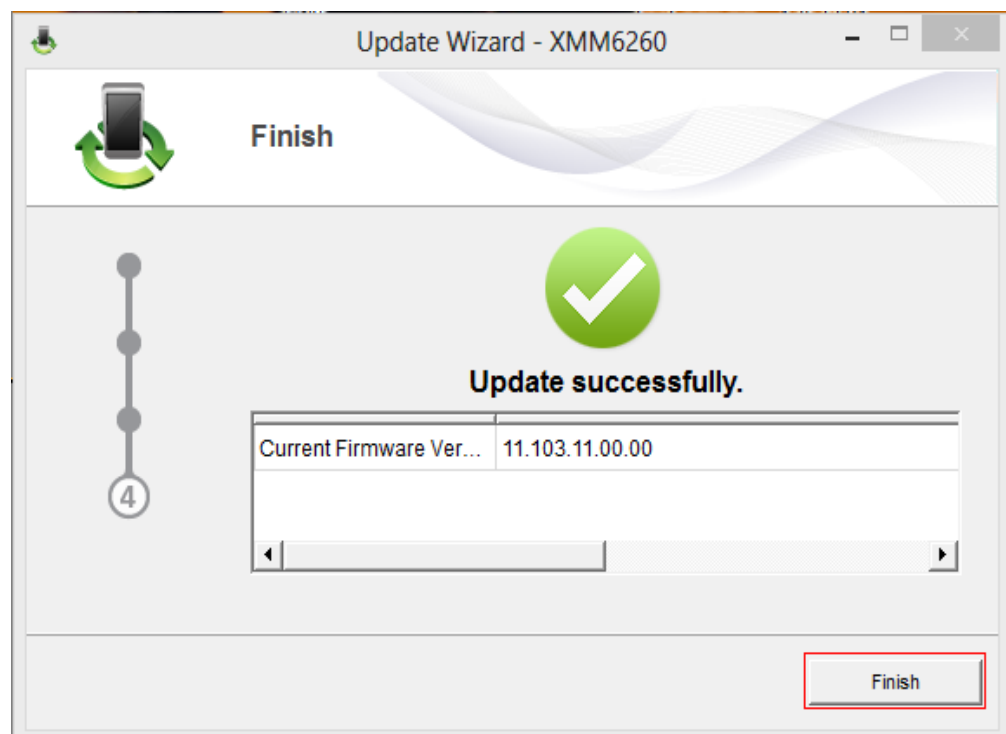


Step 4 When the module is found, the upgrade progress will be displayed as the following two figures.





Step 5 After the upgrade is completed, a dialog box indicating the new version is displayed. Verify that the new version is correct, and click **Finish** to complete the upgrade, as shown in the following figure.





1.2 Simple Verification

To check whether the upgrade is successful after it is completed, you can use HyperTerminal to check the current version of the module. Connect HyperTerminal to the PC UI interface of the module; and then run the **ATI** command from HyperTerminal, then the module information will be displayed.

Because the WIN8 system does not support HyperTerminal, you can send **ATI** command by using MBIM Tool or query the module information from PC Settings UI in tablet.

The following is an example:

ATI

Manufacturer: Huawei Technologies Co., Ltd

Model: MU736

Revision: 11.103.11.00.00

IMEI: 492100022000114

+GCAP: +CGSM

OK

2 One-Click Upgrade for the MU736 in Android

2.1 Introduction

Huawei Android-UpdateWizard tool (Release V300R002B002) is the tool which is just for updating the firmware of Huawei MU736 module.

Before the update, the tool will back up some data of the device such as IMEI and NV items. When the update is completed, the data of device will be resumed.

The tool complies with interfaces of Huawei device and is forbidden to apply to devices of any other manufacturer.



NOTE

- UpdateWizard is a tool for the update. The full directory of the soft file with .BIN format needs to be input when use the update tool. Input password if it is necessary, as “-p password”. Command rules: “full directory of the update tool” + “full directory of the soft file”+ “-p” + “password” of the update. For example:
`/data/Resources/UpdateWizard /data/Resources/11.103.10.00.00.BIN -p 47309592`
- If the tool works, it will create a log file “hwupgradewizard.log” in the path where the tool is in.

2.2 User Guide

This section describes how to operate the Android-UpdateWizard tool.

2.2.1 Ready for Update

For using Android-UpdateWizard tool, you should let it in the place where the tool will work in. You can do it with another tool of Android Debug Bridge (ADB) which can copy UpdateWizard and .bin files to any folder. For example: choose the path **/data/Resources**. You can run the command as “**chmod 777 /data/Resources/UpdateWizard**” to make over the account level of the tool.

2.2.2 Command List

- Step 1 Disable ril, and run the command “**stop ril-daemon**”.
- Step 2 Start the update. If the password is necessary, run the command “**/data/Resources/UpdateWizard /data/Resources/XXXXX.BIN -p XXXXXXXX**” to start updating.



NOTE

- /data/Resources/UpdateWizard: the full directory of this tool
- /data/Resources/XXXXX.BIN: the full directory of the .BIN file
- XXXXXXXX: password
- The path for the update tool, .BIN file and parameters (command parameters or password) must be separated with a space.

Step 3 Run the ril again after Android-UpdateWizard tool is completed.

Step 4 Run the command “**start ril-daemon**”.

2.3 Information Displayed

Because Android-UpdateWizard tool does not work with User Interface (UI), so all the information is output to the CMD windows, including step information, firmware information, download progress, error code and time cost.

2.3.1 Step Information

Before every step, the tool will give some information to show what the tool is doing, as shown in the following figure.

```
UpdateWizard version: U300R002B001
Start Time: 0:44:12
.EM_STATE_FINDING: begin search device...
EM_STATE_CHECKINFO: begin check device information...
ISO Version: //
Authority ID: 492100022000114
Board Class: Huawei MU736
Firmware Version: 11.103.10.00.00
.EM_STATE_BACKUP_NV: backup nv...
EM_STATE_SWITCHPORT: switch port...
.....EM_STATE_UPDATING: updating...
...Now update progress percents: 1
..Now update progress percents: 2
```

2.3.2 Firmware Information

When the tool is in the step of “check device information”, it will output the device information (IMEI/ESN/MEID) to the CMD windows after the update is completed, as shown in the following figure.

```
UpdateWizard version: U300R002B001
Start Time: 0:44:12
..EM_STATE_FINDING: begin search device...
EM_STATE_CHECKINFO: begin check device information...
ISO Version: //
Authority ID: 492100022000114
Board Class: Huawei MU736
Firmware Version: 11.103.10.00.00
..EM_STATE_BACKUP_NV: backup nv...
EM_STATE_SWITCHPORT: switch port...
.....EM_STATE_UPDATING: updating...
...Now update progress percents: 1
..Now update progress percents: 2
```

2.3.3 Download Progress

When the tool is downloading the data, it will show how much data has been downloaded, as shown in the following figure.

```
...Now update progress percents: 51
..Now update progress percents: 55
..Now update progress percents: 56
..Now update progress percents: 57
...Now update progress percents: 58
..Now update progress percents: 59
..Now update progress percents: 60
..Now update progress percents: 61
..Now update progress percents: 62
...Now update progress percents: 63
..Now update progress percents: 64
..Now update progress percents: 65
..Now update progress percents: 66
```

2.3.4 Error Code

Before the tool exits, it will show the last error code, as shown in the following figure.

```
...Now update progress percents: 98
..Now update progress percents: 99
..Now update progress percents: 100
.....EM_STATE_RESUME_NV: resume nv...
Firmware Version: 11.103.11.00.00
Last error: 0: Success
End Time: 0:48:20

Program takes 248 seconds.
#
```



2.3.5 Time Cost

The start time, end time and the time cost for the update will be displayed, as shown in the following figure.

```
UpdateWizard version: U300R002B001
Start Time: 0:44:12
.EM_STATE_FINDING: begin search device...
EM_STATE_CHECKINFO: begin check device information...
ISO Version: //
Authority ID: 492100022000114
Board Class: Huawei MU736
Firmware Version: 11.103.10.00.00
.EM_STATE_BACKUP_NV: backup nv...
EM_STATE_SWITCHPORT: switch port...
.....EM_STATE_UPDATING: updating...
...Now update progress percents: 1
..Now update progress percents: 2

...Now update progress percents: 98
..Now update progress percents: 99
..Now update progress percents: 100
.....EM_STATE_RESUME_NV: resume nv...
Firmware Version: 11.103.11.00.00

Last error: 0: Success
End Time: 0:48:20

Program takes 248 seconds.
```