

## B310s-927 FAQ

### Applicable Area:

User: Individual Consumer, Carrier Consumer, Authorized Service Station

Applicable Area: Abroad

### Q1: Appearance of device



### Q2: Application of device?

B310s-927 provides functions such as 4G LTE / 3G WCDMA / 2G GSM / WAN access, LAN, Wi-Fi, and Voice service. The general application is as below:

#### ➤ 4G/3G /2G Wireless Voice and Internet access

Insert the proper USIM card and log on the wireless network; telephone function can be used by connecting to RJ11 port of B310s-927. Computers and Smartphones can share Internet connection via LAN port or Wi-Fi, and build a Local Area Network.

### Q3: The band supported by B310s-927?

The band classes are listed below:


Band		Frequency	
		UL	DL
LTE-FDD	Band3	1710MHz~1785MHz	1805MHz~1880MHz
LTE-TDD	Band40	2300~2400MHz	
WCDMA	Band1	1920MHz~1980MHz	2110MHz~2170MHz
	Band8	880MHz~915MHz	925MHz~960MHz
GSM	PCS1900	1850MHz~1910MHz	1930MHz~1990MHz
	DCS1800	1710MHz~1785MHz	1805MHz~1880MHz
	GSM900	880MHz~915MHz	925MHz~960MHz
	GSM850	824MHz~849MHz	869MHz~894MHz

#### Q4: How to use the SMA connector of B310s-927?

It is used for connecting optional external antenna when the wireless signal is weak. Usually the external antenna is not required. The external antenna **CANNOT** place outdoors to prevent probably damage caused by lightning strike.

**Note:** If external antenna is needed, please use the antenna delivered with the product.

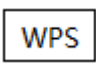

#### Q5: How to switch on/off Wi-Fi?

- 1) The Wi-Fi is default on after B310s-927 power-up.
- 2) Switch off Wi-Fi: visit <http://192.168.1.1> on PC, input the username/password as **admin/admin**. Choose **【Settings】** → **【WLAN】** → **【WLAN Basic Settings】**, click “Disable” at “WLAN Module” and click “Apply”. When the indicator  is off, the Wi-Fi is turned off.
- 3) Switch on Wi-Fi: visit <http://192.168.1.1> on PC, choose **【Settings】** → **【WLAN】** → **【WLAN Basic Settings】**, click “Enable” at “WLAN Module” and click “Apply”.

When the indicator  is on, the Wi-Fi is turned on.

#### Q6: How to configure Wi-Fi(WPS)

- 1) Turn on Wi-Fi of both B310s-927 and the device prepared to connect to B310s-927 via Wi-Fi.

- 2) Press the button  on the top of B310s-927 and hold for a while. When the indicator  flickers, B310s-927 will configure WPS automatically and the device is connected.

### Q7: How to configure the router function

- 1) Connect PC to B310s-927 via Ethernet cable or Wi-Fi, visit <http://192.168.1.1> on web browser.
- 2) Log on the WebUI, the default username/password is **admin/admin**.
- 3) Choose **【Settings】** → **【Ethernet】** → **【Ethernet Settings】** and make the configuration.

### Q8: How to connect Internet

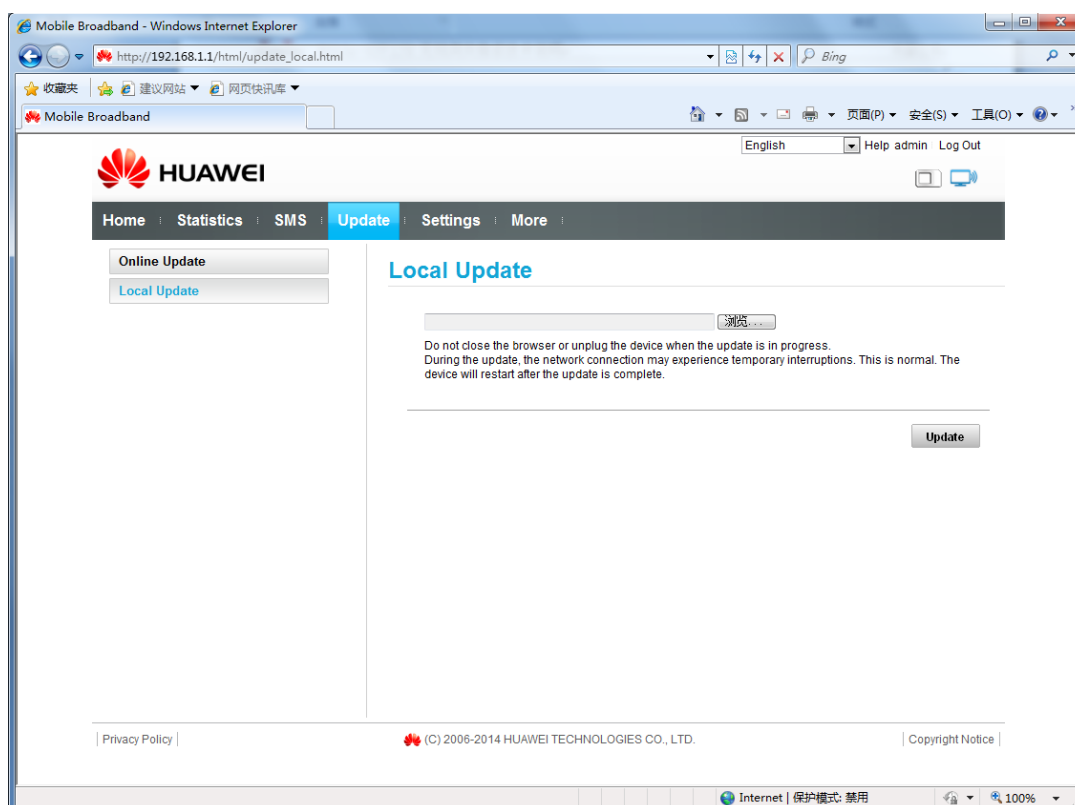
B310s-927 can connect Internet automatically. The manual setting method is to visit <http://192.168.1.1>, choose **【Settings】** → **【Dial-up】** → **【Network Settings】** and make the configuration.

### Q9: How to resume default settings

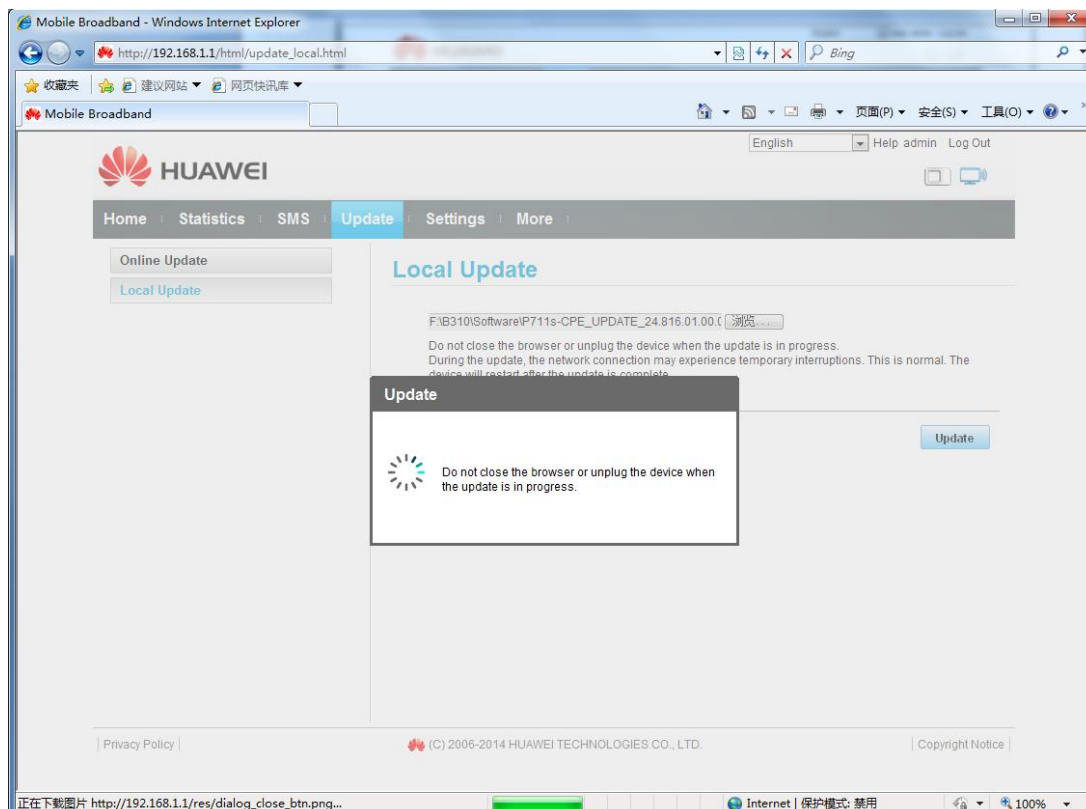
When B310s-927 is power-up, press in the Reset hole on the rear surface by a needle shape object and hold for 3s. When the indicators flicker several times, the B310s-927 restarts and resumes default settings.

### Q10: How to upgrade software

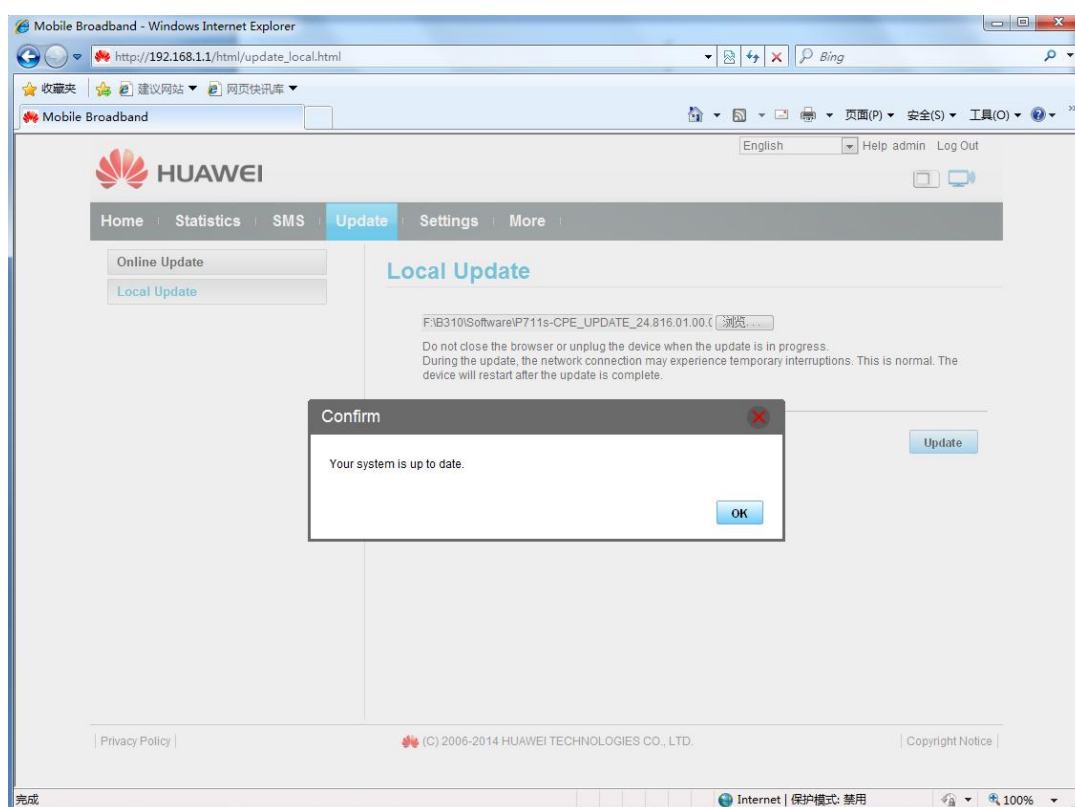
- 1) Connect PC to B310s-927 via Ethernet cable or Wi-Fi, visit <http://192.168.1.1> on browser.
- 2) Click **【Update】** → **【Local Upgrade】**



3) Fill the software file path. Then Click “Update”.



4) When upgrading completed, message box pop-up as below, Click OK to complete the issue.



## Q11: Common trouble-shooting

When there is a failure such as network disconnected abnormally; Wi-Fi connection is lost; WebUI does not work etc. while B310s-927 is running. Follow the steps below:

- 1) Turn off the power and turn on again. Check if problem still occurred.
- 2) Use needle shape object to press Reset hole on rear of B310s-927 to resume default settings. Check if problem is resolved.
- 3) When the problem remains, maintenance is needed.

## FAQ Revision Record

Revision	Author	Date	Revision Content	Reviewer
V1.0	Wu Chao	2014-9-20	First draft prepared in Chinese	Wei Jinqiang