



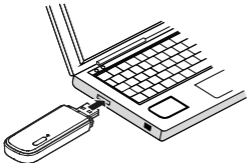
## **Quick Start Guide**

# **Thank you for choosing the 3G EVO Wingle; a Wi-Fi USB that lets you freely Mingle with multiple Wi-Fi gadgets On-the-Go!**

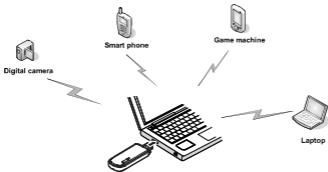
This guide briefly describes the appearance of the 3G EVO Wingle and the procedures for using the 3G EVO Wingle. For details about how to set the management parameters, please see help information on the web management page.

## Connection Scenarios

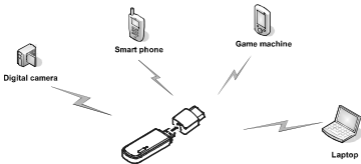
Scenario 1: One-device Internet access using computer



## Scenario 2: Multi-device Internet access using Wi-Fi (connected to a computer)

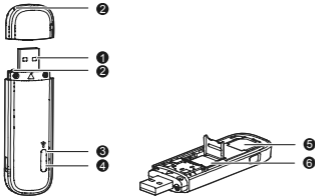


### Scenario 3: Multi-device Internet access using Wi-Fi (connected to the power adapter)



## Getting to Know Your 3G EVO Wingle

The following figure shows the 3G EVO Wingle. It is provided only for your reference. The actual product may be slightly different.

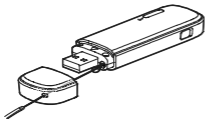


## ❶ **USB connector**

It connects the 3G EVO Wingle to a computer.

## ❷ **Strap holes**

You can tie the 3G EVO Wingle and its cap together by threading a strap through the strap holes.



### **③ Wi-Fi indicator**

It indicates the status of a Wi-Fi network.

- Blinking green once every 3 seconds: The 3G EVO Wingle is powered on, and the Wi-Fi function is available.
- Steady green: A Wi-Fi connection is set up.
- Off: The Wi-Fi function is turned off or fails, or the 3G EVO Wingle has been removed.

### **④ 2G/3G Indicator**

It indicates the 3G EVO Wingle's status.

- Green, blinking twice every 2s: The 3G EVO Wingle is powered on.



- Green, blinking once every 0.2s: The software of the 3G EVO Wingle is being upgraded.
- Green, blinking once every 2s: The 3G EVO Wingle is registering with a 2G network.
- Green, solid: The 3G EVO Wingle is transmitting data for 2G network .
- Blue, blinking once every 2s: The 3G EVO Wingle is registering with a 3G network.
- Blue, solid: The 3G EVO Wingle is transmitting data for 3G network.
- Off: The 3G EVO Wingle is removed.

## **5 UIM card slot**

It holds a User Identity Module (UIM) card. Also known commonly as SIM Card. Your 3G EVO Wingle is pre-configured to PTCL EVO network; and hence does not require a UIM/SIM card for service activation.

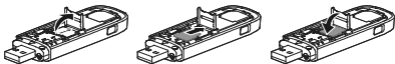
## **6 microSD card slot**

It holds a microSD card.

# Getting Started

## Installing the microSD Card

1. Slide the front cover off.
2. Slide the microSD card holder door towards its hinges to unlock it. Then open the door.
3. Place the microSD card into the holder. Ensure that the gold contact area faces down and that the gold contacts of the microSD card align with those of the holder.
4. Close the microSD card holder door and slide it away from its hinges to lock it.



5. Slide the front cover back onto the 3G EVO Wingle until it snaps into place.

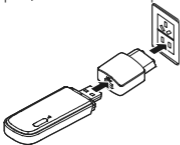
**Note:**

- The microSD card is an optional accessory. If it is not included in the product package, purchase one separately.
- When installing a microSD card, ensure that the microSD card notch aligns with that of the microSD card holder.
- Do not remove the microSD card when the card is in

use. Otherwise, the card and your 3G EVO Wingle may be damaged and the data stored on the card may be corrupted.

## **Using the Power Adapter**

Connect the 3G EVO Wingle to the power adapter's USB port, and connect the power adapter to a power outlet.



**Note:**

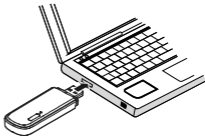
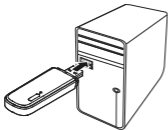
- Only use power adapters compatible with the 3G EVO Wingle and provided by a designated manufacturer (HW-050100E2W). Use of an incompatible power adapter or one from an unknown manufacturer may cause the 3G EVO Wingle to malfunction, fail, or could even cause a fire. Such use voids all warranties, whether expressed or implied, on the product.
- The power adapter is an optional accessory. Please note that the power adapter is not included in the product package and needs to be purchased separately.

## **Using Your 3G EVO Wingle**

The procedure for installing the management program depends on your computer's operating system. The following sections are based on Windows 7.

### **Connecting to a Network**

1. Connect the 3G EVO Wingle to one of your computer's USB ports.



The installation wizard runs automatically.

- 2.** Complete the installation as prompted.  
When the installation is complete, the 3G EVO Wingle's web management page is displayed.
- 3.** A dial-up connection is set up and you are connected to the network in automatic mode.



**Note:**

- If the installation wizard does not run automatically, find the **AutoRun.exe** file in the driver path, and double-click the file to run it.
- The default user name and password of the web management page are **admin**.
- When using the 3G EVO Wingle to access a network, do not use other devices to access the network, because doing so may cause conflicts.
- A maximum of five WiFi devices can connect to the 3G EVO Wingle to access the Internet.

- By default, the 3G EVO Wingle automatically disconnects from the Internet when you are roaming outside the network coverage area.
- If you are not connected to the network, access <http://192.168.1.1> to check the device status.
- If you cannot access <http://192.168.1.1>, disconnect other network connections, such as an Ethernet or Wireless Fidelity (Wi-Fi) connection, remove and then insert the 3G EVO Wingle, or restart the computer.

## **Disconnecting from a Network**

Remove the 3G EVO Wingle from your computer.

### **Note:**

- By default, the 3G EVO Wingle automatically disconnects from the network if no data is transferred within 10 minutes.
- If you do not need to connect to the network, it is recommended that you remove the 3G EVO Wingle from your computer to reduce data traffic.

## Setting Up a Wi-Fi Connection

1. Ensure that the Mobile WiFi Smart's Wi-Fi function is on.
2. Select **Start > Control Panel > Network and Internet > Network and Sharing Center > Connect to a network.**

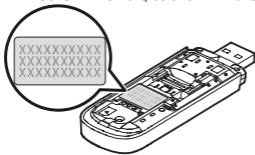
### **Note:**

Before establishing a Wi-Fi connection, ensure that the computer is equipped with a wireless network adapter. If the computer indicates a wireless network connection, the wireless network adapter can be used. Otherwise, verify that your wireless network adapter is working properly.

3. Select the wireless network connection with the Mobile WiFi Smart's SSID and click **Connect**.

**Note:**

- If a security mechanism is enabled for the wireless network connection, enter the correct network key.
- The SSID and the network key are printed on the Mobile WiFi Smart, as shown in the following figure.



4. Wait until a wireless network connection icon is displayed in the lower right corner of the computer screen. A wireless network connection is set up.

## Viewing Service Information

Visit <http://192.168.1.1> to view your service information.

## Wi-Fi Sharing

1. Log in to the web management page\_ <http://192.168.1.1>. Login by entering the Username "admin" and Password "admin".
2. From the sharing page, choose the "Web share mode".

3. Set up the following options according to your needs then click **“Select”** > **“Apply”**.
4. Under web share mode settings you may select the Access type as **“Read only”** or **“Read/Write only”**. Read only option is only for viewing the files from SD card – copying or downloading the file is restricted while with Read/write option you can download the file from SD card.
5. Under the Shared path option you can select the Entire SD card or Custom setting. When you select the entire SD card allow access to all files/folders on your SD card. If you select the custom setting you may specify the files/folders.

6. For uploading a file in the SD card you need to select the upload option and then browse the file from your PC which you want to upload followed by clicking the upload button.

## **IP Sharing**

1. Log in to the web management page  
<http://192.168.1.1>. Login to the device by typing in "admin" in both login and password fields.
2. Click on "Settings" option.
3. Check the IP address from "Settings" page click on "System" > "Device Information" from here you can check the Wan IP address.

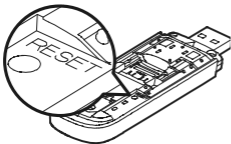


4. From the **“Settings”** page, choose **“Security”** > **“Firewall Switch”**.
5. Select the **“Enable firewall”** and **“Open Wan IP sharing”**, and then click **“Apply”**.
6. The **“IP Sharing”** link now is available.
7. By typing the Wan IP address, the other users can remotely access the web management page and view the SD files.

## Restoring Factory Defaults

If you are uncertain of which settings you have configured or changed, you can restore the factory defaults that come with the 3G EVO Wingle, and reconfigure the device.

To restore the factory defaults, connect the 3G EVO Wingle to a computer or a power outlet, and press and hold the **RESET** button for 5 seconds.



**Note:**

Restoring factory defaults deletes all the device's user-defined settings and restores all the settings on the web management page to their defaults.

31010UGQ\_01

