

SPECIFICATIONS



Model : TP-140B

Manufacture : Huintech

Country of origin : Republic of Korea

Size : Touch Pointer 108mm X 43mm X 13mm
USB Receiver 26.6mm X 16.1mm X 6.3mm

Battery : Li-Polymer 680mA

RF Frequency : 2.4GHz

RF Distance : <20m (<65feet)

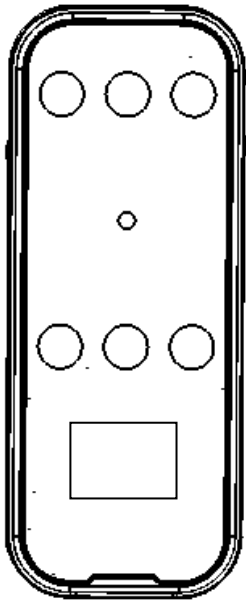
Feature : Touch & Click

Working Mode

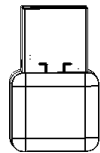
- Mouse
- Presenter
- Multimedia Control
- Virtual Keyboard (Software support)

OS Support : Windows-XP, Vista, 7 [32/64-bit]
Mac OS X

COMPONENTRY



Touch-Pointer



USB Receiver



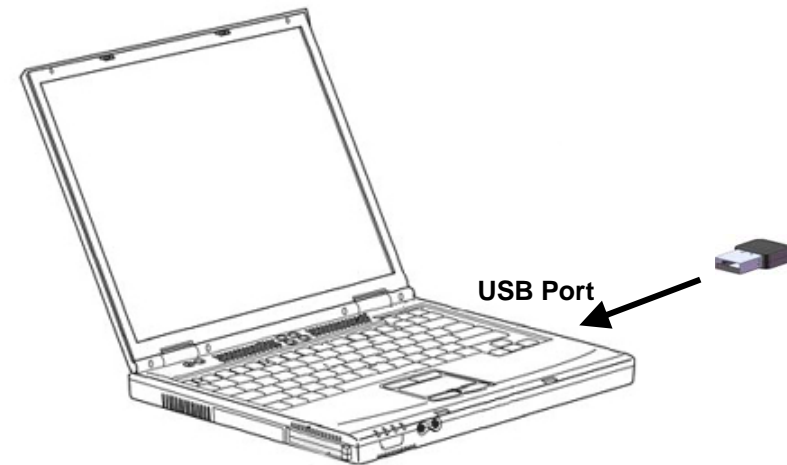
**USB A-A Cable
(for Recharge)**

**TP-140B
User Manual**

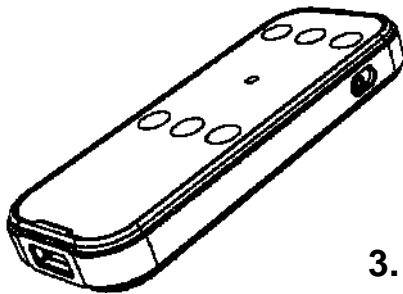
User Manual

How to ...

1. Install Application Software
download at
www.huintech.com/download

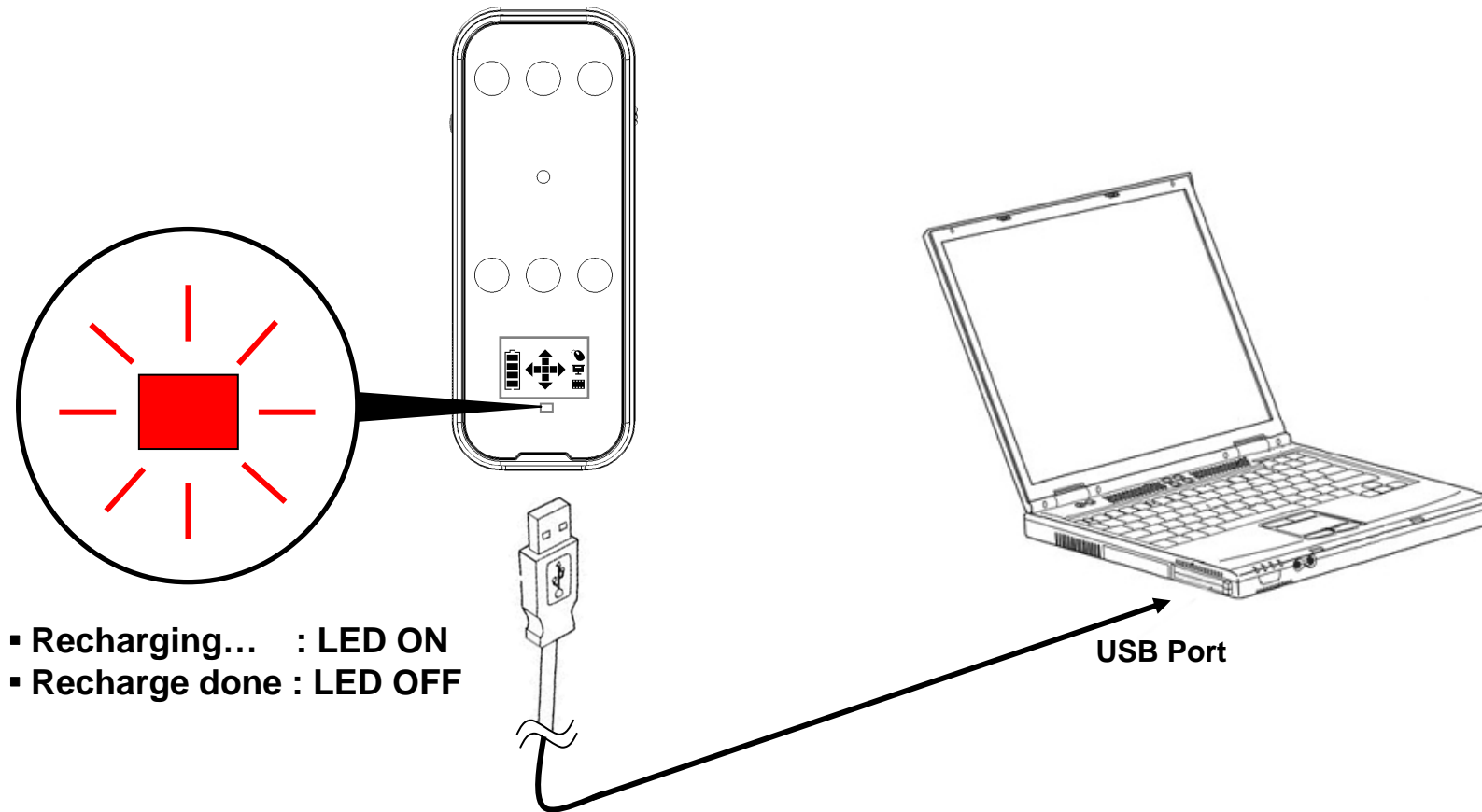


2. Insert the USB Receiver into PC



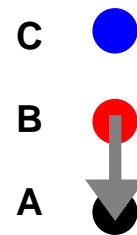
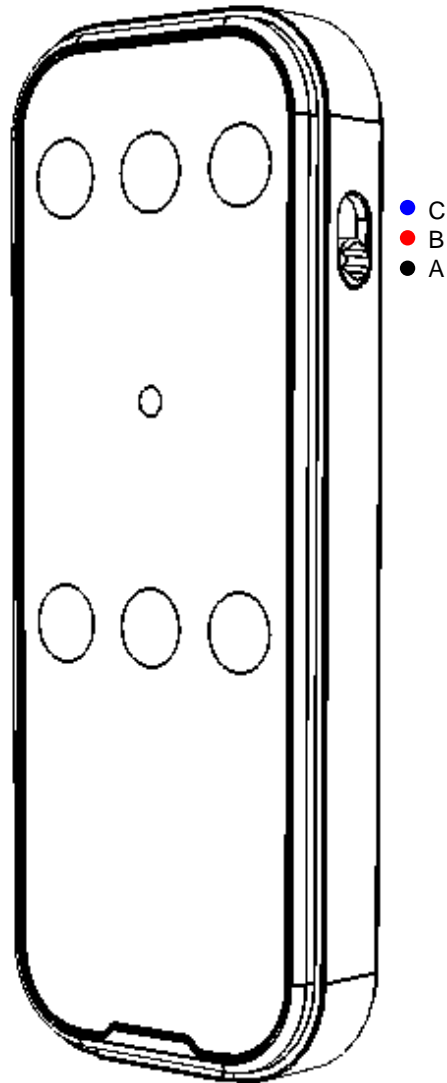
3. Power On "Touch-pointer"
and... Try it !

BATTERY RECHARGE

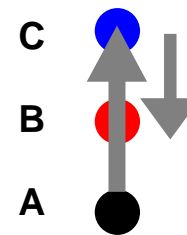


NOTES : PLEASE USE APPROVED RECHARGING A to A USB ONLY.

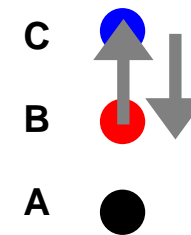
POWER & MODE Switch



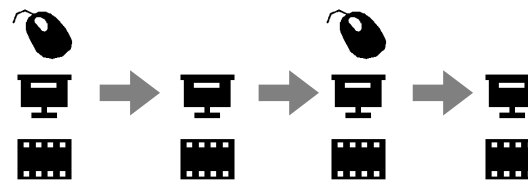
POWER
OFF



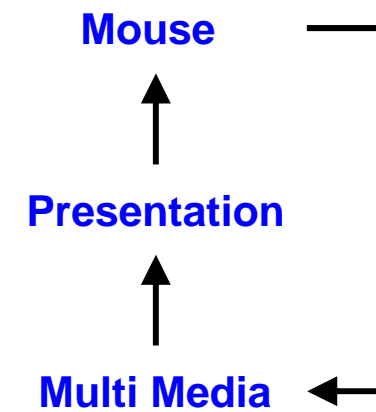
POWER
ON



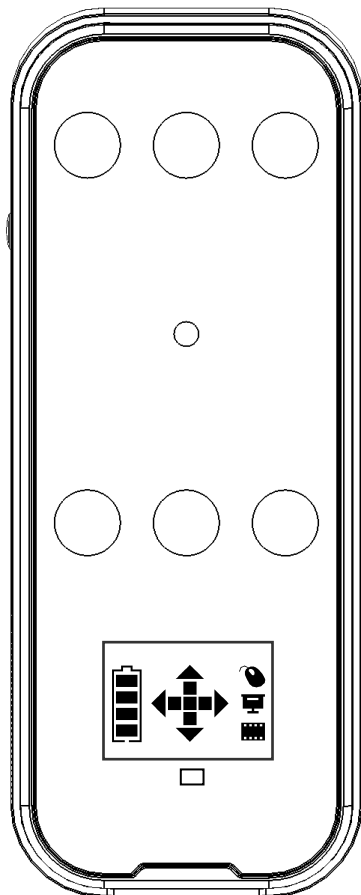
MODE
CHANGE



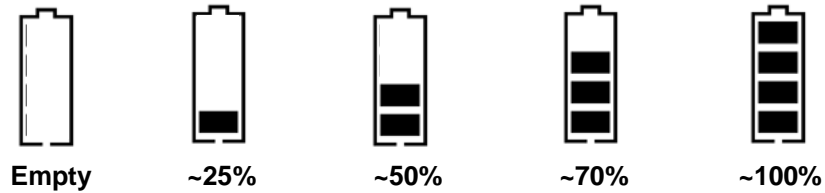
Selected ICON is Flicking



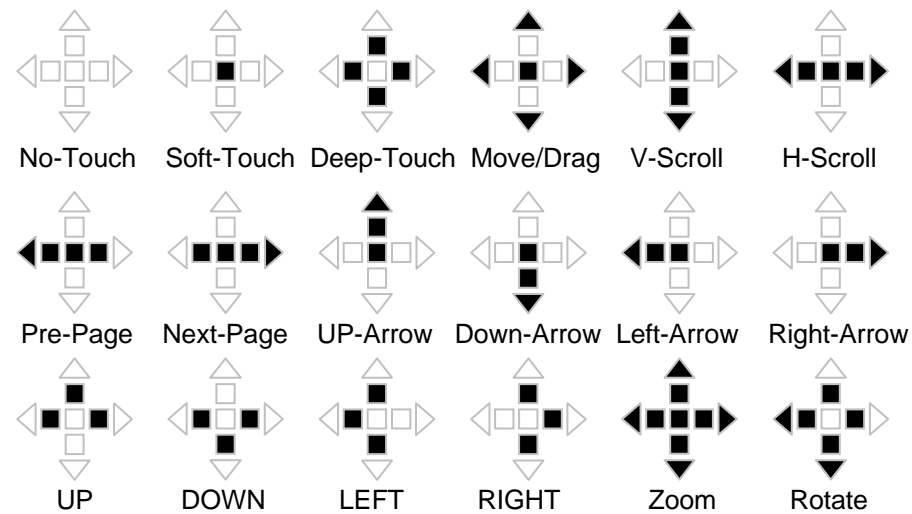
LCD Feature



BATTERY STATUS



GESTURE STATUS



WORKING MODE



MOUSE

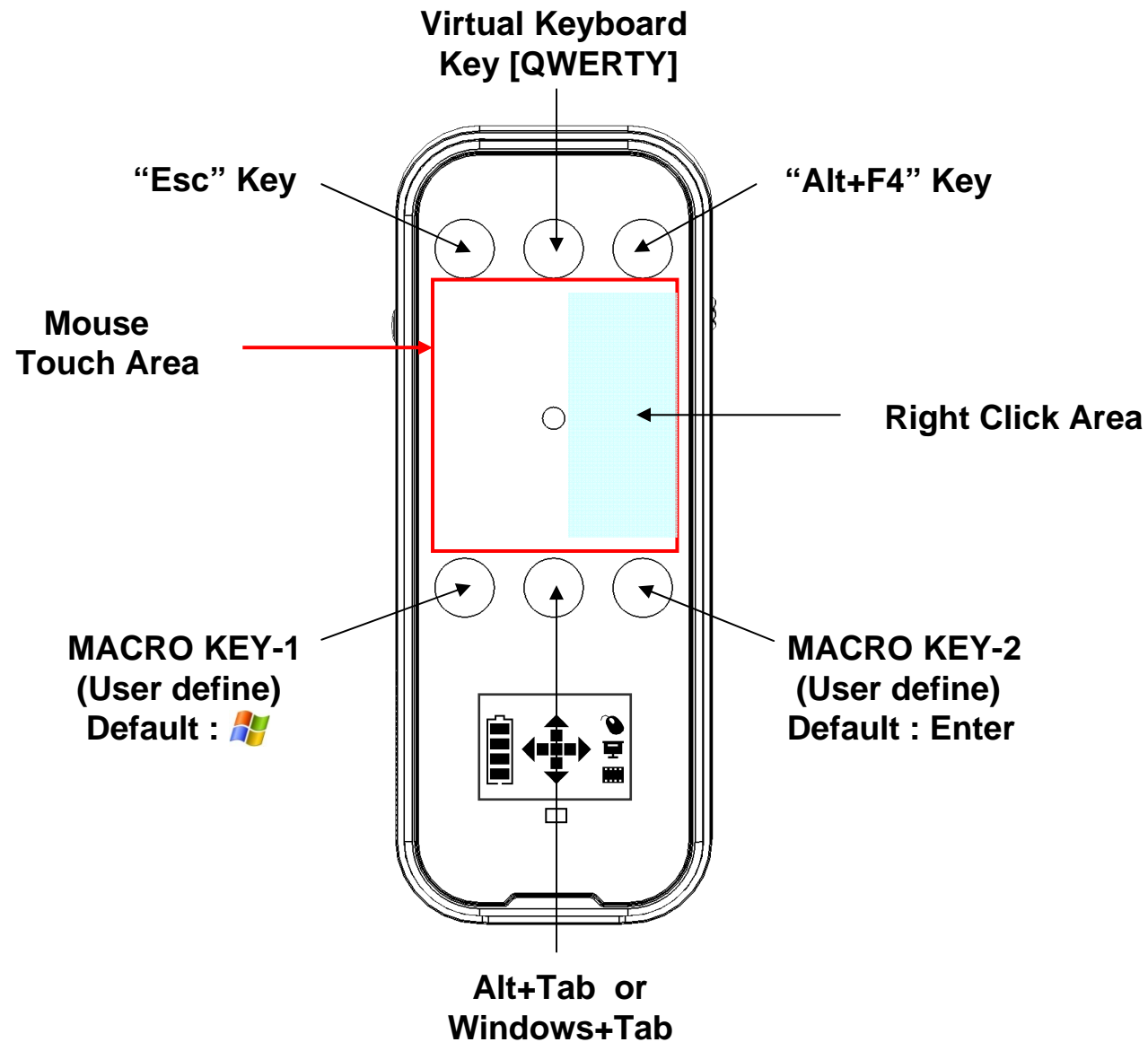


PRESENTATION

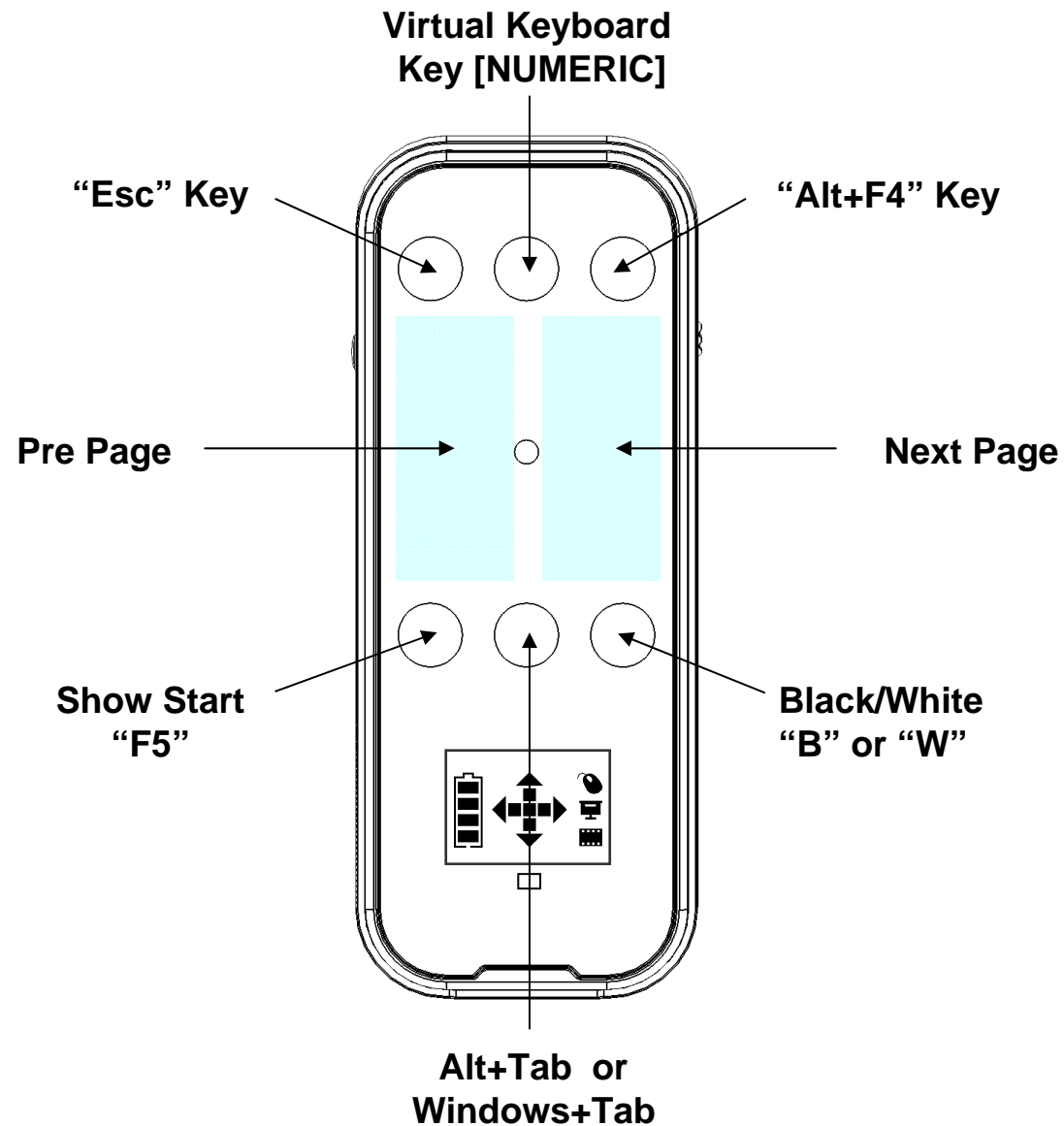


MULTIMEDIA

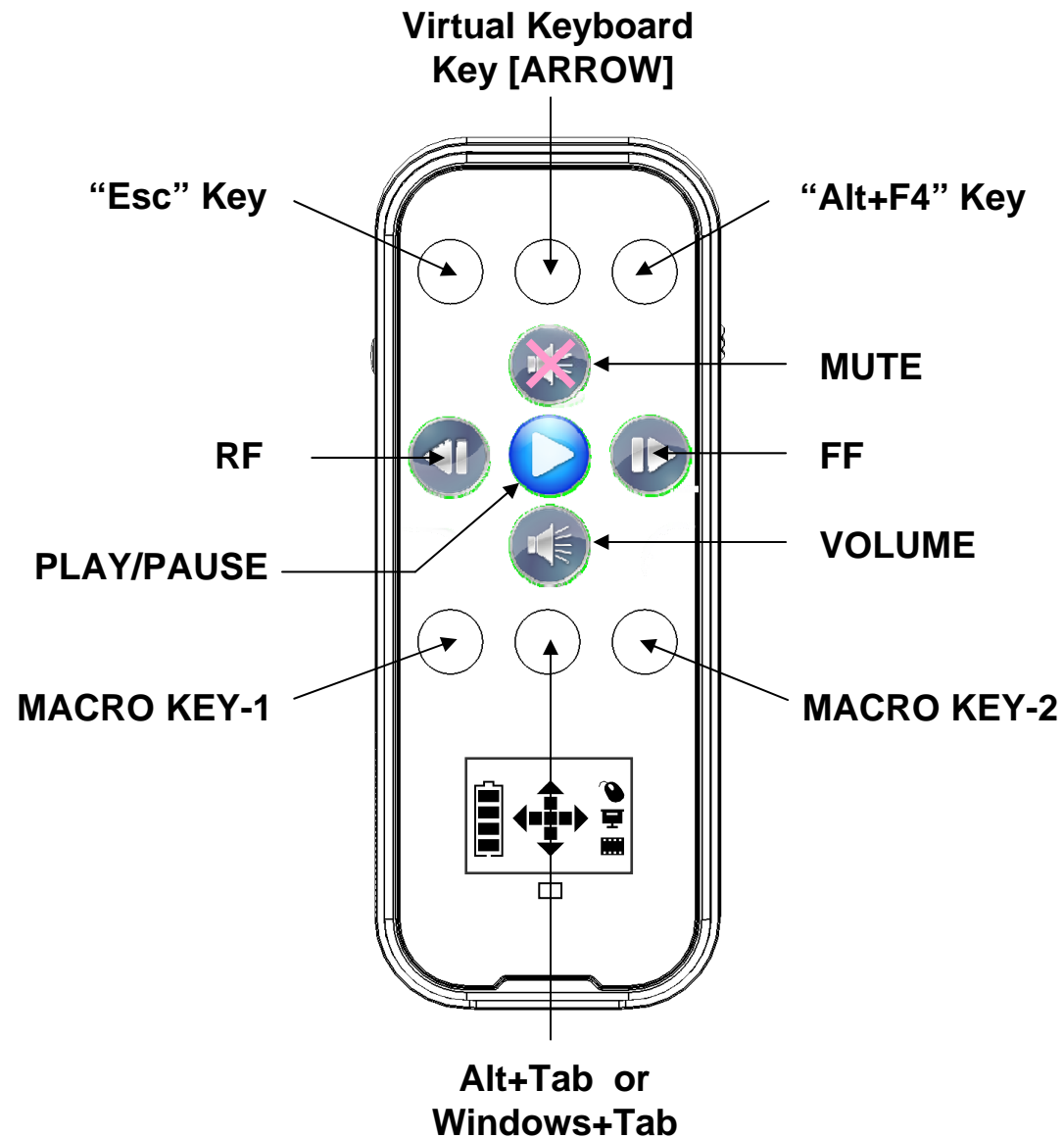
Key Feature-1 : MOUSE



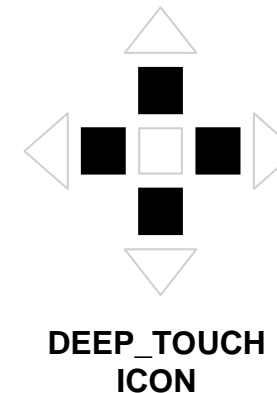
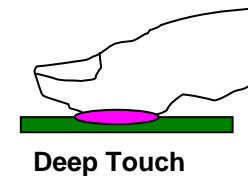
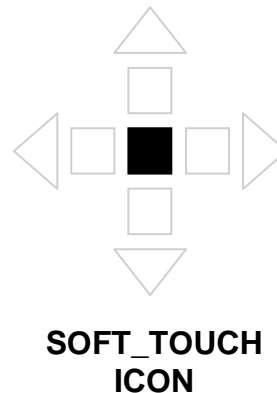
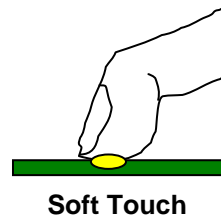
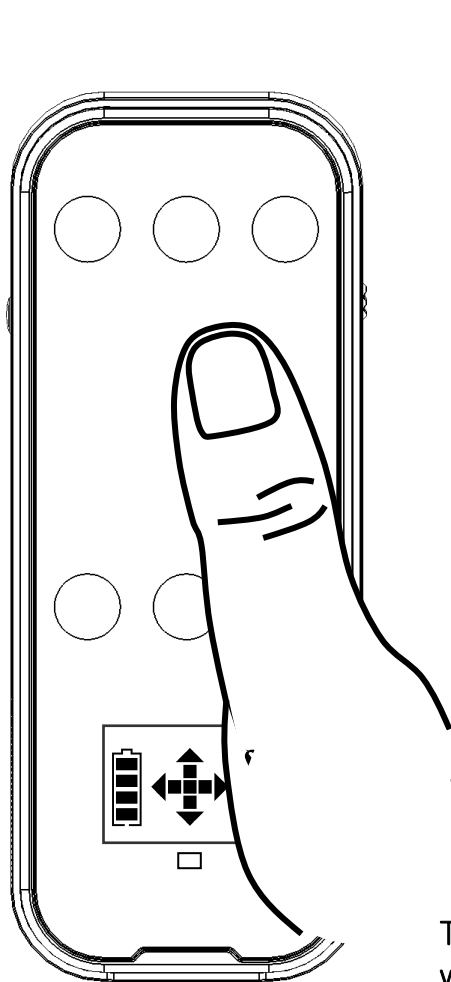
Key Feature-2 : PRESENTATION



Key Feature-3 : MULTIMEDIA CONTROL



Thumb Gesture : Soft Touch / Deep Touch



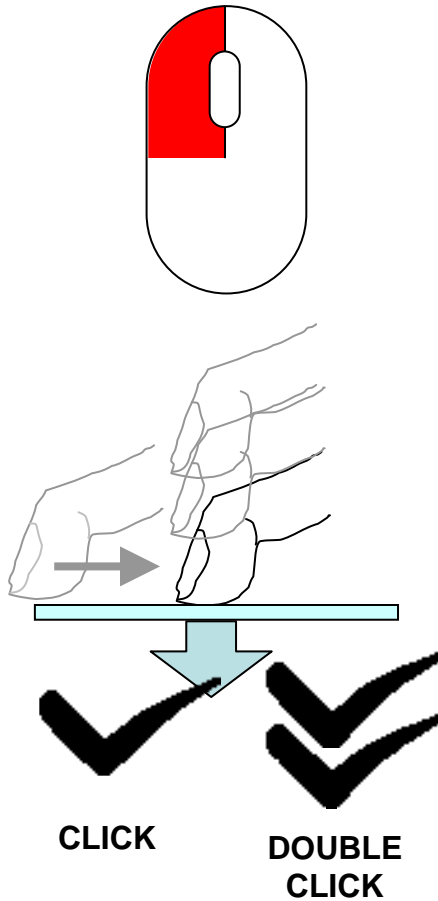
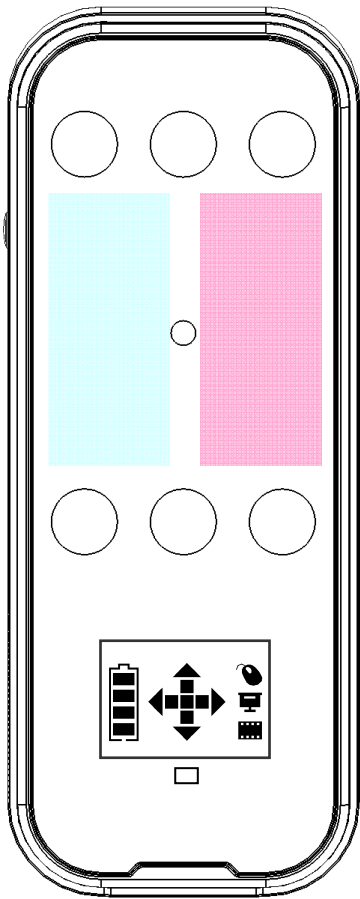
* Deep Touch : Touch widely

Soft Touch and Deep Touch is selected according to the size of touch area.

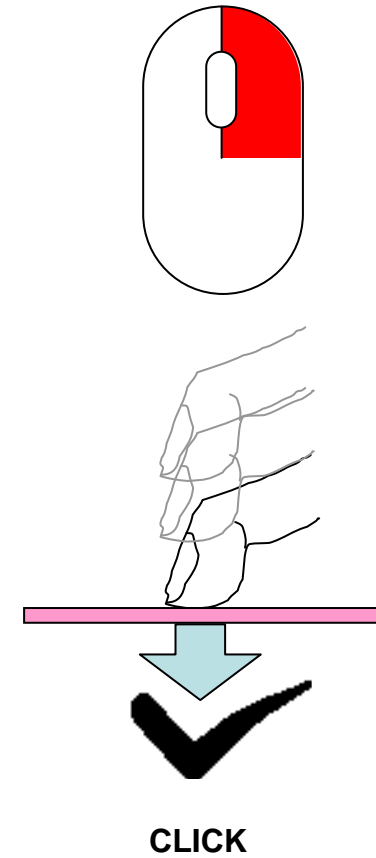
- **Soft Touch** : Mouse Pointing, L/R Click of mouse.
- **Deep Touch** : Gesture fuction(Scroll, page moving etc.)

To change into Soft Touch Mode from Deep Touch Mode easily, move some distance without any click. (When LCD screen and dedicated software is installed, you can see the icon on the PC monitor.)

Thumb Gesture : CLICK

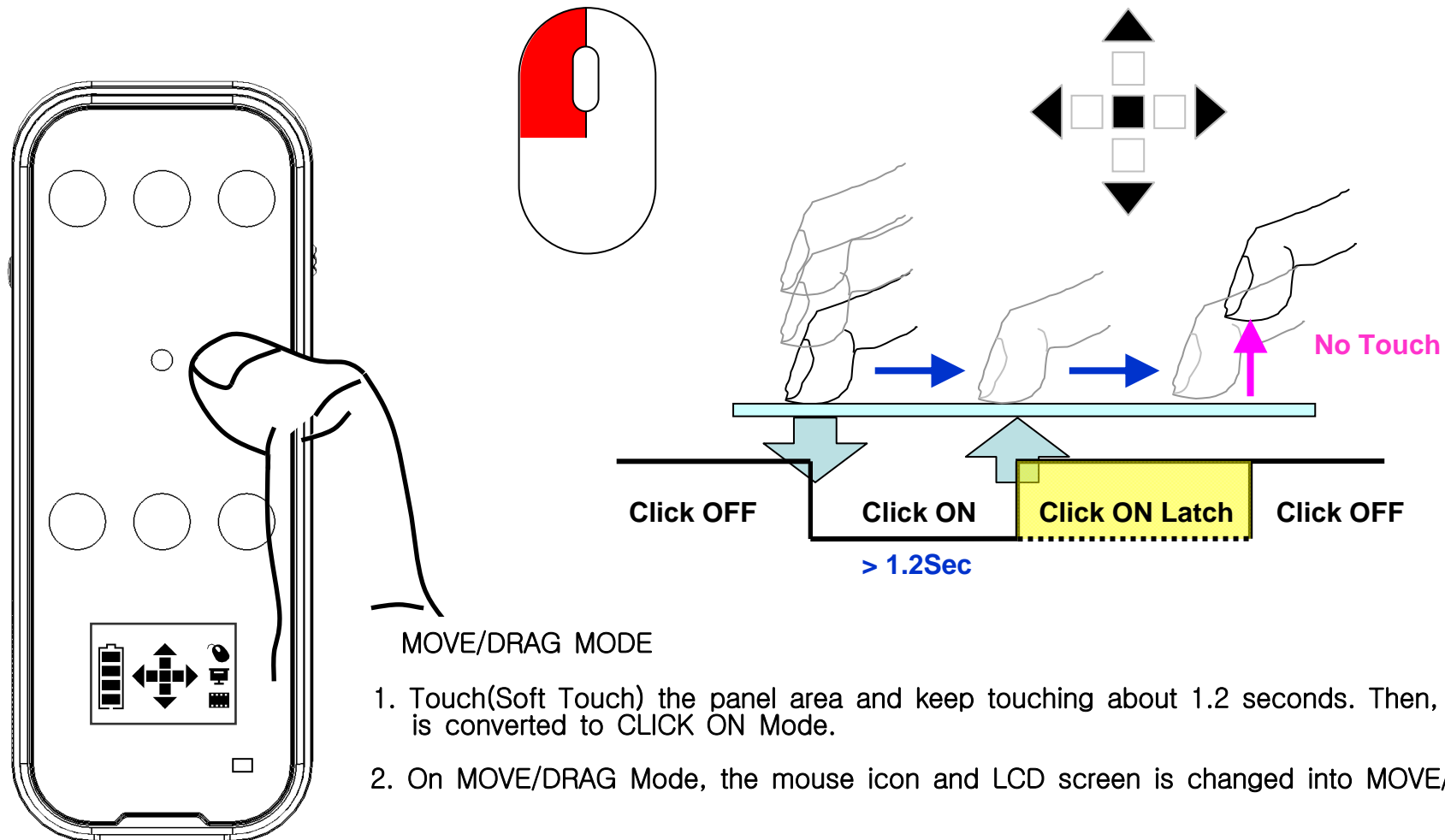


Blue area(Left area)
: Touch(Soft Touch) the left area
and click it at the same time.

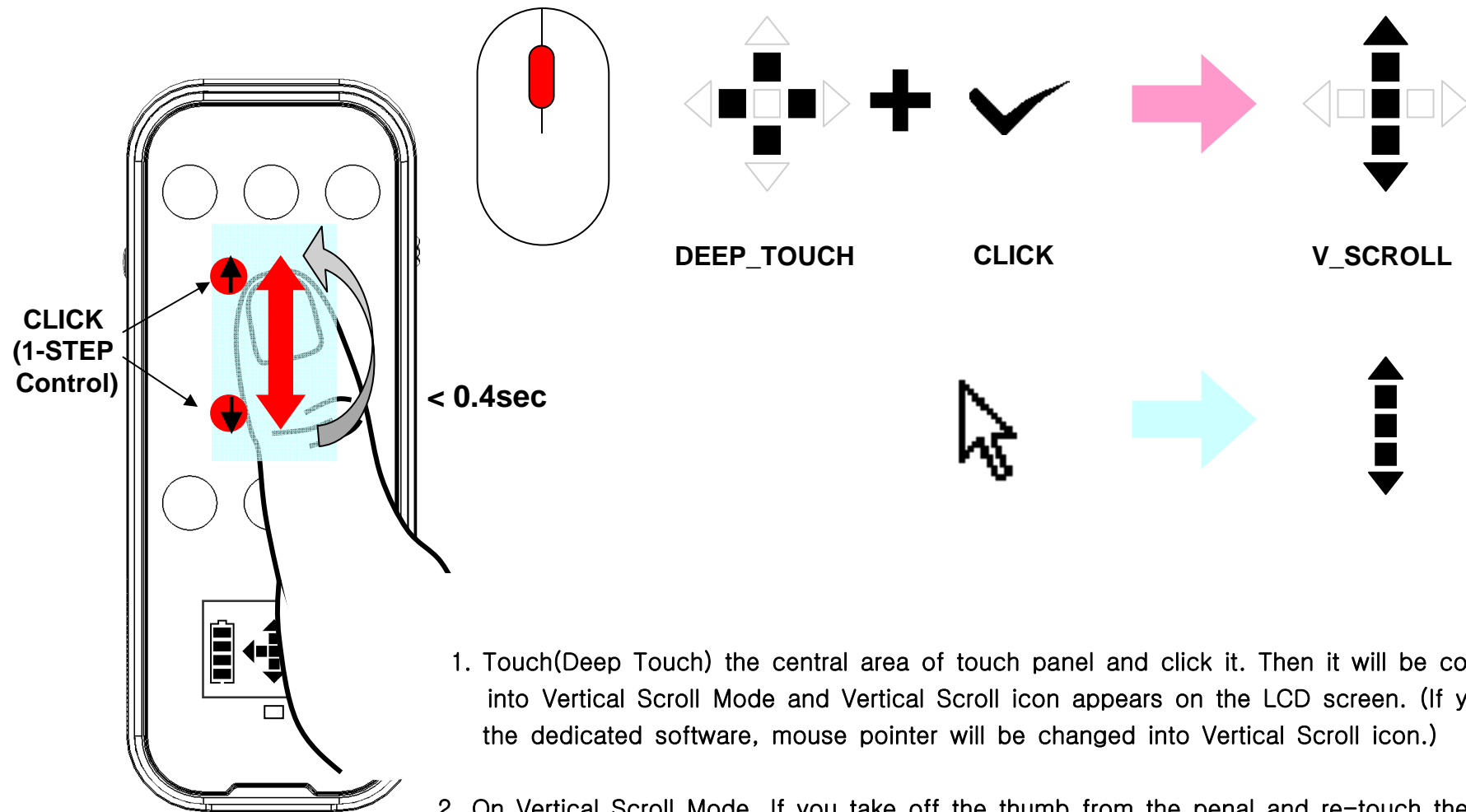


Red area(Right area)
: Click the right area.

Thumb Gesture : MOVE/DRAG

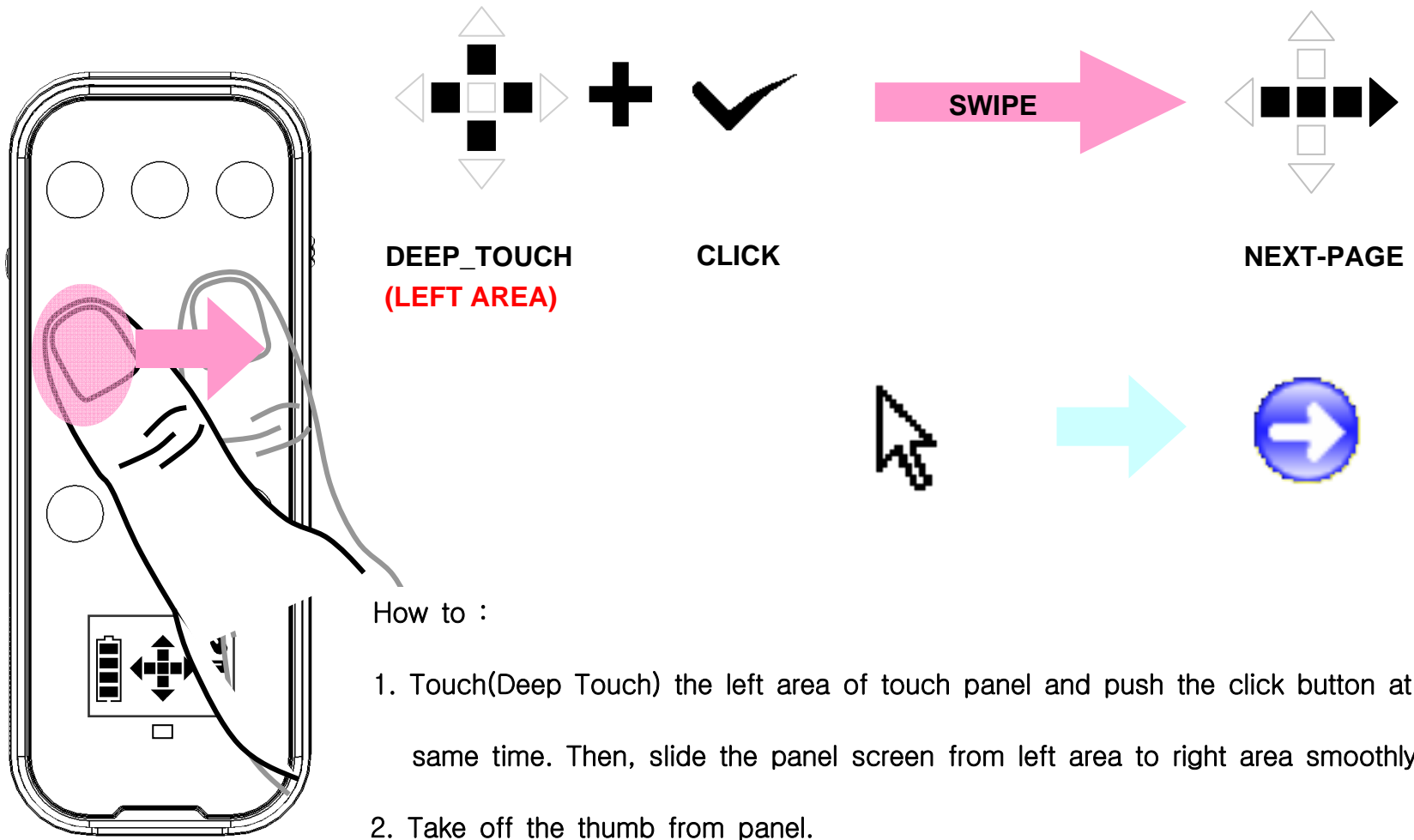


Thumb Gesture : Vertical SCROLL

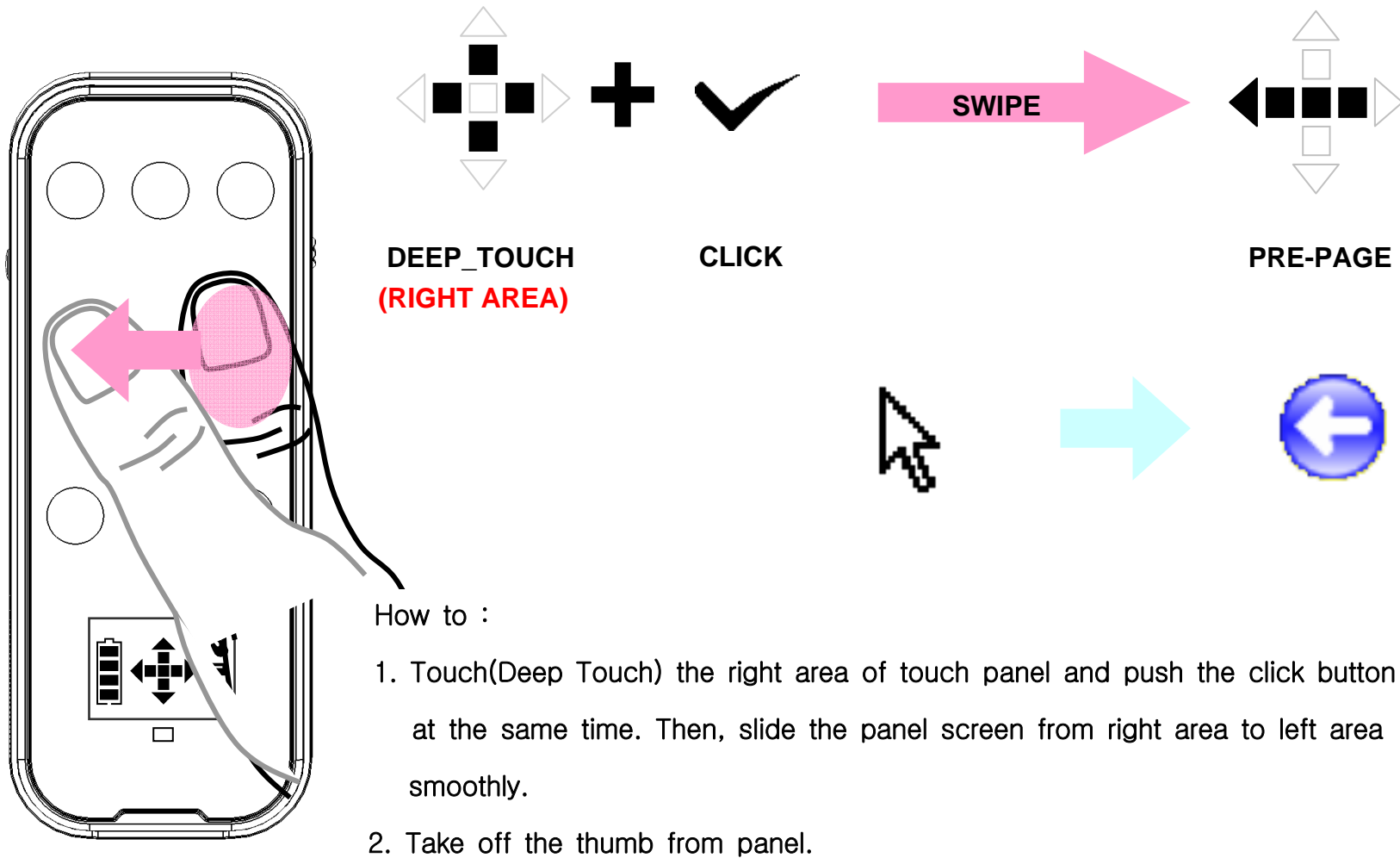


1. Touch(Deep Touch) the central area of touch panel and click it. Then it will be converted into Vertical Scroll Mode and Vertical Scroll icon appears on the LCD screen. (If you install the dedicated software, mouse pointer will be changed into Vertical Scroll icon.)
2. On Vertical Scroll Mode, If you take off the thumb from the panel and re-touch the panel about 0.4 seconds, Vertical Scroll Mode will be maintained. On Scroll Mode, you may use Soft Touch instead of Deep touch.
3. Turn Off Vertical Scroll Mode :
 - Take off the thumb from the panel about 0.8 seconds
 - Touch the same area repeatedly and take off the thumb.

Thumb Gesture : Next Page

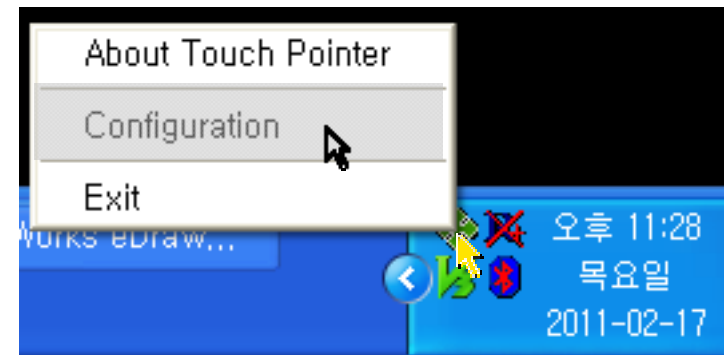


Thumb Gesture : Pre Page

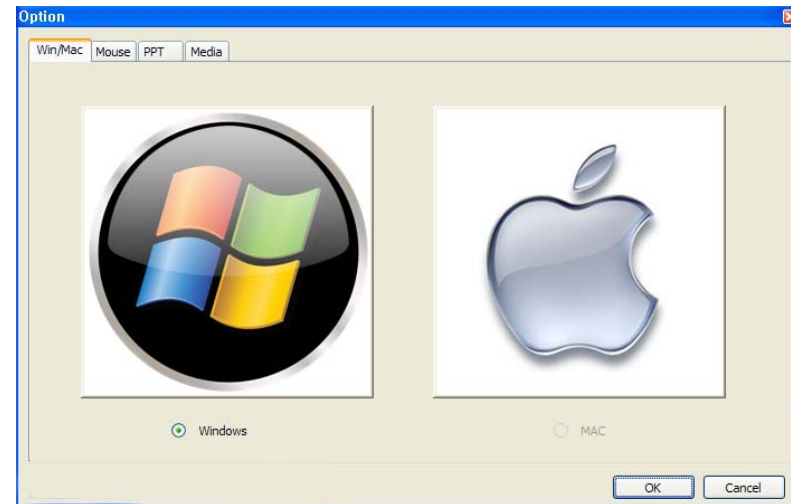


Application Software

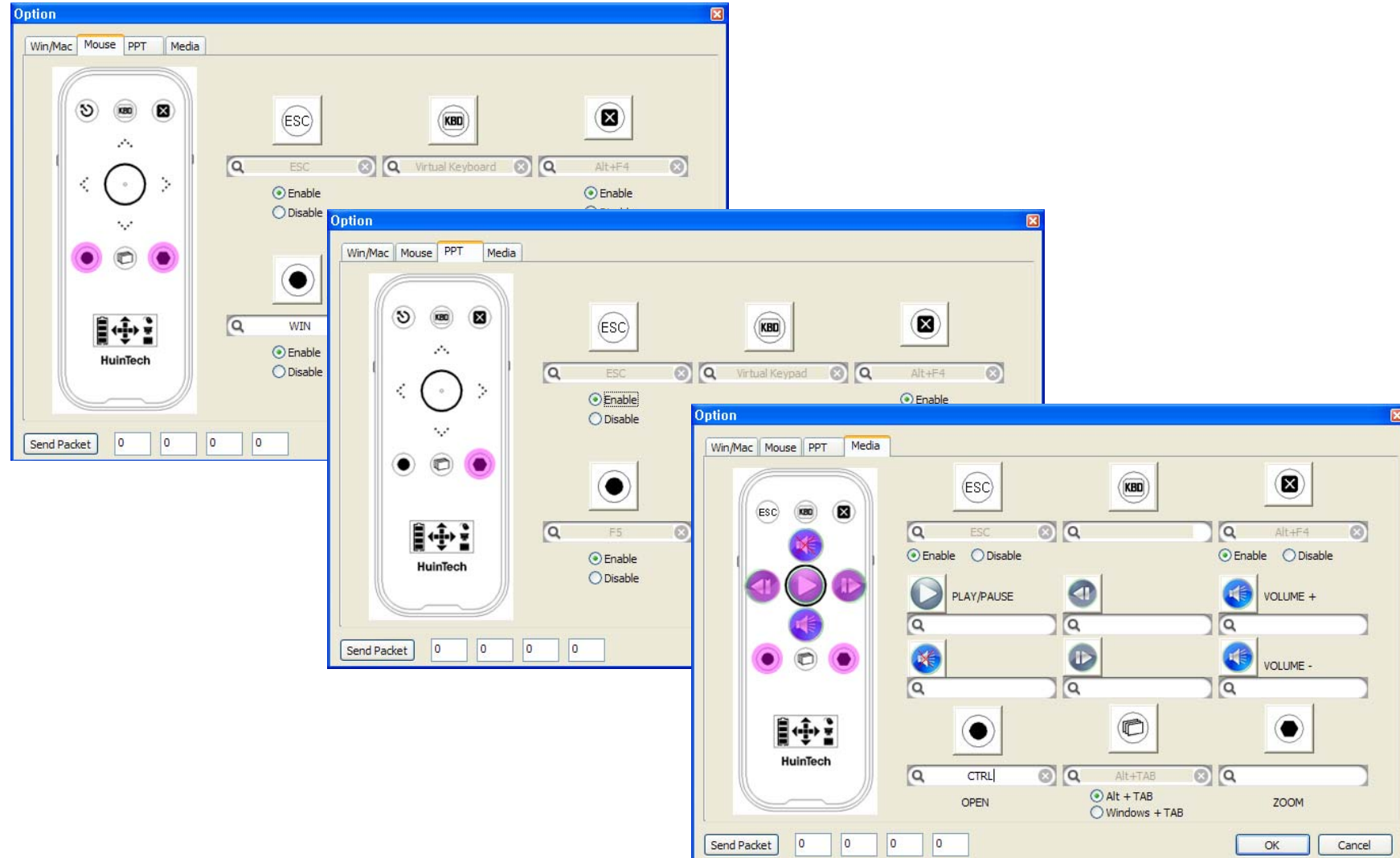
Install Application Software



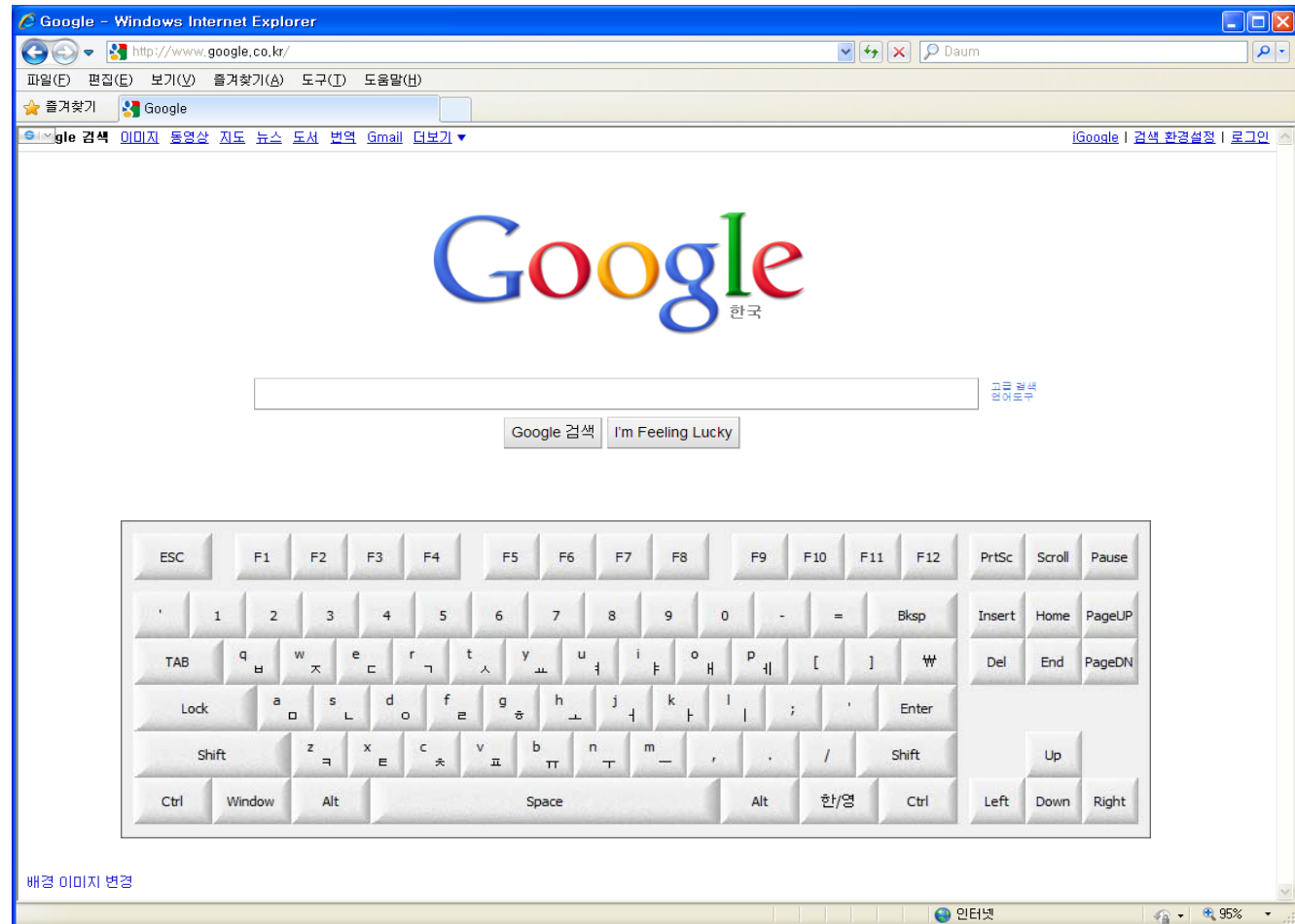
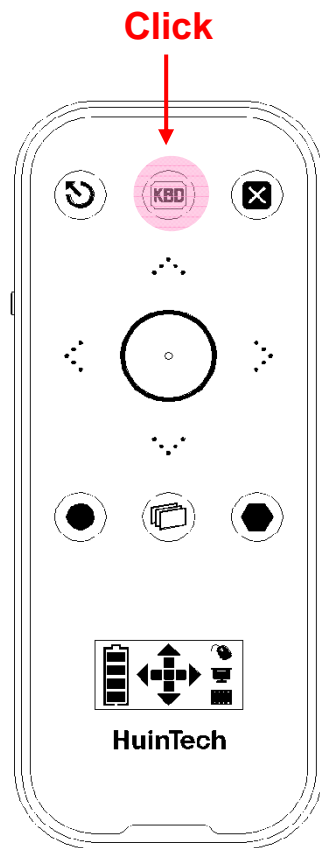
Mouse Right-Click



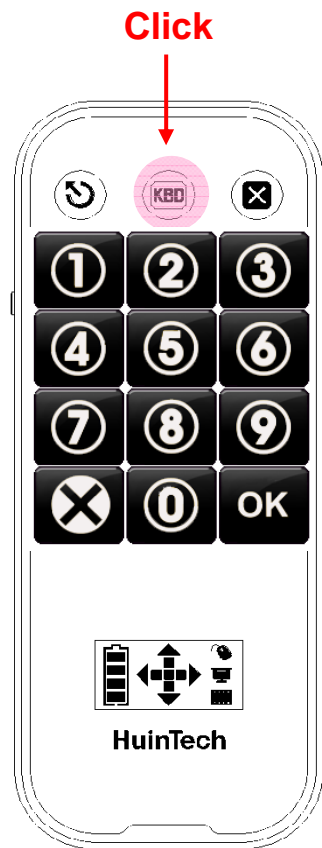
Application Software : Macro Key Setup



Virtual Keyboard : Qwerty @Mouse Mode



Virtual Keyboard : Numeric @Presentation Mode



Page Jump

FCC ID: ZXETP-140B**FCC Part 15.19**

This device complies with part 15 of the FCC Rules. Operation is subject to The following two conditions: (1) This device may not cause harmful interference, and (2) this device must accept any interference received, including interference that may cause undesired operation.

FCC Part 15.21

Any changes or modifications (including the antennas) made to this device that are not expressly approved by the manufacturer may void the user's authority to operate the equipment.

RF Exposure Statement (2.1091)

FCC RF Radiation Exposure Statement: This equipment complies with FCC RF Radiation exposure limits set forth for an uncontrolled environment.

This device and its antenna must not be co-located or operating in conjunction with any other antenna or transmitter.

This equipment should be installed and operated with a minimum distance of 20 centimeters between the radiator and your body.

Part 15.105 (B)

Note : This equipment has been tested and found to comply with the limits for a Class B digital device, pursuant to part 15 of the FCC Rules. These limits are designed to provide reasonable protection against harmful interference in a residential installation This equipment generates, uses and can radiate radio frequency energy and, if not installed and used in accordance with the instructions, may cause harmful interference to radio communications, However, there is no guarantee that interference will not occur in a particular installation. If this equipment does cause harmful interference to radio or television reception, which can be determined by turning the equipment off and on, the user is encouraged to try to correct the interference by one or more of the following measures:

- Reorient or relocate the receiving antenna.
- Increase the separation between the equipment and receiver.
- Connect the equipment into an outlet on a circuit different from that to which the receiver is connected.
- Consult the dealer or an experienced radio/TV technician for help.

Modifications not expressly approved by the manufacturer could void the user's authority to operated the equipment under FCC rules.