

# User Manual

For Windows and Macintosh OS



## Precautions

1. Please read this manual carefully before using, and keep it well for future reference.
2. Before cleaning the tablet please unplug the power cord and wipe with a soft damp cloth, do not use any kind of detergents.
3. Don't expose this product to water or other liquids. Take care to never spill liquids onto the tablet and pen. Exposing this product to water or other liquids may cause product malfunction or electrical shock.
4. Do not place the tablet on a place which is unstable or children can easily reach to prevent it from falling from a height to avoid danger. Prevent children from swallowing the pen nib or side switch. The pen nib, side switch, or other movable parts may accidentally be pulled out if children are biting on them.
5. Power off your tablet in locations where/when electronic devices is not allowed. Because the tablet may cause other electronic devices to malfunction in some locations where/when the use of electronic devices is not allowed, such as within an airplane, be sure to turn off the tablet.
6. To protect your tablet and saving power, please switch off the power when it is not in use.
7. Do not disassemble the tablet and pen. Do not disassemble or otherwise modify the tablet or pen. Such action may cause heat generation, ignition, electronic shock, or other damage, including human injury. Disassembly of the product will void your warranty.
8. While getting the components replaced, you are supposed to guarantee that the repairman is using the substitute components specified by the manufacture. Unauthorized component replacement might cause fire, electric shocks or other dangers.
9. Do not insert foreign material into the USB port or any other opening of this product. If a metal object or foreign material is inserted into a port or other opening of this product it may cause the product to malfunction or burn out, or cause electronic shock.
10. Tablet and Digital pen has a lithium battery, which should be charged in time when low battery, and at the same time should be charged every 3 months, otherwise it will cause lithium battery damage.
11. The nib of the digital pen can't be pressed when it is placed, otherwise the pen can't enter the power-saving state, which is easy to cause lithium battery over-discharge damage.

## Contents

1. Tablet Overview.....	3
1.1 Tablet Introduction.....	3
1.2 Product and Accessories .....	3
1.3 Tablet Connection.....	5
1.4 Driver Installation.....	6
1.5 Pen Nib Replacement.....	7
1.6 Charging the Pen .....	7
2. Product Basic Operation.....	8
2.1 Using The Pen .....	8
2.2 Using the Tablet .....	10
3. Function Setting.....	12
3.1 Device Connection Prompt.....	12
3.2 Working Area Setting .....	12
3.3 Press Keys Function Setting .....	14
3.4 Pen Button Setting .....	14
3.5 Pressure Sensitivity Setting.....	15
3.6 Pen Pressure Testing .....	15
3.7 Enable the Windows Ink feature.....	16
3.8 Data export and import.....	16
4. Specifications .....	17
5. Trouble Shooting .....	18
5.1 Possible Breakdowns Related to TABLET.....	18
5.2 Possible Breakdowns Related to SYSTEM .....	18
6. FCC Notice.....	19

## 1. Tablet Overview

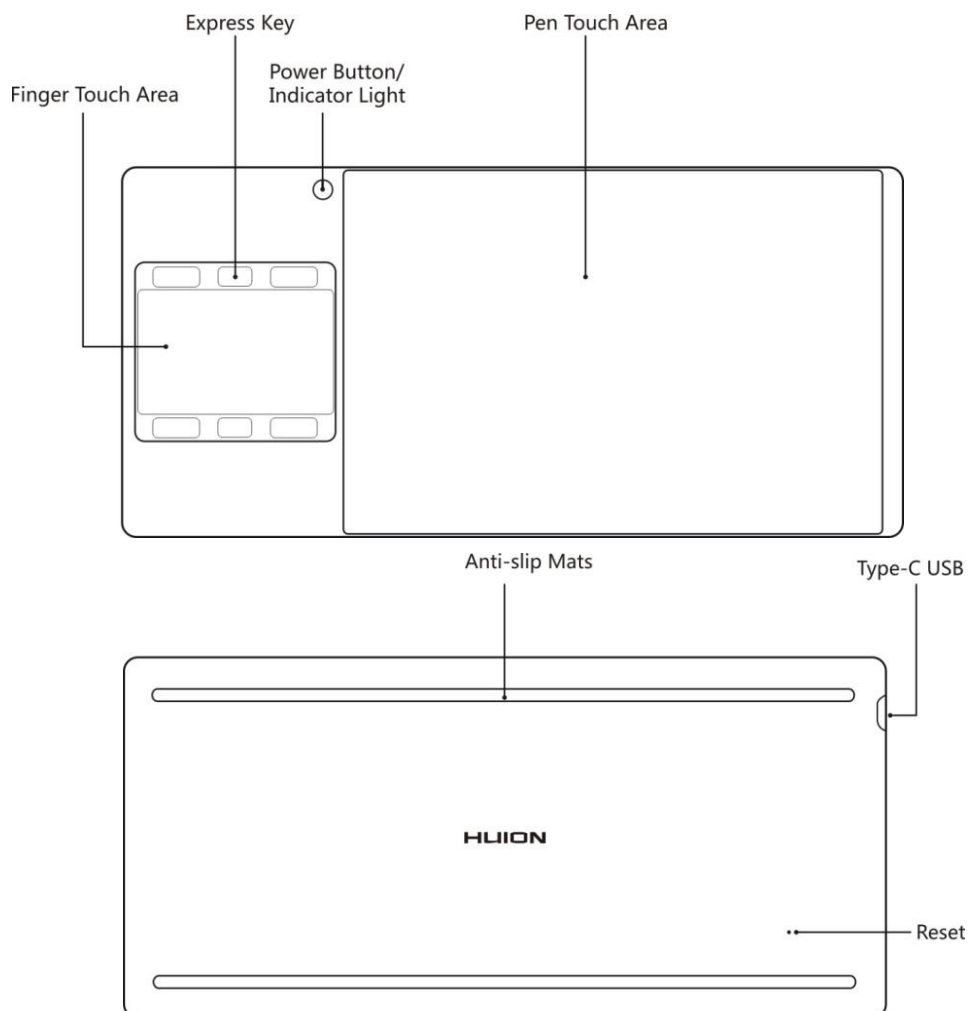
### 1.1 Tablet Introduction

Thanks for choosing HUION® INSPIROY® G10T wireless graphics tablet. This is a new generation of portable professional drawing tablet, which can greatly improve your work efficiency of painting and creation, and full of fun. You can freely painting and writing, depicting different lines and colors, just as the pen write on the paper, which brings you a real shock experience.

To give you a better understanding and using of your Inspiroy, please read this user manual carefully. The user manual only shows the information under Windows, unless otherwise noted, this information applies to both Windows and Macintosh systems.

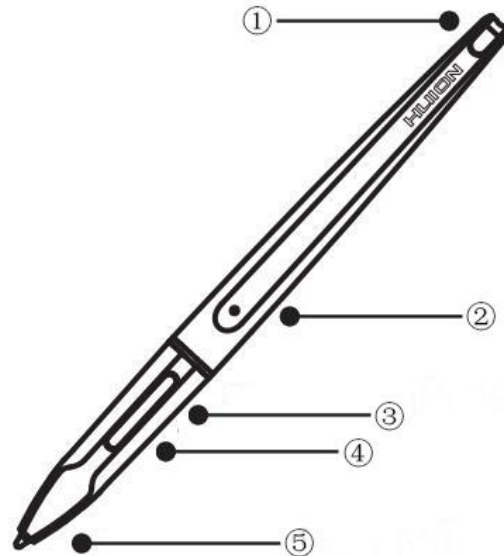
### 1.2 Product and Accessories

#### 1.2.1 INSPIROY G10T Graphics Tablet



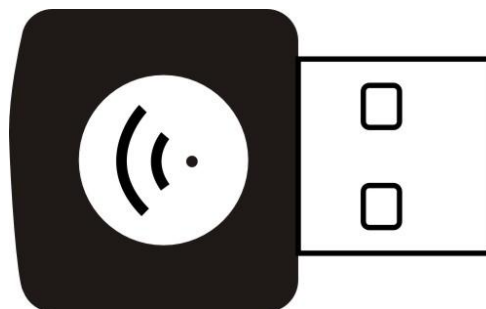
### 1.2.2 Stylus Pen

The stylus pen is a rechargeable pen with 2048 levels pressure sensitivity and can be used for 350hrs with full battery.



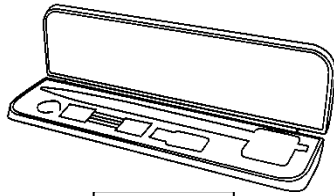
- ① Charging Port ② Charge Lamp ③ Upper Button ④ Lower Button ⑤ Nib

### 1.2.3 Wireless Receiver



When using wireless mode, please insert the receiver into your computer and unplug the USB-C cable in the same time.

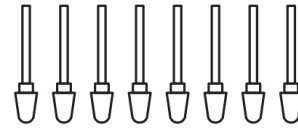
### 1.2.4 Other Accessories



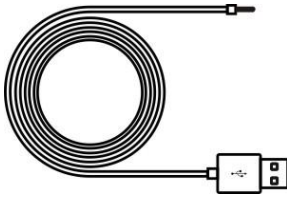
Pen Box



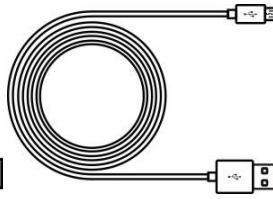
Nib Clip



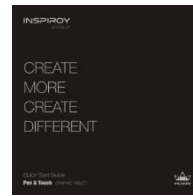
Replacement Nibs



Charging Cable



USB-C Cable



Quick Start Guide

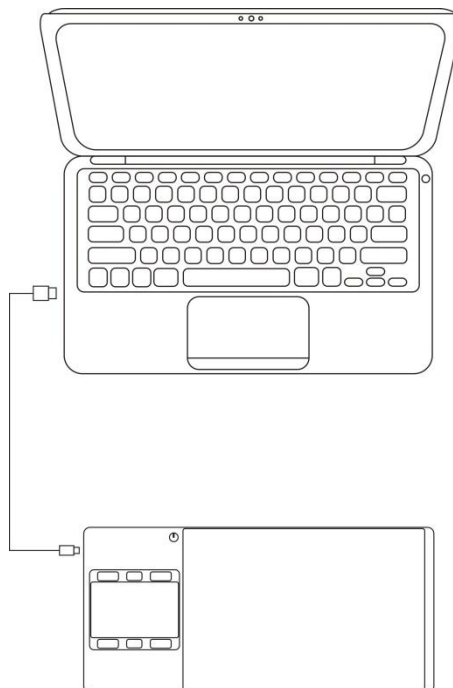


Installation CD

## 1.3 Tablet Connection

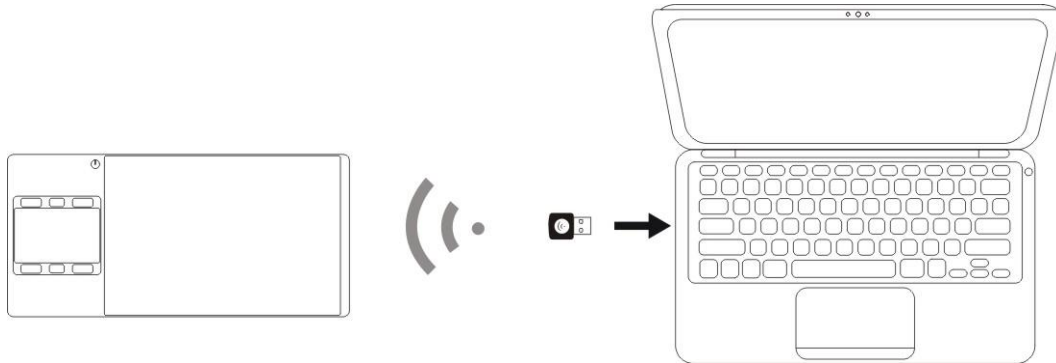
### 1.3.1 Wired Mode Connection

1. Connect to the internet(not essential).
2. Close all graphic software and anti-virus program.
3. Connect the USB-C cable to your computer.



### 1.3.2 Wireless Mode Connection

1. Insert the wireless receiver to your computer.
2. Install the driver to your computer.
3. Press the power button to power on the tablet.



## 1.4 Driver Installation

### 1.4.1 OS Support



Windows 7/ 8/ 8.1/ 10 , MAC OS X 10.10 and later

### 1.4.2 Install via CD

Open the CD folder, click driver program and finish the installation following the instruction.

### 1.4.3 Install via Download

If you don't have a CD/DVD drive, you can download the driver from our website: [www.huion.com](http://www.huion.com)

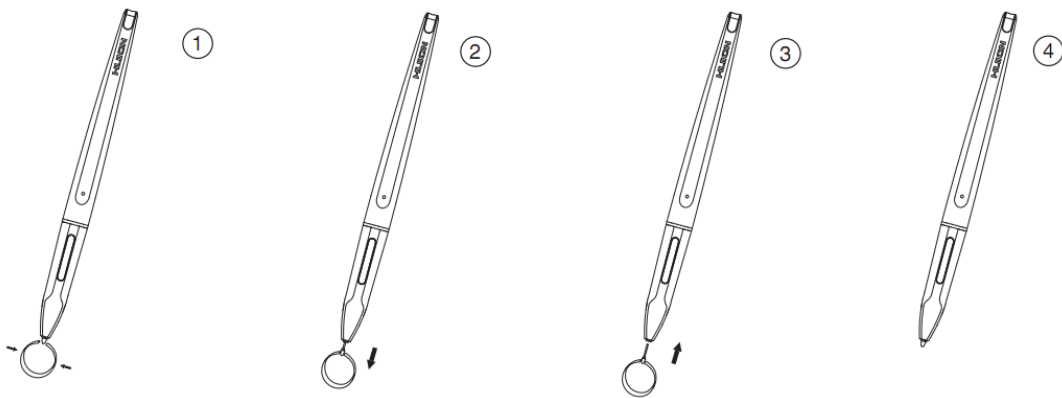
After finishing installation, you can find the driver icon  in the system tray area, which means the driver was installed successfully; When you connect the display to computer, the icon will change to color  , which means the driver has already recognized the display and you can start using it now.

#### **Notice :**

1. Before installing, you need to uninstall other driver of similar products, including the old driver of this product.
2. Before installing, please close all graphics software to avoid unnecessary mistake.
3. Before installing, please close all anti-virus software to avoid unnecessary mistake.

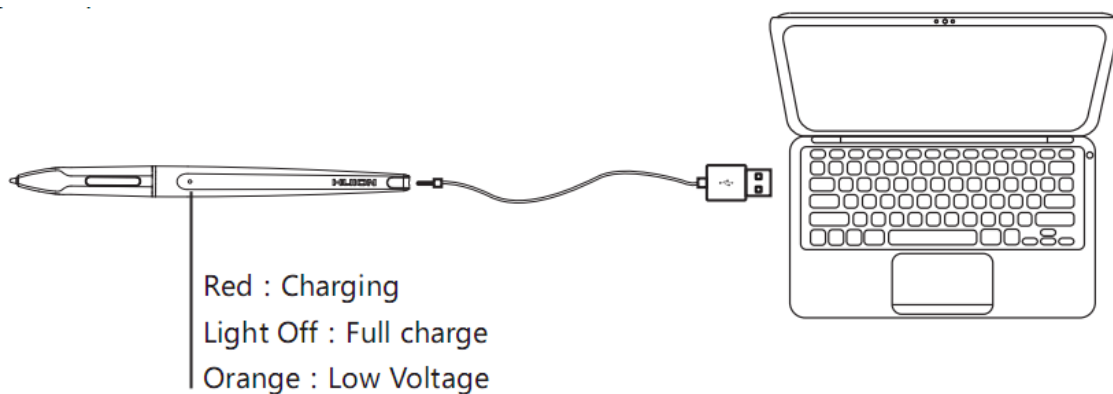
## 1.5 Pen Nib Replacement

1. The nib will be wear out after using for a long time, then you need to replace a new nib.
2. Take out the new nib and clip from pen box.
3. Clasp the old nib and pull it straight out of the pen using the nib clip.
4. Slide the end of the new nib straight into the barrel of the pen and push the nib slowly and firmly until it stops.



## 1.6 Charging the Pen

1. When the indicator on the pen shows orange, it means the voltage of the pen is low, and then you need to charge the pen.
2. Charge the pen with the attached charging cable. Insert one end of the charging cable into the rear of the stylus charging port, the other end can be connected to a computer, power supply or power bank.





## 2. Product Basic Operation

### 2.1 Using The Pen

#### 2.1.1 Hold the pen

Hold the pen as you hold a normal pen or pencil. Adjust your grip so that you can toggle the side switch easily with your thumb or forefinger. Be careful not to accidentally press the switch while drawing or positioning with the pen.

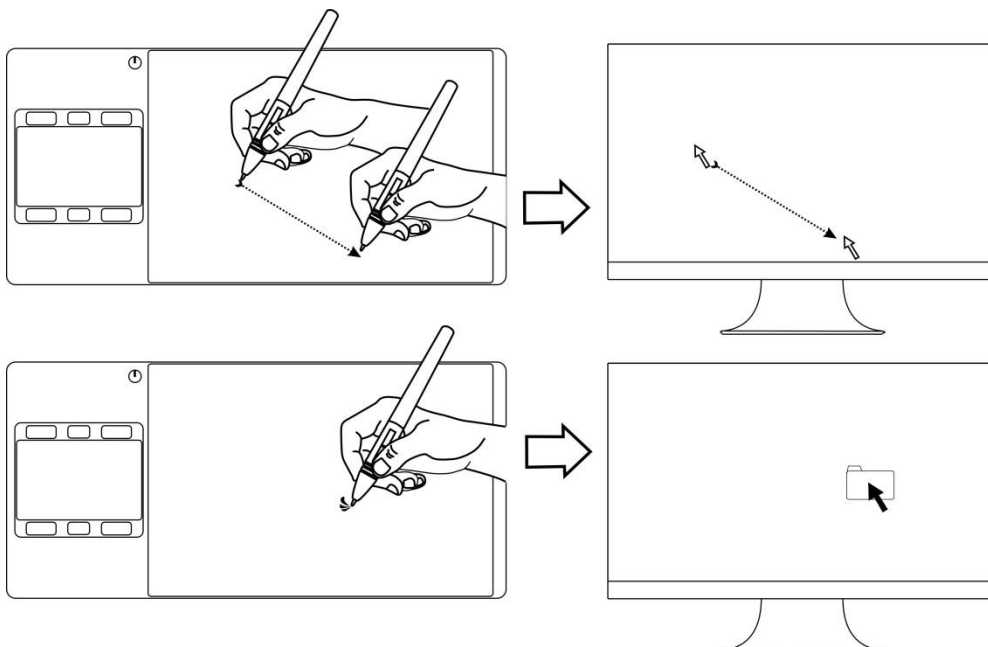


**Notice :** When not in use, place the pen in the pen case or on the desk. Do not place the pen on the surface of screen, which may interfere with the use of other screen cursor positioning equipment, may also cause your computer can not enter the sleep state.

#### 2.1.2 Position the cursor

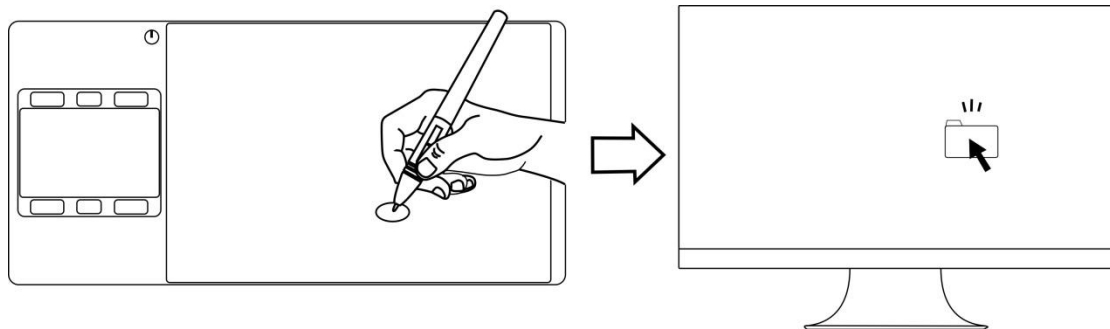
Move the pen slightly above the active area without touching the screen surface, the cursor will move to the new position accordingly.

Press the pen tip on the screen to make a selection. Tap the screen once with the pen tip, or touch it to the screen with enough pressure to register a click.



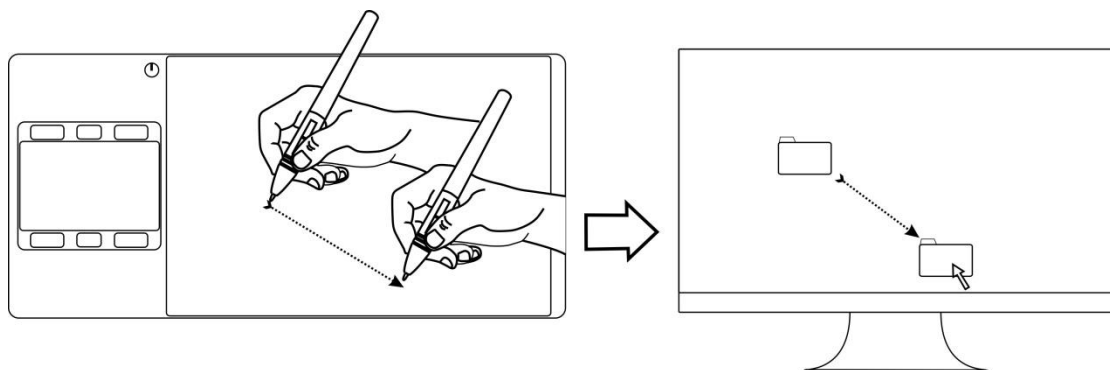
### 2.1.3 Click

Use the pen tip to tap once on the screen to produce a click. Tap to highlight or select an item on the screen and double-click to open it.



### 2.1.4 Move

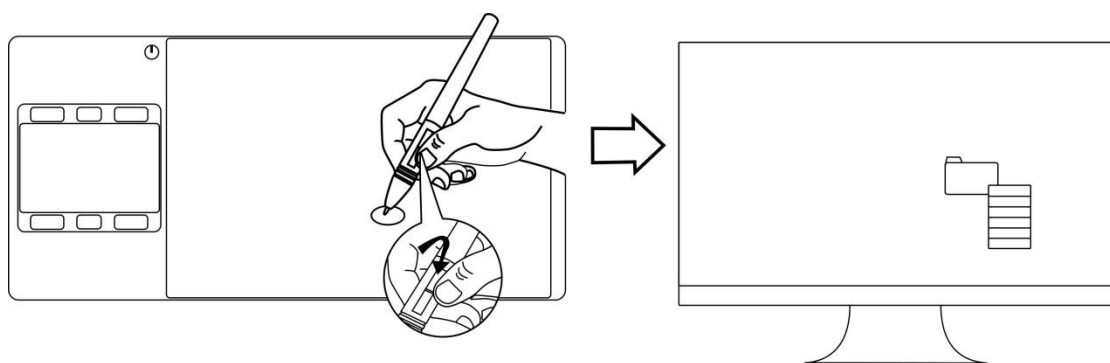
Select the object, then slide the pen across the screen to move it.



### 2.1.5 Using the side switch

The side switch of the pen can be set to two different customizable functions. You can use the side switch whenever the pen tip is within 10mm of the display active area.

You do not have to touch the pen tip to the display in order to use the switch.



## 2.2 Using the Tablet

### 2.2.1 Power Switch

1. The power switch was placed on the top left side of the tablet, when you use the tablet on wireless mode, you need to turn on the power switch before using.
2. When not use the tablet for 15 minutes or press the power button for 3 seconds, it will enter sleep mode.
3. LED indicator:

When working: **White**-detected pen or touch signal, **Off**-no pen or touch signal,

**Red flash**-Voltage is low, need to be charged.

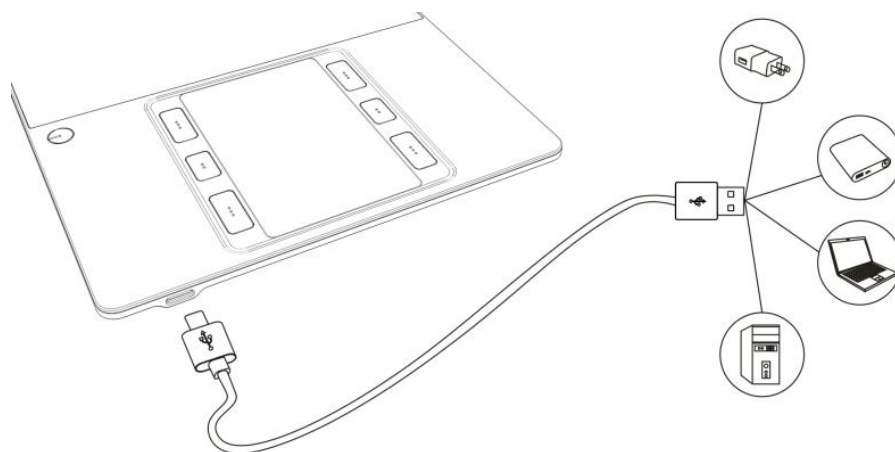
When charging: **Red**-Charging, **Off**-Full Charge.

### 2.2.2 Press Keys

There are 6 press keys on the top left side of the tablet, which you can modify the function on the driver according to your own habits, which will help to improve your work efficiency.



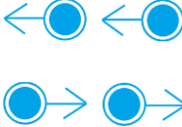
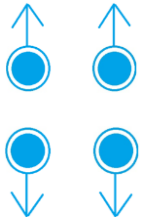
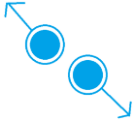
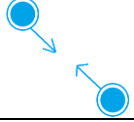
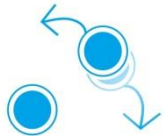
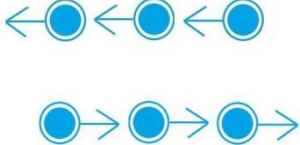

### 2.2.3 Charging

1. Before using the tablet for the first time in wireless mode, you should fully charge the tablet battery. Do this by connecting the USB cable between tablet and a primary USB port on your computer, or to a powered USB port.
2. The USB cable is used for charging the battery, and also for operating the tablet as a wired USB tablet. The battery will charge whenever the USB cable is connected and the battery is not fully charged.
3. It will take about 7 hours to fully charge an empty battery. The actual charge time depends on current battery level and tablet use while charging. The battery status indicator shows RED when charging, and will be OFF when fully charged.
4. Whenever the tablet is connected to computer with USB cable, the wireless mode will be disabled.



### 2.2.4 Touch Pad

The top left side of the tablet is provided with a touch pad, you can achieve some basic operation with simple gestures, the default functions of the gestures are as follows:

Figure	Movement	Function	Gesture
Single finger	Tap the touchpad with one finger	Simulate the left mouse button	
Two fingers	Tap the touchpad with two fingers	Simulate the right mouse button	
	Swipe left/right with two fingers	Toggles the previous / next item	
	Scroll up/down with two fingers	Scroll	
	Move two fingers apart	Zoom in	
	Pinch two fingers together	Zoom out	
	Put one finger on the bottom left corner, and another finger move toward to left/right	clockwise and Anticlockwise rotation(only support part of software)	
Three Fingers	Swipe left/right with three fingers	Switch tasks	
Four Fingers	Tap the touchpad with four fingers	Display Desktop	

Notice:

1. The above gestures only support some software
2. Some of the gestures may not working on different OS version
3. Touch function can be disabled in the driver

## 3. Function Setting

### 3.1 Device Connection Prompt

1. Device disconnected : The display didn't connected to your computer.
2. Device connected : The display has already connected to your computer.



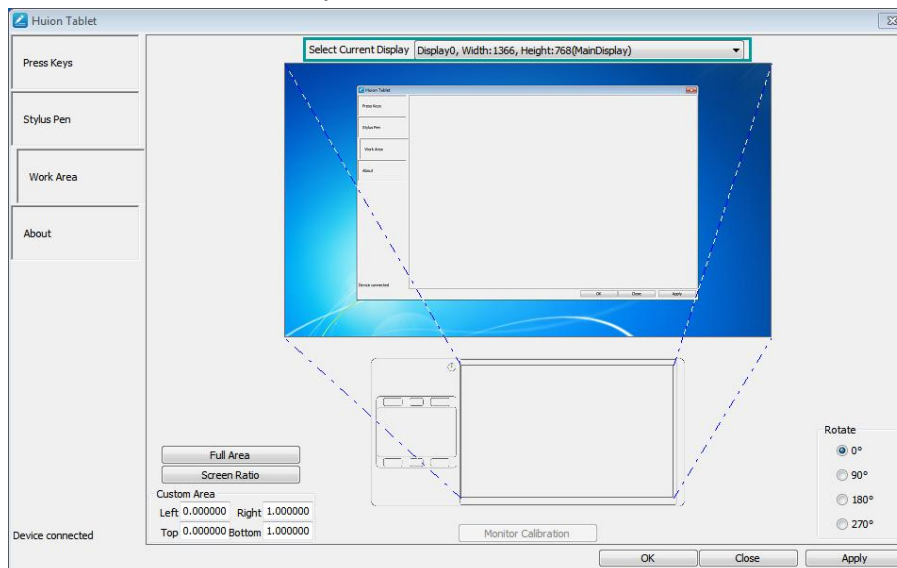
### 3.2 Working Area Setting

#### 3.2.1 Using Multiple Monitors

Select the Working Area tab to define the relationship between pen movement on the tablet and cursor movement on the monitor screen.

By default the entire active area of tablet maps to the entire monitor. If more than one monitor is in use and you are in extended mode, you need to choose on the driver which monitor your tablet will map to.

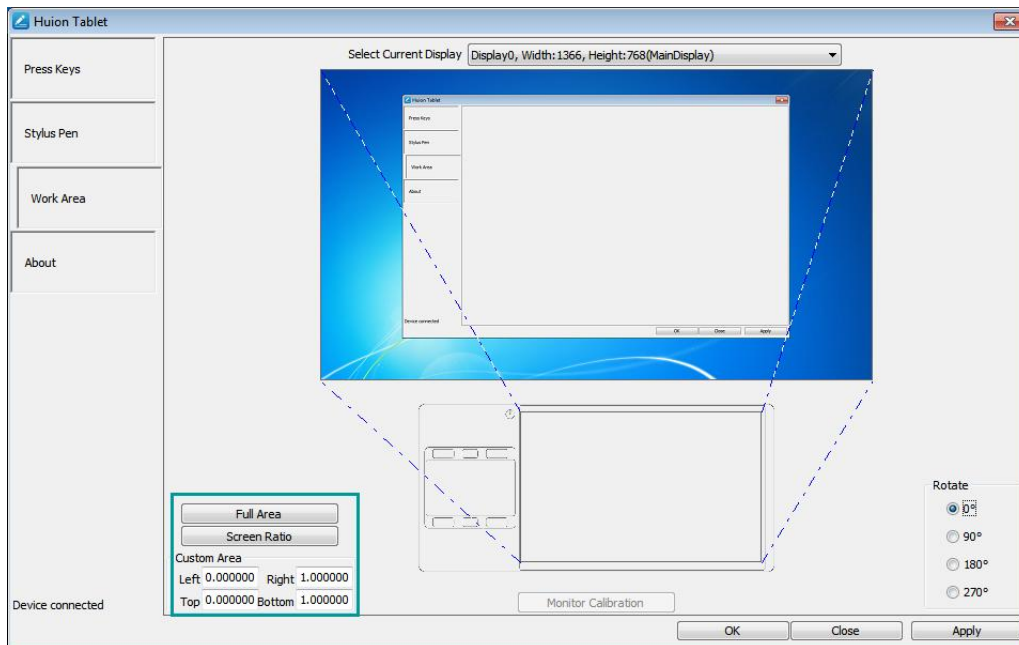
If your monitors are in mirror mode (All monitors display the same content), the tablet maps to the entire space on each monitor and the screen cursor is displayed on each monitor simultaneously.



### 3.2.2 Working Area Setting

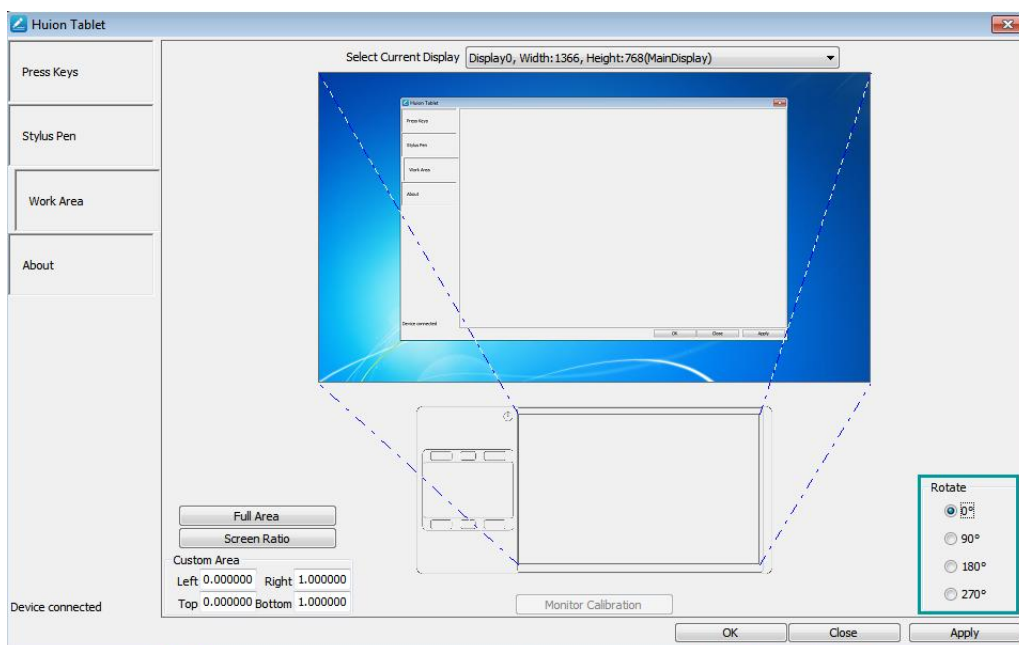
Define the tablet area that will be mapped to the screen area.

1. Full Area: the entire active area of the tablet. This is the default setting.
2. Customized Area: 1.> Enter coordinate values. or 2>. Drag the corners of the foreground graphic to select the screen area.



### 3.2.3 Rotate Working Area

By changing the direction of the tablet to adapt to the left and right hand operation. We provide four directions of choice.



### 3.3 Press Keys Function Setting

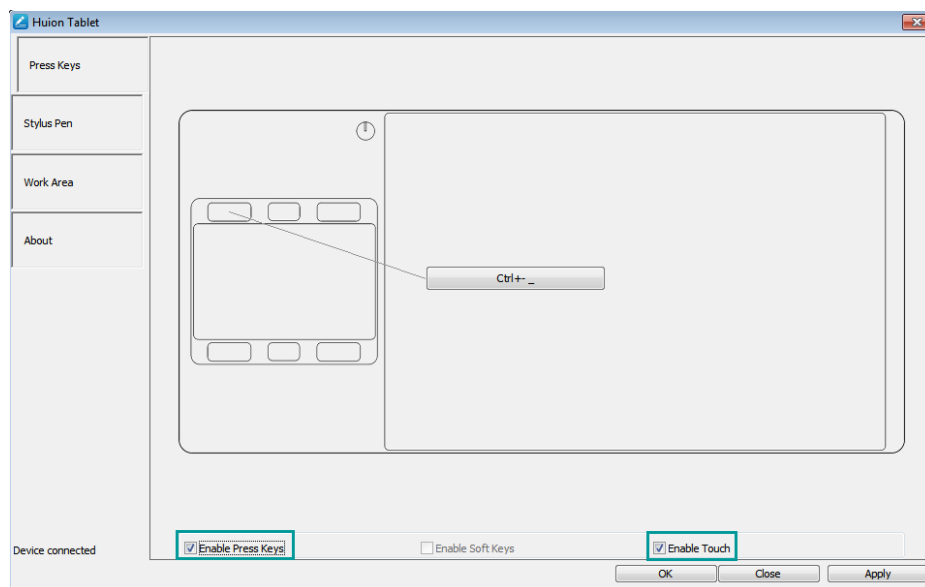
Default Setting : Place the cursor on the button or click the button icon to see the default values for the press keys

Customize Press : Select the function to be achieved on the pop-up dialog box, then click APPLY or OK to take effect.

Touch Bar : you can slide up and down to achieve zoom function.

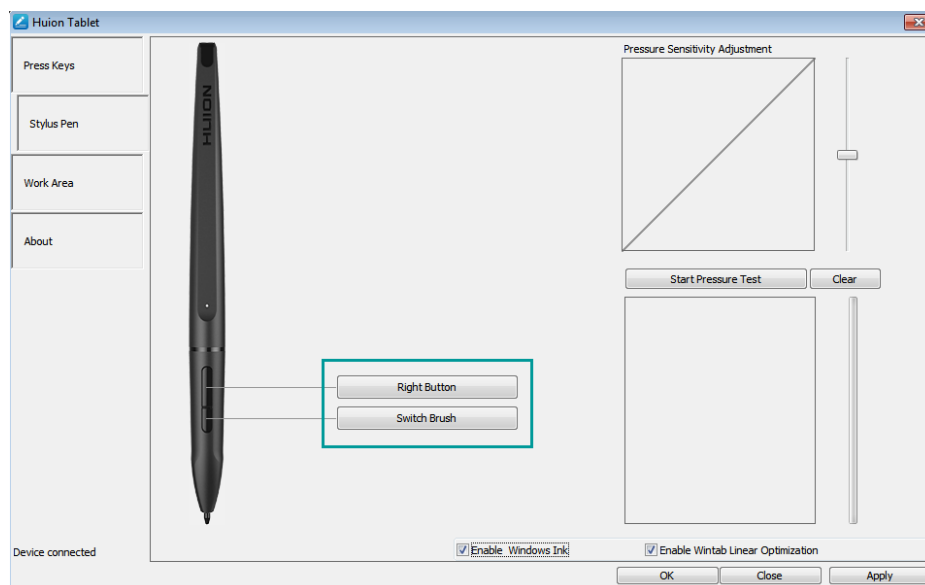
Enable/Disable Press Key: Check/Uncheck" Enable Press key"

Enable/Disable Touch Bar: Check/Uncheck" Enable Touch"



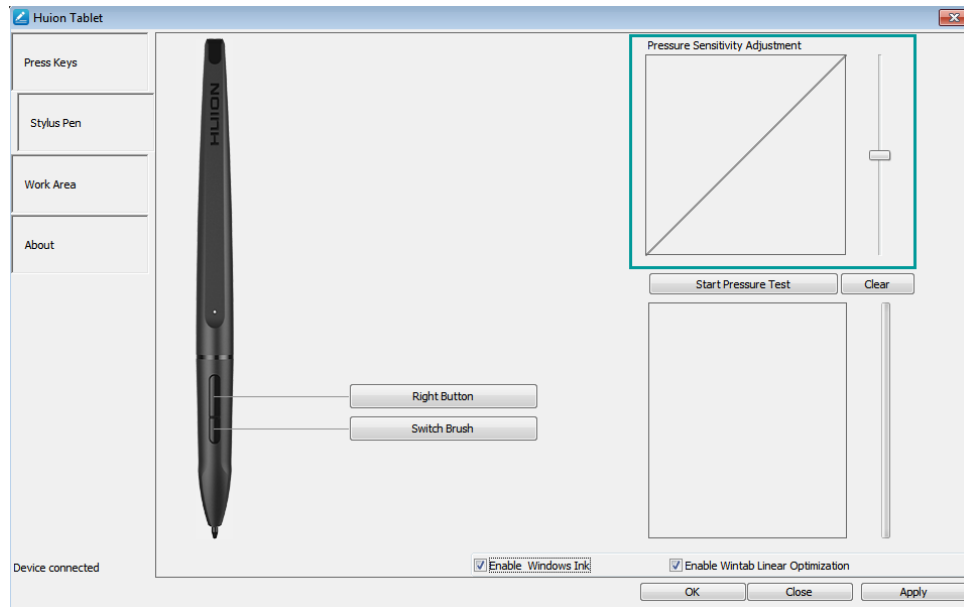
### 3.4 Pen Button Setting

Select the function to be achieved on the pop-up dialog box, then click APPLY or OK to take effect.



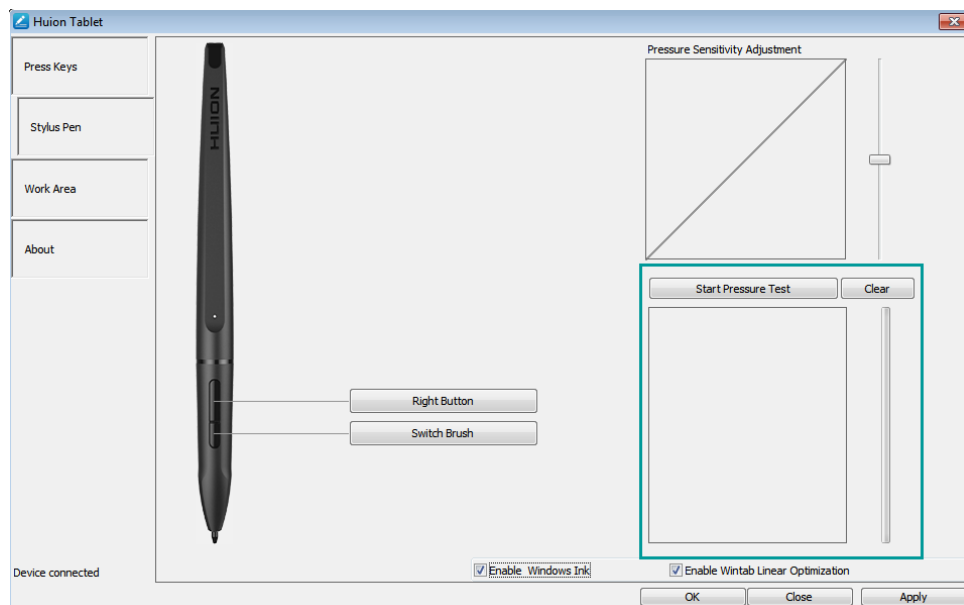
### 3.5 Pressure Sensitivity Setting

The pressure sensitivity will be changed by dragging the slider up and down, the smaller the value, the more sensitive the pressure.



### 3.6 Pen Pressure Testing

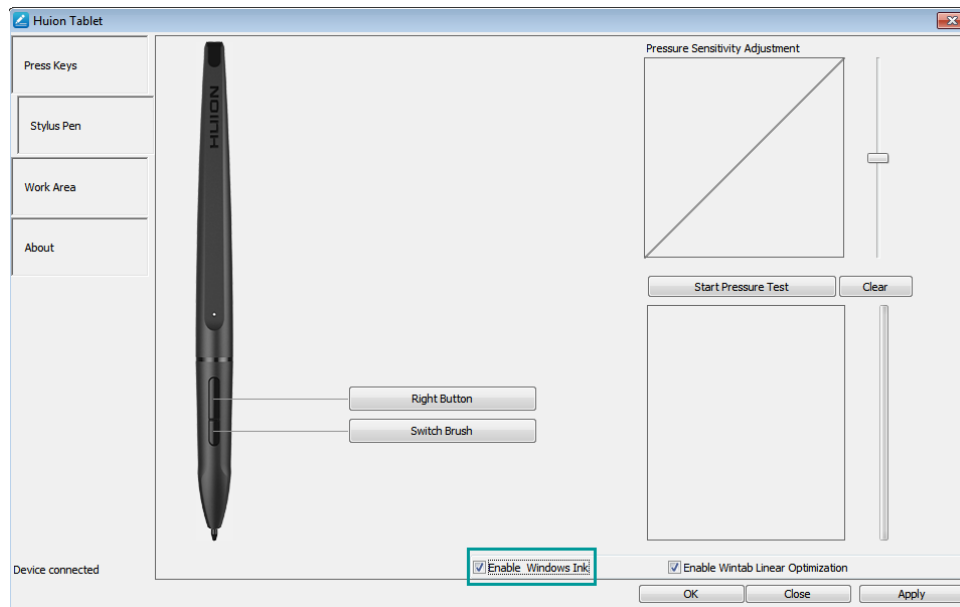
Click "start pressure test", you can gradually apply pressure to the stylus on the screen to test the pressure level. Click "Clear" button to clear all the ink.





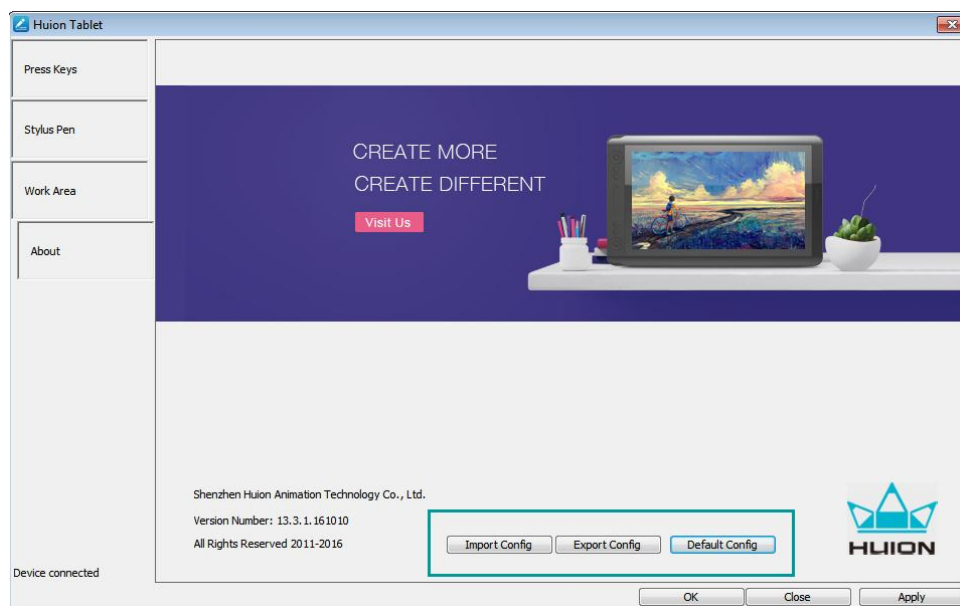
### 3.7 Enable the Windows Ink feature

Microsoft Windows provides extensive support for pen input. Pen features are supported in Microsoft Office、Windows Journal、Adobe Photoshop CC 2014、SketchBook6 or latest version



### 3.8 Data export and import

The driver supports exporting and importing your custom configuration data of the product, which is convenient for you to use different software to avoid the trouble of repeated settings.



## 4. Specifications

<b>Wireless Graphics Tablet</b>	
<b>Model</b>	G10T
<b>Touch Technology</b>	Cordless Active EMR + Capacitive Touch
<b>Working Area</b>	Pen : 254 x 158.8mm Finger : 93.6 x 59.2mm
<b>Dimension</b>	374 x 177 x 9mm
<b>Net Weight</b>	0.7kg
<b>Gross Weight</b>	1.4kg
<b>Touch Resolution</b>	5080LPI
<b>Report Rate</b>	233PPS
<b>Pen Sensing Height</b>	12mm
<b>Interface</b>	Type-C USB
<b>Press Keys</b>	6 Customized Press Keys
<b>Wireless</b>	2.4G
<b>Wireless Distance</b>	Approx. 6m
<b>Battery Capacity</b>	2500mAh
<b>Working Power Consumption ( wireless mode )</b>	Approx. 48mA
<b>Sleep Power Consumption ( wireless mode )</b>	Approx. 500uA
<b>Charge Time</b>	Approx. 7hrs
<b>Life Time</b>	Approx. 40hrs
<b>OS Support</b>	Windows 7/8/8.1/10, MAC 10.10 or later
<b>Stylus Pen</b>	
<b>Model</b>	PE150
<b>Dimension</b>	177.5 x 13.5 x 13.5mm
<b>Weight</b>	16.5g
<b>Pressure</b>	2048Levels
<b>Battery Capacity</b>	Approx. 80mAh
<b>Power Consumption</b>	Approx. 200uA
<b>Sleep Power Consumption</b>	Approx. 33uA
<b>Charge Time</b>	Approx. 1.3hrs
<b>Life Time</b>	Approx. 350hrs
<b>Automatic Sleep Time</b>	15min
<b>Pen Tilt</b>	±45°
<b>Accuracy</b>	±0.3mm

## 5. Trouble Shooting

### 5.1 Possible Breakdowns Related to TABLET

Abnormal Phenomena	Possible Solutions
While using the tablet, the battery indicator flashes red	The battery voltage is low, please recharge the tablet in time.
The pen does not work	<ol style="list-style-type: none"> <li>1. Make sure power is on</li> <li>2. Make sure you are using the pen that originally came with your tablet.</li> <li>3. Make sure the pen is with enough power, if not, please charge the pen</li> <li>4. Make sure you installed the driver correctly.</li> </ol>
The touch pad does not work	<ol style="list-style-type: none"> <li>1. Make sure the touch function was enabled in the driver.</li> <li>2. Make sure you are using the right gesture.</li> <li>3. The gestures only work on part of software</li> </ol>
Press Keys does not work	<ol style="list-style-type: none"> <li>1. Make sure the Press Keys function were enabled in the driver.</li> <li>2. Make sure you have correctly defined the Press Keys.</li> </ol>
The cursor is not stable or the drawing line is not straight when using wireless mode	<ol style="list-style-type: none"> <li>1. Make sure there is no other 2.4G device surround, cause it may affect the tablet function</li> <li>2. Make sure there is no barrier between the tablet and receiver.</li> </ol>
The computer can't enter sleep mode	When you are not using the tablet, please do not put the pen on the surface of the tablet, which will keep the computer awake.
The side button of the pen doesn't work	When pressing the side button, please make sure that the nib didn't touch the glass surface and the distance between the nib and surface is within 10mm

### 5.2 Possible Breakdowns Related to SYSTEM

Abnormal Phenomena	Possible Solutions
The computer can't recognize the tablet or the wireless receiver	Make sure the function of the USB port is normal, if not, please change to another USB port.
The tablet charging progress seems to stop whenever the computer enters sleep mode	It might because the system stops powering the USB port. Then you can adjust your system power or energy saver settings so that the computer can't enter sleep mode while the tablet is charging.

For more information, please contact us with our email: [service@huion.com](mailto:service@huion.com)

## 6. FCC Notice

This device complies with part 15 of the FCC Rules. Operation is subject to the condition that this device does not cause harmful interference (1) this device may not cause harmful interference, and (2) this device must accept any interference received, including interference that may cause undesired operation.

Any changes or modifications not expressly approved by the party responsible for compliance

could void the user's authority to operate the equipment.

NOTE: This equipment has been tested and found to comply with the limits for a Class B digital device, pursuant to Part 15 of the FCC Rules. These limits are designed to provide reasonable protection against harmful interference in a residential installation. This equipment generates, uses and can radiate radio frequency energy and, if not installed and used in accordance with the instructions, may cause harmful interference to radio communications. However, there is no guarantee that interference will not occur in a particular installation.

If this equipment does cause harmful interference to radio or television reception, which can be determined by turning the equipment off and on, the user is encouraged to try to correct the interference by one or more of the following measures:

- Reorient or relocate the receiving antenna.
  
- Increase the separation between the equipment and receiver.
- Connect the equipment into an outlet on a circuit different from that to which the receiver is connected.
- Consult the dealer or an experienced radio/TV technician for help.

FCC ID: 2AFEJ-H16WT