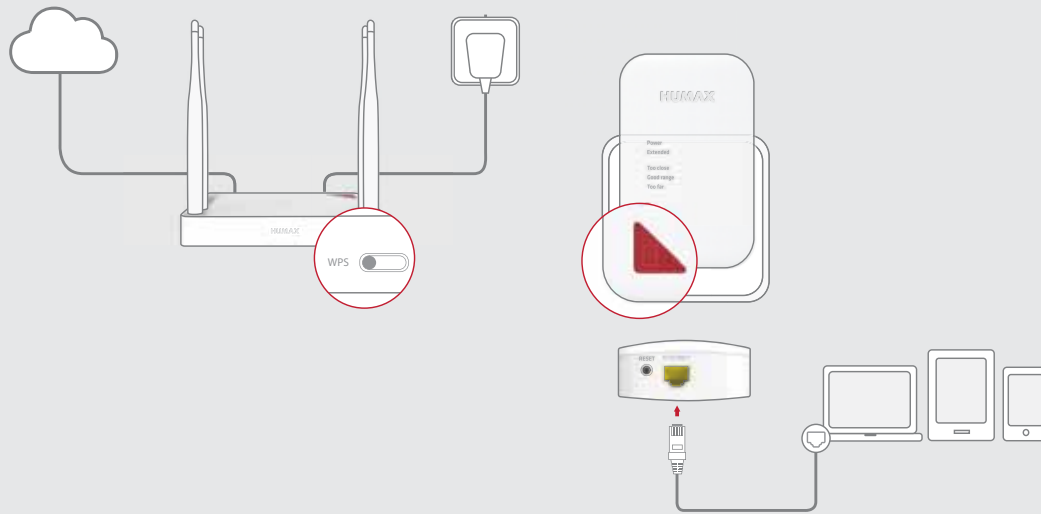


ier. More Fun.

LEDs on the Front Panel



Any Changes or modifications not expressly approved by the manufacturer void the user's authority to operate the equipment.

This device complies with part 15 of the FCC Rules. Operation is subject to the following two conditions: (1) This device may not cause harmful interference, and (2) this device must accept any interference received, including interference that may cause undesired operation.

FCC Radiation Exposure Statement:

This equipment complies with FCC radiation exposure limits set forth for an uncontrolled environment. This equipment should be installed and operated with minimum distance 20cm between the radiator and your body. This transmitter must not be co-located or operating in conjunction with any other antenna or transmitter.

Note: This equipment has been tested and found to comply with the limits for a Class B digital device, pursuant to part 15 of the FCC Rules. These limits are designed to provide reasonable protection against harmful interference in a residential installation. This equipment generates uses and can radiate radio frequency energy and, if not installed and used in accordance with the instructions, may cause harmful interference to radio communications. However, there is no guarantee that interference will not occur in a particular installation. If this equipment does cause harmful interference to radio or television reception, which can be determined by turning the equipment off and on, the user is encouraged to try to correct the interference by one or more of the following measures:

- Reorient or relocate the receiving antenna.
- Increase the separation between the equipment and receiver.
- Connect the equipment into an outlet on a circuit different from that to which the receiver is connected.
- Consult the dealer or an experienced radio/TV technician for help.

Setting up on Web Page

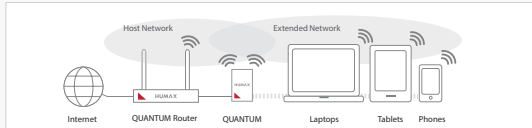
If you want to set the extender in more detail, you can set it up on your PC or mobile device.

1 Connecting Network Devices

Wirelessly connect your network devices to the extender.

Note: You need a network name and password of the extender.

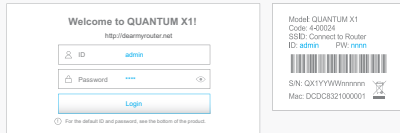
Or, you can connect your PC to the LAN port of your extender through an Ethernet cable.



2 Login to the Web

1. Open the web browser.
2. Enter <http://dearmyrouter.net> to the address bar, and then press the Enter key.
3. Enter the ID and password. The default ID and password are admin and nnnn. nnnn is the last 4 digits of serial number. Refer to the serial number at the bottom of your product.

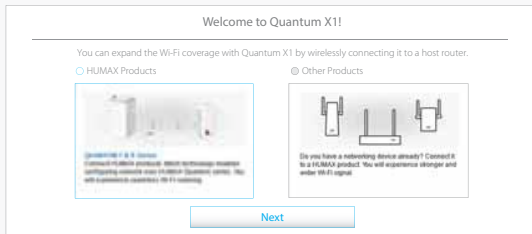
Note: We recommend you to change the ID and password to secure your network. Go to **Management > Change Password** to change your password.



3 Welcome

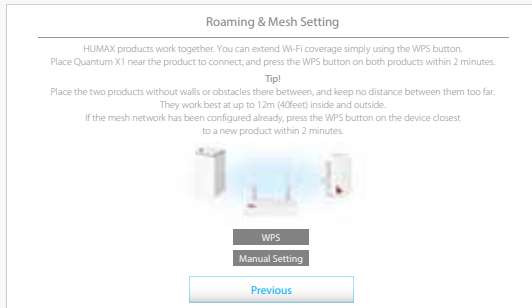
If you configure the network with **HUMAX products only**, click **HUMAX Products** and go to **4-1. Roaming & Mesh**.

If you use a third party product other than **HUMAX**, click **Other Products** and go to **4-2 Repeater**.



4-1 Roaming & Mesh

Just press the WPS buttons on HUMAX products within 1 second. Then, they are connected each other automatically, and configure the mesh network. You will experience seamless Wi-Fi roaming over the mesh network.

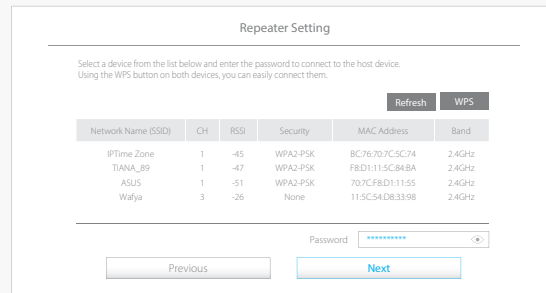


4-2. Repeater

If you have a networking device other than HUMAX products, select it from the list and then enter the password. You will experience stronger and wider Wi-Fi signal.

Click **Next** to set the connection with the host router.

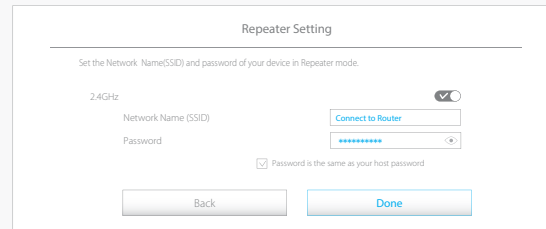
If you click **WPS** to connect to the host router automatically, **5. Extender Setting** page does not appear.



5 Extender Setting

Enter your network name and password. The default name is the same as your host network.

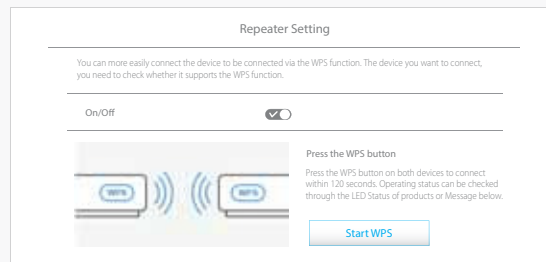
Note: We recommend the network share the same network name and password as your host network if you configure the network with HUMAX products only.



6 WPS Connection

Click **Start WPS** to configure WPS between your router and extender. When the WPS is successfully configured, the green or orange light on the Extended LED blinks slowly.

Note: You can see whether the WPS connection is successful or not on the Extender Setting page.

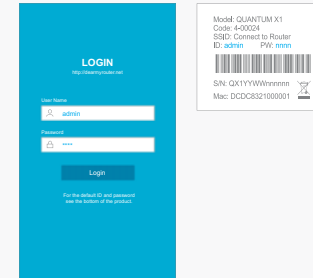


Setting up on Mobile

Login to the Mobile web

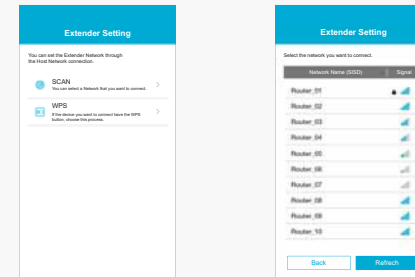
1. Open the web browser on your mobile device. If the web page does not appear, enter <http://dearmyrouter.net> to the address bar.
2. Enter the ID and password. The default ID and password are admin and nnnn. nnnn is the last 4 digits of serial number. Refer to the serial number at the bottom of your product.

Note: We recommend you to change the ID and password to secure your network. Go to **Management > Change Password** to change your password.



Connection to Host

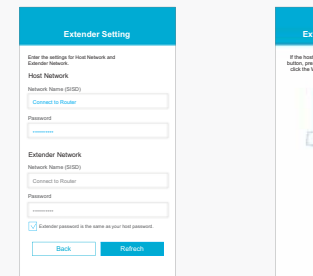
3. Tap **SCAN**.
4. Select a host network from the list and enter the password.



Extender Setting

5. Enter your network name and password. The default name is the same as your host network.

Note: We recommend the network share the same network name and password as your host network if you configure the network with HUMAX products only.



WPS Configuration

6. Click **WPS** to configure WPS between your router and extender. When the WPS is successfully configured, the green or orange light on the Extended LED blinks slowly.

