

# Ethernet Networking

## Installation & Operations Manual

531906-1EN\_A



# Accessory Manual

# Thank You!

---

Thank you for choosing Humminbird®, America's #1 name in Fishfinders. Humminbird® has built its reputation by designing and manufacturing top-quality, thoroughly reliable marine equipment. Your Humminbird® accessory is designed for trouble-free use in even the harshest marine environment. In the unlikely event that your Humminbird® accessory does require repairs, we offer an exclusive Service Policy - free of charge during the first year after purchase, and available at a reasonable rate after the one-year period. For complete details, see the separate warranty card included with your accessory. We encourage you to read this operations manual carefully in order to get full benefit from all the features and applications of your Humminbird® product.

Contact our Customer Resource Center at **1-800-633-1468** or visit our Web site at **humminbird.com**.

**WARNING!** *This device should not be used as a navigational aid to prevent collision, grounding, boat damage, or personal injury. When the boat is moving, water depth may change too quickly to allow time for you to react. Always operate the boat at very slow speeds if you suspect shallow water or submerged objects.*

**WARNING!** *The electronic chart in your Humminbird® unit is an aid to navigation designed to facilitate the use of authorized government charts, not to replace them. Only official government charts and notices to mariners contain all of the current information needed for the safety of navigation, and the captain is responsible for their prudent use.*

**WARNING!** *Disassembly and repair of this electronic unit should only be performed by authorized service personnel. Any modification of the serial number or attempt to repair the original equipment or accessories by unauthorized individuals will void the warranty.*

**WARNING!** *This product contains chemicals known to the State of California to cause cancer and/or reproductive harm.*

**NOTE:** Some features discussed in this manual require a separate purchase, and some features are only available on international models. Every effort has been made to clearly identify those features. Please read the manual carefully in order to understand the full capabilities of your model.

**NOTE:** The Ethernet accessory is compatible with many Humminbird® models, and every effort has been made to note the differences between the models and functions throughout this manual. The illustrations in this manual may look different than your display, but your model will operate in a similar way.

700 Series™, 800 Series™, 900 Series™, 1100 Series™, Cannon®, CannonLink™, Contour XD™, Down Imaging™, DualBeam PLUS™, Fish ID+™, HumminbirdPC™, Humminbird®, InterLink™, QuadraBeam PLUS™, RTS™ Window, Side Imaging®, SwitchFire™, Structure ID®, UniMap™, WeatherSense®, WhiteLine™, and X-Press™ Menu are trademarked by or registered trademarks of Humminbird®.

© 2010 Humminbird®, Eufaula AL, USA. All rights reserved.

# Table of Contents

---

<b>Introduction</b>	<b>1</b>
<b>1. Installing an Ethernet Connection</b>	<b>2</b>
<b>2. Powering On</b>	<b>7</b>
<b>3. Configuring the Ethernet Network</b>	<b>8</b>
<b>Configuration Overview</b>	<b>8</b>
Network Menu tab . . . . .	10
<b>Customize the Unit Name</b>	<b>11</b>
<b>Open the Network Source Setup Dialog Box</b>	<b>12</b>
<b>Sonar Source Overview</b>	<b>13</b>
Select a Sonar Source . . . . .	14
Change the Sonar Source . . . . .	16
<b>Temperature Source Overview</b>	<b>18</b>
Select a Temperature Source . . . . .	19
Change the Temperature Source . . . . .	22
<b>GPS and Navigation Data Overview</b>	<b>24</b>
Select a GPS Source . . . . .	25
Change the GPS Source . . . . .	27
Share Navigation Data . . . . .	28
Share Man Overboard (MOB) Navigation . . . . .	30
<b>Restore Defaults (<i>Setup Menu Tab</i>)</b>	<b>32</b>

# Table of Contents

---

<b>Troubleshooting</b>	<b>33</b>
Fishing System Doesn't Power Up. . . . .	33
Fishing System Defaults to Simulator with a Transducer Attached. . . . .	34
<b>Humminbird® Accessories</b>	<b>35</b>
<b>Contact Humminbird®</b>	<b>37</b>

# Introduction

---

This manual will guide you through the following network setup instructions:

1. Connect two Humminbird® units together
2. Power On
3. Configure your Humminbird® Ethernet Network
4. Share Navigation Data

Alarms, navigation, sonar data, waypoint management, and the menu system are all affected by the Ethernet network settings. We encourage you to read this manual completely so that you may understand the full capabilities of your Humminbird® Ethernet network.

# 1. Installing an Ethernet Connection

---

If your Humminbird® control head has a built-in Ethernet connector, the unit can be connected to the Ethernet network. When you connect the units together, data is shared between the two units.

**Before you start**, please note that the Ethernet network installation has the following requirements:

- **Update Software:** If your network includes a legacy Humminbird® model, download the latest software update from your account at **humminbird.com**. Legacy models include 858c, 898c SI, 998c SI, 958c, and 1100 Series™ units.
- **Install the control heads and sources** (GPS, transducers, temp/speed accessories, etc.) for your Fishing System. See the equipment installation guides for details.
- **Purchase Ethernet Connection Cables** (separate purchase required): Your network configuration will determine which Humminbird® connection cables you will need to purchase to connect the control heads to the network (see the ***Ethernet Cable Information*** table).

## Ethernet Cable Information

### Control Heads

### Required Cables

(2) 700 Series™ Units

(2) AS EC QDE + (1) AS EC [length]E

(1) 700 Series™ Unit &  
(1) 800/900/1100 Series™ Unit

(1) AS EC QDE + (1) AS EC [length]E

(2) 800, 900, or 1100 Series™ Units

(1) AS EC [length]E

**NOTE:** The **AS EC [length]E** cable is available in a variety of lengths. To purchase the Ethernet Connect Cables or extension cables, visit our Web site at **humminbird.com** or call our Customer Resource Center at **1-800-633-1468** for details.

### Connect the Control Heads

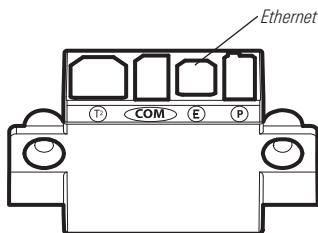
1. Confirm that the control heads are powered off.
2. **To install the Ethernet cables**, see the connection information for your network configuration as follows:
  - Two 700 Series™ Units: see **Section A**.
  - One 700 Series™ Unit & One 800/900/1100 Series™ Unit: see **Section B**.
  - Two 800, 900, or 1100 Series™ Units: see **Section C**.

**NOTE:** The **AS EC [length]E** cable is available in a variety of lengths. The following instructions use **AS EC 10E**, but your cable part number may be different.

**NOTE:** You may need to consult your control head installation guide for details.



## 700 Series™ Quick Disconnect Mount Cable Collector



### A. Two 700 Series™ Units

1. Insert the AS EC QDE Ethernet cable connector into the Ethernet slot on the 700 Series™ cable collector. Repeat this step for the second AS EC QDE cable.

**NOTE:** The 700 Series™ control head uses a cable collector for the Quick Disconnect Mount and the In-Dash Mount. See your control head installation guide for details.

2. Connect the AS EC 10E to each round connector on the AS EC QDE cables.
3. Hand-tighten the screw nut(s) on each cable to secure the connection. The connectors are keyed to prevent incorrect installation, so be careful not to force the connectors.

### B. One 700 Series™ Unit & One 800/900/1100 Series™ Unit

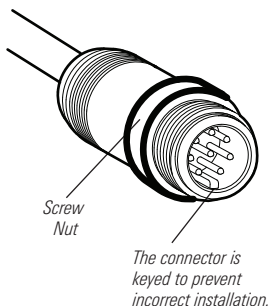
1. Insert the AS EC QDE Ethernet cable connector into the Ethernet slot on the 700 Series™ cable collector.

**NOTE:** The 700 Series™ control head uses a cable collector for the Quick Disconnect Mount or the In-Dash Mount. See your control head installation guide for details.

2. Insert one end of the AS EC 10E cable into the Ethernet port on the back of the 800/900/1100 Series™ control head. The connectors are keyed to prevent incorrect installation, so be careful not to force the connectors into the port.

3. Connect the AS EC QDE cable connector to the AS EC 10E cable connector.
4. Hand-tighten the screw nut(s) on each cable to secure the connection.

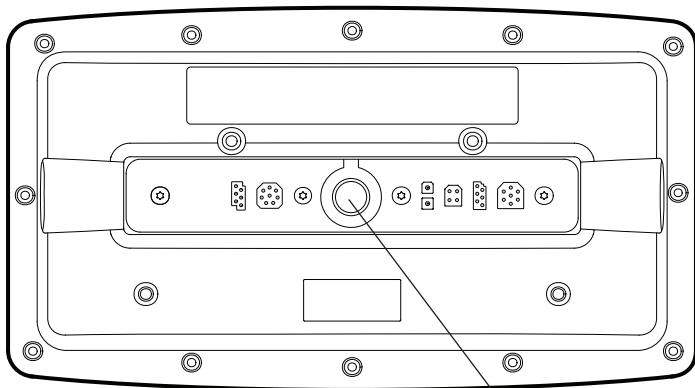
#### Hand-Tightening the Screw Nut



### C. Two 800, 900, or 1100 Series™ Units

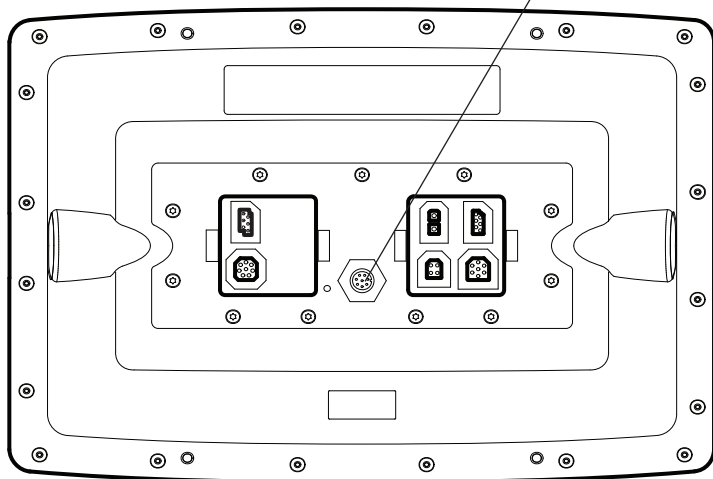
1. Insert one end of the AS EC 10E cable into the Ethernet port on the back of the first control head. The connectors are keyed to prevent incorrect installation, so be careful not to force the connectors into the port.
2. Insert the other end of the AS EC 10E cable into the Ethernet port on the second control head.
3. Hand-tighten the screw nut(s) on each cable to secure the connection.

800/900 Series™ (rear view)



*Ethernet Port*

1100 Series™ (rear view)



## 2. Powering On

---

When you have installed an Ethernet network, the power on process is the same as powering on a single control head, however, your transducer connections will determine how the control head starts normal operation. It is important to set up your network to use the correct sources.

If there is a transducer connected to only one of the control heads, and you intend to share the transducer on the network, power on the control head with the connected transducer first.

### Power On

1. Press the ① POWER/LIGHT key.

**Operation Mode:** If a transducer is attached to the control head, Normal mode (for on-the-water use) will start automatically. This is the default operation for powering on the control head, but the network setup will vary with how you've set up the connections as follows:

- If a transducer is not attached to the control head, but there is another transducer connected to the network, the control head will detect the other transducer and use it to start Normal mode automatically.
- If a transducer is not attached to the control head, but there is more than one transducer connected to the network, follow the on-screen instructions to choose a transducer source. See **Select a Sonar Source** for more information.

***NOTE:** Also, see your control head operations manual for more information about the Start-Up Options Menu.*

2. Repeat steps 1 until all of the control heads in the network are powered on. The Fishing System will detect the other control heads and sources in the network.

***NOTE:** If you have an InterLink™ connected to the network, the Ethernet will disable the InterLink™ because both network systems cannot be used at the same time.*

### 3. Configuring the Ethernet Network

---

Set up your Humminbird® Ethernet Network using the following instructions, including these topics:

1. Network Setup Overview
2. Customize the Unit Name
3. Select Data Sources (transducer, temperature, GPS receiver) for each control head
4. Understand the Shared and Local Menu Settings
5. Share Navigation Data

### Configuration Overview

---

Connected units can detect the other control heads and sources on the network. When the units are connected for the first time, the sources (transducer, temperature, and GPS) default to Local operation.

**Local (default):** The source reports data only to the connected control head.

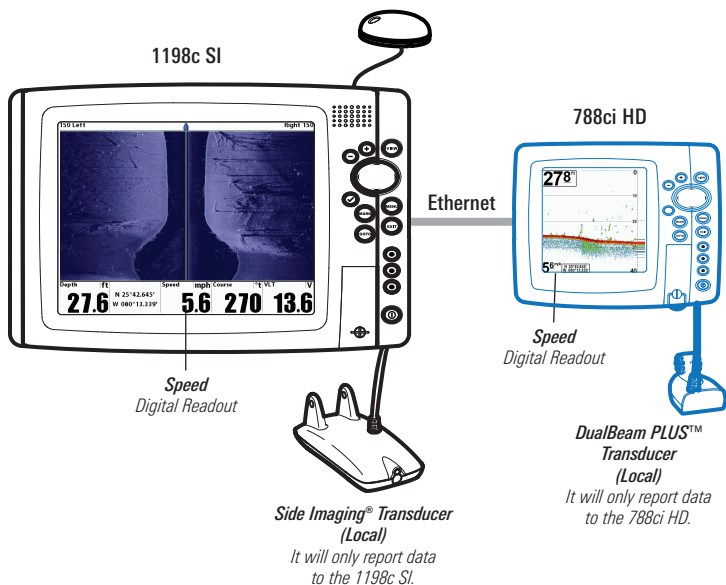
**Shared:** The source is set up to report data to both control heads in the network so that they share the same data.

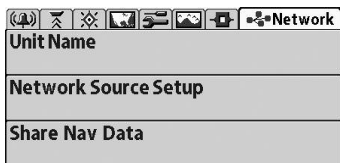
It is important to note that when a source is shared on the network, the source's data will be synchronized between units. The Menu System and View Rotation will change to match the shared source's capabilities. Alarms and Navigation also operate differently when they are shared. ***Review each source section*** to understand how a shared source will affect your Fishing System.

## Example of a Network Configuration

### GPS (Shared)

*Note that the Speed Digital Readout is the same on both control head views*





## Network Menu tab

When units are connected on the network, the Network menu tab is added to the Main Menu system.

The **Network** menu tab includes the following menu options:

**Unit Name:** Displays the name of the control head. The default Unit Name is based on its model number and serial number. To change the Unit Name, see *Customize the Unit Name*.

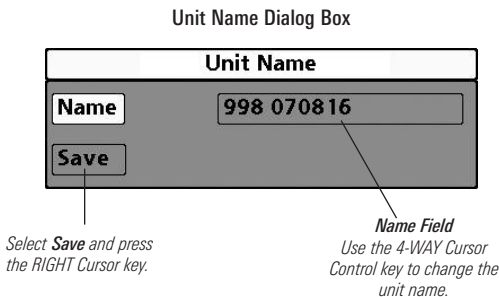
**Network Source Setup:** Opens the Network Source Setup dialog box. Use this dialog box to review all the sources connected to the network. You can also select sources for Local or Shared networking with this dialog box.

**Share Navigation Data:** Turn on this menu option to share navigation information (waypoints, routes, and tracks) on the network. When Share Navigation Data is turned on, the network chooses one GPS receiver to synchronize the position data and display navigation on both control heads (see *GPS and Navigation Data Overview* and *Share Navigation Data*).

## Customize the Unit Name

Each control head is assigned a Unit Name, which is based on its model number and serial number. The unit name is also displayed next to a source name in the Network Source Setup dialog box so you can see where the source is connected.

When you're first setting up your network, you may want to change how the unit name is displayed, so it is easier to identify each unit on the network.



### Customize the Unit Name

1. **Main Menu:** Press the MENU key twice. Select the Network Menu tab.
2. Select **Unit Name**. Press the RIGHT Cursor key. The unit name is displayed in the dialog box.
3. Use the 4-WAY Cursor Control key to select the Name field. You can change the control head display name as follows:

**Move within the Name Field:** Press the RIGHT or LEFT Cursor key.

**Change a Letter or Number:** Press the UP and DOWN Cursor keys. All upper and lower case letters are available (including digits 0-9 and some punctuation characters).

**Save:** Use the 4-WAY Cursor Control key to choose Save, and then press the RIGHT Cursor key.

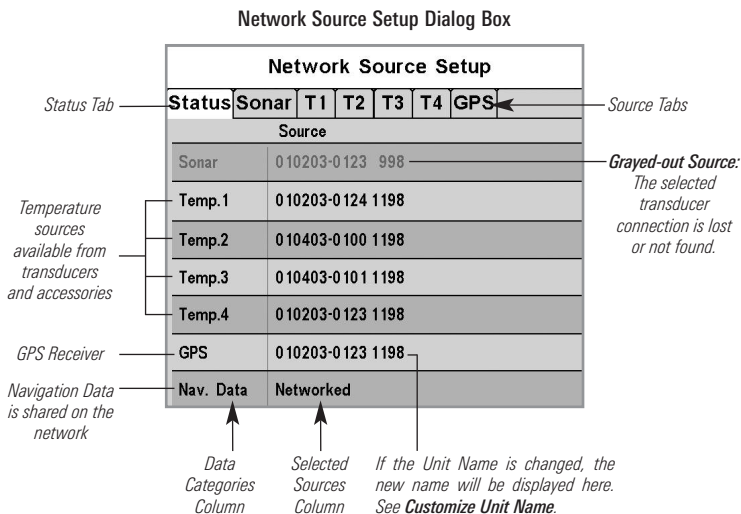


## Open the Network Source Setup Dialog Box

The Network Source Setup dialog box displays all of the sources connected to the network. The sources may be shared on the network or operating locally with their connected control head.

### Open the Network Source Setup Dialog Box

1. **Main Menu:** Press the MENU key twice. Select the Network tab.
2. Select **Network Source Setup**. Press the RIGHT Cursor key.
3. **Status Tab:** Allows you to review the selected data sources on the network. If a source is grayed out, the source is selected, but the network cannot detect the connection.
4. **Select a Source:** Review each source section in this manual to select a data source for each control head and understand how a shared source will affect your fishing system.



## Sonar Source Overview

When you select a new transducer source, the alarms, menu settings, view rotation, and digital readouts will automatically update on the control head.

- **Menu Settings:** If the sonar source is shared, the control heads will synchronize menu settings (Shared), while other menu settings will continue to operate individually (Local) on each control head. When you change a shared menu setting on one control head, it will be updated on the other control heads that are sharing the source.
- **Views:** The view rotation will update to display views that are compatible with the selected transducer.
- **Alarms:** When Sonar sources are shared on the network, the alarms are also shared. The shared alarm settings can be controlled from either control head, and the alarms will display or sound on both control heads. **To turn off a shared alarm**, press the EXIT key on any control head.

***NOTE:** If a selected transducer is not compatible with the control head, only limited menu options and views will be added to the menu system.*

### Shared Sonar Menu Settings

Beam Select	Lower Range	SI Range
Depth Alarm	Max Depth	SwitchFire™
Depth Offset	Noise Filter	Water Type
Fish ID+™	Ping Rate	Units- Depth
Fish ID Sensitivity		

## Local Sonar Menu Settings

83 kHz Sensitivity	Quad Layout	Sonar Colors
455 kHz Sensitivity	RTS Window™	Ping Rate
Bottom Lock	Sensitivity (Down)	SI Range
Bottom Range	SI Colors	SwitchFire™
Bottom View	SI Enhance	Transducer Select
Chart Speed	SI Sensitivity	Upper Range
Depth Lines	SI Side	Water Type

**NOTE:** The Shared and Local menu options may change to accommodate new product features.

## Select a Sonar Source

When you first set up the network, the control head will automatically start Normal operation with the transducer that is connected to it. Use the instructions below to choose a different local sonar source or shared source for your control head.

### Select a Sonar Source

1. Open the Network Source Setup dialog box.
2. Press the RIGHT Cursor key until the Sonar tab is selected.
3. **Scroll:** Press the DOWN or UP Cursor keys. The selected source is highlighted in white.

**NOTE:** If you do not see a connected transducer in the list, make sure that the control head Transducer Select menu option is set to the correct transducer. Go to the Main Menu > Navigation Menu Tab > Transducer Select.

4. **Select:** Press the ENTER/INFO key or the RIGHT Cursor key. The check mark indicates that the source is being used by the control head.
5. **Save:** Press the EXIT key to close the dialog box. Follow the on-screen instructions to save your changes. To select No, press the LEFT Cursor key. To select Yes, press the RIGHT Cursor key. Network settings are saved even after the unit is powered off.

**Local Setup (default):** To use separate transducers for each control head, repeat steps 1 - 5 on each control head until you've set a transducer for each unit.

**Shared Setup:** To use the same transducer with more than one control head, repeat steps 1 - 5 on each control head and select the same transducer for all units.

**Menu System and Views:** When you select a sonar source, the control head updates with the corresponding menu options and views. If the transducer is shared between control heads, it may take a moment for the data to synchronize. See **Sonar Source Overview** for more information.

### Selecting a Transducer

Press the *RIGHT* or *LEFT* Cursor key to select a tab.

Network Source Setup							
Status	Sonar	T1	T2	T3	T4	GPS	
Name	Model						
010203-0123	1198ci HD	Compact Sidescan	200/83	455			<input type="checkbox"/>
010203-0124	1198ci HD	Compact Sidescan	200/83	455			<input checked="" type="checkbox"/>
010403-0100	1198ci HD	Compact Sidescan	200/83	455			<input type="checkbox"/>
010403-0101	1198ci HD	Compact Sidescan	200/83	455			<input type="checkbox"/>

Available Sonar Sources

*Selected*  
The check mark indicates the transducer is used by the control head.

*Empty*  
The empty box indicates the transducer data is available but not selected. You must select a transducer to display its data on the control head.

Unit Name Column (see *Customize the Unit Name*)

Unit Model Number Column

Transducer Model Column

Beam Frequencies Column

## Change the Sonar Source

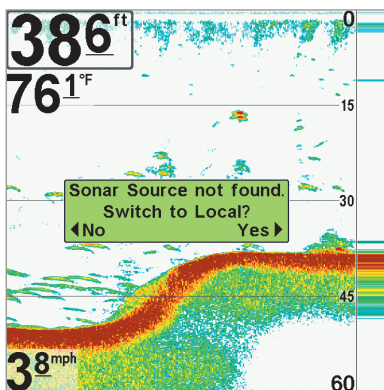
---

To change the sonar source, open the Network Source Setup dialog box and change the transducer source at any time (see ***Select a Sonar Source***). Network settings are saved even after the unit is powered off.

**If the control head cannot detect the set transducer**, an error message displays so that you can reset the transducer source as follows:

- **If the shared transducer is not detected on the network**, follow the on-screen instructions to switch to the transducer connected to the control head.
- **If the local transducer is not detected**, follow the on-screen instructions to switch to another transducer in the network. If there is more than one transducer in the network, you can select a different transducer from the Network Source Setup dialog box. See ***Select a Sonar Source*** for details.

## Finding the Sonar Source 700 Series™



*If the control head cannot detect the shared transducer, follow the on-screen instructions to change the sonar source. In the above illustration, the control head is switching to the locally-connected transducer. Press the LEFT Cursor key to select No, or press the RIGHT Cursor key to select Yes.*

## Temperature Source Overview

When you select a new temperature source, the alarms, menu settings, view rotation, and digital readouts will automatically update on the control head.

- **Menu Settings:** If the temperature source is shared, the control heads will synchronize menu settings (Shared), while other menu settings will continue to operate individually (Local) on each control head. When you change a shared menu setting on one control head, it will be updated on the other control heads that are sharing the source.
- **Views:** The view rotation will update to display views or digital readouts that are compatible with the selected temperature source.
- **Alarms:** When temperature sources are shared on the network, the alarms are also shared. The shared alarm settings can be controlled from either control head, and the alarms will display or sound on both control heads. **To turn off a shared alarm**, press the EXIT key on any control head.

### Shared Temperature Menu Settings

Temp. Alarm	Units - Temp	Aux. Temp. Offset
Aux. Temp Alarm	Temp. Offset	

**NOTE:** The remaining temperature menu options are controlled locally. The Shared and Local menu options may change to accommodate new product features.

## Select a Temperature Source

Temperature sources can be detected from a transducer's built-in temperature feature or from optional-purchase temperature/speed accessories connected to the network.

- **Default:** When you first set up the network, the control head will automatically choose the locally connected temperature source to display digital readouts on the screen.
- **Temperature Tabs:** The T1, T2, T3, and T4 tabs at the top of the Network Source Setup dialog box represent the digital readout positions on the screen. You can choose a different temperature source for each digital readout box, so each control head can display up to four temperature digital readouts on the display.

**NOTE:** There will be less than four temperature tabs displayed if there aren't four temperature sources connected to the network.

**Temperature Readout Sources**

Press the RIGHT or LEFT Cursor key to select a tab.

Available Temperature Sources

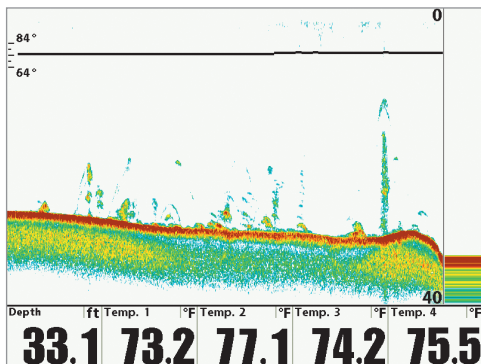
Temperature Tabs

Network Source Setup							
Status	Sonar	Temp. 1	T2	T3	T4	GPS	
Name		Model	Source				
010203-0123	1198ci HD	Auxiliary Temp.	<input checked="" type="checkbox"/>				
010203-0123	1198ci HD	Temp.	<input type="checkbox"/>				
010203-0124	1198ci HD	1198	<input type="checkbox"/>				
010203-0124	1198ci HD	Transducer	<input type="checkbox"/>				
010403-0100	1198ci HD	Auxiliary Temp.	<input type="checkbox"/>				
010403-0100	1198ci HD	Auxiliary Temp.	<input type="checkbox"/>				
010403-0101	1198ci HD	Auxiliary Temp.	<input type="checkbox"/>				
010403-0101	1198ci HD	Auxiliary Temp.	<input type="checkbox"/>				

The Temperature Source tabs correspond with the digital readout positions on the screen.



## Temperature Digital Readouts 1100 Series™



*The Temperature Digital Readout positions correspond with the T1, T2, T3, and T4 tabs in the Network Source Setup dialog box.*

### Select Temperature Sources for Digital Readout Boxes

1. Open the Network Source Setup dialog box.
2. **Select the tab for T1, T2, T3, or T4:** Press the RIGHT or LEFT Cursor keys. Each tab represents a digital readout position on the screen.

**NOTE:** The temperature readout positions may vary with the Humminbird® model. See the Views section and Select Readouts section of your Humminbird® Operations Manual for more information.

3. **Scroll:** Press the DOWN or UP Cursor keys. The selected source is highlighted in white.
4. **Select:** Press the ENTER/INFO key or the RIGHT Cursor key. The check mark indicates that the source is being used by the control head.
5. Repeat steps 2 - 4 to select a different temperature tab.

6. **Save:** Press the EXIT key to close the dialog box. Follow the on-screen instructions to save your changes. To select No, press the LEFT Cursor key. To select Yes, press the RIGHT Cursor key. Network settings are saved even after the unit is powered off.

**Local Setup:** To use separate temperature sources for each control head, repeat steps 1 - 6 on each control head until you've set a temperature source for each unit and each digital readout.

**Shared Setup:** To use the same temperature sources on more than one control head, repeat steps 1 - 6 on each control head and select the same temperature sources on all units.

**Menu System:** When you select a temperature source, the control head updates with the corresponding menu options and views. If the source is shared between control heads, it may take a moment for the data to synchronize. See *Temperature Source Overview* for more information.

### Selecting a Temperature Source for Digital Readout Position 1

Temp 1 tab sets the temperature source for digital readout 1 on the screen.

The control head detects all of the temperature sources in the network.

Network Source Setup						
Status	Sensor	Temp. 1	T2	T3	T4	GPS
Name	Model	Source				
010203-0123	1198ci HD	Auxiliary Temp.	<input checked="" type="checkbox"/>			
010203-0123	1198ci HD	Temp.	<input type="checkbox"/>			
010203-0124	1198ci HD	1198	<input type="checkbox"/>			
010203-0124	1198ci HD	Transducer	<input type="checkbox"/>			
010403-0100	1198ci HD	Auxiliary Temp.	<input type="checkbox"/>			
010403-0100	1198ci HD	Auxiliary Temp.	<input type="checkbox"/>			
010403-0101	1198ci HD	Auxiliary Temp.	<input type="checkbox"/>			
010403-0101	1198ci HD	Auxiliary Temp.	<input type="checkbox"/>			

The check mark indicates the source is used by the control head.

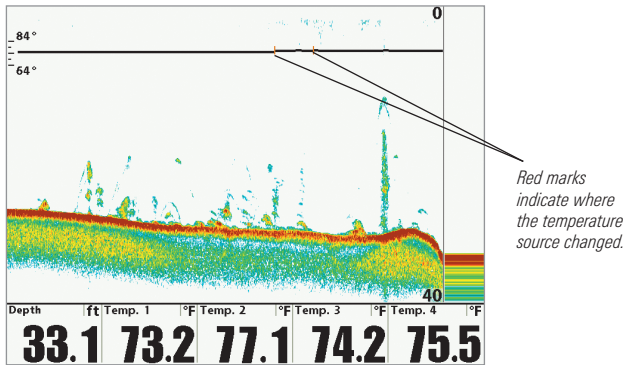
Empty  
The empty box indicates the temperature data is available but not selected. You must select a temperature source to display its data on the control head.

Unit Name Column  
(see *Customize the Unit Name*)

Unit Model Number Column

Temperature Source Type Column  
(from transducers or accessories)

## Temperature Graph 1100 Series™



### Change the Temperature Source

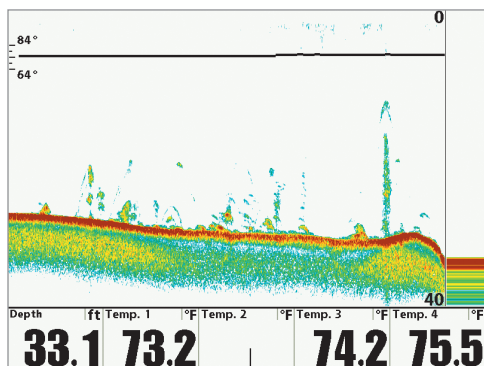
To change the temperature source after the network has been configured, open the Network Source Setup dialog box to change the temperature sources at any time (see **Select a Temperature Source**). Network settings are saved even after the unit is powered off.

- **Temperature Graph:** When the temperature source is changed, the temperature graph displays a red mark to show where the temperature source was changed.

**NOTE:** The Temperature Graph menu setting is not shared on the network. It is a local menu setting.

- **If the control head cannot detect the set temperature source,** the digital readout box will be empty. Open the Network Source Setup dialog box to assign a temperature source to the digital readout box. See **Select a Temperature Source** for details.

# Temperature Source Lost 1100 Series™



*The Temp 2 (T2) Source  
is not detected on the network.*

## GPS and Navigation Data Overview

---

When you select a new GPS source, the position, menu settings, view rotation, and digital readouts will automatically update on the control head. To view navigation and share navigation data on the network, it is important to understand the GPS source and how to share navigation data.

- **Menu Settings:** If the GPS source is shared, the control heads will synchronize menu settings (Shared), while other menu settings will continue to operate individually (Local) on each control head. When you change a shared menu setting on one control head, it will be updated on the other control heads that are sharing the GPS source.
- **Views:** The view rotation will update to correspond with the GPS receiver. If a networked control head is not a chartplotter, it will display chart information in trackplotter format (if it is trackplotter-capable).
- **Navigation:** To share navigation on both control heads and share navigation data (waypoints, routes, and tracks), Share Navigation Data must be turned on. See ***Share Navigation Data*** for more information.
- **MOB Navigation:** To view Man Overboard (MOB) navigation on both control heads, Share Navigation Data must be turned on. See ***Share Navigation Data*** and ***Share MOB Navigation*** for more information.
- **Alarms:** To share navigation alarms, each control head must turn on the Share Navigation Data menu. When navigation is shared, the shared alarm settings can be controlled on either control head, and the alarms will display or sound on both control heads.

**NOTE:** If a GPS source is shared, the alarms and navigation features are NOT shared. Turn on Share Navigation Data to share navigation data and alarms

## Select a GPS Source

---

When you power on the network for the first time, the control head will automatically choose the connected or internal GPS receiver to provide data to the control head. Use the instructions below to select a GPS source for your control head.

### Select a GPS Source

1. Open the Network Source Setup dialog box.
2. **Select the GPS Tab:** Press the RIGHT Cursor key until the tab is selected.
3. **Scroll:** Press the DOWN or UP Cursor keys. The selected source is highlighted in white.
4. **Select:** Press the ENTER/INFO key or the RIGHT Cursor key. The check mark indicates that the source is being used by the control head.
5. **Save:** Press the EXIT key to close the dialog box. Follow the on-screen instructions to save your changes. To select No, press the LEFT Cursor key. To select Yes, press the RIGHT Cursor key. Network settings are saved even after the unit is powered off.

**Local Setup:** To use separate GPS receivers for each control head, repeat steps 1 - 5 on each control head until you've set a GPS receiver for each unit.

**Shared Setup:** To use the same GPS receiver with more than one control head, repeat steps 1 - 5 on each control head and select the same GPS receiver on all units.

**Menu System:** When you select a GPS source, the control head updates with the corresponding menu options and views. If the GPS is shared between control heads, it may take a moment for the data to synchronize. See *GPS and Navigation Data Overview* for more information.

## Selecting a GPS Source

Network Source Setup						
Status	Sonar	T1	T2	T3	T4	GPS
Name	Model	Type	Fix			
010203-0123	1198ci HD	Ext.	Enhanced	<input type="checkbox"/>		
010203-0123	1198ci HD	Int.	Enhanced	<input type="checkbox"/>		
010203-0124	1198ci HD	External	None	<input type="checkbox"/>		
010203-0124	1198ci HD	Int.	None	<input checked="" type="checkbox"/>		
010403-0100	1198ci HD	Ext.	Enhanced	<input type="checkbox"/>		
010403-0100	1198ci HD	Int.	Enhanced	<input type="checkbox"/>		
010403-0101	1198ci HD	Ext.	None	<input type="checkbox"/>		
010403-0101	1198ci HD	Int.	Enhanced	<input type="checkbox"/>		

*The control head detects all of the GPS sources in the network.*

*Selected*  
The check mark indicates the source is used by the control head.

*Empty*  
The empty box indicates the GPS data is available but not selected.

Unit Name Column  
(see **Customize the Unit Name**)

Unit Model Number Column

GPS Type Column  
(Internal or External)

GPS Fix Column

**NOTE:** The current GPS Fix Type is reported as No Fix, 2D Fix, 3D Fix, or Enhanced. An Enhanced fix has been augmented using information from WAAS, EGNOS, or MSAS. A 3D or Enhanced Fix is required for navigation.

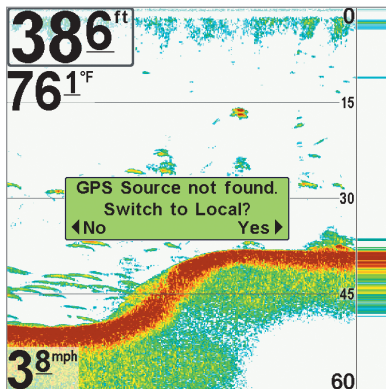
## Change the GPS Source

To change the GPS source after the network has been configured, open the Network Source Setup dialog box to change the GPS sources at any time. Network settings are saved even after the unit is powered off.

**If the control head cannot detect the set GPS receiver,** the control head will display an error message so that you can reset the GPS source as follows:

- **If the shared GPS receiver is not detected,** follow the on-screen instructions to switch to the GPS connected to the control head (Local).
- **If the local GPS receiver is not detected,** follow the on-screen instructions to switch to another GPS receiver in the network. If there is more than one GPS receiver in the network, the Network Source Setup dialog box will display, and you can select a different GPS source. See *Select a GPS Source* for details.

Finding the GPS Source  
700 Series™



*If the control head cannot detect the shared GPS Receiver set in the network, follow the on-screen instructions to change the GPS source. In the above illustration, the control head is switching to the locally-connected GPS receiver. Press the LEFT Cursor key to select No, or press the RIGHT Cursor key to select Yes.*



## Share Navigation Data

---

To synchronize navigation, navigation alarms, and review your saved waypoints, routes, and tracks on the network, **turn on Share Navigation Data on each control head**. You can then observe the following:

- When **navigation** is started on one control head, navigation will also start on the other control head.
- When a **waypoint** is marked on one control head, the waypoint will also be displayed on the other control head. If the waypoint is saved, it will be saved to the local control head where it was marked.
- **Navigation Alarms** will sound or display on the networked control heads. To turn off a shared alarm, press the EXIT key on either control head.
- When **Man Overboard (MOB) Navigation** is started on one control head, the MOB waypoint and navigation data will be displayed on both control heads. See *Share Man Overboard (MOB) Navigation*.

**NOTE:** Although the navigation data is viewable, it is not copied on every control head. In other words, a new route will be saved to the control head where the route was initiated. If you edit navigation data, the data will be saved back to its local control head.

**NOTE:** To manage your saved waypoints, routes, and tracks, see the Waypoint Management section of your Humminbird® operations manual or contact our Customer Resource Center for the Waypoint Management Guide at **1-800-633-1468** or visit our Web site at **humminbird.com**.

## Share Navigation Data

1. **Main Menu:** Press the MENU key twice. Select the Network tab.
2. Select **Share Navigation Data**. Press the RIGHT Cursor key to select On. (On, Off; Default = Off).
3. Repeat steps 1 - 2 on each control head so that each control head is sharing (or broadcasting) its navigation data on the network.

### Shared Navigation Menu Settings

Arrival Alarm	Go To	Off Course Alarm
Cancel Navigation	GPS Source	Set Map Offset
Continuous Navigation Mode	Local Time Zone	Skip Next Waypoint
Daylight Saving Time	Map Datum	Units- Distance
Drift Alarm	North Reference	Units- Speed

**NOTE:** The remaining navigation menu options are controlled locally. The Shared and Local menu options may change to accommodate new product features.

## Share Man Overboard (MOB) Navigation

---

As soon as you know that you have a man overboard (MOB), you should activate MOB navigation to maximize the chances for a successful rescue. MOB navigation allows you to create an MOB waypoint to locate the point at which your man went overboard and the relation of the boat to that point.

**When Share Navigation Data is turned on**, the Man Overboard (MOB) navigation will also be shared between control heads. If MOB navigation is started on one control head, the MOB navigation data will also be displayed on the other control head.

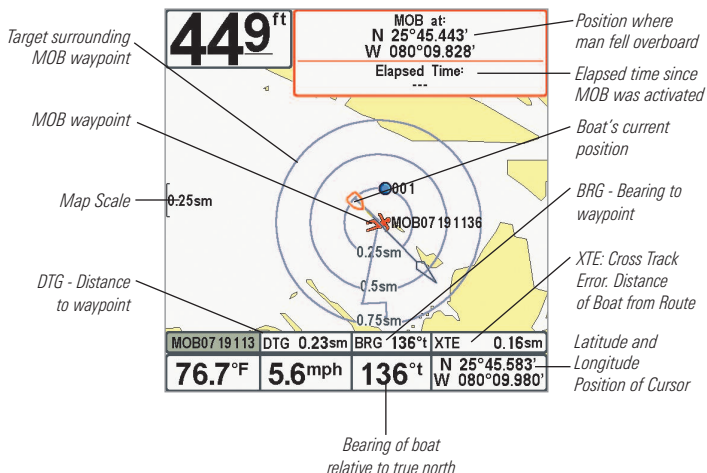
### Start Man Overboard (MOB) Shared Navigation

1. **Preparation:** Turn on the Share Navigation Data menu option on each control head. See *Share Navigation Data* for more information.
2. **Activate MOB Navigation:** Press and hold the GOTO key for more than 1.5 seconds to activate the Man Overboard (MOB) function.

When MOB is activated, a MOB waypoint is created at the boat's current position, regardless of whether the chart cursor is active or not. The MOB waypoint has a large, distinctive icon. Once MOB is activated, any current navigation will be cancelled and the current route will be discarded without notification. MOB navigation will begin immediately, and the MOB View will show the following:

- The view will switch to the Chart View, and the elapsed time since MOB was activated will be displayed.
- A line will be drawn from the boat's current position to the MOB waypoint, and the MOB waypoint will be targeted.
- The latitude/longitude position of the MOB waypoint will be displayed in an additional information box.

## MOB Navigation (700 Series™)



## Cancel MOB Navigation

Canceling MOB navigation removes the route and any waypoints created using the GOTO key. However, the cancellation does not remove any saved routes from memory.

1. Press the MENU key once.
2. Choose Cancel MOB from the X-Press™ Menu, and press the RIGHT Cursor key to select it.

## **Restore Defaults** *(Setup Menu Tab)*

---

If you choose to restore defaults on a Humminbird® control head, it is important to note that the menu settings, including your saved network settings, will be reset to their factory defaults. See your Humminbird® control head operations manual for more information.

**Use this menu choice with caution!**

## Troubleshooting

---

Before contacting the Humminbird® Customer Resource Center, please read the following section. Taking the time to review these troubleshooting guidelines may allow you to solve a performance problem yourself, and therefore avoid sending your unit back for repair.

### Fishing System Doesn't Power Up

---

If your Fishing System doesn't power up, use the installation guide that is included with your Fishing System to confirm specific details, making sure that:

- the power cable is properly connected to the Fishing System control head,
- the power cable is wired correctly, with red to positive battery terminal and black to negative terminal or ground,
- the fuse is operational, and
- the battery voltage of the power connector is at least 10 Volts.

Correct any known problems, including removing corrosion from the battery terminals or wiring, or actually replacing the battery if necessary.

## **Fishing System Defaults to Simulator with a Transducer Attached**

---

A connected and functioning transducer will cause the newly-started Fishing System to go into Normal operating mode automatically. If, when you power up the Fishing System, it goes into Simulator mode automatically, even though a transducer is already connected, this means that the control head is not detecting the transducer. Perform the following troubleshooting tasks:

- Using the Installation Guide that also comes with your Fishing System, check to make sure that the transducer cable is securely connected to the Fishing System. Reconnect if necessary, and power up the Fishing System again to see if this fixes the problem.
- Replace the non-functioning transducer with a known good transducer if available and power up the control head again.
- Check the transducer cable. Replace the transducer if the cable is damaged or corroded.

## Humminbird® Accessories

---

Accessories customize your Fishing System to your needs and enable you to stay on the edge of new technology. When an accessory is connected to the Fishing System, additional menus and readouts are added automatically to the Main Menu System. Accessories available today that are supported by your Fishing System include:

**GPS Connection Cable:** purchase the GPS Connection Cable in order to connect a handheld or other NMEA\* GPS-compatible device that you may already own to your Fishing System.

*\*NMEA 0183 is a National Marine Electronics Association standard for data communication.*

**PC Connect Cable:** Purchase the PC Connect Cable to connect the Fishing System to a PC in order to upload product software updates and new features obtained from **www.humminbird.com**. This accessory requires the MSWindows-compatible HumminbirdPC™ software downloaded from our web site to your PC in order to communicate with the Fishing System.

**WeatherSense® Fishing Condition Monitor:** purchase and plug in the WeatherSense® accessory to your Fishing System to obtain barometric pressure readouts and trend data in real time.

**Wireless Sonar Link (WSL):** purchase the Wireless Sonar Link (WSL) accessory to receive remote sonar signals from a SmartCast® Remote Sonar Source (RSS). Radio signals from the RSS are received by the WSL and are transmitted over the Accessory Bus to the Fishing System.

**Universal Sonar 2:** Your Fishing System supports Universal Sonar 2, a state-of-the-art, integrated and protected transducer that is built into the lower unit of Minnkota trolling motors. With Universal Sonar 2, all wiring is concealed inside the indestructible composite shaft—out of sight and out of harm's way, with no clamps, ties, or exposed wires. Universal Sonar 2 features new temperature sensing and the performance of DualBeam PLUS™ technology (available with all Humminbird® DualBeam PLUS™ models). An expanded view and greater bottom detail gives you a totally new perspective of the water below, along with optimal sonar performance to help you find fish.



Downriggers are the key to catching fish you otherwise couldn't even touch. And now Humminbird's **CannonLink™** Downrigger Controller makes operation of up to six Cannon® Mag 20 DT or Mag 20 DT/HS downriggers incredibly easy. Using the controls on your Fishing System, deploy or retrieve downriggers, hold a specific distance off the bottom, cycle downriggers between two depths, and adjust the Positive Ion Control. Even see temperature and water clarity at depth and speed at the ball right on-screen when using the Cannon® Speed-n-Temp. You'll never be shorthanded again, just make adjustments from the helm, while your mate rigs the lines and brings in the fish!

With the new **InterLink™** Network Connection, you can now share GPS position, waypoints, routes and your current track between two Humminbird® Fishing Systems in real time. Mark a waypoint at the console, and it's instantly available on the second unit. No matter where you're at on the boat, you'll have access to your critical fishing and navigation information. Plus, daisy chain **InterLink™** with other System Modules and you'll have a network that lets you share digital data around the boat. It's a simply, clearly, better networking solution!

Humminbird's **AS WX 1** weather accessory provides anglers with access to continuously-updating weather conditions. The AS WX 1 uses sophisticated technology to track nationwide weather information for more than 20 different weather conditions, including precipitation, wind, lightning, and full forecasts for more than 150 cities between the country, then scales and customizes this detail to the angler's specific location. See the AS WX 1 accessory guide for details.

Be sure to check out our Web site at **humminbird.com** for additional new and exciting accessories to grow your Fishing System!

***NOTE:** Each accessory requires a separate purchase. Visit our Web site at **humminbird.com** or contact our Customer Resource Center at **1-800-633-1468** for details.*

## Contact Humminbird®

Contact the Humminbird® Customer Resource Center  
in any of the following ways:

By Telephone:

(Monday - Friday 8:00 a.m. to 4:30 p.m. Central Standard Time):

**1-800-633-1468**

By e-mail:

(typically we respond to your e-mail within three business days):

**[service@humminbird.com](mailto:service@humminbird.com)**

For direct shipping, our address is:

**Humminbird**

Service Department

678 Humminbird Lane

Eufaula, AL 36027 USA



**HUMMINBIRD®**