

# EMI TEST REPORT

---



Report Number : KSQ-FCC020820

FCCID : O9ZMS3500

## **Appendix B User's Manual**

Please see attached document(s).



***Reliable, Secure, Convenient  
MagicSecure 3500***

**User's Manual**



**Hunno Technologies Inc.**

# Table of Contents

---

FCC Notices .....	3
Copyright Notices .....	3
Getting Started .....	4
Unpacking .....	4
Features .....	4
Specifications .....	4
System Requirements .....	4
MagicSecure3500 Parts Name .....	5
Hardware Installation .....	5
Software Installation .....	5
For Windows 98 .....	5
1. USB composite device .....	5
2. MagicSecure3500 .....	6
3. USB human interface device .....	8
For Windows ME .....	9
For Windows 2000 .....	10
For Windows XP .....	11

## FCC Notice

---

This device complies with Part 15 of the FCC Rules. Operation is subject to the following two conditions: (1) This device may not cause harmful interference, and (2) This device must accept any interference received, including interference that may cause undesired operation.

This equipment has been tested and found to comply with the limits for a Class B digital device, pursuant to part 15 of the FCC Rules. These limits are designed to provide reasonable protection against harmful interference in a residential installation. This equipment generates, uses and can radiate radio frequency energy and, if not installed and used in accordance with the instructions, may cause harmful interference to radio communication. However, there is no guarantee that interference will not occur in a particular installation. If this equipment does cause harmful interference to radio or television reception, which can be determined by turning the equipment off and on, the user is encouraged to try to correct the interference by one or more of the following measures:

- Reorient or relocate the receiving antenna.
- Increase the separation between the equipment and receiver.
- Connect the equipment into an outlet on a circuit different from that to which the receiver is connected.
- Consult the dealer of an experienced radio/TV technician for help.

NOTE : The manufacturer is not responsible for any radio or TV interference caused by unauthorized modifications to this equipment. Such modifications could void the user's authority to operate the equipment.

## Copyright Notice

---

Each involving company copyrights the software and the firmware in this manual. Every software and firmware is protected under the intellectual property right and treaty, computer program preservation and copyright law and international copyright convention.

No part of this manual may be reproduced, copied, translated or transmitted in any form or by any means without the prior written permission.

Copyright© 2001-2002 Hunno Technologies Inc. All right reserved. Made in Korea.

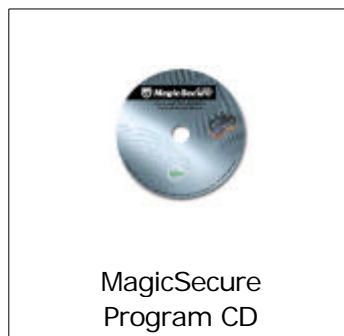
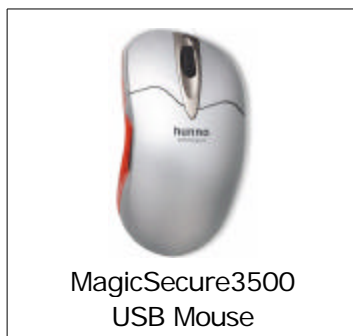
## Getting Started

---

MagicSecure3500 eliminates the need for user passwords with something can't be stolen or forgotten, tighten network security, simplifies the log-on process, and reduces the costs associated with managing corporate networks.

MagicSecure3500, which can be used on almost any surface without a mouse pad, guarantees fast recognition speed and accuracy. Strong durability of optical sensor shall be efficient for user's Cost Saving Policy.

## Unpacking



## Features

- Windows 98/ME/2000/XP/NT Logon
- USB Support
- Wheel & Optical Mouse Function, Scroll Function, Zoom Function
- Folder & File Encryption
- Screensaver
- 4 Type Security Code (Fingerprint, Password, Fingerprint and/or Password)
- Boot Protection
- Log Data Management
- Windows XP-Style Icon

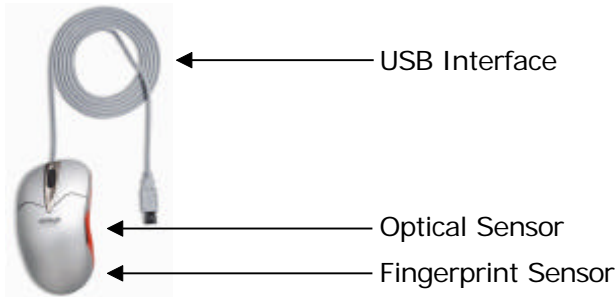
## Specifications

- Verification Time : 1.0 sec
- FRR : 0.01%
- FAR : 0.001%
- Size of Template : 256 byte
- Resolution : 500 dpi
- Communication : USB
- Power : DC 5V (Bus Power)

## System requirements

- Windows 98/ME, Windows 2000
- Pentium 133Mhz or above, 32MB RAM, 20MB HDD
- USB Port

## MagicSecure3500 Parts Name



## Hardware Installation

---

1. Powering up the System.
2. Connect the fingerprint identification optical mouse (MagicSecure3500) to the USB port of the system.



3. Installing Device Drivers.

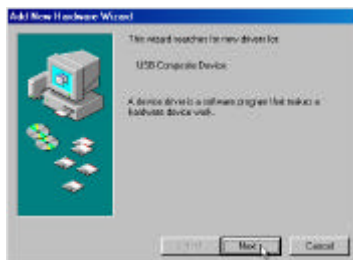
## Software Installation

---

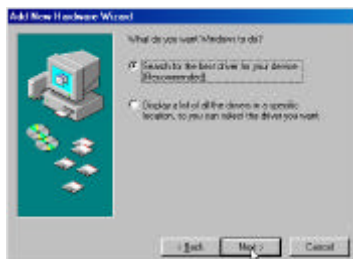
There are three device drivers that will be automatically installed; USB composite device, MagicSecure3500, and USB human interface device.

### For Windows 98

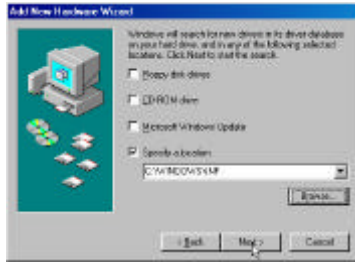
#### 1. USB composite device



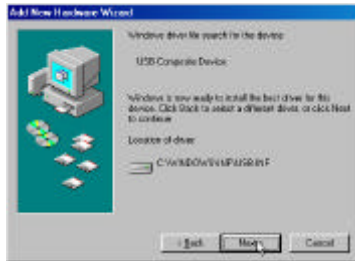
At the **Add New Hardware Wizard** screen shown above, click **Next**.



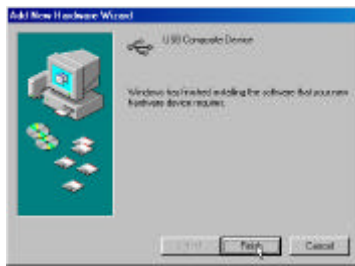
At the screen shown above, select **Search for the best driver for your device (Recommended)**, and then click **Next**.



At the screen shown above, select **Specify a location**, and then click **Next**.

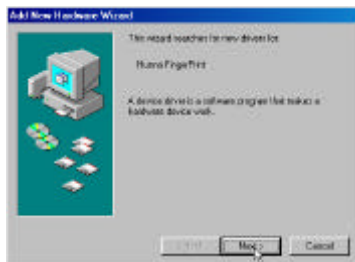


At the screen shown above, clicking **Next** will start the installation

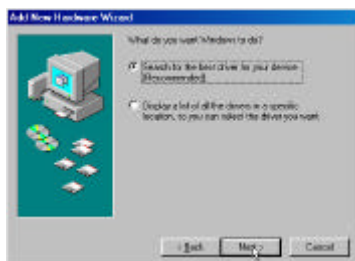


When the driver installation is complete and the screen indicating that Windows has finished installing USB composite device appears, click **Finish**.

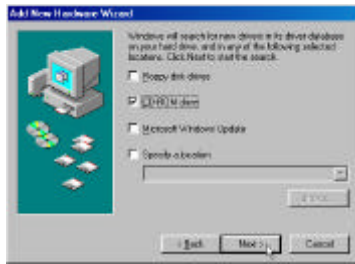
## 2. MagicSecure3500



At the **Add New Hardware Wizard** screen shown above, click **Next**.

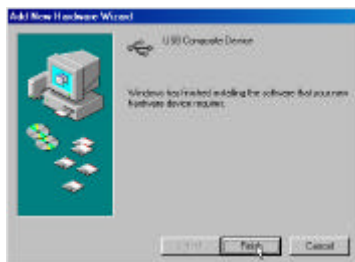


At the screen shown above, select **Search for the best driver for your device (Recommended)**, and then click **Next**.

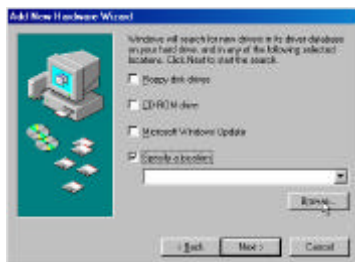


At the screen shown above, insert the MagicSecure CD and select CD ROM drive, and then click **Next**.

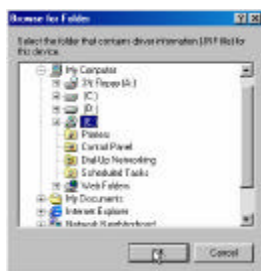
**Note:** If the path to the CD ROM drive is not found



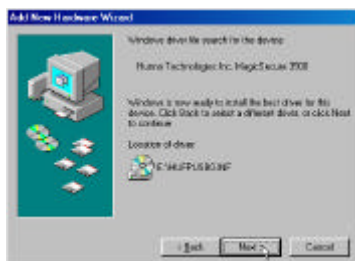
- 1) Ensure that the CD has been inserted.
- 2) After verifying the CD is inserted, click **Back** to return to the screen where the drive is specified.



- 3) Select **Specify a location**, and then click **Browse...**

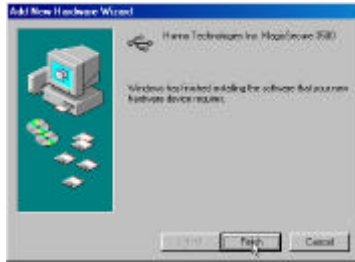


- 4) At **Folder Browse**, specify the CD-ROM drive and click **OK**.



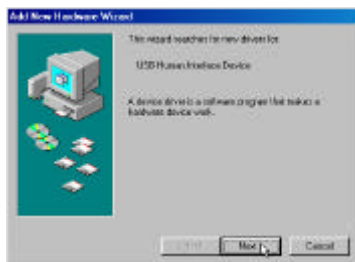
At the screen shown above, clicking **Next** will start the installation.



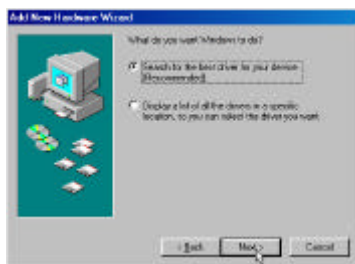


When the driver installation is complete and the screen indicating that Windows has finished installing MagicSecure3500 appears, click **Finish**.

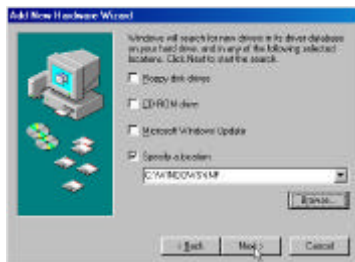
### 3. USB human interface device



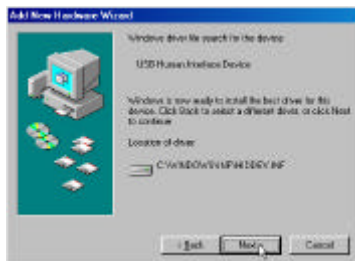
At the **Add New Hardware Wizard** screen shown above, click **Next**.



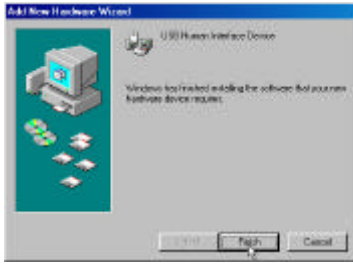
At the screen shown above, select **Search for the best driver for your device (Recommended)**, and then click **Next**.



At the screen shown above, select **Specify a location**, and then click **Next**.

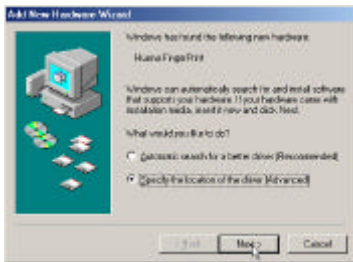


At the screen shown above, clicking **Next** will start the installation.

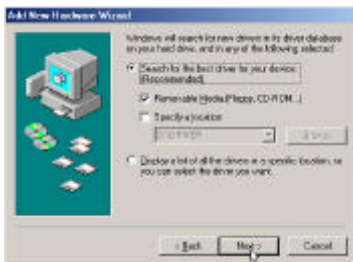


When the driver installation is complete and the screen indicating that Windows has finished installing USB human interface device appears, click **Finish**.

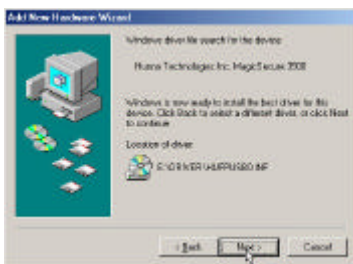
## For Windows ME



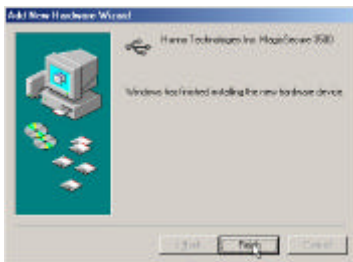
At the **Add New Hardware Wizard** screen shown above select **Specify the location of the driver (Advanced)**, and then click **Next**.



At the screen shown above, insert the MagicSecure CD and select **Removable media (Floppy, CD-ROM...)**, and then click **Next**.



At the screen shown above, clicking **Next** will start the installation.

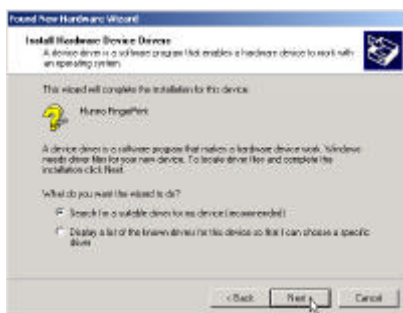


When the driver installation is complete and the screen indicating that Windows has finished installing MagicSecure3500 appears, click **Finish**.

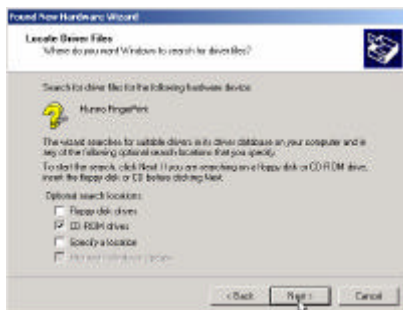
## For Windows 2000



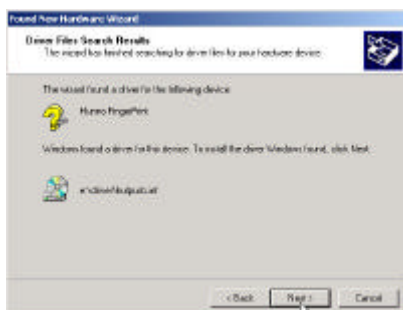
At the **Found New Hardware Wizard** screen shown above, click **Next**.



At the screen shown above, select **Search for a suitable driver for my device (Recommended)**, and then click **Next**.



At the screen shown above, insert the MagicSecure CD and select **CD-ROM drive** from **Optional search locations**, and then click **Next**.



At the screen shown above, clicking **Next** will start the installation.

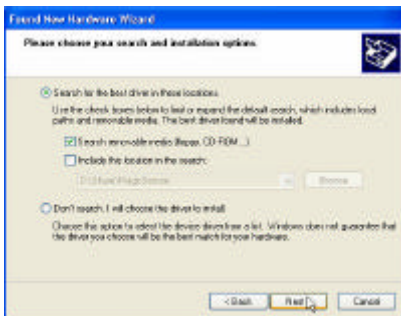


When the driver installation is complete, and the Completing the Found New Hardware Wizard screen for MagicSecure3500 appears, click **Finish**.

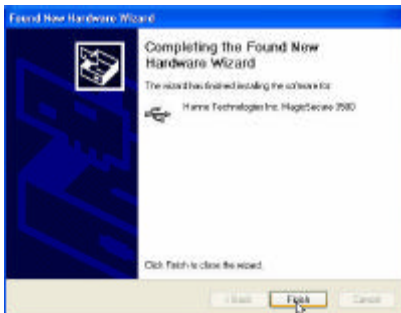
## For Windows XP



At the **Welcome to the Found New Hardware Wizard** screen, select **Install from a list or specific location (Advanced)**, and then click **Next**.



Insert the MagicSecure CD and select **Search removable media (Floppy, CD-ROM...)**, and then click **Next**.



When the driver installation is complete and the **Completing the Found New Hardware Wizard** screen for MagicSecure3500 appears, click **Finish**.