

NITETIME PRO

Wireless Timer

English

Owner's Guide and
Installation Manual

Model
45043



Form# 43073-01
20080905
©2008 Hunter Fan Co.

Hunter[®]
SINCE 1886



TABLE OF CONTENTS

Description.....	4
Features	6
Features	6
Limitations / Warnings	7
Program the NITETIME Pro™	9
Setup the NITETIME Pro™	12
KeyChain Operation	18
Battery Replacement.....	20
Troubleshooting.....	22
Technical Support.....	24
The Hunter Product Family.....	25





DESCRIPTION

The NiteTime Pro™ combines the convenience of photocell controlled time operation and remote control on/off functions. The NiteTime Pro™ plugs into a wall outlet and connects to a standard household lamp or small appliance.

Eight pre-programmed settings allow for instant, one-time setup. Programs include basic On and Off timed settings triggered by lighting conditions, as well as randomly-timed modes for creating a lived-in appearance while you are away from home.

A built-in photocell automatically adjusts the timer to Daylight Savings Time changes so no resetting is required – even after power outages. The convenient Keychain Remote allows temporary override of programming for use of a lamp or small appliance.



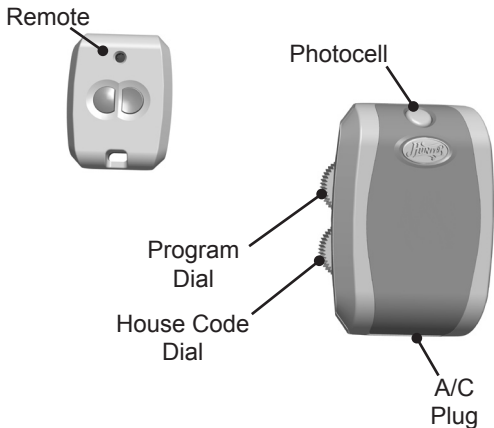


Figure 1: NiteTime Pro™ Components



FEATURES

- Eight pre-programmed On-Off time segments allow for instant, one-time setup.
- Built-in photocell senses ambient room light and automatically triggers On-Off time segments.
- Built-in photocell automatically adjusts timer for Daylight Savings Time changes.
- Timer requires no resetting – even after power outages.
- Timer can be used with incandescent (standard bulb), compact fluorescent (CFL), or halogen-based bulb lamps.
- Timer can be used with small appliances under 500 watts or four Amps such as a radio or television.
- RF signal with up to 60 FT. open air range (*Range may vary between installations. Refer to Limitations/Warnings for more information.*)
- 3 Year Warranty





LIMITATIONS / WARNINGS

- For indoor use only
- Not recommended for devices over 500 watts or four Amps
- When used on a device controlled by a wall switch, the wall switch must remain on at all times for the NiteTime Pro™ to function properly.
- Power must remain on to the device using the NiteTime Pro.
- Obstructions between Remote and Receiver module including walls and doors will reduce signal range.
- To reduce the risk of electrical shock, this equipment has a polarized plug (one blade is wider than the other). This plug will fit in a polarized outlet only one way. If the plug does not fit fully in the outlet, reverse the plug. If it still does not fit, contact qualified personnel to install the proper outlet. Do not alter the plug in anyway.
- Not for use with grounded 3 pronged devices.





LIMITATIONS / WARNINGS

- This device complies with Part 15 of the FCC Rules. Operation is subject to the following two conditions: (1) this device may not cause harmful interference, and (2) this device must accept any interference received, including interference that may cause undesired operation.





PROGRAM THE NITETIME PRO™

Choose the Timer Setting

Before plugging the timer into a wall outlet, choose the desired time program using the Program dial. These instructions apply to both lamps and small electronics. Once set, the program never needs resetting for Daylight Savings Time or power outages.

If a timed program is not needed, set the Program dial to 1, Power On. To revert back to a timed program, change the Program dial to one of the settings on page 10.





PROGRAM THE NITETIME PRO™

- 1 - Power On.
- 2 – Dusk +2hr turns power On at dusk, turns power off 2 hours later.
- 3 – Dusk +4hr turns power On at dusk, turns power off 4 hours later.
- 4 – Dusk +6hr turns power On at dusk, turns power off 6 hours later.
- 5 – Dusk +8hr turns power On at dusk, turns power off 8 hours later.
- 6 – Dusk +2hr Randomly powers On / off for 30 minutes within each hour after dusk for 2 hours.
- 7 – Dusk +4hr Randomly powers On / off for 30 minutes within each hour after dusk for 4 hours.
- 8 – Dusk +6hr Randomly powers On / off for 30 minutes within each hour after dusk for 6 hours.



Menu of Timer
Settings



Figure 2: NiteTime Pro™ Programs



SETUP THE NITETIME PRO™

1. Slide the battery cover off the back of the remote.
2. Pull out the battery from the battery compartment.
3. Remove the protective film from between the battery and battery compartment. (*Refer to Figure 3*)



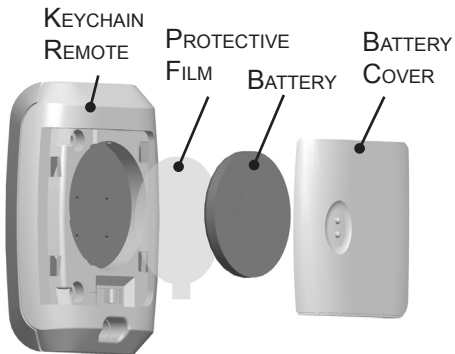


Figure 3 - Keychain Components



SETUP THE NITETIME PRO™

4. *Check the house code on the remote, reinstall the battery, and slide the battery cover back on.*
5. Ensure that the house code switches on both the Remote and Receiver match. (refer to Figure 4)
6. Turn power off to your lamp or appliance and unplug it from your wall outlet.



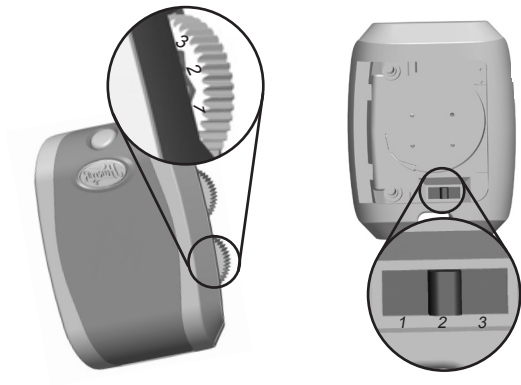


Figure 4 - House Code



SETUP THE NITETIME PRO™

7. Plug your lamp or applance into the NiteTime Pro™ Receiver. (refer to Figure 5)
8. Plug your NiteTime Pro™ Receiver into the wall outlet.
9. Turn power back on to your lamp.



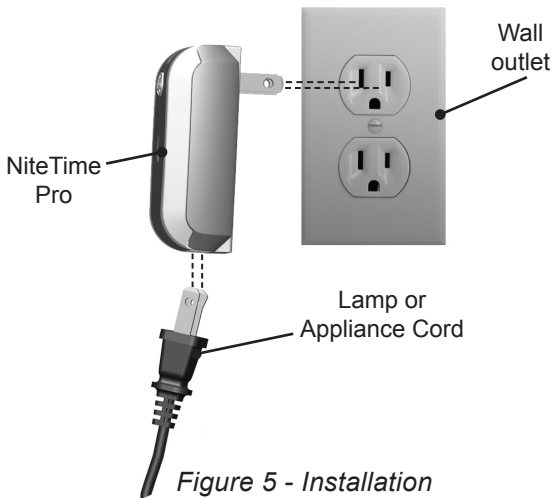


Figure 5 - Installation



KEYCHAIN OPERATION

The Keychain Remote included with the NiteTime Pro™ lets you control the attached lamp or appliance with the remote.

Press the recessed button once to power the lamp or appliance on and the raised button once to power the lamp or appliance off. (refer to Figure 6)

The NiteTime Pro™ will automatically revert to it's programming during the next time program sequence.



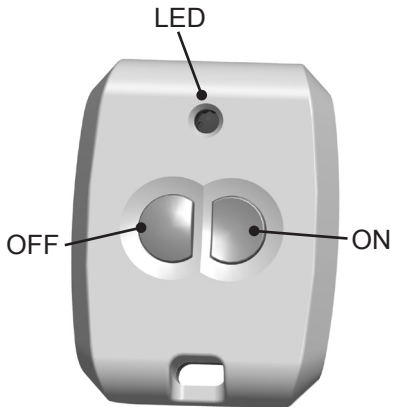




Figure 6 - Remote Operation



Battery Replacement

1. To replace the battery in the NiteTime Pro™ Remote, remove the battery cover and take out the battery. (refer to Figure 7)
2. Place the new battery, positive side up, inside the Remote and slide the battery cover back on.

NOTE: Only replace with MAXELL CR2032, 3V battery or equivalent.



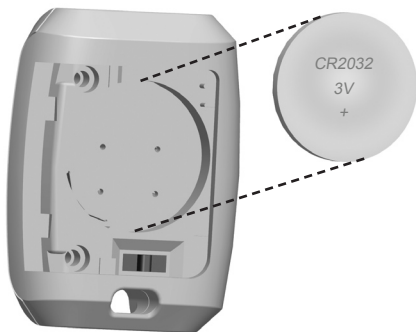


Figure 7 - Battery Replacement



TROUBLESHOOTING

1. My NiteTimer Pro™ turns itself on / off.

Your product may be experiencing RF interference. Refer to "Operation" to learn how to change the house code settings.

2. I can't operate the NiteTimer Pro™ Remote.

Try changing the battery in the remote control. See "Battery Replacement"

3. One of my lamps does not activate with the NiteTimer Pro™ product.


Ensure the lamp you are trying to activate with the NiteTimer™ is turned on. Check your house code setting to ensure they are set the same.

4. I receive erratic behavior from the NiteTimer Pro™ product.

It may be necessary to change the house code your product is set to.





- 
1. Slide the battery cover from your Remote Control and remove the battery.
 2. Change the House code Switch to another house code number. (Figure 4)
 3. Replace the battery and slide the Battery Cover back on the Remote.
 4. Turn off your lamp and unplug from the NiteTimer Pro™ Receiver.
 5. Unplug the Receiver and change the dial to the same number you set your Remote Control too. (Figure 3)
 6. Plug your lamp into the NiteTimer Pro receiver and the NiteTimer Pro receiver into the wall outlet.





TECHNICAL SUPPORT

If you have any additional questions or problems with your Hunter Air Purifier, please call:

USA: 1-888-830-1326

Canada: 1-866-268-1936

Hours of operation are from 7:00 am to 7:00 pm Monday - Friday and 8:00 am to 5:00 pm on Saturday, Central Time. You may also contact us over the Internet at:

WWW.HUNTERFAN.COM





THE HUNTER PRODUCT FAMILY

Humidifiers



Bath Fans



Air Purifiers



Thermostats



Ceiling Fans

