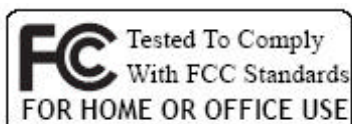


IEEE 802.11b/g

Wireless LAN USB Adapter

USER'S MANUAL

**VERSION 2.0
2007/04/24**





The installation & driver CD will automattallation program after you insert the disk into your CD drive.

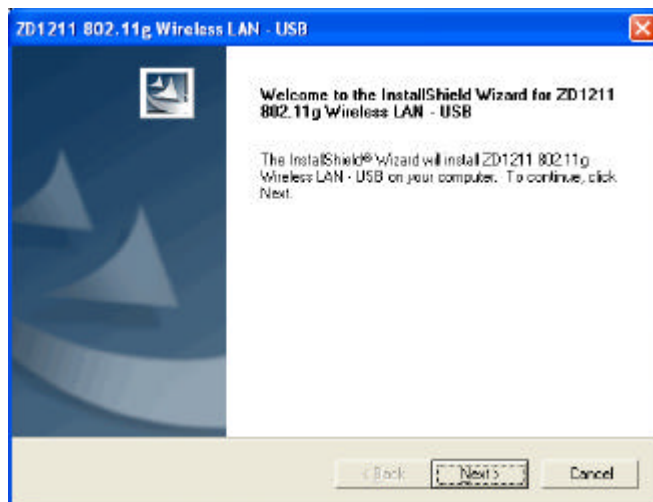
Step 1 :

Insert the installation & driver CD into your CD-ROM.



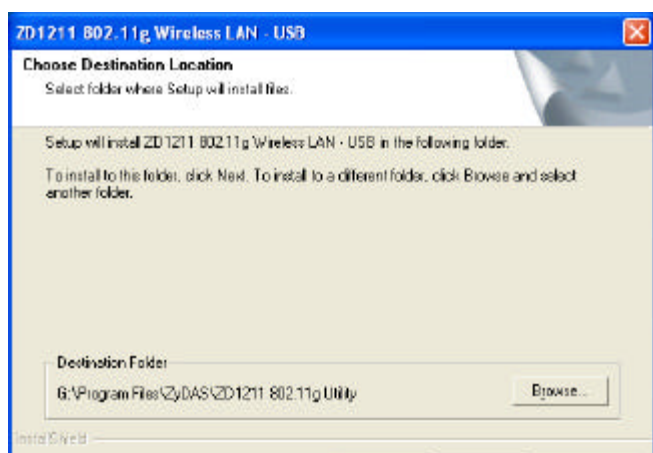
Step 2 :

Click **Next** to continue.



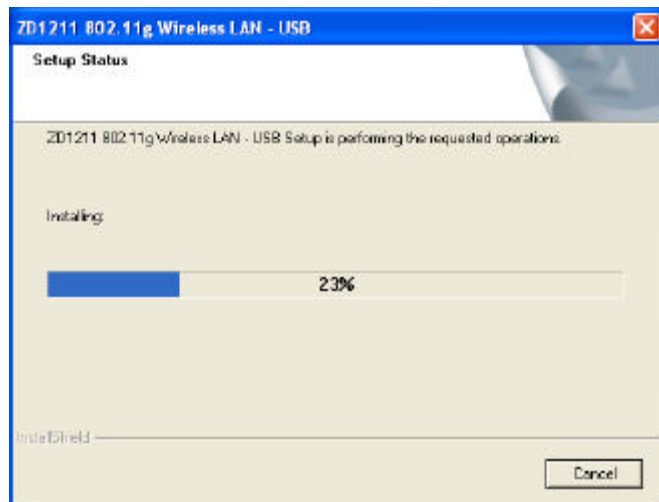
Step 3 :

Click **Next** to install at the designated folder. Or, click "Browse" to select different folder.



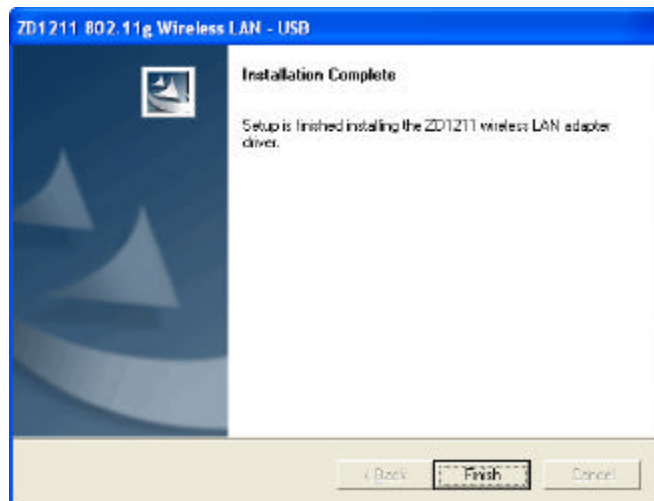
Step 4 :

Start copying files until it finishes the installation.



Step 5 :

Click **Finish** to complete installation.



Step 6 :

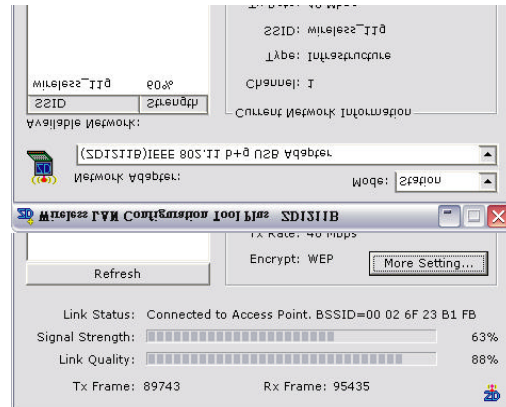
After finished install driver and utility on your system, plug the USB adapter into the USB port of your PC. Windows XP/2000 will automatically detect the USB Adapter.

WLAN USB Adapter uses its own management software. All functions controlled by users are provided by this application. When you insert the WLAN USB Adapter into the USB port of your PC, a new icon should appear in the Windows System Tray automatically.



If the icon is in red, it means that WLAN USB Adapter configuration is invalid or incomplete. Double click on that icon and the configuration window will pop up as shown below. It shows the SSID of available network. Once a network is chosen, the signal strength and link quality are displayed.

The Link Quality and Signal Strength bar chart is only active when the node is in Infrastructure Mode. The bar graph displays the quality and strength of the link between the node and its Access Point. Link Quality is a measurement of receiving and transmitting performances over the radio.

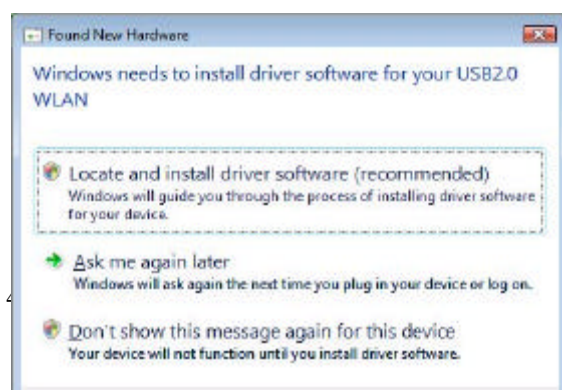


Tx/Rx Frame displays the instantaneous wireless Transmit and Receive Throughput in bytes per second, these values are updated every two seconds

The Configuration Tool contains several fields where operating parameters of the driver can be viewed or changed. Changes to any of the parameters in this panel can be applied to the driver without a need to restart the computer.

1. The installation & driver CD will automatically activate the autorun installation program after you insert the disk into your CD drive. Please refer to page 2 "INSTALL DRIVER / UTILITY"
2. To install manually:

Plug your USB dongle into USB interface, windows Vista will search for compatible driver to install.

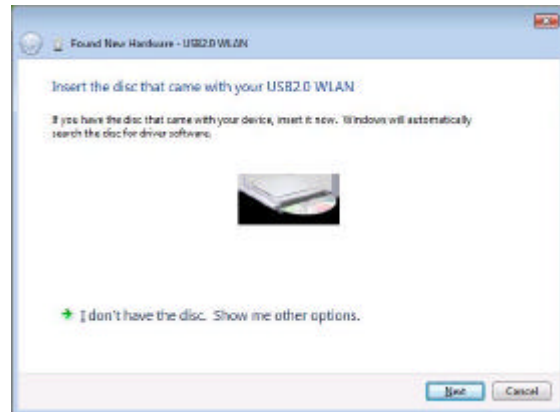


Step 1 :

Select “Locate and install the driver software”, Windows will guide you through the process of installing driver software for your device.

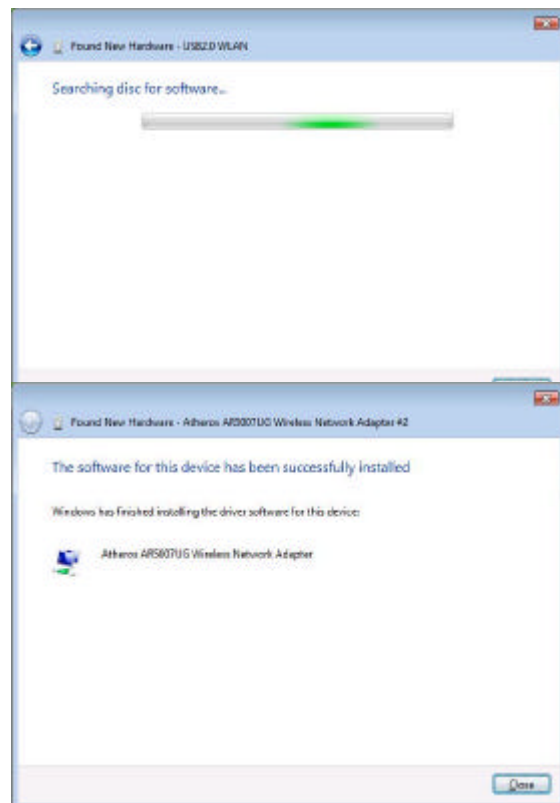
Step 2 :

Insert the installation disc into the CD-ROM and click “next” to continue installation.



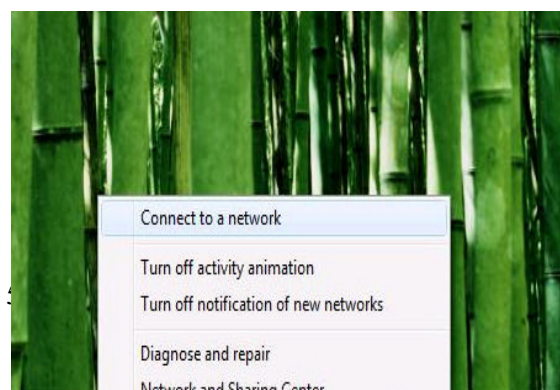
Step 3 :

Windows Vista search for the software and it will be installed successfully.



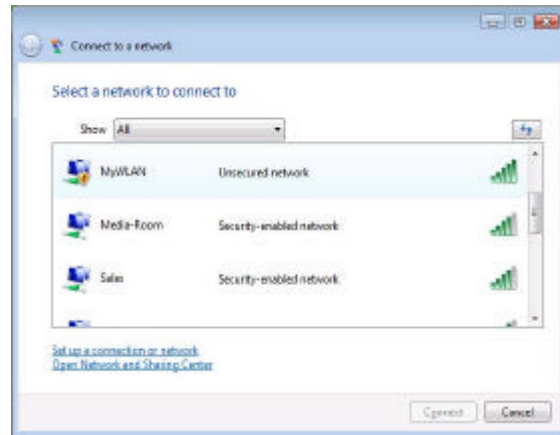
Step 4 :

After installation, right click the network icon on the Windows Vista System Tray, and click “Connect to a network”.



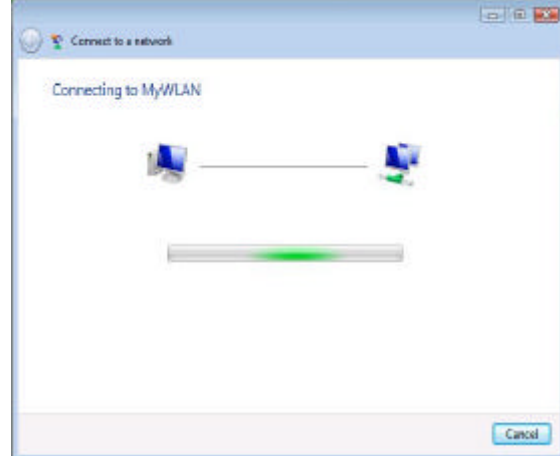
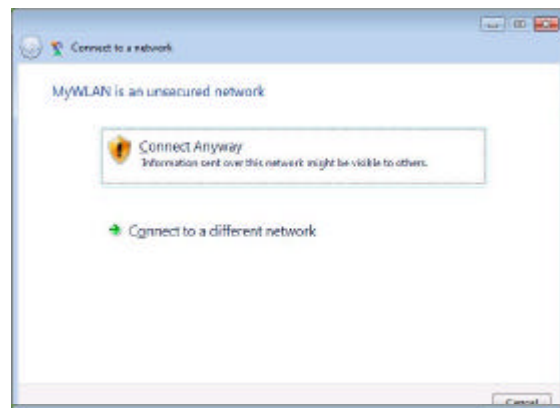
Step 5 :

Select a network to connect to and click “Connect”.



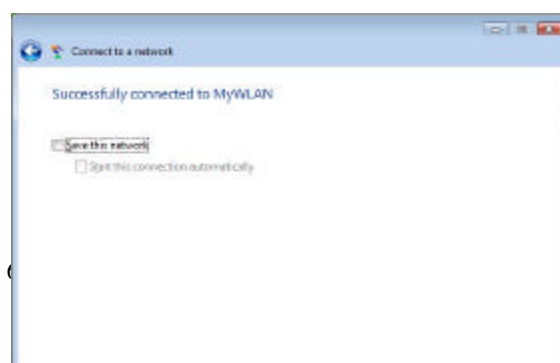
Step 6 :

Click “Connect Anyway” if the network is an unsecured network.



Step 7:

USB Dongle successfully connected to network, Click “Close”



This USB dongle can only be used on desktop PCs . This equipment should be installed and operated with minimum distance 20cm between the radiator & your body.

This equipment has been tested and found to comply with the limits for a Class B digital device, pursuant to Part 15 of the FCC Rules. These limits are designed to provide reasonable protection against harmful interference in a residential installation. This equipment generates, uses and can radiate radio frequency energy and, if not installed and used in accordance with the instructions, may cause harmful interference to radio communications. However, there is no guarantee that interference will not occur in a particular installation. If this equipment does cause harmful interference to radio or television

reception, which can be determined by turning the equipment off and on, the user is encouraged to try to correct the interference by one of the following measures:

- Reorient or relocate the receiving antenna.
- Increase the separation between the equipment and receiver.
- Connect the equipment into an outlet on a circuit different from that to which the receiver is connected.
- Consult the dealer or an experienced radio/TV technician for help.

This device complies with Part 15 of the FCC Rules. Operation is subject to the following two conditions: (1) This device may not cause harmful interference, and (2) this device must accept any interference received, including interference that may cause undesired operation.

FCC Caution: Any changes or modifications not expressly approved by the party responsible for compliance could void the user's authority to operate this equipment.

IMPORTANT NOTE:

FCC Radiation Exposure Statement:

This equipment complies with FCC radiation exposure limits set forth for an uncontrolled environment.

This transmitter must not be co-located or operating in conjunction with any other antenna or transmitter.

The best performance is getting from the USB adapter with Antenna on vertical polarization.