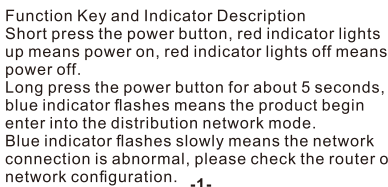


# WiFi Smart Converter User Manual

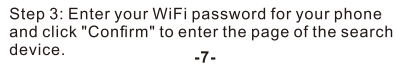
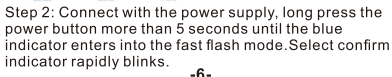
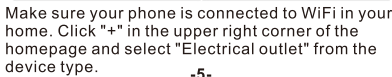
### Product Schematic



Wireless Type: Wi-Fi2.4GHz
Operating temperature: 0℃ - 40℃
Support system: Alexa/Home/IFTTT
Support mobile: Android/IOS
Turn On Intelligence



1. Tap "Register" in the upper right (pic 1)
2. The system automatically determines your country / area. You can also select your country code by yourself. Enter the cellphone number/E-mail and tap "Next" (pic 2)
3. If you enter the mobile cellphone number, enter the verification code in the message (pic 3) , and enter the password, tap "Confirm" to finish your registration.
4. If you enter the E-mail, enter the password (pic 4) , tap "Confirm" to finish your registration.



The screenshot shows the Smart Life app interface on an Android phone. The top navigation bar includes a 'Smart Life' tab and a 'Your Data' tab. Below the navigation bar, there is a 'Smart Life' section with a 'Smart Life' button and a 'Smart Life' button. The main content area displays a 'Smart Life' button and a 'Smart Life' button. At the bottom, there is a keyboard and a 'Smart Life' button.



## FCC STATEMENT:

This device complies with part 15 of the FCC Rules. Operation is subject to the following two conditions:

- (1) This device may not cause harmful interference, and
- (2) this device must accept any interference received, including interference that may cause undesired operation.

**Warning:** Changes or modifications not expressly approved by the party responsible for compliance could void the user's authority to operate the equipment.

**NOTE:** This equipment has been tested and found to comply with the limits for a Class B digital device, pursuant to part 15 of the FCC Rules. These limits are designed to provide reasonable protection against harmful interference in a residential installation. This equipment generates uses and can radiate radio frequency energy, and if not installed and used in accordance with the instructions, may cause harmful interference to radio communications. However, there is no guarantee that interference will not occur in a particular installation. If this equipment does cause harmful interference to radio or television reception, which can be determined by turning the equipment off and on, the user is encouraged to try to correct the interference by one or more of the following measures:

- Reorient or relocate the receiving antenna.
- Increase the separation between the equipment and receiver.
- Connect the equipment into an outlet on a circuit different from that to which the receiver is connected.
- Consult the dealer or an experienced radio/TV technician for help.

This equipment complies with FCC radiation exposure limits set forth for an uncontrolled environment. This equipment should be installed and operated with minimum distance 20cm Between the radiator& your body. This transmitter must not be co-located or operating in conjunction with any other antenna or transmitter.