

# Smart bulb User Manual

## Product Schematic



## Features of smart bulb light:

1. Controlled by mobile phones from anywhere at anytime
2. Free app smart life supports Android and iOS systems, simple to use
3. Timer for schedules setting
4. Energy monitoring for energy saving plan
5. Voice control: works with Amazon Alexa and Google home
6. Wide voltage suitable for AC100~250V 50Hz/60Hz
7. Connection: Wi-Fi

## Specifications:

Rated power: 10W

Input voltage: AC100~250V 50Hz/60Hz

Lumen: 850lm

Light source: LED

CRI:  $\geq 80$ Ra

Switch life: 15000 times

Lamp luminous efficiency: 80lm/W

Power factor: 0.6

Color temperature: 6000K~6500K + RGB

Working temperature: -20 to 40°C

Base: E14/E27/E40

Connection: Wi-Fi

Easy installation - There are 3 steps to start your smart life. Scan the QR code to download the APP, install the lamp and use the APP to control the Wi-Fi bulb. If you do not link it, it is just a normal bulb, but once you link it to your Amazon Echo/Google home, you can control it with voice, turn on and off the light, and the changing of the color which is very interesting

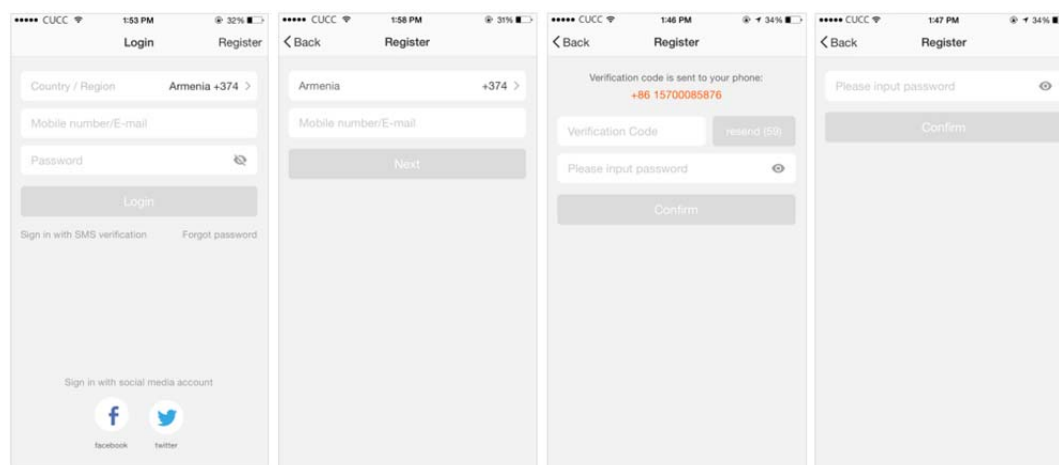
**Use your phone to scan the QR code below or search "smart life" in application market to download and install the App**



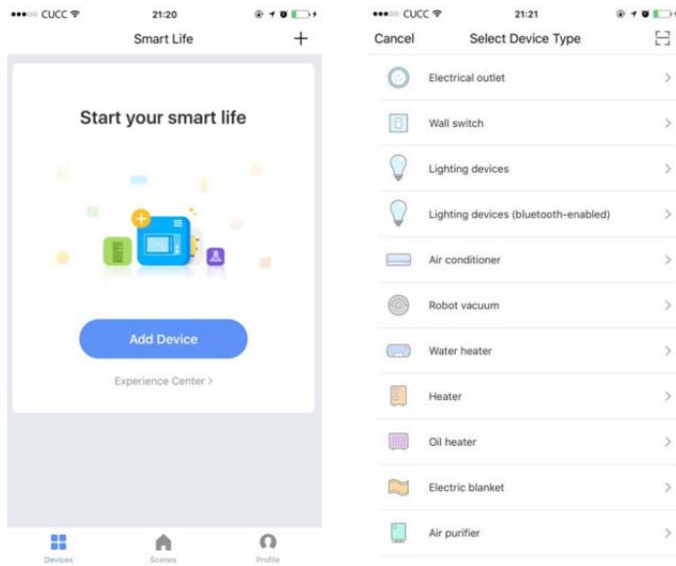
**Step 1:** Registration and login "smart life" APP.

If you don't have the account of "Smart life" APP, register an account or sign in with cellphone number + verification code. This page describes the Registration process.

1. Tap "Register" in the upper right (pic 1)
2. The system automatically determines your country / area. You can also select your country code by yourself. Enter the cellphone number/E-mail and tap "Next" (pic 2)
3. If you enter the mobile cellphone number, enter the verification code in the message (pic 3), and enter the password, tap "Confirm" to finish your registration.
4. If you enter the E-mail, enter the password (pic 4), tap "Confirm" to finish your registration.

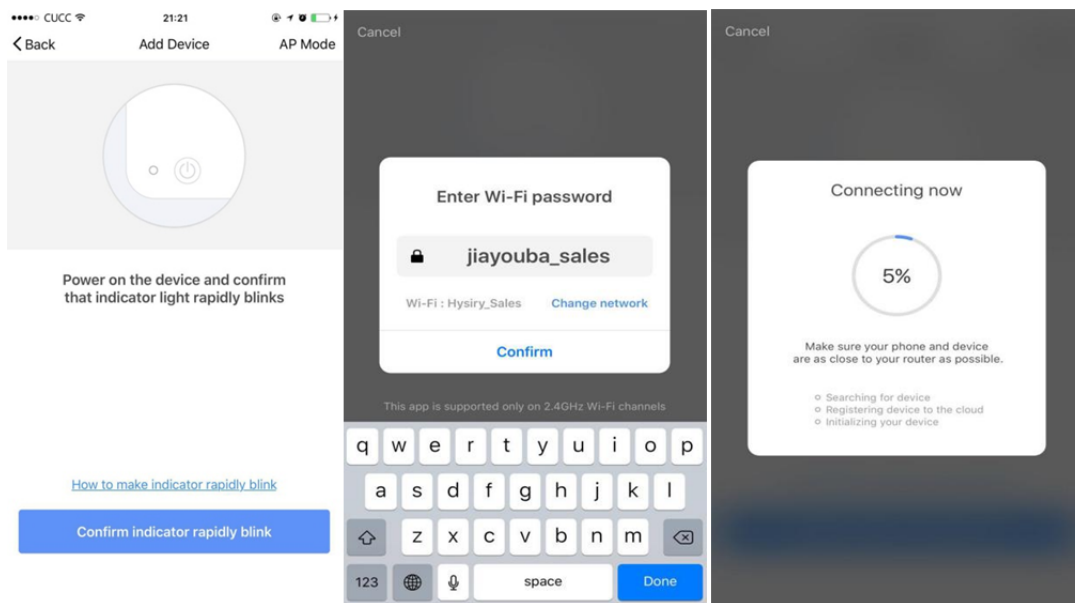


Make sure your phone is connected to WiFi in your home. Click "+" in the upper right corner of the homepage and select "Lighting devices" from the device type.

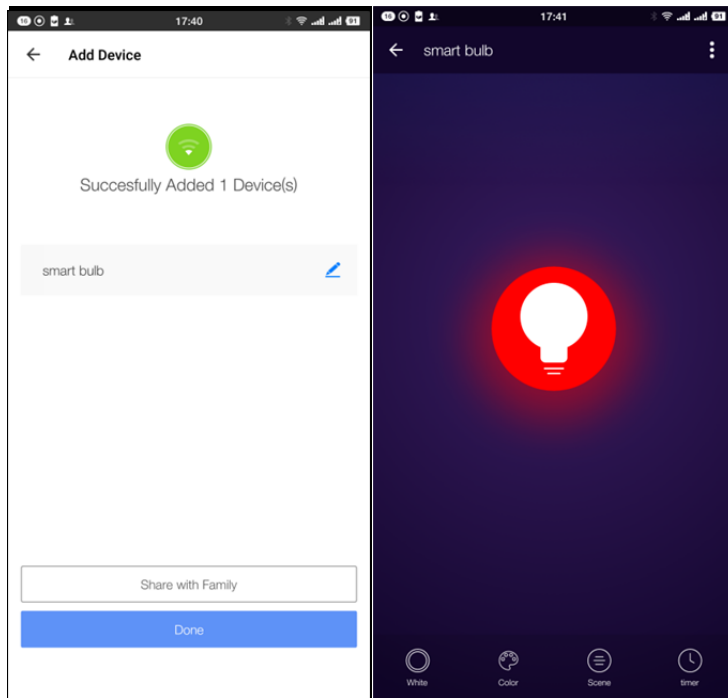


**Step 2:** Connect with the power supply, Make sure the WiFi smart bulb is standby(the white light flash rapidly ) Select confirm indicator rapidly blinks.

**Step 3:** Enter your WiFi password for your phone and click "Confirm" to enter the page of the search device.

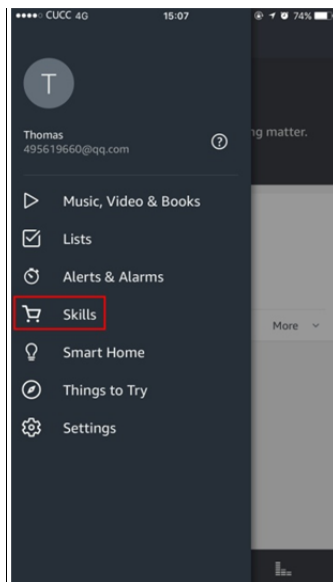


**Step 4:** Enter the device page, then complete the configuration

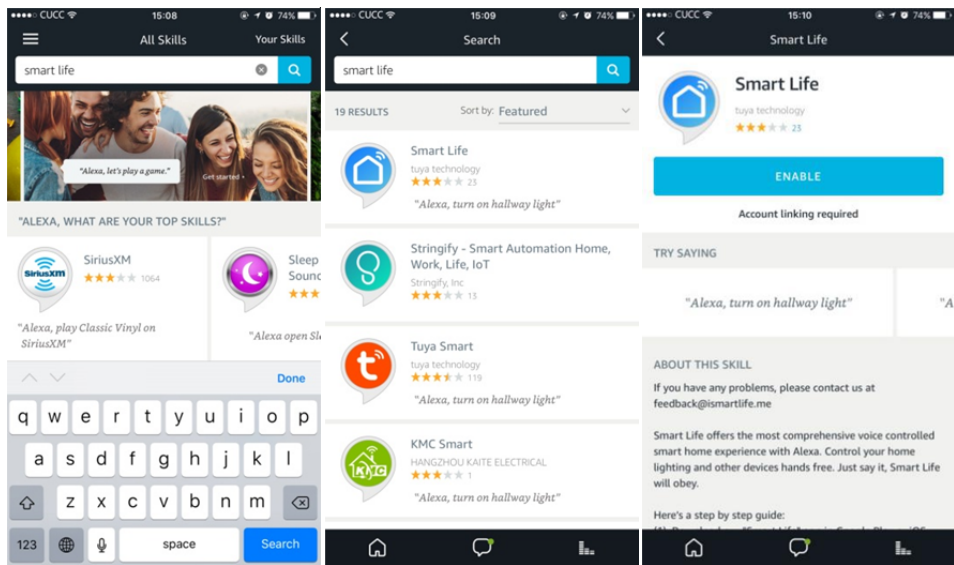


How to use Amazon Echo to control your Smart devices?

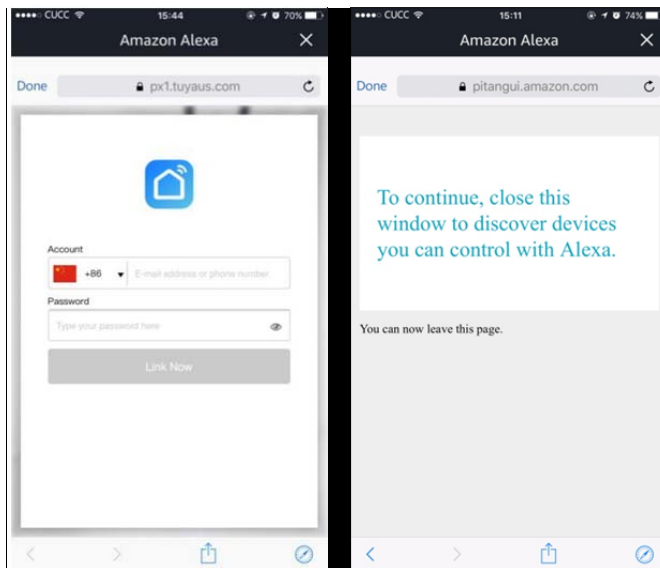
**Step 1:** Open the "Amazon Alexa" APP, then find the "Skills" button on the menu. Press it.



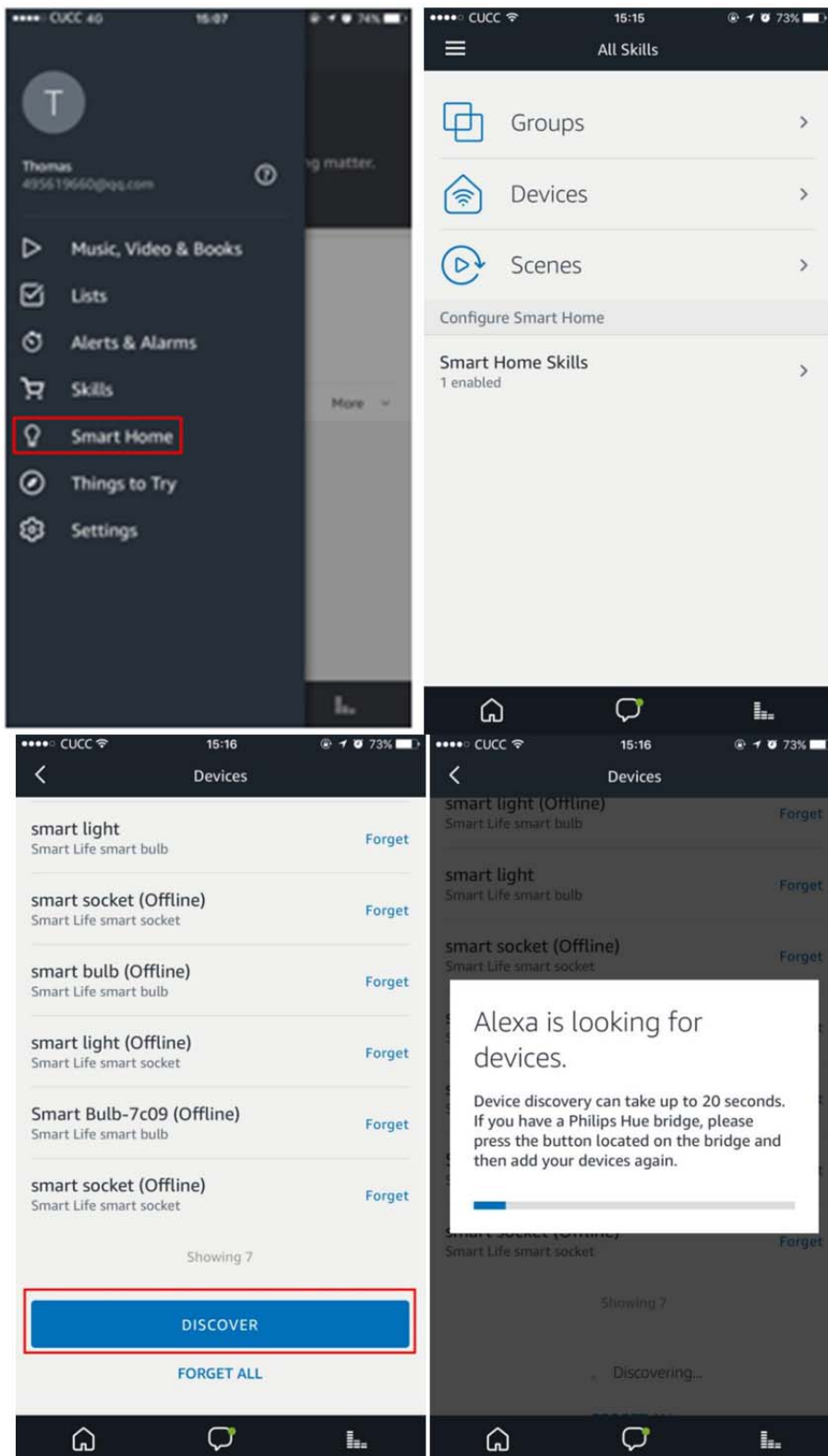
**Step 2:** Search the " Smart life" and choose the first one, then Enable it.



**Step 3:** Select your country code and Enter your "Smart life" APP Account and Password, then press the "Link Now" button. When the Account success to login press the "Done" button.



**Step 4:** Back to the menu, and press the "Smart home" button, then choose the "Devices", then press the "Discover" button.



**Step 5:** Now you can use your Alexa to control your Smart devices, enjoy yourself.



## **FCC Statement**

This equipment has been tested and found to comply with the limits for a Class B digital device, pursuant to part 15 of the FCC rules. These limits are designed to provide reasonable protection against harmful interference in a residential installation. This equipment generates, uses and can radiate radio frequency energy and, if not installed and used in accordance with the instructions, may cause harmful interference to radio communications. However, there is no guarantee that interference will not occur in a particular installation. If this equipment does cause harmful interference to radio or television reception, which can be determined by turning the equipment off and on, the user is encouraged to try to correct the interference by one or more of the following measures:

- Reorient or relocate the receiving antenna.
- Increase the separation between the equipment and receiver.
- Connect the equipment into an outlet on a circuit different from that to which the receiver is connected.
- Consult the dealer or an experienced radio/TV technician for help.

To assure continued compliance, any changes or modifications not expressly approved by the party.

Responsible for compliance could void the user's authority to operate this equipment. (Example- use only shielded interface cables when connecting to computer or peripheral devices).

This equipment complies with Part 15 of the FCC Rules. Operation is subject to the following two conditions:

- (1) This device may not cause harmful interference, and
- (2) This device must accept any interference received, including interference that may cause undesired operation.

## **FCC Radiation Exposure Statement:**

The equipment complies with FCC Radiation exposure limits set forth for uncontrolled environment. This equipment should be installed and operated with minimum distance 20cm between the radiator and your body.