

DUO·Aria™

MULTI·FORMAT DIGITAL PLAYER

Owner's Manual



 DIGISETTE™

Digisette, LLC
P.O. Box 435
New Vernon, NJ 07976

the **first** dual-purpose
digital audio player

Page 2	Welcome to the DUO-Aria Experience
Page 3	Included with Your DUO-Aria Player
Page 4	PC System Requirements
Page 5	DUO-Aria Player Hardware Overview
Page 8	Software CD Contents
Page 9	Installing the DUO-Aria Manager
Page 11	Getting Started with DUO-Aria
Page 12	Using the DUO-Aria Manager
Page 14	How to download files to DUO-Aria player
Page 15 ..	Operating the DUO-Aria Player (Stand-alone with headphones)
Page 16	Inserting the DUO-Aria Player into a Cassette Deck
Page 17	DUO-Aria Cassette Deck Operation
Page 18	Audible.com Content Operation
Page 20	Handling and Storing Instructions
Page 21	Battery and Charger(AC and DC charger) Usage
Page 23	Trouble shooting Problems
Page 24	Setting USB Drive
Page 25	Warranty Service



Congratulations on your purchase of the DUO-Aria portable digital player - the only MP3 player on the market specifically designed to play digital music on any standard analog cassette deck with high fidelity sound and without the need for cumbersome and inconvenient adapters. The DUO-Aria player contains 32MB of on-board memory that is easily expandable to 96 MB via the MultimediaMemoryCard™ (MMC) flash memory slot. The DUO-Aria also was designed with a programmable, upgradable Digital Signal Processor (DSP) to support new audio formats and digital rights management systems. Please check the Digisette website at www.digisette.com for the latest software upgrades and accessories. You are now ready to enjoy the world of digital audio with the most versatile digital audio player on the market today.



The following components are included with your DUO-Aria player:

- A. AC Battery Charger
- B. DC Car Power Adapter / Battery Charger (AR-200, AR-300)
- C. Ni-MH Rechargeable Battery
- D. Software CD
- E. USB Connection Cable
- F. Carrying Case (AR-200, AR-300)
- G. Earphones
- H. User's Manual
- I. Charger Connection Cable (AR - 200, AR-300)



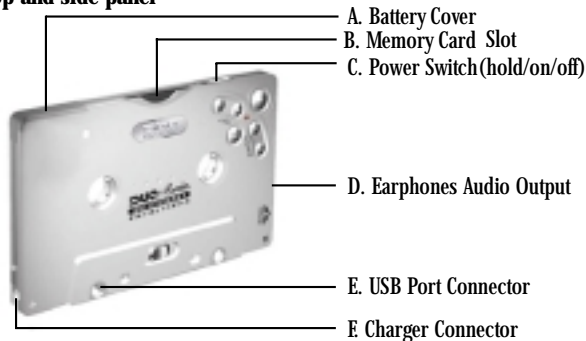
Note :
Accessories and optional items are subject to change. Please check www.digiset.com for the latest in DUO-Aria accessories and software upgrades.

The following PC specifications are required for DUO-Aria usage:

- Microsoft® Windows® 98, ME or 2000 Operating System
- CD-ROM Drive with digital Audio extraction support
- Pentium (or compatible) 200MHz or higher processor
- 32MB RAM (64MB for Windows® ME or 2000) or greater
- 32MB free Hard Disk Space (more for digital audio file storage)
- Sound card
- USB port capability

Your DUO-Aria player has the following hardware features :

Top and side panel



Top and Side Panel

- A. Battery Cover :** Slide the cover on top of the unit away from the control buttons to open, and then open to insert your rechargeable DUO-Aria battery.
- B. Memory Card Slot :** A removable MultiMediaCard™ (MMC) flash memory card (sold separately) enables your DUO-Aria to expand its memory capacity and store more audio files. MMC memory cards are inserted completely into the unit with the gold contacts facing downward and positioned facing the back of the player.
- C. Power Switch :** Powers your DUO-Aria player on and off as well as enabling the Hold feature.
- D. Earphones Audio Output :** Connects your earphones for stereo output.
- E. USB Port Connector :** Connects your DUO-Aria player to your computer for fast, efficient file transfers at speeds up to 1.5 Mbps.
- F. Charger Connector :** The DC car charger and cable allow the DUO-Aria to be powered while simultaneously charging the battery when used in a vehicle.

Removable Memory Card

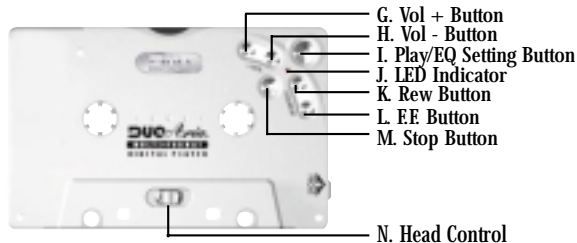


The DUO-Aria is compatible with MultiMediaCard (MMC) removable flash memory (sold separately), which enables your DUO-Aria to expand its memory capacity and store more audio content. When inserting or removing a MMC card, make sure the DUO-MP3 is OFF or the memory card may be damaged. MMC flash memory cards are inserted completely into the unit with the gold contacts facing downward and positioned facing the back of the player

Note :

When an MMC card is not used, the MMC cover that comes with the unit must be used and fully inserted into the player to prevent damage to the internal MMC slot.

Front Panel



Front Panel

G. Volume + Button : Press to increase Play Volume.

H. Volume - Button : Press to decrease Play Volume.

I. Play/ EQ Setting Button : Press to start Play Press again to change EQ setting when playing.

J. LED Indicator : When LED is flashing green, this indicates unit is playing. Green and Amber colors flashing in turn indicates initial booting or in USB communication.

K. Rew Button : Press to select previous file or Search.

L. FF Button : Press to select next file or Search.

M. Stop Button : Press to Stop, Pause Play or Power Save Mode.

N. Head Control : Slide control to adjust tape head alignment for optimal sound quality and compatibility in cassette decks.

Application**DUO-Aria Manager**Function

Transfer digital audio files to/from DUO-Aria

RealJukebox

Manage audio files and link to DUO-Aria*

Audible Manager

Download, playback of and transfer of Audible.com content to DUO-Aria**

Note :

* You can use RealJukebox to transfer audio files to DUO-Aria player.

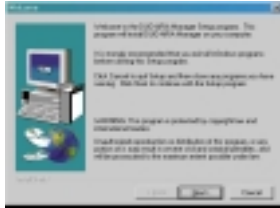
For this you need to install a software "plug-in" downloaded from the Internet. Follow these directions to install the latest "plug-in":

1. After installing and starting RealJukebox, connect to the Internet and then click on the "Tools" menu near the top of the screen.
2. From the "Tools" pull-down menu select "Preferences".
3. From the "Preferences" menu select the "Devices / Storage" tab.
4. From the "Devices / Storage" tab select "Add".
5. In the "Add Devices / Storage" box select "Update List".
6. When RealJukebox has completed updating the list of devices, scroll through the list and click on "DUO-Aria".
This should now be highlighted.
7. Then in the "Add Devices / Storage" box click "OK".
8. Once back in the "Preferences" box click on "OK".
9. You are now ready to use RealJukebox to transfer audio files to the DUO-Aria. RealJukebox online help will guide you through learning to transfer files to the DUO-Aria.

** Requires latest version Audible Manager software downloaded via included software CD and Internet download. Connect to the Internet, insert the Software CD, then select "Audible Manager" from the software installation menu.

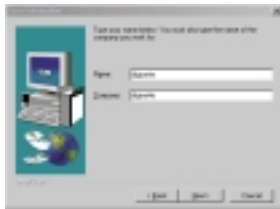
In order for the DUO-Aria player and your PC to communicate and transfer digital files, you must first install the DUO-Aria Manager CD by completing the following steps:

1. Load the CD into the CD ROM drive. The following screen will display.

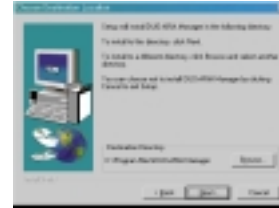


2. If the setup file is executed automatically, follow the install program instructions. If the setup file is not executed automatically, browse the installation CD and double-click on the Setup.exe file on the CD ROM file directory. (Example "D:/DUOARIAMANAGER/setup.exe", where D: is your CD-ROM drive)

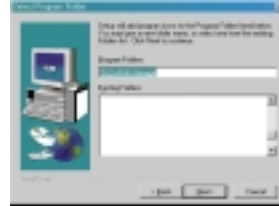
3. Enter your information and click Next on the following screen.



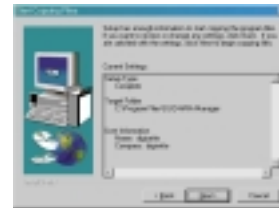
4. Choose the directory for the DUO-Aria Manager and click Next.



5. Select program folder and click Next.



6. Verify the setup details and click Next.



7. Once the installation of the DUO-Aria Manager finishes, click the shortcut icon on the desktop or click on the Windows Start menu, then Programs, then the menu to run the DUO-Aria Manager.

Note :

If a rebooting message displays during setup, install again after rebooting the computer.



Complete the following steps to get started with your DUO-Aria player:

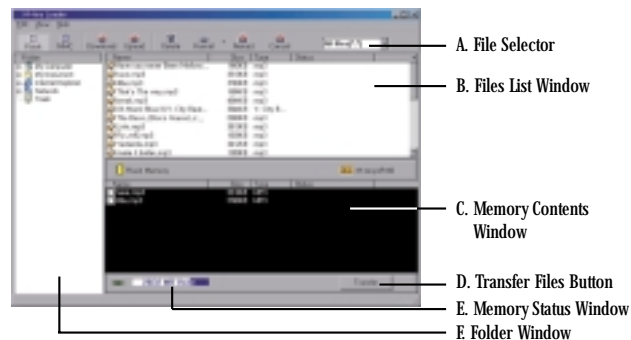
1. Make sure the battery is fully charged and insert it into your DUO-Aria player.
2. Connect the USB port cable to your computer, and then to your DUO-Aria player.
3. Turn your DUO-Aria player on. Then, open the DUO-Aria Manager on your computer.
4. Using the software, download music to your computer from the Internet or convert it from an existing CD. Then, save it to your DUO-Aria player.
5. Disconnect the DUO-Aria player from the USB cable, insert your earphones and turn the unit off, then on again BEFORE pressing Play. (This is necessary for resetting the on-board processor.)
6. Enjoy digital music on your DUO-Aria player.

Note :

Please do not attempt to use any other USB peripheral, such as a digital camera or scanner simultaneously with the DUO-Aria and RealJukebox, Audible Manager or DUO-Aria Manager software as communication errors may result.

Main Screen

The main screen of the DUO-Aria Manager controls music file downloading and uploading.



A. File Selector

This enables you to find the files selectively by type

B. Files List Window

This window displays the files contained in the given folder enabling you to selectively download files to flash memory and/or MMC memory.

C. Memory Contents Window

This window enables you to check the file title, size, type and download status of the MMC and on-board flash memories.

D. Transfer Files Button

This button begins transferring selected audio files to the player.

E. Memory Status

This indicates the amount of memory used, the amount of total memory and memory connection status. This window may indicate "No Memory Found" in the following cases:

- The DUO-Aria is not connected or the power is switched off.
- MMC memory is selected when a MMC memory card is not inserted into the player.

E Folder Window

This window enables you to select audio files more easily by allowing you to browse specific folders. It enables you produce, delete and rename folders on your PC. The selected folder contents are displayed in the File List Window to the right.

G. Functional Icons



Selects the on-board memory (Flash) to view.



Selects the removable memory (MMC) to view.



Adds the selected files to the selected memory, selected files are placed in "Ready to transfer" status in the Memory Contents Window.



Uploads of the selected files on the DUO-Aria Memory to the selected PC folder.



Deletes selected files on selected memory.



Formats selected memory. Note: This will erase all files on the selected memory.



Refreshes view of selected memory.



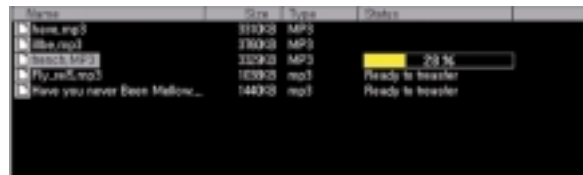
Cancels file transfer between DUO-Aria and PC.

When downloading to player using the DUO-Aria Manager:

1. Select player memory to download and store audio files. (either on-board Flash memory or MMC when using removable MMC flash memory cards)
2. Highlight files to be downloaded in the File List Window using the Folder Window to browse for PC folders containing audio. You may select files one of 3 ways:
 - 1) You may drag & drop individual files from the File List window to the Memory Contents Window or
 - 2) You may select multiple audio files by holding down the CTRL key while clicking the left-mouse button on each song you wish to download to the player then drag and drop the selection of files as above or
 - 3) you may press the "F5" key or "Add" icon after highlighting each file.

The selected files will appear in the Memory Contents Window with "Ready to transfer" listed under the status column.

3. Click the "Transfer" icon to start downloading selected files to player memory.



4. To cancel a download in progress click the "Cancel" icon.


Note :

The RealJukebox™ and Audible Manager™ software included with the DUO-Aria have online instruction manuals that may be printed out once they are installed.

OPERATING THE DUO-Aria PLAYER (Stand-alone with headphones)

15

<u>Desired Operation</u>	<u>Buttons</u>	<u>Function When Pressed</u>
Turn power on	Slide power switch to on	Powers the Player on.
Turn power off	Slide power switch to off	Powers the player off.
Play audio file	Press Play	Begins to Play audio/Restarts from Pause.
Pause audio file	Stop (press <for 1 second)	Pauses audio playback.
Increase Volume	Vol +	Increases the audio Volume.
Decrease Volume	Vol -	Decreases the audio Volume.
Previous Track	Rew	Plays previous audio file.
Next Track	FF	Plays next audio file.
Rewind audio	Rew (hold Rew for > 1 sec)	Advances audio at 2X speed as long as the button is depressed.
Fast Forward Audio	EE (hold EE for > 1 sec)	Advances audio at 2X speed as long as the button is depressed.
Key Lock	Slide power switch to hold	Locks the button functions when power is on.

 Slide On/Off switch on top of unit to "On" position.

FOR EQUALIZER FUNCTIONS (while audio is playing)

<u>Desired Operation</u>	<u>Buttons</u>	<u>Function When Pressed</u>
Change Equalizer	Play/EQ	Toggles equalizer mode while audio Mode is playing. (Jazz, Pop, Classical, Normal)

The DUO-Aria functions can also be controlled by a remote control with an LCD display.(optional item)

Pause/Power Save Mode

The DUO-Aria features a Power Save mode that allows the player to automatically conserve its battery power when not in use. When the player presses the Stop button for less than 5 seconds, and/or if the player senses it is not used for 10 minutes, it will automatically enter Power Save mode. To resume play if the power switch is left in the "On" position, press the Play button twice.

Note : The DUO-Aria will resume play from the exact point in the audio track that it was last stopped after stop button pressed. The volume setting is also memorized, but the EQ setting is not memorized and will default to the Normal EQ mode when first resuming play.

**INSERTING THE DUO-Aria PLAYER INTO A CASSETTE DECK**

16

The following is the correct way to insert the DUO-Aria player into a cassette deck.



1. Turn the DUO-Aria Player by moving the power switch on top of the unit to the "On" position.
2. Due to potential variances in the volume of encoded audio files, the cassette audio output of the DUO-Aria is adjustable. When the unit is first turned on, the volume is set to a medium level of output. You may adjust the output to a cassette deck by pressing Play (note that the indicator lamp should be illuminated), then adjusting the volume either up (+) or down (-) to suit the desired output to the cassette deck.

Note :

It is possible to adjust the output volume high enough to cause distortion during cassette audio playback on some cassette decks. Avoid distorted output by matching the volume of the DUO-Aria playback with the FM tuner volume.

3. Insert the DUO-Aria into the cassette deck, making sure the side marked Front (the side with the operating buttons) is inserted upward or forward.
4. You may adjust head control switch to ensure optimal tape head alignment. Typical indications of improper tape head alignment is audio playing only on one side, significantly reduced volume, or much extraneous noise coming from player.
5. If no sound is played from the cassette deck or if adjusting tape head control does not improve audio quality significantly, change the play direction with the auto-reverse button (if applicable) and flip the DUO-Aria cassette so it is facing down.



DUO-Aria CASSETTE DECK OPERA

Desired Operation	Buttons	Function When Pressed
Turn power on	Slide power switch to on	Powers On the Player, enabling it to be inserted for use in a cassette deck.
Play Music	Use cassette deck Play control	Begins audio playback.
Pause Music	Use cassette deck Pause control	Pauses audio playback.
Stop	Use cassette deck Stop control	Stops audio playback.
Increase Volume	Use cassette deck Volume control	Increases audio volume.
Decrease Volume	Use cassette deck Volume control	Decreases audio volume.
Next Track	Press cassette deck EE for less than 1 second	Skips forward to the next track.
Previous Track	Press cassette deck Rew for less than 1 second	Begins audio playback of previous track.
Rewind audio	Press and hold Rew for more than 1 second	Advances audio at 2X speed as long as depressed.
Fast Forward audio	Press and hold EE for more than 1 second	Advances audio at 2X speed as long as button is depressed.

Power Save Mode in Cassette Deck Playback

The DUO-Aria features a Power Save mode that allows the player to automatically conserve its battery power when not in use. When the player senses it is not use for 10 minutes, it enters a Power Save mode. To resume play when in a cassette deck, eject the DUO-Aria from the deck and press the play button. Re-insert the DUO-Aria into the deck and the unit will resume play from the exact point in the audio track that it was last stopped. This will also occur if the battery is replaced during play. Note: The EQ setting and tape head output volume is not memorized and will default to Normal EQ mode and standard tape head output volume when resuming play in a cassette deck.

AUDIBLE.COM CONTENT OPERATION

The DUO-Aria is AudibleReady™, enabling you to enjoy a world of spoken audio content available from Audible.com. The Audible Manager, contained on the DUO-Aria software CD, must be installed on your PC to download Audible.com content and transfer it to the player.

If you have not installed the Audible Manager and wish to access Audible.com content, please insert the software installation CD, follow the on-screen instructions to install the Audible Manager software, or click on the Start menu of the Windows Taskbar, then click Run. In the dialogue box that appears, type D:/Audible Manager/setup.exe (where D: is the CD-ROM drive). Follow the onscreen instructions to complete the installation.

1. Stand-alone DUO-Aria Player Operation

Desired Operation	Buttons	Function When Pressed
Skip to next/previous Track	Press EE/Rew Once	Skips a track.
Skip to next/previous Section	Press and Hold EE/Rew for 1~2 sec	Skips a section within the current track.
Search Through a Track	Press and Hold EE/Rew > 3 sec	Searches within a section at 2X normal play speed as long as the button is depressed.

2. Cassette Deck DUO-Aria Player Operation

Desired Operation	Buttons	Function When Pressed
Skip to next/previous track	Press and hold EE/Rew > 1 sec then resume Play	Skips a track.
Skip to next/previous section	Press and hold EE/Rew 1-2 sec then resume Play	Skips a section within a track.
Search forward /backward	Press and hold EE/Rew > 3 sec then resume Play	Searches within a through a section section at 2X Speed for as long as EE/Rew button is depressed.

Note :

The above Power Save operation instructions also apply when playing back Audible.com content.

3. Bookmark Function

Depending upon the content being listened to, there may be a need to stop the unit and resume play at the point where the player was stopped. To accomplish this with the DUO-Aria there are three options:

- 1) While listening to audio, press the Stop button once quickly to enter Pause/Power Save mode with the unit still on. To resume play at the exact point the audio was stopped, press the Play button once.
- 2) While listening to audio, press the Stop button for more than 3 seconds to completely power down the unit. To resume play at the exact point the audio was stopped, briefly slide the Power Switch to the "Off" position and then back to the "On" position, then press the Play button.
- 3) Slide the Power Switch to the "Off" position. To resume play at the exact point the audio was stopped, slide the Power Switch to the "On" position and press the Play button.

The DUO-Aria was designed for everyday use with its aluminum casing and its solid-state design provides for skip-free audio playback under most active situations. Please bear in mind the following information when using the DUO-Aria.

Unit may be damaged if struck or crushed.

Use a carrying case when carrying and using your DUO-Aria.

Keep out of direct sunlight.

Keep away from dust and dirt.

Clean with a dry, soft cloth.

Store in a cool dry place.

Do not store your DUO-Aria around a television set due to the magnetic field interference that may result with the TV.

Do not press the DUO-Aria player body. The excessive pressure on the body could cause the damage of inside mechanism sensitive to the external damage.

Do not touch the belt. It may cause bad effect on the tape simulation function.

Do not leave the DUO-Aria player inside a car in summer under direct sunlight.

Normal playing time is about six hours when playing the DUO-Aria as a stand-alone player and

8 hours for Audible content playback. Playing time may vary depending on usage conditions. Due to extra sensors used during cassette deck playback, playing time when used in a cassette deck only is slightly reduced.

1. Charging battery only(AC or DC charger)

Charge battery for two or three hours until the charge lamp is off. It is recommended to charge the battery for 4 hours before first use. When the battery is fully charged, the charger lamp goes out immediately. Unplug the charger when it is not in use.

2. Charging the battery when it is inside the DUO-Aria (AC or DC charger)

Connect the DUO-Aria (with the battery inserted) and Charger with the connection cable provided. It is VERY IMPORTANT when using the charger cable with the DUO-Aria to insert it AND remove it from the on-board power jack by holding the connector end. Pulling only on the cord to remove it from the jack or inserting it in an improper manner can result in permanent damage to the jack. When the battery is fully charged, the charger light goes out immediately. Unplug the charger when it is not in use.



When initially charging the battery, it is recommended to leave the battery in the charger for more than 2 hours, even if the charger LED stops illuminating. Under certain conditions, the charger LED may falsely stop illuminating before the battery is fully charged. Leaving the battery for at least 2.5 hours will ensure a full charge.

Note :

1. When you play DUO-Aria player in a car deck during battery charging ensure that the battery is inserted and the charger cable is connected properly.
2. If the battery is not used for a week or longer, it may lose its part or all of its charge.
3. If the battery is repeatedly recharged before being discharged completely, its total playing time may be shortened.
4. If the battery playing time is significantly shorter than when you purchased the unit, you may need to purchase a new battery.
5. You may charge the battery for an additional 30 minutes after the charge lamp has turned off to ensure a full charge.
6. When the battery reaches approximately 5 minutes of remaining run time, an intermittent beeping will sound in either stand-alone or cassette deck play until the unit automatically shuts off.
7. Due to the variance among cassette deck manufacturers, there may be some cases where it is not possible to use the DC charging cable to power the DUO-Aria when used inside of cassette mechanism.

The DUO-Aria player will not download digital files from the PC.

- ▶ Verify that the unit is switched "On".
- ▶ Check to see if the battery is fully charged.
- ▶ Check the cable connection to the USB port.
- ▶ Verify that the battery has been inserted correctly.

The DUO-Aria player will not play

- ▶ Verify that the unit is switched "On".
- ▶ Verify that the battery has been inserted correctly.
- ▶ Check to see if the battery is fully charged.
- ▶ Verify that the player is inserted correctly into the tape deck.
- ▶ If used in a cassette deck, check tape player direction (DUO-Aria will only play properly in one tape direction)
- ▶ Verify that the MMC card is inserted properly, if applicable

The DUO-Aria sound is not clear in a cassette deck, or sound comes only from the left or right speakers.

- ▶ Verify that the unit is on.
- ▶ Adjust the tape head control position for optimal alignment with the tape deck head.
- ▶ Reposition the DUO-Aria with the front side down and press auto-reverse to play bottom side.

The DUO-Aria Manager does NOT recognize the hardware connection.

- ▶ Verify that the unit is switched "On".
- ▶ Verify that the battery has been inserted correctly.
- ▶ Check to see if the battery is fully charged.
- ▶ Check the cable connection to the USB port.
- ▶ You may need to re-install the software.

The DUO-Aria player does not respond to cassette deck controls (Play, FF and/or Rew) when first used in a cassette deck.

- ▶ Rotate the DUO-Aria cassette wheels manually using a finger in a clockwise and counter clockwise motion 4~5 times. Re-insert DUO-Aria player into the cassette deck.

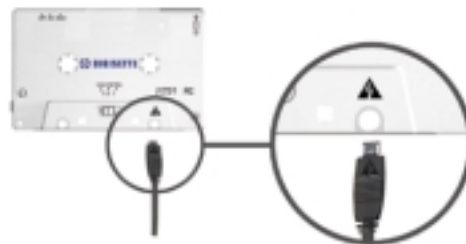
Please visit the Digiset website at www.digiset.com for the latest updates and software upgrades for the DUO-Aria.

If a USB driver to control DUO-Aria already exists in PC, there is no need to install a new driver.

- Insert Software CD into CD-ROM Drive (Do not execute the installation program.)
- Connect the DUO-Aria Player to PC with USB cable.
(If there is no USB driver to communicate between the DUO-Aria and the PC, the "New Hardware Wizard" will appear on the screen.)
- Proceed the installation following the on-screen instructions.
When the location of the drive is asked, select the folder of your CD-ROM.
(When the installation finishes once, The New Hardware Wizard will appear on screen again.)
- Follow the on-screen instructions to complete the installation of the USB driver.

IMPORTANT NOTE :

When connecting the cable with DUO-Aria player, ensure the correct orientation of the connector end, and do not force the connector. Improper connection with the USB cable can cause damage to the computer and/or the DUO-Aria player.



Customers are entitled to warranty service for a period of one (1) year from the date of purchase. Warranty service does not apply to defects resulting from customer fault or acts of God.

Non-warranty service shall apply to defects resulting from:

1. Infiltration of foreign matter, such as water, liquid, or sand.
2. Breakage due to dropping or severe impact.
3. Damage to or deformation of the outer case caused by organic solvents, such as benzene.
4. Use of parts other than those certified by the manufacturer.
5. Loss or breakage of any parts or components caused by unauthorized disassembly.
6. Repair or modification done by any persons other than manufacturer authorized personnel.
7. Acts of God, such lightning, storms or floods.

For more warranty information and service options, please see the Digisetite Limited Warranty and How To Receive Service cards enclosed in the DUO-Aria package. You may also visit the Digisetite web site at <http://www.digisetite.com> for more information.