

mobiBLU[®] BOXON



MULTI FORMAT DIGITAL AUDIO PLAYER

User's Manual



SRS is a registered trademark of SRS Labs.

WOW Technology is an intellectual property of SRSLabs.

View Index

- 1 - Special Features
- 3 - Technical Specifications
- 4 - Accessories
- 5 - Part Specifications
- 7 - Buttons
- 8 - Recharging
- 9 - Connecting to a PC
- 10 - Disconnecting
- 12 - Power ON/OFF
- 13 - Play Menu
- 14 - Play/ Pause
- 15 - Music Selection
- 16 - Voice Recording
- 18 - FM Radio Function
- FCC RF INTERFERENCE STATEMENT
- Warranty Card

Special Features



World' s smallest Mp3 Player

Super Slim size. A fully featured MP3/audio player that fits in the palm of you hand!



COLOR Display

COLOR Display combined with blue letters brings new beauty to the unit. COLOR Display provides superior sharpness, brilliance and easy to read display.



Five Preset EQ modes plus one User-set EQ mode

Features equalization modes and you can also customize equalization to suit your sound.



File Navigation System and Unlimited Folder Capacity

The player can play MP3 files saved in multiple folders. Those files and folders can be selected and played as if in a Windows environment.



Easy & Convenient Clock

Built in clock keeps you on time.

Special Features



PC Peripheral Device

By connecting the product to PC, the Windows system automatically recognizes it as a removable disk. No additional software needed. It can also be used as storage for other types of files.



FM Radio receptor and recorder

Enjoy FM radio listening as well as digital music files (MP3/WMA). It can also record your FM programming which allows you to listen to it over and over or to save it on your PC.



Voice Recorder

Built in high quality microphone allows you to record your voice.



Built-in Lithium-Polymer Battery

No extra battery or recharger is required. This advanced battery system is easily recharged by connecting into the USB port on your PC.



Resume Function in Second Unit

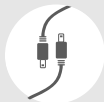
Settings are automatically restored when the unit is powered ON in case of sudden power down.

Technical Specifications

Functions	Items	Specifications
FM Tuner	FM Frequency Range	87.5 MHz~108.0MHz/ 76.0MHz~108.0MHz
	Headset Output	Max. 7mW (16) Max Volume
	S/N Ratio	50dB
	Antenna	Headset/earphone antenna
Audio	Frequency Characteristics	20Hz ~ 20KHz
	Headset Output	Max. 12mW (16) Max Volume
	S/N ratio	90dB
Supporting Files	File format	MP3, WMA, WMA DRM
	Bit Rate	MP3 : 8~320Kbps, WMA : 32~192Kbps OGG ~ Q10
USB	Download speed	25Mbps (USB Ver 2.0)
Recording Time		Max 10 Hr
Operating Temperature		-5°C ~ 70°C
Size (W × H × D)		50 X 42.7 X 12.6 (mm)
Weight		18 (g)
Battery (Built-in)		Li-Polymer

Accessories

- ※ Illustrations may be different from the actual product.
- ※ Accessories shown below may be different from purchased products to improve quality of the unit.



USB / Charging
Cable



Program CD



User's Manual



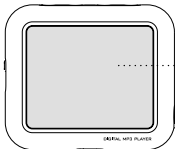
Earphone



Protective Case

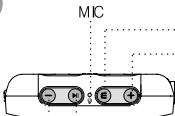
Part Specifications

아래면



LCD Display

앞면



MC

Repeat A-B, EQ Button

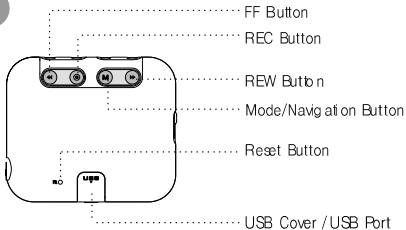
VOL+ Button

Power, Play, Pause Button

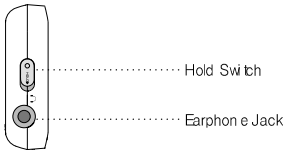
VOL- Button

Part Specifications

뒷면



앞면



Buttons



- Power ON/OFF
- File Play/ Pause



- Searching Previous/Next File
- Move to Left/Right Menu



- Move to Navigation sub/preceding Folder



- Volume Up/Down



- Move to Navigation sub/preceding folder or file



- Recording
- Recording Start /Stop



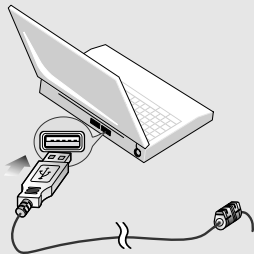
- Menu Function



- Repeat A-B
- EQ

Recharging

To recharge the battery use the USB cable to connect the unit to the PC.



Note!

- It takes approx 3 hours to completely recharge a fully discharged battery.
- Recharging is not interrupted while downloading/uploading files from/to PC.
- Recharge the product using USB cable when LCD screen is not activated.

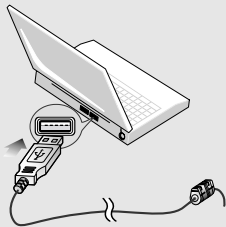
Connecting to a PC

Note!

- What is USB (Universal Serial Bus)? This is a new connection system between PC and peripheral devices.
- Connect the USB cable supplied with the product into a USB port in PC. Any unexpected error can happen when connecting to the USB port in front of PC or USB hub.
- Windows version 98SE or lower will not detect the DAH-1500i as a peripheral device. To have your PC detect the player Install the Program CD supplied.

USB Cable Connection

Connect one end of the cable into a USB port on the back of your PC and the other end to the earphone jack of the DAH-1500i.



Disconnecting

■ Windows ME, 2000 and XP Operating Systems

- 1 Double click on the green arrow on the right-bottom part of the initial Window screen.



- 2 Click on "Stop" and "OK" after selecting USB High Capacity Storage Device



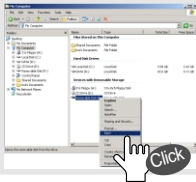
Disconnecting

- 3 Click “OK” on “Safe To Remove Hardware” window and remove the cable.



■ Disconnecting with Windows 98SE

Open “My Computer” or Windows “Search”. Select “Removable Disk”. Using the right mouse button select “Remove”. Remove the USB cable.



Note!

- Removing the cable without following the instructions above will display a warning message and may cause a fatal error in PC or the product.
- Removing the cable while downloading or uploading files, or while formatting files may cause a fatal error in PC or the product.

Power ON/OFF

Turn Power ON



Press and hold the play/pause button to turn the power on.

Note!

- When the battery needs recharging the LCD will display the "Battery Low" icon.
- Recharge the battery when LCD is not activated.

Turning Power OFF



Press and hold the play/pause button to turn the unit off.

Note!

- When no button manipulation in pause condition is done after the set period of time for "Auto Power Off," it automatically turns off the power.
- When you try to play a file after the restarting of the product, it completely recovers all previous setting. All track numbers, equalizer and other settings are recovered. (Resume function in second unit)

Play Menu



- Activates/Disables menu function
- Returns to submenu/ main menu



- Moves right/left menu
- Control setting



- Activates submenu/ setting menu
- Saves current setting

※To access detailed explanation about menus see.

Play/ Pause

파일 재생하기



Press the play/pause button once to play a selected file.

파일 일시정지하기



Press the play/ pause button once more to stop play.

음량조절하기



• Press "+" or "-" to increase or decrease the volume incrementally.



• Press and hold "+" or "-" to increase or decrease the volume continuously.

Music Selection

When music is paused



Press the file selection buttons to skip to the next /previous file without playing the file.



While playing music file

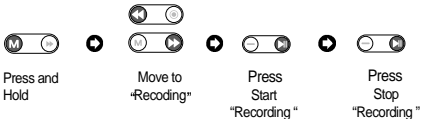


Press the file selection buttons once to skip to the next or previous file and the file will play.



Voice & Music Recording

음성 녹음하기



- Recording is paused by pressing play button while recording. To continue recording press play button again.

Note!

- You can play back your recorded voice at listen mode
- Voice recording is automatically stopped and saved when memory becomes full.
- The volume of recorded voice can be controlled by pressing Setting → Record Set → Record Gain
- Voice recording may not work properly when battery is low.

Voice & Music Recording

Play Back

※ Recorded voice and FM Radio Program can be played on Listen Mode.



Press and
Hold



Move to
'Listen'



Press
change to
'Listen' mode



Press
to play
recorded file

- Use FF/REW button to search for recorded files
- Voice recorded files are shown as V001.mp3, V002.mp3, while Radio recordings are shown as F001.mp3, F002.mp3, etc
- Listen Mode only plays recorded voice or FM files Moving Vxxx.mp3, or Fxxx.mp3 files to other folder disables Listen Mode to play them back.

FM Radio Function

Listening to the FM Radio



Press and
hold



Display
changes to FM
Radio



Press



Listen to Radio

Note!

- The earphone also acts as the radio antenna.
- Local frequency ranges vary globally.

Reception/ Reception Standby



Press



Standby status



Press

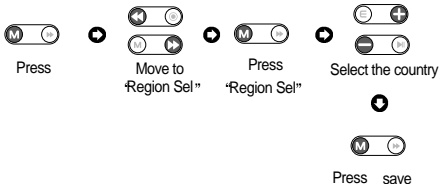


Reception

FM Radio Function

Region Select

This allows to search for FM frequency range for different regions, since the frequency is variable according to different countries.



Standard : Search for 87.5-108.0MHz by 100 KHz increments.

Europe : Search for 87.5-108.0MHz by 50KHz increments.

Japan : Search for 76.0-108.0MHz by 50KHz increments.

■ After saving exit Settings by pressing

FCC RF INTERFERENCE STATEMENT

Note

This equipment has been tested and found to comply with the limits for a Class B digital device, pursuant to Part 15 of the FCC Rules. These limits are designed to provide reasonable protection against harmful interference in a residential installation.

This equipment generates, uses and can radiate radio frequency energy and, if not installed and used in accordance with the instructions, may cause harmful interference to radio communications. However, there is no guarantee that interference will not occur in a particular installation.

If this equipment does cause harmful interference to radio or television reception which can be determined by turning the equipment off and on, the user is encouraged to try to correct the interference by one or more of the following measures.

- Reorient or relocate the receiving antenna.
- Increase the separation between the equipment and receiver.
- Connect the equipment into an outlet on a circuit different from that to which the receiver is connected.
- Consult the dealer or an experienced radio, TV technician for help.
- Only a shielded interface cable should be used.

Finally, any changes or modifications to the equipment by the user not expressly approved by the guarantee or manufacturer could void the warranty the users authority to operate such equipment.

CAUTION

Changes or modifications not expressly approved by the manufacturer could void the warranty.

THIS DEVICE COMPLIES WITH PART 15 OF THE FCC RULES. OPERATION IS SUBJECT TO THE FOLLOWING TWO CONDITIONS: (1) THIS DEVICE MAY NOT CAUSE HARMFUL INTERFERENCE, AND (2) THIS DEVICE MUST ACCEPT ANY INTERFERENCE RECEIVED INCLUDING INTERFERENCE THAT MAY CAUSE UNDESIRE OPERATION.

Warranty Card

Product Name:

Model:

Date of Purchase: (m) (d) (y)

Name of Customer

Telephone Number:

Address:

Name of Agent:

Telephone Number:

Address:

1 year from the
date of purchase

HW Hyun Won Inc.

- You need to present this Warranty Card with the date of purchase written thereon when required in order to receive satisfactory services. Please keep this card in a secure place.

1. The warranty service for the product shall be provided based on the information contained in this Warranty Card.
2. The warranty service is available effective from the date of purchase, so please put the date of purchase on this Warranty Card. (If the date of purchase is not identified in the card, the effective warranty period will start from the date 6 months from the date of manufacture.)
3. This Warranty Card can not be reissued

The design and size of the product are subject to change without prior notice in order to improve product quality.

***mob*BLU[®]**
www.mobiblu.com