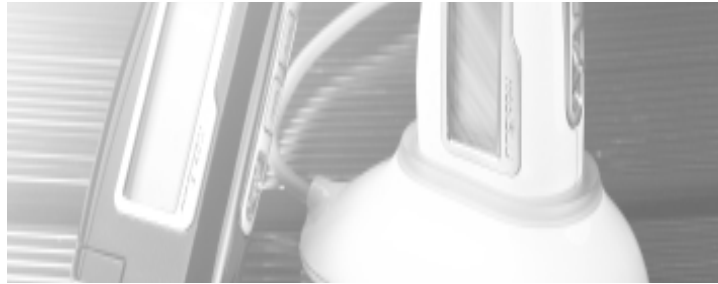


APPENDIX H  
: USER'S MANUAL

# *moBiBLU*

## User Manual

Model No. : DAH-1200



### Technical Support

Tel : (82) 54-338-6000(+4 ext.)

E-mail : [call@hyunwoninc.com](mailto:call@hyunwoninc.com)

<http://www.hyunwon.com>

### USA & Canada

Toll Free No. : 1-888-283-2580

E-mail : [support@hwiamerica.com](mailto:support@hwiamerica.com)

<http://www.hwiamerica.com>

 Hyun Won Inc.

## Multi Format Digital Audio Player

- MP3 & WMA Playback
- FM Radio
- Voice Recorder
- Music Encoder



## Safety Instructions

### IMPORTANT NOTICE

#### About copyrights

A copyright gives certain exclusive ownership rights to the person who creates an original work. These rights are protected by the U.S. and international laws. It is illegal to reproduce copyrighted material without the permission of the copyright owner.

Whenever you copy, or make a direct-encoded recording, of music or a video, or other original work that you did not create, consider that it may be copyrighted. Ownership of a CD or licensed digital media files that you downloaded from the Internet, or made a direct-encoded recording of, does not necessarily constitute the right to redistribute or share the content.

If you intend to redistribute or share content, be sure you have the necessary permissions to do so.

#### ► Warning

- To reduce danger of fire or electric shock, do not expose the product to rain or moisture.
- Do not release or distribute the music files formatted in WMA or MP3 from the product to the public. (As this would violate Copyright laws.)  
The software contained on the installation CD-ROM is for personal use only and it not to be distributed.

#### ► To maintain best quality from the player

- Do not use the product in hazardous conditions, such as extremely high/ low temperatures, dusty area, or excessively wet areas.
- Do not leave the product in the bathroom, near/ on a heater, or in a car parked in the direct sunlight.
- Do not leave batteries in pockets with any metallic substance such as coins or keys. (Doing so may cause fire from the batteries contacts)
- Throwing or dropping the product can cause shock damage.

#### ► Avoid sudden shock

- Any data lost due to careless use is not our responsibility.  
(Any valuable data should be stored on your PC)

#### ► Caution when using headset

- Auditory sense may be damaged when listening to the music at a high volume for extended time periods.
- Using a headset while driving a car or riding bicycle/motorcycle is not recommended.
- Use caution when walking or jogging with device.
- Ear-in type headset should have a long wire to be located at the back of the neck.
- Do not ever disassemble to repair or rebuild the product as it may cause permanent damage.

## Contents

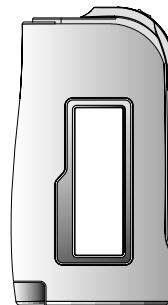
1	.....	Welcome to the world of MP3
2	.....	What is a digital audio player?
3	.....	Product Specification
4	.....	PC System Specification and Accessories
5	.....	Hardware Overview
6	.....	Power Supply
8	.....	Installation of M-ANY Loader Plus
10	.....	How to connect MP3 with PC
11	.....	When USB Port is not recognized
12	.....	How to use mobiBLU Loader Plus
14	.....	How to format Memory
16	.....	How to download files
18	.....	How to upload files
19	.....	Explanation of LCD DISPLAY
20	.....	Power On and Off & Auto power off
21	.....	How to use Folder Navigation Mode
24	.....	Set up Repeat modes
25	.....	Set up Section Repeat modes
26	.....	Set up EQ Modes and Fast Searching
27	.....	Set up User's EQ ( User1, User2 )
28	.....	How to Record Voice
29	.....	How to Record Music
31	.....	Listening to Voice recorded files or Music files
32	.....	How to Erase files
33	.....	How to use FM RADIO
35	.....	Searching FM frequency
36	.....	Saving the frequency ( Preset Mode )
38	.....	Erasing saved frequency
39	.....	How to Record FM Radio
40	.....	Return to Music Play Mode
41	.....	Set up HOLD ( Lock key )
42	.....	Remote Control Manual
44	.....	How to check the O/S and manager version
45	.....	How to upgrade mobiBLU Loader Plus
46	.....	How to upgrade Firmware ( O/S )
48	.....	Troubleshooting Problems
50	.....	WARRANTY SERVICE
51	.....	FCC RF INTERFERENCE STATEMENT

## Welcome to the world of MP3

Thank you for purchasing portable digital audio player 'MP3' .

MP3 is MP3 Player with simple design and FM Radio function.

MP3 has built-in memory of 64/96/128/256/512MB. It is able to support for format of new music and is made to cope with the problem of intellectual property. You can enjoy various content such as digital music and talk by playing a cutting-edge digital audio player.



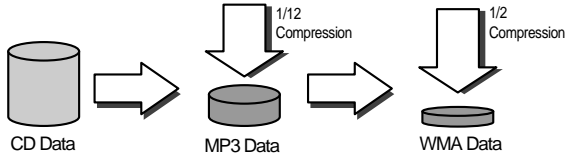
### Caution

As Hyun Won Inc. owns copyright of this product, you must get approval from the company when using its description, picture, software and other related documents. In the case of breach, you can be penalized by the court of law. The content of the description could be changed without prior notice.

## What is a digital audio player?

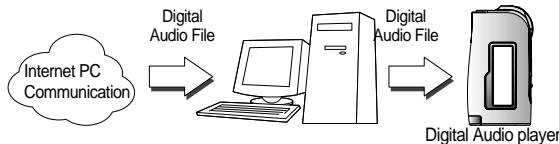
- **What are MP3 and WMA File?**

MP3 and WMA files are compressed(1/12) data taken from CDs through MPEG1-Layer3 and converts the data into a file that can be used on computers. They provided music that has equivalent quality of existing CD.



- **What is “portable digital audio player”?**

It is a portable player that enables digital audio file to be saved and played that in the past were only be available on existing PC computers.



**Caution**

WMA files must be recorder at a bit rate of 32Kbps or higher to play on the device

## Product Specification

Division	ITEM	Specification
FM TUNER	Frequency range	87.5MHz ~ 108.0MHz
	Headphone output	(L)7 <sub>mW</sub> + (R)7 <sub>mW</sub> (16 Ω) Maximum volume
	S/N Ratio	50 dB
	Antenna	Headphone/earphone cord antenna
Audio	Frequency range	20Hz ~ 20KHz
	Headphone output	(L)7 <sub>mW</sub> + (R)7 <sub>mW</sub> (16 Ω) maximum volume
	S/N Ratio	90dB
File support	File type	MP3,WMA(No DRM), ADPCM
	Bit Rate	MP3:over 8Kbps, WMA:over 32Kbps
USB	Download speed	4Mbps(USB Version 1.1)
Recording time		Voice record 1,040minutes (256MB) Music record 240minutes (256MB)
Play time		Abt. 9hrs. with 1EA AAA
Operational temperature range		-5℃~70℃
Size (W × H × D)		36 × 81 × 16mm
Weight (except battery)		35g
LCD		Graphic LCD
Battery		Alkaline 1.5V AAA

## PC System Specification and Accessories

- PC Specification for the MP3 device.  
Microsoft OS (Windows 98, ME, 2000, XP)  
CD-ROM drive  
CPU with Pentium 200MHz or higher  
RAM 32MB ( 64MB for Windows ME or 2000 )  
Hard disk with 128MB or more of free space  
(When saving music files, additional capacity of hard disk is needed.)  
USB port

### ● MP3 FM Accessories

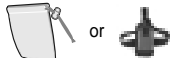
A. Program CD



D. Line-in Cable



H. Carrying case or Case with Armband (Optional Item)



B. Earphones



G. Neck Strap



I. AAA Battery



C. Manual



G. USB Cable

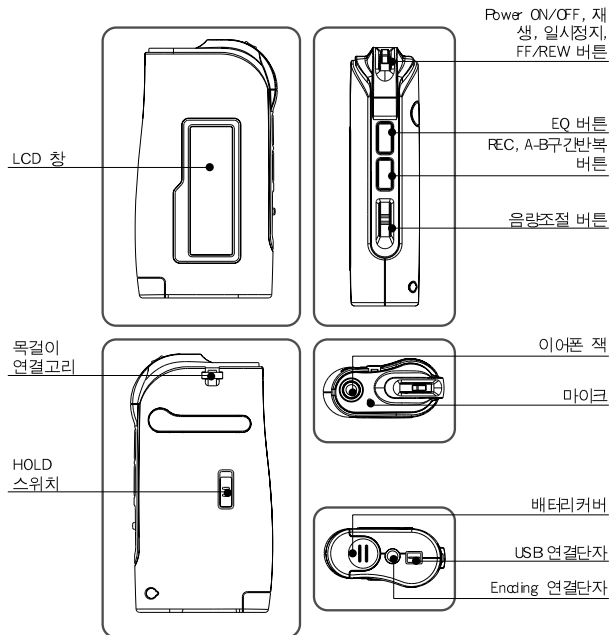


J. Remote Control (Optional Item)



- Please visit our web site(<http://www.mobiBLU.com>) to see the latest accessories as well as software and firmware.

## Hardware Overview



## Power Supply

Use 1 ×AAA size battery

❶. Open the battery cover by pushing in the direction of the arrow.

❷. Load the battery as indicated in the illustration, making sure that it is positioned correctly.(+ to +, and - to -)

❸. Replace the battery cover.

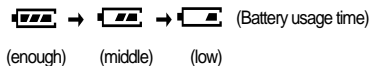
※1.5V AAA type 1EA battery.

※Please check carefully the polar points of the battery to prevent the Product damage.

## Power Supply

### ● Icons indicating the remaining capacity of the battery

❶ When initially operating, the icons of the remaining capacity may not readable.



❷ When using a general battery, the player could stop working, even though the battery capacity icon shows medium level, due to the peculiarity of the battery. (In this case, please change the battery into a new one.)

※ please change into a new battery as the following cases.

❶ When the icon blinks the signa; of 'EMPTY' .

❷ When the player stops working immediately after pushing any button.

❸ When the panel of the indicator doesn' t change with any button in the body on.

### ● Playing time of a battery

Batteries	Playing Time
Alkaline Battery	9 hours

#### 1. Use 1 ×AAA size battery

❶ open the battery cover by pushing in the direction of the arrow.

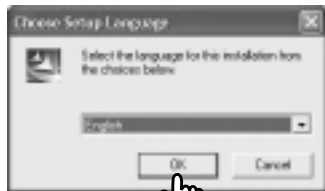
❷ Playing time may vary depending on usage conditions, manufacture company, or kind of batteries.

## Installation of mobiBLU Loader Plus

### Notice

In order for the player and your PC to communicate and transfer digital files, you must first install the mobiBLU Loader Plus by completing the following steps:  
1. Insert mobiBLU Loader Plus CD into CD-ROM drive. When CD is put in, Setup program is automatically executed and the screen below pops up.

2. Select language for installation and click Confirm. Then two windows below pop up and Setup starts.



- When Setup is started, follow the instruction of installation program.  
If the Setup program is not automatically executed, find and execute Setup.exe file in TCC folder of CD-ROM drive.

## Installation of mobiBLU Loader Plus

- If you click on a finger, the screen below pops up.  
(If you click on the arrow below in order, the installation is completed.)



- After completing the installation, 'mobiBLU Loader Plus' icon appears on Windows screen.



### Important Notice

- Windows Xp users please note** : You may receive a warning regarding Windows Driver certification, Click Yes or Next to continue the installation.
- If a rebooting message displays during setup, Reboot your PC to complete installation.



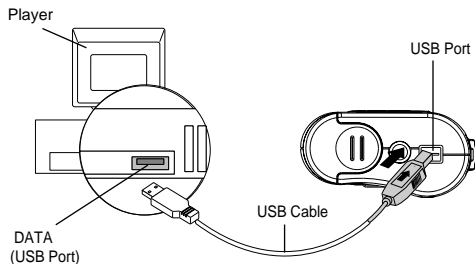
## How to connect MP3 with PC

### Reference

- ▶ When connecting the USB to the player, the power of the device is turned on.

- How to connect USB Cable.

See the graphic below for visual instruction on how to connect the MP3 to PC. If mobiBLU Loader Plus does not recognize the players memory when connecting disconnect the USB Cable from MP3 and then turn on the power and reconnect.



### Important Notice

1. When connecting the cable with MP3, please make sure the correct orientation of the connector end, and do not force the connector.
2. Do not disconnect the cable by force when MP3 is communicating with your Computer, like downloading, uploading, OS updating and formatting. This may cause serious damage to your computer or MP3.

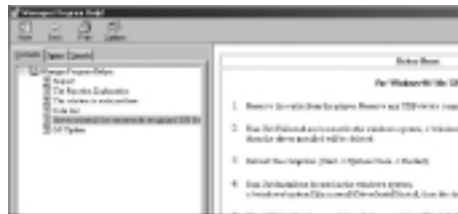
## When USB Port is not recognized

Please refer to “Manager Program Help” in the installed mobiBLU Loader Plus

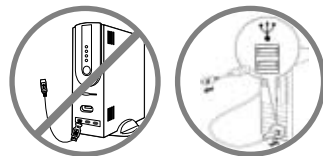
1. Open the Help site.



2. Click the article of “How to reinstall the erroneously recognized USB Drive”



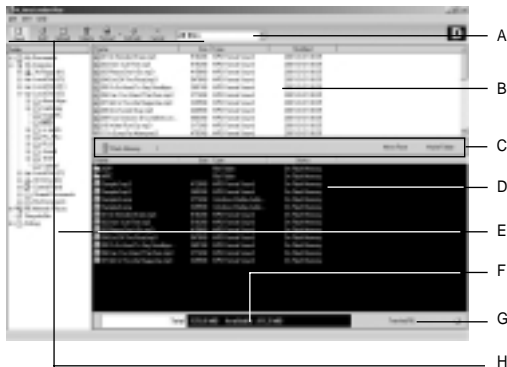
3. If you still have a problem with USB connection, please see “Trouble Shooting” in this manual.



### NOTE

Please connect the USB cable to a USB port on the back side of the PC case. If you connect the USB cable to a USB HUB or USB port on the front case, it may cause an instable connection with the device.

## How to use mobiBLU Loader Plus



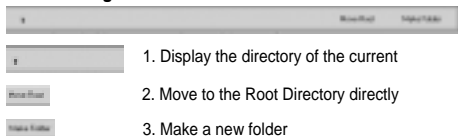
### A. File Selector

This enables you to view files by type.

### B. File List Window

This window displays the files contained in the selected folder enabling you to selectively download files to flash memory.

### C. Folder Manage Icons



\* To delete a folder, press "Delete" icon on the manager or "Del" key on the keyboard when the folder is selected.

### D. Memory Contents Window

This window enables you to check the file title, size, type and download status of the flash memory of the player.

## How to use mobiBLU Loader Plus

### E. Folder Window

This window enables you to select audio files more easily by allowing you to browse specific folders of your PC. The selected folder contents are displayed in the File List Window to the right.

### F. Memory Status

This indicates the amount of memory available, the amount of total memory and memory connection status. This window may indicate "No Memory Found" in cases Slim Sound FM is not connected properly.

### G. Transfer Files Button

This button begins transferring selected audio files to the player.

### H. Functional Icons



Flash Memory



Add : Adds the selected files to the selected memory. Selected files are placed in "Ready to Transfer" status in the memory contents window.



Upload : Uploads of the selected MPE or ADPCM files on the player memory to the selected PC folder



Delete : Deletes selected files on the selected memory



Format: Formats flash memory



Refresh : Refreshes view of selected memory



Cancel : Cancels file transfer between player and PC.

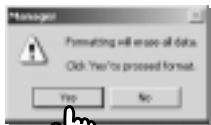
## How to format Memory

### ● Using the Format icon



**1** Open the mobiBLU Loader Plus and connect digital audio player to the PC .

**2** Select the format type you prefer a dialog box will appear to verify format selected.



**3** If you click on the 'YES' button format will begin, When formatting completes, a dialog box appear to let you know the format is complete.



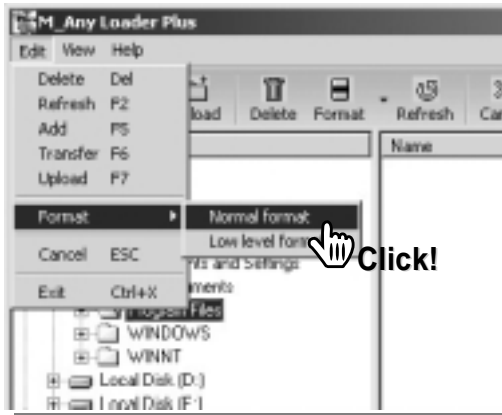
**4** Click the 'OK' button to complete the process.

### WARNING

Do not terminate the Format once it begins. If you remove USB Cable while it is being formatted, the player may be permanently damaged.

## How to format Memory

### ● When using the menu



### Normal format / Low level format

- Low Level Format : A "Low Level Format" is a longer procedure as it checks the disk sector by sector for any problems and repairs them if it finds them. This is somewhat similar to the 'Scandisk' program and requires that no other applications are opened during the formatting procedure.
- Normal Format :The "Normal Format" is, in essence, a quick 'clearing' of all the data on the memory card. It accomplishes the same thing as selecting all songs and deleting them.

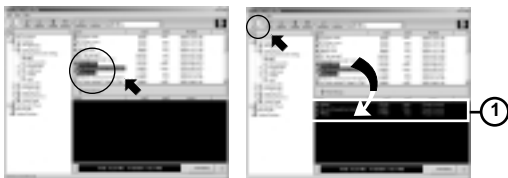
## How to download files

**1** Run mobiBLU Loader Plus and Connect MP3 to your computer.

---

**2** Highlight file/s to be downloaded in the File List Window using the Folder Window to browse for folders containing your audio files. You may select files one of 3 ways:

- You may drag & drop individual files from the File List window to the Memory Contents Window.
- You may select multiple audio files by holding down the CTRL key while clicking the left-mouse button on each file you wish to download to the player then drag and drop the selection of files as above.
- You may press the "F5" key or "Add" icon after highlighting each file.

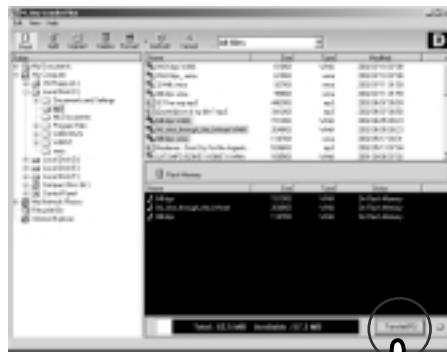


The selected files will appear in the Memory Contents Window with "Ready to transfer" listed under the status column.

---

## How to download files

**3** Click the "Transfer" button to start downloading selected files to the memory.



**4** To cancel a download in progress click the "Cancel" icon.

---

**5** Close the mobiBLU Loader Plus before disconnecting the USB

## How to upload files

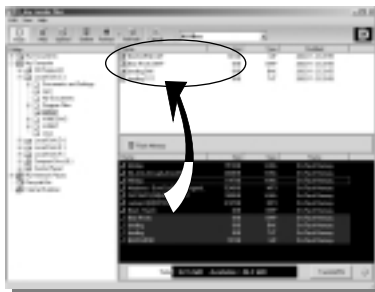
- If you want to move file from MP3 to the PC, follow the instruction below.

### Note

MP3/WMA file cannot be uploaded under related laws. (Other files such as MPE, ADPCM, ZIP, DOC, etc. can be uploaded.)

### How to upload file

- Select files in the Memory Contents Window that you want to upload, and click the 'Save it to PC/Upload' button, then the files are uploaded to the selected folder on your PC.

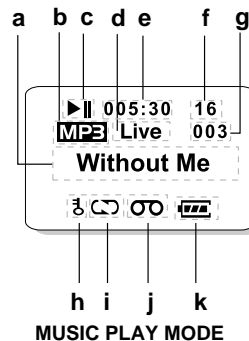


### Note

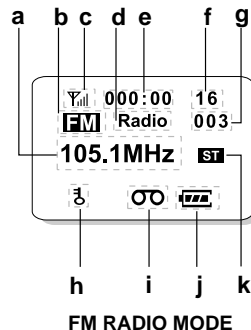
- You may drag & drop individual files from the Memory Contents Window to the File List window.
- You may select multiple audio files by holding down the CTRL key while clicking the left-mouse button on each file you wish to upload to the player then drag and drop the selection of files as above.

※ File cannot be played during communication with the PC.

## Explanation of LCD DISPLAY



- Song title
- Current file extension
- Current state (PLAY ►, PAUSE ||)
- Equalizer
- Play time
- Volume (0~30)
- TRACK Number
- HOLD
- (◁) Repeat the current song, (↺) Repeat all songs, (↻) Play all songs once in Random mode
- Voice and music recording
- Amount of battery



- Frequency
- FM icon, MP3 icon during recording
- The receiving frequency
- Radio, Preset (Autoset, Erase All) on Present MODE
- Recording time
- Volume (0~30)
- Preset Num: 1~10, (Others - '000')
- HOLD
- FM Radio recording
- Amount of battery
- Stereo On/Off

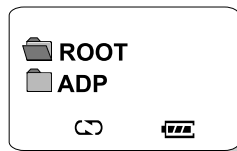
## Power On and Off & Auto power off

1. Power On : Press Play (▶) button for 2 seconds or until the LCD illuminates.

Play Music : Press Play(▶) button shortly to play music.



a. If there are music files in the Root Folder, it's ready to play the first music file(Stop Mode).



b. If there is no music file in the Root Folder, the initial Mode will be Folder Navigation Mode.

※ You can navigate sub directories and files with Vol+/- and FF/REW buttons.

2. Pause : Press Play button shortly while playing. It will be Pause mode.

3. Stop : Press Stop button shortly while playing. It will be Stop mode.

4. Power Off : Press Stop (■) button for 3 seconds or until the LCD shuts off.

\* Auto Power save mode : If the player senses it is not used for 5 minutes at Pause Mode, it will automatically go to Stop Mode.

\* Auto Power off mode : If the player senses it is not used for 5 minutes at Stop Mode, it will be automatically turned off.

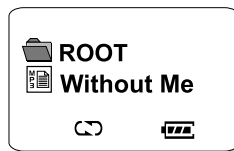
\* Resume Play function : When power is turned off normally as above, and the user turn it on again, last position of the music will be played.

## How to use Folder Navigation Mode

### ● Get in Folder/File Navigation Mode

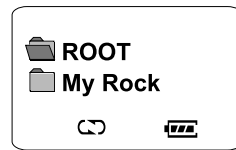
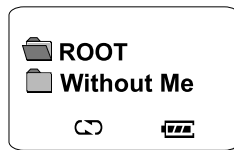
It's not available at Pause mode, FM Radio mode, and Recording mode. It's only available at STOP mode of Music Play.

1. Press Mode button shortly at STOP mode of MP3 Player. If there is a music file at the Root Folder, the file will be listed first.



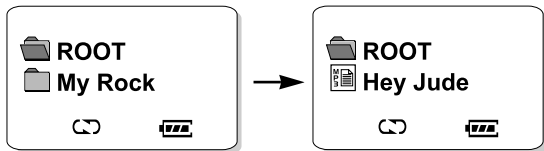
- ※ Files will be listed fist at the current folder.
- ※ If there are sub folders, they will be listed after the last file.
- ※ Press Play button to play the current music.

2. Navigate files and folders with Vol.+ / - button.



## How to use Folder Navigation Mode

3. Get into the selected sub folder with FF button.



- ※ If there are sub folders, they will be listed after the last file.
- ※ Press Play button to play the current music.

4. Move to upper folder with REW button.



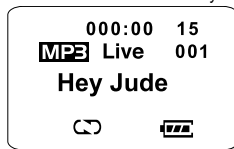
- ※ If there are sub folders, they will be listed after the last file.
- ※ Press Play button to play the current music.
- ※ If the current folder is ROOT, there is no response with REC button.

## How to use Folder Navigation Mode

### ● Move out from Folder Navigation Mode

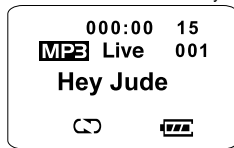
There are four ways to get out from this mode.

1. Press Mode button shortly during Navigation.



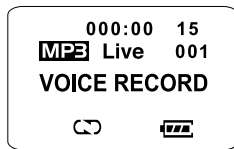
- ※ It moves to the Stop Mode of Music Play and ready to play the finally selected file in the folder.
- ※ Press Play button to play the current music.

2. Press STOP button shortly during Navigation.



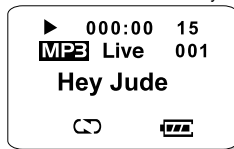
- ※ It moves to Root folder and exit the file/Folder mode.

3. Press REC button for 2 seconds during Navigation.



- ※ It moves to Voice Record Mode and ready to start Voice Record.
- ※ If you press REC button shortly, it starts Voice Recording.

4. Press PLAY button shortly during Navigation.



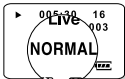
- ※ It moves to Music Play mode directly.

## Set up Repeat modes

### ● RANDOM / REPEAT MODE

Press the MODE button shortly while the file is playing.

**NORMAL** → **REPEAT** → **REPEAT-ALL** → **FOLDER-ALL** → **RANDOM** → **RANDOM-ALL**



Normal: Plays all songs in the folder in the order they are stored.



Repeat: Plays one selected song continuously.



Repeat All: Plays all songs in selected folder continuously.



Folder All: Plays all songs in all folders



Random: Plays all songs in selected folder once in a random order



Random All: Plays all songs in selected folder continuously in a random order.

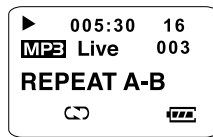
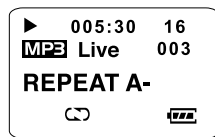
### Note

1. If currently playing file format is not \*.ADP file(Voice Recorded file), this mode will play all music files(\*.MP3/\*.MPE/\*.WMA)
2. If you press FF(Fast Forward) button in this Folder All mode, songs out of the current folder will be played in order from ROOT folder after the songs in the current folder.

## Set up Section Repeat modes

### ● REPEAT MODE(Repeat an interval of the current song)

1. Press the MODE button for 2 seconds while the file is playing.  
'REPEAT MODE' is displayed.
2. Press Mode button again shortly at desired beginning point.  
The message "Repeat A-" appears on the LCD display.
3. Press REC button again to mark the desired ending point.  
The message "Repeat A-B" appears on the LCD display.
4. File is repeated in the range between A and B.If position B is not specified, the player will default the ending position to the end of the file. If you press the STOP button, REPEAT MODE is canceled.





## Set up EQ Modes and Fast Searching

### ● EQ MODES

- There're 5-preset EQ modes and two user's EQ modes.(User 1 and User2)
- The mode will be changed by pressing play(▶)button for 2 seconds in play mode, in order, as follows;

**Live→Dance→Jazz→Latin→Rock→User 1→User 2**

- Each time you press PLAY button for 2 seconds the EQ settings will change in the order listed above. The option you stop at is the one that will be set on the player.



\*Sound quality may drop according to the song. The equalizer can be used to optimize the song quality .

### ● Fast Searching

1. If you press and hold the FF/REW button while in play mode, FF/REW Searching is done in 4 speed increments, the searching speed increases are 4x, 8x, 16x and 32x regular speed.(every five seconds respectively.)
2. During REW Searching, when beginning of the song is reached, Music plays from the start.
3. During FF Searching, when the end of a song is reached , the searching will begin from the initial part of next song.(Play for about 2 seconds from the beginning of the song.)

## Set up User's EQ(User1, User2)

### ● USER1 MODE, USER2 MODE

#### 1. Begin in Play MODE

USER EQ MODE is available only while music is playing.

- Press "MODE" button for 2 seconds in.  
(Repeat MODE appear on the display)
- Press "MODE" button again for 2 seconds.  
("USER1" MODE appears on the display)
- Press "MODE" button again for 2 seconds.  
(USER2 MODE appears on the display)

#### 2. USER EQ SETTING MODE

- Press "MODE" button once quickly while "USER1" or "USER2" is displayed. (doing so will allow you to personalize your EQ settings) (5 Bar will be display on LCD)

#### 3. Change EQ setting (USER1 EQ, USER2 EQ)

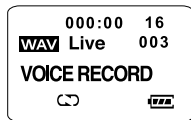
- Change EQ setting is only available when bars are displayed on LCD.
- First Bar will blink indicating edit mode.
- Change EQ Bar with FF/REW button.(move between 5 Bars)
- Change Value with Vol +/- button. (value of each bar)  
(-15~-15 : 31 levels)

#### 4. Quit User EQ mode

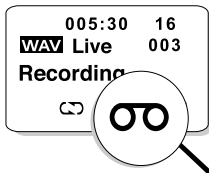
- Press "STOP" button shortly to quit EQ mode.

## How to Record Voice

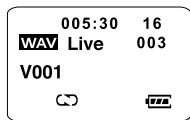
1. Voice record function is only available while Player is in STOP MODE.
2. Press the REC button for 2 seconds, VOICE RECORD is displayed.



3. Press the REC button shortly, voice recording is initiated. (REC icon is turned on in the lower part of LCD screen, and Recording... is displayed.)



4. To terminate recording, press the STOP button.
  - ※ ADP : Voice Recorded files ( V \*\*\*. ADP ) are saved in this folder automatically. ( If there's no ADP folder at the starting Voice Recording, ADP folder will be created in root folder. )
5. To play the recorded file, press the PLAY button. The recorded file is displayed as V001, V002, V003,.....

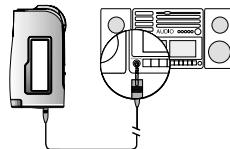


### Note

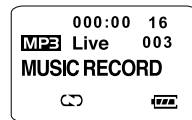
If flash Memory is full, it will flash two times and then, the Recording will end automatically. (If battery dies during recording, the recorded file is automatically saved and power is shut down.)

## How to Record Music

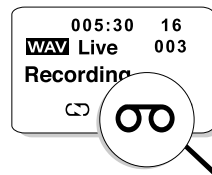
1. Insert one end of Encoding Cable into the earphone terminal of an ordinary audio device (ie: CD Player, Cassette deck, Radio) and the other end into IN PUT AUDIO terminal of the MP3.



2. Begin in STOP mode, Press the REC button for 2 seconds, VOICE RECORD is displayed, Press the REC button once more for 2 seconds, Music Record is displayed.



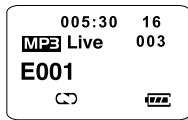
3. Press REC button again shortly, music recording begins. (Recording icon is turned on in the lower part of LCD screen, and "Recording..." is displayed.)



※ You can listen to the file through earphone while recording. (loop back)

## How to Record Music

- To terminate recording, press the STOP button
- To play the recorded file, press the PLAY button. The recorded file is displayed as E001, E002, E003,...



※ MPE : Music Recorded files ( E \*\*\*. MPE ) are saved in this folder automatically. ( If there's no MPE folder at the starting Music Recording, MPE folder will be created in root folder. )

※ NOTE: If flash Memory is full, it will flash two times and the Recording will end automatically. (If battery dies during recording, the recorded file is automatically saved and power is shut down.)



### What is loop back?

Function that enables you to verify/listen to recording that is currently being executed through earphones with a little noise, (During loop back, you may hear some interference but the actual file will not have the same problem.)

## Listening to Voice recorded files or Music files

- There are two types of file formats.

a. Music Files

**MP3** : \*.MP3 / \*.MPE

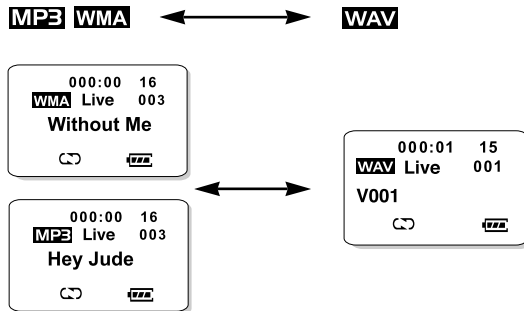
**WMA** : \*.WMA

b. Voice Recorded Files

**WAV** : \*.ADP

- How to change the type of playing format

Press PLAY button for a while in each STOP mode.

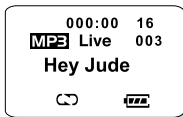


## How to Erase files

1. Erase MODE can only be used while in STOP mode
2. Begin in STOP mode, Press the REC button for 2 seconds, VOICE RECORD is displayed, Press the REC button for a second time for 2 seconds, Music Record is displayed. Press the REC button for a third time for 2 seconds, Erase Mode is displayed.

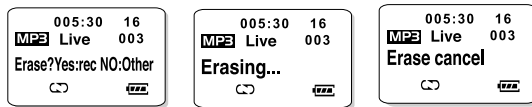


3. Press REC button again shortly, Erase Mode is initiated.



4. Locate the file you want to erase with FF/REW button, Once the file is located, press the REC button shortly. "Erase? Yes:rec NO:Other" is displayed.

- To erase, press the REC button shortly, Erasing.." is displayed and the file is erased.
- To cancel erasing, press any other button except REC shortly, then, Erase Cancel" is displayed and erasing is terminated.

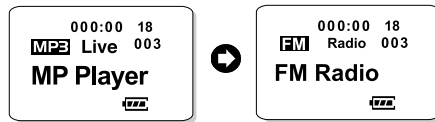


### Erase function?

This function enables you to remove files from the player without connecting it to the PC/ mobiBLU Loader Plus.

## How to use FM RADIO

1. RADIO MODE can only be initiated in STOP mode.
2. Begin in STOP mode, Press the MODE button for 2 seconds, FM Radio is displayed ( FM Radio" is displayed for about 3 seconds, and then received current frequency is displayed.)



### Note

When you turn on the MP3, you begin in MP Player MODE. Then, press MODE button for 2 seconds to change the mode. (MP Player MODE, FM RADIO MODE)

3. FM icon is displayed in the upper left part of LCD. Radio icon is displayed in the right-upper part of LCD.
4. Preset Number is displayed where Track Number of MP Player MODE is normally shown. Preset Number is the number of the saved frequency. A total of 10 frequencies can be saved. (Preset Number 1 ~ 10)

### Note

Each radio station uses different frequencies.  
The range of frequency modulation differs from nation to nation.

## How to use FM RADIO

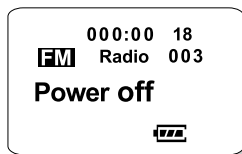
### ● Listening to the radio FM RADIO MODE (Frequency 87.5MHz~108.0MHz)

1. After entering RADIO MODE, press the PLAY button shortly to listen to the FM radio.(RADIO MODE )
  - Antenna icon is displayed above FM icon.
  - According to the rate of received frequency, the level is indicated with a bar.



### ● To stop listening to the radio.

1. While Radio is playing, press the STOP button shortly.  
The antenna icon is turned off. The frequency that you were listen to is automatically saved.
  - If STOP button is pressed for 3 seconds,Power is shut down.
  - After 5 minutes in Stop mode, it will be turned off automatically.



## Searching FM frequency

### ● Searching frequency manually

1. Press the FF/REW button shortly to search frequency.  
(Frequency is increased or decreased by 0.05MHz.)
2. Searching is possible in both STOP and PLAY MODE.

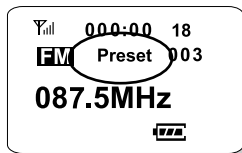
### ● Searching frequency automatically

- : Searching frequency is possible in STOP/ PLAY/ Preset/ Auto Set MODE.
1. Press the FF/REW button for 2 seconds, searching frequency is automatically started.
  2. When search reaches a high receiving rate, it is automatically stopped.
  3. You can listen to radio when the searching is stopped.
  4. Auto Search by pressing FF/REW button in Stop mode will go to FM Radio play mode when the first Channel is searched.

## Saving the frequency(Preset Mode)

### ● Saving frequency with Preset MODE

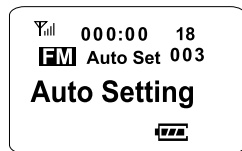
1. While the Radio is playing Press the MODE button for 2 seconds, Preset MODE is started. (Preset icon is displayed where Radio icon was shown.)
2. If you press MODE button shortly at Preset MODE, the current frequency is saved in the Preset Number that is displayed on LCD screen. (The frequency that was displayed in the middle of LCD screen flashes twice.)
3. Change the Preset Number by pressing FF/REW button briefly while in Preset MODE. (Preset Number is displayed just below the Volume )
4. You can search frequency while in Preset MODE.
  - Search frequency by pressing FF/REW button for a while.



## Saving the frequency(Preset Mode)

### ● Saving frequency at Auto Set MODE(saving various frequency at once)

1. If you press MODE button for 2 seconds at Preset MODE, Auto Set MODE is started. (Auto Set icon is displayed where Preset icon used to be.)
2. If you press MODE button at Auto Set MODE briefly, "Auto setting" is displayed for 1 sec in the middle of LCD screen, and 10 frequency (001~010) is automatically saved.



3. When frequency with a high receiving rate is received, Preset Number is automatically increased and the frequency is saved. (You can select Preset Number and frequency by using FF/REW button before searching at Auto Set MODE)
4. Once all 10 frequency is saved, Preset Number is changed to '001' and receive the frequency that is saved.
5. If you press STOP button while executing auto search, the searching is stopped.
  - Only STOP button is recognized while auto searching.

### Note

At Preset MODE or Auto Set MODE, press STOP button to get out of MODE. But, while auto searching, only searching function is stopped.

## Erasing saved frequency

### ● Erasing Preset frequency (erasing all 10 at one time)

1. If you press MODE button for 2 seconds at Auto Set MODE, All Erase icon is displayed where Auto Set icon used to be. Then, All Erase MODE is started.
2. If you press MODE button shortly at All Erase MODE, "Preset clear" is displayed and all the saved frequency is erased. All frequency belong to Preset number is initialized at 87.5MHz.

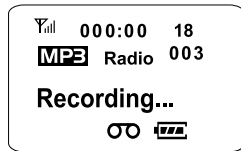


## How to Record FM Radio

1. While Radio is playing, press the REC button for 2 seconds "RADIO RECORD" is displayed.( REC stand-by )



2. Press REC the button briefly once more in RADIO RECORD MODE, the recording will begin. While recording, REC icon is displayed in the lower part of LCD screen, and "Recording..." is shown in the middle of the screen. Format icon that is identical to recording file ( **MP3** ) is displayed where FM icon used to be.



## How to Record FM Radio

- To terminate the recording press the STOP or REC button briefly the recording is stopped. REC Stop\* is displayed for 1 sec and then file name is displayed for 1 second. (E001, E002, E003...)
  - File name: The name of the file can be changed after uploading to the PC by using the mobiBLU Loader Plus.
- If you press the STOP button for longer than 3 seconds while recording, the power is shut down, and the file being recorded is automatically saved.
  - While recording, FF/REW, MODE buttons are disabled. You can listen to radio through earphone. (Loop back)



## Return to Music Play Mode

- Press the STOP button shortly while Radio is playing
  - this will stop the Radio from playing.
- Press the MODE button for 2 seconds, This will take you to MP Player Mode.



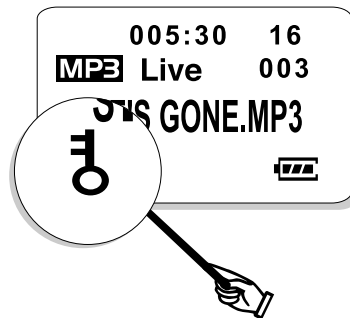
## Set up HOLD (Lock key)

### 1. How to lock the buttons

- Move the slide key When you lock/Hold the player, it disables the function of the buttons.
- The Key icon appears on the LCD display to indicate the buttons are locked.

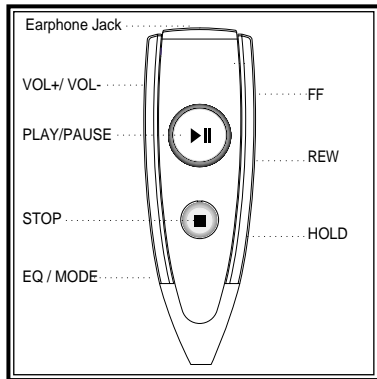
### 2. To end the HOLD function

- Move switch back to unlock the buttons.
- The Key icon will disappear from your display indicating that your buttons are functioning again.





## Remote Control Manual



1. This Remote Controller has 7 buttons and one slide "hold" switch.  
(PLAY/STOP/Vol+/Vol-/FF/REW/EQ/HOLD)
2. Every button with the exception to the EQ/MODE button works exactly the same as on the MP3.
3. How to use the EQ/MODE button on the Remote
  - a. REPEAT MODE
    - Please press EQ/MODE button while the song is playing.  
(Repeat A is displayed.)
    - Then press the EQ/MODE button again while song is playing.  
(Repeat B is displayed).The song will play continuously between A and B.  
Press Stop button to cancel the Repeat MODE.

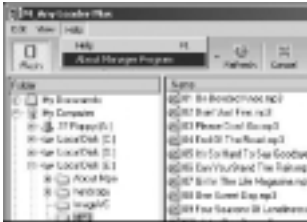
## Remote Control Manual

- b. User EQ Settings.
    - Press the EQ/MODE button for 2 seconds to change EQ while a song is playing. (Icon will be displayed on set's LCD on setting EQ.)
  - c. How to switch between MP3 Player and Radio mode
    - Press EQ/MODE button for 2 seconds on stop mode, the mode will (MP PLAYER MODE ↔ RADIO MODE)
  - d. PLAY MODE Settings.
    - Being in STOP mode, press the EQ/MODE button, the mode will be changed between Repeat and Random mode.  
(Icon will be displayed on LCD on setting.)
4. How to use the HOLD Settings (Icon will be displayed on LCD)
    - a. Move the Slide Switch to the HOLD position
    - b. HOLD disables the function of the buttons on the Remote and the MP3 device.

## How to check the O/S and Manager version

- You need to visit our website(<http://www.mobiBLU.com>) from time to time to see if a new version of mobiBLU Loader Plus or a new version of MP3 Firmware(OS) for upgraded functions.

1. Run the manager of mobiBLU Loader Plus.
2. Connect MP3 to your PC with USB cable.
3. Select "Help" => "About Manager Program" and Click it



4. You can see the version of OS and Manager.



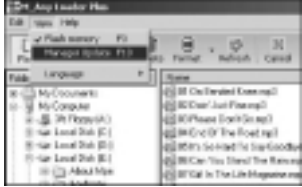
If the MP3 is not recognized(connected) to your PC, the O/S version will not displayed.In that case, please refer to "Manager Program Help" in the installed mobiBLU Loader Plus.

- a. Run "mobiBLU Loader Plus" and
- b. Go to "Help" and select "How to reinstall the erroneously recognized USB Drive"

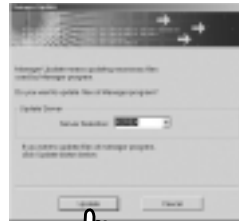


44

## How to upgrade mobiBLU Loader Plus

1. How to Install the manager newly ;
  - a. You should download the latest version of manager, named as mobiBLU Loader Plus" from our website.
  - b. Delete the currently installed mobiBLU Loader Plus first by "Program add & delete".
  - c. Install the manager with the instruction on the process.
2. How to use the Manager Update ;
  - a. Run mobiBLU Loader Plus.
  - b. Connect MP3 to your PC with USB cable.
  - c. Check if your PC is on-line (connected with internet service)
  - d.  Click it.

- e. Click "Update" and complete the process.



 **Click!**

- f. Before the Manager Update, If the version is lower than 1.0.0.8, please run the update once again.

45

## How to upgrade Firmware(O/S)

- Please visit our website(<http://www.mobiBLU.com>) to see if a new O/S is released. You can check it with name of the patch file and its released date. The file name should be "MP3 OS\_xxxxx.zip". "xxxxx" will be OS version number.
  1. Download the patch file(O/S installation file).
  2. After uncompress zip file, MP3\_xxxxxB.exe and MP3\_xxxxxM file will be shown up.
  3. Connect MP3 to your PC with USB cable.
  4. Excute MP3\_xxxxxB.exe first.

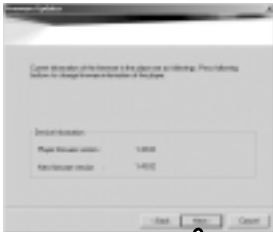


 **Click!**



 **Click!**

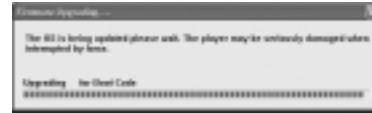
5. You can see the OS version information and click the Next.



 **Click!**

## How to upgrade Firmware(O/S)

6. Please do not unplug the connected USB cable. This may cause a serious problem.



7. Press "Finish" button to complete firmware update.



 **Click!**

8. Execute MP3\_xxxxxM.exe and go through 4-7 process again.

## Troubleshooting Problems

If you encounter any of the problems listed below, follow the suggested solutions.

1. MP3 will not download digital files from the PC.
  - Check the cable connection to the USB port.
2. MP3 will not play.
  - Verify that the battery has been inserted correctly.
  - Check battery discharge status.
3. The mobiBLU Loader Plus does NOT recognize the hardware connection.
  - Check the cable connection to the USB port.
  - You may need to re-install the software. If "No memory found" is shown again;
  - Connect the USB cable to another USB port.
  - Check if there is " TCC730\_USB " in My computer Control Panel System Device Manager.
4. If there is "! (or?) USB Driver" or "! (or?) Untitled Device", USB driver was not installed correctly or is not properly recognized. In this case it is necessary to re-install the USB driver.
  - To install the USB drivers, please refer to the Help file of the program.
  - If there are no contents related to USB in My computer Control Panel System Device Manager, you may have to check if your computer is compatible with USB driver.

## Troubleshooting Problems

- Check if there is a conflict with the hardware in the My computer Control panel System Device Manager.  
(Hardware conflicted with other hardware shows "!" or "?" mark in front of the device name.)
  - If you find a conflict between hardware, delete the conflicted hardware and reboot computer.
  - Please visit the Hyun Won Inc, website at [www.mobiBLU.com](http://www.mobiBLU.com) for the latest updates and software upgrades for the MP3
5. Installing the USB Driver manually
    - Insert Software CD into CD-ROM Drive (Do not execute the installation program.)  
Connect the MP3 Player to PC with USB cable.  
(If there is no USB driver to communicate between the MP3 and the PC, the "New Hardware Wizard" will appear on the screen.)
    - Proceed the installation following the on-screen instructions.
    - When the location of the drive is asked, select the folder of your CD ROM.  
(When the installation finishes, The New Hardware Wizard will appear on screen again.)
    - Follow the on-screen instructions to complete the installation of the USB driver.

### Important Note

Please refer to "Help" of mobiBLU Loader Plus manager to see more specific Solution.

## WARRANTY SERVICE

Customers are entitled to warranty service for a period of one year from the date of purchase. Warranty service does not apply to defects resulting from customer fault or acts of God.

Non-warranty service shall apply to defects resulting from:

1. Infiltration of foreign matter, such as water, liquid, or sand.
2. Breakage due to dropping or severe impact.
3. Damage to or deformation of the outer case caused by organic solvents, such as benzene.
4. Use of parts other than those certified by the manufacturer.
5. Loss or breakage of any parts or components caused by unauthorized disassembly.
6. Repair or modification done by any persons other than manufacturer authorized personnel.
7. Acts of God, such as lightning, storm or flood.
8. Purchase from unauthorized retailers.

For more warranty information and service options, please visit the Hyun won inc. web site at <http://www.mobiBLU.com>

## FCC RF INTERFERENCE STATEMENT

### Note

This equipment has been tested and found to comply with the limits for a Class B digital device, pursuant to Part 15 of the FCC Rules. These limits are designed to provide reasonable protection against harmful interference in a residential installation.

This equipment generates, uses and can radiate radio frequency energy and, if not installed and used in accordance with the instructions, may cause harmful interference to radio communications. However, there is no guarantee that interference will not occur in a particular installation.

If this equipment does cause harmful interference to radio or television reception which can be determined by turning the equipment off and on, the user is encouraged to try to correct the interference by one or more of the following measures.

- Reorient or relocate the receiving antenna.
- Increase the separation between the equipment and receiver.
- Connect the equipment into an outlet on a circuit different from that to which the receiver is connected.
- Consult the dealer or an experienced radio, TV technical for help.
- Only shielded interface cable should be used.

Finally, any changes or modifications to the equipment by the user not expressly approved by the grantee or manufacturer could void the users authority to operate such equipment.

### CAUTION

Changes or modifications not expressly approved by the party responsible for compliance could void the user's authority to operate the equipment.

THIS DEVICE COMPLIES WITH PART 15 OF THE FCC RULES. OPERATION IS SUBJECT TO THE FOLLOWING TWO CONDITIONS: (1) THIS DEVICE MAY NOT CAUSE HARMFUL INTERFERENCE, AND (2) THIS DEVICE MUST ACCEPT ANY INTERFERENCE RECEIVED INCLUDING INTERFERENCE THAT MAY CAUSE UNDESIRE OPERATION.