

ATTACHMENT E. USERS MANUAL

U.S.A.

**U.S.FEDERAL COMMUNICATIONS COMMISSION
RADIO FREQUENCY INTERFERENCE STATEMENT
INFORMATION TO THE USER**

NOTE : This equipment has been tested and found to comply with the limits for a Class B digital device pursuant to Part 15 of the FCC Rules.

These limits are designed to provide reasonable protection against harmful interference in a residential installation.

This equipment generates, uses, and can radiate radio frequency energy and, if not installed and used in accordance with the instructions, may cause harmful interference to radio communications.

However, there is no guarantee that interference will not occur in a particular installation.

If this equipment does cause harmful interference to radio or television reception, which can be determined by turning the equipment off and on, the user is encouraged to try to correct the interference by one or more of the following measures:

- Reorient or relocate the receiving antenna.
- Increase the separation between the equipment and receiver.
- Connect the equipment into an outlet of a circuit different from that to which the receiver is connected.
- Consult the dealer or an experienced radio/TV technician for assistance.

Changes or modification not expressly approved by the party responsible for compliance could void the user's authority to operate the equipment.
Connecting of peripherals requires the use of grounded shielded signal cables.

DECLARATION OF CONFORMITY

WE
HYUNDAI ELECTRONICS INDUSTRIES CO., LTD.
Ami-ri Bubal-Eub Ichon-Si Kyungki-Do
467-860 KOREA

declare under our sole responsibility that the product:

Kind of equipment : COLOR MONITOR

Type-Designation : A725

to which this declaration relates is in conformity with the following standard(s) or other normative document(s)

Safety : EN60950 : 1992 + A1, A2, A3, A4
EMC : EN 55 022/1994, EN 50 082-1/1992
IEC 801-2/1991, IEC 801-3/1984, IEC 801-4/1988

following the provisions of the Low Voltage Directive 73/23/EEC,
93/68/EEC and the EMC Directive 89/336/EEC.

Accredited testlaboratory:
TÜV Rheinland
Am Grauen Stein
51105 Köln

KOREA / JAN. 08, 2000
(Place and date of issue)

HONG KI KIM *Hong Ki Kim*
(Name and signature of authorized person)

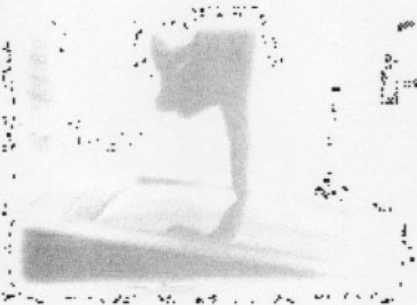
A725 Multiscanning Color Monitor

BACK

NEXT

Contents

1. Introduction	1/19
2. Safety Information	1/19
3. Installing the monitor	3/19
3-1. Packing List	3/19
3-2. Fastening the swivel and tilt base ...	4/19
3-3. Selecting a suitable location.....	4/19
3-4. Connecting the monitor.....	5/19
3-5. Installing the driver.....	7/19
3-5-1. Windows 95/98/2000.....	7/19
3-5-2. Other operating systems.....	8/19
3-6. Setting the refresh rate.....	8/19
Preset Timing Table.....	8/19
4. Adjusting the picture.....	9/19
4-1. Using the On Screen Display.....	10/19
4-2. Direct access buttons.....	10/19
4-3. OSD Adjustments.....	11/19
5. Display power management.....	15/19
Reducing power consumption.....	15/19
6. Troubleshooting.....	16/19
7. Specifications.....	19/19



A725 Multiscanning Color Monitor

BACK

NEXT

1. Introduction

This manual contains instructions for installing and operating Hyundai DeluxScan A725. Hyundai DeluxScan A725 is a highly ergonomic color display unit.

- 17" diagonal (15.7" viewable) 0.27mm dot pitch CDT
- Supporting high screen refresh rates and full scan flicker-free picture quality
- With On Screen Display menus for user control
- 100-240V AC input voltage
- VESA DPM5 (Display Power Management Signaling)
- VESA DDC1/2B compatibility

2. Safety Information

When you set up and use your display unit, follow the safety instructions below.

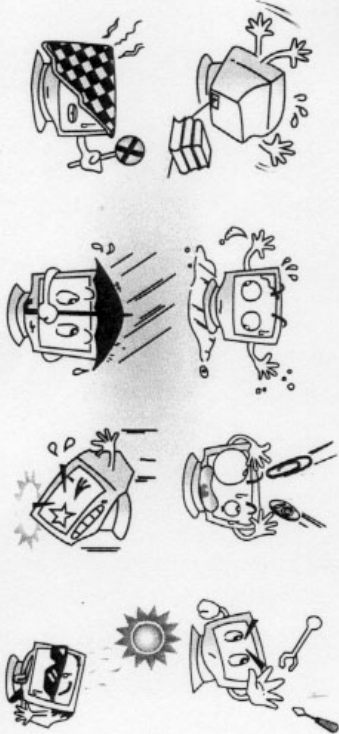
- Do not use the display unit in humid environments like bathrooms, damp cellars, swimming pools, etc.
- This equipment must be connected to an earthed outlet which is close to the display unit and accessible in case you need to disconnect the display.
- Do not connect an extension cord.
- Never insert objects into the openings on the outside of the device as you can come into contact with live electrical components. This can cause fire or give strong electrical shocks.
- Slots in the cabinet are provided for ventilation. Do not block the ventilation slots in the display unit cabinet.
- Do not under any circumstances open the display unit cabinet.

Cleaning and Maintenance

A725 Multiscanning Color Monitor

[BACK](#)[NEXT](#)

- To avoid risk of electric shock, do not disassemble the display unit cabinet. The unit is not user-serviceable. Remember to unplug the display unit from the power outlet before cleaning.
- Do not use alcohol (methyl, ethyl or isopropyl) or any strong dissolvent. Do not use thinner or benzene, abrasive cleaners or compressed air.
- Do not wipe the screen with a cloth or sponge that could scratch the surface.
- To clean your antistatic screen, use water and a special microfiber screen cleaning tissue used in optical lens cleaning, or lightly dampen a soft, clean cloth with water or a mild detergent.
- To clean display unit cabinet, use a cloth lightly dampened with a mild detergent.
- During the transportation of the monitor, the swivel base has to be removed in every case.

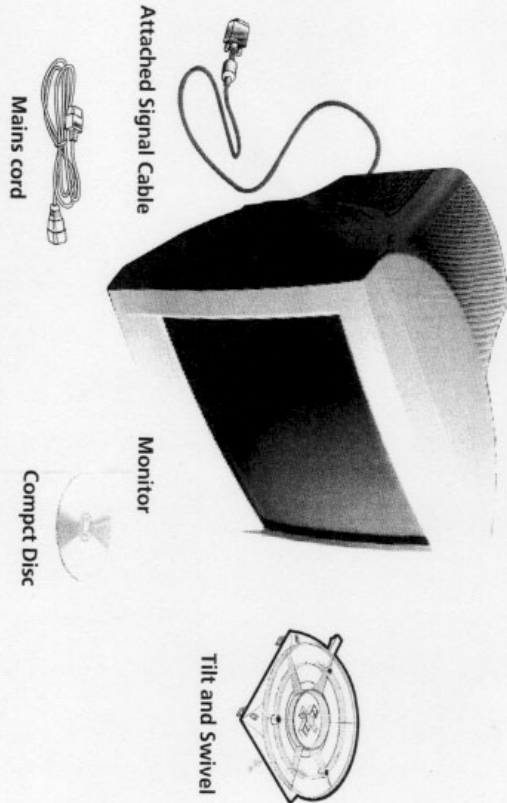


3. Installing the monitor
3-1. Packing List

A725
Multiscanning Color Monitor

BACK
NEXT

The following items should be found in the packaging.



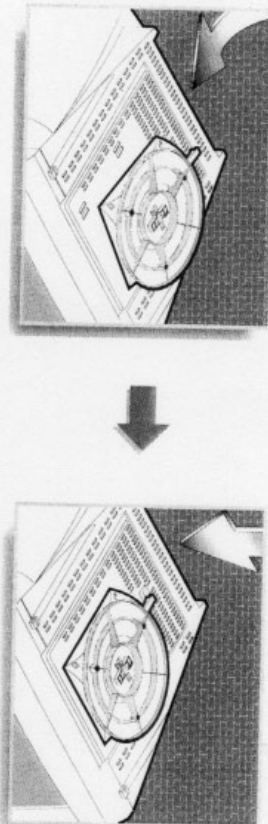
i Above power cord can be changed upon different voltage areas. Please contact your dealer if anything is missing or damaged.

A725 Multiscanning Color Monitor

BACK

NEXT

3-2. Fastening the swivel and tilt base



- Place the base against the bottom of the monitor so that the base fasteners are aligned with appropriate slots.
- Push the base towards the front of the monitor until the latch locks into position.

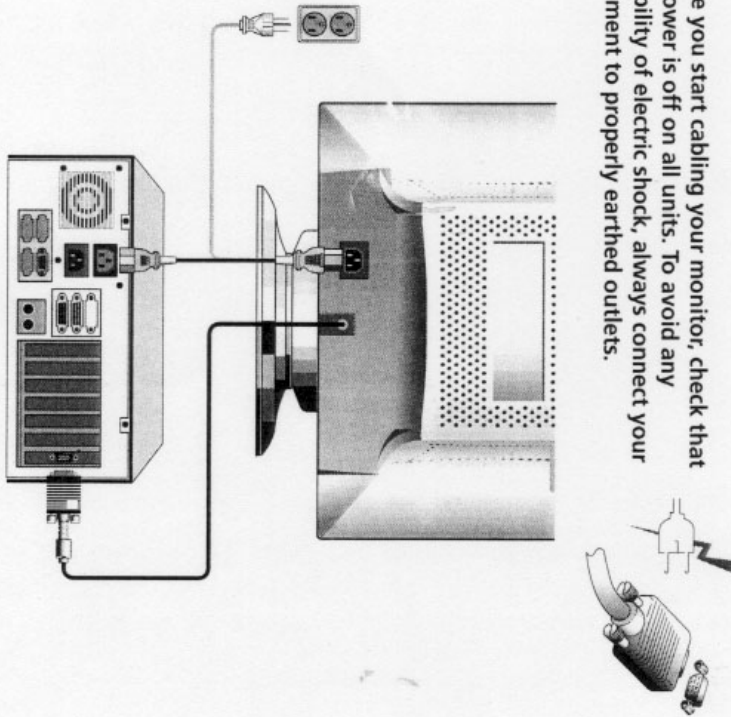
3-3. Selecting a suitable location

- Place the monitor at least 30cm from other electrical or heat-emitting equipment and allow at least 10cm on each side for ventilation.
- Place the monitor in a position where no light shines directly onto or is reflected on the screen.
- To reduce eye strain, avoid installing the display unit against a bright background such as a window.
- Position the monitor so that the top of the screen is no higher than eye level.
- Position the monitor directly in front of you at a comfortable reading distance (around 45 to 90cm)

3-4. Connecting the monitor

**A725
Multiscanning Color Monitor**

I Before you start cabling your monitor, check that the power is off on all units. To avoid any possibility of electric shock, always connect your equipment to properly earthed outlets.



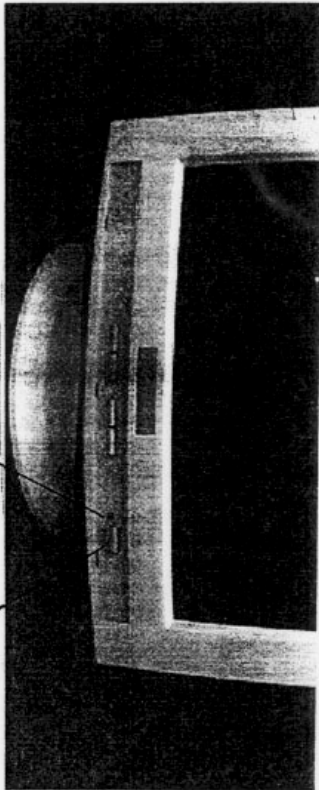
BACK
NEXT

A7225 Multiscanning Color Monitor

BACK

NEXT

1. Insert the 15-pin signal cable connector to the VGA connection on your computer and screw it down.
2. Plug the display unit's power cable first to the back of the display unit.
3. Then plug the power cable to a 100V - 240V earthed electrical outlet or to the system unit, if it has an outlet for the display power cable.
4. Turn on the display unit using the Soft power switch and check that the power LED is on. If not, repeat steps 3, 4 and 5 or refer to the Troubleshooting section of this guide.



Power LED Soft Power Switch

5. Turn on the power to the computer. The picture will appear within about 15 seconds. Adjust the picture to obtain optimum picture quality. See the section *Adjusting the picture* in this guide for more information.

3-5. Installing the driver

3-5-1. Windows 95/98/2000

A725 Multiscanning Color Monitor

BACK

NEXT

This monitor complies with Microsoft Windows Plug and Play standard.
The monitor will be detected automatically when starting Windows 95/98 or 2000.

1. Switch on the monitor.
2. Start Windows. New hardware will be found (Plug and Play monitor) and the 'Add New Hardware Wizard' will start up.

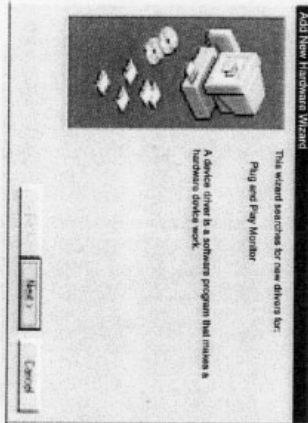


Figure : Installing the driver

3. Click on 'Next' to continue.
4. Follow the on-screen instructions for installing the proper driver. Windows will locate the driver for the Plug and Play monitor.
5. Follow the on-screen instructions for installing the proper driver.
6. Select 'Hyundai DeluxScan V770' and click on 'Next' to continue.
7. Follow on-screen instructions to complete the installation.

The computer does not need to be restarted following installation.