

Type No. L15A0C062

NEXT




ImageQuest

ImageQuest L550S

TFT LCD Color Monitor



User's Guide

▼ Click

 **HYUNDAI**

www.imageQuest.co.kr

U.S.A.

U.S.FEDERAL COMMUNICATIONS COMMISSION RADIO FREQUENCY INTERFERENCE STATEMENT INFORMATION TO THE USER

NOTE : This equipment has been tested and found to comply with the limits for a Class B digital device pursuant to Part 15 of the FCC Rules.

These limits are designed to provide reasonable protection against harmful interference in a residential installation.

This equipment generates, uses, and can radiate radio frequency energy and, if not installed and used in accordance with the instructions, may cause harmful interference to radio communications.

However, there is no guarantee that interference will not occur in a particular installation.

If this equipment does cause harmful interference to radio or television reception, which can be determined by turning the equipment off and on, the user is encouraged to try to correct the interference by one or more of the following measures:

- Reorient or relocate the receiving antenna.
- Increase the separation between the equipment and receiver.
- Connect the equipment into an outlet of a circuit different from that to which the receiver is connected.
- Consult the dealer or an experienced radio/TV technician for assistance.

Changes or modification not expressly approved by the party responsible for compliance could void the user's authority to operate the equipment.

Connecting of peripherals requires the use of grounded shielded signal cables.

DECLARATION OF CONFORMITY

WE **ImageQuest CO., LTD.**
Ami-ri Bubal-Eub Ichon-Si Kyungki-Do
467-860 KOREA

declare under our sole responsibility that the product:

Kind of equipment : COLOR MONITOR

Type-Designation : L15A0C062

to which this declaration relates is in conformity with the following standard(s) or other normative document(s)

Safety : EN 60950 : 1992 + A1, A2, A3, A4
EMC : EN 55022 : 1998, EN 55024 : 1998
: EN 61000-3-2 : 1995+A1 : 1998+A2 : 1998
: EN 61000-3-3 : 1995

following the provisions of the Low Voltage Directive 73/23/EEC, 93/68/EEC and the EMC Directive 89/336/EEC.

Accredited testlaboratory:
TÜV Rheinland
Am Grauen Stein
51105 Köln

KOREA / June 20, 2001
(Place and date of issue)

HONG KI, KIM
(Name and signature of authorized person)

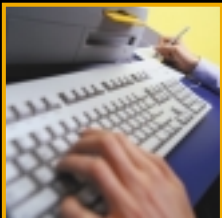


Contents

1. Introduction	1/17
2. Safety Information	1/17
3. Installing the monitor	4/17
3-1. Packing List	4/17
3-2. Selecting a suitable location	5/17
3-3. Connecting the monitor	5/17
3-4. Setting the refresh rate	7/17
Preset Timing Table	8/17



4. Adjusting the picture	9/17
4-1. Using the On Screen Display	10/17
4-2. Direct access buttons	10/17
4-3. OSD Adjustments	11/17
5. Display power management ..	13/17
Reducing power consumption	13/17
6. Troubleshooting	14/17
7. Specifications	17/17



1. Introduction

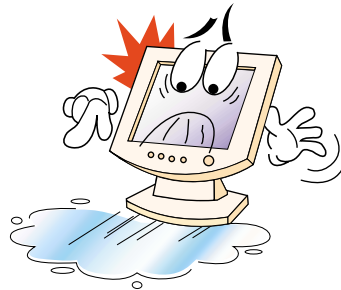
This manual contains instructions for installing and operating ImageQuest L550S.

ImageQuest L550S is a highly ergonomic color display unit.

- 15" viewable XGA LCD
- Supporting full scan flicker-free picture quality
- With On Screen Display menus for user control
- 100-240V AC input voltage
- VESA DPMS (Display Power Management Signalling)
- VESA DDC1/2B compatibility

2. Safety Information

This Monitor has been engineered and manufactured to assure your safety. You can prevent serious electrical shock and other hazards by keeping in mind the following:



Do not place anything wet on the monitor or the power cord. Never cover the ventilation openings with any material and never touch them with metallic or inflammable materials.

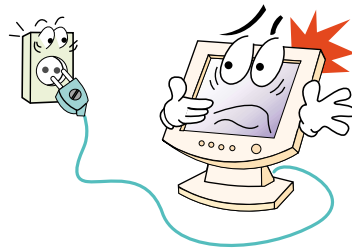
Avoid operating the monitor in extreme heat, humidity or areas affected by dust.

Temperature : 5~35°C

Humidity : 30~80RH

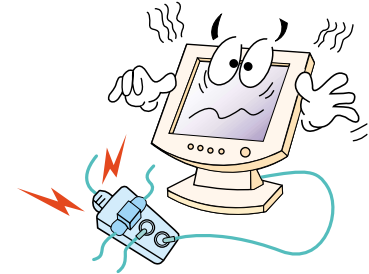


L550S 15" TFT LCD Color Monitor



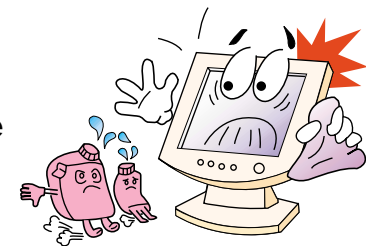
Be sure to turn the monitor off before plugging the power cord into the socket. Make sure that the power cord and the other cords are securely and rightly connected.

Overloaded AC outlets and extension cords are dangerous, as are frayed power cords and broken plugs, which may cause electric shock or fire. Call your service technician for replacement.



Do not use sharp tools such as a pin or a pencil near the monitor, as they may scratch the LCD surface.

Do not use a solvent, such as benzene, to clean the monitor, as it will damage the LCD surface.



L550S

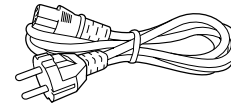
15" TFT LCD Color Monitor

Cleaning and Maintenance

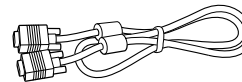
- To avoid risk of electric shock, do not disassemble the display unit cabinet. The unit is not user-serviceable. Remember to unplug the display unit from the power outlet before cleaning.
- Do not use alcohol (methyl, ethyl or isopropyl) or any strong dissolvent. Do not use thinner or benzene, abrasive cleaners or compressed air.
- Do not wipe the screen with a cloth or sponge that could scratch the surface.
- To clean your antistatic screen, use water and a special microfiber screen cleaning tissue used in optical lens cleaning, or lightly dampen a soft, clean cloth with water or a mild detergent.
- If the instructions above do not help in removing stains, contact an authorized service agent.

3. Installing the monitor 3-1. Packing List

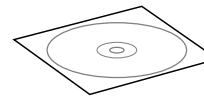
The following items should be found in the packaging.



Power cord



Signal cable



Compact Disc



UK



Japan



America/Canada



Europe



South Africa



Australia



Korea

! Above power cord can be changed upon different voltage areas. Please contact your dealer if anything is missing or damaged.

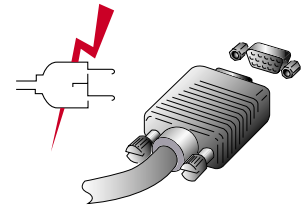
Other power cord except the cord packed in the product or longer than 3m may affect EMC of the product in operating condition.

3-2. Selecting a suitable location

- Place the monitor at least 30cm from other electrical or heat-emitting equipment and allow at least 10cm on each side for ventilation.
- Place the monitor in a position where no light shines directly onto or is reflected on the screen.
- To reduce eye strain, avoid installing the display unit against a bright background such as a window.
- Position the monitor so that the top of the screen is no higher than eye level.
- Position the monitor directly in front of you at a comfortable reading distance (around 45 to 90cm)

3-3. Connecting the monitor

- !** Before you start cabling your monitor, check that the power is off on all units. To avoid any possibility of electric shock, always connect your equipment to properly earthed outlets.

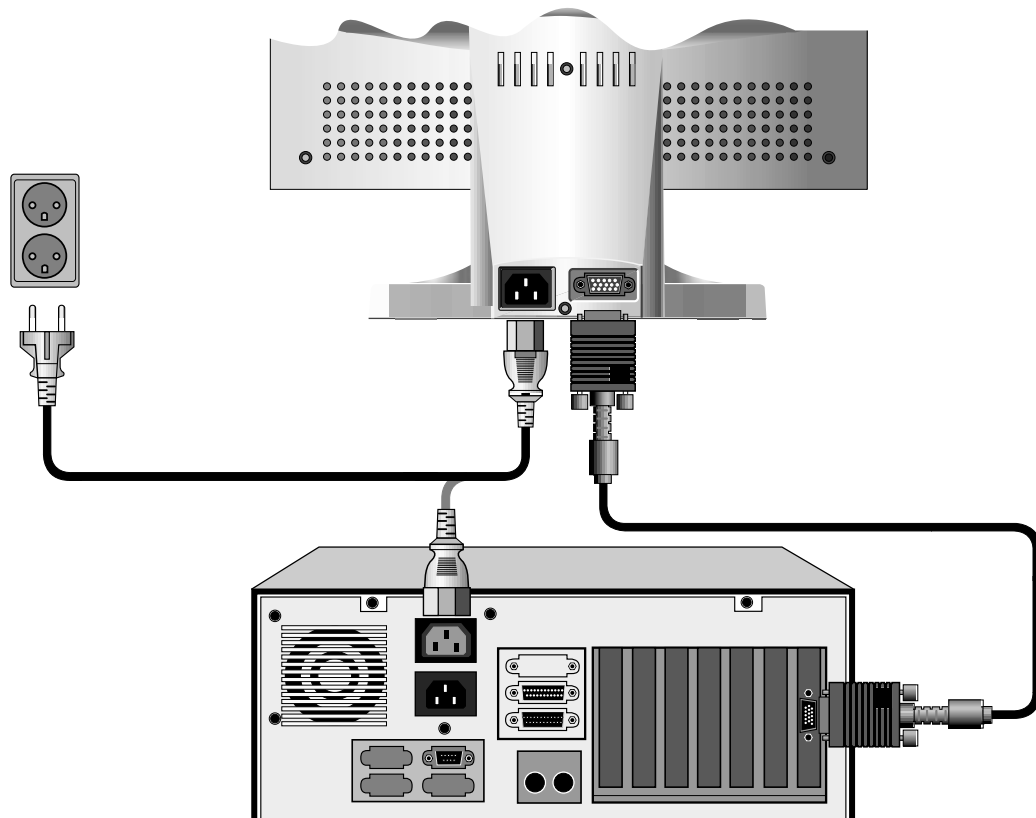


1. Insert the other 15-pin signal cable connector into the 15-pin VGA connection on your computer and screw it down.
2. Plug the power cord connection to connection on the monitor.
3. Plug the other end of the power cord to your computer's main supply or to a 100V-240V earthed electrical outlet.
4. Turn on the monitor using the power switch and check that the power LED is on. If not, repeat steps 1,2,3 and 4 or refer to the Troubleshooting section of this guide.

L550S

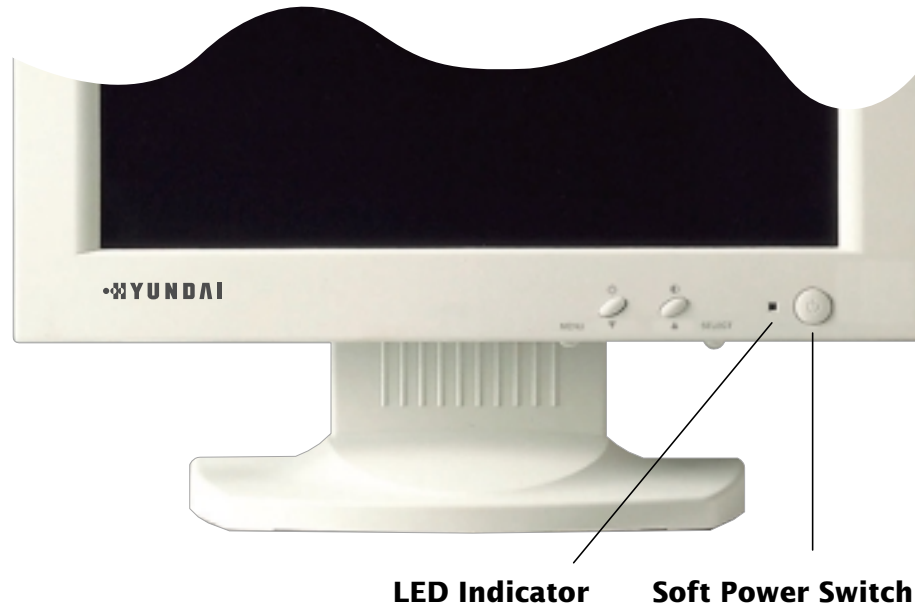
15" TFT LCD Color Monitor

5. Turn on the power to the computer. The picture will appear within about 10 seconds. Adjust the picture to obtain optimum picture quality. See section [Adjusting the picture](#) in this guide for more information.



L550S

15" TFT LCD Color Monitor



3-4. Setting the refresh rate

Follow the instructions below to set your refresh rate in Windows 98.

1. Go to the configuration window(Start-Settings-Configuration window).
2. Double click on the 'Display' icon.
3. Click on the 'Settings' tab.
4. Click on the 'Advanced' button.
5. Click on 'Adapter' and select 60Hz from the list.
6. Click on 'Apply' to accept the selected value.

Preset Timing Table

! If the signal from the system doesn't equal to the preset timing mode, adjust the mode with reference to the user guide of videocard because the screen may not be displayed.

The recommended setting is a resolution of 1024x768 and a refresh rate of 60Hz.

No.	Resolution	Horizontal Frequency	Refresh rate
1	640 x 350	31.5 KHz	70 Hz
2	640 x 400	31.5 KHz	70 Hz
3	720 x 400	31.5 KHz	70 Hz
4	640 x 480	31.5 KHz	60 Hz
5	640 x 480	37.9 KHz	73 Hz
6	800 x 600	35.2 KHz	56 Hz
7	800 x 600	37.9 KHz	60 Hz
8	800 x 600	48.1 KHz	72 Hz
9	800 x 600	46.9 KHz	75 Hz
10	832 x 624	49.7 KHz	75 Hz
11	* 1024 x 768	48.4 KHz	60 Hz
12	1024 x 768	56.5 KHz	70 Hz
13	1024 x 768	60.0 KHz	75 Hz


* Recommended primary mode.

4. Adjusting the picture

You can adjust the screen display by using the buttons located below the screen.



4-1. Using the On Screen Display

1. Push the MENU button to call the OSD to the screen. The resolution and frequency are displayed at the top of the menu box for your information.
 *The resolution is displayed only when the monitor works in the preset mode.*
2. Push the ▲ or ▼ button to choose the item you want to adjust. The selected item is highlighted.
3. Push the SELECT button to adjust the highlighted item.
4. Use the ▲ or ▼ button to adjust the selection.
5. Push the MENU button to return to the previous menu if you are in a submenu.
6. The display unit automatically saves the new settings in 1 second after your last adjustments and the menu disappears. You can also push the MENU button to make the menu disappear.

4-2. Direct access buttons



BRIGHTNESS

Use the button ▼ to select the brightness adjustment.
Adjust with ▲ or ▼ button.



CONTRAST

Use the button ▲ to select the contrast adjustment.
Adjust with ▲ or ▼ button.

SELECT

AUTO ADJUST

Push the button SELECT (AUTO) to adjust the shape of screen automatically.

4-3. OSD Adjustments

You can play the movie file to see how to adjust the picture image by clicking each icon or title hereunder.

The OSD adjustments available to you are listed below.



BRIGHTNESS

Adjusts the brightness of the screen.



CONTRAST

Adjusts the contrast of the screen.



H-POSITION

Adjusts the horizontal position of the entire screen image.



V-POSITION

Adjusts the vertical position of the entire screen image.



CLOCK (WIDTH)

Adjusts the horizontal size of the entire screen image.



CLOCK-PHASE

Adjusts the noise of the screen image.



AUTO ADJUST

Adjust the shape of screen automatically.



COLOR CONTROL

Color temperature affects the tint of the image. With lower color temperatures the image turns reddish and with higher temperatures bluish.

L550S

15" TFT LCD Color Monitor

There are three color settings available: Mode 1(a cool white), Mode 2(a warm white) or USER. With the USER setting you can set individual values for red, green and blue.



INFORMATION

Information shows the horizontal and vertical frequency of your display unit. The Information menu lists modes which are preset at the factory and modes which have been defined by user. It also shows you the mode your display unit is currently operating in. you can set the display mode (frequency and refresh rate) in Windows.



LANGUAGE

You can select the language in which adjustment menus are displayed. The following languages are available: English, French, German, Italian, Spanish, Swedish, Finnish, Danish, Portuguese and Japanese or Korean.



OSD ADJUST

You can adjust the OSD menu's horizontal or vertical position on the screen. You can also adjust display time of the OSD menu from 5 to 50 seconds.



TEST

Displays internal test pattern.



The Clock Phase may not be optimized when the input timing is not comply with VESA standard timing. In order to get the optimized result of Auto Adjust Function, it is recommended to display bright color image on the entire screen before proceeding Auto Adjust Function.

5. Display power management

If the power management function of your computer is enabled, your monitor turns on and off automatically. You can control power management features from your computer.

Your computer may have power management features which enable the computer or monitor to enter a power saving mode when the system is idle. You can reactivate the system by pressing any key or moving the mouse.

Mode	LED	Power consumption
Normal	Green	40 W
off	Orange	\leq 5 W

! The power button does not disconnect the monitor from the mains. The only way to isolate the monitor completely from the mains supply is to unplug the mains cable.

6. Troubleshooting

If your monitor is not functioning properly, you may be able to solve the problem by reading followings.

Problem	Possible solution
Blank screen	<p>If the power LED is not lit, push the Soft power switch or check the AC cord to turn the monitor on. If the display unit is powered through the computer, check that the computer is switched on.</p> <p>The display unit might be in standby mode. Push one of the keyboard keys. Check that the keyboard is properly connected to the computer.</p> <p>Check that the signal cable connector is properly connected and that the connection pins are not bent or damaged. If the connector is loose, tighten the connector's screws.</p> <p>Check that the power cable is correctly connected to the display unit and to the power outlet.</p>
Error message: <i>Video mode not supported</i>	<p>Check the resolution and the frequency on the video port of your computer.</p> <p>Compare these values with the data in the Preset Timing Table.</p>
The display does not enter power management mode	<p>The video signal from the computer does not comply with VESA DPMS standard. Either the computer or the graphics adapter is not using the VESA DPMS power management function.</p>

L550S

15" TFT LCD Color Monitor

Problem	Possible solution
Color defects	Check that the signal cable connector is properly connected and that the connection pins are not bent or damaged. Try another color temperature.
Size, position, shape or quality unsatisfactory	Adjust the picture characteristics as described in the section <i>Adjusting the picture</i> .
Duplicated images	A problem with your graphics adapter or display unit. Contact your service representative.
Image is not stable	Check that the display resolution and frequency from your PC or graphic adapter is an available mode for your monitor. In your PC, you can check through Control panel, Display, Settings. If the setting is not correct, use your computer utility program to change the display settings.

L550S

15" TFT LCD Color Monitor

Contacting service

If the above troubleshooting hints do not help you find a solution to the problem, contact an authorized service agent. If the monitor is sent for service, use the original package if possible.

Unplug the display unit from the power outlet and contact a service agent when:

- The monitor does not operate normally according to the operating instructions.
- The monitor exhibits a distinct change in performance.
- The monitor has been dropped or the cabinet has been damaged.
- The monitor has been exposed to rain, or water or liquid has been spilled onto the monitor.

L550S

15" TFT LCD Color Monitor

7. Specifications

LCD	15"viewable, Diagonal Pixel pitch 0.297 mm, AM-TFT
Brightness	180cd/m ² (Min.), 200cd/m ² (Typ.)
Response Time	40msec
Display area	304 X 228 mm
Number of color	16,7 million colors (with dithering)
Input signals	R.G.B Analog, 15 pin D-sub
Frequency rate	Horizontal : 31.0 to 60.0KHz Vertical : 44 to 75Hz
Maximum bandwidth	80 MHz
Maximum resolution	1024X768@75Hz
Input voltage	100-240 VAC 50/60Hz, 1.0A
Power consumption	40W
Power management	VESA DPMS
Plug & Play	VESA DDC 1/2B
OSD menu	BRIGHTNESS, CONTRAST, H. POSITION, V. POSITION, CLOCK, CLOCK-PHASE, AUTO ADJUST, COLOR CONTROL, INFORMATION, LANGUAGE, OSD ADJUST, TEST
Ergonomics, Safety and EMC	TCO FCC Class B, CE, cULus, TÜV-GS, NEMKO, DEMKO, FIMKO, SEMKO
Operating Temperature	5 ~ 35°C
Weight	4.5Kg unpacked, 6.3Kg packed
Dimensions (W X H X D mm)	380X 385 X 174 mm

• Specification is subject to change without notice for performance improvement.