

**HYUNDAI**  
HYUNDAI IT CORP.

Type No. L22C0E081

Model. W223D

Multi Function Wide Monitor

**User's Guide**



# U.S.A.

## U.S.FEDERAL COMMUNICATIONS COMMISSION RADIO FREQUENCY INTERFERENCE STATEMENT INFORMATION TO THE USER

NOTE : This equipment has been tested and found to comply with the limits for a Class B digital device pursuant to Part 15 of the FCC Rules.

These limits are designed to provide reasonable protection against harmful interference in a residential installation.

This equipment generates, uses, and can radiate radio frequency energy and, if not installed and used in accordance with the instructions, may cause harmful interference to radio communications.

However, there is no guarantee that interference will not occur in a particular installation.

If this equipment does cause harmful interference to radio or television reception, which can be determined by turning the equipment off and on, the user is encouraged to try to correct the interference by one or more of the following measures:

- Reorient or relocate the receiving antenna.
- Increase the separation between the equipment and receiver.
- Connect the equipment into an outlet of a circuit different from that to which the receiver is connected.
- Consult the dealer or an experienced radio /TV technician for assistance.

Changes or modification not expressly approved by the party responsible for compliance could void the user's authority to operate the equipment.

Connecting of peripherals requires the use of grounded shielded signal cables.

# W223D

## Multi Function Wide Monitor

### Contents

<b>1. Introduction.....</b>	<b>1/26</b>
<b>2. Safety Information.....</b>	<b>1/26</b>
<b>3. Installing the monitor.....</b>	<b>4/26</b>
3-1. Packing List .....	4/26
3-2. Selecting a suitable location.....	5/26
3-3. Connecting the PC .....	5/26
3-4. Setting the refresh rate.....	9/26
Preset Timing Table.....	10/26
3-5. Watching the DVD/HDTV .....	11/26
3-6. User's Environment .....	12/26
<b>4. Adjusting the picture.....</b>	<b>14/26</b>
4-1. Using the On Screen Display .....	15/26
4-2. Direct access buttons.....	15/26
4-3. OSD Adjustments .....	16/26
<b>5. Display power management .....</b>	<b>22/26</b>
Reducing power consumption.....	22/26
<b>6. Troubleshooting .....</b>	<b>23/26</b>
<b>7. Specifications .....</b>	<b>26/26</b>



# W223D

## Multi Function Wide Monitor

### 1. Introduction

This manual contains instructions for installing and operating HYUNDAI IT CORP. W223D.

HYUNDAI IT CORP. W223D is a highly ergonomic color display unit.

- 22" Viewable WSXGA+ LCD
- High quality screen re-scaling capability
- 100-240V AC input voltage
- VESA DPMS (Display Power Management Signaling)
- VESA DDC1/2B compatibility
- Advanced digital On-Screen-Display controls
- Digital Signal Input by DVI-1.0 Compatibility
- HDMI Signal Input by HDMI-1.3 Compatibility
- Fast and accurate auto adjustment
- Most advanced image scaling
- Supporting VESA Flat Panel Monitor Physical Mounting Interface

### 2. Safety Information

This Monitor has been engineered and manufactured to assure your safety. You can prevent serious electrical shock and other hazards by keeping in mind the following:



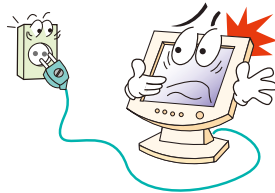
Do not place anything wet on the monitor or the power cord. Never cover the ventilation openings with any material and never touch them with metallic or inflammable materials.

# W223D Multi Function Wide Monitor

Avoid operating the monitor in extreme heat, humidity or areas affected by dust.

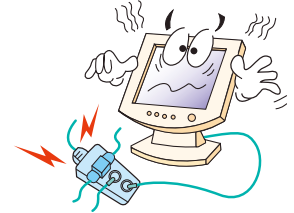
Temperature : 5~40°C

Humidity : 30~80RH



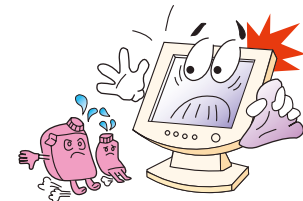
Be sure to turn the monitor off before plugging the power cord into the socket. Make sure that the power cord and the other cords are securely and rightly connected.

Overloaded AC outlets and extension cords are dangerous, as are frayed power cords and broken plugs, which may cause electric shock or fire. Call your service technician for replacement.



Do not use sharp tools such as a pin or a pencil near the monitor, as they may scratch the LCD surface.

Do not use a solvent, such as benzene, to clean the monitor, as it will damage the LCD surface.





# W223D

## Multi Function Wide Monitor

### Cleaning and Maintenance

Apparatus shall not be exposed to dripping or splashing and that no objects filled with liquids, such as vases, shall be placed on the apparatus.

Shall be connected to a MAINS socket outlet with a protective earth connection.

The disconnected device shall remain readily operable.

- To avoid to risk of electric shock, do not disassemble the Cabinet of display unit. The Cabinet is not user-serviceable. Remember to unplug the display unit from the power outlet before cleaning.
- Do not use alcohol (methyl, ethyl or isopropyl) or any strong dissolvent. Do not use thinner or benzene, abrasive cleaners or compressed air.
- Do not wipe the screen with a cloth or sponge that could scratch the surface.
- To clean your antistatic screen, use water and a special microfiber screen cleaning tissue used in optical lens cleaning, or lightly dampen a soft, clean cloth with water or a mild detergent.
- If the instructions above do not help in removing stains, contact an authorized service agent.

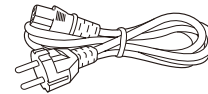
# W223D

## Multi Function Wide Monitor

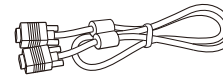
### 3. Installing the monitor

#### 3-1. Packing List

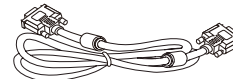
The following items should be found in the packaging.



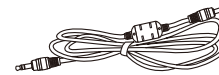
Power Cord



Signal Cable



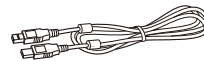
DVI Cable



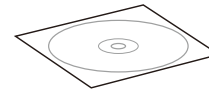
Audio Cable



HDMI Cable  
(Option)



USB Cable  
(Option)



Compact Disc



UK



Japan



America/Canada



Europe



South Africa



Australia



Korea



Above power cord can be changed upon different voltage areas.  
Please contact your dealer if anything is missing or damaged.

Other power cord except the cord packed in the product or longer than 3m  
may affect EMC of the product in operating condition.

# W223D

## Multi Function Wide Monitor

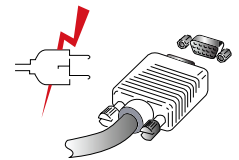
### 3-2. Selecting a suitable location

- Place the monitor at least 30cm from other electrical or heat-emitting equipment and allow at least 10cm on each side for ventilation.
- Place the monitor in a position where no light shines directly onto or is reflected on the screen.
- To reduce eye strain, avoid installing the display unit against a bright background such as a window.
- Position the monitor so that the top of the screen is no higher than eye level.
- Position the monitor directly in front of you at a comfortable reading distance. (around 45 to 90cm)


### 3-3. Connecting the PC

- 15 pin D-sub / DVI-D / HDMI

**!** Before you start cabling your monitor, check that the power is off on all units. To avoid any possibility of electric shock, always connect your equipment to properly earthed outlets.



1. Insert the other 15-pin/DVI-D/HDMI signal cable connector into the 15-pin VGA/DVI-D/ HDMI connection on your computer and screw it down.

 *When using DVI to HDMI cable connection, you must use audio connection and set "DVI to HDMI AUDIO" menu to On.*

2. Plug the power cord connection to connection on the monitor.
3. Plug the other end of the power cord to your computer's main supply or to a 100V-240V earthed electrical outlet.
4. Turn on the monitor using the power switch and check that the power LED is on. If not, repeat steps 1,2,3 and 4 or refer to the Troubleshooting section of this guide.

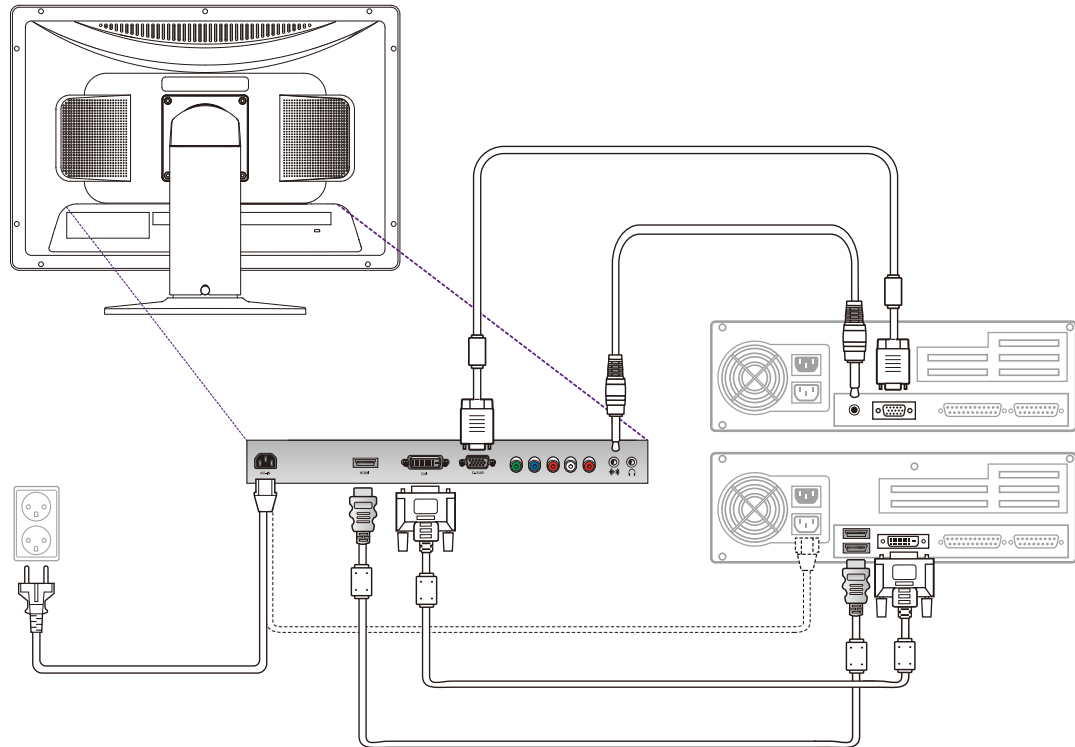


# W223D

## Multi Function Wide Monitor

- Way to Connect

5. Turn on the power to the computer. The picture will appear within about 10 seconds. Adjust the picture to obtain optimum picture quality. See section adjusting the picture in this guide for more information.



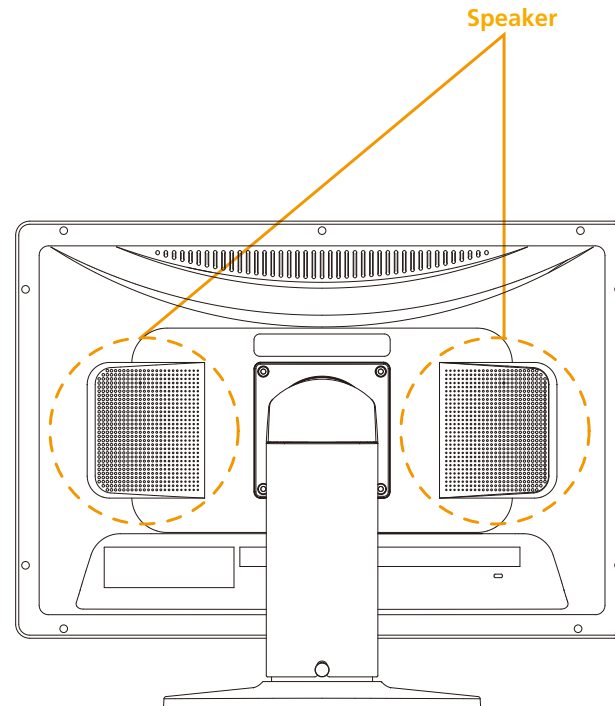
# W223D

## Multi Function Wide Monitor

- Headphone

This monitor has an audio system including two micro loudspeakers. Each of two micro loudspeakers has a 3W(max.) output power. This system also supports a headphone output jack.

**!** This system has been tuned to get a best tone quality which an audio input level is under 500mv rms. If the input level is more than 500mv rms, you must tune down the audio input as the audio output tone may be distorted.



# W223D

## Multi Function Wide Monitor

### 3-4. Setting the refresh rate

Follow the instructions below to set your refresh rate in Windows 98/ME/XP/2000/VISTA.

1. Go to the configuration window(Start-Settings-Configuration window).
2. Double click on the 'Display' icon.
3. Click on the 'Settings' tab.
4. Click on the 'Advanced' button.
5. Click on 'Adapter' and select 60Hz from the list.
6. Click on 'Apply' to accept the selected value.



# W223D

## Multi Function Wide Monitor

### Preset Timing Table

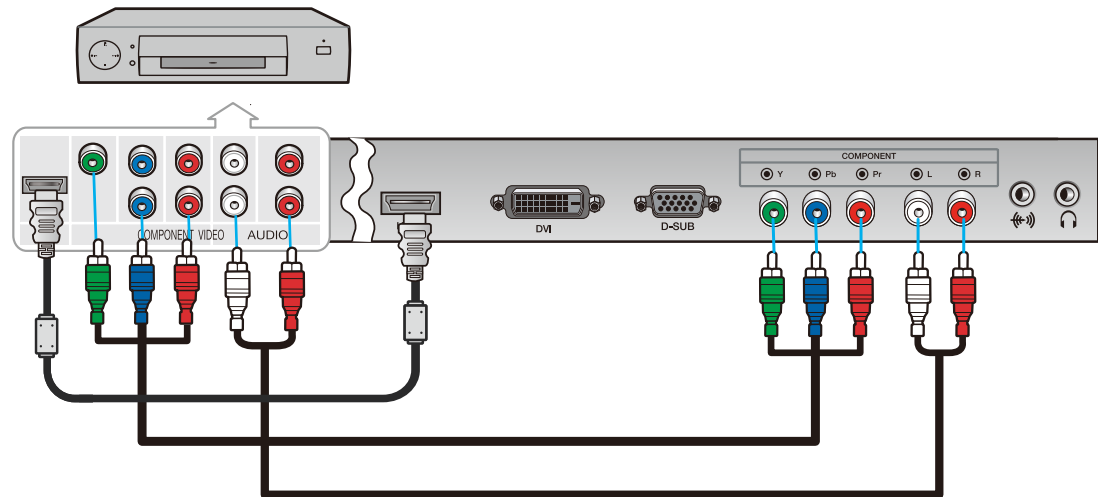
**!** If the signal from the system doesn't equal to the preset timing mode, adjust the mode with reference to the user guide of videocard because the screen may not be displayed.

No.	Resolution	H-Freq.(KHz)	V-Freq.(Hz)	Supported Mode	
				Analog	DVI
1	640 X 350	31.4	70.0	•	
2	720 X 400	31.4	70.0	•	
3	640 X 480	31.4	59.9	•	•
4	640 X 480	37.5	75.0	•	
5	800 X 600	35.1	56.2	•	
6	800 X 600	37.8	60.3	•	•
7	800 X 600	46.8	75.0	•	
8	832 X 624	49.7	74.5	•	
9	1024 X 768	48.3	60.0	•	
10	1024 X 768	56.4	70.0	•	
11	1024 X 768	60.0	75.0	•	•
12	1152 X 864	67.5	75.0	•	
13	1152 X 870	68.6	75.0	•	
14	1280 X 960	60.0	60.0	•	•
15	1280 X 1024	63.9	60.0	•	•
16	1280 X 1024	79.9	75.0	•	
17	1680 X1050	64.7	60.0	•	•
18	1600 X 1200	75.0	60.0	•	•
19	1920 X 1200	84.0	59.9	•	•
20	480 i/p		60	Video Mode	
21	576 i/p		50		
22	720 p		50/60		
23	1080 i/p		50/60		

### 3-5. Watching the DVD/HDTV

- Connecting component cable

- Connect component cable (Y, Pb, Pr) between output terminal (Y, Pb, Pr) of DVD player and input terminal (Y, Pb, Pr) of DVD on the rear of W243D.  
(Connect cable and terminal in the matching color)
- Connect Audio cable between Audio output terminal of DVD player and Audio input terminal of DVD Audio on the rear of W243D.  
(Connect cable and terminal in the matching color)



Output terminal mark (Y, Pb, and Pr) of DVD player may be written as Y, B-Y, R-Y/Y-Cb-Cr / Y-Pb-Pr.( It depends on DVD player)

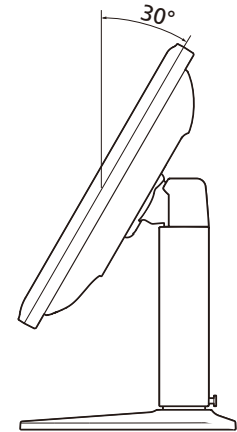
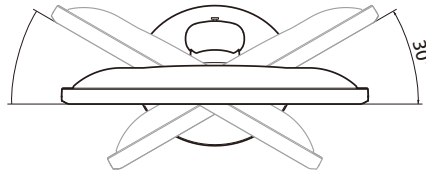
# W223D

## Multi Function Wide Monitor

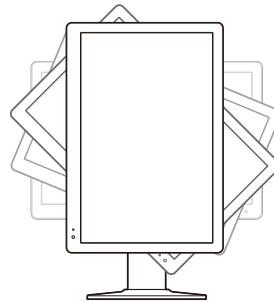
### 3-6. User's Environment

Recommended Ergonomic User's Environment.

- Viewing angle of the monitor should be between 0~30 degree.



- Supports Pivot (Option)



The screen can be vertically rotated by 90 degrees. This reduces the inconvenience of having to drag scrollbars and roll mouse wheels when working with documents or surfing the web.

\* In case that pivot function is not supported from the graphic card in your pc, you could use pivot function by downloading the program through internet.



# W223D

## Multi Function Wide Monitor

### Kensington Security (Locking) Slot

- This display unit supports a Kensington-type security device to secure your monitor. Kensington lock is not included.
- To purchase and install the Kensington locking device, please refer to the following contact information.

**\* Kensington Technology Group**

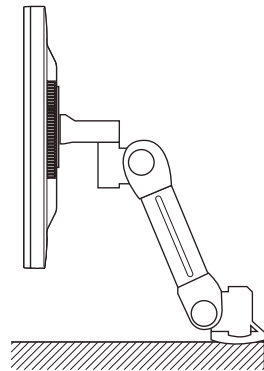
• Address : 2000 Alameda de las Pulgas 2F san mateo, California 94403-1289  
• Tel : +1 650 572 2700 · Fax : +1 650 572 9675 · Web-site : [www.kensington.com](http://www.kensington.com)

### VESA MOUNT'G

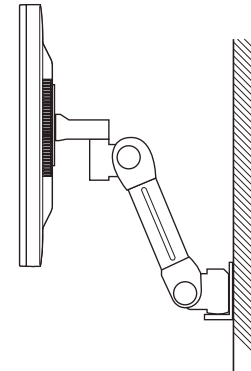
- This display unit supports VESA FPMPMI standard for 100mmx100mm screw mounting by giving 4 screw holes inside the base stand of the unit.
- For buying VESA Flat Panel Monitor Mounting Devices, please contact following information.

**\* Ergotron, Inc.**

• Address : Ergotron Europe Kuiperbergweg 50 1101 AG Amsterdam the Netherlands  
• Tel : +3 1 20 696 60 65 · Fax : +3 1 20 609 04 59 · E-mail : [info.eu@ergotron.com](mailto:info.eu@ergotron.com)



Desk Mount



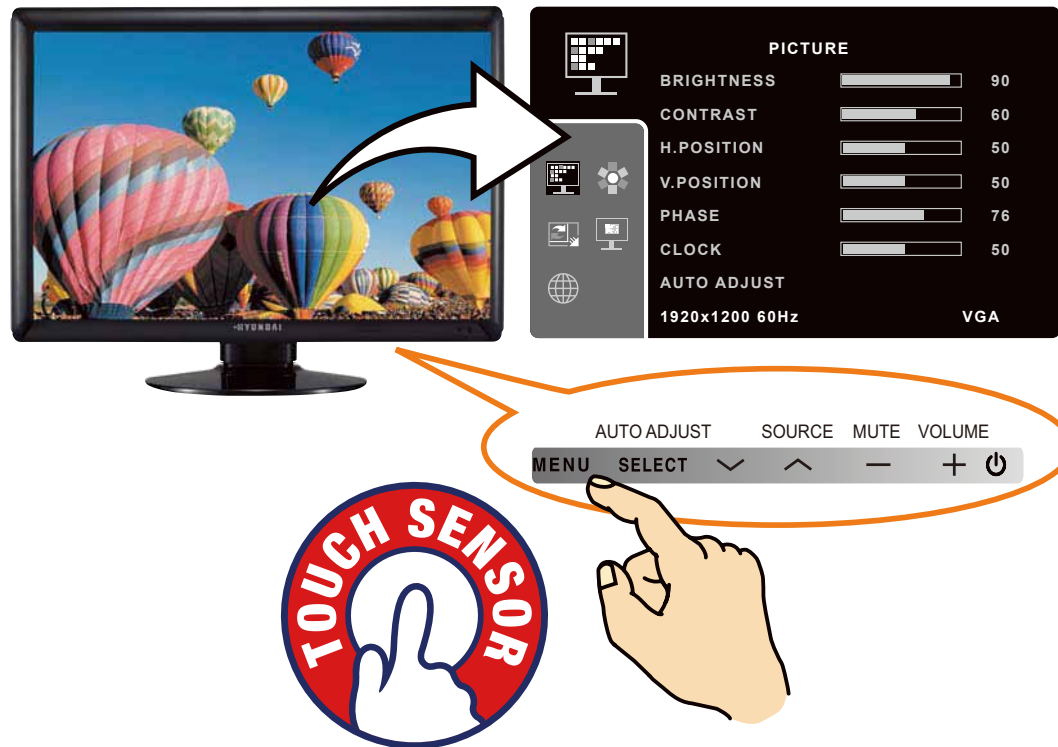
Wall Mount

# W223D

## Multi Function Wide Monitor

### 4. Adjusting the picture

You can adjust the screen display by using the buttons located below the screen.



The second Menu from the OSD can't be chosen in digital-mode.

# W223D

## Multi Function Wide Monitor

### 4-1. Using the On Screen Display

To make adjustments in the On Screen Display, follow these steps:

MENU → ^ ∨ → SELECT → ^ ∨ → - + → MENU → MENU

1. Push the MENU button to call the OSD to the screen.
2. Push the ^ or ∨ button to choose the group you want to adjust. The selected group is highlighted.
3. Push the SELECT button.
4. Push the ^ or ∨ button to choose the item you want to adjust.
5. Use the - or + button to adjust the selection.
6. Push the MENU button to return to the previous menu if you are in a submenu.
7. You can push the MENU button to make the menu disappear.

MENU SELECT ∨ ^ - + ⏻

### 4-2. Direct access buttons

#### SELECT **AUTO ADJUST**

At first display a full screen such as Window's background. Push the SELECT (AUTO) button to adjust the shape of screen automatically.

#### + **VOLUME**

Use the + button to select the Volume adjustment. Adjust with - or + button.

#### - **MUTE**

Use the button - to switch the sound off temporarily.

#### ^ **SOURCE**

Use the button ^ to switch the other input from current input. (VGA -> COMPONENT -> DVI -> HDMI)

<INPUT SELECT>



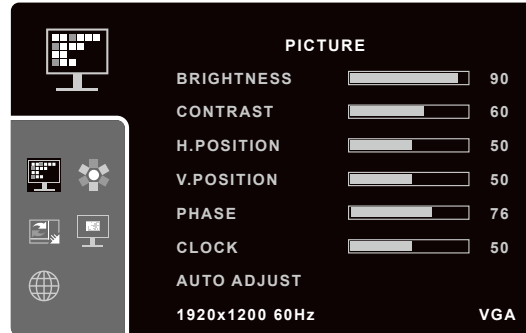
# W223D

## Multi Function Wide Monitor

### 4-3. OSD Adjustments

- PICTURE

#### PC ANALOG (D-SUB 15 PIN)



#### **BRIGHTNESS**

To adjust the brightness of the screen.

#### **CONTRAST**

To adjust the contrast of the screen.

#### **H.POSITION**

To move image left and right.

#### **V.POSITION**

To move image up and down.

#### **PHASE**

To adjust the noise of the screen image.

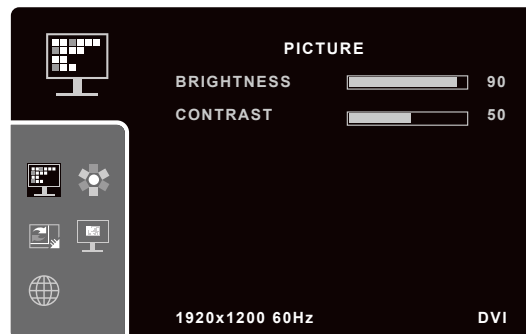
#### **CLOCK**

To adjust the horizontal size of the entire screen image.

#### **AUTO ADJUST**

You can adjust the shape of the screen automatically into the full screen pattern.  
(Not operational in DVI, HDMI and COMPONENT mode)

#### DVI MODE



#### **BRIGHTNESS**

To adjust the brightness of the screen.

#### **CONTRAST**

To adjust the contrast of the screen.

# W223D

## Multi Function Wide Monitor

### HDMI, COMPONENT MODE

#### PICTURE MODE

You can select the type of picture which best corresponds to your viewing requirements. The mode is changed in the following order by pressing - or + button.

STANDARD ->DYNAMIC ->MILD ->USER

#### STANDARD

For general Color tone.

#### DYNAMIC

To be Sharper image.

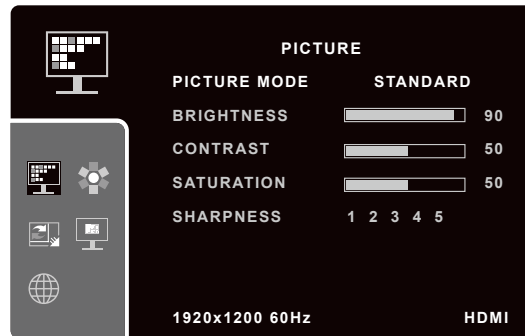
#### MILD

To be Smoother image.

#### USER

User can adjust directly settings of a screen menu.

*\* If you make any changes to these settings, the picture mode is automatically switched to User.*



#### BRIGHTNESS

To adjust the brightness of the screen.

#### CONTRAST

To adjust the contrast of the screen.

#### SATURATION

To adjust color density.

#### SHARPNESS

To adjust sharpness of screen.

# W223D

## Multi Function Wide Monitor

- COLOR

### PC ANALOG (D-SUB 15 PIN)

#### COLOR TEMPERATURE

You can select the most comfortable colour tone to your eyes.  
The mode is changed in the following order by pressing - or + button.

STANDARD ->REDDISH ->BLUISH ->USER

#### STANDARD

For general Color tone.

#### REDDISH

For Reddish color with warm tone.

#### BLUISH

For Bluish color with cool tone

#### USER

For adjusting degree of RGB as user wants

*\* If you make any changes to these settings, the Color Temperature mode is automatically switched to User.*



#### RED

For adjusting the RED color as user wants.

#### GREEN

For adjusting the GREEN color as user wants.

#### BLUE

For adjusting the BLUE color as user wants.

#### AUTO COLOR

TO adjust the horizontal size of the entire screen image. (Not operational in DVI, HDMI and COMPONENT mode)



# W223D

## Multi Function Wide Monitor

### HDMI, DVI and COMPONENT MODE

#### COLOR TEMPERATURE

You can select the most comfortable colour tone to your eyes.  
The mode is changed in the following order by pressing - or + button.

STANDARD ->REDDISH ->BLUISH ->USER

#### STANDARD

For general Color tone.

#### REDDISH

For Reddish color with warm tone.

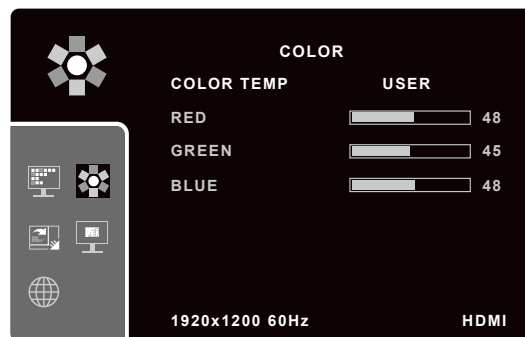
#### BLUISH

For Bluish color with cool tone

#### USER

For adjusting degree of RGB as user wants

*\* If you make any changes to these settings, the Color Temperature mode is automatically switched to User.*



#### RED

For adjusting the RED color as user wants.

#### GREEN

For adjusting the GREEN color as user wants.

#### BLUE

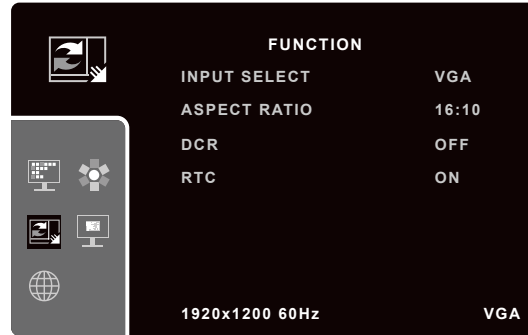
For adjusting the BLUE color as user wants.

# W223D

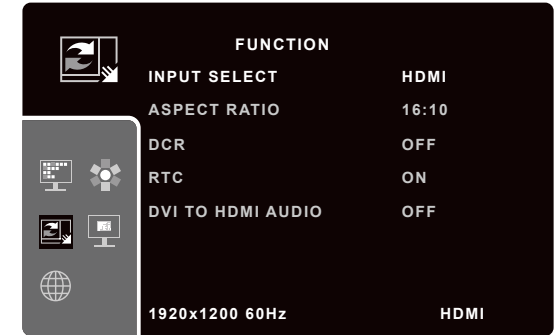
## Multi Function Wide Monitor

• FUNCTION

### PC ANALOG, DVI and COMPONENT MODE



### HDMI MODE



#### INPUT SELECT

To switch between current source and other input source. (VGA/ COMPONENT/ DVI/ HDMI)

#### ASPECT RATIO

If you choose ASPECT RATIO on the OSD menu, you can adjust the following.

- 16:10(Full): Shows full screen regardless of screen size.
- 16: 9: Displays image at 16:9 ratio.
- 4:3: Displays image at 4:3 ratio.
- 1:1: Displays image according to actual input pixels.
  - \* 1900x1200 mode displays image to only 16:10 ratio.
  - \* 1600x1200 mode does not support image of 16:9 ratio.
  - \* When DCR function is set to On, BRIGHTNESS menu cannot be activated.
  - \* You can control DCR function only when setting 16:10 aspect ratio.

#### DCR (Dynamic Contrast Ratio)

To increase contrast ratio by on and off.

#### RTC (Response Time compensation)

To control response time by on and off.

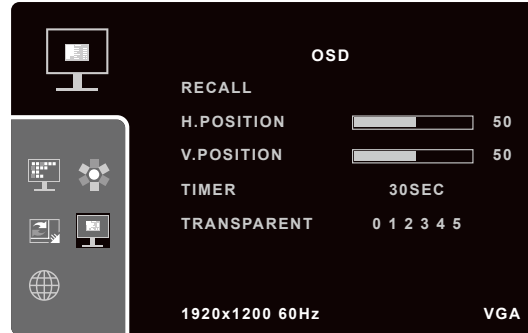
#### DVI TO HDMI AUDIO (Only HDMI mode)

To enable audio of your monitor when using the DVI to HDMI cable connection.

# W223D

## Multi Function Wide Monitor

• OSD



**RECALL**

Recall the saved initial data.

**H.POSITION**

To adjust horizontal position of OSD on the screen.

**V.POSITION**

To adjust vertical position of OSD on the screen.

**TIMER**

To adjust OSD Display time on the screen.

**TRANSPARENT**

To adjust the transparency of OSD window.

• LANGUAGE



**LANGUAGE**

You can select the language in which adjustment menus are displayed. The following languages are available.

English, Spanish, German, Portuguese, French, Korean, Italian, Japanese, Dutch, Danish, Swedish, Polish, Finnish, Czech.

# W223D

## Multi Function Wide Monitor

### 5. Display power management

### Reducing power consumption

If the power management function of your computer is enabled, your monitor turns on and off automatically. You can control power management features from your computer.

Your computer may have power management features which enable the computer or monitor to enter a power saving mode when the system is idle. You can reactivate the system by pressing any key or moving the mouse.

Mode	LED	Power consumption
Normal	Blue	55W(Typ)
Off	Not illuminated	0.5W(Typ)
VESA DPMS	RED(Orange)	0.5W(Typ)
Unplugged	Not illuminated	0 W



The power button does not disconnect the monitor from the mains. The only way to isolate the monitor completely from the mains supply is to unplug the mains cable.

# W223D

## Multi Function Wide Monitor

### 6. Troubleshooting

If your monitor is not functioning properly, you may be able to solve the problem by following the suggestions below :

Problem	Possible solution
Blank screen	<p>If the power LED is not lit, push the Soft power switch or check the AC cord to turn the monitor on. If the display unit is powered through the computer, check that the computer is switched on.</p> <p>The display unit might be in standby mode. Push one of the keyboard keys. Check that the keyboard is properly connected to the computer.</p> <p>Check that the signal cable connector is properly connected and that the connection pins are not bent or damaged. If the connector is loose, tighten the connector's screws.</p> <p>Check that the power cable is correctly connected to the display unit and to the power outlet.</p>
Error message: Video mode not supported	<p>Check the resolution and the frequency on the video port of your computer.</p> <p>Compare these values with the data in the Preset Timing Table.</p>
The display does not enter power management mode	<p>The video signal from the computer does not comply with VESA DPMS standard. Either the computer or the graphics adapter is not using the VESA DPMS power management function.</p>

# W223D

## Multi Function Wide Monitor

Problem	Possible solution
Color defects	Check that the signal cable connector is properly connected and that the connection pins are not bent or damaged. Try another color temperature.
Size, position, shape or quality unsatisfactory	Adjust the picture characteristics as described in the section OSD Adjustment(4-3).
Duplicated images	A problem with your graphics adapter or display unit. Contact your service representative.
Image is not stable	Check that the display resolution and frequency from your PC or graphic adapter is an available mode for your monitor. In your PC, you can check through Control panel, Display, Settings.  If the setting is not correct, use your computer utility program to change the display settings.
Message : No signal	Check that the signal cable connector is properly connected and that the connection pins are not bent or damaged. If the connector is loose, tighten the connector's screws. Check that the computer is switched on.
The power LED is a red color	The system entered a power saving mode. You can reactivate the system by pressing any key or moving the mouse.



### Contacting service

If the above troubleshooting hints do not help you find a solution to the problem, contact an authorized service agent. If the monitor is sent for service, use the original package if possible.

Unplug the display unit from the power outlet and contact a service agent when:

- The monitor does not operate normally according to the operating instructions.
- The monitor exhibits a distinct change in performance.
- The monitor has been dropped or the cabinet has been damaged.
- The monitor has been exposed to rain, water or liquid has been spilled onto the monitor.

# W223D

## Multi Function Wide Monitor

### 7. Specifications

LCD	22" viewable, Diagonal, Pixel pitch 0.282 mm, A-si TFT
Display area	473.2(H) X 296(V), 22" Diagonal
Number of color	16.7 million colors ( 8bit Hi FRC )
Input signals	15pin D-sub / DVI-D / Component / HDMI
Frequency rate	Horizontal : 30.0 to 80.0KHz, Vertical : 56 to 75Hz
Maximum bandwidth	162MHz
Maximum resolution	1680 X 1050 @ 60Hz
Recommended resolution	1680 X 1050 @ 60Hz
Input voltage	100-240V, 2.0A
Power consumption	45W (Typ.)
Power management	VESA DPMS
Plug & Play	VESA DDC 1/2B
OSD menu	BRIGHTNESS, CONTRAST, H/V POSITION, PHASE, CLOCK, AUTO ADJUST, COLOR TEMPERATURE, AUTO COLOR, INPUT SELECT, ASPECT RATIO, DCR, RTC, RECALL, OSD H/V POSITION, TIMER, TRANSPARENT, LANGUAGE
Headphone	2ch X 3watts / Headphone Jack
VESA FPMPMI	100mm X100mm screw mounting
Ergonomics, Safety and EMC	Energystar cTUVus, TUV-GS, CB, FCC, CE, VCCI, GOST
Operating Temperature	5 ~ 40°C
Weights	9.9Kg unpacked, 12.8Kg packed
Dimensions (W X H X D mm)	522 X 412 X 210 mm

• Specification is subject to change without notice.

• HYUNDAI IT CORP. specification on "dead pixel" of LCD Panel applies to ISO 13406-2 Standard.