

Attentions



SWITCH OFF IN HOSPITALS

Please abide by relevant provisions or regulations. Please turn off your mobile phone near medical equipment.



SWITCH OFF WHEN REFUELING

Don't use the phone at a refueling point. Don't use near fuel or chemicals.



Micro SIM CARDS ARE PORTABLE

Keep your phone, phone parts and accessories out of children's reach.



BATTERY

Please do not destroy or damage the battery, it can be dangerous and cause fire.

Please do not throw battery in fire to avoid hazard.

When battery cannot be used, please dispose in safe environment.

Do not try to dismantle the battery.

If the battery or the charger is broken or old, please stop using them, and replace with certified genuine battery



USE QUALITY EQUIPMENT

Use authorized equipment to avoid danger



ROAD SAFETY COMES FIRST

Give full attention while driving, Park before using your phone. Please follow traffic rules of local city town.



INTERFERENCE

All wireless devices may be susceptible to cause interference, which could affect performance.



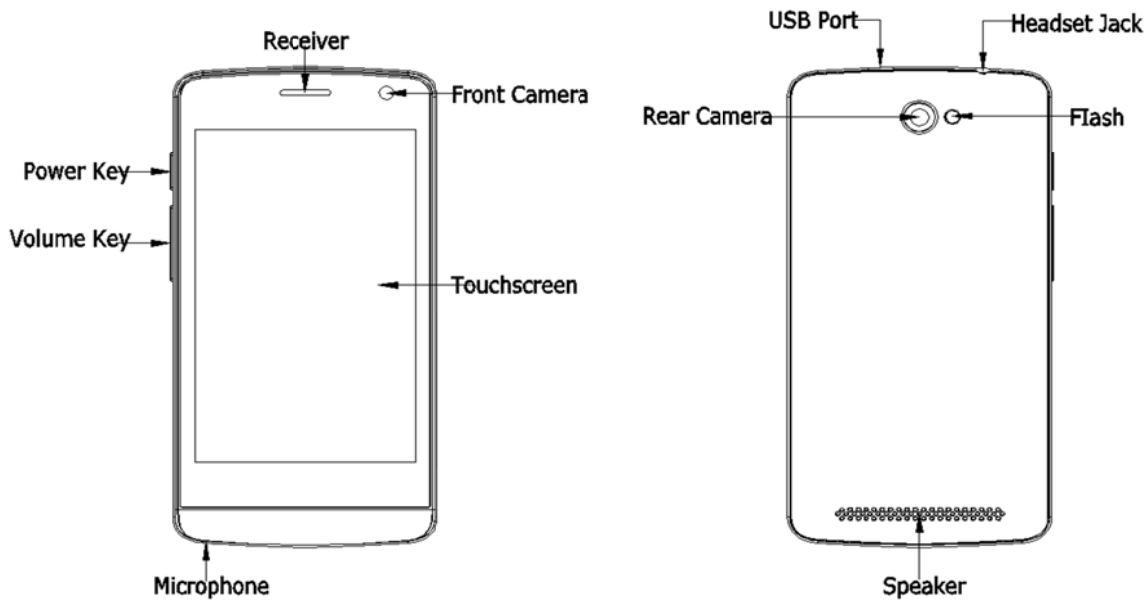
SWITCH OFF IN AIRCRAFT

Wireless devices can cause interference in aircraft. It's not only dangerous but also illegal to use mobile phone in an aircraft.




Get Started

Get to grip with the basics and have your phone up and running in no time.

Over view



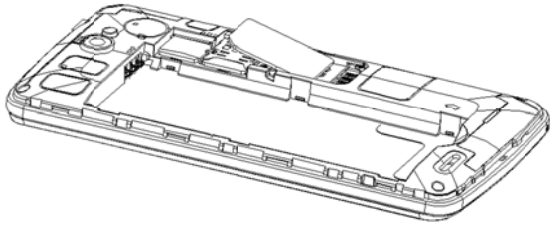
Keys definition

Keys	Definition
Power key (Left side)	a) Press to Turns on/off the screen. b) Press and Hold to power off or reboot the phone.
Volume key (Left side)	a) Press when call is in progress, increase or decrease the volume, when the phone is ringing, silences the ringer. On the home screen when no call in progress, increase or decrease the ringtone volume or sets the phone to the silent instead of ringing. In other applications, controls the volume of music, spoken directions and other audio. b) Press and hold to quickly increasing ringtone volume to maximum or minimum.
 Recent task key	Tap to open the options of WALLPAPER/WIDGETS/SETTINGS and switch the interface.
 Home key	a) Tap to return to Home screen. b) Long press enter into the recently used apps list
 Back key	a) Tap to return to the previous screen.

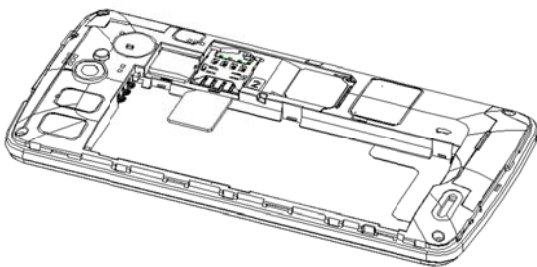
★ **Tip:** The battery of mobile phone is fixed. It cannot remove.

Insert SIM card

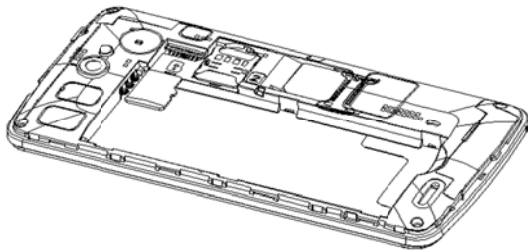
1. Remove the battery cover, put the SIM card into the card slot 1.



2. Put the SIM card into the card slot 2.



3. Put the SD card into card slot.

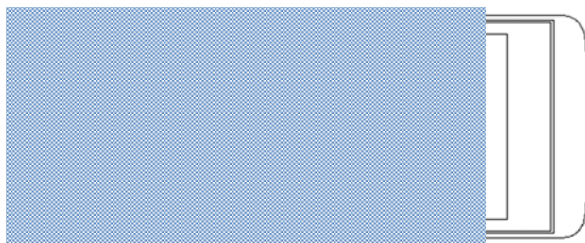


- ★ **Tip:** The SIM card is a small part. Please keep away from Children to avoid swallowing the card by accident.
Please do not touch the metal surface of SIM card and away from electromagnetic field to avoid damage data.

Charge the Battery

Charge the battery before using it. Connect the USB cable to the USB power adaptor, and then plug the end of the USB cable into the USB Port.

- ★ **Tip:** You can use USB charging when a wall outlet is not available. Data can be transferred while charging the device.
The efficiency of USB charging power varies significantly, and it may take a long time for charging to start and the device to start functioning.



First connect the USB cable to computer USB port, then to your phone. When charging is done, first disconnect the USB cable from your phone, then from the computer USB port.

First start-up

Learn how to get your new phone up and running.

Basic operations

- [Turn on the phone](#)

Press and hold a while of power key to turn on the phone. If the power is enough, the vibrator will vibrating then power on.

- [Turn off the phone](#)

Long press the power key until a menu will show. Choose "Power off" to turn off the phone.

- [Reboot the phone](#)

Option 1: Long press the power key until a menu will show. Choose "Reboot" to restart the phone.

Option 2: Long press the power key till 12 seconds to auto restart the phone.

- [Enable/disable Aeroplane mode](#)

Long press the power key until a menu will show. Choose "[Aeroplane mode](#)"[Enable/disable flight mode](#) .

- [Lock the screen](#)

Option 1: Press the power key to turn off the screen and lock it

Option 2: The screen will auto lock if you don't use the phone for a while.

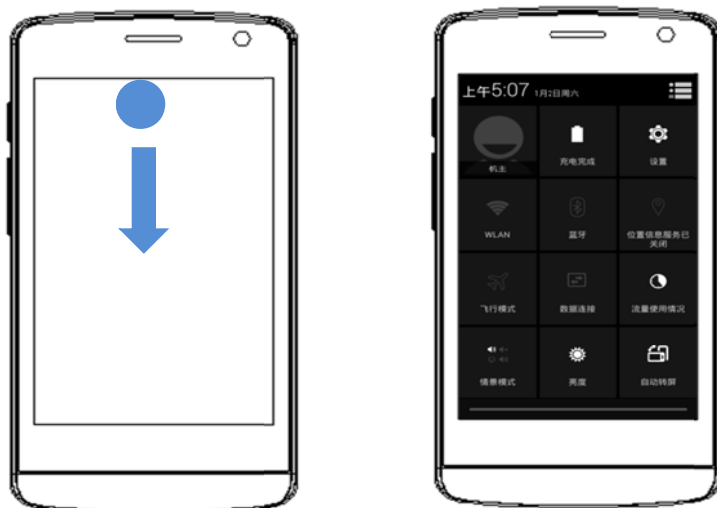
- [Unlock the screen](#)

Press the power key, and then slide to top for unlocking.

Toolbox operation

- [Enable the toolbox](#)

Swipe the touch panel from top to bottom, click the menu icon  then can enable the toolbox.



Touch operations

- [Touch:](#)

To act on items on the screen, such as application and settings icons, to type letters and symbols using the onscreen keyboard, or to press onscreen buttons, you simply touch them with your finger.

- Touch & hold:

Touch & hold an item on the screen by touching it and not lifting your finger until an action occurs.

- Drag:

Touch & hold an item for a moment and then, without lifting your finger, move your finger on the screen until you reach the target position. You drag items on the Home screen to reposition them and you drag to open the Notification panel.

- Swipe or slide:

To swipe or slide, you quickly move your finger across the surface of the screen, without pausing when you first touch (so you don't drag an item instead). For example, you slide the screen up or down to scroll a list, and in some Calendar views you swipe quickly across the screen to change the range of time visible.

- Pinch:

In some applications (Such as Maps and Gallery) you can zoom in and out by placing two fingers on the screen at once and pinching them together (to zoom out) or spreading them apart (to zoom in).

- Rotate the screen:

On most screens, the orientation of the screen rotates with the phone as you turn it from upright to its side and back again. You can turn this feature on and

Warnings and notes

IMPORTANT INFORMATION ON SAFE AND EFFICIENT OPERATION. Read this information before using your phone. For the safe and efficient operation of your phone, observe these guidelines:

Potentially explosive at atmospheres: Turn off your phone when you are in any areas with a potentially explosive atmosphere, such as fueling areas (gas or petrol stations, below deck on boats), storage facilities for fuel or chemicals, blasting areas and areas near electrical blasting caps, and areas where there are chemicals or particles (Such as metal powders, grains, and dust) in the air.

Interference to medical and personal Electronic Devices: Most but not all electronic equipment is shielded from RF signals and certain electronic equipment may not be shielded against the RF signals from your phone.

Audio Safety: This phone is capable of producing loud noises which may damage your hearing. When using the speaker phone feature, it is recommended that you place your phone at a safe distance from your ear.

Other Media Devices, hospitals: If you use any other personal medical device, consult the manufacture of your device to determine if it is adequately shielded from external RF energy. Your physician may be able to assist you in obtaining this information. Turn your phone OFF in health care facilities when any regulations posted in these areas instruct you to do so. Hospitals or health care facilities may be using equipment that could be sensitive to external RF energy.

Product statement on handling and use: You alone are responsible for how you use your phone and any consequences of its use. You must always switch off your phone wherever the use of a phone is prohibited. Use of your phone is subject to safety measures designed to protect users and their environment.

Always treat your phone and its accessories with care and keep it in a clean and dust-free place

- Do not expose your phone or its accessories to open flames or lit tobacco products.
- Do not expose your phone or its accessories to liquid, moisture, or high humidity.
- Do not drop, throw, or try to bend your phone or its accessories
- Do not use harsh chemicals, cleaning solvents, or aerosols to clean the device or its accessories.
- Do not attempt to disassemble your phone or its accessories; only authorized personnel must do so.
- Do not expose your phone or its accessories to extreme temperatures, minimum 32°F and maximum 113°F(0°C to 45°C).

Battery: Your phone includes an internal lithium-ion or lithium-ion polymer battery. Please note that use of certain data applications can result in heavy battery use and may require frequent battery charging. Any disposal of the phone or battery must comply with laws and regulations pertaining to lithium-ion or lithium-ion polymer batteries.

Faulty and damaged products: Do not attempt to disassemble the phone or its accessory. Only qualified personnel must service or repair the phone or its accessory. If your phone or its accessory has been submerged in water, Punctured, or subjected to a severe fall, do not

use it until you have taken it to be checked at an authorized service center.

FCC RF Exposure Information and Statement

The SAR limit of USA (FCC) is 1.6 W/kg averaged over one gram of tissue. Device types Smart Phone / (FCC ID: RQQHLLT-E40FSS) has also been tested against this SAR limit. SAR information on this and other pad can be viewed on - line at <http://www.fcc.gov/oet/ea/fccid/>. Please use the device FCC ID number for search. This device was tested for typical body-worn operations with the back of the handset kept 10cm from the body. To maintain compliance with FCC RF exposure requirements, use accessories that maintain a 10cm separation distance between the user's body and the back of the handset. The use of belt clips, holsters and similar accessories should not contain metallic components in its assembly. The use of accessories that do not satisfy these requirements may not comply with FCC RF exposure requirements, and should be avoided.

FCC Warning

This device complies with Part 15 of the FCC Rules. Operation is subject to the following two conditions:

(1) This device may not cause harmful interference, and (2) this device must accept any interference received, including interference that may cause undesired operation.

NOTE 1: This equipment has been tested and found to comply with the limits for a Class B digital device, pursuant to part 15 of the FCC Rules. These limits are designed to provide reasonable protection against harmful interference in a residential installation. This equipment generates, uses and can radiate radio frequency energy and, if not installed and used in accordance with the instructions, may cause harmful interference to radio communications. However, there is no guarantee that interference will not occur in a particular installation. If this equipment does cause harmful interference to radio or television reception, which can be determined by turning the equipment off and on, the user is encouraged to try to correct the interference by one or more of the following measures:

- Reorient or relocate the receiving antenna.
- Increase the separation between the equipment and receiver.
- Connect the equipment into an outlet on a circuit different from that to which the receiver is connected.
- Consult the dealer or an experienced radio/TV technician for help.

NOTE 2: Any changes or modifications to this unit not expressly approved by the party responsible for compliance could void the user's authority to operate the equipment.