



FCC ID:WQJ-IDCA-12X1

Operation Guidelines

Xpress CM100 Reader

1. Scope

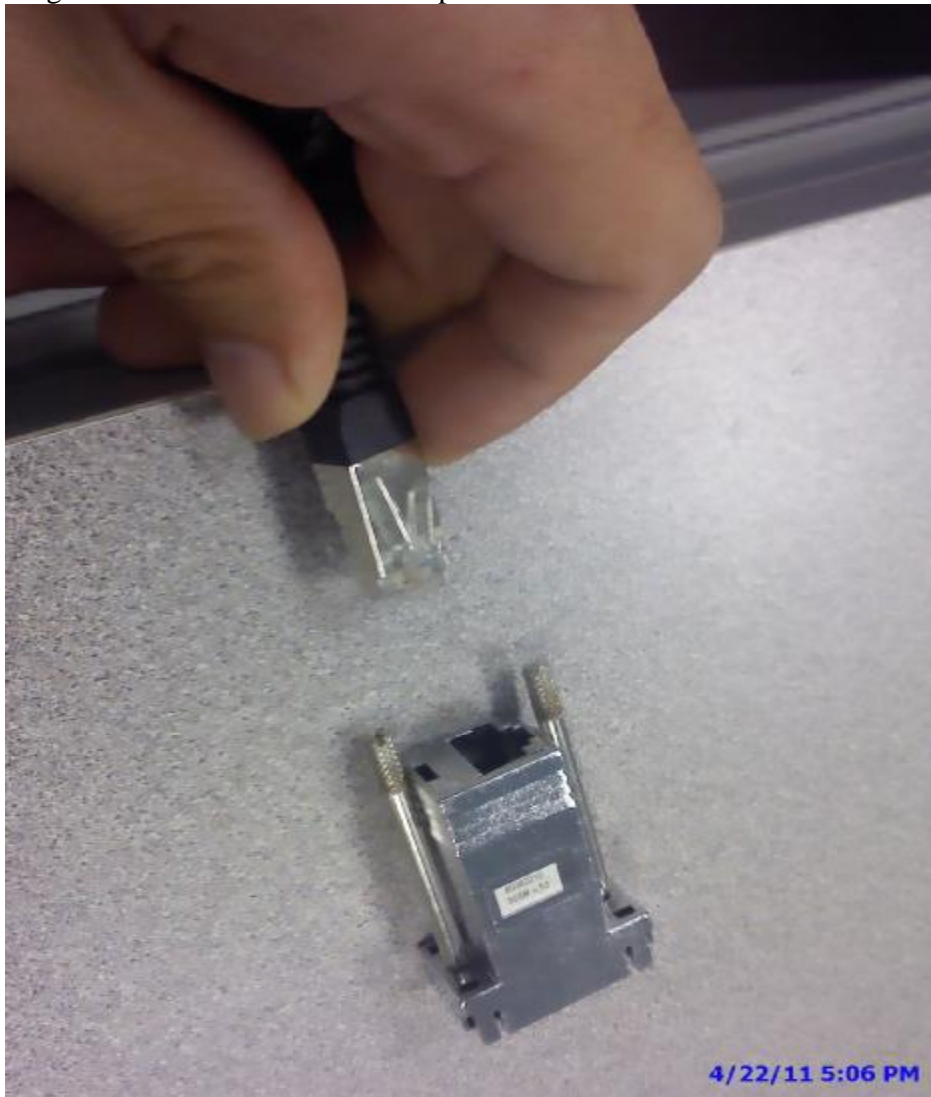
This document describes the operation guidelines of xpress reader for EMC test. This document answered four questions as below shows.

- 1) How to install Xpress Reader.
- 2) How to use Xpress Reader for EMC test

How to install Xpress Reader

please install the reader as these steps:

1. Plug Cable Connector to PC. Like picture 1A show.



2.

3. Plug Power connector (C) to RS232 Cable power connector(e),



4. Plug the AC-Adapter into AC100~240V ,then Xpress reader can work.

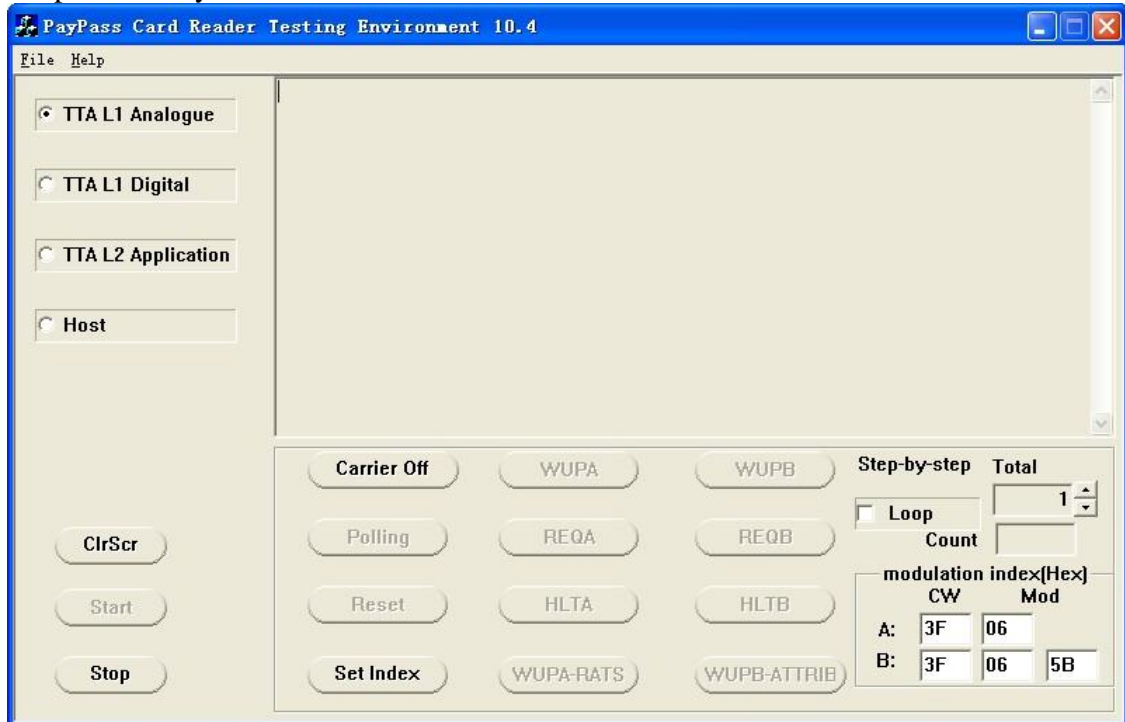


2. How to use Xpress Reader

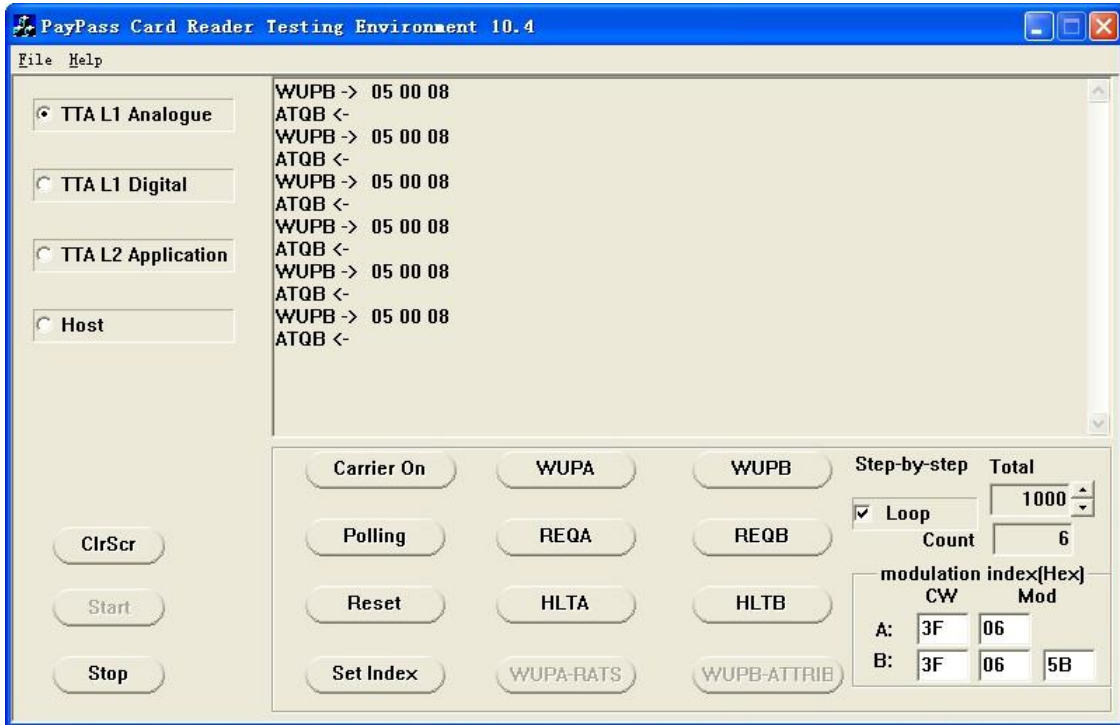
After power on Xpress Reader and reader was connect with PC, then user could read any Paypass Magstripe card or Visa MSD Card. The operate steps:

Now the Card in box is demo card which can be used for test.

1. open the PayPass Reader 10.4.exe



2.click the “Carrier ON ”,then the demo card can be tested.Put the card on Xpress reader.
 Change the “loop” number to 1000,then click the “WUPA” ,Data windows will show “04 00”
 If want to stop running ,you can click the “stop ”,if want to run continue ,then click The “start”button



FCC ID: WQJ-IDCA-12X1

FCC Compliance and Advisory Statement

This device complies with Part 15 of the FCC rules. Operation is subject to the following two conditions: (1) this device may not cause harmful interference, and (2) this device must accept any interference received, including interference that may cause undesired operation.

This equipment has been tested and found to comply with the limits for a Class B digital device, according to Part 15 of the FCC rules. These limits are designed to provide reasonable protection against harmful interference in a residential installation. This equipment generates, uses and can radiate radio frequency energy and if not installed and used in accordance with the instructions, may cause harmful interference to radio communications. However, there is no guarantee that interference will not occur in a particular installation. If this equipment does cause harmful interference to radio or television reception, which can be determined by turning the equipment off and on, the user is encouraged to try correct the interference by one or more of the following measures:

1. Reorient the receiving antenna.
2. Increase the separation between the equipment and receiver.
3. Connect the equipment into an outlet on a circuit different from that to which the receiver is connected.
4. Consult the dealer or an experienced radio/TV technician for help.

Any special accessories needed for compliance must be specified in the instruction manual.

Warning: A shielded-type power cord is required in order to meet FCC emission limits and also to prevent interference to the nearby radio and television reception. It is essential that only the supplied power cord be used. Use only shielded cables to connect I/O devices to this equipment.

CAUTION: Any changes or modifications not expressly approved by the party responsible for compliance could void your authority to operate the equipment.

IC statement This Class B digital apparatus complies with Canadian ICES-003. Cet appareil numérique de la classe B est conforme à la norme NMB-003 du Canada.