

User's Manual

STAR PDL100

Proximity Door Lock



Table of Contents

1. General	page 3
2. Identifying Supplied Parts	page 3
3. Specifications	page 3
4. Name of Each Part	page 4
5. Installation	page 4
6. Battery Insert	page 5
7. Operation	page 5
8. Alarm Sounds	page 6
9. Add/Delete Keytags	page 6
10. Initialization and Setup	page 7
11. Useful Information	page 7
12. Important Information	page 7
13. FCC Registration Information	page 8
14. Warranty and Service	page 8

1. General

We appreciate your purchasing of IDTECK's Proximity Door Lock which is based on the most advanced Radio Frequency Identification Technology. The STAR PDL100 is a Standalone Proximity Door Lock with built-in 2" Proximity reader and you can register up to 512 cardholders and it opens the door by contactless technology. The STAR PDL100 is designed to fit into any existing mechanical door lockset and it is powered by 8ea of "AA" size battery and it gives you easy installation and fast setup. Small and very light weight proximity keytags are encoded by IDTECK's unique encryption codes which prevent any duplication and keeps your home safe. The Passive type of proximity cards and tags are powered by Radio Frequency field generated from the exiting coil of the unit and built-in non-volatile memory of semiconductor chip performs a permanent life time.

The STAR PDL100 applies a "Master card" for easy operation to add or delete the cardholders and there is an "Initialize" button to erase the memory and initialize the unit and register the "Master card" and the keytags as it is the first time setup. Built-in 2 color LEDs and melody sound indicates the unit operation and it operates more than 30,000 times of door open without changing batteries. With STAR PDL100, keeps your home safe and better life with state of the art Proximity Door Lock from IDTECK.

2. Identifying Supplied Parts

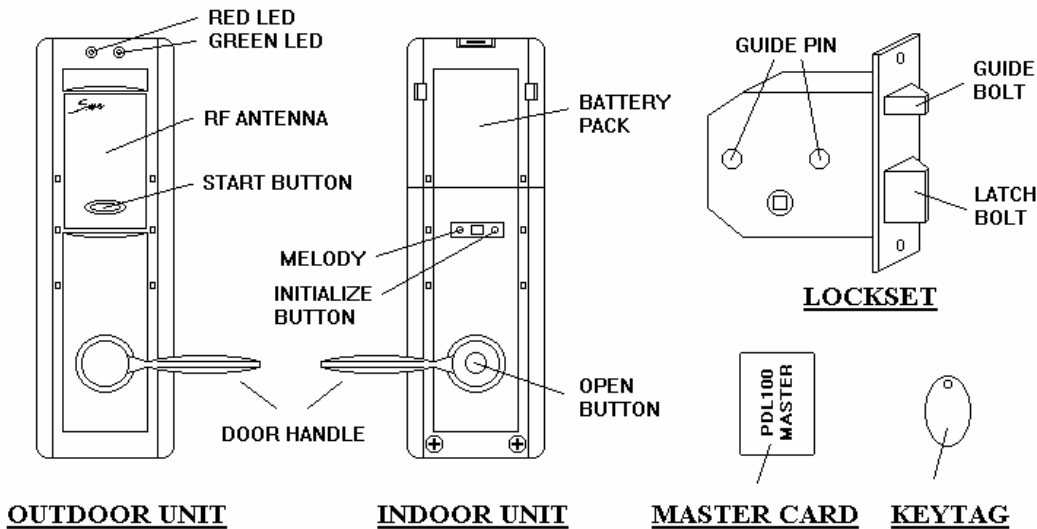
Please unpack and confirm the contents of the box.

- 1) Indoor Unit : 1 ea
- 2) Outdoor Unit : 1 ea
- 3) Lockset : 1 ea
- 4) Rubber Pads : 2 ea
- 5) Installation Parts : 1 set
- 6) Master Card : 1 ea, Keytags : 5ea
- 7) Battery Case : 1 ea
- 8) Battery ("AA" size) : 8 ea
- 9) Emergency Key : 3 ea
- 10) Installation Template : 1 ea
- 11) User's Manual : 1 copy

3. Specifications

Read Range	2" with IDK50 (enclosed Keytags)
Card Format	IDTECK 26bit Wiegand (16 Million codes)
Card Holders	512 cardholders
Door Open Time	5 sec. (Automatic Lock function)
Lockset	Motor Drive
LEDs / Melody sound	2 LEDs (red and green) / Piezo Buzzer
Power	8 ea of AA size Battery (DC 6V)
Door Openings	More than 30,000 times
Low Battery Alarm	Melody Alarm
Operating Environment	- 4°F ~ 140°F (-20°C ~ 60°C), 0~90% Humidity
Dimension (WxHxD)	3.2" x 10.3" x 7.1" (82mm x 262mm x 180mm)
Weight	6.18lb (2.8Kg, Lockset and Batteries Included)
Color	Gold or Silver

4. Name of Each Part

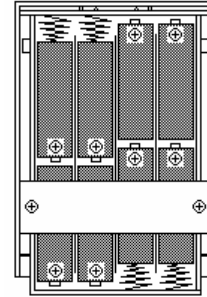


5. Installation

- 1) Remove mechanical lockset previously installed.
- 2) Place an obstacle like a chair between door and doorframe to prevent the door close.
- 3) Install the STAR PDL100 LOCKSET to the door. Place the GUIDE BOLT upward.
- 4) Insert two GUIDE BAR into the GUIDE PIN holes of the LOCKSET.
- 5) Place the Installation Template through the GUIDE PIN at the indoor side and mark the hole positions using center punch or pen, then place the Installation Template at the outdoor side and mark the hole positions at the outdoor side.
- 6) Remove the STAR PDL100 LOCKSET again.
- 7) Drill the holes of $\phi 16\text{mm}$, $\phi 32\text{mm}$ using hole cutter at the positions marked above paragraph 5).
- 8) Install the STAR PDL100 LOCKSET again and confirm that the GUIDE BOLT places upward and the directions of LATCH BOLT and GUIDE BOLT are correct.
- 9) Put one rubber pad to the outdoor unit and insert the two connector cables through the upper $\phi 32\text{mm}$ hole then push the outdoor unit into the door.
- 10) Put one rubber pad to the indoor unit and put two connectors into the main PCB of indoor unit, then position the two locking pins through the GUIDE PIN holes of LOCKSET then adjust the position of indoor/outdoor units until the two units are correctly positioned and fix the two units properly.
- 11) Fasten the indoor unit and outdoor unit then assemble the two units using 4 screws.
- 12) Confirm the direction of door handles and smooth operation of LOCKSET.
- 13) Do not close the door until you confirm the correct operation of the unit after you insert the battery pack to the unit.

6. Battery Insert

- 1) Insert 8 batteries("AA" size) into the battery pack as shown on the right figure.
- 2) Assemble the battery pack into the indoor unit.



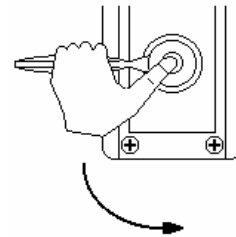
Notice

- 1) Only use alkaline batteries.
- 2) Make sure that the battery polarity is correct, otherwise it may cause malfunction of the unit.

7. Operation

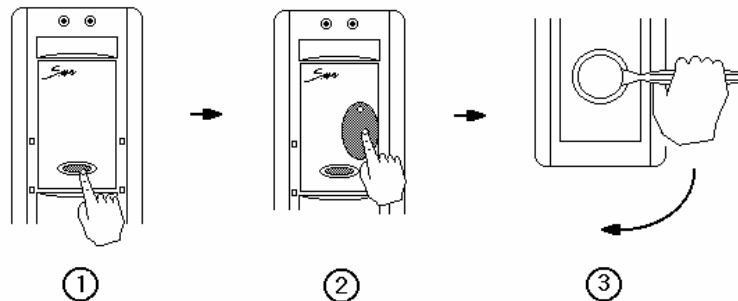
1) DOOR OPEN (Inside of door)

Turn the door handle while pressing the open button. Please make sure to take the keytag with you when you go out. STAR PDL100 has auto locking device built-in so the door will be locked when you close the door. When you open the door from inside, for 5 seconds of "beep" sound will be generated which remind you to take the keytag with you. When the low battery signal is detected, the low battery alarm sound will also generated. In this case, replace the battery immediately.



2) DOOR OPEN (Outside of door)

The "Master card" and the keytags enclosed in the box are already registered at the factory so you don't need to re-register the cards to this unit. Door open sequence is as follows.



- Push "Start" button, then red LED will be blinking with start beep sound.
- Present keytag to the unit then green LED will turn on with "Mi-Re-Do" sound.
- Turn the door handle to open the door. If you do not open the door for 5 seconds, the door will be locked automatically. In this case, try again from step .

8. Alarm Sounds

1) Take a Key Alarm

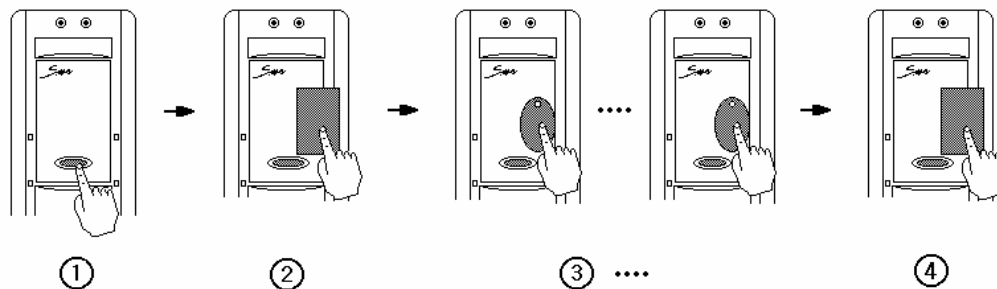
When you open the door from inside, STAR PDL100 is automatically locked as soon as the door closed. STAR PDL100 will generate alarm beeps for 5 seconds to remind you to take a keytag. When you hear alarm beeps, please check whether you take a keytag with you before the door closed.

2) Low Battery Alarm

When the battery voltage is low level, you may hear low battery alarm sound “Do-Re-Mi-Fa-Sol-La-Si-Do” 3 times when you push “Start” button from the outside or when you open the door from the inside. When you hear low battery alarm, replace the batteries immediately. Even you can operate more than 1,000 times from the low battery alarm, however you are requested to replace the batteries for safe operation.

9. Add / Delete Keytags

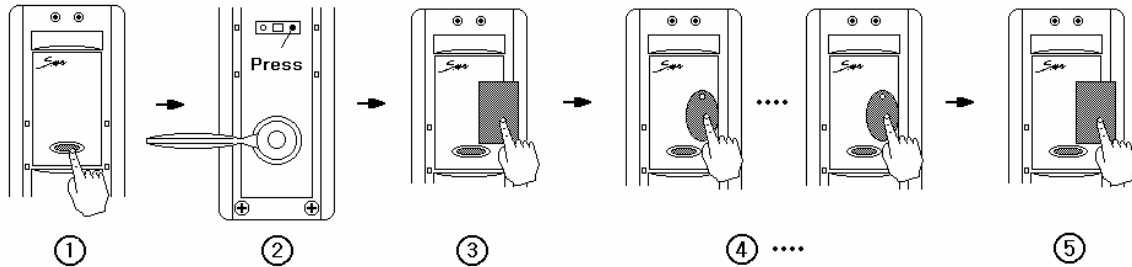
STAR PDL100 has non-volatile memory to register up to 512 keytags and each keytag has unique ID code and you can open the door with the keytag when you register the keytag into the device. 5 keytags enclosed in this box are already registered into the device therefore you do not need to register it again. If you need more keytags, you may purchase additional keytags from local distributors and add these keytags into the device for open the door.



- A. Push “Start” button, then red LED will be blinking with start beep sound.
- B. Present “Master card” then red/green LED will lit with “Re-Mi-Fa-Sol” sound.
- C. Present keytag(s) to add or to delete. When the keytag is added (registered) into the device then green LED will lit with “Do-Re-Mi-Do” sound. When the keytag is deleted from the device then red LED will lit with “Re-Do-Re-Do” sound. When the presented keytag’s ID is already existed in the device then this keytag will be deleted and the keytags’s ID is not existed in the device then this keytag will be added into the device. If you present the same keytag several times then STAR PDL100 will repeat add and delete function.
- D. Present “Master card” to finish add/delete keytags.

10. Initialization and Setup

Initialization is required to delete lost card or to register new master card and keytags. Initialization will erase all memory and setup the new “Master card” and keytags. Follow the steps for Initialization and register new “Master card” and new keytags.



- Push “Start” button, then red LED will be blinking with start beep sound.
- Push “Initialize” button of indoor unit. Red and green LED will lit with “Sol-Fa-Mi-Re-Do” sound. STAR PDL100 will erase all memory in the device.
- Present “Master card” then red/green LED will lit with “Re-Mi-Fa-Sol” sound.
- Present keytag to be registered then green LED will lit with “Do-Re-Mi-Do” sound. Present all keytag(s) to be registered one after one.
- Present “Master card” to finish Initialization and setup.

Notice

The first read card after pushing Initialize button will be registered as “Master card” and the “Master card” is to protect the device from unauthorized person therefore please keep “Master card” and User’s Manual together at the safe location. Do not take “Master card” for opening the door.

11. Useful Information

STAR PDL100 operates with Proximity Technology therefore you can use many different type of Proximity cards and tags. For more information, please contact your local distributor or customer service center of IDTECK (Website: www.idteck.com, Email: webmaster@idteck.com, Telephone: +82 2-659-0055 Seoul, Korea)

12. Important Information

STAR PDL100 has “Automatic lock device” therefore the door will be automatically locked when the door is closed. Please keep emergency key at safe location outside such as glove box of your car and take your keytag anytime. For more information, please contact your local distributor or customer service center of IDTECK (Website: www.idteck.com, Email: webmaster@idteck.com, Telephone: +82 2-659-0055 Seoul, Korea)

13. FCC Registration Information

FCC REQUIREMENTS PART 15

Caution: Any changes or modifications in construction of this device which are not expressly approved by the responsible for compliance could void the user's authority to operate the equipment.

NOTE: This device complies with **Part 15 of the FCC Rules**.

Operation is subject to the following two conditions;

1. This device may not cause harmful interface, and
2. This device must accept any interference received, including interference that may cause undesired operation.

This equipment has been tested and found to comply with the limits for a **Class B Digital Device**, pursuant to **Part 15 of the FCC Rules**. These limits are designed to this equipment generates, uses, and can radiate radio frequency energy and, if not installed and used in accordance with the instructions, may cause harmful interference to radio communications. However, there is no guarantee that interference will not occur in a particular installation. If this equipment does cause harmful interference to radio or television reception, which can be determined by turning the radio or television off and on, the user is encouraged to try to correct interference by one or more of the following measures.

1. Reorient or relocate the receiving antenna.
2. Increase the separation between the equipment and receiver.
3. Connect the equipment into an outlet on another circuit.
4. Consult the dealer or an experienced radio/TV technician for help.

14. Warranty and Service

For more information or request after sales service, please contact your local distributor or customer service center of IDTECK.

CUSTOMER SERVICE CENTER

ID TECK CO., LTD.
5F. Ace Techno-Tower Bldg.,
684-1 Deungchon-dong, Gangsuh-gu,
SEOUL 157-030, KOREA
Tel.: +82 (2) 659-0055
Fax.: +82 (2) 659-0086
E-mail: webmaster@idteck.com
Web-site: www.idteck.com