

PERSONAL RINGER

MODEL: BHDR619A

USER'S MANUAL

INTRODUCTION

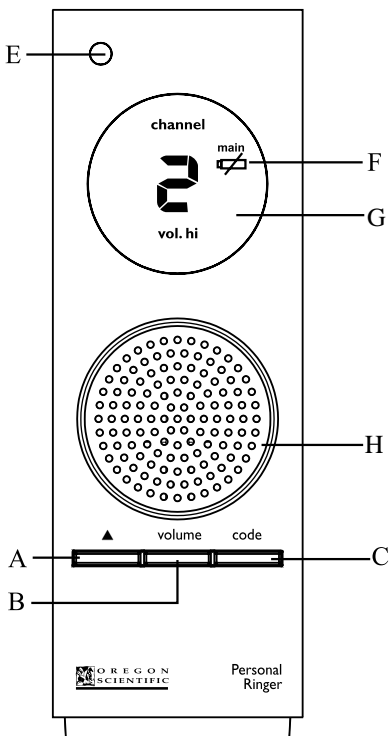
Congratulations on your purchasing the BHDR619A personal ringer.

Sleek and elegant, this model is designed for ease of use. With security coding system, interference to or from neighbouring Oregon Scientific wireless products can be avoided.

No wiring is required between the Ringer and the Bell Push (BHDR229A). Effective transmission range is up to 25 meters.

The standard package contains one Ringer and one Bell Push (BHDR229A). You can acquire additional bell push from an authorized dealer.

FEATURES & KEY CONFIGURATION : RINGER



A. [▲] BUTTON

Changes the security system code from 1 to 16

B. [VOLUME] BUTTON

Selects high or low volume for the door chime

C. [CODE] BUTTON

Press and hold to activate the security code setting mode

D. [RESET] BUTTON

Returns all settings to their original values

E. LED INDICATOR

Flashes when the door chime is sounding

F. LOW-BATTERY INDICATOR

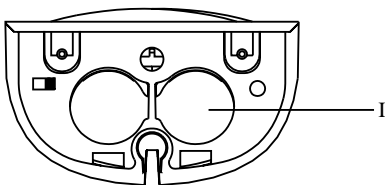
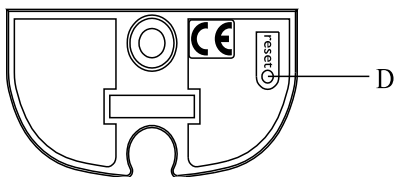
Lights up when the batteries of the Ringer or Bell Push are running low

G. LCD DISPLAY**H. SPEAKER**

Emits the selected door chime

I. BATTERY COMPARTMENT

Accommodates two AA-size (UM-3) 1.5V batteries



FEATURES & KEY CONFIGURATION: BELL PUSH

A. BELL BUTTON

Activates the door chime

B. DOOR CATCH

Press to open the battery compartment door

C. BATTERY COMPARTMENT

Accommodates three AAA-size (UM-4) 1.5V batteries

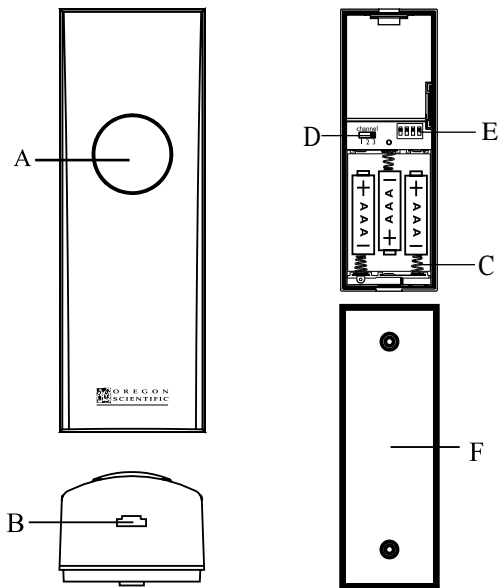
D. CHANNEL SLIDE SWITCH

Selects the channel designation for the Bell Push

E. SYSTEM CODE SWITCHES

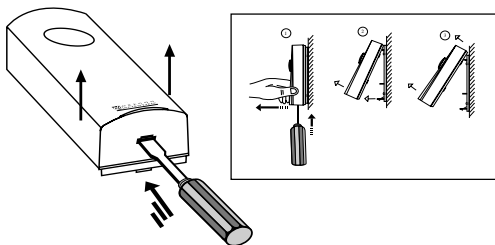
Sets the system code for the Bell Push

F. BATTERY COMPARTMENT DOOR

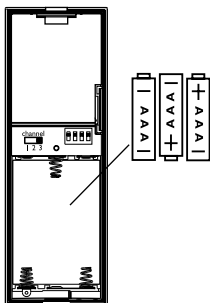


BATTERY INSTALLATION & SETTING UP: BELL PUSH

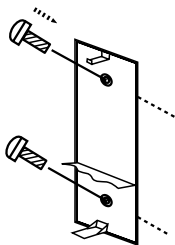
1. Press the recessed door catch with a screwdriver to open the compartment.



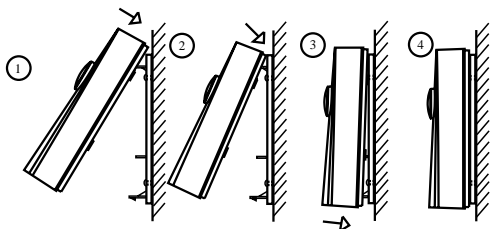
2. Insert three AAA-size (UM4) 1.5V batteries.



3. Mount the compartment door on a wall using the two pieces of screws provided.



4. Assemble the front unit onto the compartment door.



BATTERY INSTALLATION: RINGER

1. Remove the screw on the bottom of the unit.
2. Pull out the battery door.
3. Insert two AA-size (UM-3) 1.5V batteries.
4. Close the battery door .
5. Replace the screw.
6. Hold down [**RESET**] with a blunt stylus.

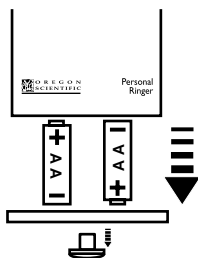
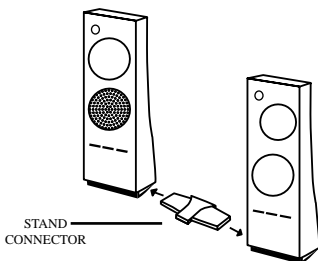


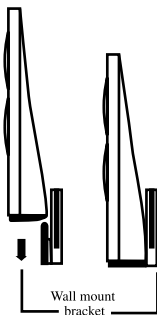
TABLE-STANDING OR WALL-MOUNTING

Table-standing:

Your unit comes with a stand connector for connecting it to other modular units in the same series.

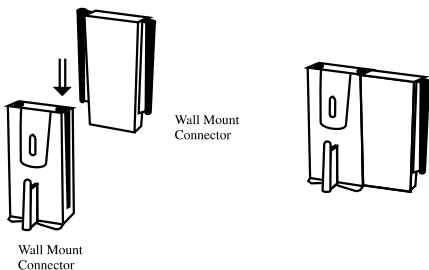


Wall-Mounting:

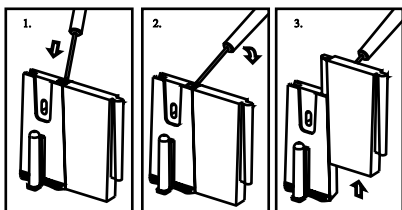


Connector:

Use wall-mount connector to align with other wall-mount bracket if necessary.



Assemble the front unit onto the compartment door on a wall using the two pieces of screws provide.



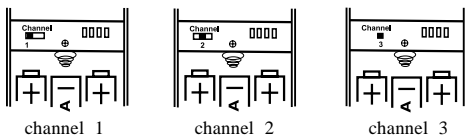
HOW TO SELECT THE DOOR CHIME

The door chime is selected on the channel slide switch on the bell push. There are three chime patterns: Ding Dong (channel 1), Ding Ding (channel 2) and West Minister (channel 3).

To select the channel,


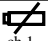
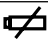

1. Open the battery compartment door of the bell push.
2. Slide the channel switch to the desired setting.
3. Replace the battery compartment door.

The channel selected will be displayed on the Ringer.



HOW TO READ THE LOW BATTERY INDICATOR

Replace the batteries when the low-battery indicator for the Ringer or bell push appears.

	Low battery indicator
main 	Main unit
ch.1 	Channel 1 bell push
ch. 2 	Channel 2 bell push
ch. 3 	Channel 3 bell push

HOW TO SET THE CHIME VOLUME

Press [**VOLUME**] on the main unit to select between high and low volume. The volume level will be displayed.

HOW TO SET THE SYSTEM CODE

This product uses a coding system to avoid interference among neighbouring Oregon Scientific wireless products. In the unlikely event that the unit rings without anyone of your bell push being used, it means another Oregon Scientific wireless product in the neighbourhood is using the same codes as your own. You should then change the security system code. The code set for the bell push and the Ringer must be identical before they can work properly together.

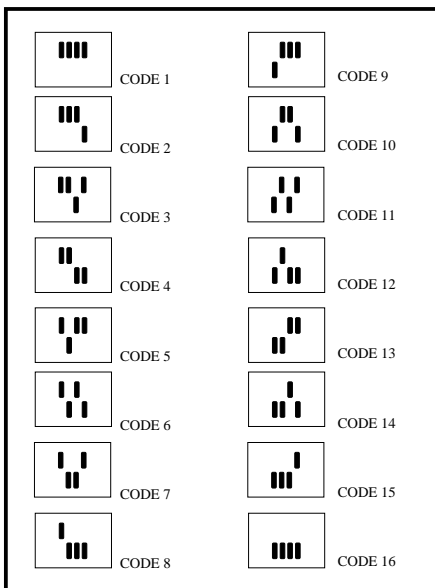
To set the code for the Doorbell,

1. Press and hold [**CODE**] for two seconds.
2. Use [**▲**] to enter the code. You can select from 1 to 16.
3. Press [**CODE**] to confirm and exit.

Once set, the Ringer will retain the system code even when the batteries are removed.

To set the code for the bell push,

1. Open the battery compartment door of the bell push.
2. Set the code on the system code switch as shown below. There are 16 combinations.
3. Replace the battery compartment door.



Note: These Oregon Scientific wireless models are compatible and will activate each other if the system codes are set to be the same. For example, if you install an additional Bell Push for your back door, make sure you adjust the system code of the additional Bell Push to be the same as your other Bell Push and your Ringer.

HOW TO USE THE PRODUCT

Once the Ringer and bell push are in place, pressing the bell button on the bell push will activate the door chime in the chime pattern selected. Holding on to the button will ring the bell continuously.

TRANSMISSION COLLISION

Signals from other household devices, such as home security systems and entry controls, may interfere with those of this product and cause temporarily reception failure. This is normal and does not affect the general performance of the product. The transmission and reception of signals will resume once the interference recedes.

THE RESET BUTTON

The RESET button is used to enhance synchronization of signals after battery replacement or when the unit is operating in an unfavorable way or malfunctioning. Use a blunt stylus to hold down the button. All settings will return to their original values.

PRECAUTIONS

This unit is engineered to give you years of satisfactory service if handled carefully.

1. Do not immerse the unit in water.
2. Do not clean the unit with abrasive or corrosive materials.

3. Do not subject the unit to snow or excessive force, shock, dust, temperature or humidity.
4. Do not tamper with the unit's internal components.
5. Do not mix new and old batteries or batteries of different specifications.
6. No rechargeable batteries should be used in this product. Only use the type of battery as specified.

SPECIFICATIONS

General

No. of system code combination	: 16
No. of channel	: 3
Channel 1 door chime	: Ding Dong
Channel 2 door chime	: Ding Ding
Channel 3 door chime	: West Minister
RF Transmission Range	: Maximum 25 meters
Transmission Frequency	: 433MHz

Power

Main Unit	: 2 pcs UM-3 or "AA" 1.5V battery
Bell push	: 3 pcs UM-4 or "AAA" 1.5V battery

Weight

Main Unit	: 164g (including batteries)
Bell push	: 72g (including batteries)

Dimensions

Main Unit (H x W x D)	: 167 x 57 x 32 (mm)
Bell push (H x H x D)	: 108 x 37 x 27 (mm)

NOTE ON COMPLIANCE

This device complies with Part 15 of the FCC Rules. Operation is subject to the following two conditions: (1) This device may not cause harmful interference, and (2) This device must accept any interference received, including interference that may cause undesired operations.

Warning: Changes or modifications to this unit not expressly approved by the party responsible for compliance could void the user's authority to operate the equipment.

FCC :

NOTE: This equipment has been tested and found to comply with the limits for a Class B digital device, pursuant to Part 15 of the FCC Rules. These limits are designed to provide reasonable protection against harmful interference in a residential installation. This equipment generates, uses and can radiate radio frequency energy and, if not installed and used in accordance with the instructions, may cause harmful interference to radio communications.

However, there is no guarantee that interference will not occur in a particular installation. If this equipment does cause harmful interference to radio or television reception, which can be determined by turning the equipment off and on, the user is encouraged to try to correct the interference by one or more of the following measures:

- Reorient or relocate the receiving antenna.
- Increase the separation between the equipment and receiver.

- Connect the equipment into an outlet on a circuit different from that to which the receiver is connected.
- Consult the dealer of an experienced radio/TV technician for help.

Company Name: Oregon Scientific, Inc.

Address: 19861 SW 95th Place, Tualatin, Oregon 97062, USA

Telephone Number: (503)-639-8883

Website address: www.oregonscientific.com.

Name and model number of the product: Personal ringer BHDR619A

CAUTION

- The content of this manual is subject to change without further notice.
- Due to printing limitation, the displays shown in this manual may differ from the actual display.
- The contents of this manual may not be reproduced without the permission of the manufacturer.

CUSTOMER ASSISTANCE

Should you require assistance regarding this product and its operation, please contact our customer care department at 800-853-8883 or via email at helpme@oscientific.com. Our customer care department is available 24-7-365.

WARRANTY

This product is warranted to be free of manufacturing defects for a period of 3 months from date of retail purchase. Defective product should be directed to the place of retail purchase for exchange.

Should this not be possible, contact our customer care department for assistance and a return material authorization. No returns may be made without a return authorization. Please retain your retail receipt as you may be asked to provide a copy of it for proof of date purchased.

This warranty does not cover product subjected to abuse, misuse, accidental damage or tampering.

Upon return of the defective product, Oregon Scientific will at its discretion, replace the product with either a new or a tested reconditioned product. Should the product be out of warranty, the consumer may purchase directly from Oregon Scientific a replacement at reasonable cost plus shipping and handling.