
Notice

Copyright

VIP Systems hold copyright of this manual, which is protected by the Copyright Act.

Therefore, without previous permission of VIP Systems, any part of this manual may not be copied in any way of machinery, electronics, or any method.

The contents of this manual could be changed without previous notice for a reason of trust, improvement of design and function, etc.

Manufacturing company does not guarantee loss regarding data. Therefore, take care of important data not to be lost, and always back up them.

Although this manual was written making assurance doubly sure, manufacturing company and supplier do not assume the responsibility for the result caused by an error, omitted contents of this manual.

Registered in Electromagnetic compatibility(Class B)

This product was registered in electromagnetic compatibility(Class B). you can use it safely at any place.

NOTE: This equipment has been tested and found to comply with the limits for a Class B digital device, pursuant to Part 15 of the FCC Rules. These limits are designed to provide reasonable protection against harmful interference in a residential installation. This equipment generates, uses and can radiate radio frequency energy and, if not installed and used in accordance with the instructions, may cause harmful interference to radio communications.

However, there is no guarantee that interference will not occur in a particular installation. If this equipment does cause harmful interference to radio or television reception, which can be determined by turning the equipment off and on, the user is encouraged to try to correct the interference by one or more of the following measures:

- - Reorient or relocate the receiving antenna.
- - Increase the separation between the equipment and receiver.
- - Connect the equipment into an outlet on a circuit different from that to which the receiver is connected.
- - Consult the dealer or an experienced radio/TV technician for help.

THIS DEVICE COMPLIES WITH PART 15 OF THE FCC RULES.

OPERATION IS SUBJECT TO THE FOLLOWING TWO CONDITIONS:

(1) THIS DEVICE MAY NOT CAUSE HARMFUL INTERFERENCE, AND

(2) THIS DEVICE MUST ACCEPT ANY INTERFERENCE RECEIVED,
INCLUDING INTERFERENCE THAT MAY CAUSE UNDESIRE OPERATION

THE MANUFACTURER IS NOT RESPONSIBLE FOR ANY RADIO OR TV INTERFERENCE CAUSED UNAUTHORIZED MODIFICATIONS TO THIS EQUIPMENT. SUCH MODIFICATIONS COULD VOID THE USER'S AUTHORITY TO OPERATE THE EQUIPMENT.

Suggestions

For right and safe set up and use of this product, please read this user's manual carefully in advance.

Safety device is already installed in this product to prevent user's injury, but pay regard to the following details for safe use.

Suggestions when installing

- Prevent injury or damage of product by installing on the safe place (on the firm and even surface)
- Install at a place of good ventilation for preventing over moisture and overheating.
- Install away from magnetic objects.
- Confirm where voltage used is appropriate when connecting to power source.
- For AC adapter and power source cord, use belongings wrapped up with the product, and do not put heavy stuff on them.
- To prevent danger of an electric shock and fire, do not use damaged consent or the one that is insufficient for standard.
- If you connect power source cord to extended cord, make sure that electric current of every equipments connected to extended cord is less than standard value stated on extended cord.

Suggestions for use

- In case peripheral instruments are connected to this product, turn on peripheral instruments first when approving power source, and turn off this product first when cutting off power source to prevent damage of product.
- Make sure that any liquid should not get in to this product. It may cause damage of product, fire, or electric shock.
- When cleaning of this product, separate AC adapter before wiping, and never use liquid or spray detergent. Wipe it using paper or cloth wetted with exclusive detergent for computers.
- When the product is not used for a long time, separate it from the main power source consent to prevent damage caused by excessive electric current.
- To pull out power source cord, grip plug firmly rather than pulling the line.
- Do not leave this product at a place where ventilation is bad, and temperature is over 60°C (140°F), which may damage the product.

-
- Maximum temperature at which this product can operate normally is 35℃, so keep it away from electric range including heater.
 - Pay attention not to damage hard disk data built in this product, and please always back up important data for preventing the worst case.
 - Do not take this product to pieces at your will. For safety, only qualified service staff can dismantle repair and convert.
 - If the following situations happen, please inquire of service staff about those matters for inspections.
 - ※ In case liquid gets into the product, or it is exposed to moisture.
 - ※ In case a product does not operate well, or you can not operate it according to user's manual.
 - ※ In case product is damaged or there is distinct damage by dropping.

Contents

Notice	1
Suggestions	2
Contents	4
Chapter 1 Introduction	5
Undo a product package	5
Chapter 2 Look into computer	7
computer rear side(connecting part of connectors)	8
Chapter 3 Computer setting change	9
BIOS setup utility	9
OSD(On Screen Display) program	13
System upgrade	14
Chapter 4 Reinstalling computer	15
Reinstalling windows XP	15
Installing TV driver, program	16
Installing touch screen program and setup	28
Chapter 5 Using computer	28
Using windows XP Home Edition	28
TV User's Guide	30

Chapter 1 Introduction

Congraturation on your purchase of eSTATION ALL-In-On PC.

Characteristics of product

Estation is one body PC of 15 inch TFT-LCD monitor and desktop PC. And it harmonizes with any working environment due to ultra light weight(5.7 Kg) and polished design of space-saving type. Furthermore, in case of separating stand and applying exclusive adapter, you can use it as wall mounted.

Because necessary main function is built in the body so that anyone can use easily by connecting power source cord. It adjusts to various working environment of user, and supports not only the existing all kinds of peripheral instruments, but also PCMCIA card slot, USB port, IEEE1304 adapter, TV tuner/capture function(option), etc.

To rebuilt, the newest peripheral instruments can be used through built in network adapter, wire networking is possible without installing additional devices. And it supports to be able to operate wireless networking by using PCMCIA wireless lan card, which improves office working environment, maintenance, and mobility.

Because it supports Window XP, the latest operation system of Microsoft, more safe and faster computing environment is provided.

By adopting 15 inch TFT-LCD monitor, harmful electron is wave and electricity used is minimized, and it prevents eye fatigue even while using for the long time.

Undo product package

This product is safely wrapped up in firm cardboard paper box .
The following goods should be included in the box.

- 15 inch TFT-LCD monitor one body type PC main body
- network adapter(RealTek RTL8130C Ethernet-based 10/100Mbps, basic built in)
- PCMCIA(PC) card slot(Type II/III support, basic built in)
- Combined use of 110/220V AC/DC adapter
- AC power source cord
- Combo cable(for 2 serial communication devices and printer connection)
- CD for installing Microsoft operating system and user's manual
- eSTATION user's manual(this pamphlet)
- Touch screen CD, TV Install program
- TV tuner(main body built in type)
- adapter for wall tapestry

Basic optional equipment

It supports USB booting function through USB device. The following devices support this function.

- USB floppy disk device
 - manufacturing company : YEDATA
 - model name : YD-8U10
- USB CD-ROM or CD-R/RW device
 - manufacturing company: Sarotech, Corp.(<http://www.sarotech.com>)
 - model name: NCD-241IU/NCR-882U2

Other peripheral equipment

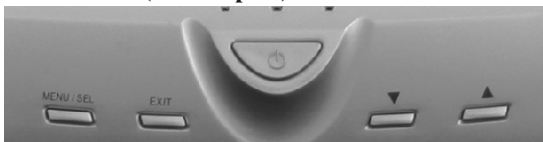
This product supports the following other peripheral equipment at the same time.

- Printer(LPT1)
- Serial communication devices(COM1)
- USB devices(USB 1.1 support)
- IEEE 1394 device
- PCMCIA(PC) card
- External speaker
- External mike
- External A/V device
- Touch screen

Chapter 2 Look into computer

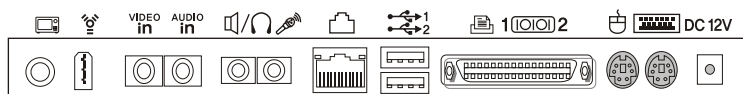
This chapter briefly explains about the exterior of computer, all kinds of buttons, LED display, and additional linking device.

Computer front side(control part)



- Power button
 - Power: it turns on/off the power source of computer(TFT-LCD monitor and body)
- Control button for monitor OSD(ON Screen Display) control
 - MENU: it is used to end or call main menu, and to end after saving current control valve on control screen of each relevant item.
 - SEL: it is used to select appropriate item on main menu/sub menu screen.
 - Up/Down: it is used to move for selecting appropriate item on main menu/sub menu screen, or to move to desired control valve from control screen of the selected item.
- LED indicator light
 - ACTIVE: it indicates data being transmitted and received through network line.
 - HDD: it indicates computer is recognizing HDD.
 - POWER: it indicates power is authorized on computer.

Computer rear side(connecting part of connectors)



Icon	Linking device
	Link antenna cable for TV
	IEEE 1394
VIDEO in	Link video input terminal of the exterior AV device
AUDIO in	Link video input terminal of the exterior AV device
	Link the exterior speaker device or headphone
	Link the exterior mike device
	Link 10/100 Mbps ethernet(LAN) cable
	Link USB device(possible to link 2 at the same time)
	Link combo cable (2 serial/LPT 1) it does not support com port due to use of touch screen
	PS/2 mouse link
	PS/2 keyboard link
DC 12V	AC/DC adapter link

Chapter 3 Computer setting change

This chapter shows how to change to be suited for use r environment in brief by using BIOS set up utility th an can change environment of system and OSD/(On Screen Display) that can change screen set ting of LCD monitor.

In addition. it explains about system upgrade.

BIOS set up utility

For this product, BIOS based on the newe st Phoenix BIOS 4.0 version of Phoen ix Technology, Inc. is applied, and for each enviro nment variable, system environment value which is the best suite d to this product is applied as def ault.

Furthermore, because it provides BIOS set up utility that use rs can change system environment at their will, users can change sy stem environment variable for their environment. In particular, it is used when ch anging booting order, setting password, etc. or adding new device, But, beware that if you set BIO S set up wrongly, system error could happen.

[Reference]

BIOS set up is an operation that sets up appropria tely and stores hardware constituent content of system. Set up conte nts is saved CMOS RAM within system, so it is stored by the inside batter y even when power get turn ed off.

How to change BIOS setting

It explains shortly regarding how to change set up by using BIOS set up utility.

1. Turn on your computer.
2. If booting screen appe ars, press <F2> button to operate BIOS set up utili ty. IF you press <F2> button too late at this time , window is booted, so press < F2> button again restarting com puter.

PhoenixBIOS set up utility provides 5 menus.

PhoenixBIOS Setup Utility				
Main	Advanced	Power	Boot	Exit
System Time			[09:43:29]	Item Specific Help <Tab>, <Shift-Tab>, or <Enter> selects fields
System Date			[03/16/2002]	
Legacy Diskette A :			[Disabled]	
Primary Master			[FUJITSU MHK2060AT]	
Primary Slave			[None]	
Secondary Master			[None]	
Secondary Slave			[None]	
System Memory			640 KB	
Extended Menory			129024 KB	
F1 Help ↑ ↓ Select Item - / + Change Values F9 Setup Defaults Esc Exit ← → Select Menu Enter Select ► Sub-Menu F10 Save and Exit				

PhoenixBIOS set up utility provides 5 menus.

Menu	Explanation of Menu
Main menu	You can see the basic spec of computer or change set up.
Advanced menu	You can set up regarding main chipset, peripheral, etc.
Power menu	You can set up regarding power mode.
Boot menu	You can set up changing booting order.
Exit menu	You can set up regarding set up exit.

4. Change setup using keyboard.

Each key and its function of keyboard that is used to change setup are as follows.

Function	How to use keyboard
To use help	Press <F1> key.
To move menu	Use left and right arrow keys
To move item	Use up and down arrow keys
To change value of item	Use + and - keys. For help to each item, please refer to help appearing on the right side of screen.
To enter into submenu	Press <enter> key. Item with ► mark indicates there is submenu.
To move from submenu to upper menu	Press <Esc> key.
To restore initial value which set in factory.	Press <F9> key.
To end save the changed value.	Press <F10> key.

5. To end setup saving every changed contents in CMOS RAM, press <F10> key. Then system will be rebooted with the changed contents.

How to boot a system with USB device.

This product is able to boot a system by using USB FDD and USB CD-ROM drive in 'basic optional equipment' of Chapter 1 Introduction.

1. Execute PhoenixBIOS set up utility.
2. Move from PhoenixBIOS set up utility main menu screen to advanced menu.
3. After a while, PhoenixBIOS set up utility main menu screen will appear as follows.

3. Move to Advanced Chipset Control item from Advanced menu, and press <Enter> key, that enter into Advanced chipset Control sub menu screen.
4. Move to from Advanced chipset Control sub menu screen to Legacy USB support item, and change the value as [Enabled].

PhoenixBIOS Setup Utility		
Advanced		
Advance Chipset Control		Item Specific Help
Video boot type	[Onboard Video 1 MB]	Enable support for Legacy Universal Serial Bus
Video BIOS Update	[Enabled]	
Video BIOS	[Default VB]	
Enable memory gep :	[Disabled]	
Enable CD hole	[Disabled]	
Frequency Ratio	[2X]	
Legacy USE Support [Enabled]		
F1 Help ↑ ↓ Select Item - / + Change Values F9 Setup Defaults Esc Exit ← → Select Menu Enter Select ► Sub-Menu F10 Save and Exit		

5. To move from Advanced chipset Control sub menu to the upper level, Advanced menu, press <Esc> key.
6. After moving from Advanced menu to Boot menu, in case of booting as USB FDD in booting order, change for Removable Devices to be placed at top level, and in case of booting as USB CD-ROM, change for CD-ROM Drive to be placed at top level.
7. To end set up after saving changed contents in CMOS RAM, press <F10> key. Then, system is booted with USB device which system is connected.

OSD(On Screen Display) program

For LCD monitor of this product, 15 inch TFT-LCD smart panel is applied, and it also provides standard OSD program for user to be able to change screen setting

[Reference]

OSD program means screen control program of monitor, and user can control with their desired value about the following items.

- Brightness control
- Contrast
- Position control ; H-Position / V-Position / Phase / Clock
- Auto-Adjustment
- Language select ; English / French / Deutsch / Italian / Spanish
- Color control
- OSD Adjust ; Display Position / Display Time
- Information ; Resolution, Horizontal & Vertical frequencies

How to operate OSD program

It explains briefly about how to operate OSD program.

1. With computer turned on, press <MENU> key on control part of computer in front side.
2. When OSD main menu screen appears, move to the icon indicating items that you want to control by using <up(▲)> / <down(▼)> key, and then press <SEL> key.
3. In case there is sub menu in the selected item, move to the relevant item by using <up(▲)> / <down(▼)> key, and then press <SEL> key.
4. If the control screen regarding the relevant item appears, change it into desired value by using <up(▲)> / <down(▼)> key, and then press <MENU> key. Then the relevant item is saved as the changed value, and returned to OSD menu(main or sub menu) screen.
5. When control is completed, press <MENU> key on OSD main menu screen to end OSD program.

System upgrade

Hardware upgrade

This product does not guarantee in case that user personally upgrade a system for user safety and normal operation of system.

If you take a computer to pieces at random, computer could be damaged a lot, and there is danger of electric shock.

Therefore, if you would like to install new TV tuner, or upgrade CPU, hard disk or memory, please make inquiries of ESTATION center.

Software upgrade

The newest version of each manufacturing company is installed regarding basic driver and application program when shipping from factory. However, because each manufacturing company continues to present improved version for customers, please visit the following site regularly about main software installed previously to this product so you can upgrade with the newest version.

- Microsoft Corporation Windows XP Home Edition.
- 810E chipset software installation utility, video driver, and capacity improving utility of Intel Corporation.

[Notice]

In case of installing driver or utility using eSTATION rebooting of system is necessary in most cases. In case of rebooting of system, please boot with Master CD taken out to prevent booting with Master CD.

After installing the above every driver and program, confirm whether each device is working normally by selecting 'device manager' on [hardware] tap screen of 'system registration information' which appears by clicking [start] - [control panel] - [capacity and maintenance management] - [system] to confirm the existence of abnormal condition. If yellow exclamation mark is seen in front of device name, or device name is not appeared, it means device is not working normally, or device is not installed properly. In these cases, you should update driver or install again regarding the device.

Chapter 4 Reinstall Windows XP

1. Link USB CD-ROM drive to computer and put Windows XP Home Edition installation CD into CD-ROM drive. Then "Windows Setup" screen is appeared when starting computer, and it starts to install automatically.
2. According to direction on screen, continue to install Windows XP Home Edition.

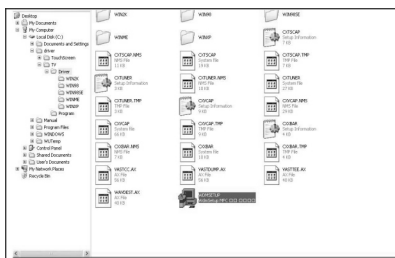
Install according to the following step by selecting each driver and application program in WinXP item on automatic operation screen.

- Install video driver(requisite)
- Install sound driver(option)
- Install lan driver(option)
- Install TV driver and application program(requisite)
- Touch screen drive(requisite)

Install TV DRIVER&PROGRAM

1. First, operate TV DRIVER in MASTER CD.

A) select setup



B) select NEXT



C) select NEXT



D) select NEXT



*Install Tach Screen Driver Program

E) proceed to the next procedure after RE-BUTTING

F) select Next after choosing Install from a list or specific location {Advanced}

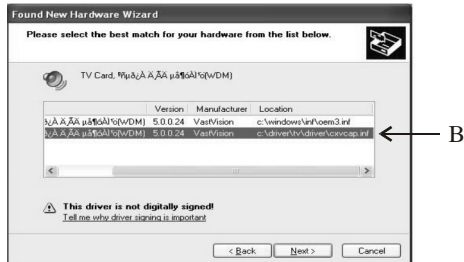


G) Select Next



H) According to frequency of TV program installment, driver could happen several times as shown in the figure.

After selecting the last driver "B", please choose NEXT.



I) Select Continue Anyway



J) select FINISH



K) RE-BUTTING after 4 times repetitive operation to figure No.H-J.

L) After confirming whether error exists in device manager of SYSTEM registration information of my computer as TV driver is finished. select TV PROGRAM POWER VCR III/PVCR3_2001F for automatic installation.

M) After installing TV Program, install INDEO Program in order.

N) As TV Program installation is finished. refer to chapter Use TV program for setting.

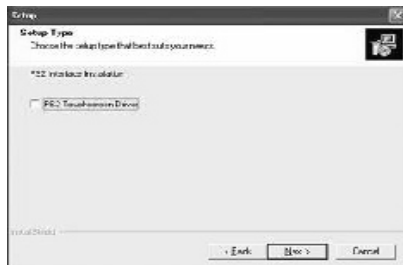
Installing touch screen program and setup

Follow these steps to install **TouchKit**.

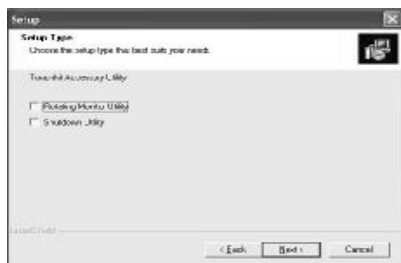
1. Put the **TouchKit** CD to CD-ROM.
2. Open the "Win2000_XP" directory.
3. Double click the Setup.exe, then windows starts to run the installation program.
4. Just click [**Next>**] button to continue installation.



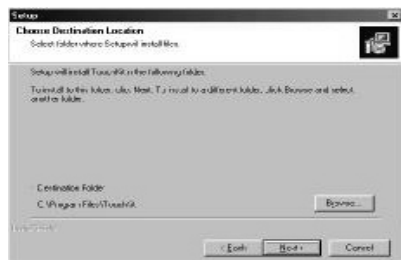
5. Check the check box if PS/2 touch controller is to be installed. The default setting is unchecked. Then Press [**Next>**] to continue installation.



6. Choose the setup type that best suits your needs. There are two touchKit accessory utilities for choosing, "Rotation Monitor Utility" and "Shutdown Utility". Users can install the utility they want by checking the box. Then Press [**Next>**] to continue installation.



7. Select the appropriate folder where set-up files will be installed. Then press [Next>] to continue installation.



8. Then type in the name of program folder for TouchKit or press [Next>] to continue. There will be a default name for it.



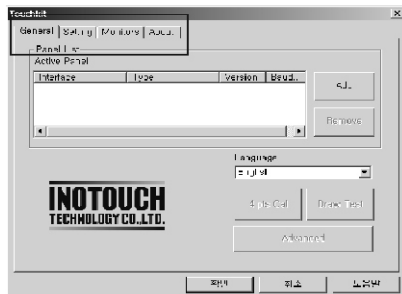
During Installation, the Touchkit controller driver will be installed automatically. windows XP will prompt a warning message before driver certificated. Now, Press [continue>] to continue installation.



Configuration Utility and Right Button Emulator

There are three property pages in TouchKit utility, and they are **General**, **Setting** and **About**. Each property page contains different functions for users to do the adjustments. Therefore, users can easily manage all the TouchKit controllers through TouchKit Utility.

Functional Group Tap

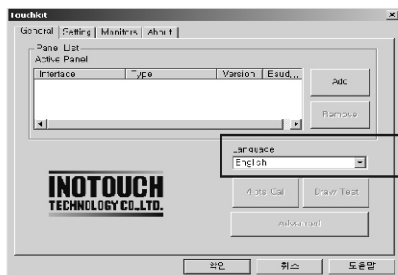


General

General property page contains the functions of **language selection**, **devices add/remove**, **4 points calibration**, **Draw test** and **advanced**. Furthermore, there are two functions in the **Advanced**, they are **25 points calibration** and the support of **multiple monitors**.

<Language>

TouchKit supports multi-language user interface. User could select native language that is compatible to operation system support. For example, if the operation system is a traditional Chinese version, user could see the normal display words under the traditional Chinese and English mode. There are eight different languages, **English**, **Traditional Chinese**, **Simplified Chinese**, **French**, **Spanish**, **German**, **Japanese** and **Korean**, supported in this feature of TouchKit.



Note to select the compatible language first.

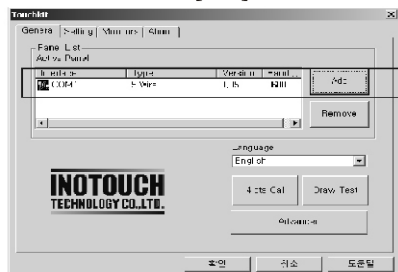
Select the compatible language first or user may not see the normal display of each button.

<Add> & <Remove>

Please check the touch panel devices (including its controller) are equipped well, then click [Add] button to add all of those RS-232 and PS/2 components to the <Panel List> dialogue box.

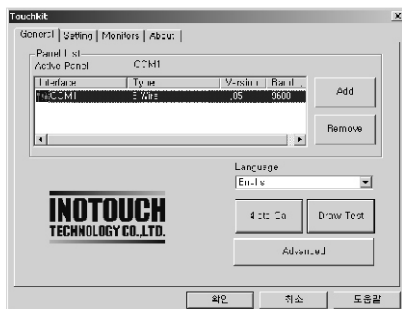


There is one devices found. Press [Yes] to continue.

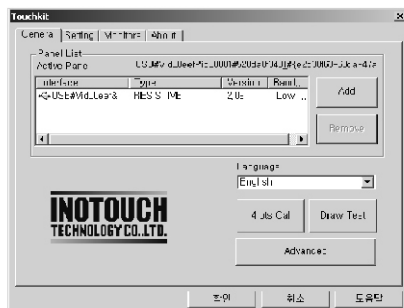


Device is found in COM1

The controller is displayed on the Panel List box. user can get the information of interface - type - firmware version and baud rate for each controller. Select one device after import more than one device at the panel list window. the one selected will activate the panel, and remember to do the calibration before starting to use touch panel.



There are three buttons, <4pts Cal> <Draw Test> <Advanced>, at the lower section of the <General> property page.



<4pts Cal>

Correct 4 point locations on screen with the panel. Press [4pts Cal], screen displays as follows.

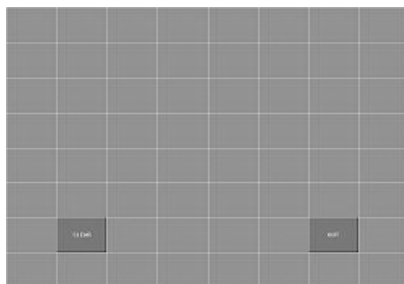


Touch the blinking symbol on panel until beep or stop blinking.

<Draw Test>

Test the drawing position related to the display screen on panel.

Click on the [Draw Test] button. There will be a squared blue display showing.

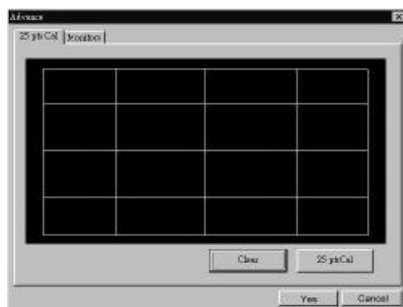


In drawing test window, user can click <Clear> button to clear the window. Also, User can Click <Quit> or press mouse right button to quit from the drawing test.

If no "touch action" happen within minutes, it will quit from the draw test window automatically. In drawing test window, user can verify the panel linearity, calibration capability, and drawing line quality.

<Advanced>

Touchkit provide more accuracy 25 points calibration for touch sensor. In addition, Touchkit supports multiple monitors configuration in Windows 98/ME/2000/XP. Also, touchkit provide controller setting for capacitive touch sensor. If the capacitive controller is selected, a capacitive setting property page appears on the advanced sheet. In general case, it does not need to do 25 points calibration other then bad linearity sensor.



Press [**Clear**] to clear the previous calibration records.



Press [**Yes**] to clear previous records.
The record will become default record.

Press [**25ptCal**] to do 25 points calibration. Correct 25 point locations on screen with the panel.

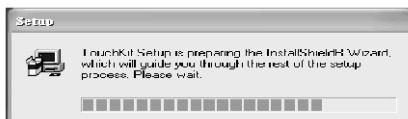
For Windows XP / XP Tablet PC Edition

Follow these steps to uninstall *TouchKit*.

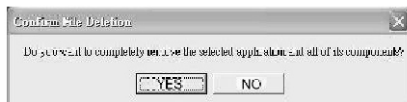
1. Go to **Start / All programs / TouchKit / Uninstall**, and execute it.



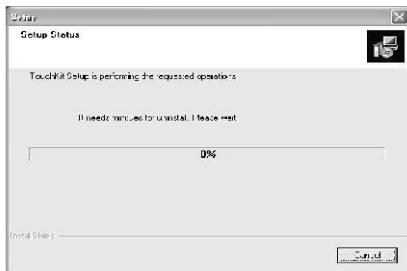
2. TouchKit setup dialog appears, and prepares to uninstall.



3. Confirm dialog, press [YES] to start un-installation; [NO] to cancel un-installation.

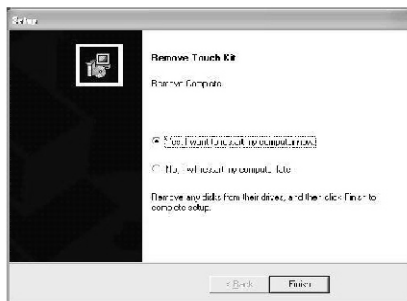


4. Start to uninstall TouchKit.



If user does not want to uninstall TouchKit at this moment, press **[Cancel]** to terminate the uninstall process.

-
5. touchKit driver will not be unloaded until system re-boot. Press [Yes>] to re-boot immediately or [No>] to re-boot later.



Use Windows XP Home Edition





to use application program, like Windows XP Home Edition that Microsoft provides basically and for basic use of windows XP Home Edition, please refer

to the manual(brochure) of Microsoft Windows XP Home Edition and Microsoft Windows XP Home Edition help and support center.







For referring to the help and support center, click your necessary items on a guide screen appearing by clicking [start]-[help and support] on Window Wallpaper.

TV User's Guide




Main Controls



Icon	Description
	Turns PowerVCR off
	Minimizes PowerVCR
	Accesses Online Help
	About PowerVCR

Video Display

Icon	Description
 	Switches between large and small screen mode
 	Activates the Always On Top function (off/on)
	Maximizes video display to full screen
	Enters the surfing mode for previewing channels simultaneously

Channel Surfing





Icon	Description
	Cancels surfing mode
	Enables auto page mode
	Scans channels



Icon	Description
	Goes to next page
	Returns to previous page

Control Wheel

Icon	Description
	Records video content
	Plays video files
	Fast forwards video files
	Rewinds video files
	Pauses video files
	Stops video files

Display Area






Icon	Description
	Displays replay indicator status
	Displays current channel
	Displays time remaining until next scheduled task
	Displays current file size

Icon	Description
	Displays total time for current file
	Displays hard disk space available





Modes

1. Live/Digital Recorder

In this mode, you may watch live video content and record video content.

Icon	Description
	Configures PowerVCR's System Settings
	Captures still images during playback or from TV
	Enables the Time-shifting playback feature
	Shows/hides the TV tuner control
	Controls playback volume

TV Tuner Control

Icon	Description
	Goes to next channel
	Returns to previous channel
	Auto scans for available channels
	Returns to the last channel viewed

2. Instant TV Replay

In this replay mode, you may enjoy live television, or skip commercials. The default video replay limit is

motion, instantly replay or allowed here. The

Please refer to the "Control Wheel" on page 17 for information on navigating in the Instant TV Replay mode.

Note: *There is no Stop function in the Replay mode.*

3. PowerDVD





In this mode, you may enjoy DVD movie titles with the industry's most advanced DVD software player.

To start PowerDVD, click the PowerDVD mode. PowerVCR will automatically switch to PowerDVD with only the Master panel remaining. Afterwards, you may turn off PowerDVD or simply click on Live/Digital Recorder in the Master panel to return to PowerVCR.

Please refer to the PowerDVD User's Guide for more information on operating PowerDVD.



4. File Player

In this mode, you may play existing video files. There are two types of files: MPEG video files and playlist files. Playlist video files contain the description of the video file(s) and if greater than one, are played in its original playback sequence.

Icon	Description
	Opens files for playback
	Navigates during playback by advancing or reversing
	Steps left during pause or stop mode
	Steps right during pause or stop mode






5. Recording Scheduler

In this mode, you may schedule record times and its associated channel. Set the automatic recording frequency to record serial programs.

Icon	Description
	Scheduling Wizard that guides you through the scheduling process
	Deletes scheduled tasks













6. File Converter

In this mode, you may convert AVI files to MPEG files according to your specified recording profile or you may extract DAT files from video CDs to MPEG-1 files for further editing.

Icon	Description
	Opens files for converting
	Converts selected files
	Converts all files
	Deletes conversion tasks
	Shows PowerVCR





7. Video Trimmer









In this mode, you may choose to cut and splice video clip segments or merge clips into a new video file.

Icon	Description
	Opens files for editing/trimming
	The start trimming position
	The end trimming position
	Step left trim
	Step right trim
	Edits (trims) selected files
	Edits all selected items (merge)
	Adds next segment of current tape as a new clip
	Goes up to previous task
	Goes down to next task
	Deletes task
	Shows PowerVCR

8. DV Tape Transcoder

In this mode, you may choose to cut and convert DV video clip segments into new video files.

Icon	Description
	Adds a new task
	The start trimming position
	The end trimming position
	Step left trim

Icon	Description
	Step right trim
	Transcodes (trims) selected clip
	Transcodes all clips
	Adds next segment of current tape as a new clip
	Marks current tape position as the start trimming position.
	Marks current tape position as the end trimming position.
	Deletes task
	Shows PowerVCR

9. i-Power

In this mode, you may access Internet resources directly from PowerVCR and also the fantastic CyberEPG service. It provides the latest electronic TV program guide and links for the PowerVCR Recording Scheduler to automatically schedule recording tasks.




Please refer to your Internet browser's online help for more information on surfing the Internet and "i-Power" on page 77.

RECORDING AND PLAYING VIDEO FILES

After properly setting up your software and hardware peripherals, you are ready to begin recording and playing video files. Before you begin, you may want to configure your system settings if the default settings don't suit your need. Refer to "Chapter 5: Changing System Settings" on page 39 for more information.

Displaying Options

PowerVCR has flexible displaying options located on the video display panel:

-  ■ Click on the Always on Top icon so that the video display is always visible and overlaps all desktop application windows
-  ■ Click on the Resize to enlarge or minimize your video display
-  ■ Click on Full Screen to enlarge your video display to its maximum

Tips: Double-click on any given area of the video display once to enlarge it to full screen and once more to restore to window

Recording

Now you may start recording after everything has been set up properly. If you would like to configure your system settings before you begin recording or select another recording profile, please refer to "Chapter 5: Changing System Settings" on page 39 first.

Channel Surfing

Before recording, you might just want to learn how to surf with PowerVCR. The incredible surfing function gives you a break from all the channel flipping and mouse-clicking endured when watching TV by providing a preview of sixteen channels at a time.

- 1 Be sure that your TV Tuner card (or capture card) is installed correctly or your PowerVCR screen will be blank.
- 2 Click on **Surf Channels** located in the video display area.
- 3 Click on Auto Page to allow a continuous refresh of sixteen new channels.
- 4 Click Next and Previous Page to preview other channels.
- 5 Click Auto Scan to scan for available channels.
- 6 Click Cancel Surfing to exit or select one specific channel by clicking on it to return to the normal display.

Recording with the TV Tuner Control

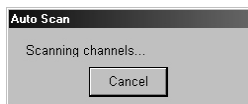
- 1 Be sure that your TV Tuner card (or capture card) is installed correctly or your PowerVCR screen will be blank.
- 2 Start PowerVCR. Click the source indicator until the indicator reads TV if you have an antenna or CATV if you have a cable wire.

Note: PowerVCR will automatically detect and select the country region of your cable provider and the correct video signal format. If not, please see "Chapter 5: Changing System Settings" on page 39 for more details.

- 3 Click the arrow located on the right edge of the PowerVCR panel to activate the TV Tuner Control.



-
- 4 Select a desired channel by using the number pad or left and right arrows.
- 5 Click on Return to return to the last channel.
- 6 Click Auto Scan to scan all the possible channels. To cancel the scanning, click Cancel once the Auto Scan dialog box appears and you will be returned to the original channel

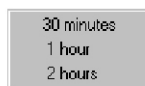


Note: Unlike the playback volume, the recording volume is automatically set and is not allowed for adjustment in PowerVCR II.

Note: Keep in mind that the TV Tuner Control only works with capture devices utilizing WDM drivers.

- 7 After you have selected the desired channel, click **Record**.

Tips: While recording, click on the recording button to display the Recording Timer menu. Select one of the time durations and PowerVCR will automatically stop the recording once the set time duration has expired.



- 8 Click Stop when you are finished.
- 9 The playlist will appear for you to save it.

