

---

***Info:*** Because of the inherent limitations of the Windows operating system in handling files over 2 GB, PowerVCR will automatically save and chunk your video files into 600 MB files if the file's size is over this limit. Thus, when you select the appropriate playlist for playback, all the chunked files will play continuously like a single file.

---

10 To delete all the file(s), click Delete.

---

***Note:*** When you click Delete, the file(s) will be deleted from your playlist.

---

- 11 Click OK when the dialog box appears to confirm your deletion.
- 12 Click on Save to... to save it to another folder other than the default folder.
- 13 A dialog box will appear for you to save it in another folder or to rename it. Click Save when you are finished.

## Recording Analog Video from a Variety Of Sources

Not only can you record TV programming with PowerVCR, there are a lot more sources you may record from. Converting all the analog video content (e.g. videotapes) in your private collection into everlasting digital technology is also not out of the question:

- PC cameras
- camcorders
- VCRs
- TVs

For the aforementioned capturing devices, make sure they are installed properly with the proper drivers. Refer to their respective user's guide for more information.

- 1 Start PowerVCR.
- 2 Select the correct source by clicking on the source indicator.
- 3 If the screen is still blank, click **System Settings** to properly configure the source. Refer to "Chapter 5: Changing System Settings" on page 39 for more details.

- 
- 4 After it is properly configured, a live shot of the current video source should be displayed.

---

**Note:** *If the video display is blank, be sure your video source is functioning properly. Other possibilities may be that the connections aren't set up properly or you selected the wrong input settings.*

---

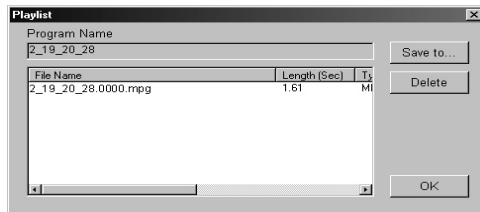
- 5 Click Record when you're ready.

---

**Tips:** *While recording, click on the recording button again to display the Recording Timer menu. Select one of the time durations and PowerVCR will automatically stop the recording once the set time duration has expired.*

---

- 6 Click Stop when you are finished.
- 7 The playlist will appear for you to save it.



---

**Info:** *Because of the inherent limitations of the Windows operating system in handling files over 2 GB, PowerVCR will automatically save and chunk your video files into 600 MB files if the file's size is over this limit. Thus, when you select the appropriate playlist for playback, all the chunked files will play continuously like a single file.*

---

- 8 To delete all the file(s), clickDelete.

---

**Note:** *When you click Delete , all the files will be deleted from your playlist.*

---

- 9 Click OK when the dialog box appears to confirm your deletion.
- 10 You may save it to another folder other than the default folder with a different name. Click onSave to...

- 
- 11 A dialog box will appear for you to save it in another folder or to rename it. Click **Save** when you are finished.

---

*Tips: To enlarge the video display to full screen, click anywhere on the screen. To restore to original size, click again.*

---



## Recording from a DV Camcorder

Whether your DV is playing video or filming special moments, PowerVCR records in real-time. With the astounding FireWire transfer rate, you can also record crystal clear video and audio from your DV camcorder.

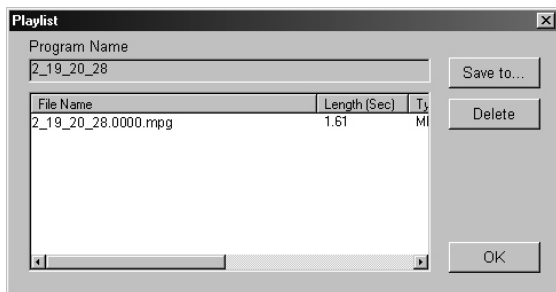
---

*Note: Before beginning, make sure all devices are installed properly with the proper drivers and that your DV camcorder is already turned on. Refer to the respective user's guide for more information.*

---

- 1 Start PowerVCR.
-  2 Select the correct source by clicking on the source indicator.
- 3 If the screen is still blank, click **System Settings** to properly configure the source. Refer to "Chapter 5: Changing System Settings" on page 39 for more details.
- 4 After it is properly configured, a live shot of the current video source should be displayed.
- 5 Turn the DV camcorder's power switch to play (VCR) mode.
- 6 Fast forward or rewind to the beginning of the segment that you want to record. Press your camcorder's play button.
- 7 Or, turn the DV camcorder's power switch to record (Camera) mode if you would like PowerVCR to record real-time content through the DV camcorder, which is in standby mode but not recording.
-  8 Then, begin recording by clicking PowerVCR's **Record** button.
- 9 Click **Stop** when you are finished.

- 
- 10 The playlist will appear for you to save it.



- 11 To delete all the file(s), click Delete

---

**Note:** When you click Delete, all the files will be deleted from your playlist.

---

- 12 Click OK when the dialog box appears to confirm your deletion.
- 13 You may save it to another folder other than the default folder with a different name. Click on Save to...
- 14 A dialog box will appear for you to save it in another folder or to rename it. Click Save when you are finished.

---

**Tips:** To enlarge the video display to full screen, click anywhere on the screen. To restore to original size, just click again.

---

## Snapshots



PowerVCR captures still images with the snapshot function. With one easy click of the mouse, you may capture images during the preview mode before recording begins. To set the directory your snapshots are placed in, go to "Chapter 5: Changing System Settings" on page 39 for more details.

## Instant TV Replay

Your own personal up-close and instant replay is at your fingertips with PowerVCR's sterling new Replay feature. No more annoying and prolonged periods of waiting for an instant replay from your TV station, you can simply

---

invoke the Replay function while watching TV for your own private instant replay!

---

***Note:** Replay files are temporarily stored in your hard drive, but are automatically deleted as soon as exiting Replay mode.*

---

- 1 While watching TV with PowerVCR, switch to the **Instant TV Replay** function by clicking it in the Master panel and instant replay playback will commence. Refer to "Chapter 5: Changing System Settings" on page 39 for more details.
- 2 Refer to the next section for more details on Navigating in Replay Mode.

---

***Note:** There is no Stop function in Instant TV Replay mode.*

---

### Navigating in Replay Mode



- Click **Skip forward** (skip commercials) or **backward** (instant replay) by clicking on the corresponding buttons in the control wheel.

---

**Note:** The skipping forward or backward speed is set at seven seconds.

---



- Click **Pause** to momentarily cease instant replay.
- The fastest method for navigating here is to drag the slider. Note that the live broadcast will always be at the slider's end, so you may notice that the slider bar will regularly reposition itself during playback.

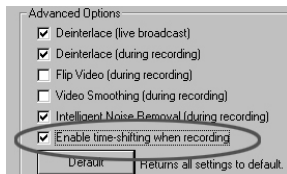
---

## Time-shifting Playback

Time-shifting playback is similar to Instant TV Replay in regards to the instant replay capability, but may only be used while recording video content. Another difference is the recording quality, which is fractionally better, yet at the same time, consumes more CPU resources.

First, we will turn this feature on:

- 1 Be sure you are in the **Live/Digital Recorder** mode.
- 2 Click **System Settings**.
- 3 Click the **Recording/Advanced** tab and in the **Advanced Options** section, click **Enable time-shifting playback when recording**.



- 4 Click **OK** to exit System Settings.



The **Time-shifting Playback** button will now appear below the **Snapshot** button on the **PowerVCR** panel.

- 5 Click **Record**.

---

*Tips: The Recording Timer may also be set here. Click once on the record button and the menu will appear for selection.*

---

- 6 Click **Time-shifting**.
- 7 The mode will switch to Time-shifting. Click **Play** to begin time-shifting playback.
- 8 To **Fast Forward**, **Rewind**, or **Pause**, click the corresponding buttons.

---

*Note: If you rewind to the beginning of the recorded content during time-shifting, the mode will automatically switch back to Live/Digital Recorder*

---

- 9 To return to the recording in progress (i.e. the Live/Digital Recorder mode), click **Stop** or **Time-shifting** again.

## Playing Files

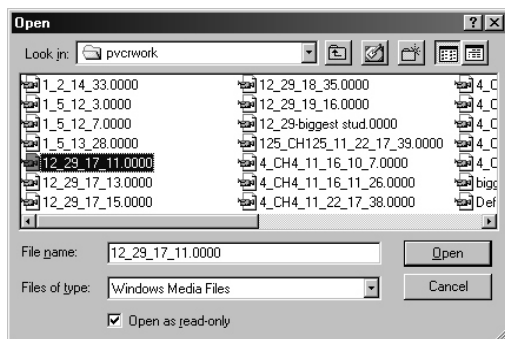
The File Player plays all the playlists or video files you have stored in your hard drive.

---

*Info: Because of the inherent limitations of the Windows operating system in handling files over 2 GB, PowerVCR will automatically save and chunk your video files into 600 MB files if the file's size is over this limit. Thus, when you select the appropriate playlist for playback, all the chunked files will play continuously like a single file.*

---

- 1 Switch into the FilePlayer mode.
- 2 A dialog box will automatically appear for you to select a playlist to play.



- 3 Otherwise, you may click the Open video files.
- 4 Type in or select the playlist or file you would like to play List Playlist files or Windows' Media files by clicking on the drop-down menu in the Files of type field and selecting the appropriate file extension.
- 5 Click Open.
- 6 After opening the file, click Play on the Control Wheel.

## Navigating During Playback



- PowerVCR's fast forward and rewind speeds are set at 2X. Click Play to resume playback.



- You may also click anywhere along the slider bar in order to jump to a precise spot or drag the slider during playback for navigating.

- 
- When you click Stop during playback, the video will always return to the beginning of the file.

## Using the Step Functions

During playback, use the step functions while you are in the Pause or Stop mode. You may save time capturing snapshots of specific frames by stepping backward (left) or forward (right) without wasting precious minutes blindly pausing on the right frames. Please refer to "Snapshots" on page 32 for more information on snapshots.



- 1 When in Pause or Stop mode, click the **Step Left** or **Step Right** functions for moving minimal frames at a time.

---

***Note:** Step Left functions move one GOP (Group of Pictures) backward at a time, while Step Right moves one frame forward at a time.*

---

- 2 To begin playback, click **Play**.

## Snapshots

PowerVCR captures still images with the snapshot function. With one easy click of the mouse, you may capture images during the preview mode before recording begins. To set the directory your snapshots are placed in, go to "Chapter 5: Changing System Settings" on page 39 for more details.



---

## Express Menu

PowerVCR provides a convenient express menu that allows you to access common commands quickly and efficiently. Right click when your cursor is positioned over the video display and the menu is displayed:

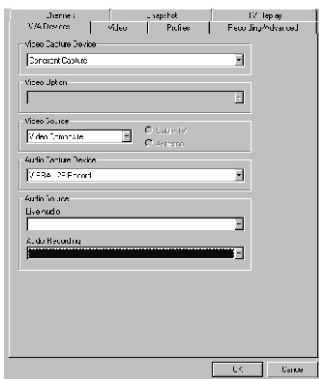
System Settings PowerVCR Panel
Full Screen Restore Size
Record Play Pause Fast Forward Rewind Stop
Snapshot Time-shifting
Increase Playback Volume Decrease Playback Volume Increase Recording Volume Decrease Recording Volume
Previous Channel Next Channel Jump
Power Off

# CHANGING SYSTEM SETTINGS

Settings are configured automatically before recording. If you would like to alter them, these are the following sections under the **Live/Digital Recorder** mode:

- **V/A Devices** set configuration for all video and audio devices.
- **Video** configures the visual elements of PowerVCR along with setting your video overlay mode.
- **Profiles** select and create recording profiles along with identifying and displaying instruction sets.
- **Recording/Advanced** sets the timer recorder along with advanced recording options.
- **Channels** list available stations in your area and allow you to name specific channels.
- **Snapshot Settings** select where you would like your snapshot image to be placed.
- **Replay Settings** modify how much disk space you would like to allot for instant replaying. The replay working directory may also be set here.

## V/A Devices



This is the default tab where you may set your video capture device, audio capture device and other video and audio options.

## Video Capture Device

Your default capture device should already be selected. If not, click on the drop-down menu to select the correct capture device.

## Video Option

PowerVCR is able to control video formats and options for the WDM (Windows Driver Model) drivers, so its settings will be disabled. However, if the Video for Windows driver is being utilized, you may modify various options, formats and the source depending on the manufacturer. All options below may fall below any type of the following categories: Video Format, Video Source, Video Display, etc. Listed below are some of these possible categories:

- Many options concern the capture format. Read the previous sections and the paragraph below for more information.

**Info:** RGB is an additive color model (color system) consisting of the three primary colors red, green, and blue. YUV is a color encoding-scheme for natural pictures in which the luminance and chrominance are separate. The human eye is less sensitive to color variations than to intensity variations, so YUV allows the

---

*encoding of luminance (Y) information at full bandwidth and chrominance (UV) information at half bandwidth. The YUV color model luminosity and color values are processed separately. The YUV values are calculated by addition or subtraction of specifically formed RGB values. RGB is the default setting with 16 bit (the higher the bit, the better the quality but with more memory consumed).*

---

- For video source, choose the appropriate input such as SVHS, S-Video, TV tuner, composite, etc.
  - Some allow field order (even versus odd fields first) selections. These do not have to be altered and do not impact the codecs.
  - Output size or the image size of your video display is a prevalent option. The larger the size, the more it will consume CPU resources so select according to available resources.
- 

***Note:** If you have modified the image size (output size) here, and the setting is different from that of your recording profile, the profile's output size will always act as the default. Go to "Chapter 2: Video Signal Formats" on page 12 for more details.*

---

- Some allow adjustment of brightness, hue, color, and saturation. Click on the slider and drag.
- You may also choose the type of video signal. Refer to "Chapter 2: Video Signal Formats" on page 12 in selecting the appropriate one.

## Video Source

Click on the drop-down menu to select one of the available options depending on your video source. If you chose Video Tuner, click on Antenna or Cable depending on how your TV tuner card receives the signals.

## Audio Capture Device

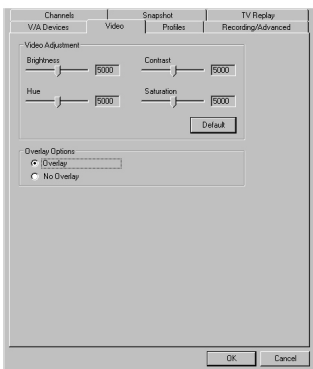
The default should be automatically set as your sound card. If not, click on the drop-down menu to select the correct sound card device.

Audio Source (Live Audio & Audio Recording)

Typically, both of these settings should be identical.

- Set the correct audio source for listening during Live Audio by clicking on the drop-down menu and selecting.
- For Audio Recording, the audio source does not have to match Live Audio depending if you have multiple audio sources. Click on the drop-down menu to select other audio sources if necessary.

# Video



Adjust the visual aspect of your video content when viewing and recording. Click on **Default** to return to the original settings.

- **Brightness:** Drag to the right to increase the intensity of light and left to decrease.
- **Contrast:** Drag to the right to increase the contrast of colors and left to decrease.
- **Hue:** Drag to the right to increase the color tones and left to decrease.
- **Saturation:** Drag to the right to increase the degree of color permeation and right to decrease.

## Overlay Setting

### Overlay

This is the default setting where your VGA card regulates your video display performance and is optimal for recording video content from your TV tuner card or capture card where you prefer live content to be good quality.

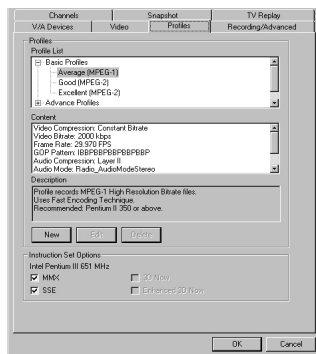
### Non-Overlay

This allows PowerVCR, as opposed to your hardware, to regulate your video display performance (refer to "Chapter 2: Video Overlay Mode" on page 9 for more details).

---

Depending on your VGA graphics card and capture card, you may not be able to override the hardware default setting for video overlay. When hardware employs the overlay mode, less CPU resources are consumed, speed is faster, video quality is better, but less stable than non-overlay mode (when PowerVCR regulates video display performance).

# Profiles



## Selecting your Recording Profile

Recording profiles are great for discerning video enthusiasts or hard drives with a limited amount of space. Choose a profile that will suit your recording requirements. If it's a file that warrants great video quality or only an experimental recording, PowerVCR's recording profiles are guaranteed to suit any of your inclinations.

When you first start PowerVCR, the default position will be the Live/Digital Recorder.

- 1 Click **System Settings**.
- 2 Click on the **Profiles** tab.
- 3 Now, select a profile under the Profiles List in the following categories:  
**Basic Profiles** or **Advanced Profiles**
  - The recording profiles are divided into two distinct categories. The first selection, **Basic Profiles**, is for novice or intermediate users.
  - The **Advanced Profiles** are for recordings that require stringent constraints.

---

**Tips:** Generally, use MPEG-1 for low resolution (normal usage) and MPEG-2 for high resolution. Keep in mind the recommended system requirements for





- 
- B-Frame (Bi-directional pictures): B-frames' predictions are forward, backward and bi-directional, which is relative to the other I-frames and P-frames. Compression is at a high level.

### **Audio Compression**

The default, Layer 2, contains more efficient codes for representing bit allocation and performs better than Layer 1. Possible applications for this layer are the storage of audio sequences and content on CD-ROM or VCD audio tracks.

### **Audio Mode**

Stereo (default) includes two independent channels but bitrate remains constant while the channels' split may vary. The encoder uses this flexibility to improve quality by allocating more bits to the channel with the higher dynamic signal. Stereo is best for audio quality at higher bitrates.

### **Audio Bitrate**

Like its video counterpart, this too is measured in kilobytes per second (kbps). The higher the bitrate, the more hard disk it will use but with better quality.

### **Speed Quality Indicator**

When encoding, the trade-off parameter consists of speed versus quality. '0' is for the fastest speed with the lowest quality while '3' is for the best quality at the lowest speed but consumes more CPU resources.

### **Frame Size**

This determines the frame size when recording. The available sizes are 320x240, 352x240, 352x288, 640x480, 720x480, 720x576 or As Source, which is dependent on the driver's automatic settings.

Now, if you would like to create your own personal profile, go to the next section.

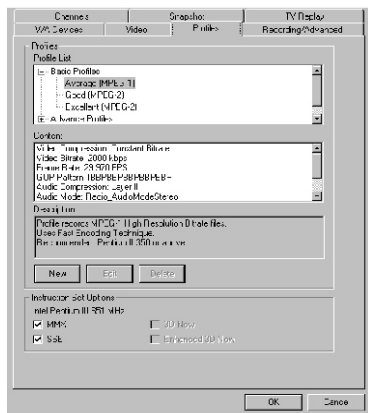
## **Creating your Own Profile**

If it's precision you desire, look no further than PowerVCR when recording video files. Basic users or video aficionados alike may create numerous recording profiles tailored to their every need and heart's content.

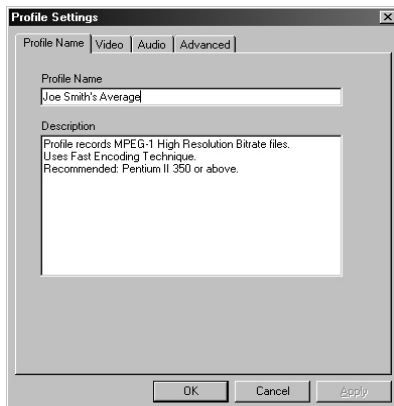


- 1 Click **System Settings** while in the Live/Digital Recorder mode.

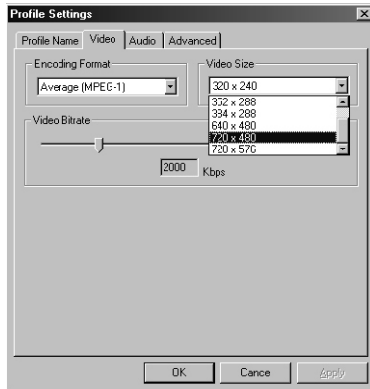
- 2 Click the **Profiles** tab and then select an existing profile that closely matches with the new profile you want to create.



- 3 Click **New** only after selecting an existing profile.
- 4 Rename your profile in the **Profile Name** field.

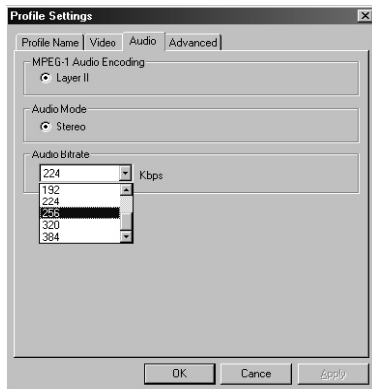


- 5 Click the **Video** tab.

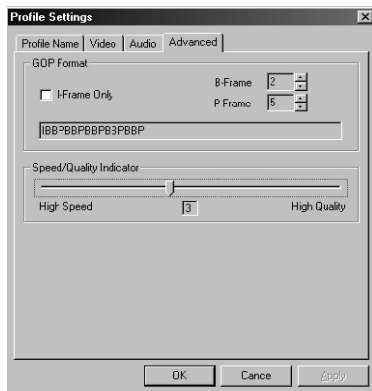


- 6 Select an encoding format.
- 7 Select an **Output Size** for your video content by clicking the drop-down menu. Remember that the larger the size, the more disk space used.
- 8 Drag the **Video Bitrate** slider left to decrease the Kbps (kilobits per second) or right to increase the quality of video content but at the expense of disk space consumed.

- 9 Click the **Audio** tab.



- 10 Click the **Audio Bitrate** drop-down menu and select **Kbps** (kilobits per second). The higher the Kbps, the better the quality of audio content but at the expense of disk space consumed.
- 11 Click the **Advanced** tab.



- 
- 12 Click on the arrows to increase the number of a specific frame or click the I-Frame Only box. Refer to the "**GOP (Group of Pictures) Pattern**" on **page 45** for more details.
  - 13 Click and drag the indicator left or right to adjust the quality and speed of the recording. Refer to "Speed Quality Indicator" on page 46 for more details.
  - 14 When you're done, click **OK**. Click **OK** again to exit the System Settings.

## Instruction Set Options

The **CPU Type** will automatically be determined by PowerVCR. The **Instruction Set Options** depend on the CPU type, which are from two possible microprocessor manufacturers:

- Intel (MMX and Streaming SIMD Extension)
- Advanced Micro Devices (3D Now and Enhanced 3D Now)

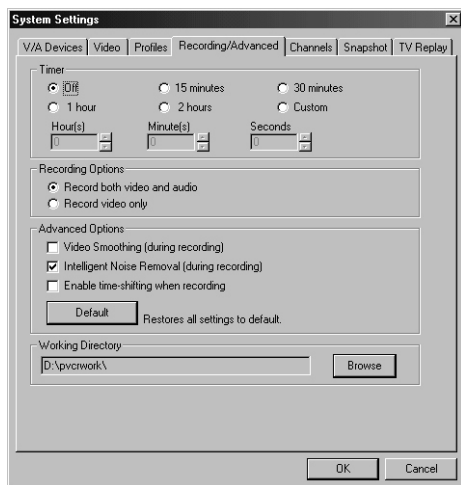
---

***Info:** Instruction sets optimize and regulate multimedia tasks and configuration.*

---

Be sure that all possible selections are checked for optimal recording.

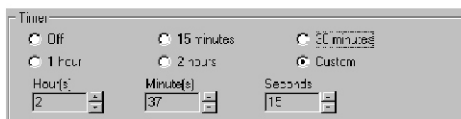
## Recording/Advanced



## Timer

The Timer enables you to set the recording timer selections that appear during the recording process when you click on **Record**.

- 1 Choose a specific timed setting.
- 2 To customize, click on Custom or use the arrows to directly increase or decrease **Hours**, **Minutes** and **Seconds** (if the selection is already on a timed setting).



- 3 Continue on to the following sections of this tab.

---

## Recording Options

The Recording Option lets you choose the type of content you would like to record (only audio or video). Select one but be sure your audio and video equipment is set up properly before recording.

## Advanced Options

### Video Smoothing

Check here if video content is too fine and on the grainy side in order for a smoother image.

### Intelligent Noise Removal

Checked as default, it removes video artifacts such as white noise from video signals.

---

***Note:** If either Video Smoothing or Intelligent Noise Removal is checked, more CPU resources will be required.*

---

### Enable Time-shifting Playback When Recording

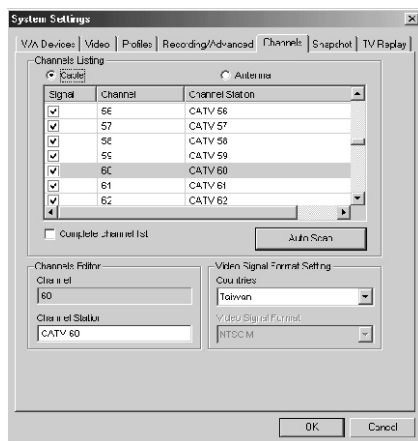
This option enables the time-shifting playback feature during recording. Be sure that your CPU can support this load. Refer to "Chapter 4: Time-shifting Playback" on page 34 for more details.

# Channels

To personalize your channels or TV stations for your reviewing pleasure, this section allows you to identify specific channels and TV stations.

## Channels Listing

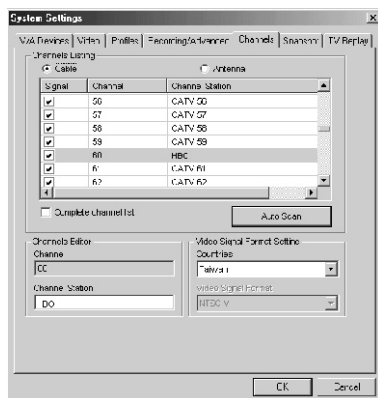
After your cable or antenna is properly installed, choose either **Cable** or **Antenna**. A listing of channels will appear for you to select and edit in the fields below.





# Channels Editor

- 1 Select a channel for editing in the listing above, and the channel number will appear in the Channel field.



- 2 Enter the name of the channel (TV station) in the **Channel Station** field.
- 3 If you would like to scan for available channels, click **Auto Scan**. Click **Cancel** to stop the scan during the scanning process.
- 4 Click **OK** when you are finished.

## Video Signal Format Setting

For this section, select the appropriate country or region that your cable operator is located in from the **Countries** drop-down menu. From this selection, PowerVCR will be able to determine the video signal format.

---

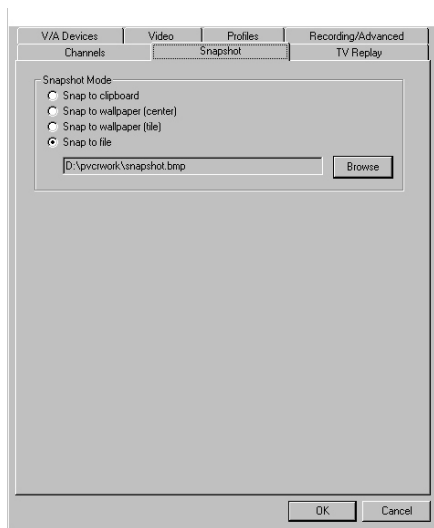
**Caution:** We advise against changing the video signal format unless the country's format has been changed or the setting is incorrect.

---

For more information on video signals, please refer to "Chapter 2: Video Signal Formats" on page 12.

---

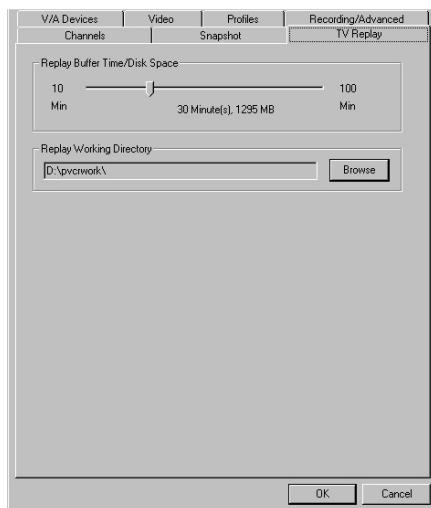
## Snapshot Settings



- **Snap to clipboard**: Saves the image file to your Windows clipboard.
- **Snap to wallpaper (center)**: Replaces your current desktop wallpaper with the snapshot image file displayed in the center position.
- **Snap to wallpaper (tile)**: Replaces your current desktop wallpaper with the snapshot image file displayed in a tile format.
- **Snap to file**: Stores the captured snapshot image directly into a folder you have selected. Click **Browse** to search for another directory other than the default.

---

# Replay Settings



**Replay Buffer Time/Disk Space** sets the amount of disk space you would like to reserve for the temporary replay file. Drag the slider to the right to allow for more disk space and a longer replay time.

- **Replay Working Directory** displays the directory path for temporarily saved replay files. Click **Browse** to search for and change directories.

# EDITING AND CONVERTING VIDEO FILES

Not only does PowerVCR possess astounding recording features and breathtaking recording quality, it also allows you to edit all the files that you have recorded or boxes full of VHS tapes stashed away in your private collection. PowerVCR cuts and trims out unwanted footage of any given file or combines and merges video clips or files to resemble a feature length movie.

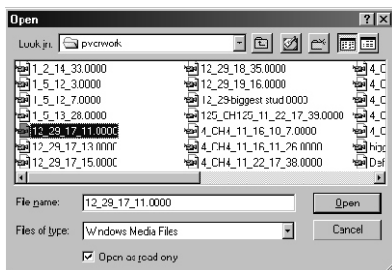
If you have in your possession AVI video files that are clogging up a lot of disk space, there is no need to fret because PowerVCR's converting function saves you all the disk space you need, for it converts large and uncompressed AVI files into MPEG format. Refer to the "Converting" on page 67 for more information.

## Editing

There is a host of ways to go about editing your video files. You may trim or merge them in any fashion you like, but be sure to make use of the Step Left/Right Trim functions for precise editing.

## Trimming Clips

- 1 Click Open to load a video file for editing. After you are done selecting a file, click Open.



- 2 The first frame of the video file will be displayed in the upper left pane after you have selected it in the display area .
- 3 Now, drag the Start Trim and End Trim sliders located at the top of the PowerVCR panel and release at the specific points where you would like the newly trimmed file to begin and end.

---

**Note:** Both trim functions will be highlighted when the cursor is positioned over it.



- 4 If you want to add another task (another clip) to the end of the first trim or task (the End Trim position), click Add Next Segment and the next task will be added to the original but both tasks will still remain two distinct files.



---

**Note:** This function only applies to tasks with remaining time from the original clip since the next segment will only be added after the End Trim position of the original task.



- 5 Click Trim Selected Item(s) to begin trimming.
- 6 You will be asked to save and name your edited file first. Name it and then click Save.



Step Left and Right Trim

---

The purposes of the step left and right functions in the Video Trimmer mode are for accurate trimming and merging timed within fractions of a second. Their function is similar to that of the normal Step Left and Step Right playback functions, but with the difference being they only step in the selected trim area and adjust Step Left Trim or Step Right Trim positions.

- 1 To use the editing **Step Left/Right Trim** functions located to the immediate left and right of Start/End Trim, click on either **Start** or **End Trim** first after you have set the trimming positions.
- 2 Click **Step Left Trim** (after clicking on Start Trim) or **Step Right Trim** (after clicking on End Trim) and the selected content will step in the chosen direction.
- 3 Click **Trim Selected Item(s)** after you are finished.
- 4 A dialog box will appear. Select the proper directory and name your file. Click **Save**.

## Previewing and Selecting Clips

- 1 To preview files before trimming, select the files by keeping <CTRL> (selects files individually) or <SHIFT> (selects files in a row) pressed as you click on files with the mouse in the display area.
- 2 To select multiple files quickly, use your mouse in the cut list area to click, drag (enlarging selection area), and release.
- 3   To switch the order of the files, select a file first and then click on the **Move Up** and **Move Down** arrows.
- 4 Click **Play** to begin previewing when you have finished selecting files.

---

**Note:** During editing and previewing clips, you may experience time lags when playing videos. If your video content utilizes constant bitrate, these lags will be minimized.


---

---

## Merging Multiple Video Clips

If you have a collection of files or an infinite number of video samples, you may produce your own feature length movie by merging all your favorite video clips!



- 1 Click **Open File** to select your files when you are in the Video Trimmer mode.
- 2 Click **Open** after you are done selecting a file.
- 3 If you like, you may trim the selected files first. Please follow the directions in the "Trimming Clips" on page 64.
- 4  Adjust the order of the files by pressing the **Up** and **Down** arrows or **Delete** the files. The order of the file will start from the top so be sure to set the order properly before merging.
- 5 Click **Merge All Items** when you are ready. You will be asked to save and name your file.
- 6 After naming your file, click **Save**.

---

***Note:** In order to preserve original video quality, be sure to heed the following precautions: 1) Do not merge different formatted video files (e.g. VCD with MPEG format or MPEG-1 with MPEG-2 formats) 2) It is not advised to merge different recording profiles. 3) It is not advised to merge video files that have different frame sizes (e.g. 320x240 with 640x480)*

---

# Converting

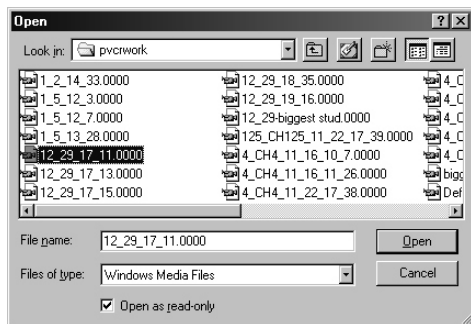
When converting, usually uncompressed. AVI video files will take up more memory and are the most likely candidates to be converted into compressed .MPG files.

---

*Caution: Some AVI files are already compressed and don't need further compression nor conversion unless for merging. If already compressed, further conversion of such AVI files will result in an exponentially large MPEG file.*

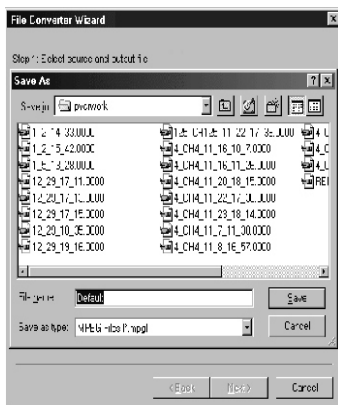
---

- 1 Click on the File Converter mode from the master panel.
- 2 Click Open File to load your video file(s).
- 3 Click Open after you are done selecting.

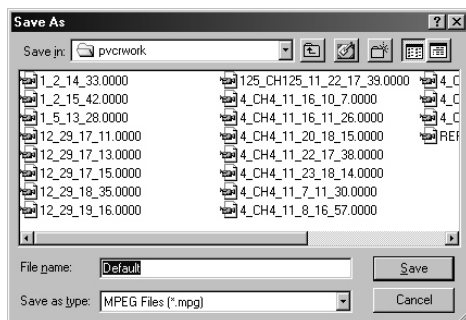




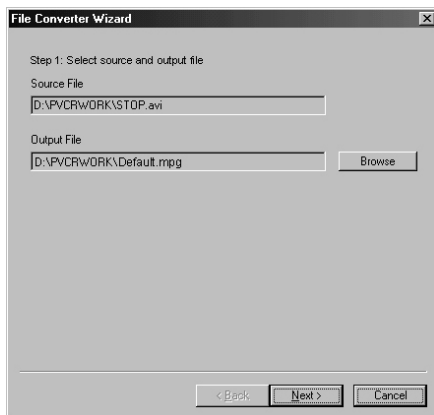
- 4 After opening your file, the Save As dialog box appears on top of the File Converter Wizard dialog box.



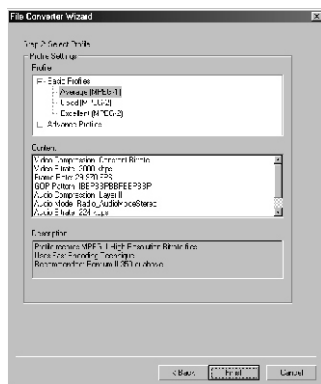
- 5 Select a directory and then name your file or just use "Default". When you are finished, click Save.



6 Click Next.



7 Choose a converter profile. For selecting profiles, refer to "Chapter 5: Selecting your Recording Profile" on page 44. Click **Finish**



- 
- 8 This will be added to the cut list. Now, select this file and the first frame will be displayed in the upper left pane.

---

*Tips: You may also trim your files to be converted by following instructions in the **Trimming Clips** section earlier in this chapter*

---



- 9 Click **Convert Selected Item(s)** after you have selected specific files or add more files by repeating the above steps.



- 10 Click **Convert All Items** to convert all your files at once.

# SCHEDULING RECORDING TIMES

## Scheduling with the Wizard

For recording programs when you're away from your computer, the Scheduling Wizard meets every one of your recording needs. Be sure your TV tuner card is installed properly and you have cable access or an antenna. The final reminder is to keep your computer on during scheduled recording times!



- 1 Switch to the Recording Scheduler mode and the Wizard should automatically appear or click the Scheduling Wizard icon located in the Recording Scheduler panel.



- 2 A dialog box will appear. The **Enable this Schedule** should be selected as default. Unselect it if you want to disable it.



- 7 The scheduled task will now appear in the video display area. To exit the Recording Scheduler, click the upper right hand corner.

## **Editing Scheduling Tasks**

- 1 To edit scheduling tasks, just double-click on the specific task located in the Recording Scheduler panel and the Scheduling Wizard will automatically appear.
- 2 To add more scheduling tasks, repeat the steps in the last section.
- 3 To delete tasks, click on Delete or press <DELETE> on your keyboard after selecting a task in the display area.



---

# NETWORKING

## Networking Protocols

- TCP/IP, 10/100 Base-T Fast Ethernet
- Built-in Ethernet Controller: RealTek RTL8139C
- Wireless LAN through PCMCIA socket

# SOFTWARE

## Operating Sytem

- Microsoft Windows 98 Second Edition
- Microsoft Windows 98 Millennium Edition
- Microsoft Windows XP Home Edition

## Application Program

- T PCI TV Program

# ENVIRONMENTAL

## Environmental Specifications

- Operating temperature 5 to 35 °C
- Storage temperture 0 to 60 °C
- Humidity 30% to 80% non-condensing

## Power Specifications

- External power supply
- 100-240 VAC at 50-60Hz
- Max 6.67A

# REGULATORY COMPLIANCE

## RF Interference

- FCC Class B

estation

---

# User's Guide

Ver Sen : 1.0



*All-In-On PC*

---

August.2003