

TACTUM 4NTR



4.3” touch panel LCD Remote Control

Installation guide



THANK YOU AND CONGRATULATION:

Thank you for the trust you have according to us buying the TACTUM 4NTR Remote Control. This device allows you to drive VITY “MBC” controllers, as well as drive directly KNX devices, RS232 / 422 / 485 devices and infrared devices. The LAN and Wi-Fi connection allows the user to drive IP devices as well as Internet and Intranet network connecting. This manual is made to help you during installation. Read it carefully before processing to the installation.

Informations contained in this manual are protected by Copyright. Any part of this manual can't be copied or reproduced to any form, without written authorizing from Vity Technology - France. VITY Technology is not responsible in case of accident or damage linked to an error or forgetting in this manual. In a worry of improvement of the product, all the manual content may be modified without any warning. TACTUM and “MBC” Media Bus Control® are registered trademarks of Vity Technology. Others products or names used in the manual are the registered property or not of their own company or organization.



180 rue Pierre Landais, 56850 Caudan, France

Téléphone: 00 33 (0)2 97 89 20 02 - Fax: 00 33 (0)2 97 89 20 10

WWW.VITY.COM



Security regulation & Approval

CE - FCC conformity

This device has been tested and approved conform to the class A and B digital device limits.

WARNING: changes and modifications done by the user and not approved by the manufacturer could cancel the conformity and reduce authorization of using the TACTUM 4NTR remote control.

Copyright VITY SAS

“TACTUM 4NTR STARTING GUIDE” All right reserved. The total or partial reproduction is forbidden without any authorization from the copyright owner.

Contents

- 1. WHAT IS IN THE TACTUM 4NTR PACKAGE? 5
- 2. PRESENTATIONS OF THE TOUCH PANEL LCD 4.3” TACTUM 4NTR REMOTE CONTROL 6
 - A. FEATURES 6
 - B. USE 7
 - C. SPECIAL FEATURES..... 8
 - D. SPECIFICATIONS..... 10
- E. WARRANTY..... 12

1. What is in the TACTUM 4NTR package?

- 1 pc TACTUM 4 NTR remote control
- 1 pc table stand
- 1 pc soft and flat network RJ 45 LAN cable of 2m
- 1 pc Power supply 100/240 DC - 12V DC 1 Amp
- 1 Pc bag containing: 1 camera shutter and 4 screws 13.4 mm for the TACTUM 4 NTR remote control fixation on the wall embedded case .



TACTUM 4NTR remote control



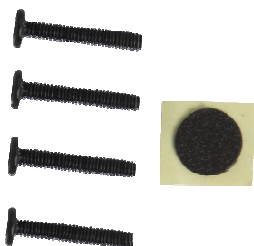
Table stand



1 pc flexible and flat network RJ 45 LAN cable of 2m



1 pc Power supply 100/240 AC - 12V DC 1 Amp



Bag containing: 1 camera shutter and 4 screws 13.4 mm

2. Presentations of the touch panel LCD 4.3” TACTUM 4NTR remote control

The versatile touch panel TACTUM 4NTR remote control is suitable for current and future requirements. fitting current and intended demands. It may be wall or furniture embedded as well as just lay on a table. Stylish and not deep, it has been designed to be easily integrated and employed in conference room, offices or for residential automation, building, hostels, to make centralized orders or actions management to facilitate daily tasks. It is available in two colors: white and anthracite grey.

A. Features

Only one model for two applications: on a table with its removable table stand , incorporate in a wall with its optional wall embedded case (WB-4NTR) or just fixed to the wall with its optional support (OWN-4NTR).

- High resolution LCD colored screen (WQVGA 480x272) for a comfortable vision.
- Multipoint capacitive touch panel allowing particular actions (enlargement, sliding ...).
- LAN Network connection to drive VITY’s “MBC” controllers and to access to Intranet and Internet networks. Network port compatible with PoE (network cable feeding) that facilitates the plugging , user doesn’t need a separate supply.
- WiFi can be use when the wired LAN network can’t be.
- RS232/422/485 port for a direct drive of series devices.
- KNX port for a direct control of electric modules using the standard, simplifying the electric control global management.
- Infrared port for direct control of the devices using IR codes (TV, DVD, audio ...).
- Motion detector generates the alarm of the remote control or confirmation of occupation can be used as a presence detector.
- Brightness sensor to adapt the LCD screen brightness to the environment or launch script.
- Temperature sensor can measure the close environment temperature.
- Infrared sensor to launch script from a standard IR remote control, also useful for IR codes learning.
- Camera to control nearby environment, microphone for intercom and speakers for audio diffusion.
- Incorporated Web server to perform remote commands from a PC or Smartphone.
- Frontal trap door gives a way to a USB port and an ON/OFF switch.
- Four backlit buttons may be programmed for priority actions.

B. Use

After carefully unpack the TACTUM 4NTR remote control and checked all accessories showed on the first page of the manual are present:

1 - Connect the flexible and flat LAN cable to the Ethernet network RJ45 LAN plug at the back of the remote control.

2 - Connect the green power plug to the 12V DC1A port at the back of the remote control. Then, connect the supply to a 100-240V AC plug.

3 - Open the frontal trap door and push the right blue button “On / Off”, the button get illuminated and Vity’s logo appears for few seconds during the program loading period.

A. It is advice to keep the remote control under tension for a frequently use, it will start the standby mode to save energy, and be activated again when someone will get closer of the remote control.

B. If you want to turn it off, just push the « On / Off » button and it will stop.

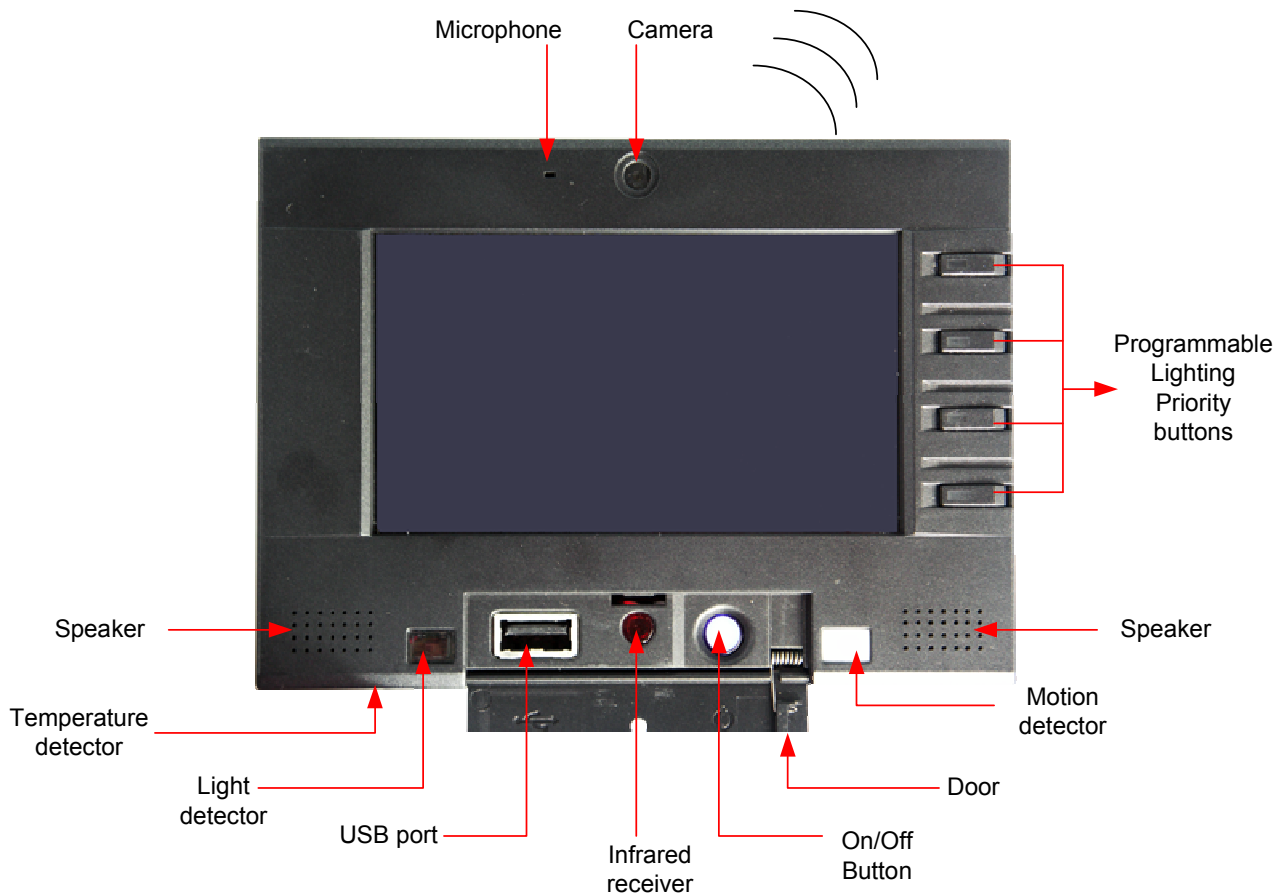
4 - The program icons appear on the screen, a simple touch with the finger will activate the action related to the icon.

5 - The four buttons at the right of the screen are intended for special applications when they are created in the program.

Note: The program appearing on the screen is designed and installed by your supplier and it is appropriated to your application.

C. Special features

Front



Motion detector: Allows the remote control to get out of the standby mode when someone is coming within 2 meters from it. This detector can be programmed to act as a presence detector.

Light detector: Allows to adapt the light of the screen in function of the ambient light (ex: in a very bright light room, the light of the screen will be at the maximum and conversely). The light detector can launch script in function of the ambient light.

Temperature sensor: According to the programming, it shows ambient temperature level near the remote control and can launch actions like turn on air conditioner or heating.

Infrared receiver: This receiver can interpret and launch orders from the AV infrared codes sent from infrared remote control. This function may be programmed.

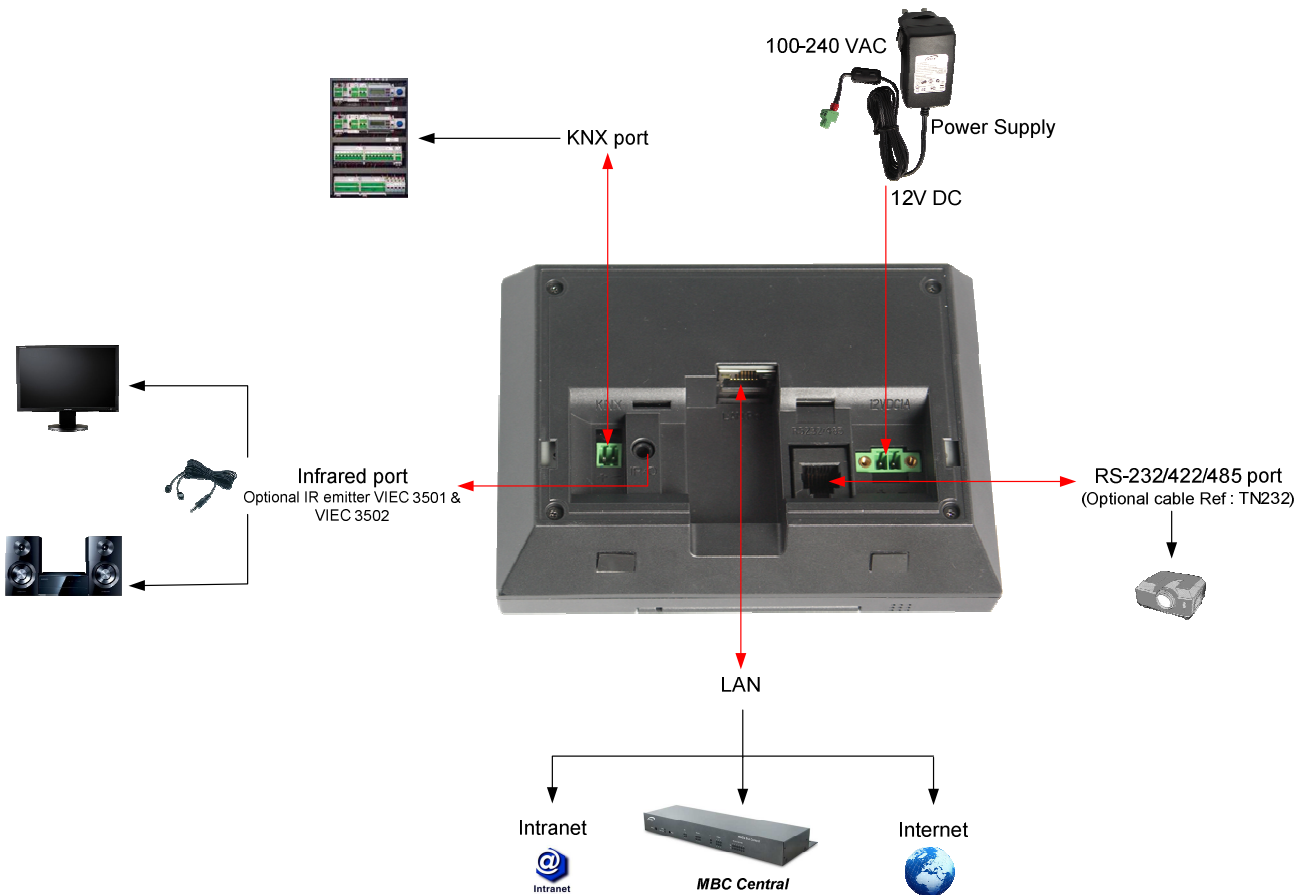
Micro Camera: The camera and the micro can be used together or separately, and produce a bidirectional video and audio communication (the camera, coupled with mention sensor, can be also used for security).

Speakers: Can diffuse sound, music and audio messages.

USB port: The USB port, behind the front trap door, is a USB 1.1. It is exclusively reserved for maintenance (updating applications).

NOTE: It is not advice to try to connect peripheral devices, at the risk of damage the functionalities of the remote control.

Rear



12VDC1A: Power supply plug allows to connect the 100/240 VAC power supply 12 VDC output or a separate 12-36 volts DC power available on car, boat, train, plane).

NOTE: Be careful to respect polarity - and + (they are print under the power input)

RS232/485 port: Allows with an optional cable (ref: TN232) to communicate with RS 232, 422 or 485 devices.

LAN/PoE port: LAN network plug, allows connection at the MBC controller and access to the Intranet and Internet Network. (Configuration of the IP is done by the installer and is not explained in this manual). This plug can be used with the optional PoE power supply feeding the remote control through an IP cable substituting the 12V power supply.

Infrared Port: Allows direct connection of an optional infrared transmitter (simple or double, ref : VIEC 3501F or VIEC 3502F) to control AV devices : TV, DVD, Hi-Fi, Audio multiroom, ... (IR code learning is done by the installer and is not explained in this manual).

KNX plug: KNX connection port allowing communication with all electric devices using KNX norm (configuration is done by the installer and is not explained in this manual).

NOTE : Be careful to respect polarity - and + (they are print under the plug)

Others

WIFI: The TACTUM 4NTR remote control can communicate through WiFi 802.11b/g. (Configuration is done by the installer and is not explained in this manual).

In case of problem:

If the TACTUM 4NTR remote control doesn't work, before calling the technical service, check the On/Off button behind the front trap door, it should be turn on and check that all the cables are connected and locked.

D. Specifications

LCD screen	TFT Colored 4,3" (10,9 Cm) Type : WQVGA (480X272) Format : 16/9 Brightness : 500cd/m ² Colors : 262,144 (18-bit)
Touch panel	Multipoint Capacitive
Memory	Internal: 128 Mo SDRAM Storage : MiniSD : 1Go
Inputs/Outputs	1 X10/100 Mbps Ethernet PoE (RJ45) 1 X RS-232/422/485 (RJ11) 1 X KNX Port (2,5 Type Phoenix) 1 X Infrared Port (Mini Jack 3,5 mm) 1 X Slot (Internal) memory card MiniSD 1 X USB 1.1 Port 1 X infrared receiver 1X Light detector 1X Motion detector 1X Temperature sensor 4 X Blue backlight Push buttons 1 X ON/OFF button
WI-FI	802.11 b/g
Camera	3M pixel CMOS YUV
Audio	2 X 1,5W speakers 1 X Microphone

Power Supply	Consumption : 0,56 A @ 12VDC Standard Power Supply 110/240 VAC- 12 V DC Mode: 12/36 Volts DC power supply supported
Certifications	CE Class A-B, FCC Part 15 Class B RoHS IEC/EN-60950
Environment	Working Temperature : 0° C à 50° C Storage temperature : -10° à 60° Humidity 5% to 90% RH (Not Condensed)
Dimensions	174 (L) x 120 (H) x 62 (P)
Weight	0.632 kg
Wall fixations	WB-4NTR : embedded wall case ONW-4NTR : Wall support
Supplied accessories	1 pc table base 1 pc network soft flat RJ 45 cable of 2m 1 pc Power supply 100-240 AC - 12 VDC , 1 Amp 1 Pc bag containing: 1 camera shutter and 4 screws 13.4 mm for the TACTUM 4 NTR remote control fixation on the wall embedded case WB-4NTR.
Optional accessories	TN232 cable IR VIEC 3501F or VIEC 3502F transmitters In wall mounting accessories : WB-4NTR On wall mounting : ONW-4NTR
VERSIONS (colors)	TACTUM 4NTR A Anthracite body TACTUM 4NTR W White body

E. Warranty



WARNING:

Risk of explosion if battery is replaced by an incorrect type.

Dispose of used batteries according to the instructions and local regulations.

1- VITY Warranty

VITY Technology Headquarters, France and its subsidiary VITY Asia, warrant their products any defects in materials and workmanship for a period of 2 years from the date of the invoice. This warranty concerns products manufactured by VITY Technology. A return material authorization (RMA) must be obtained from VITY before products are returned for service. This authorization can be obtained on the website of vity : www.vity.com and have to be returned by fax to VITY - +33 297 89 20 10. In the case of product is distributed by Vity Technology, the applicable warranty is the warranty of the manufacturer and can be less or more than 2 years. This warranty will be specified on the invoice. Warranty of TACTUM 4NTR: 2 years

2- What This Warranty Does Not Cover

This warranty does not apply to (a) any VITY product that has been modified, altered or repaired by an unauthorized agent or improperly transported, stored, installed, used, or maintained; (b) damage caused by acts of nature, including flood, erosion, or earthquake; (c) damage caused by a sustained low or high voltage situation, a polarity reversed or by a low or high voltage disturbance, including brownouts, sags, spikes, or power outages; or (d) damage caused by war, vandalism, theft, depletion, or obsolescence.

3- Disclaimer of Other Warranties

The warranties contained in Section 1 are the exclusive warranties given by VITY and supersede any prior, contrary or additional representations, whether oral or written. VITY disclaims and excludes all other warranties – whether express, implied, or statutory.

4- Buyer's Exclusive Remedies for Any Nonconformity

If a VITY product fails to conform to the warranties in Section 1, Buyer must notify VITY within a reasonable time and in no event more than thirty (30) days after the discovery of the nonconformity, and VITY will repair any nonconforming products or components.

5- Application of the warranty

During the period of warranty, VITY Technology will repair the defective units free. The defective products must be sent to your expenses to the VITY Technology's offices (56850 Caudan- France) with a RMA document explaining the breakdown. The repaired units will be turned over to our expenses with the recipient. Apart from the period of warranty, VITY Technology will repair the defective units in its offices at Caudan, and the cost of repair will be the responsibility of the customer. In the case of the defected product was bought to a Vity subsidiary or a Vity distributor, you have to return it directly to them.

6- Exclusion of Consequential and Incidental Damages.

Vity shall be not liable under any circumstances for consequential or incidental damages including, but not limited to, labour costs or loss of profits arising in connection with the use of or the inability to use Vity products.

7- Transport Damage

VITY will not be responsible for items damaged during shipment to or from VITY. The shipping carrier is responsible for items damaged during shipment.

8- No Modifications

This warranty may not be modified except in writing by an authorized VITY officer.

9- Other Notice

VITY reserves the right to modify or discontinue designs, specifications, warranties, prices, and policies without prior notice.

Federal Communication Commission Interference Statement

This device complies with Part 15 of the FCC Rules. Operation is subject to the following two conditions: (1) This device may not cause harmful interference, and (2) this device must accept any interference received, including interference that may cause undesired operation.

This equipment has been tested and found to comply with the limits for a Class B digital device, pursuant to Part 15 of the FCC Rules. These limits are designed to provide reasonable protection against harmful interference in a residential installation. This equipment generates, uses and can radiate radio frequency energy and, if not installed and used in accordance with the instructions, may cause harmful interference to radio communications. However, there is no guarantee that interference will not occur in a particular installation. If this equipment does cause harmful interference to radio or television reception, which can be determined by turning the equipment off and on, the user is encouraged to try to correct the interference by one of the following measures:

- Reorient or relocate the receiving antenna.
- Increase the separation between the equipment and receiver.
- Connect the equipment into an outlet on a circuit different from that to which the receiver is connected.
- Consult the dealer or an experienced radio/TV technician for help.

FCC Caution: Any changes or modifications not expressly approved by the party responsible for compliance could void the user's authority to operate this equipment.

This transmitter must not be co-located or operating in conjunction with any other antenna or transmitter.

Radiation Exposure Statement:

This equipment complies with FCC radiation exposure limits set forth for an uncontrolled environment. This equipment should be installed and operated with minimum distance 20cm between the radiator and your body.