

WELCOME!

Thank you for choosing **In&motion** technology.

The In&box is the detection device required to make the airbag system work and is only compatible with IN&MOTION airbag systems.

This manual explains how to use this product correctly.

For any questions regarding the In&box airbag system and its technology, **please contact the IN&MOTION customer service, indicating your In&box number:**

✉ customer@inemotion.com

📞 Find the phone number of your country on our website www.inemotion.com

STAY TUNED!



In&motion



@Inandmotion



In&motion



@Inandmotion

The In&box is designed to be used only with compatible products integrating the In&motion airbag system. Do not use with any other product or any other application that is not mentioned in the user manual supplied with the product integrating the In&motion airbag system.

Each algorithm is designed to suit to a specific application (use on street, track). Make sure to activate the detection mode dedicated to your application to benefit from the best protection in case of a fall or accident.



OPERATING A MOTORCYCLE AND RACING ARE INHERENTLY DANGEROUS ACTIVITIES THAT CAN RESULT IN DEATH, BRAIN DAMAGE, PARALYSIS OR SERIOUS PERSONAL INJURY. YOU ASSUME THE RISK OF INJURY OR DEATH WHENEVER YOU ARE OPERATING A MOTORCYCLE.

The In&box and associated airbag system are designed to reduce certain of those risks in defined conditions, but they cannot eliminate all risks or insure against injury or death even in situations where the system performs as intended.

Further, excessive speed or other violation of traffic laws or user error can result in accident situations beyond the capacity of the system to minimize or eliminate the risks of injury.

IF YOU DO NOT UNDERSTAND OR APPRECIATE THE DANGER OF THESE ACTIVITIES, PLEASE REFRAIN FROM ALL MOTORSPORTS ACTIVITY AND FURTHER USE OF IN&MOTION AIRBAG SYSTEM.



Always turn off your airbag system when using other transportation or when the airbag product is not being worn (turn off the In&box and/or remove it from the product).

Before using your airbag system, please carefully read the safety instructions included in this manual and in the user manual supplied with the product integrating the In&motion airbag system.

IN&BOX

User Manual 2019 - v4

Quick Start Guide p.26

In&box Basics..... p.27

Getting Started p.28

User Manual..... p.32

General Overview..... p.32

In&box Operation..... p.33

Mobile App..... p.37

Technical Information..... p.38

Charging..... p.38

Technical Characteristics p.38

Recycling..... p.39

Certifications p.39

Warnings p.40

In order to get the latest updated version, please refer to the support section in the www.inemotion.com website (version number indicated at the end of this manual).

QUICK STARTGUIDE

CONTENTS



In&box: In&motion airbag system detection and triggering device containing the sensors and battery



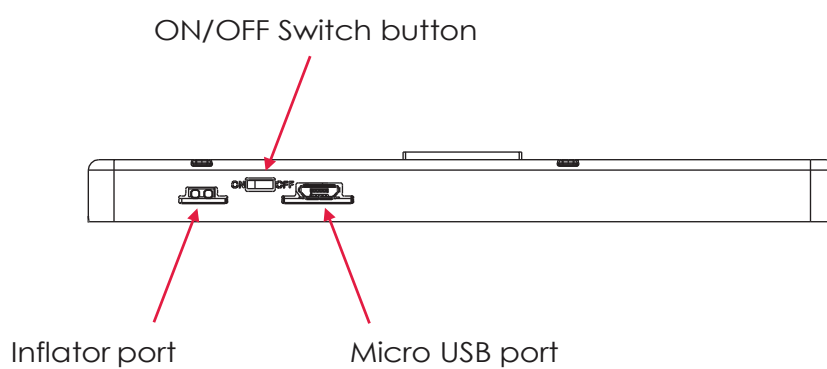
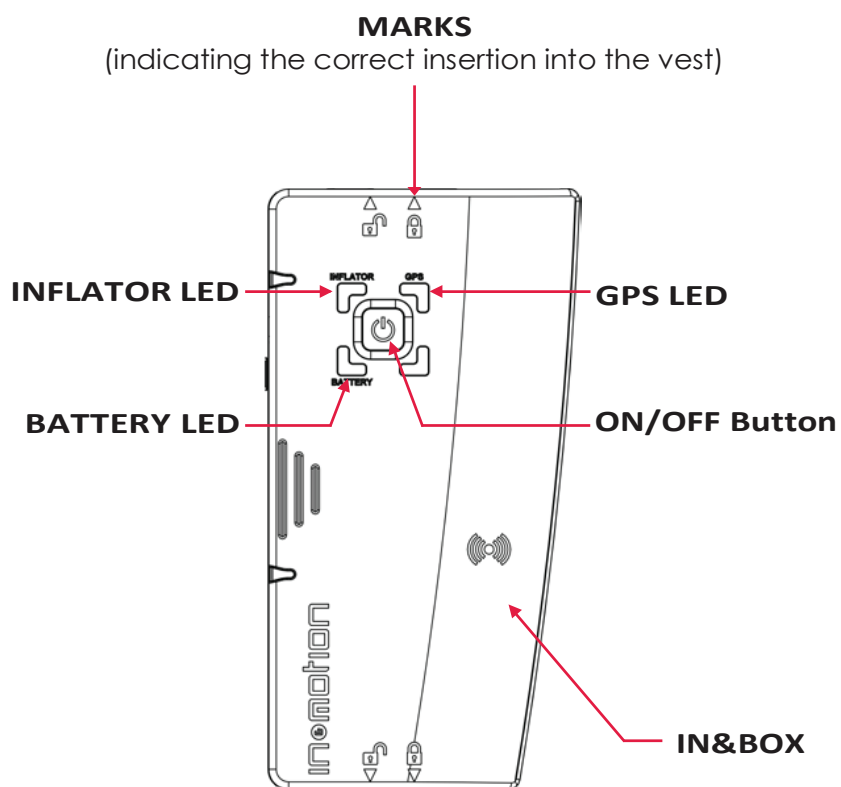
Standard USB cable



In&box User Manual

The user manual dedicated to the airbag system is supplied with the product integrating the In&motion airbag system.

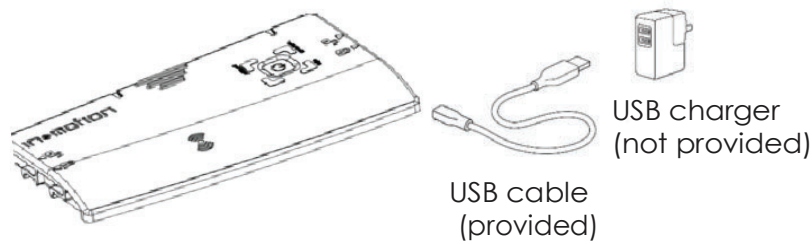
IN&BOX BASICS



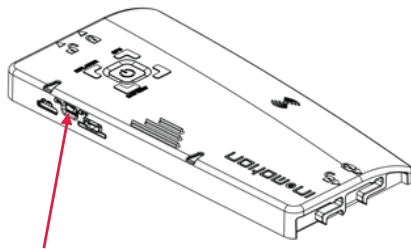
GETTING STARTED

#1 CHARGE THE IN&BOX

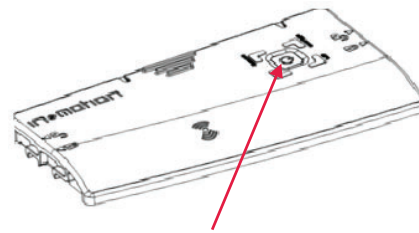
Use the USB cable included in your package, with a USB charger (not provided).
For recommendations regarding the USB charger (not supplied), please refer to the “**Charging**” section of this manual.



#2 TURN ON YOUR IN&BOX



Push the switch button
ON



If the switch button is already ON,
quickly press twice on the central
button.



The In&box must be activated before use on
my.inemotion.com in order to be functional.

#3 ACTIVATE YOUR IN&BOX

For the first use only, activate your In&box and subscribe to an In&motion offer on my.inemotion.com.

1. Go to my.inemotion.com
2. Create your user account.
3. Activate your subscription to the In&motion club: choose your offer and payment method.
4. Download the mobile app «**My In&box**»* (available for iOS and Android).
5. Pair your In&box to your user account by following the mobile app instructions.
6. Your In&box is ready to be used!

Once activated, the In&box is autonomous and does not need to be connected to the mobile app to be functional.



Watch our tutorial video on our Youtube channel to learn more about the activation procedure : <http://bit.ly/InemotionTuto>

** Your mobile phone must be compatible with BLE (Bluetooth Low Energy) in order to pair your In&box.*

Check the list of compatible phones in the “App” section of this manual. If you don’t have a compatible phone, please follow the manual activation procedure available on our website my.inemotion.com



The In&box must be activated before use on my.inemotion.com in order to be functional.

#4 CONFIGURE YOUR WI-FI ACCESS POINT

Regularly connecting your In&box to your Wi-Fi access point is really important in order to always benefit from the latest updates.

It is essential to connect at least once a year for yearly subscriptions and once a month for monthly subscriptions. If not, the In&box will be automatically blocked and will no longer work until the next connection.

From the first use, configure your Wi-Fi access point using the mobile app.

Once configured, your In&box will automatically connect to your Wi-Fi access point as soon as it is plugged into a power outlet and is charging. The latest updates will download automatically.

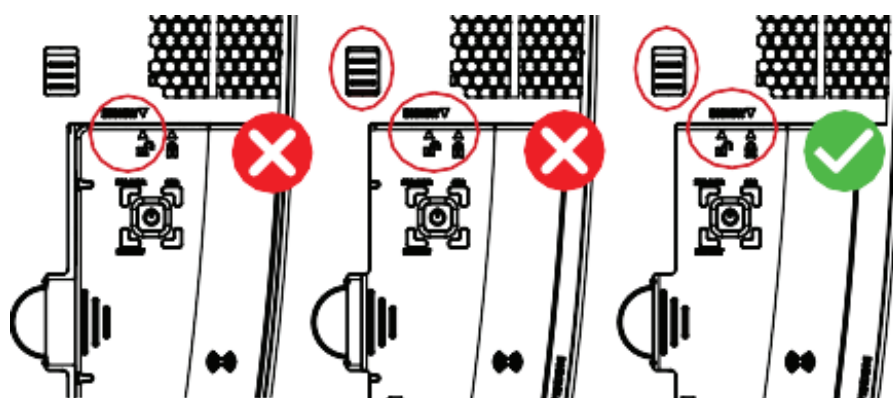
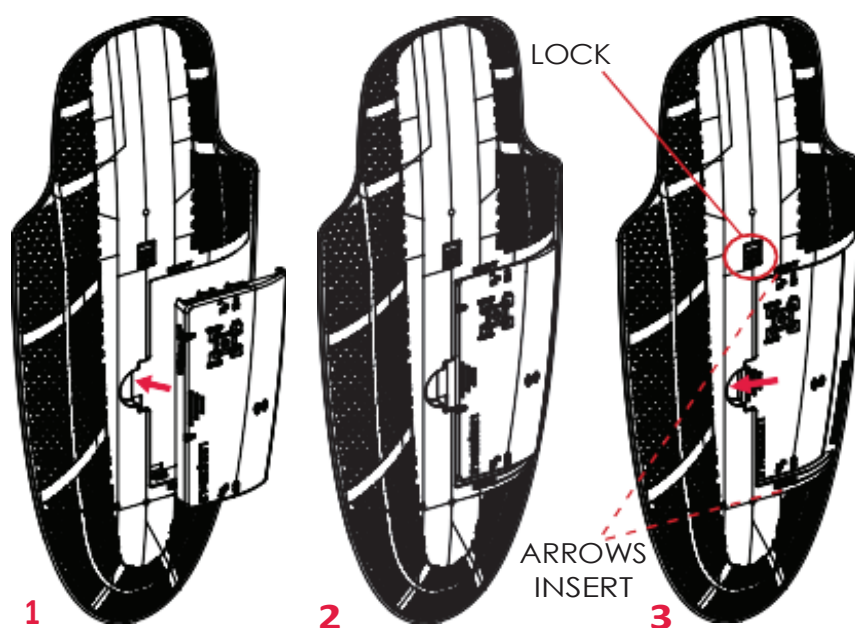
Warning, your In&box needs to be turned on!



For more details about configuring your Wi-Fi network, please refer to the “**Updates**” section of this manual or watch the tutorial video available on our Youtube channel:
<http://bit.ly/InemotionTuto>

#5 INSERT YOUR IN&BOX INTO THE SHELL

1. Place the In&box into position.
2. The arrows indicated on the In&box **lock open** (up and down) must be aligned with the INSERT arrows indicated on the shell.
3. Using the lock, push the In&box to the left side to clip it into place.
The arrows indicated on the In&box **lock closed** must be aligned with the INSERT arrows indicated on the shell.
Warning, make sure the red locked marking is not visible.



**In&box incorrectly
inserted**

**In&box well
inserted**

#6 WEAR YOUR AIRBAG PRODUCT

To obtain the specifications related to your In&motion airbag system, please refer to the user manual provided with your product integrating the In&motion airbag system.

USER MANUAL

GENERAL OVERVIEW

#1 ACQUIRE AN AIRBAG SYSTEM

To acquire a product integrating the In&motion airbag system, follow these steps:

1. Buy the product integrating the In&motion airbag system from a reseller. The In&box is available with the product in shops.
2. Subscribe to a membership (lease or buy) on my.inemotion.com
3. Activate your In&box. Once activated, the In&box is ready to be used all over the world for the entire duration of the membership selected.



The In&box must be activated before use on my.inemotion.com in order to be functional.

#2 ACTIVATE YOUR SYSTEM



Watch our tutorial video on our Youtube channel to learn more about the activation procedure: <http://bit.ly/InemotionTuto>

Follow the procedure below to activate your In&box:

1. Go to my.inemotion.com
2. Create your user account
3. Activate your subscription: choose a membership and plan
4. Download the «My In&box»* mobile app (available on Google Play or App Store)
5. Pair your In&box to your user account by following the mobile app instructions.
 - Connect to the mobile app with the user account you created earlier.
 - Turn on your In&box and activate Bluetooth on your phone.
 - Enter your airbag product's Serial Number (SN) located on the label inside your airbag product.

- The pairing process starts: follow the instructions on the app.

Your In&box is ready to be used!

** If your phone is not compatible or if you cannot download the app, go to our website www.inemotion.com and follow the manual activation procedure. You will find the list of compatible phones in the “App” section of this manual.*

#3 IN&MOTION SUBSCRIPTION AND MEMBERSHIPS

For any question regarding the In&motion subscription and memberships, please refer to our website my.inemotion.com and to the general terms of sale and lease available during the subscription process or on our website.

#4 AFTER-INFLATION PROCESS

If inflation is needed, the procedure for checking and reactivating your airbag system is available in the user manual provided with the product integrating the In&motion airbag system.



You will also find this procedure on our tutorial video available on our Youtube channel:

<http://bit.ly/InemotionTuto> as well as in the mobile app «[My In&box](#)».

In case of damage or anomaly during the after-inflation process, do not use your airbag product and contact your local reseller.

IN&BOX OPERATION

#1 CHARGE THE IN&BOX

Connect the In&box to a USB cable and plug into a charger (not provided).
Recommendations for charging are :

Electrical charging characteristics: Input: 5 V  2 A

Compatible charger: Use a EN60950-1 or EN62368-1 compliant USB charger.

In&box battery duration is approximately 20 hours in continuous use.

This corresponds to approximately 1 week of autonomy in normal use (daily commute*).

In&motion recommends switching off your In&box with the central button when it is not being used for several consecutive days to save the battery life.

** Around 2h riding per day and “automatic standby” function the rest of the day.*

#2 IN&BOX FUNCTIONS

The In&box has three different functions:

1. Activation using the ON/OFF Switch Button

You can use the button located on the left side of your In&box to turn it on for the first use only. Make sure to push the button to ON before the first use. **Don't turn the In&box off using this left side button without double clicking to switch it off before. Never turn off your In&box by the side switch button during an update (upper leds blinking blue).**

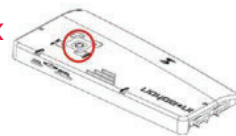


2. Press central button twice quickly

Once the In&box is turned on using the switch button, you will just have to double click quickly on the central button to turn your In&box on and off without removing your In&box from its position.



Make sure to turn your In&box off when using any other transportation.



3. Automatic standby function

Thanks to this function, your In&box will switch to standby function automatically if it remains motionless for more than 5 minutes.

When the In&box detects motion, it turns on automatically eliminating the need to turn it on or off! However, the In&box must be placed on a completely motionless stand.

Make sure to turn your In&box off when using any other transportation (car, bus, airplane, train or using a motorcycle but not wearing the airbag system).

#3 LIGHTING CODE

Below is a list of different LED colors that you may see on your In&box.

Warning, this lighting code can change and evolve over time depending on the usage.

In order to be aware of the latest evolutions, please refer to our website www.inemotion.com

LED INFLATOR (IN&BOX IN VEST)



Solid green:

Inflator connected **(airbag functional)**



Solid red:

Inflator not connected **(airbag not functional)**



No light:

In&box off **(airbag not functional)**

GPS LEDS



Solid green:

GPS active
(after a few minutes outside)



No light:

GPS inactive

INFLATOR AND GPS LEDS



When the two upper LEDs are **flashing red:**



Airbag not functional

- Check your In&motion subscription
- Connect your In&box to Wi-Fi or to your mobile app
- Contact In&motion if the problem continues

**Solid blue or flashing blue:**

In&box synchronizing or updating. **Never turn off your In&box by the side switch button when the LEDs are blue as it could disrupt the update process with risks for the In&box software!**

BATTERY LED**Solid red:**

Less than 30% battery (about 5 hours of usage time remaining)

**Flashing red:**

Less than 5% battery
Charge your In&box!

**No light:**

Battery charged (30 to 99%) or In&box off

**Solid blue:**

Battery charging (In&box plugged in)

**Solid green:**

Battery charged to 100% (In&box plugged in)

#4 UPDATES

It is essential to connect your In&box regularly in order to continue to benefit from the latest updates. From the first use, configure your Wi-Fi access point using the mobile app:

1. Connect to the In&motion «My In&box» mobile app.
2. Turn your In&box on.
3. Follow the directions on the app to configure the product.

Once configured, your In&box will automatically connect to your **Wi-Fi access point** as soon as it is plugged into a wall charger and is charging. The latest updates will download automatically.

Warning, your In&box must be turned on in order to connect to Wi-Fi. When updating, the In&box is no longer connected to the mobile app.

WI-FI CONNECTION



The two upper LEDs are **flashing blue alternately**: the In&box is seeking for a connection to your Wi-Fi access point.



The two upper LEDs are **flashing blue at the same time**: the synchronization and updating process is in progress.

Warning, do not use the side switch button to turn the In&box off when the LEDs are blue as it could disrupt the update process with risks for the In&box software!

Compatible Wi-Fi access points:

Wi-Fi b/g/n with WPA/WPA2/WEP protection.



For more information, you can watch our In&box activation and Wi-Fi configuration tutorial video on our In&motion Youtube channel: <http://bit.ly/InemotionTuto>

If you do not have a compatible mobile phone, please refer to our website my.inemotion.com and follow the manual procedure to configure your Wi-Fi access point.

MOBILE APP

The mobile app «My In&box» is available on Google Play and App Store.

For the first use only, connect to the app using the login and password created earlier when creating your user account. Once activated, the In&box is autonomous and does not need to be connected to the mobile app to be functional.

This app is currently only compatible with the following mobile phones:

- iOS as of version 11.4
- Android versions 5, 6, 7 and 8 (Lollipop, Marshmallow, Nougat, Oreo)
- Compatible Bluetooth Low Energy chip

TECHNICAL INFORMATION

CHARGING

Electrical characteristics: Input: 5 V  2 A

Compatible charger: Use a EN60950-1 or EN62368-1 compliant USB charger.

Altitude restrictions: Above 2000 metres (*6561 feet*) high, make sure that your charger is approved for this altitude before charging your In&box.

Battery replacement: Do not try to replace the In&box battery by yourself, you could damage the battery, which may in turn lead to overheating, fire and injury. Your In&box Li-polymer battery must be replaced or recycled by In&motion: it must be recycled or scrapped separately from general household waste and in accordance with your local laws and regulation.

Charging time: In optimal conditions, the time to charge the battery completely is about 3 hours.

TECHNICAL CHARACTERISTICS

Operating temperature: from -20 to 55°C (*-68 to 131 °F*)

Charging temperature: from 0 to 40°C (*32 to 104 °F*)

Storage temperature: from -20 to 30°C (*-68 to 86 °F*)

Relative humidity: from 45 to 75%

Altitude: Below 5000 metres (*16 404 feet*)

Out of those limits, the In&box may function improperly.

RF Power

In charge : 2.4GHz-2.472GHz (<250mW / 50mW EIRP for WIFI)
2.4GHz-2.483GHz (<10mW)

Out of charge: 2.4GHz-2.483GHz (<10mW)

Bluetooth LE mode

Radio Frequency (RF) Exposure Compliance of Radiocommunication portable apparatus

This device complies with FCC and ISED Canada RF radiation exposure limits set forth for general population (uncontrolled exposure). This device must not be collocated or operating in conjunction with any other antenna or transmitter.

Conformité à l'exposition aux champs RF des équipements radio portables

Cet appareil est conforme aux limites FCC et ISDE Canada concernant l'exposition aux rayonnements RF établies pour le grand public. (Environnement non-contrôlé). Cet émetteur ne doit pas être co-situé ou fonctionner conjointement avec une autre antenne ou un autre émetteur.

WIFI mode

Radio Frequency (RF) Exposure Compliance of Radiocommunication for mobile Apparatus

To satisfy FCC and IC RF Exposure requirements for mobile devices, a separation distance of 20 cm or more should be maintained between the antenna of this device and persons during operation. To ensure compliance, operation at closer than this distance is not recommended. This transmitter must not be co-located or operating in conjunction with any other antenna or transmitter.

Conformité à l'exposition aux champs RF des équipements radio mobiles

Pour satisfaire aux exigences FCC et IC concernant l'exposition aux champs RF pour les appareils mobile, une distance de séparation de 20 cm ou plus doit être maintenu entre l'antenne de ce dispositif et les personnes pendant le fonctionnement. Pour assurer la conformité, il est déconseillé d'utiliser cet équipement à une distance inférieure. Cet émetteur ne doit pas être co-situé ou fonctionner conjointement avec une autre antenne ou un autre émetteur.

In&box waterproofness: Excessive exposure to water will cause the vest to function improperly. It is recommended for use only under a waterproof protection garment designed for two-wheeled motor vehicle users.

Warning, it has not been designed to be submerged.

RECYCLING

Instructions regarding the product's end-of-life:



The symbol opposite indicates that in accordance with your local laws and regulations, you must dispose of this product/battery separately from household waste.

When the product's validity expires, please bring it to a collection system designated by local authorities.

tion and recycling of your product and/
g disposal will help preserve natural resources and ensure that it is recycled to protect human health and the environment.

CERTIFICATIONS

CE certification:

In&motion declares that the In&box complies with the essential requirements and other relevant provisions of the RED directives (Radio Equipment Directive) 2014/53/EU and RoHS 2011/65/EU.

A copy of the Declaration of Conformity for the European Union is available at the following address:

https://my.inemotion.com/documents/moto/declaration_of_conformity.pdf?v=1545323397

FCC / ISED certification:

Changes or modifications not expressly approved by *IN&MOTION* could void the user's authority to operate the equipment.

FCC Part 15 compliance statement

This device complies with part 15 of the FCC Rules. Operation is subject to the following two conditions: (1) This device may not cause harmful interference, and (2) this device must accept any interference received, including interference that may cause undesired operation.

NOTE: This equipment has been tested and found to comply with the limits for a Class B digital device, pursuant to part 15 of the FCC Rules. These limits are designed to provide reasonable protection against harmful interference in a residential installation. This equipment generates uses and can radiate radio frequency energy and, if not installed and used in accordance with the instruction, may cause harmful interference to radio communications. However, there is no guarantee that interference will not occur in a particular installation. If this equipment does cause harmful interference to radio or television reception which can be determined by turning the

equipment off and on, the user is encouraged to try to correct interference by one or more of the following measures:

- Reorient or relocate the receiving antenna.
- Increase the separation between the equipment and receiver.
- Connect the equipment into an outlet on circuit different from that to which the receiver is connected.
- Consult the dealer or an experienced radio/TV technician for help.

Licence-Exempt Radio Apparatus (ISED)

This device contains licence-exempt transmitter(s)/ receiver(s) that comply with Innovation, Science and Economic Development Canada's licence-exempt RSS(s). Operation is subject to the following two conditions:

1. This device may not cause interference.
2. This device must accept any interference, including interference that may cause undesired operation of the device.

Appareils radio exempts de licence (ISDE)

L'émetteur/récepteur exempt de licence contenu dans le présent appareil est conforme aux CNR d'Innovation, Sciences et Développement économique Canada applicables aux appareils radio exempts de licence.

L'exploitation est autorisée aux deux conditions suivantes :

- 1. L'appareil ne doit pas produire de brouillage;*
- 2. L'appareil doit accepter tout brouillage radioélectrique subi, même si le brouillage est susceptible d'en compromettre le fonctionnement.*

WARNINGS

#1 IN&MOTION AIRBAG SYSTEM USE

The In&motion airbag system is a new, intelligent device that must be used only for the application to which it is dedicated, depending on the detection mode dedicated to this practice.



Do not use it for any other application that would not correspond to the detection mode selected (use on street, track).

This system is designed to offer comfort and high protection, though no product or protection system can offer complete protection from injury or damage to individuals or property in case of fall, collision, impact, loss of control or otherwise.

If the user engages in excessive speed, violates traffic laws, or otherwise operates the motorcycle in an unsafe manner the ability of the device to protect the user and avoid or eliminate injury may be eliminated.

Any modification or improper use may negatively impact the system performance. Do not, under any circumstances, modify your airbag system, the In&box or its components in any way. Only the parts of the body covered by the protection may be protected against impact. The In&motion airbag system can never be considered as a substitute for protective equipment such as helmets, goggles, gloves, or any other protection device.

#2 WARRANTY

To the fullest extent permitted by applicable law, the In&box is provided to our dealers or customers "as is" and "as available", with all faults, and, except as expressly provided for in this manual, In&motion hereby disclaims all warranties of any kind, whether express, implied, statutory or otherwise, including without limitation warranties of merchantability, fitness for a particular use, and satisfactory quality.

Any warranty required by applicable law is limited to 2 years from the date of purchase (for In&box acquisitions) and applies only to the original user. For In&box leases, a dedicated customer service representative is available allowing In&box exchanges if the problem cannot be solved remotely. This warranty is limited to the original user.

The In&box is personal and cannot be lent or sold. This warranty does not apply in the event of abuse, negligence, carelessness or modification, improper transport or storage, improper installation and/or adjustment, misuse, or if the airbag system is used in any way other than is intended and not in compliance with the present manual.

Do not dismantle or open the In&box. Do not place the In&box under water. Do not bring the In&box close to a source of heat. Do not put the In&box in a microwave.

Do not repair or replace any part or accessory with a part or accessory that is not an original In&motion item covered by these warranty terms.

Do not have the In&box repaired or handled by any party other than In&motion.

In&motion makes no other expressed warranties, except stipulated otherwise.

#3 DETECTION CONDITIONS

User security is In&motion's primary concern. As part of our obligation of means, we strive to implement all the technological solutions that we have available so that the In&box detection system can ensure the best degree of protection and comfort.

However, the user of this protection system is responsible for his/her protection, and the detection system is developed by In&motion to provide optimal protection only during responsible and respectful behaviour on the road. In&motion does not guarantee the absence of damage. The In&motion detection system cannot make up for behaviour that is dangerous, disrespectful or in conflict with road safety regulations.

1. Use modes

In&motion has developed two detection modes:

- **Street mode:** use on roads;
- **Track mode:** use on regulated closed circuits.

The selection of the detection mode is carried out under the sole responsibility of the user who must make sure before each use that he/she has selected the right detection mode according to his/her use.

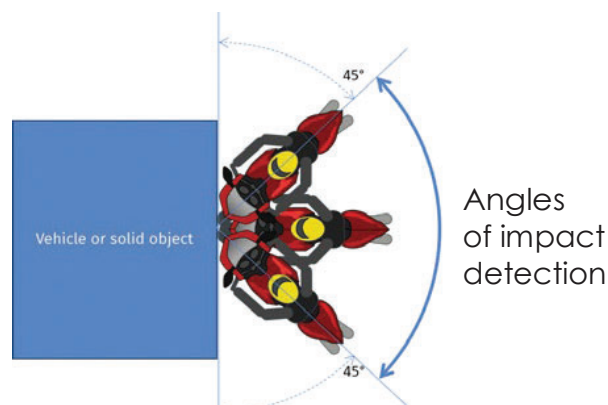
The detection modes are designed to address risks specific to the intended use environment. As a result, the modes offer protection against different events (e.g. frontal collision in street riding mode) and care should be taken to make sure that a mode that properly applies to actual use is selected. A failure to do so, may compromise the protections provided by the device.

The user will be able to select, change and check the detection mode through the «My In&box» mobile app. *If you do not have a compatible mobile phone, a manual procedure is available on my.inemotion.com website.*

2. Detection case in street mode

Motorcycle impact against a vehicle or solid obstacle

The In&motion detection system (the "In&box") can detect a fall when a powered two-wheeler hits a vehicle at a speed higher than 25 km/h (16 mph), with an angle between 45° and 135° at the time of impact.



3. Detection case in track mode (regulated circuit)

In order to benefit from the "track" mode detection cases, the user must activate the "track" mode first by subscribing to the dedicated offer. This dedicated offer is available on the In&motion website.

High side

The In&motion detection system ("In&box") can detect a "high side" type fall: when the motorcyclist is propelled in the air and towards the front of his/her motorcycle after a tire stall at a speed higher than or equal to 50 km/h (31 mph).

Low side with rolls

The In&motion detection system ("In&box") can detect a "low side" with rolls: a slip on the side following the motorcycle's loss of grip, followed by rolls at a speed higher than or equal to 50 km/h (31 mph).

4. General: street mode and track mode

The In&motion detection system is upgradeable and the detection algorithms can be updated thanks to the anonymous collection of user data.

For any information regarding the data collected by In&motion, please refer to our Privacy Policy available on our website www.inemotion.com or on the «My In&box» mobile app. Thus, the detection conditions applicable to a given date can be downloaded from the In&motion website. The user is required to visit the website regularly in order to download and learn about the latest detection conditions.

[Warning] We remind you that the user must respect speed limits and the rules of the road in force in the country in which he/she is riding.

[Warning] The street mode detection system works for speeds above 25 km/h (16 mph).

[Warning] The detection system uses the In&box's GPS signal to optimise triggering cases. When the

system doesn't detect or detects the GPS signal poorly, the system's degree of detection is not at the level of performance achieved with an optimal GPS signal—thus airbag triggering is not guaranteed.

[Warning] The detection system only works if the In&box is correctly charged.

The lighting code of the In&box LEDS allows the user to make sure that the In&box has been correctly charged. Battery consumption needs to be monitored by the user to ensure that the trigger system remains active during the journey.

[Warning] The detection system detects abnormal movements that are likely to result from a falling motorcyclist. In some extreme situations, the system may be triggered without the motorcyclist falling. Since May 2017, the street mode detection system has been proven over 3 million kilometres by thousands of users. As of April 31st*, 2019, there have been no cases of unwanted inflations leading to falls reported by users to In&motion.

** date of edition of this version of the user manual*

In&motion cannot be held responsible in case of an unwanted trigger.

In&motion airbag system and air transportation



Always turn off your airbag system before using air transportation and remove In&box from the airbag system before flying!

In&motion recommends keeping this user manual with the airbag system and with the In&box while travelling, especially by plane.

You can download the documentation corresponding to air transportation in the support section of the www.inemotion.com website.

In&motion cannot be held liable in the event an airline refuses to transport the product by airplane.