

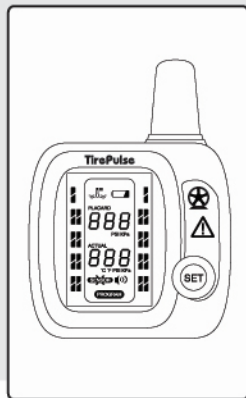
## 2-3. Display

### Receiver Module

The PMS-2000 consists of a Multifunction Display which sets easily and LED receiver which are conveniently monitoring a tire's condition within easy view.

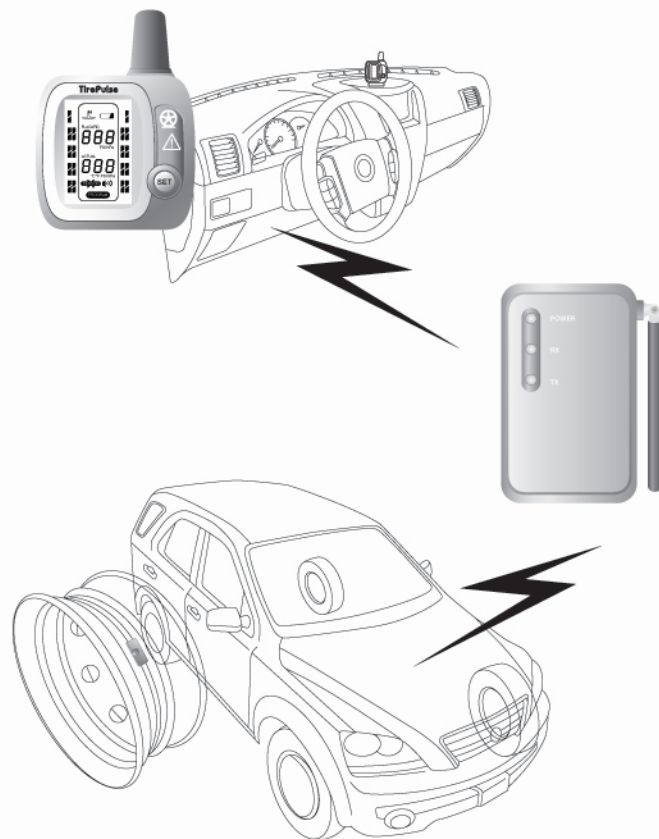
This display helps a driver check every tire's information.

Wheel mounted sensor/transmitters inside each tire measure contained air pressure and temperature and transmit this data to the receiver.



No	Description	Specification
1	Center Frequency	433.92 MHz
2	Ambient Temperature	-20° C ~ +85° C
3	Receiver Sensitivity	-108 dBm typical
4	LCD Specification	Max.18-wheel Display
5	Dimension (W+H+D) (mm)	65 * 90 * 29 (including Antenna)
6	Weight	70 g
7	Operating Voltage	DC 12V (Cigar Jack)

### TPMS principle operation

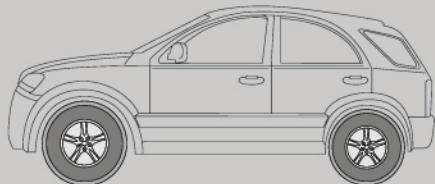


Tire Pressure Monitoring System

**TirePulse**  
PMS-2000

# Chapter 03

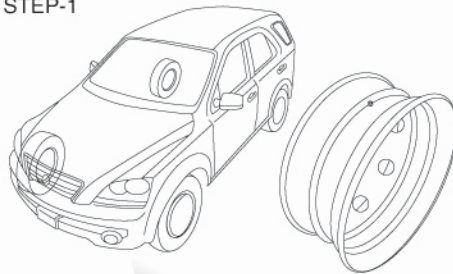
## Installation



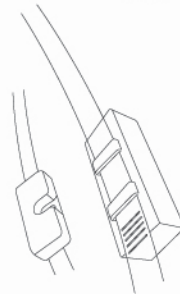
### 3-1. Install a transmitter module-wheel Band

1. Separate tire from wheel
2. Connect steel band with the transmitter.
3. Adhere to wheel.

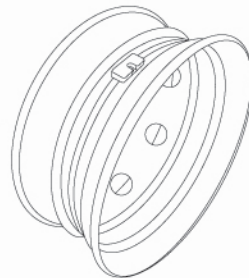
#### ▶ STEP-1



#### ▶ STEP-2

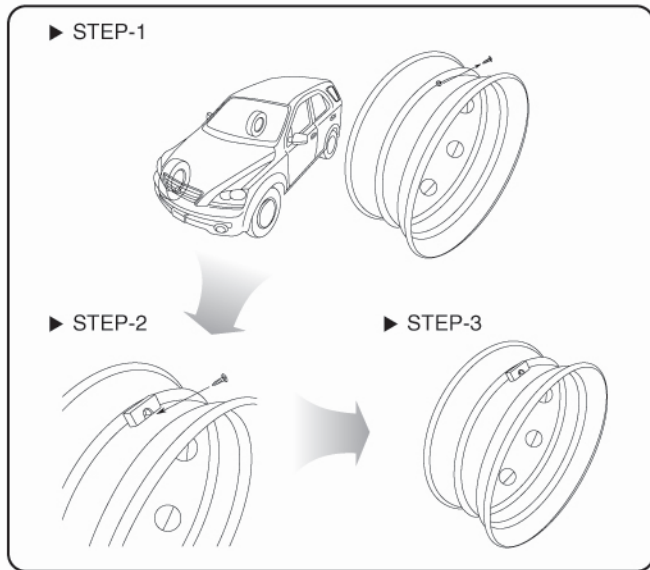


#### ▶ STEP-3



**Option. Install a transmitter module- valve Stem**

1. Take off a Valve Stem screw from wheel.
2. Insert the transmitter and fix up screw.
3. Put a tire on a wheel.

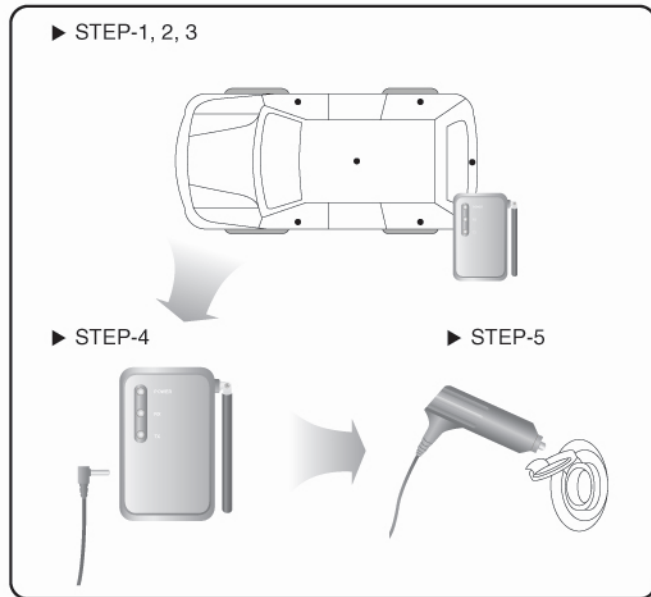


caution

For sensor/transmitter module corrective installation, qualified personnel should install properly this according to the instructions here. Here doesn't show general exchange of tire, but you need to be careful for no sensor damage.

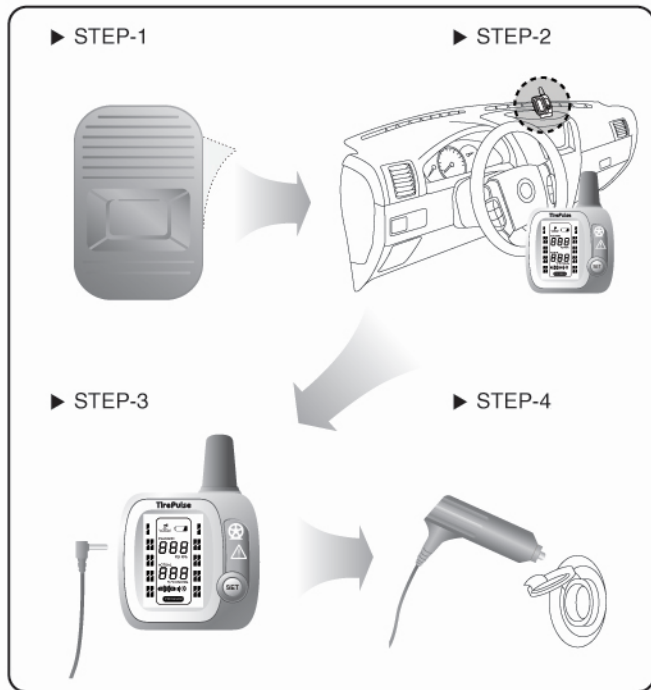
**3-2. Install a Repeater Module**

1. Locate the repeater, making proper position for transmitter signal.
2. Adhere velcro where you want.
3. Fix repeater with velcro.
4. Connect power cable with socket at left side of repeater.
5. Connect power cable's cigar jack with vehicle's socket.



### 3-3. Install a Receiver Module

1. Remove tape film of receiver fixer's bottom
2. Adhere at vehicle's front glass or dash board where you want .
3. Connect power cable with socket at left side of receiver.
4. Connect power cable's cigar jack with vehicle's socket



Tire Pressure Monitoring System

**TirePulse**  
PMS-2000

## Chapter 04 Getting Started

After set up, turn on the starting, receiver and Repeater start to work. LCD blinks and buzz at first. It also display placard pressure and actual pressure. The placard pressure initial value sets to 90PSI and receiver shows the actual pressure value from sensor while whole tire is rotating.

### 4-1. Set Dimension

No	Dimension View			
1	Placard Pressure	PSI	Actual Pressure	PSI
2	Placard Pressure	KPa	Actual Pressure	KPa
3	Actual Pressure	PSI	Actual Temperature	°C
4	Actual Pressure	KPa	Actual Temperature	°C
5	Actual Pressure	PSI	Actual Temperature	°F
6	Actual Pressure	KPa	Actual Temperature	°F

PMS-2000 Receiver shows six unit