

03 AVI Backup Manager

AVI Backup Manager

AVI Backup Manager converts the recorded data into AVI file format to replay the image conveniently using Windows Media Player.



1-1 AVI Backup

To backup recorded data in to AVI format simply double click the AVI Backup Manager icon.

1-2 Selecting Data for Backup

Click [Load Data] from top right of GUI

Select the date you wish to backup



Then click [LOAD] icon.



1-3 Backup by Channels

Select the channel you wish to backup.

Channel icon turns green when selected.



1-4. Backup Time Selection

Enter the time you wish to start backup from Time Bar.
Recorded data is indicated in red.



Click the start time and click [A->B] icon. Start time will automatically appear as below.



Click the end time and click [A->B] icon. End time will automatically appear as below.



※ AVI BackUp Manager can only convert files up to one hour. Backup data time is only indicated when the difference between start time & end time is less than one hour.

1-5 Backup Data Converting

Click [Converting] icon after entering the limits of the backup time in reference.



Select the location of the directory to backup data and click [OK].



AVI Backup Processing



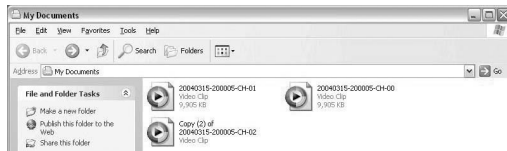
Windows prompt message indicating AVI Converting End will automatically appear. You have successfully converted your data for storage.



1-6 Play Backup Data using Windows Media-Player

Our website offers utilities that users can Download & install AVI Formula Codec V 1.0 from www.intotech.co.kr, DownLoad -> Util section to properly replay stored data.

You can now replay all AVI format data using your Windows Media Player .

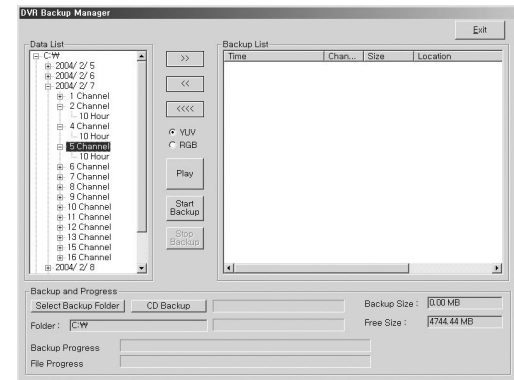


Media Player should replay stored data as seen below.



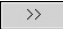
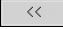

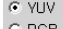
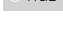

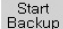

04.Backup Manager

Using Intotech Backup Manager recorded images(* iva. data) can be managed efficiently or quickly backup to CD using this software.



[Backup Manager Detailed Information]

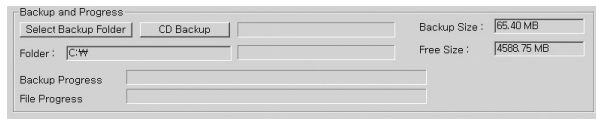
- 1) Backup Manager illustrates recorded data by date, channel and time.
- 2) The following icons are used to help manage your recorded data.

-  : Transfer data to Backup List.
-  : Remove data from Backup List.
-  : Remove all data from Backup List.
-  : Search screen will be displayed in (YUV) screen mode. (Default setting)
-  : Search screen will be displayed in (RGB) screen mode. Graphic Card may not support **YUV** mode **YUV** is the default setting. (Please convert to RGB mode when transferring or removing data .)
-  : Play Backup Data.
-  : Start Backup.
-  : Stop Backup.

Add data to Backup List illustrated below.

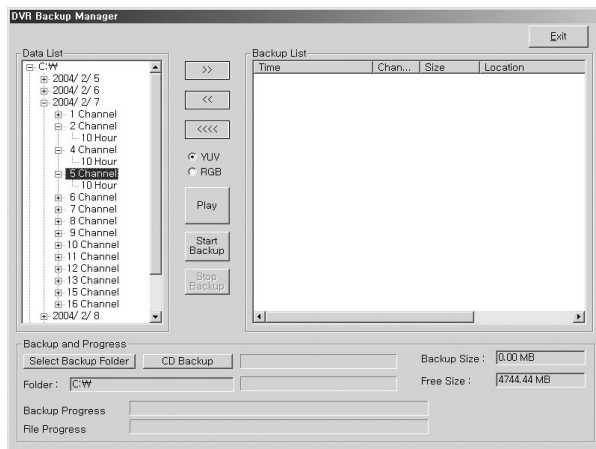
Time	Chan...	Size	Location
2004/02/05	0	1435.20KB	C:\WVADATA\W200402
2004/02/05-15 Hour	2	16.00 MB	C:\WVADATA\W200402
2004/02/05-14 Hour	4	16.00 MB	C:\WVADATA\W200402
2004/02/05-14 Hour	4	16.00 MB	C:\WVADATA\W200402
2004/02/05-14 Hour	4	16.00 MB	C:\WVADATA\W200402

Backup folder & Progress Time Bar is indicated as follows.

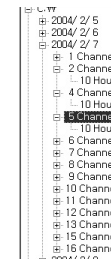


- Select Backup Folder** : Select directory to backup
- CD Backup** : Direct backup to CD (CD-RW required)

1-1 Backup Manager HDD Backup



- 1-2 Click Backup Manager icon to run program.
- 1-2 Select date & time from Data List to Backup.

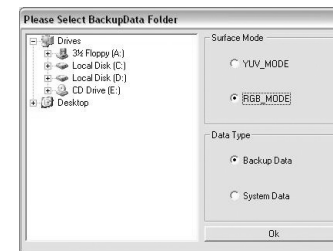


Ex) Indicates 2004/ 2/ 7 CH2 10 o'clock.

- 1-3 Move selected data from Data List to Backup List. Click () icon to move data from Data List to Backup List.



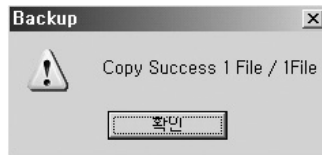
- 1-4 Click(**Select Backup Folder**) icon to setup backup directory.
- 1-5 Choose HDD to backup and click [OK].



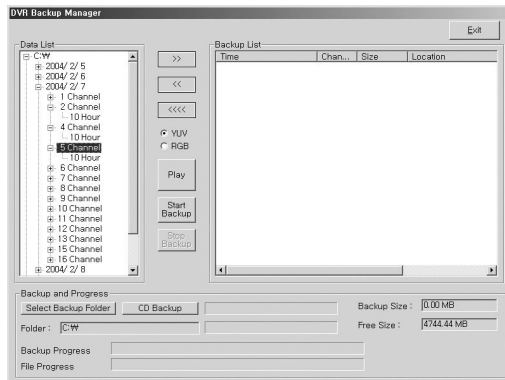
Example selects C: Drive.

1-6 Click () icon to start backup..

1-7 Message is displayed after completion.

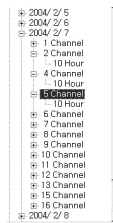


2 CD Backup



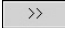
2-1 Click Backup Manager icon and run program.

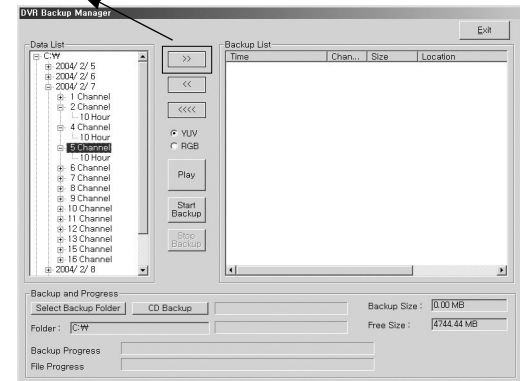
2-2 Select date & time from Data List to Backup.



Ex) Indicates 2004/ 2/ 7 CH2 10 o' dock.

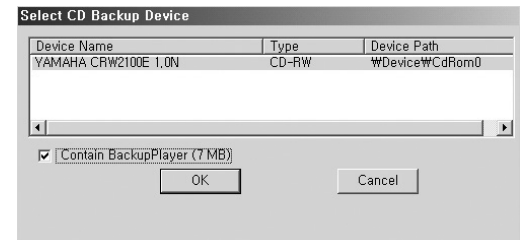
2-3 Move selected data from Data List to Backup List.

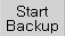
Click() icon to move data.



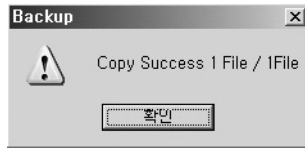
2-3 Click() icon.

2-4 Click [CD - RW] and click [Contain Backup Player].
(NOTE : The Contain Backup Player(7MB) must be checked.)



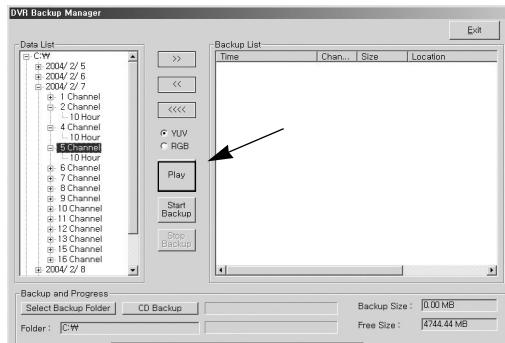
2-5 Click() icon to start backup

2-6 Message is displayed after completion.

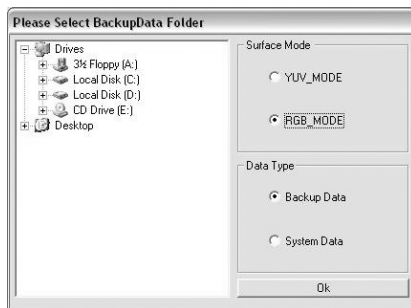


3 Play HDD Backup Data

3-1 Click Backup Manager and run program.



3-2 Click [Play] icon to search Backup Data Directory.



3-3 Select RGB Mode and select directory and Click [OK].

3-4 Search Data screen illustrated below.

a. Recorded data is shown in red.



3-5 Choose date you want to playback and Click [Load].



3-6 Click icon to exit from playback mode and return to Backup Manager.



4. Play CD Backup Data

- Insert CD to CDROM. (Run CDROM Drive -> Backup Player -> Click [] icon.)
- Select CDROM directory and click [OK].
[The following Error Messages appear usually means the following errors.]

[Error Message]

- ※ There is no medium in the burner
: There is no CD inside CD-RW drive.
- ※ If you want to Backup CD. Please reboot or end process 'imap.exe'
: Please reboot PC OR stop 'imap.exe' by force from Windows Task Manager.

- ※ Set CD recorder failed.
 - : Conflict with CD-RW settings.
 - ※ Not Enough Hdd Disk Free Space to Create CD IMAGE
 - : HDD must have enough free space to CD backup data onto CD.
 - ※ The call failed because IMAPI has not been opened with Open.
 - : Your Operating System(O/S) does not support CD Backup.
- If you have any further tech support issues, please contact your local Intotech DVR dealer.

4 NetClient Interface

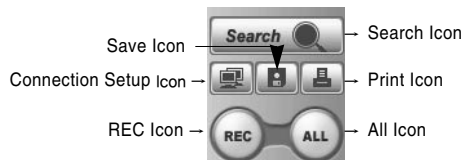
01. Intotech Net-Client Interface

NetClient Program is able to receive images from DVR Server using the Internet. NetClient functions: Display & recording, camera control from remote site and other features that we will illustrated in this document.



1-1 Control Panel

The Control Panel can search program, open connection setup, save & print still images and record server image from remote PC where NetClient is installed.



Search Icon: Runs search program.

Connection Setup Icon:

Run [Connecting & Configuration Management] used for internet access. Run [Modem Connection] used for internet access .

Save Icon: Save selected channels as JPEG file.

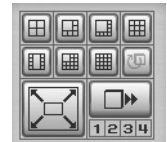
Print Icon: Print the selected channels in various modes.

REC Icon: Record the image of selected channels.

All Icon: Select all channels to record.

1-2 Screen Partition Panel

Support 7 kinds of various screen partition, full-screen and sequence rotation display mode.



1-3 Pan/Tilt Control Panel

Pan / Tilt / Zoom / Focus control is supported from remote site when DVR Server is using Pan/Tilt camera. Control sensitivity can be configured in Control Panel.

Only broadband Internet users can use Pan/Tilt control, Modem users cannot use this feature.

1-4 Network Type Selection Panel

Select [LAN] from Network Type Selection Panel when using broadband connection and Select [Modem] when using Modem.



1-5 Camera Selection Panel

Click specific channel from Camera Selection Panel to enlarge and view image.



1-6 Internet User Real-Time Surveillance

Click [LAN] from [Network Type Selection Panel] and view real-time from remote site. Click [Connection] from [Control Panel] and [Connecting & Configuration Management] screen will appear.

Register the Server IP Address and connect using the registered IP.

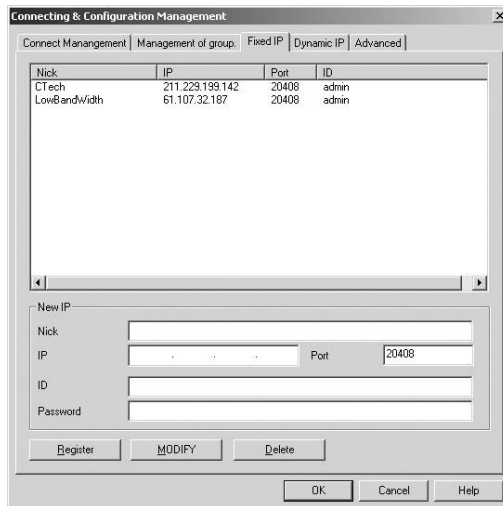
2. Channel Connection

Register the Server and use the registered server to connect to each channel.

2-1 Server Registration

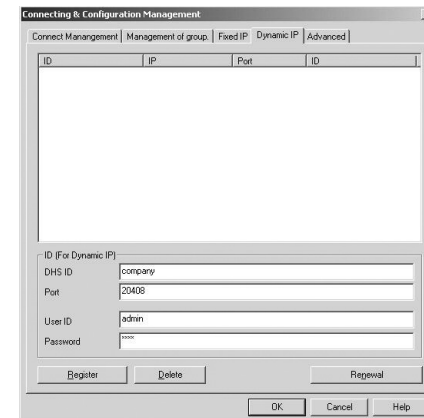
- Server has Fixed IP(Static IP)

Select the [Fixed IP] from [Connecting & Configuration Management] insert the Server Name, IP Address, ID & Password(Insert the ID & Password which is registered in the Server program [User Management].) and click [Register].



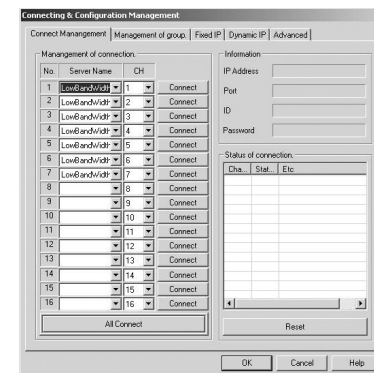
- Server is using Dynamic IP

Register for DHS Service.(<http://www.chainip.com>)*Refer to Annex. Select [Dynamic IP] from [Connecting & Configuration Management] and insert the ID from DHS Server. Insert the ID & Password which is registered in the Server program [User Management] and click [Register].



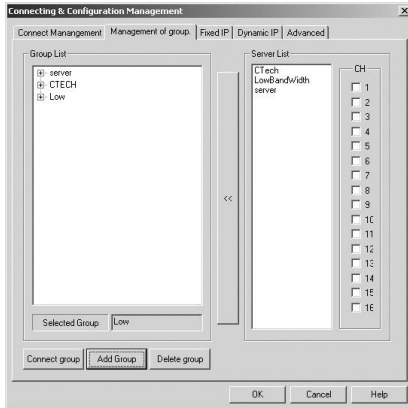
2-2 Connection

Select [Connect Mangement] and insert the Server Name and Server Channel to each camera channel.

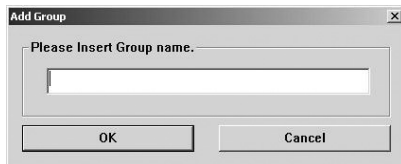


3 Group Connection

Group Connection enable users the convenience of connecting specific channels from different servers at once.



3-1 Group Setup



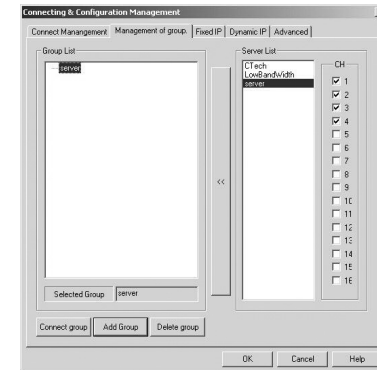
- Register Group Name

Goto [Management of group] and click [Add Group]. Insert the Group Name you wish to use and click [OK].

Group Name will be displayed on left side of Group List.
Select the Group Name from Group List.

3-2 Group Organization.

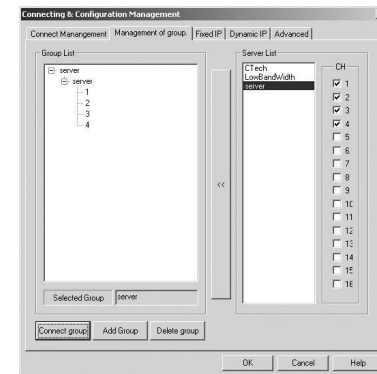
Click the Server you wish to include in Group from Server List.



Specific channels can be selected after you select Server Name from Server List.

Select the specific Server channel you wish to include in Group and click [Add Group].

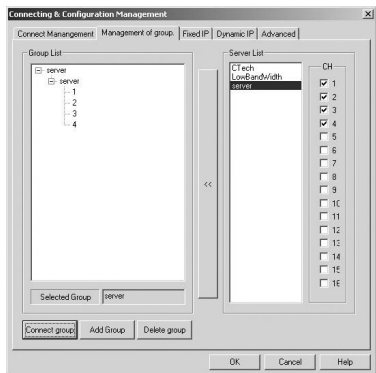
In one group, users are allowed to register up to 16CH from different Servers.



3-3 Group Connection

Click [Connect group] to connect.

(It will take about 10~30 sec to connect to all channels.)



4 Modem User Connection Setup

4-1 Modem Setup

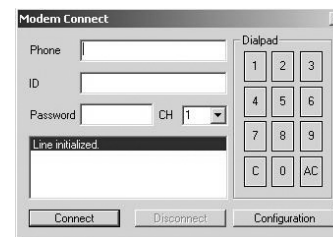
Select [Modem] icon from [Network Type Selection Panel] to connect from remote site using Modem.



Click [Connection] icon from [Control Panel] to run [Modem Connect] window.

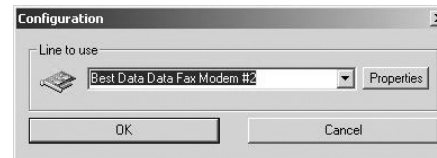


[Modem Connection] window is initialized. Insert Telephone No. (Insert the number assigned to DVR Server. Insert "w" and Telephone No. to add the waiting time while the line is being dialed. E.g.: 9w0232851525), ID & Password, (Insert the ID & Password which is registered in the Server program, [User Management].) Select the camera channel number and click [Connect]. You can only access one channel at one time using Modem. In order to change to different channel, click [Disconnect] from [Modem Connect] window, change channel and reconnect. Note: If You are not using 56K Internet Access, you do not need to access Internet Service Provider.



4-2 Configuration Setup

The modem model name will appear when you click [Configuration]. During initial setup, the Model Name needs to be confirmed to complete registration, thereafter, this step will be bypassed.



Click [Properties] to view General/Advanced default setup. Use default when use of modem.

5 Search

5-1 Remote Search

※ **Broadband:** To search recorded images from remote site, click [LAN] from [Network Type Selection Panel] when using Broadband Internet connection to connect to Server. Click [Search] Icon from [Control Panel] to run Search program.

※ **Modem:** To search recorded images from remote site, click [Modem] from [Network Type Selection Panel] when using Modem to connect to Server. Click [Search] Icon from [Control Panel] to run Search program.



- Control Panel: Consists of [Surveillance Mode] icon, [Local Search] icon, [Remote Search] icon, [Save Still Image] icon and [Print Still Image] icon.

Surveillance Mode Icon: Converts to Surveillance Mode.

Local Search Icon: Runs [Local Search] window.

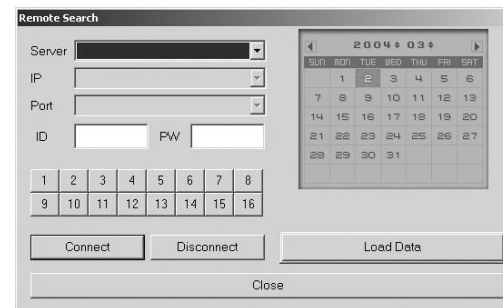
Remote Search Icon: Runs [Remote Search] window.

※ Remote Search

[Remote Search using Internet]

- Server Connection: Insert Server, Connection Port, ID & Password, Channel number and click [Connect].

- Data Load: Click the date from calendar and click [Load Data].



- Insert telephone no. of Server, ID & Password, channel number and click [Connect].

- Image Output Control Panel: Consists of [Play] & [Stop].

- Screen Partition Panel:

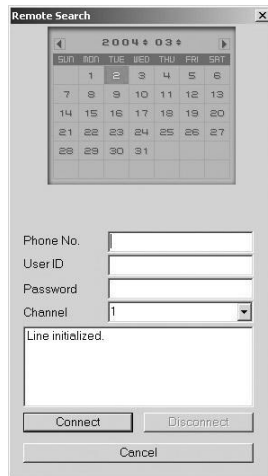
Maximum 4CH search & playback is available from remote site using Broadband.

1CH search & playback is available from remote site using Modem.

- Search Data Process Bar

※ **Hour Bar:** If there is recorded data in selected hour, recorded data is indicated in red from minute bar

※ **Minute Bar:** Minutes of recorded data is indicated from 0~59min. and recorded data is indicated in red.



5-2 Local Search

Click [Local Search] from Search Mode, Surface Mode Window will appear. Click [OK] to run Local Search program.

※ [Local Search] from NetClient Program is similar to the functions from Main Program (Server Program). Refer to the Server Program Manual (Chapter 2: Search Program) for information regarding other featured functions.

02. WebClient

WebClient can receive the images from remote site & view through the internet without installing any other program.



1. Connection

1-1 For Fixed IP Users(Static IP)



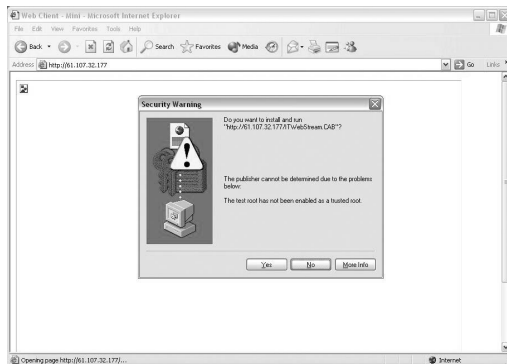
Insert the Server IP Address in Internet Web Browser.

e.g.: Insert as

http://61.107.32.182:26540 if the Server IP Address is 61.107.32.182.

Message as above will appear if this is your first time connecting through Internet Web Browser.
Click <yes> button and it will take a few seconds to load the WebClient program.

IP address & Port No. will be automatically retained in the WebClient program. You will be asked to enter ID & Password again for security. Click [Connect] to view image.



For Dynamic IP User

Insert the ID you have been given then click [Login] button.

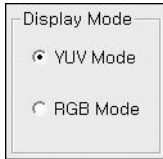


Message as above will appear if it is your first time connecting through Internet Web Browser.

Click <yes> button and it will take a few seconds to load the WebClient program.

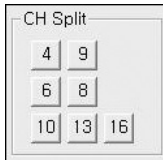
IP address & Port No. will be automatically retained in the WebClient program. You will be asked to enter ID & Password again for security. Click [Connect] to view image.

1-2 Display Mode



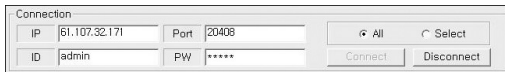
Display Mode: There are two modes available: YUV Mode & RGB Mode. RGB Mode uses more overload than YUV Mode. If you are not able to view the images using YUV Mode, update the Graphics Card Driver and if problem persists check whether the Graphics Card supports YUV Mode

1-3 Screen Partition



There are 7 variations of screen partitioning that is supported according to camera number.

1-4 Connection



Connect to All Channel (All Mode)

WebClient program is set to All Mode as default.

If you wish to view all channels from the Server, click [Connect] button while it is set to [All Mode].

Connect to specific channel (Select Mode)



If you wish to view specific channels from the Server (Not all channels), convert to [Select Mode] and click [Connect] button. Displayed above, channel selection panel will appear on the right side of WebClient program. Select the specific channel and click [Start] button.

I/O DEVICE

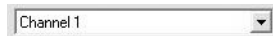
9.1 Input/Output Device

Input/Output Control is available from DVR Program [Configuration] [Event] and it consists of Sensor, (A)ction/Digital Output.

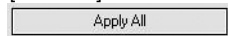


9.2. Channel Selection & Apply All

Select channel after preparation of Input/Output Board and other Surveillance equipment.

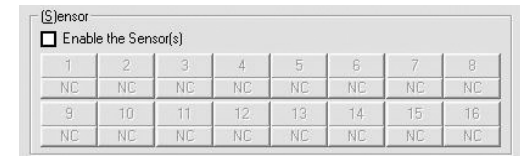


All the surveillance equipment is connected to every channel, and to control all channel, click [Apply All] after setup of [Sensor], [Action/Digital Output], [Digital Output], [Warning Sound], [Duration].



9.3 Sensor Input

[Sensor] is equivalent to Digital Input. When there is input signal from outside to selected channel(Sensor is activated, e.g.: When use of fire alarm, sensor is activated when occurrence of fire), selected channel will recognize as occurrence of event.

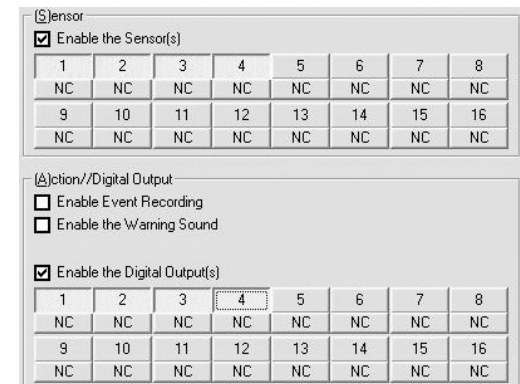


9.3.1 NC

[NC] stands for “Normal Close” If this button is selected, Normally(Event is not occurred) the circuit will be closed. General Sensors are “Normal Close” but in case of special sensor which is “Normal Close” type, do not select [NC].

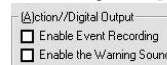
9.3.2 Sensor Port Control

Confirm the video channel of sensor you want to insert, then click [Enable the Sensor]. Setup the sensor port which is connected to SmartDVR I/O Board by each channel. Can use sensor port regardless of digital output number.



9.4 Action//Digital Output

Action//Digital Output - [Enable Event Recording] will automatically record the image when sensor is activated after an occurrence of event. [Enable the warning sound] will make a warning sound from the speaker.



9.5 Digital Output

Confirm the video channel of digital output you want to insert, then setup [Digital Output]. Setup the Digital Output Number by each channel. Can use digital output port regardless of sensor input number.

Enable the Digital Output(s)

1	2	3	4	5	6	7	8
NC	NC	NC	NC	NC	NC	NC	NC
9	10	11	12	13	14	15	16
NC	NC	NC	NC	NC	NC	NC	NC

9.6 Warning Sound

Select Wave file to change warning sound.

Warning Sound

Select a alarm wave file.

Find Default

9.7 Duration Time

Setup duration time of Warning Sound using mouse wheel.

Duration

Warning Time 5 Sec

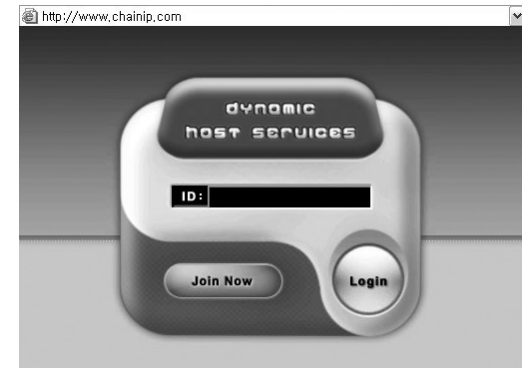
※ Dynamic IP User Manual

1-1 DHS(Dynamic Host Service)

DHS service helps support Dynamic IP remote access. Internet Service Provider frequently change IP address when using a standard broadband connection. DHS Hosting Service keeps track of Server ID and updates IP address periodically to support remote access without the need of a Static IP Address.

1-2 DHS Service Registration

- Connect to <http://chainip.com> from Internet Web Browser.



2 Click [Join Now] and enter information on registration form.

3 Our server manager will contact you within 24 hours after the registration is complete.

4 Connect to <http://chainip.com> and login with the ID that has been assigned to you.

※ IP Router User Manual

For Customers who use Routers inside their intranet environment for PC & DVR internet access.

1 The following steps will guide you to allocate Private IP address to DVR Server.

Goto [Start] – [Control Panel] – [My Network Places]

2 Click the right mouse button from [Local Area Connection] in LAN or High Speed Internet.

3 Click [Properties].

4 Double click [Internet Protocol (TCP/IP)].

5 Manually input private IP address, do not select [Automatically Obtain IP Address.] If you do not know your IP address:

Click [Start] – Click [Run] and enter cmd or command and press OK. A black DOS screen will appear, then type 'ipconfig' and press Enter. Your IP Address, Submask and GateWay will be displayed, use these IP addresses and enter into Step 5

- Insert '168.126.63.1' for DNS.

6 After the setup is complete, you must access your router to set Port Forwarding.

- Refer to Router manual since Port forwarding function is different for every Router.

<Following is an example of AnyGate IP Router.>

Port forwarding Port No. : 20408, 26540

Virtual Servers

Servers

Web
FTP(Control)
FTP(Data)
E-Mail(POP3)
E-Mail(SMTP)

Defaults
Disable All
Delete

Properties

Enable Web

PC (Server): Select a PC My PC is not listed

Protocol: TCP

Internal Port No. 20408 External Port No. 20408

Clear Form

Update Selected Server Add as new Server Help

FCC NOTICE

THIS DEVICE COMPLIES WITH PART 15 OF THE FCC RULES.
OPERATION IS SUBJECT TO THE FOLLOWING TWO CONDITIONS:
(1) THIS DEVICE MAY NOT CAUSE HARMFUL INTERFERENCE, AND
(2) THIS DEVICE MUST ACCEPT ANY INTERFERENCE RECEIVED,
INCLUDING INTERFERENCE THAT MAY CAUSE UNDESIRABLE
OPERATION.

This equipment has been tested and found to comply with the limits for a Class B digital device, pursuant to part 15 of the FCC Rules. These limits are designed to provide reasonable protection against harmful interference in a residential installation. This equipment generates, uses and can radiate radio frequency energy and, if not installed and used in accordance with the instructions, may cause harmful interference to radio communication. However, there is no guarantee that interference will not occur in a particular installation. If this equipment does cause harmful interference to radio or television reception, which can be determined by turning the equipment off and on, the user is encouraged to try to correct the interference by one or more of the following measures :

- Reorient or relocate the receiving antenna.
- Increase the separation between the equipment and receiver.
- Connect the equipment into an outlet on a circuit different from that to which the receiver is connected.
- Consult the dealer or an experienced radio/TV technician for help.

NOTE : The manufacturer is not responsible for any radio or TV interference caused by unauthorized modifications to this equipment. Such modifications could void the user's authority to operate the equipment.