



Contents

I Installation Manual

1. Hardware Installation
2. Software Installation

II User Manual

3. User Manual- Server
 01. Main Program
 02. Search Program
 03. AVI Backup Manager
 04. Backup Manager
4. User Manual- Client
 01. NetClient Program
 02. WebClient Program

※ Annex

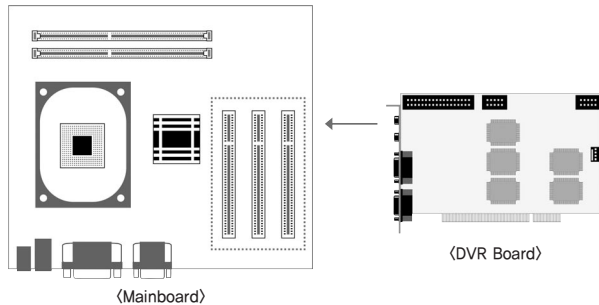
- Annex 1. I/O Device
- Annex 2. Dynamic IP
- Annex 3. IP Router

1. Hardware Installation

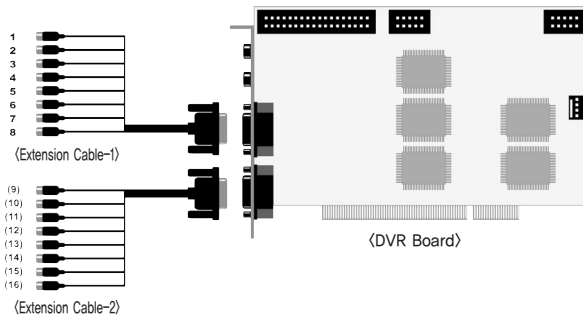
Please check contents before installation: DVR Board, Extension Cable, Audio & PTZ Installation, etc., if you are missing any parts please contact your local dealer.

1. DVR Board & Extension Cable Installation

1-1. Insert the DVR Board to an empty PCI Slot in DVR PC.



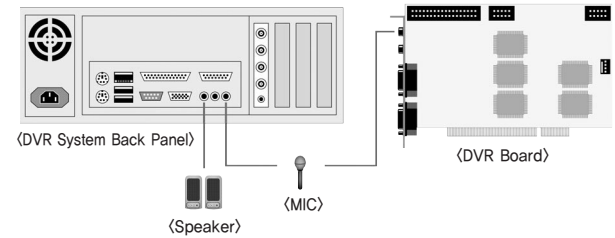
1-2. Use Extension Cable to connect cameras.



2. DVR Audio Installation

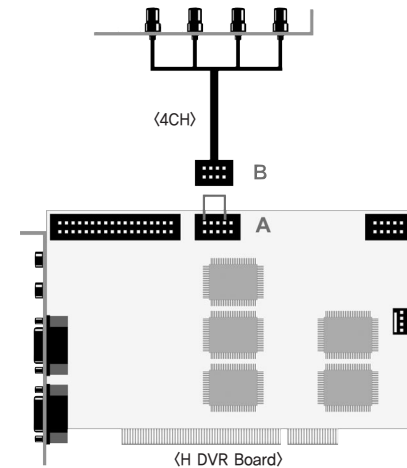
2-1. Prepare DVR PC and MIC.

2-2. Connect the MIC to the Mainboard MIC Port of DVR PC OR the Audio IN port on DVR Board. Please connect the Speaker to the back panel of DVR PC.

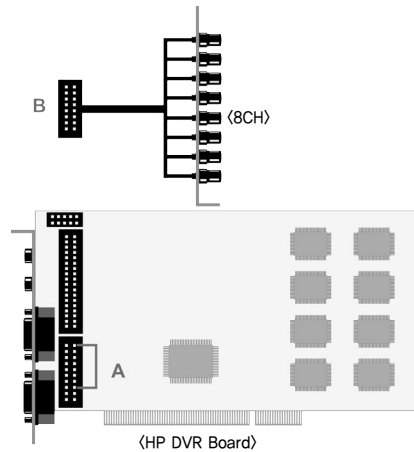


※ Either connect the MIC to Audio IN port of DVR Board OR Mainboard MIC port.

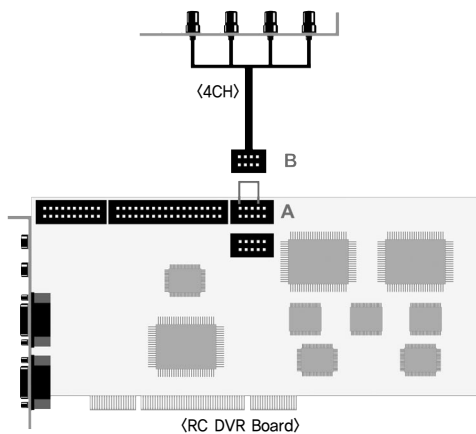
- H Board: Connect the 4CH MIC(B) to DVR Board(A) starting from the left.



- HP Board: Connect the 8CH MIC(B) to DVR Board(A) starting from the top.



- RC Board: Connect the 4CH MIC(B) to DVR Board(A) starting from the left.



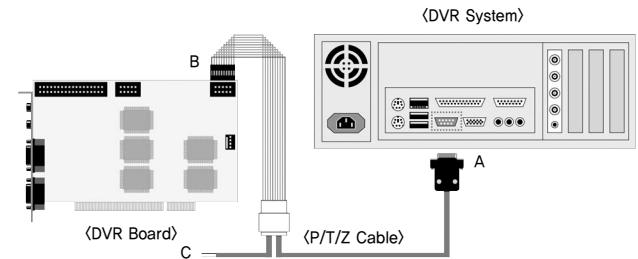
3. P/T/Z Installation

3-1. P/T/Z Cable

[A] Cable : Connect to COM port of DVR PC

[B] Cable : Connect to DVR Board

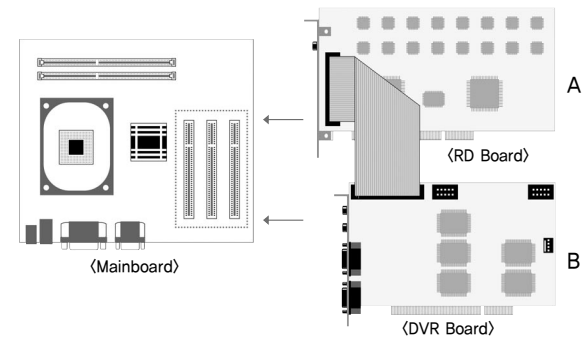
[C] Cable : Connect to Receiver Cable



4. Real Display(RD) Board Installation

4-1. Insert the Real Display Board into an empty PCI Slot in DVR PC.

4-2. Use Cable to connect Real Display Board with DVR Board.

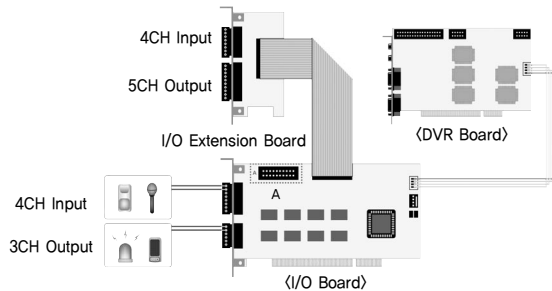


※ Real Display Board cannot be used alone, it must be used with S, H, HPLUS DVR Boards.

5. I/O Board Installation

5-1. Prepare Sensor, Alarm, I/O Board and I/O Extension Board for I/O Board Installation.

< 8 port In/Out Connection >



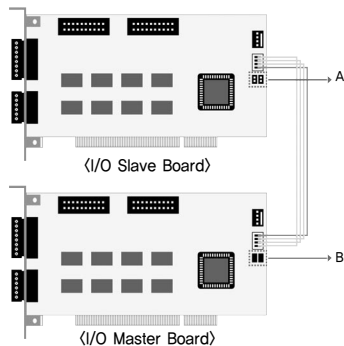
※ A : Industrial Case System can use In/Out port separately when additional Back Panel is available.

< 16 port In/Out Connection >

To use 16 port In/Out,

A : Slave Board must remove jumper.

B : Master Board must install jumper.

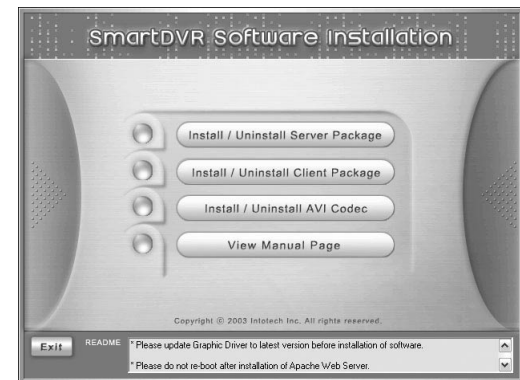


1. Software Installation

You can install SmartDVR Software by using SmartDVR Formula CD or downloading from INTOTECH website, www.intotech.co.kr. Software CD consists of Server Package (Main program, WebClient program, Apache HTTP Server program), Client Package (NetClient program) & AVI Codec. User Manual is also available from SW CD.

[Main Program Installation]

Insert SmartDVR Formula CD into CD-ROM drive or run DvrSetup.exe file; the following installation screen will appear .



Click the icon below and Main Program installation will automatically proceed.

Installation Step : Apache HTTP Server (Web Server) -> WebClient -> SmartDVR Formula



1. SmartDVR Apache HTTP Server (Web Server) Installation

1-1 Installation wizard tool will appear. Click [Next].



1-2 Read the License Agreement and if you agree to the contents, select [I accept...] and click [Next].



1-3 Click [Next] after checking server information of Apache HTTP Server.



1-4 Insert Network Domain, Server Name, Administrator's E-mail Address.

(This procedure is only a formality. In general cases, follow example) Select [Run as a service for All Users – Recommended] and click [Next].



1-5 Select Setup Type as [Complete] and click [Next].



1-6 Click [Next] without change of setting. Note: Do not change the directory!



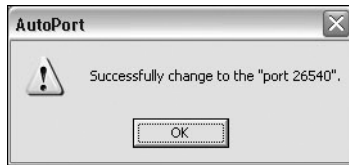
1-7 After the setting is finished, click [Install] and start installation.



1-8 After the installation is done, click [Finish].



1-9 After the installation is finished, a message confirming the change of the Server port of Apache will appear.

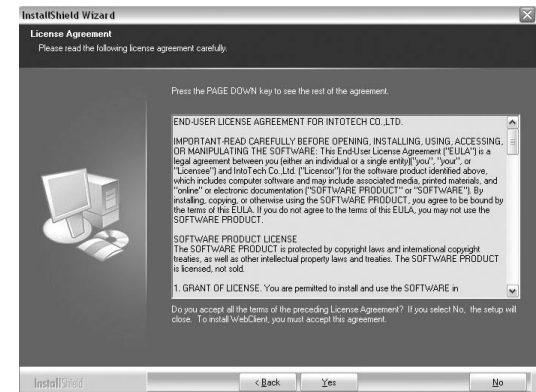


2 SmartDVR WebClient Installation

2-1 After the Installation Wizard Tool is appeared, click [Next].



2-2 Check the contents of License Agreement; if you agree to the contents, click [Yes].



2-3 After the installation is done, click [Finish].

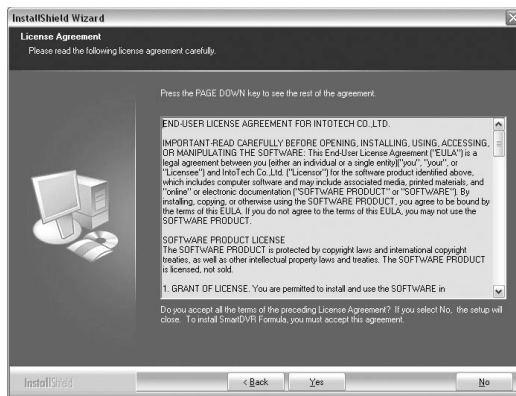


3 SmartDVR Formula Installation

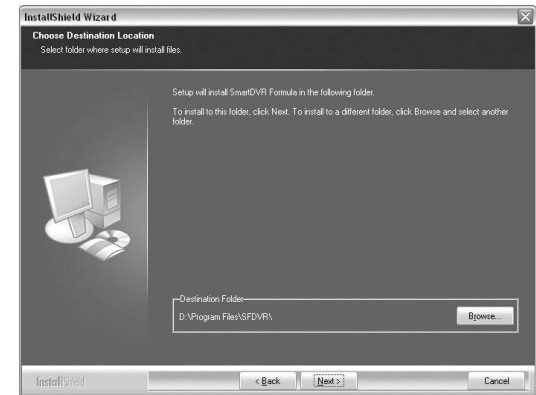
3-1 After Installation Wizard Tool is appeared, Click [Next].



3-2 Check the details of License Agreement; if you agree to the contents, click [Yes].



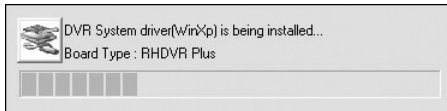
3-3 After choosing [Destination Folder] for installation, click [Next].



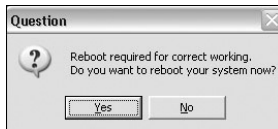
3-4 After the installation is done, click [Finish].



3-5 Driver Installation: Wizard automatically installs drivers according to each board type.



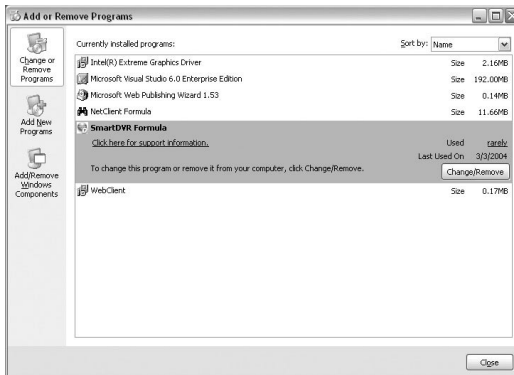
3-6 Reboot PC after all the installation.



4. SmartDVR Formula Uninstallation

4-1 Goto [Start] – [Control panel] and click [Add/Remove Program].

4-2 Select [SmartDVR Formula] and click [Change/Remove].



Click the icon below and NetClient Program installation will proceed.



5 NetClient Installation

5-1 After the Installation Wizard Tool is appeared, click [Next].



5-2 After choosing [Destination Folder] for installation, click [Next].

