



# Polaroid

## User Manual

SB-502



PLEASE READ THIS USER MANUAL COMPLETELY BEFORE  
OPERATING THIS UNIT AND RETAIN THIS BOOKLET FOR  
FUTURE REFERENCE.

## **IMPORTANT SAFETY INSTRUCTIONS**

1. Read these instructions carefully.
2. Keep these instructions in a safe place and follow all instructions.
3. Do not use this product near water. This product shall not be exposed to dripping, splashing of water or places with extreme humidity.
4. Cleaning: Do not use liquid cleaners or aerosol cleaners. Clean only with a dry cloth.
5. Do not place near any heat sources such as radiators, heat registers, stoves, or other apparatuses (including amplifiers) that produce heat.
6. Only use attachments/accessories specified by the manufacturer.
7. Refer all servicing to qualified service personnel.
8. Prevent this device from falling or impact during use.
9. Do not place other objects on the LCD screen.

## **FCC Statement**

This equipment has been tested and found to comply with the limits for a Class B digital device, pursuant to part 15 of the FCC rules. These limits are designed to provide reasonable protection against harmful interference in a residential installation. This equipment generates, uses and can radiate radio frequency energy and, if not installed and used in accordance with the instructions, may cause harmful interference to radio communications. However, there is no guarantee that interference will not occur in a particular installation. If this equipment does cause harmful interference to radio or television reception, which can be determined by turning the equipment off and on, the user is encouraged to try to correct the interference by one or more of the following measures:

- Reorient or relocate the receiving antenna.
- Increase the separation between the equipment and receiver.
- Connect the equipment into an outlet on a circuit different from that to which the receiver is connected.
- Consult the dealer or an experienced radio/TV technician for help.

To assure continued compliance, any changes or modifications not expressly approved by the party.

Responsible for compliance could void the user's authority to operate this equipment. (Example- use only shielded interface cables when connecting to computer or peripheral devices).

This equipment complies with Part 15 of the FCC Rules. Operation is subject to the following two conditions:

- (1) This device may not cause harmful interference, and
- (2) This device must accept any interference received, including interference that may cause undesired operation.

RF warning statement:

The device has been evaluated to meet general RF exposure requirements

## IC Warning

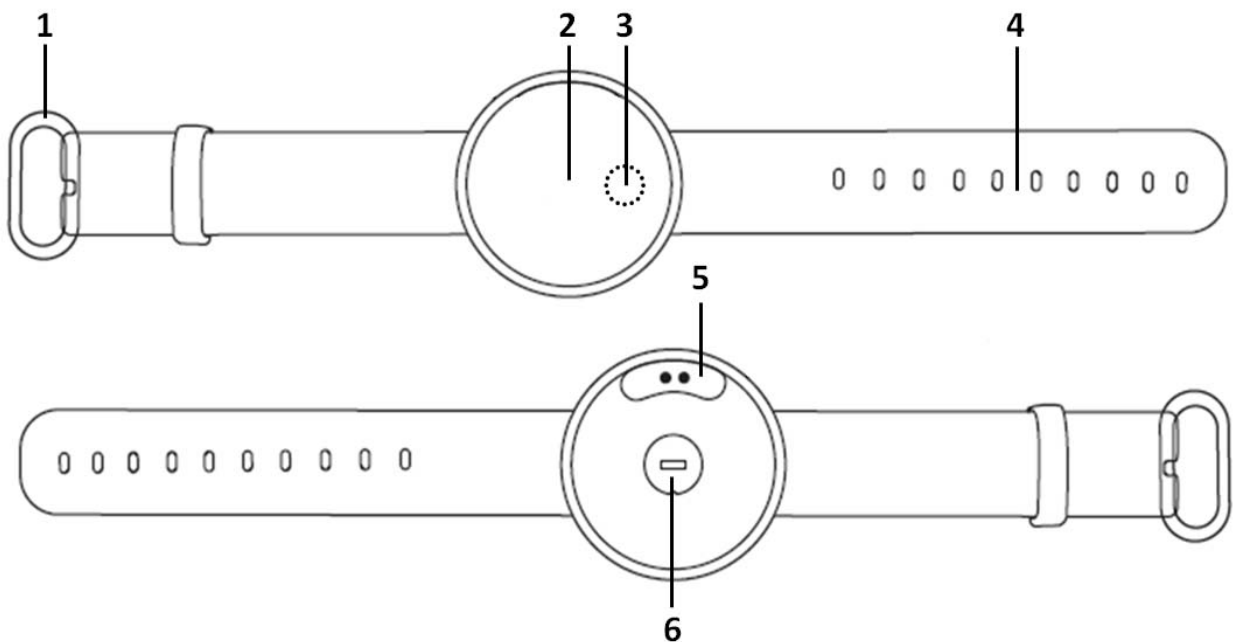
This device complies with Industry Canada license-exempt RSS standard(s). Operation is subject to the following two conditions: (1) this device may not cause interference, and (2) this device must accept any interference, including interference that may cause undesired operation of the device.

Under Industry Canada regulations, this radio transmitter may only operate using an antenna of a type and maximum (or lesser) gain approved for the transmitter by Industry Canada. To reduce potential radio interference to other users, the antenna type and its gain should be so chosen that the equivalent isotropically radiated power (e.i.r.p.) is not more than that necessary for successful communication.

This device complies with Canadian ICES-003 and RSS-210

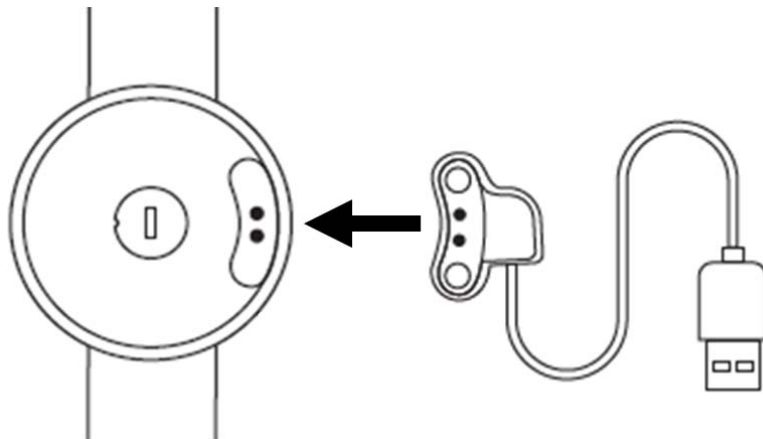
**Thank you for your purchase.**

### SMARTWATCH OVERVIEW



1. Buckle	4. Adjustment Holes
2. Display	5. Charging Dock
3. Touch Sensor	6. Heart rate Sensor

## CHARGING YOUR SMARTWATCH



This Polaroid smartwatch is equipped with a built-in rechargeable battery. Please completely charge the battery before first use. This will take approximately 2-3 hours.

Using the charging cable provided, plug one end (USB tip) into a USB port on your computer or USB wall charger (not included). Connect the other end to the Charging Dock on the back side of the smartwatch. Ensure the charging points are connected and aligned for complete contact. The contacts will magnetically connect together.

## Product and Battery Disposal

This product contains a built-in lithium battery and should not be disposed of in normal household waste. The battery in this device is not intended to be removed by the individual or end user. For disposal and recycling, please contact your local waste management authorities. The recycling and processing of electronic waste will make a significant contribution towards helping protect the environment.

### POWER ON/OFF

To turn ON the smartwatch for the first time, press and hold the Touch Sensor location as shown in the above Smartwatch Overview diagram for approximately 3-4 seconds.

To turn OFF the smartwatch, press and hold the Touch Sensor for approximately 3-4 seconds. The ON/OFF screen will be displayed as shown below.



Tap the Touch Sensor to choose and highlight OFF, then press and hold the Touch Sensor for approximately 3-4 seconds.

**NOTE:** When the battery is fully drained, the smartwatch will automatically turn OFF. Please ensure to monitor your battery level by viewing the icon on the display. To maintain your battery life, use your smartwatch at least once a week, fully charge the battery regularly and do not leave the battery fully drained for extended periods of time.

## DOWNLOADING THE APP

Scan the below QR code or search for “ **HappySport** “ from the Google Play Store or Apple App Store. Install the app onto your smartphone. You will require this app to set up your smartwatch, sync your activity data to your smartphone and change settings on the smartwatch.

### Smartphone System Requirements:

- Android 4.4 or above
- iOS 8.0 or above

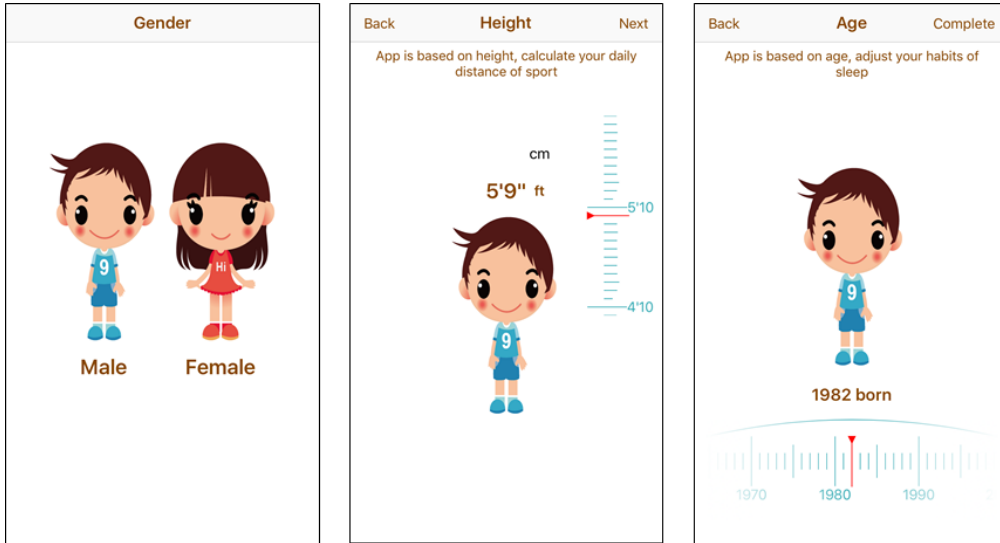


## PAIRING YOUR SMARTWATCH TO YOUR SMARTPHONE

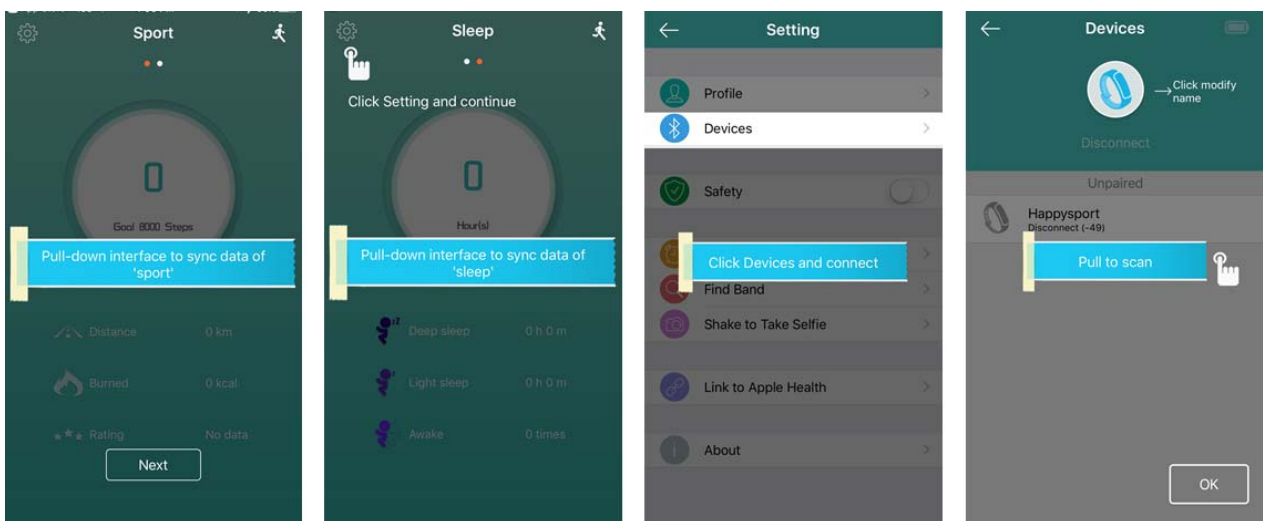
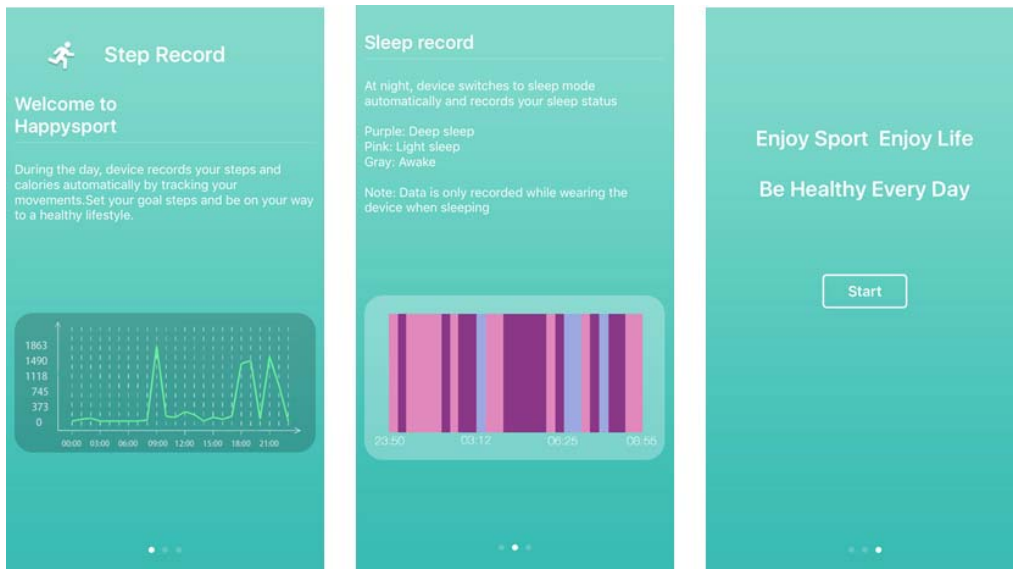
Pairing a Bluetooth Enabled Smartphone for the First Time

NOTE: Refer to the user manual for your Bluetooth enabled smartphone for instructions on pairing and connecting Bluetooth devices. Make sure the smartwatch is turned ON and keep it close to your Bluetooth enabled smartphone at all times during the pairing process.

1. Once the app is installed, open it and follow the instructions to register yourself, by choosing your gender, entering your weight, height and the year in which you were born.

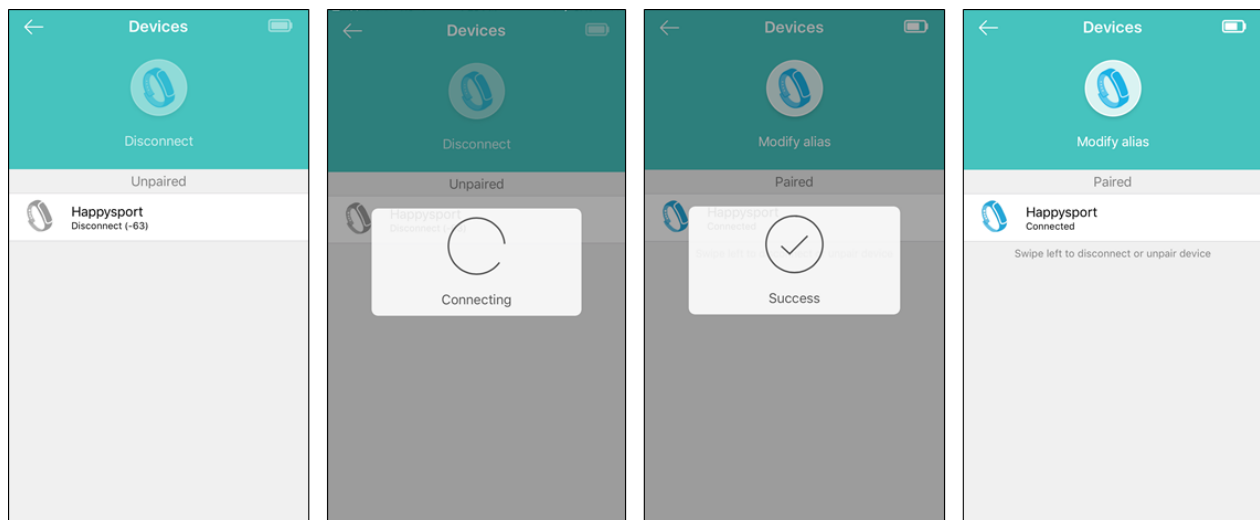


## 2. Follow the introductory prompts to get started.





3. On the Devices screen, connect with your Polaroid (HappySport) smartwatch.



4. Once you are successfully connected, you can:

- Edit your profile and settings
- Turn on your call and various message alerts
- Set sedentary reminders
- Set your alarm
- Access heart rate settings and much more!



**NOTE: When you are successfully connected the time and date on the smartwatch will automatically sync with your smartphone.**

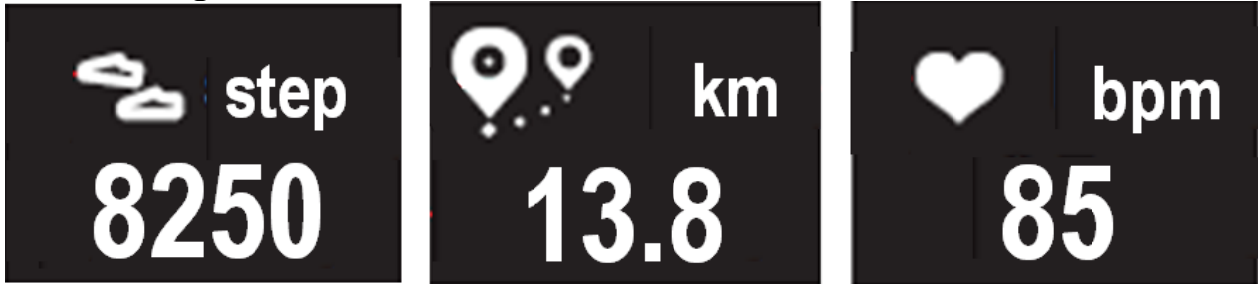
5. From the main screen, you can access your total steps, calories burned, how well you slept and your heartrate information.



NOTE: If connecting and pairing was unsuccessful, restart your smartwatch and smartphone, make sure your Bluetooth setting is activated on your smartphone and repeat the steps above.

## SMARTWATCH FUNCTIONS

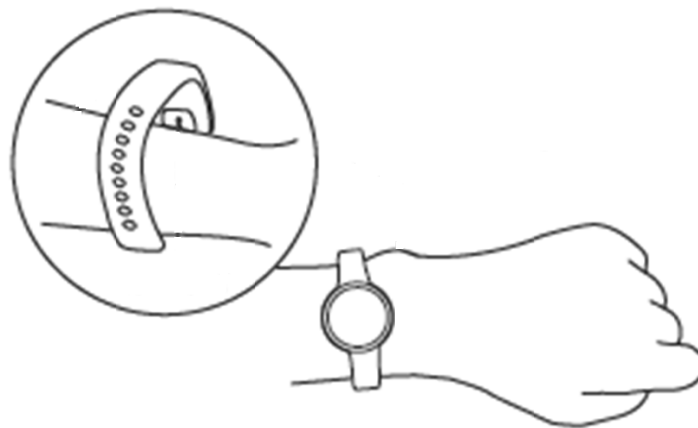
You can access Steps, Distance and Heartrate information directly from the smartwatch. Simply tap the Touch Sensor to cycle through the various screens.



NOTE: For best results, please ensure to wear the smartwatch flat on your wrist, a finger's width below your wrist bone. Ensure the Heartrate Sensor is in contact with your wrist at all times.

To track your sleep, please ensure to wear the smartwatch to bed.

**This smartwatch is water resistant, not waterproof. Please ensure to take it off before showering or swimming.**



**Need help? Please call us.**

**If you encounter any difficulties with this product, please call or email us and our representatives will be ready to help you.**

**Toll free: 1-844-550-1250 (Monday to Friday: 9am – 5pm EST)**

**Email: [PS.Watch.help@gmail.com](mailto:PS.Watch.help@gmail.com)**

**Thank you for your purchase. We want you to start enjoying your product.**

Polaroid, Polaroid & Pixel, Polaroid Color Spectrum, and Polaroid Classic Border Logo are trademarks of PLR IP Holdings, LLC, used under license. PLR IP Holdings, LLC does not manufacture this product or provide any Manufacturer's Warranty or support.

[www.Polaroid.com](http://www.Polaroid.com)

© 2017 All Rights Reserved.

Country of origin: China

Distributed by INTP, Inc. as Importer

2323 North State Street, Suite 101, Bunnell, FL 32110