

Chapter 1. Attention .....	3
Screen Protection .....	3
Extended Card .....	3
Non-waterproof .....	3
Magnetism .....	4
Chapter 2. Introduction .....	5
The Product .....	5
Layout .....	5
Power Source .....	7
USB Disk .....	10
Function Introduction .....	11
Main Menu .....	11
Dictionary Summary .....	15
English Dictionary .....	16
Chinese Dictionary .....	21
Japanese Dictionary .....	24
Korean Dictionary .....	25
Translator & Study .....	26
Multimedia .....	28

Utility.....	31
Chapter 3. Maintenance .....	39
Chapter 4. FCC Notice .....	40

## Chapter 1. Attention

### Screen Protection

- To avoid scratching the screen, use the stylus that comes with this product only.
- When cleaning, rub the screen lightly with a dry, clean and soft cloth (do not use volatile liquid).
- Due to the liquid crystal screen is made by glass, please avoid falling, pressing such man-made damages.

### Extended Card

Insert the Secure Digital Card/Multi Media Card into the card slot. Do not remove the battery or insert/remove card during data saving to avoid malfunction of the product.

### Non-waterproof

The product is non-waterproof. Please keep it away from any liquid. In case it gets wet, please dry the surface and send the product to our service center for check.

## **Magnetism**

The product is magnetic. Please do not place it with other magnetic products to avoid losing some functions.

### **Note:**

***We are obliged to charge user maintenance fee if the product is damaged due to liquid percolation, improper placement of the product (such as erode by moths), or breakage on the screen (such as screen scratching or breaking) such man-made damages.***

## Chapter 2. Introduction

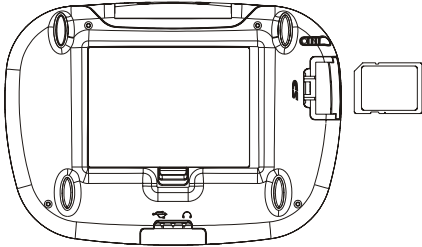
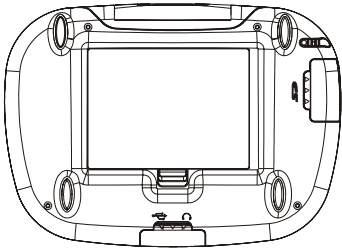
### The Product

#### Layout

#### Observe Side



Reverse Side



## **Power Source**

One of the following power sources can be used:

1. Rechargeable lithium battery (3.7V/1900mAh)
2. A power adaptor with DC output 5V/1A
  - This power source can be combined with the rechargeable lithium battery.
3. Connect with PC via USB cable

## **Battery Replacing**

Insert

1. Press [ON/OFF] to turn off the power.
2. Remove the battery cover.
3. Insert the battery into the compartment as below.
4. Close the battery cover securely.

Remove

Repeat the steps above. When operating the 3<sup>rd</sup> step, please remove the battery as instruction.



**Note:**

- 1. When power is insufficient, please turn off the product first, and then insert a power adaptor to recharge the battery.**
- 2. Personal data will be retained even the product is out of power. Please turn off the product first, and then take out the battery 3 seconds later. Otherwise, data may be displayed unusually.**
- 3. If the message of low battery appears shortly after the battery is fully charged, this means the battery is no longer usable. Please change a new one.**





### **Battery Recharging**

1. Be sure to use Besta DC 5V/1A battery adaptor.
2. Plug the charging adaptor into the DC socket in the product and plug the power adaptor into a wall outlet. It takes about 3 hours to recharge fully.

#### **Note:**

1. ***Damage incurred by using other power adaptor that does not come with this product is not covered by our warranty.***
2. ***Damage incurred by using other battery that does not come with this product is not covered by our warranty. Please do not use this battery on other products.***

### **Battery Power Checking**

 /  displays in the top right-hand corner of the main menu. Double click to view the power properties.

### **USB Disk**

Through USB cable, you can move, copy, or delete data and add new file folder both to our product and PC.



**Note:**

***Do not remove the link cable during operation. Otherwise, the data may be lost and the product may be abnormal.***







Multimedia (Page 1)



Multimedia (Page 2)




Utility (Page 1)




Utility (Page 2)



### Dictionary Summary

- Provides Multi-Dictionaries.
- Tap **KO** / **EN** / **JP** / **CH** to switch the input method.
- Provides preview window on the index screen.
- Provides input panel and handwriting.
- Provides smart input.
- Provides three kinds of font sizes on the explanation screen.
- Tap  or press [ESC] to return to the previous screen.

- Tap  to close the current window.
- Can cross search words up to 30 layers.
- Can record up to 200 words that have been looked up recently.

## **English Dictionary**

### **E-K Dictionary**

- Provides Minjung's English-Korean Dictionary.
- Provides wildcard search.
- Provides pronunciation and read after the product.
- Provides quick view on the explanation screen.
- Provides copyright information.

### **K-E Dictionary**

- Provides Minjung's Korean-English Dictionary.
- Provides quick view on the explanation screen.
- Provides copyright information.



**Collins E-E Dictionary**

- Provides Collins Advanced English Dictionary.
- Provides appendices.
- Provides wildcard search.
- Provides pronunciation and read after the product.
- Provides quick view on the explanation screen.
- Provides copyright information.

**Thesaurus**

- Provides Collins A-Z Thesaurus.
- Provides appendices.
- Provides wildcard search.
- Provides pronunciation and read after the product.
- Provides copyright information.

**Collins Usage**

- Provides Collins Cobuild English Usage.
- Provides appendices.
- Provides pronunciation and read after the product.

- Provides copyright information.

#### **Collins Idiom**

- Provides Collins Cobuild Idioms Dictionary.
- Provides appendices.
- Provides pronunciation and read after the product.
- Provides copyright information.

#### **Collins EEK**

- Provides Collins EEK Dictionary.
- Provides wildcard search.
- Provides pronunciation and read after the product.
- Provides copyright information.

#### **EKE Dictionary**

- Provides English-Korean-English Dictionary.
- Provides wildcard search.
- Provides pronunciation and read after the product.
- Provides quick view on the explanation screen.

- Provides copyright information.

#### **English Idiom**

- Provides English Idioms Dictionary.
- Provides pronunciation and read after the product.
- Provides acronym and keyword for easier search.
- Provides copyright information.

#### **Vocabulary**

- Provides MD Vocabulary.
- Provides wildcard search.
- Provides pronunciation and read after the product.
- Provides copyright information.

#### **Post KE Idiom**

- Provides Korean Idioms Dictionary.
- Provides quick view on the explanation screen.
- Provides copyright information.

**Word Combi**

- Provides BBI Word Combi Dictionary.
- Provides English and Korean indexes.
- Provides wildcard search on the English index screen.
- Provides pronunciation and read after the product.
- Provides quick view on the explanation screen.
- Provides copyright information.

**Animation Dictionary**

- Provides Animated Dictionary.
- Provides dozens of classifications.
- Provides wildcard search.
- Provides pronunciation and read after the product.
- Provides quick view on the explanation screen.
- Allows enable/disable background sound.

**Illustrated Dictionary**

- Provides various illustrations to learn English.
- Provides comparison between English and Korean for the current scene.

- Provides picture marked by number or letter and no marked picture for selection.
- Provides English pronunciation.

### **Chinese Dictionary**

#### **C-K Dictionary**

- Provides Chinese Korean Dictionary.
- Provides classified Chinese indexes and copyright, label explanation.
- The index screen can be ordered by Pinyin and Unicode.
- Provides pronunciation and read after the product.

#### **K-C Dictionary**

- Provides Korean-Chinese Dictionary.
- Provides copyright information.

#### **Chinese Dictionary**

- Provides the Contemporary Chinese Dictionary.
- The index screen can be switched between Chinese and foreign language.
- Provides pronunciation and read after the product for the words in the Chinese list.

- Provides copyright information.

#### **Chinese Expression**

- Provides Chinese Expression Dictionary.
- Provides the classified Chinese expressions.
- Provides the Chinese and Korean indexes.
- Provides copyright information.

#### **Chinese Idiom Dictionary**

- Provides Chinese Idioms Dictionary.
- Provides the classified Chinese idioms.
- The index screen can be ordered by Pinyin and Unicode.
- Provides pronunciation and read after the product.
- Provides copyright information.

#### **Chinese Synonym**

- Provides Chinese Synonym Dictionary.
- Provides pronunciation and read after the product.
- Provides quick view on the explanation screen.

- Provides exercise on the explanation screen.
- Provides copyright information.

#### **HSK Words**

- Provides HSK Words.
- Provides classified indexes.
- Provides pronunciation and read after the product.
- Provides quick view on the explanation screen.
- Provides copyright information.

#### **E-C Dictionary**

- Provides English-Chinese Dictionary.
- Provides wildcard search.
- Provides KK and DJ phonetic symbols.
- Provides examples and grammar.

## **Japanese Dictionary**

### **J-K Dictionary**

- Provides Japanese-Korean Dictionary.
- Provides ellipsis explanations.
- Provides browsing.
- Provides total strokes.
- Provides quick view on the explanation screen.
- Provides copyright information.

### **K-J Dictionary**

- Provides Korean-Japanese Dictionary.
- Provides note and copyright information.

### **Japanese Kanji**

- Provides Japanese Kanji.
- Can browse cultural terms, basic kanji, confusing words, and copyright information.



**J-Conversation**

- Provides Japanese conversation and the corresponding Korean translation.
- Provides appendices.
- Provides executive organ class.
- Can search keyword in the conversations.

**J-Word Master**

- Provides Word Master.
- Provides foreword and copyright information.

**J-Current Word**

- Provides Japanese Current Word.
- Provides copyright information.

**Korean Dictionary****K-K Dictionary**

- Provides Korean-Korean Dictionary.
- Provides quick view on the explanation screen.

- Provides ellipsis and copyright information.

#### **Chinese Character**

- Provides New Ace Chinese-Character Dictionary.
- Provides the demo of Chinese strokes for the single keywords.
- Provides copyright information.

#### **Translator & Study**

##### **K-E Translator**

- Provides translation from Korean to English.

##### **Multi-Dictionary**

- Can search English/Chinese/Japanese/Korean words.

##### **Ani-Grammar**

- Provides Animated Grammar.
- Provides phrase recap after the animated cartoons.

**Animated Phrase**

- Provides Animated Phrases.
- Provides phrase recap after the animated cartoons.

**Scene Dialog**

- Provides Situational Dialogues.
- Provides the classified scenes.
- Provides dialogue pronunciation.
- Can search English/Korean words.
- Provides copyright information.

**Travel Dialog**

- Provides Travel Dialogues.
- Provides the classified dialogues.
- Provides dialogue pronunciation.
- Can search words.

**Calculator**

- Provides Calculator and Engineering Calculator.

**Multi-Lines**

- Provides Multi-Lines Calculator.

**Loan Calculator**

- Provides Loan Calculator.

**Multimedia****Media Player**

- Provides Media Player.

**Video Player**

- Provides Video Player.
- Can cross search words in the corresponding dictionaries.

**MP3 Player**

- Provides MP3 Player, which supports simultaneous conveyance of music and lyrics.
- Provides A-B record node playing function of MP3 (MPEG 1/2/2.5 layer III) file.

**FM Radio**

- Provides automatic search for FM channels.
- Provides channel setting.
- Can record phonic files.

**Recorder**

- Can record and play phonic files.

**EBook Player**

- Provides EBook Player.

**Game World**

- There are plenty of games on our website for you to download.

**Image Viewer**

- Provides Image Viewer.
- Provides view setting.

**WordPad**

- Provides WordPad.

**Paint Brush**

- Provides drawing tools to create graphics.
- Can modify record and create a new one.

**Flash Player**

- Provides Flash Player.

**My Z1**

- Provides file management.

**My Card**

- Provides a SD/MMC (Secure Digital/Multi Media Card) slot to extend the functions and data of the product.

## **Utility**

### **Task**

- Provides Task Manager.

### **Control Panel**

- Provides Control Panel.

### **Volume**

- Allows adjusting volume and sounds.

### **Sound Setting**

- Provides Sound Setting.

### **WIFI**

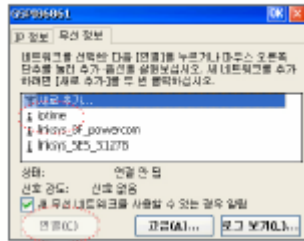


- Setting to enable/disable WIFI.
  - Click on the WIFI icon and you will see this popup window:

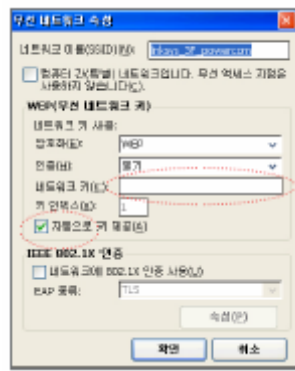




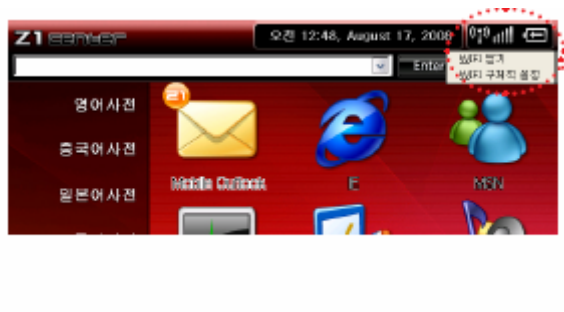
- A list of available access points will be listed as below:




- The next step is to set your connection details, default settings are selected, if there is a password please input them at this stage.



- The status of the connection can be seen on the main screen:



- If you click on the  icon, detailed information about the WIFI connection will be displayed.



- Once connected the LED light on the left will be lit.



- The following functions can be used after the device has been successfully connected to the Internet via WIFI:

**Mobile Outlook**

- Check your email on the go.
- Provides Mobile Outlook.
- Supports several accounts and allows editing the accounts.

**IE**

- Browse the Internet.

**MSN**

- Chat on MSN with our Windows Messenger.

**USB Setting**

- Provides USB Function Setting and USB Disk Setting.
- With charging function.

**My Setting**

- Provides My Dictionary Setting.
- Provides preview function.

**Alarm Setting**

- Can enable/disable alarm.
- Select music to set as the alarm music.
- Allows setting no alarm day.
- Allows setting alarm interval and repeat time(s).

**Font Setting**

- Provides Font Setting.
- Provides font size preview.

**Service Center**

- Provides information of Tel, fax, website, Email, etc.
- Provides copyright information.

**Chapter 3. Maintenance**

1. Keep the product dry. Precipitation, humidity and liquid that contain minerals will corrode electronic circuits.
2. Do not use or store the product in dusty, dirty areas as its detachable parts may be damaged.
3. Do not store it in hot areas. High temperatures can shorten the life of electronic products, damage batteries, and melt certain plastics.
4. Do not store it in cold areas. When the product warms up, moisture can form inside it, which may damage the electronic circuit boards.

5. Do not attempt to take the product apart. Improper handling may damage the product.
6. Do not drop, knock or shake the product. Improper handling may cause damage to the internal circuit boards.
7. Do not use harsh chemicals, cleaning solvents, or strong detergents to clean the product.
8. Do not paint the product. Paint can clog the product's detachable parts and cause it to malfunction.
9. Do not operate the product below the temperature 0 or above 40 degrees. Excessive heat or cold will cause the product to malfunction and incur damage. To avoid such from happening, please do not use the product for two hours after it has been exposed to excessive heat or cold, because the humidity or moisture formed by the temperature change will cause damage to the product.

#### **Chapter 4. FCC Notice**

This product has been tested and found to comply with the limits for a Class B digital device, pursuant to Part 15 of the FCC Rules. These limits are designed to provide reasonable protection against harmful interference in a residential installation. This equipment generates, uses and can radiate radio frequency energy and, if not installed and used in accordance with the instructions, may cause harmful interference to radio communications. However, there is no guarantee that interference will not occur in a particular installation. If this equipment does cause harmful interference to radio or television reception,



which can be determined by turning the equipment off and on, the user is encouraged to try to correct the interference by one or more of the following measures:

- Reorient or relocate the receiving antenna.
- Increase the separation between the equipment and receiver.
- Connect the equipment into an outlet on a circuit different from that to which the receiver is connected.
- Consult the dealer or an experienced radio/TV technician for help.

**CAUTION:**

**To assure continued FCC compliance:**

Any changes or modifications not expressly approved by the grantee of this device could void the

user's authority to operate the equipment.

**FCC RF Radiation Exposure Statement:**

This equipment complies with FCC radiation exposure limits set forth for an uncontrolled environment. End users must follow the specific operating instructions for satisfying RF exposure compliance. This transmitter must not be co-located or operating in conjunction with any other antenna or transmitter.

**FCC Label Compliance Statement:**

This device complies with Part 15 of the FCC Rules. Operation is subject to the following two conditions: (1) this device may not cause harmful interference, and (2) this device must accept any interference received, including interference that may cause undesired operation.