

+ IQAirAURA®

Atem®

Personal Air Purifier

User Guide

Benutzerhandbuch

Mode d'emploi

Guía del usuario

用戶指南

用戶指南

説明書

사용자 설명서

Гид пользователя

مستخدم ال لیلد

Manufacturer:

IQAir Germany GmbH

Contact: Carl-Maybach-Straße
18, 88239 Wangen im Allgäu,
Germany

Distribution:

IQAir North America

IQAir North America, Inc.
14351 Firestone Blvd.
La Mirada, CA 90638
USA

IQAir International

Incen AG
Hauptstrasse 104
9422 Staad
Switzerland

IQAir China

DRC Liangmaqiao Diplomatic
Office Building, Suite 1305B
No.19 Dongfang Dong Road
Chaoyang District,
100600 Beijing
Tel.: 400 108 5117

www.iqair.com/atem



Product

Components

- 1 Atem® Air Purifier
- 2 PureJet™ Diffuser
- 3 Back Plate
- 4 Stand Head
- 5 Stand Base
- 6 HyperHEPA® Filter
- 7 Silencer
- 8 Power Adapter & Plugs
- 9 Connector Cover

Produkt

Komponenten

- 1 Luftreiniger
- 2 PureJet Diffuser
- 3 Rückenplatte
- 4 Standkopf
- 5 Standfuß
- 6 Primärfilter
- 7 Schalldämpfer
- 8 Wechselstrom Adapter & Stecker
- 9 DC-Steckverbinder Abdeckung

Produit

Composants

- 1 purificateur d'air
- 2 Diffuseur PureJet
- 3 Plaque de Dos
- 4 tête de stand
- 5 Base de support
- 6 Filtre Primaire
- 7 Silencieux
- 8 Alimentation AC Adaptateur et fiches
- 9 Connecteur DC Couverture

Producto

Componentes

- 1 purificador de aire
- 2 Difusor PureJet
- 3 Placa Trasera
- 4 Cabezal de pie
- 5 Soporte Base
- 6 Filtro principal
- 7 Silenciador
- 8 Alimentación de AC Adaptador y enchufes
- 9 Conector de DC Cubrir

產品組件

- 1 空氣淨化器
- 2 PureJet擴散器
- 3 背板
- 4 站頭
- 5 站立基地
- 6 主濾波器
- 7 消聲器
- 8 交流電源適配器和插頭
- 9 直流連接器蓋

产品组件

- 1 空氣淨化器
- 2 PureJet擴散器
- 3 背板
- 4 站頭
- 5 站立基地
- 6 主濾波器
- 7 消聲器
- 8 交流電源適配器和插頭
- 9 直流連接器蓋

製品コンポーネント

- 1 空氣清淨機
- 2 PureJetディフューザー
- 3 バックプレート
- 4 スタンドヘッド
- 5 スタンドベース
- 6 プライマリフィルタ
- 7 サイレンサー
- 8 AC電源 アダプター & プラグ
- 9 DCコネクタカバー

생성물구성 요소

- 1 공기 청정기
- 2 PureJet 기관총
- 3 뒷판
- 4 스탠드 헤드
- 5 받침대
- 6 기본 필터
- 7 소음기
- 8 AC 전원어댑터 및 플러그
- 9 DC 커넥터 덮개

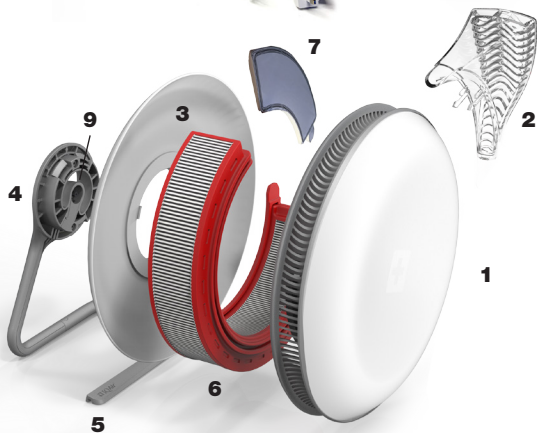
Продукт

Компоненты

- 1 очиститель воздуха
- 2 Распылитель PureJet
- 3 Задняя панель
- 4 -х голова
- 5 Подставка основания
- 6 Первичный фильтр
- 7 Глушитель шума
- 8 Мощность переменного тока
- 9 Адаптеры и пробки
- Разъем постоянного тока
- Обложка

جتنم

- 1 تانوكملا
- 2 ءاوهال قيقننتل
- 3 رشانال تيقجيبوب
- 4 رهظلا قجول
- 5 سيقير فوقولا
- 6 قيقووال قءءاق
- 7 قيقلوال قيقفصت
- 8 توصول مءاك
- 9 قطلسل سا
- سباقملا لوخم
- سد لصوم
- يقطغي ءاطغ



Congratulations on your purchase of the IQAir Atem® personal air purifier. Please study this User Guide carefully to familiarize yourself with the special features and functions of this IQAir product. Retain this document in a safe place for future reference.

Herzlichen Glückwunsch zum Kauf dieses IQAir Atem® Hochleistungs-Luftreinigungssystems. Bitte lesen Sie diese Bedienungsanleitung sorgfältig durch, um sich mit den Besonderheiten und Funktionen Ihres IQAir® Systems vertraut zu machen, und bewahren Sie es an einem sicheren Ort auf.

恭喜您購買了此IQAir Atem®高性能空氣淨化系統。請仔細閱讀本用戶手冊，以熟悉IQAir®系統的特殊功能和功能，並將其保存在安全的地方以備將來參考。

恭喜您购买了此IQAir Atem®高性能空气净化系统。请仔细阅读本用户手册，以熟悉IQAir®系统的特殊功能和功能，并将其保存在安全的地方以备将来参考。

IQAir Atem® 개인용 공기 청정기를 구입하신 것을 축하드립니다. 이 사용자 가이드를 주의 깊게 살펴보고 이 IQAir 시스템의 특수 기능을 숙지하십시오. 나중에 참조 할 수 있도록이 문서를 안전한 장소에 보관하십시오.

English.....1-10

EN

Deutsch.....20-40

DE

Français.....40-50

FR

Espanol.....60-70

ES

简体中文.....10-20

CN
SP

中國傳統的.....10-20

CN
TR

日本.....70-80

JP

한국어.....80-90

KO

русский.....90-100

RU

العربية.....100-110

AR

For the user guide in other languages visit
www.iqair.com/userguide

Important Safety Warnings

Before you start

The IQAir Atem® personal air purifier is ideal for use at your desk, bedside or anywhere you wish to create your own personal clean air zone.

The Atem should only be used in conjunction with the dedicated stand, power accessories, and/or hardware delivered in the package. Misuse can lead to injury, malfunction and/or damage.

Read these instructions for use carefully before using the product and save them for future reference.



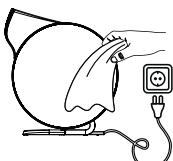
- As with all electronic devices, please keep out of the reach of children under the age of 3. This device is not a toy! Do not let children play with it.

To reduce risk of fire, electric shock, or injury please read these warnings before using this product.

- To avoid risk of fatal electric shock and fire only plug the product into suitable, easily accessible, mains power connections. Use only the IQAir provided power accessories.



- Use the power accessories only indoors and in dry environments.



- Do not use damaged power accessories, cables or plugs.
- Do not allow any kind of liquid to spill on, or come into contact with the product. Including, but not limited to; water, detergents or flammable solvents.

- Important to clean the device:

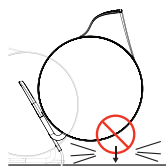
- Disconnect from the power supply
 - Use a soft, dry cloth only
 - Cables and plugs: Keep plugs clean and dry.
- Blow away any dirt lodged in the plugs of the connecting cables.

Never immerse the product or any of its components in water or under running water.



- Never cover the unit nor otherwise impede the air intake and outflow in any way. Do not introduce a foreign object or finger into air flow openings.

Important Safety Warnings



- This product contains high-precision technology. **Do not drop**, tamper with nor expose to impact.

Intended use for this product is for in a living, office or automotive environment. It creates a dedicated breathing zone within a defined area.

- Permitted use for this product should only be on the original stand or fixture designed to hold the purifier delivered in the package.
- Adverse use for this product would be in damp or wet environments such as bathrooms or kitchens. Do not introduce body parts or objects into the air intake or outlet of the purifier.
- Adverse use can lead to injury, malfunction and damage.
- Limits of use: Only environments suitable for use in an atmosphere appropriate for permanent human habitation. Not suitable for use in aggressive or explosive environments.

Electromagnetic Compatibility (EMC)

- The term *Electromagnetic Compatibility* is taken to mean the capability of the product to function smoothly in an environment where electromagnetic radiation and electrostatic discharges are present, and without causing electromagnetic disturbances to other equipment.
- Electromagnetic radiation can cause disturbances in other equipment. Although the product meets the strict regulations and standards which are in force in this respect, IQAir cannot completely exclude the possibility that other equipment may be disturbed.

Environment

Help to preserve the environment. Do not discard the device with household waste. Bring it to the official waste recycling service near you. Filters may be disposed of with household waste.

Product Storage

When not in use store your Atem in a clean dry place. Use the original packaging for optimal storage.

For USA: FCC Statement

This equipment has been tested and found to comply with the limits for a **Class B digital device**, pursuant to part 15 of the FCC rules. These limits are designed to provide reasonable protection against harmful interference in a residential installation.

This equipment generates, uses and radiate frequency energy and, if not installed and used in accordance with the instructions, may cause harmful interference to radio communication.

However, there is no guarantee that interference will not occur in a particular installation. If this equipment does cause harmful interference to radio or television reception, which can be determined by turning the equipment off and on, the user is encouraged to try to correct the interference by one or more of the following measures:

- Reorient or relocate the receiving antenna.
- Increase the separation between the equipment and the receiver.
- Connect the equipment to an outlet on a circuit different from that to which the receiver is connected.
- Consult the dealer or an experienced radio/TV technician for help.



The location of the compliance statements on Atem Purifier is found under the Back Plate cover.

Changes or modifications not expressly approved by the party responsible for compliance could void the user's authority to operate the equipment.

For Canada:

This device complies with Industry Canada's

- licence-exempt RSSs. Operation is subject to the following two conditions:
- (1) This device may not cause interference; and
 - (2) This device must accept any interference, including interference that may cause undesired operation of the device.

Product Components and Assembly

Product components

See product drawing inside the cover.

- 1 Atem® air purifier
- 2 PureJet™ diffuser
- 3 Back plate
- 4 Stand head
- 5 Stand base
- 6 HyperHEPA® filter
- 7 Silencer
- 8 Power adapter and plugs
- 9 Connector cover

Assembly

After unboxing you will find the Atem personal air purifier (1) with the PureJet diffuser (2) attached.

Power and stand assembly

Remove and unpack the power adapter & plug box. Select the correct plug for your region and snap into place as shown.



Select your regions plug.



Snap into place.



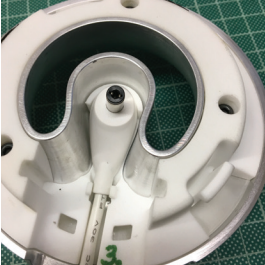
Assembled plug.



Remove the connector cover.

Take the stand head (4) and remove the connector cover (black part) (9) and set aside.

Take the connector end of the power adapter cord (8) and snap the head into place. Replace the connector cover



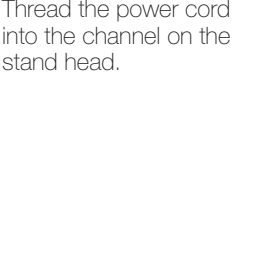
Snap in the power cord head.



Replace the connector cover.



Thread the cord into the stand.



Thread the cord into the stand.



Connect the stand head to the base.



Assemble the stand head to the stand base (5) together.

Once assembled your stand is now ready to attach to the back of the purifier.

Connecting the air purifier to the stand

Set the stand upright. Firmly grasp the air purifier and align the back plate (3). Tilt and hook the edge onto the stand head which aligns the power plug head. Snap the air purifier and stand together.

With your Purifier, Pure Jet Diffuser and Stand assembled you are now ready to use your Atem personal air purifier.



Align the stand head.



Angle and snap into place.



Assembled and powered on Atem personal air purifier.

Setting up your personal clean air zone

Place the Atem personal air purifier near you on a stable surface such as a desk or table. Point the PureJet diffuser toward your face, directing the flow of purified air directly

into your breathing zone.

For optimal clean air delivery place the Atem as close to you as possible.



Set-up and placement of your Atem.

Using the Atem for the first time



Small red illumination and chime = on or off.



Touch point.

Upon initially connecting to the power supply, you will hear the Atem's power on *chime* and see a single red LED illumination.

User interface & touch point settings

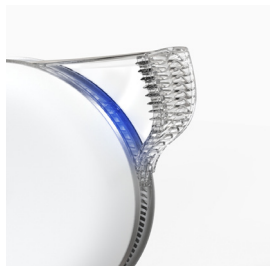
To change fan speed, use two fingers to touch the center of the face plate. With every touch, you will hear a *sound* and see the blue LED illuminate. The size of the LED corresponds to the air speed.



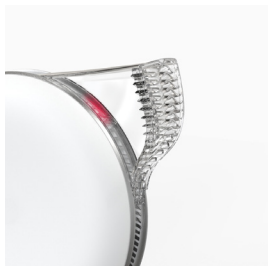
Small blue illumination and *sound* = low speed.



Medium blue illumination and *sound* = medium speed.



Full blue illumination and *sound* = high speed (Cooling Mode).



A double red LED flash with *sound* = change filter.

Filter Replacement

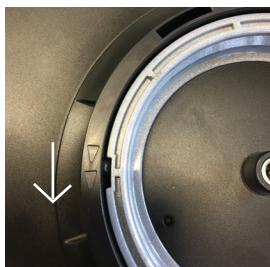
The Atem will indicate a necessary filter change with a double red LED flash with sound.

HyperHEPA filter

Follow steps 1-4 to change the filter in the Atem.

Disconnect the Atem from the power source changing filter!

Step 1: Remove the air purifier from the stand and place it face down onto a cloth surface with the back facing up.



Opening direction.

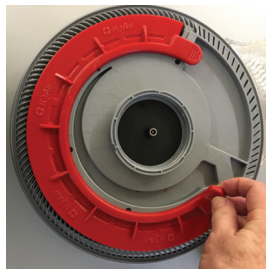


To unlock turn the locking ring.



Easily lift the back cover away.

Step 2: Note the back-plate locking ring direction indicators. Grasp the locking ring firmly and rotate in a counter clockwise direction until the back-body plate (3) releases. You should be able to easily lift the back away.



Lift tabs to remove filter.

Step 3: Remove the old filter by pulling on the tabs and dispose of it. Replace with a new IQAir Atem HyperHepa® filter (6) and firmly press into place.



Locking direction.

Step 4: Replace the back plate and gently rotate until the lock pins fall into place. Grasp firmly and press down on the locking ring and turn clockwise to lock. The back should now be closed securely. Place the Air Purifier on the Stand for use.

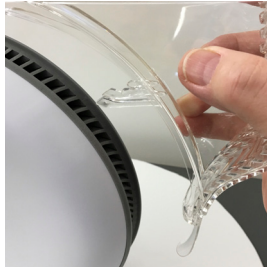
PureJet Diffuser

To remove your PureJet diffuser firmly grasp the air purifier and diffuser and pull the two apart.



Removal of the diffuser.

To replace your PureJet diffuser firmly grasp the air purifier and diffuser and align the large pins at the



Align the large pins.

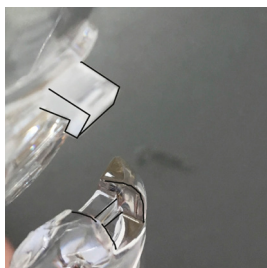
back of the diffuser, with the arrows on the outlet vent. Note the outlet vent has larger openings.



Outlet vent arrows.

Once the diffuser pins are aligned with the arrows press firmly into place while holding the air purifier steady with your hand.

Should the PureJet diffuser face plate become dislodged, align the hook at the bottom of the diffuser face plate with the bottom of the diffuser body and snap firmly into place.



Connector hook.



Diffuser plate snaps into place

Cleaning the PureJet diffuser

Completely remove the diffuser to facilitate safe cleaning.

IQAir Atem App

To enhance your user experience and to unlock additional features of the IQAir Atem personal air purifier, download and install the IQAir Atem App for Apple or Android. App features and benefits include:

- Proximity switch
- Fan speed settings
- Filter life notifications
- Safety settings



With the App, you will be able to access all the features and custom setting available for your Atem. Please remember that the Bluetooth® mode must be activated beforehand on your smart phone. To install follow the set-up directions on the App.

Bluetooth pairing

Pair your Smart Phone device with the Atem by using the IQAir Atem App.

The Atem is automatically in discovery mode and will appear in the Bluetooth section of the App.

Tap the Atem name to pair. Enter the Bluetooth code PIN found on the back of this manual, backplate or on the UPC label.

Proximity switch

The Proximity Switch feature in the App can be set to sense proximity of the user's Smart Phone device to the Atem. This enables a power-saving automatic on/off function if desired.

Troubleshooting

Visit the Atem support section on the website.

Accessories and Filters

A list of available filters and replacement parts for the Atem Purifier can also be found on the website at:

www.iqair.com



The location of product information & specifications is found on the type plate.

Technical specifications

Model:	ATEM 01 PLR-D 01 1234		
Power Rating:	12-24 V 1.5 A		
Power Adaptors:	Input: 100-240V ~ 50/60Hz		
	Output: 18V ~ 1.5A		
Power Consumption:	Max 2.8 W		
Dimensions (Air Purifier on stand):			
L x H x W	330 x 330 x 145 mm	13 x 13 x 5.8 in	
Weight (Air Purifier only):	1850g / 4.1lbs		

Responsibilities, Warranty and Service Information

Manufacturer of the product

IQAir AG, herein referred to as IQAir, is responsible for supplying the product, including the user manual and original accessories, in a completely safe condition. The manufacturers of non IQAir accessories for the product are responsible for developing, implementing and communicating safety concepts for their products, and are also responsible for the effectiveness of those safety concepts in combination with the IQAir product.

International Limited Warranty and Service

The IQAir Warranty applies, provided the product is handled properly for the intended use and if handled in accordance with its operating instructions.

Tampering with the power adapter or the use of a non IQAir provided power accessories voids the warranty. This product is subject to the terms and conditions set out in the International Limited Warranty which you can download from the IQAir home page at <http://www.iqair.com> The foregoing warranty is exclusive and is in lieu of all other warranties, terms or conditions, express or implied, either in fact or by operation of law, statutory or otherwise, including warranties, terms or conditions of merchantability, fitness for a particular purpose, satisfactory quality and non-infringement, all of which are expressly disclaimed.

For detailed instructions, how to claim your warranty for a defective device, please, visit the IQAir website, contact a IQAir distributor or your closest IQAir representative.

If you need information on IQAir products or if you have a problem with your product, please visit IQAir website at www.iqair.com or contact the retail shop where you purchased the product for further assistance.



Lesen Sie diese Gebrauchsanweisung sorgfältig durch, bevor Sie das Produkt verwenden und sie für zukünftige Referenz gespeichert werden.

Bevor Sie beginnen

Vielen Dank für die IQAir Atem persönliche Luftreiniger kaufen. Bevor Sie es installieren, Zeit nehmen, diese Anleitung zu lesen.

Die IQAir Atem persönliche Luftreiniger hilft Ihnen, Ihre Gesundheit zu schützen, indem die Qualität der Luft in der Atemzone, Ihrem Schreibtisch zu verbessern, wo Sie schlafen und wo immer Sie Ihre persönliche Atemzone erstellen möchten.

Die IQAir Atem persönliche Luftreiniger entfernt feine Partikel aus der Luft und erzeugt einen Strom von gereinigter Luft, die Sie erstellen Ihre persönlichen Atemzone hilft.

Contents

Important safety instructions	Page 12
Important product information	13
Un-Boxing & Assembling	6
Using your Atem	6
Atem Apps.....	7
Blue tooth pairing and app settings	8
Troubleshooting	9
Accessories	10
Warranty and Customer care info	10

Wichtige Sicherheitshinweise

在使用本產品之前，請仔細閱讀這些說明，並將其保存以備將來參考。

在你開始之前

感謝您購買IQAir Atem個人空氣淨化器。在安裝它之前，請花時間閱讀本指南。

IQAir Atem個人空氣淨化器將幫助您提高您的呼吸區的空氣質量，保護您的健康，您的睡眠，以及您想在哪裡創建您的個人呼吸區。

IQAir Atem個人空氣淨化器從空氣中去除細小顆粒，並產生一股淨化空氣，幫助您創建個人呼吸區。

內容

重要安全說明	Page XX
重要產品信息	XX
拆箱和裝配	XX
使用Atem	XX
Atem Apps.....	XX
藍牙配對和應用設置.....	XX
疑難解答	XX
配件.....	XX
保修和客戶服務信息.....	XX

重要安全信息