



Precautions and Safety

Please read the notices before using for your safety.

Electricity

Do not overload a single power circuit.

Overheating or fire can result.



Do not kink or crease the power cable or place heavy objects on the power cable.

Fire can result from damaged power cables.



Do not handle power plug and adapter with wet hands.

Electrical Shock may result.



Firmly plug the adapter into the wall socket.

Fire can result from improper use.



Unplug the AC adapter during electrical storms.

Electrical Shock may result.



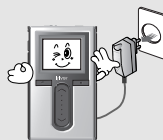
Use only the supplied AC adapter. Use of nonauthorized power adapters is not recommended.

Electrical Shock may result.



Unplug adapter when it's not in use.

Overheating or fire can result.



Immediately power off the player and unplug the AC adapter if water or other liquids are present.

Fire can result from improper use.



Immediately power off the player and unplug the AC adapter if smoke or odors emit from the player or adapter.

Fire can result from improper use.



Precautions and Safety

Please read the notices before using for your safety.

Product

Do not place heavy objects on the device.

Damage to your player may result from improper use.



Keep away from harsh environments including humid, dusty, and smoky areas.

Damage to your player may result from improper use.



Avoid contact with water and other liquids.

Damage to your player may result.



Do not use water or chemicals to clean the player. Clean the surface with a soft cloth.

Damage to your player may result from improper use.



Do not clean with chemical or detergent.

Damage to your player may result from improper use.



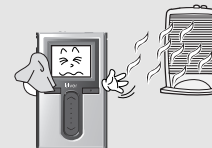
Do not use excessive force on the buttons or attempt to disassemble the device.

Damage to your player may result from improper use.



Keep out of direct sunlight and extreme heat and cold.

Damage to your player may result from improper use.



Do not drop or subject the device to impact.

Damage to your player may result from improper use.





Precautions and Safety

Please read the notices before using for your safety.

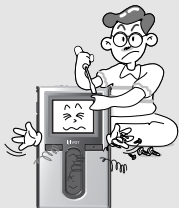
Keep the player away from strong magnets.

Damage to your player may result from magnets such as CRT, TV, monitor and speaker.



Do not disassemble or modify.

Damage to your player may result from improper use.



Do not dry the product with heater or microwave.

Damage or severe injury may result from improper use.



Bad sectors can be created in HDD because of physical impact.

Data in HDD can be damaged. Always keep a proper backup of data stored on portable devices.



When you upload or download files using USB cable, do not disconnected the USB cable suddenly or turn it off.

Data in HDD can be damaged.



Data can be damaged because of physical impact, lightning and power failure.

Users are responsible for creating backup data and iriver Limited is not responsible for any damaged data.



Precautions and Safety

Please read the notices before using for your safety.

Others

Do not use headphones / earphones while cycling, driving, or operating any motorized vehicle.

It is dangerous and is illegal in some areas.



Reduce volume while walking, especially at pedestrian crosswalk.



Do not use headphone / earphones at high volume.

Hearing experts advise against listening to continuous, loud and extended play.



Reduce volume or stop using the player if you experience a ringing in your ears.

Hearing experts advise against listening to continuous, loud and extended play.



Do not use at high volume for continuous listening.

Hearing experts advise against listening to continuous, loud and extended play.



Keep headphone/earphone cords under control to avoid getting caught on various objects.





Features of the H10

1 Vivid color display – 1.8-inch TFT LCD with 260,000 colors
The 1.8-inch, 260,000 color TFT LCD shows off an exciting new visual interface that makes it easy to navigate through your music.

2 Small Device – Large Capacity
The H10 features a 2MB hard drive that can hold more than 1,500 music files. (1GB = 1,000,000,000 Bytes - Not all memory available for storage.)

3 Convenient ID3 tag database
Searching with the ID3 tag database enables you to select the music file by artist, album or genre.

4 Intuitive software (iriver plus)
The intuitive software makes it easy to manage all of your music.

5 Faster file transferring – Supporting USB 2.0 interface
USB 2.0 supports transfer rates up to 480Mbps.

6 Firmware upgradeable
Firmware upgrades keep your player up to date.



Features of the H10

7 Photo and text viewer
View digital photos or text files on the player's color screen.

8 Enhanced 3D sound
SRS WOW sound effect technology provides rich bass sound and dynamic 3D sound effect.

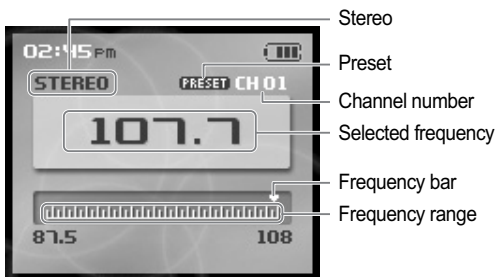
9 Customizable EQ settings
Over 30 preset EQs to choose from and a custom user EQ.

10 FM radio and recording
Listen to FM radio using the automatic scanning and channel memory functions. You can also record the FM broadcast while you listen.

11 Easy to use touch strip
Navigating through your music is easy using convenient touch strip scrolling.

LCD screen display

FM RADIO screen



Stereo
Preset
Channel number
Selected frequency
Frequency bar
Frequency range

RECORDING screen



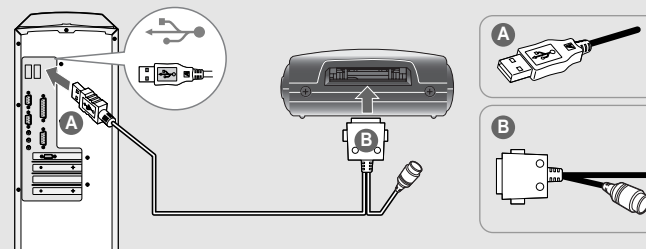
Recording status
Free space
Remaining recording time
Record elapsed time

Connecting the product

This manual covers the use of the H10 player hardware. For instructions on related software and instructions for getting music on your player, please see the included iriver plus user manual.

Connecting PC – Connecting cable

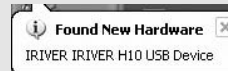
1 Connect the included USB cable to the port on the H10 then to an open USB port on your computer.



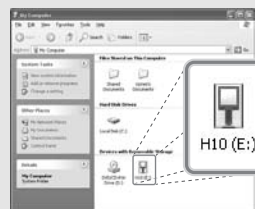
2 Power on the player by pressing the [] button. The LCD screen will display <USB Connected>.



3 Windows may show "Found New Hardware" when the player is first attached.



4 The H10 will display as a new device under My Computer.



5 The H10 is now installed and working properly. Please see the included iriver plus user guide for steps to load music onto the player.

Connecting the product

Connecting PC – Disconnecting cable

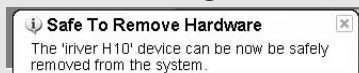
- 1 Click the icon on the system tray.



- 2 Click the popup message as shown below.



- 3 When the "Safe To Remove Hardware" popup window appears, click the [OK] button and disconnect the USB cable from PC.



Note

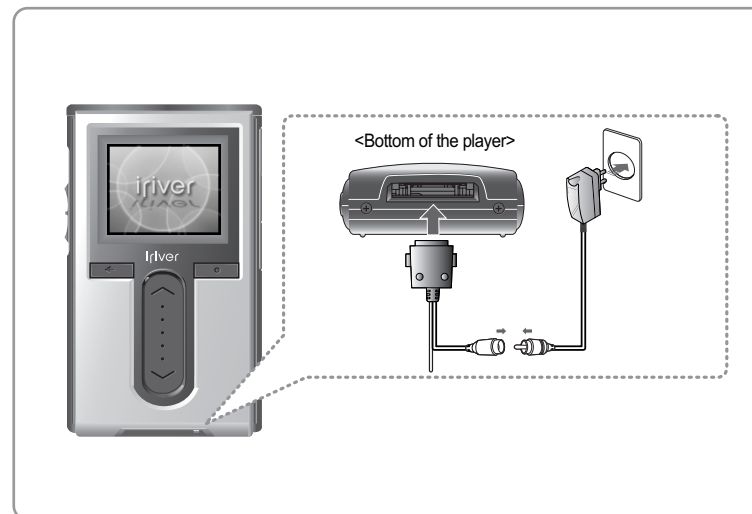
- The tray icon may be hidden in some Windows XP operating system settings. Click the "Display hidden icon" to view the hidden icon.
- Hardware safe removal may not be available while using some applications such as Windows Explorer or Windows Media Player. Please close all applications using the player before the hardware safe removal process.
- In some Windows XP operation system settings, hardware safe removal is temporarily unavailable due to some internal system communication. Wait for a moment and try it again.

Connecting the product

Be sure to use the supplied AC adapter to connect the cable to the player.

Connecting the power – connecting the adapter (player)

1. Connect the supplied cable to the player.
2. Connect the AC adapter to the DC jack on the cable.
3. Connect the AC adapter plug to a power socket.
AC adapter for this product is 100~240V, 50~60Hz.



Note

- If a power source is connected, the charging indicator on the DC jack will illuminate. (The charge indicator will dim after charging is complete.)



Installing the software

This manual covers the use of the H10 player hardware. For instructions on related software and instructions for getting music on your player, please see the included iriver plus user manual.

Installing iriver plus

1. The program installation process will start automatically after inserting the Installation CD to the PC's CD-ROM drive. If the program installation process does not start automatically, click the "My Computer" icon and run "iriver_setup_full.exe" file in the CD-ROM drive.
2. If the "Installer Language" window appears, select the desired language and click the [OK] button.



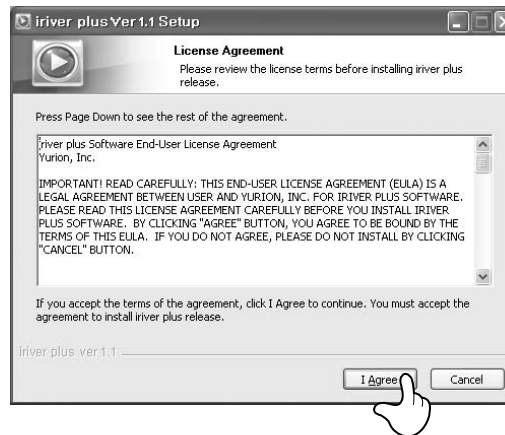
3. Follow the on screen instructions which appear as each window.



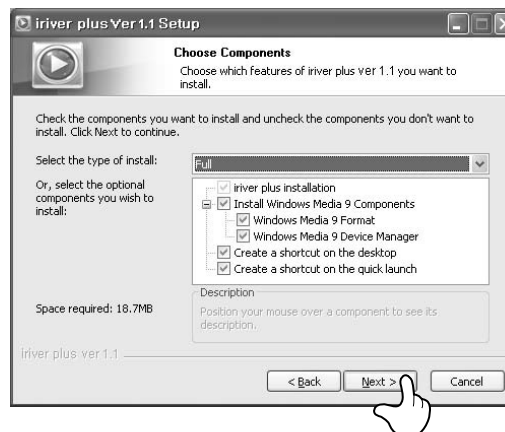
Installing the software

This manual covers the use of the H10 player hardware. For instructions on related software and instructions for getting music on your player, please see the included iriver plus user manual.

4. If the "License Agreement" window appears, click the [I Agree] button.



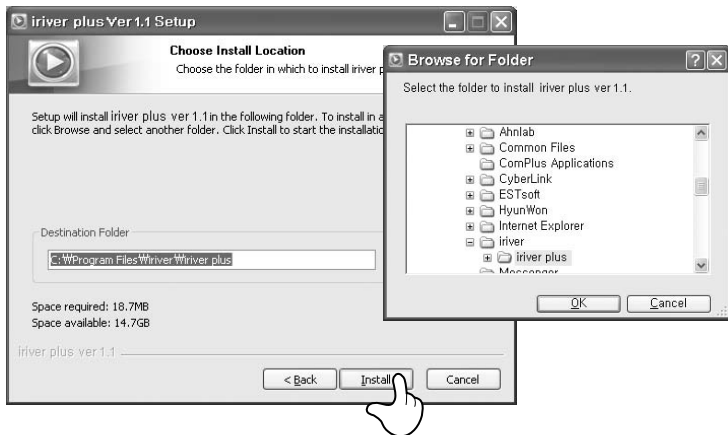
5. Select the components and click the [Next] button.



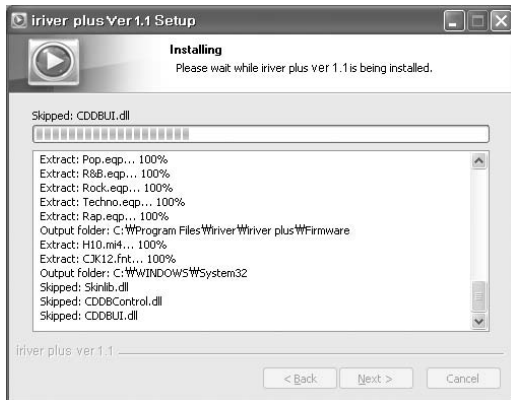
Installing the software

This manual covers the use of the H10 player hardware. For instructions on related software and instructions for getting music on your player, please see the included iriver plus user manual.

6. Select the installation folder and click the [Install] button.



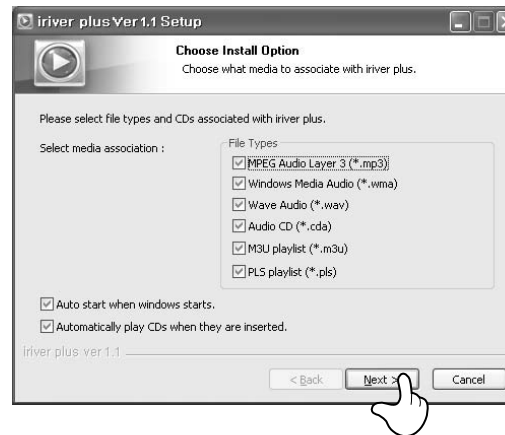
7. The installation process screen appears.



Installing the software

This manual covers the use of the H10 player hardware. For instructions on related software and instructions for getting music on your player, please see the included iriver plus user manual.

8. Select the file type and click the [Next] button.



9. Click the [Finish] button when the installation complete screen is displayed.





Turning on/off the player and playing music

This manual covers the use of the H10 player hardware. For instructions on related software and instructions for getting music on your player, please see the included iriver plus user manual.

Note

- Button image with white background = Press the button quickly.
Button image with black background = Press and hold the button.

Turning on/off the player



1 Turning on the player

Press the [] button.
The initial screen will be displayed.



Note

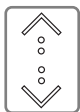
- If the player does not run after pressing the button, check whether the HOLD switch is set to OFF or the battery is discharged.



1 Turning off the player

Press and hold the [] button.
The player will be turned off.

Playing music



1 Select the <MUSIC> mode using the [] scroll and press the [] button when the main screen appears.



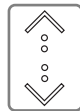
2 After finding the music and press the [] button to play it.

- : Plays the selected title



Controlling volume and changing modes

Controlling volume

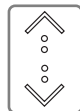


1 Use the [] scroll to control volume during playback.

- ↑ : Volume up
- ↓ : Volume down

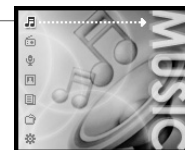


Changing mode

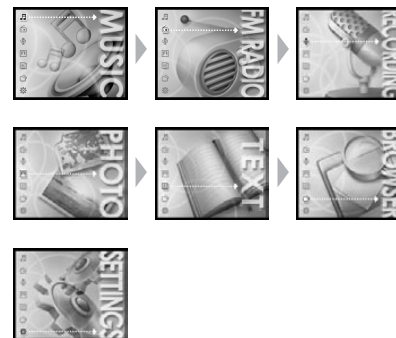


1 Select the mode using the [] scroll when the main menu appears.

There are 7 modes including MUSIC, FM RADIO, RECORDING, PHOTO, TEXT, BROWSER, SETTINGS.



Note



2 Press the [] button to enter the desired mode.



3 If you press and hold the [] button in any screen, you can return to the main menu.



Listening to FM radio

Storing FM radio station - Manually



1 If <PRESET> is displayed, press the [▶] button to disable "Preset" mode, and press the [◀/▶] button to increase/decrease the frequency.

◀ : Decreases frequency
▶ : Increases frequency

2 Press and hold the [▶] button. If all 20 available channels are filled, the station will not be stored.

Note

- Up to 20 channels can be stored.
- Once all 20 channels are filled, new stations can not be stored. Please refer to page 46 to delete a station before storing another.


Listening to FM radio

Scanning FM radio frequency – PRESET feature

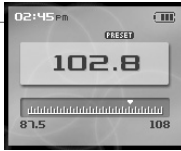


1 If <PRESET> is not displayed, press the [▶] button to enable "Preset" mode.

2 Press the [◀/▶] button to move to previous/next Preset station.

◀ : Moves to previous Preset station
▶ : Moves to next Preset station

Note

- Only stored Preset stations can be selected.

Storing FM radio stations - Automatically

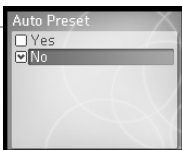
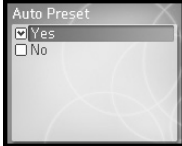
<Auto Preset> will program up to 20 stations automatically in the 20 channels. The <Auto Preset> function can be set in <SETTINGS> - <Extra> - <Auto Preset>.

1 If the <Auto Preset> screen appears, move to [Yes] using the [↑/↓] scroll.

2 Press the [○] button. The tuned stations will be stored one by one.

Note

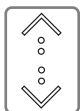
- In areas where the signal is weak, some channels may not be stored.



Recording

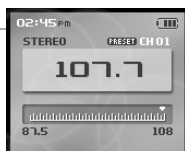
Recording FM radio station



- 1 Select the <FM RADIO> mode using the [\uparrow / \downarrow] scroll from the main menu.



- 2 Press the [O] button to switch to Radio mode.



- 3 Press and hold the [●] button to record radio broadcasting while listening.



- 4 Press the [O] button to stop recording.

Note

- Volume control is not available while recording.



Recording

Notices for recording

Note

- Recording is automatically stopped if :
 - The player's memory is full.
 - The battery is low.

Playing the recorded file



- 1 Press the [▶||] button in recording standby mode to play the recorded file.



Note

- The recorded file is saved in following locations depending on the SOURCE.

Voice

My Recordings\Voice\VoiceYYMMDDXXX.MP3

Line In

My Recordings\Audio\AudioYYMMDDXXX.MP3

Tuner

My Recordings\Tuner\TunerYYMMDDXXX.MP3

(YYMMDD - Y : Year, M : Month, D : Day)

- Use the <BROWSER> menu to select and play files.



Firmware upgrade

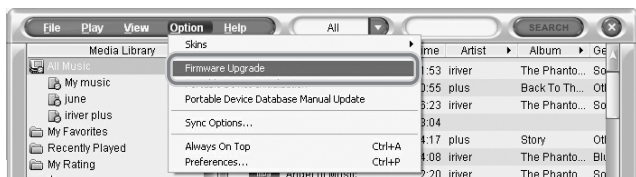
What is firmware ?

It is the operating system that works in the H10.
iriver provides you with the latest and best features through Firmware upgrade.

You can choose manual or automatic upgrade function.
For information on automatic upgrade, refer to the iriver plus instruction manual.

Manual firmware upgrade

- 1 Select [Option - Firmware Upgrade] from the menu in iriver plus.



Note

- Do not disconnect H10 during firmware upgrade.
- Internet must be connected for the "Firmware Update" function.
- Change to "Player must be connected to the PC for Firmware Upgrade function."



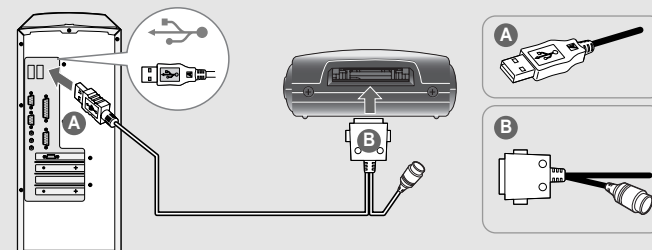
Initializing H10

Initializing H10

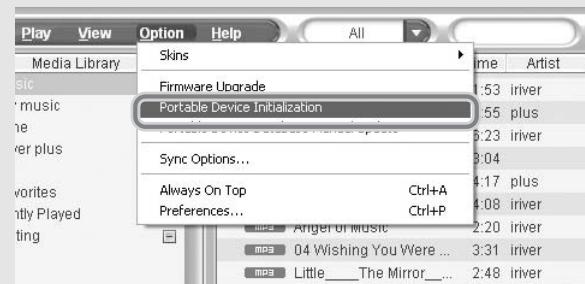
Please initialize H10 player in the following cases.
All music, pictures, text, and data will be erased from the player during this initialization.

- if there appears to be corruption on the internal hard drive.
- if an error message displays and the player doesn't boot properly.

- 1 Connect the player and PC using the cable supplied with the player.



- 2 Open iriver plus.
Select [Option-Portable Device Initialization].



- 3 Click [Start] to begin initializing.



Troubleshooting

Symptom	Possible solutions
The player will not power on.	<ul style="list-style-type: none"> ■ Check whether the HOLD switch on the player is ON. (Switch it to OFF position.) ■ Check whether the battery is discharged. ■ Check it again after connecting the AC adapter. ■ Check whether the battery is connected correctly. ■ If the power is still turned on after charging, please contact iriver customer support.
No sound during playback.	<ul style="list-style-type: none"> ■ Check whether volume is set to "0". ■ Connect the earphones plug firmly.
Buttons do not work.	<ul style="list-style-type: none"> ■ Check whether the HOLD switch on the player or remote control is ON. Switch it to OFF position and try it again.
Noise and distortion during playback.	<ul style="list-style-type: none"> ■ Check whether the plug or connection jack of earphone is dirty. Dirty connectors may cause noise. ■ Check whether the music file is corrupted. Check it again with other music file. If the file data is corrupted, noise or distortion may result.
Characters in LCD are corrupted.	<ul style="list-style-type: none"> ■ Check whether the right language is selected. The language setting can be changed in <SETTINGS> - <Extra> - <Language>.



Troubleshooting

Symptom	Possible solutions
Poor radio reception.	<ul style="list-style-type: none"> ■ Check whether an earphone is connected. Earphone cord functions as an antenna during radio reception. Radio reception will be poor unless an earphone is attached to the player. ■ Adjust the position of the player and earphone. ■ Turn off any nearby electronic equipment to avoid possible interference. If it is effective, move and use the player away from those sources.
Failed download.	<ul style="list-style-type: none"> ■ Check whether the USB cable is firmly connected. ■ Check whether the AC adapter is connected. If the remaining battery amount is not sufficient, download may not be available.
The titles saved in H10 are not played.	<ul style="list-style-type: none"> ■ Audio titles listed under <MUSIC> will only play if they were loaded using iriver plus or Windows Media Player. Use the BROWSER function to locate and play your files. ■ If the files still do not play, it is possible they are in a format not compatible with this player. Please consult with the program or service used to originally retrieve the titles.



Specifications

Category	Item	Specifications
HDD	Capacity	1GB, 2GB, 512MB
	File system	FAT 32
PC	Supported OS	Windows 2000 / XP
	Interface	USB 2.0
Audio	Frequency range	20Hz~20KHz
	Headphone output	18mW (L) + 18mW (R) at 16Ω Max. Volume
	S/N ratio	90dB(MP3)
	Frequency range	± 3dB
	No. of channels	Stereo (L/R)
FM radio	FM frequency range	87.5MHz ~ 108MHz
	S/N ratio	60dB
	Antenna	Headphone / Earphone cord antenna
File support	File type	MP3(MPEG 1/2/2.5 Layer3), WMA, TXT, JPG**
	Bit Rate	MP3 : 32Kbps~320Kbps WMA : 32Kbps~192Kbps
	Tag	ID3 V1, ID3 V2 2.0, ID3 V2 3.0, ID3 V2 4.0
Power supply	AC Adaptor	DC 5.0V, 2.0A
	Battery	Internal Rechargeable Li-polymer Battery
General	Dimensions	102.3 X 61 X 21.7 (mm)
	Weight	Approx. 165g
	LCD	1.8" 260,000 TFT LCD
	Operational temperature	-5 °C ~ 40 °C
	Max. playtime	Approx. 12 hours (When used with 128 Kbps, MP3, 20 Volume level, EQ Normal, LCD off)

* 1GB = 1,000,000,000 Bytes
Not all memory available for storage.

** The Progressive JPG is not supported.



FCC

Federal Communications Commission (FCC)

The device manufactured and found to comply with limits for a Class B computing device according to the specifications in FCC rules Part 15. Operation is subject to the following two conditions;

1. This device may not cause harmful interference.
2. This device must accept any interference received, including interference that may cause undesired operation.
3. If your device needs repairs, you must arrange for the manufacturer to make them if you are to keep the device's FCC registration valid.

This equipment, like other electronic equipment, generates and uses radio frequency energy. If not installed and used according to the instructions in this manual, this equipment may cause interference with your radio and television reception.

If you think this equipment is causing interference with your radio or television reception, try turning the equipment off and on. If the interference problems stop when the equipment is switched off, then the equipment is probably causing the interference. You may be able to correct the problem by doing one or more of the following:

- Adjust the position of the radio or TV antenna
- Move away the device from the radio or TV

If necessary, consult your dealer or an experienced radio or television technician. You may find this booklet helpful: "How to Identify and Resolve Radio and TV Interference Problems" (Stock No. 004-000-00345-4), prepared by the FCC and available from the U.S Government Printing Office, Washington, DC 20402. See individual devices FCC ID and registration numbers.

For the customers in Europe



The CE mark on the CD player is valid only for products marketed in the European Union.

USER INFORMATION

This equipment has been tested and found to comply with the limits for a Class B digital device, pursuant to Part 15 of the FCC Rules. These limits are designed to provide reasonable protection against harmful interference in a residential installation.

This equipment generates, uses and can radiate radio frequency energy and, if not installed and used in accordance with the instructions, may cause harmful interference to radio communications. However, there is no guarantee that interference will not occur in a particular installation. If this equipment does cause harmful interference to radio or television reception, which can be determined by turning the equipment off and on, the user is encouraged to try to correct the interference by one or more of the following measures:

- Reorient or relocate the receiving antenna.
- Increase the separation between the equipment and receiver.
- Connect the equipment into an outlet on a circuit different from that to which the receiver is connected.
- Consult the dealer or an experienced radio/TV technician for help.