





**7** Press the  button to finish the recording. The recording standby screen is displayed.



**[Note]**



- Press the  button again in standby mode to record into a new file.
- Press the  button while recording to pause the recording. Resuming the recording will not create a new file.
- The recording will automatically stop in the following conditions:
  - Not enough space is available for the recording.
  - Recorded MP3 file is over 200MB in size.
  - Over 5 hours have been recorded - Insufficient battery

**Playing the recorded file**

Press the  button in recording standby mode to play the recorded file



**[Note]**

- The recorded file is saved in the following location, depending on the Source.  
 LINE IN : ROOT\RECORD\AUDIO\AUDIOXXX.MP3  
 TUNER: ROOT\RECORD\AUDIO\TUNERXXX.MP3  
 INT/EXT MIC : ROOT\RECORD\VOICE\VOICEXXX.MP3
- Press the  button to pause the playback. To resume playback, press the  button again.

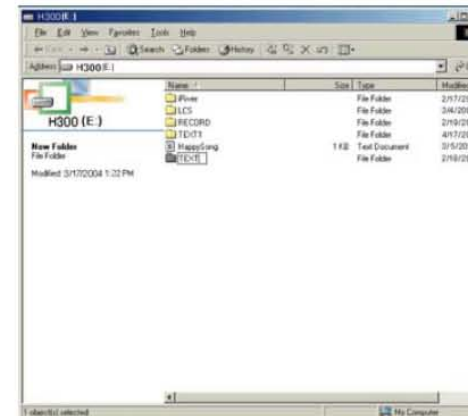


## Using the text function

**Saving a text file**

Save a text file to read lyrics and other related information. Use the text file function to display lyrics and other related information while playing a music title. The text function can be employed for other useful applications including the ebook.

- 1** Connect the product to a PC using the USB cable. An icon is displayed in the PC tray if connection is successful. Please see [Page 24, 2. Getting started - 2. Connecting the product - Connecting to a PC] for details.
- 2** Click Windows Start -> Programs -> Accessories -> Windows Explorer.
- 3** Use Windows Explorer to create a folder named TEXT in the top folder of the H300 drive.



- 4** Store .txt files to the TEXT folder.



**[Note]**

- Use Windows Explorer to delete a text file
- Only Wan-Sung type Korean text files are supported. To use a Jo-Hap type Korean text file, please convert it to a Wan-Sung type before using it.
- A maximum of 200 text files are supported. A maximum size of 240KB is allowed for each file.

**Viewing text**

1 Press and hold the button in playback standby mode or in the radio screen to open the function menu.



2 Use the buttons to select the Text icon then press the button to open the Text screen. Check the tree structured file listing.



3 Use the buttons to select the desired folder or file and press the button to select. See the text file displayed in the LCD.



**[Note]**

- Press the button to end the text function.
- The maximum number of characters that can be displayed in the screen is: Korean: 13 characters per line, 10 lines. English: 26 characters per line, 10 lines.
- Text is not displayed in the LCD remote controller (sold separately).
- The text reading feature is supported while playing an MP3 file.
- Press the REC button while reading text to switch to the MP3 mode (Hot key.)

**Text Browsing**

**Normal Browsing**

- 1 Press the buttons to browse to the Previous/Next line while reading a text file.
- 2 Press the buttons to browse to the Previous/Next page while reading a text file.

**GO TO Browsing**

- 1 Press the button to go to a desired location while reading a text file
- 2 Use the buttons to select a desired location.



- 3 Press the buttons to select a desired number
- 4 Press the button to go to the new location.



**[Note]**

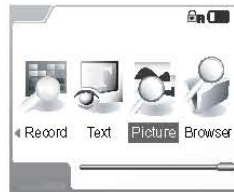
- The numbers are in KB unit.



## Viewing Image

### Viewing Image

- 1 Press and hold the button to open the functions menu.



- 2 Use the buttons to select the Picture icon then press the button to open the Picture screen.



- 3 You can see the files listed in a tree structure. Use the buttons to select the desired folder or file and press the button to select.

- 4 If a file is selected, the image is displayed in the screen. If a folder is selected, the files in the folder are displayed. Repeat step to open a desired image.



- 5 Use the buttons to view the previous or the next image



#### [Note]

- Press and hold the button to view the current image information.
- Press the button to view multiple images.
- If the image file size is too large, the image cannot be displayed in the Picture screen. The maximum file size is 5MB for a BMP file and 3MB for a JPG file.



## Using the Browser Function

Use the Browser function to exchange data with connected external devices. Not only equal H300 models but also different models such as iFP are supported. Also external devices such as digital camera are supported.



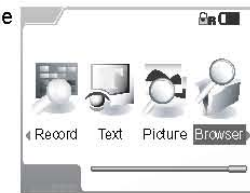
#### [Note]

- The Browser function does not support all USB devices. The product generally supports USB devices supporting mass storage class. Some mass storage class device may not be supported due to security functions or other restrictions.

- 1 Connect the product to an external device with the HOST cable.



- 2 Press and hold the button to open the Functions screen.



- 3 Use the buttons to select the Browser icon and press the button to open the Browser screen.

- 4 Files in the product are listed in the Browser screen. The external device is registered as DEVICE.

- 5 Use the buttons to select the DEVICE tap. Files in the external device are displayed.

6 Select a desired file and press the **A-B** button to open the popup menu window.



7 Use the **+** **-** buttons to select Copy and press the **NAME** button to copy the file.



8 Press and hold the **A-B** buttons to select the HOST tap.

9 Select the desired location and press the **NAME** button to open the popup menu window.



10 Press the **+** **-** button to select Paste and press the **NAME** button to paste the file.



**[Note]**

- Only one file or folder can be deleted or copied at a time. If a folder is deleted or copied, all files in the folder are deleted or copied together. However, if there is a sub folder, the sub folder is not deleted or copied.
- Use the same method to move data from the product to the external device.
- Select Del from the popup menu to delete the file.
- Select Info from the popup menu to display file name, size, and saved time.
- Maximum viewable folders in the File Management screen are 500 and Maximum viewable files in the File Management screen are 1,000



## Searching music

### Navigation using the File Tree

1 Press the **NAME** while in playback standby or playing to display the title list as the current title is selected.



2 Use the **+** **-** buttons to select a folder or title to play.

3 Press the **NAME** button again to open the selected folder or play the selected title.



**[Note]**

- If a folder is selected, repeat the step and to select a desired title to play.
- Press the **←** **→** button to move back to the parent folder or previous status.
- Files in each folder are sorted in alphabetical order, and serial numbers are then assigned according to the sorted order.
- Following messages are displayed depends on the type of played file.
 

<b>M</b> MP3 files	<b>O</b> OGG files
<b>L</b> IRM files	<b>W</b> WMA files
<b>A</b> ASP files	
- What is IRM (iRiver Rights Management)?  
The IRM is digital copyright information file designed by iRiver Limited. The IRM technology protects copyright and property from unauthorized usage of digital contents provided through iRiver Limited.
- Maximum viewable folders in the Navigation screen are 2,000 and Maximum viewable files in the Navigation screen are 9,999



- 2 Press the **A-B** button in the EQ Setting mode to change the tone color. The tone colors are changed in the following cycle.  
 Normal → Rock → Jazz → Classic → U.Bass → User EQ → SRS → TruBass → WOW(PRESET) → WOW (USER)



**[Note]**

- If left idle, the EQ Setting mode automatically reverts to the previous mode (A-B section repeat mode)
- Normal, Rock, Jazz, Classical, U.Bass, and User EQ are supported for the EQ.
- SRS, TruBass, WOW(PRESET), and WOW (USER) are supported for the SRS.
- Please see [Page 76, 5. Menu configuration - 8. Sound] for details of configuring the SRS.
- The WOW (PRESET) functions under the pre-defined configuration of SRS, TruBass, and Focus
- The WOW (USER) functions under the user defined configuration of SRS, TruBass, and Focus
- Values set in the Bass Boost and Treble Boost are applied to the USER EQ. The EQ is automatically set to USER EQ if either Bass Boost or Treble Boost is set.



## Setting Play Mode

### Repeat Play/Random Play/Intro Play

A variety of playback modes are supported. To use the playback modes, set the Repeat Play / Random Play / Intro Play configuration. Please see [Page 73, 5. Menu configuration - 7. Play Mode] for details.

- 1 To use Repeat Play / Random Play / Intro Play, press the **PLAY** button. **PLAY** Press it again for the next mode. An icon is displayed to indicate the current mode.



- 2 The modes are changed in the following cycle.  
 Not Set → 1 Song Only(Repeat) → Directory(Repeat) → Directory All(Repeat) → All Songs(Repeat) → Shuffle(Random) → 1 Song Only(Random) → Directory(Random) → Directory All(Random) → All Songs(Random) → INTRO(Intro)



**[Note]**

- If the play mode icon is not displayed when pressing the **PLAY** button, check if the Repeat Play / Random Play / Intro Play function is selected in the Menu screen.

### Section Repeat

Repeats a selected section in the playing file.

- 1 Press the **A-B** button to select the start point of a section to repeat. An **A** icon is displayed in the screen.

- 2 Press the **A-B** button again to select the end point of the section to repeat. The selected section is played repeatedly.



**[Note]**

- Press the **A-B** button again to end the section repeat.

## Play Reservation

- 1 Press the **NAV** button while in playback to display the Navigation screen.



- 2 Use the **+**, **-**, or **▶▶** buttons in the Navigation screen to select a music title to play.

- 3 Use the **A-B** button to reserve the selected title. The reserved title is displayed after completing the current music title.

## Study Mode

Skips a set period of time while playing.

- 1 Set the Study mode in the Mode menu. Please see [Page 75, 5. Menu configuration - 7. Play Mode - Study] for setting the Study mode.

- 2 Press the **▶▶** buttons while in playback to skip forward or backward by the set period of time.



### [Note]

• Set the skip time to 0 minutes and 0 seconds to end the Study mode.

## PLAYLIST

- 1 Press and hold the **A-B** button in the playback standby screen to display the PLAYLIST.



- 2 Use the **+**, **-**, and **▶▶** buttons to select a PLAYLIST in the PLAYLIST screen.

- 3 Press the **NAV** button or **▶▶** button to play the selected PLAYLIST.



### [Note]

- A maximum of 200 lists are supported.
- Creating the PLAYLIST
  - ① Use the Winamp software to create the PLAYLIST. Winamp is freeware software and available for download from <http://www.winamp.com/player/>.



- ② Double click the downloaded file to install.
- ③ After completing the installation, click Start -> Program -> Winamp -> Winamp to start the Winamp software.



[Note]



- ④ Click the PL button in the Winamp window to open the Playlist Editor window.
- ⑤ Click the Add button in the Playlist Editor window to select files or folders to add.
- ⑥ When the selected files are added and displayed, click the Manage Playlist then click the Save Playlist button in the following pop menu.



- ⑦ Input the file name in the Save Playlist dialog. Click the Save button to create an \*.m3u file.



## Managing music information files

### Updating music information files

Updates the music information file for the current MP3 file. Use the function to create or repair the database file (iRivNavi.iDB) if the information file is deleted or damaged.



[Note]

- What is a Music Information File?  
A music information file is a database file (iRivNavi.iDB), which is a collection of ID3 Tag information. The files are required for the ID3 Tag navigation function.

- 1 Connect the product to a PC using the USB cable. An icon is displayed in the PC tray if connection is successful. Please see [Page 24, 2. Getting started - 2. Connecting the product - Connecting to a PC] for details.
- 2 Click Windows Start -> Programs -> Accessories -> Windows Explorer.
- 3 Select H300 with Windows Explorer and click it with right mouse button.
- 4 Click the Update DB File option in the popup menu to update a Music Information File.  
**Update DB File**
- 5 Click the OK button after finishing the update.
- 6 'Safe Remove' the USB cable to disconnect the product from the PC. Please see [Page 27, 2. Getting started - 2. Connecting the product - Disconnecting from the PC] for details.



[Note]

- NO DB message in the screen means that there is no ID3 Tag information in the MP3 file.
- A failure message on the screen means that the file or folder name is using more than 52 characters.